

HIGHLIGHTS

Polio Eradication

The Strategic Advisory Group of Experts (SAGE) reviewed the readiness criteria for type 2 oral poliovirus vaccine (OPV2) withdrawal globally which include: (1) at least 1 dose of IPV in OPV-using countries; (2) bivalent oral polio vaccine (bOPV) licensed for routine immunization; (3) type 2 poliovirus surveillance and response protocols and monovalent OPV (mOPV) stockpile; (4) appropriate containment and handling of residual type 2 materials; and (5) verification of global eradication of wild poliovirus type 2.

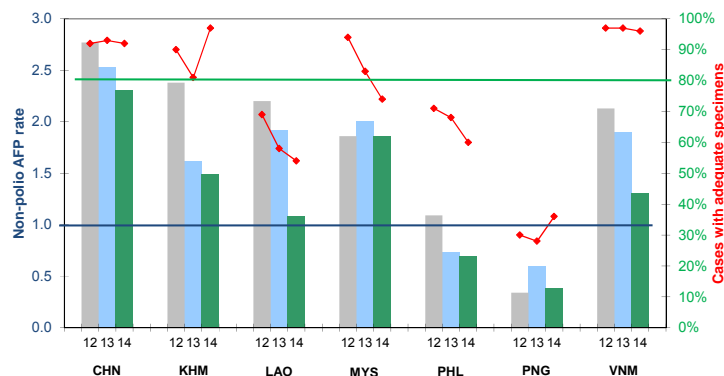
SAGE confirmed that preparations for OPV2 withdrawal in early 2016 are on track and recommended that WHO Member States be formally apprised of this through WHO's governing bodies to accelerate preparations and facilitate international coordination.

You can read more at <http://www.who.int/wer/2014/wer8950.pdf>.

CONTACT US

Expanded Programme on Immunization
Regional Office for the Western Pacific
World Health Organization
P.O. Box 2932, 1000 Manila, Philippines
Phone: +63 2 5288001
Fax: +63 2 5211036, 5260279
Email: WPR_EPIdata@wpro.who.int
Web: www.wpro.who.int/immunization

Chart 1. Non-polio AFP rate (per 100 000 persons < 15 years of age) and adequate specimen collection rate, 2012–2014*



* AFP rate annualized as of week 50

Chart 2. Percentage of cases with pending classification > 90 days after onset, 2014

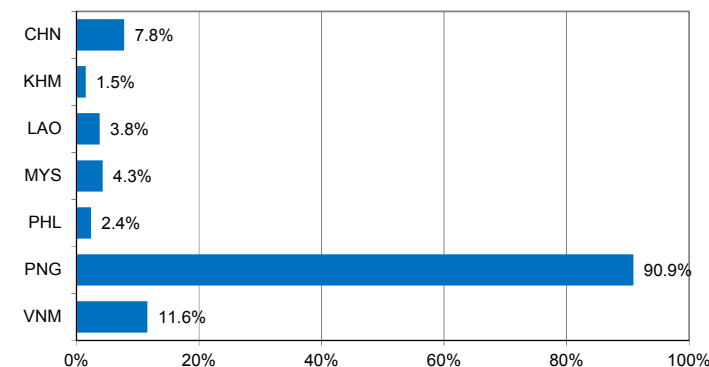


Chart 3. Polio immunization status of reported AFP cases, 2014

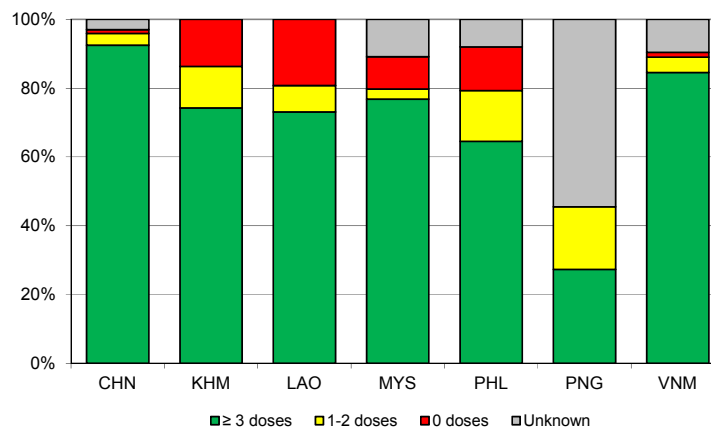
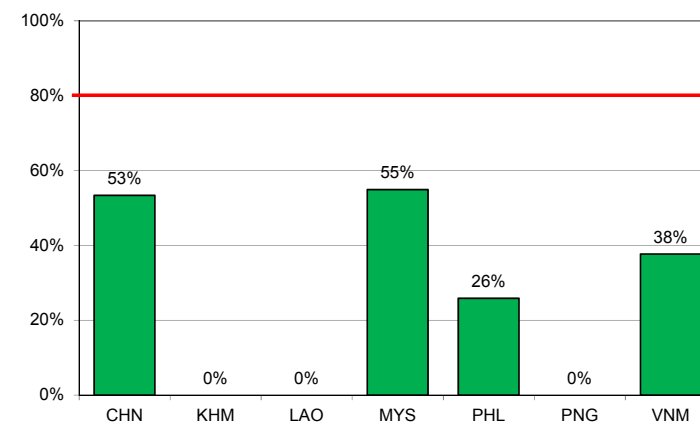


Chart 4. Percentage of samples received at the lab ≤ 3 days of collection, 2014



Note: Priority countries were selected for the charts. Official WHO acronyms have been used for abbreviation: CHN (China), KHM (Cambodia), LAO (Lao People's Democratic Republic), MYS (Malaysia), PHL (Philippines), PNG (Papua New Guinea), and VNM (Viet Nam).

Table 1. Classification of AFP cases with onset in 2014 and key surveillance indicators

	2013		2014													
	Total reported cases	Annual expected cases <15 years of age	Total reported cases	Classification						Indicators					Latest report date	Days since last report ⁷
				Confirmed wild poliovirus	Vaccine-derived poliovirus (VDPV)	Polio-compatible	Discarded (Non-polio)	Pending		Non-polio AFP rate ²	% with adequate specimens ³	% with any specimen ⁴	% investigated ≤ 2 days of notification ⁵	% with 60-day follow-up ⁶		
								Total	> 90 days ¹ # (%)							
Australia	62	44	50	0	0	0	47	3	1 (2.0%)	1.18	48%	80%	86%	0%	03-Dec-14	12
Brunei Darussalam	1	1	2	0	0	0	2	0	0 (0.0%)	2.08	50%	50%	100%	100%	30-Sep-14	76
Cambodia	73	46	66	0	0	0	56	10	1 (1.5%)	1.49	97%	100%	92%	100%	02-Dec-14	13
China	5623	2225	4940	0	0	0	3590	1350	383 (7.8%)	2.31	92%	99%	100%	85%	10-Dec-14	5
Hong Kong (China)	12	8	17	0	0	0	16	1	0 (0.0%)	2.21	88%	100%	100%	50%	02-Dec-14	13
Japan	0	167	0	-	-	-	-	-	-	-	-	-	-	-	-	-
Lao People's Democratic Republic	48	25	26	0	0	0	23	3	1 (3.8%)	1.08	54%	85%	92%	100%	04-Nov-14	41
Macao (China)	1	1	1	0	0	0	1	0	0 (0.0%)	1.04	0%	100%	100%	100%	14-Nov-14	31
Malaysia	155	77	138	0	0	0	129	9	6 (4.3%)	1.86	74%	97%	75%	83%	05-Dec-14	10
Mongolia	7	8	5	0	0	0	4	1	0 (0.0%)	0.65	80%	100%	100%	100%	08-Dec-14	7
New Zealand	12	9	5	0	0	0	4	1	1 (20.0%)	0.58	40%	80%	100%	67%	29-Oct-14	47
Papua New Guinea	18	30	11	0	0	0	0	11	10 (90.9%)	0.38	36%	91%	73%	0%	03-Dec-14	12
Philippines	277	378	251	0	0	0	211	40	6 (2.4%)	0.69	60%	92%	97%	6%	09-Dec-14	6
Republic of Korea	84	72	76	0	0	0	76	0	0 (0.0%)	1.10	83%	100%	97%	100%	17-Nov-14	28
Singapore	7	6	8	0	0	0	8	0	0 (0.0%)	1.39	75%	100%	88%	100%	02-Dec-14	13
Viet Nam	459	231	292	0	0	0	205	87	34 (11.6%)	1.31	96%	98%	93%	83%	24-Nov-14	21
Pacific island countries	8	10	11	0	0	0	7	4	2 (18.2%)	1.14	64%	100%	91%	75%	08-Dec-14	7
Total	6847	3338	5899	0	0	0	4379	1520	445 (7.5%)	1.84	90%	98%	98%	68%		

1. Number (%) of reported cases pending classification more than 90 days from date of onset of paralysis to date of last report
2. Annualized non-polio AFP rate per 100 000 population under 15 years of age
3. Percentage of reported cases with two stool specimens collected 24 hours apart and within 14 days of onset of paralysis
4. Percentage of reported cases with at least one specimen
5. Percentage of reported cases investigated within two days of notification
6. Percentage of reported cases with inadequate specimens for which the 60-day follow-up evaluation has been completed
7. Countries are expected to submit data at least once per month to WPRO

Green	Reached or surpassed target
Yellow	Nearly reached target: 0.5–0.99 for non-polio AFP rate; 60–79% for other indicators
Red	Substantially below target

Table 2. Laboratory investigation of AFP cases with onset in 2014 and key laboratory indicators

Country	National polio laboratory ¹	Total no. of AFP cases with specimens	Virus isolation results							% specimens positive for NPEV	Latest report date	Intratyptic differentiation / Sequencing lab ¹	No. of isolates referred	Intratyptic differentiation (ITD) results									NPEV ³	Pending ITD	Discordant pending sequencing	% ITD results reported ≤ 7 days of receipt ≥ 80%								
			L20B positive	L20B positive + NPEV	NPEV only	Negative	Pending ≤ 14 days	Pending > 14 days	% results reported ≤ 14 days ²					Type 1			Type 2			Type 3														
														Wild	Sabin	VDPV	Wild	Sabin	VDPV	Wild	Sabin	VDPV												
Australia	VIDRL	40	0	0	2	38	0	0	96%	3%	11-Nov-14	VIDRL	0	-	-	-	-	-	-	-	-	-	-	-	-	-	-	-	-	-	-			
Brunei Darussalam	VIDRL	1	0	0	0	1	0	0	0%	0%	11-Nov-14	VIDRL	0	-	-	-	-	-	-	-	-	-	-	-	-	-	-	-	-	-	-	-		
Papua New Guinea	VIDRL	10	0	1	4	5	0	0	100%	50%	11-Nov-14	VIDRL	4	0	0	0	0	0	0	2	0	0	0	0	0	0	0	0	0	0	100%			
Pacific island countries	VIDRL	10	0	0	0	9	0	1	100%	0%	11-Nov-14	VIDRL	0	-	-	-	-	-	-	-	-	-	-	-	-	-	-	-	-	-	-	-		
Japan	NIID	0	-	-	-	-	-	-	-	-	-	NIID	0	-	-	-	-	-	-	-	-	-	-	-	-	-	-	-	-	-	-	-		
Cambodia	NIID	67	5	0	10	52	0	0	96%	13%	09-Dec-14	NIID	8	0	0	0	0	8	0	0	0	0	0	0	0	0	0	0	0	0	100%			
Lao People's Democratic Republic	NIID	23	0	0	5	18	0	0	100%	20%	20-Oct-14	NIID	0	-	-	-	-	-	-	-	-	-	-	-	-	-	-	-	-	-	-	-		
Malaysia	IMR	156	0	0	4	147	5	0	100%	2%	10-Dec-14	IMR	0	-	-	-	-	-	-	-	-	-	-	-	-	-	-	-	-	-	-	-	-	
Mongolia	PHI	5	0	0	1	3	1	0	100%	25%	10-Dec-14	NIID	0	-	-	-	-	-	-	-	-	-	-	-	-	-	-	-	-	-	-	-	-	
New Zealand	IESR	5	0	0	1	4	0	0	91%	18%	02-Dec-14	IESR	0	-	-	-	-	-	-	-	-	-	-	-	-	-	-	-	-	-	-	-	-	
Philippines	RITM	304	4	0	12	273	15	0	90%	3%	09-Dec-14	RITM	9	0	2	0	0	6	0	0	0	0	0	0	0	1	0	0	0	0	100%			
Republic of Korea	NIH	76	0	1	8	67	0	0	96%	11%	18-Nov-14	NIH	2	0	0	0	0	0	0	0	0	0	0	0	2	0	0	0	0	0	100%			
Singapore	SGH	8	0	0	0	8	0	0	100%	0%	27-Oct-14	SGH	0	-	-	-	-	-	-	-	-	-	-	-	-	-	-	-	-	-	-	-	-	
Viet Nam, North	NIHE	173	0	0	20	149	4	0	99%	10%	10-Nov-14	NIHE	0	-	-	-	-	-	-	-	-	-	-	-	-	-	-	-	-	-	-	-	-	
Viet Nam, South	PI	114	0	0	12	98	4	0	93%	10%	10-Nov-14	PI	0	-	-	-	-	-	-	-	-	-	-	-	-	-	-	-	-	-	-	-	-	
China (total)	CCDC	4881	85	1	532	4211	0	52	73%	9%	10-Dec-14		224	0	42	0	0	77	4	0	89	0	7	5	0	0	0	0	0	96%				
China, Anhui	Prov. Lab	272	12	0	26	233	0	1	80%	9%		Prov. Lab	22	0	2	0	0	7	0	0	13	0	0	0	0	0	0	0	100%					
China, Beijing	Prov. Lab	36	1	0	0	32	0	3	82%	0%		Prov. Lab	8	0	2	0	0	0	0	0	4	0	0	0	2	0	0	0	0	100%				
China, Fujian	Prov. Lab	178	1	0	24	153	0	0	92%	10%		Prov. Lab	3	0	0	0	0	0	0	0	3	0	0	0	0	0	0	0	0	100%				
China, Gansu	Prov. Lab	111	0	0	9	101	0	1	75%	7%		Prov. Lab	6	0	2	0	0	2	0	0	2	0	0	0	0	0	0	0	0	100%				
China, Guangdong	Prov. Lab	303	3	0	43	257	0	0	78%	12%		Prov. Lab	7	0	2	0	0	3	0	0	2	0	0	0	0	0	0	0	0	71%				
China, Guangxi	Prov. Lab	239	5	0	47	185	0	2	59%	16%		Prov. Lab	11	0	0	0	0	6	0	0	5	0	0	0	0	0	0	0	0	100%				
China, Hebei	Prov. Lab	268	8	1	36	221	0	2	65%	10%		Prov. Lab	9	0	2	0	0	4	2	0	1	0	0	0	0	0	0	0	0	100%				
China, Heilongjiang	Prov. Lab	130	2	0	6	121	0	1	89%	4%		Prov. Lab	6	0	0	0	0	2	0	0	3	0	1	0	0	0	0	0	100%					
China, Henan	Prov. Lab	446	3	0	55	385	0	3	81%	10%		Prov. Lab	6	0	1	0	0	2	0	0	3	0	0	0	0	0	0	0	0	75%				
China, Hunan	Prov. Lab	219	3	0	29	180	0	7	87%	13%		Prov. Lab	4	0	2	0	0	2	0	0	0	0	0	0	0	0	0	0	0	100%				
China, Jiangsu	Prov. Lab	283	17	0	3	262	0	1	77%	1%		Prov. Lab	39	0	7	0	0	15	0	0	16	0	0	1	0	0	0	0	97%					
China, Jiangxi	Prov. Lab	162	2	0	25	134	0	1	91%	14%		Prov. Lab	4	0	1	0	0	0	0	0	1	0	2	0	0	0	0	0	100%					
China, Jilin	Prov. Lab	50	0	0	7	43	0	0	63%	12%		Prov. Lab	0	-	-	-	-	-	-	-	-	-	-	-	-	-	-	-	-	-	-	-		
China, Shaanxi	Prov. Lab	96	1	0	4	84	0	7	85%	4%		Prov. Lab	2	0	0	0	0	2	0	0	0	0	0	0	0	0	0	0	0	100%				
China, Shandong	Prov. Lab	330	3	0	32	292	0	3	81%	7%		Prov. Lab	6	0	2	0	0	2	0	0	2	0	0	0	0	0	0	0	0	100%				
China, Shanghai	Prov. Lab	21	2	0	0	18	0	1	98%	0%		Prov. Lab	6	0	0	0	0	2	0	0	4	0	0	0	0	0	0	0	0	100%				
China, Shanxi	Prov. Lab	216	3	0	2	210	0	1	50%	1%		Prov. Lab	10	0	2	0	0	4	2	0	2	0	0	0	0	0	0	0	0	88%				
China, Sichuan	Prov. Lab	349	4	0	36	306	0	3	35%	9%		Prov. Lab	10	0	4	0	0	4	0	0	2	0	0	0	0	0	0	0	0	100%				
China, Tianjin	Prov. Lab	22	0	0	3	18	0	1	90%	12%		Prov. Lab	4	0	0	0	0	2	0	0	2	0	0	0	0	0	0	0	0	100%				
China, Xinjiang	Prov. Lab	80	1	0	5	71	0	3	95%	5%		Prov. Lab	4	0	2	0	0	2	0	0	0	0	0	0	0	0	0	0	0	100%				
China, Yunnan	Prov. Lab	224	11	0	36	177	0	0	51%	13%		Prov. Lab	24	0	7	0	0	7	0	0	10	0	0	0	0	0	0	0	0	93%				
China, Zhejiang	Prov. Lab	155	2	0	20	131	0	2	64%	10%		Prov. Lab	8	0	0	0	0	2	0	0	4	0	2	0	0	0	0	0	100%					
China, Chongqing	Prov. Lab	68	0	0	13	55	0	0	74%	15%		CCDC	4	0	0	0	0	2	0	0	2	0	0	0	0	0	0	0	100%					
China, Guizhou	Prov. Lab	190	0	0	26	162	0	2	90%	13%		CCDC	9	0	0	0	0	5	0	0	4	0	0	0	0	0	0	0	86%					
China, Hainan	Prov. Lab	27	0	0	6	21	0	0	67%	19%		CCDC	0	-	-	-	-	-	-	-	-	-	-	-	-	-	-	-	-	-	-	-		
China, Hubei	Prov. Lab	160	0	0	21	139	0	0	55%	13%		CCDC	2	0	2	0	0	0	0	0	0	0	0	0	0	0	0	0	0	100%				
China, Liaoning	Prov. Lab	121	0	0	12	103	0	6	84%	9%		CCDC	6	0	0	0	0	0	0	0	2	0	2	2	0	0	0	0	100%					
China, Neimongol	Prov. Lab	76	0	0	3	72	0	1	65%	3%		CCDC	4	0	2	0	0	0	0	0	2	0	0	0	0	0	0	0	0	100%				
China, Ningxia	Prov. Lab	29	1	0	0	28	0	0	74%	0%		CCDC	0	-	-	-	-	-	-	-	-	-	-	-	-	-	-	-	-	-	-	-		
China, Qinghai	Prov. Lab	18	0	0	3	15	0	0	92%	17%		CCDC	0	-	-	-	-	-	-	-	-	-	-	-	-	-	-	-	-	-	-	-	-	
China, Tibet	Prov. Lab	2	0	0	0	2	0	0	67%	0%		CCDC	0	-	-	-	-	-	-	-	-	-	-	-	-	-	-	-	-	-	-	-	-	
Hong Kong (China)	PHLC	16	0	0	4	11	1	0	91%	13%	19-Nov-14	PHLC	0	-	-	-	-	-	-	-	-	-	-	-	-	-	-	-	-	-	-	-	-	
Macao (China)	PHLC	0	-	-	-	-	-	-	-	-	19-Nov-14	PHLC	0	-	-	-	-	-	-	-	-	-	-	-	-	-	-	-	-	-	-	-	-	-
Total		5889	94	3	615	5094	30	53	74%	9%			247	0	44	0	0	91	4	0	91	0	11	6	0	0	0	0	96%					

1. IESR (Institute of Environmental Science and Research, New Zealand); IMR (Institute of Medical Research, Malaysia); NIH (National Institute of Health, Republic of Korea); NIHE (National Institute of Hygiene and Epidemiology, Ha Noi, Viet Nam); NIID (National Institute of Infectious Diseases, Japan); PHI (Public Health Institute, Mongolia); PHLC (Public Health Laboratory Center, Hong Kong); PI (Pasteur Institute, Ho Chi Minh, Viet Nam); RITM (Research Institute for Tropical Medicine, Philippines); SGH (Singapore General Hospital); VIDRL (Victorian Infectious Diseases Reference Laboratory, Australia)

2. The target of 14 days for the timeliness of virus isolation will be used for all polio laboratories

3. NPEV growing in L20B cells

4. Twenty-two provincial laboratories in China perform ITD from 2013

Table 4. Vaccine-derived poliovirus, 2000–2014

Country	2000	2001	2002	2003	2004	2005	2006	2007	2008	2009	2010	2011	2012	2013	2014
Cambodia						cVDPV3 (1 case)	cVDPV3 (1 case)								
China	aVDPV1 (1 case)	IVDPV1 (1 case) aVDPV3 (1 case)	aVDPV1 (1 case) aVDPV3 (1 case)		cVDPV1 (2 cases) ?VDPV1 (4 cases) ?VDPV2 (1 case)	IVDPV2 (1 case)	aVDPV1 (1 case) ?VDPV1 (7 cases) VDPV3 (1 case)	aVDPV1 (3 cases) ?VDPV1 (1 case)		aVDPV2 (1 case)	aVDPV2 (5 cases) aVDPV3 (2 cases)	aVDPV1 (1 case) aVDPV2 (3 cases) cVDPV2 (2 cases) IVDPV2 (2 cases) IVDPV3 (1 case)	aVDPV1 (1 case) aVDPV2 (2 cases) cVDPV2 (3 cases) IVDPV2 + IVDPV3 (1 case)	aVDPV2 (1 case) IVDPV2 + IVDPV3 (1 case)	aVDPV2 (1 case)
Hong Kong (China)						?VDPV? (3 cases)									
Japan					?VDPV? (1 case)	?VDPV3 (1 case)									
Lao People's Democratic Republic					aVDPV2 (1 case) ?VDPV? (2 cases)										
Mongolia				?VDPV? (1 case)											
Philippines		cVDPV1 (3 cases)													
Viet Nam													aVDPV2 (2 cases)		