

HIGHLIGHTS

Mongolia “dry run” of the switch: replacing tOPV with bOPV from April 2016

1–6 July 2015 — The World Health Assembly (WHA) urges all Member States that currently use oral poliovirus vaccine to prepare for the global withdrawal of the type 2 component of trivalent OPV (tOPV) to bivalent OPV (bOPV). This unprecedented and global synchronized effort is scheduled for April 2016.

To meet this timeline, it is imperative that all OPV-using countries begin switch planning during Q2 2015 and finalize a National Switch Plan by September 2015. Seventeen OPV-using countries in the Regional Office for the Western Pacific (WPRO) would participate in switch in April 2016. A “dry run” in Mongolia was organized in order to test general global guidance materials and explore areas of barriers and to identify potential solutions along with the objectives for early planning and understanding the context of training and briefing of staff working in EPI Mongolia. This simulation would also leverage countries in the Region to “learn by doing” through assessing potential successful strategies for developing a Switch Plan.

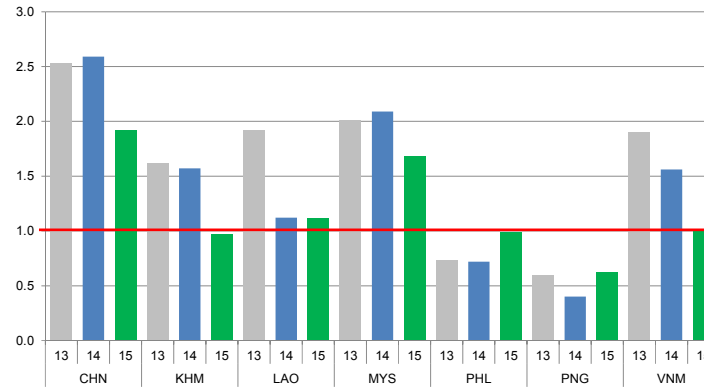
Thirty five participants from National Centre for Communicable Disease (NCCD), selected EPI managers from provincial and district level and resource persons from WHO and UNICEF attended the workshop. The first two days of the workshop focused on building awareness and understanding of the global switch along with comprehensive content, discussions and group work to build on a plan for the country. This was followed by some field visits to UB city and Selenge province and covered national, provincial, districts stores and family clinics. The overall activities had implications on defining the management and coordination, vaccine procurement and stock management, communications and training and validation for the country’s switch plan. With clear directions of the key steps in the months ahead, OPV switch in Mongolia seems feasible. Opportunities available with IPV introduction, such as trainings of health workers, are scheduled for January 2016.



CONTACT US

Expanded Programme on Immunization
Regional Office for the Western Pacific
World Health Organization
P.O. Box 2932, 1000 Manila, Philippines
Phone: +63 2 5288001
Fax: +63 2 5211036, 5260279
Email: WPR_EPIdata@wpro.who.int
Web: www.wpro.who.int/immunization

Chart 1. Non-polio AFP rate (per 100 000 persons < 15 years of age), 2013–2015*



* AFP rate annualized as of week 29

Chart 2. Adequate specimen collection rate, 2013–2015

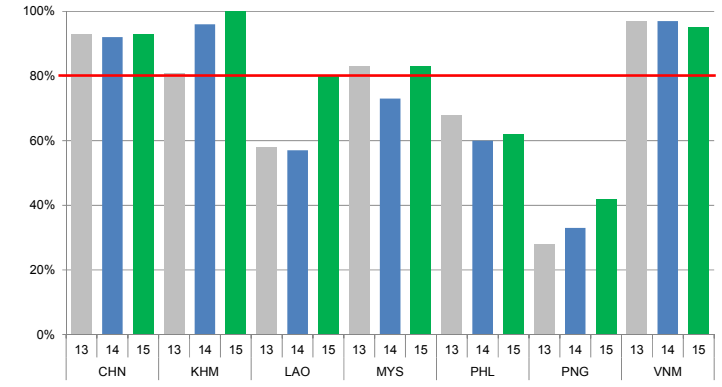


Chart 3. Percentage of reported AFP cases by number of polio vaccination doses, 2015

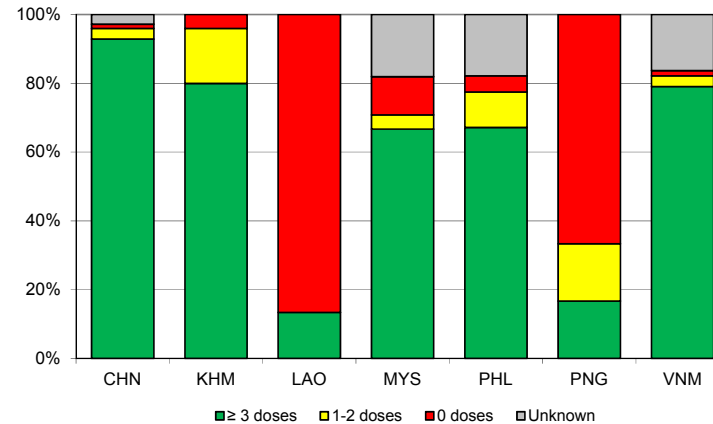
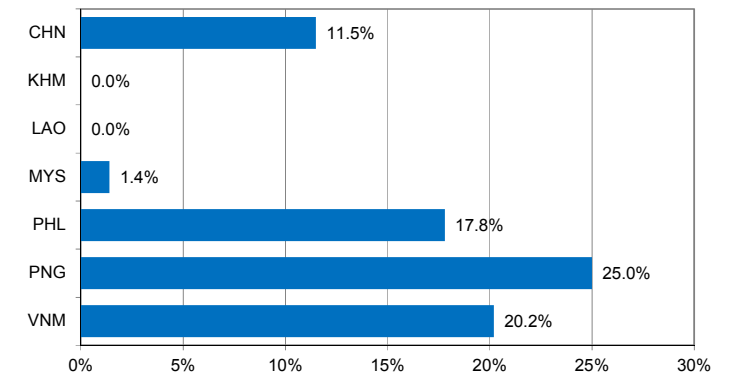


Chart 4. Percentage of reported AFP cases with pending classification > 90 days after onset, 2015



Note: Priority countries were selected for the charts. Official WHO acronyms have been used for abbreviation: CHN (China), KHM (Cambodia), LAO (Lao People’s Democratic Republic), MYS (Malaysia), PHL (Philippines), PNG (Papua New Guinea), and VNM (Viet Nam).

Table 1A. Classification of AFP cases with onset in 2014 and key surveillance indicators

	2013		2014												
	Total reported cases	Annual expected cases <15 years of age	Total reported cases	Classification						Indicators				Latest report date ⁵	Days since last report ⁶
				Confirmed wild poliovirus	Vaccine-derived poliovirus (VDPV)	Polio-compatible	Discarded (Non-polio)	Pending		Non-polio AFP rate	% with adequate specimens ²	% investigated ≤ 2 days of notification ³	% with 60-day follow-up ⁴		
								Total	> 90 days ¹ # (%)						≥ 1
Australia	62	44	60	0	0	2	58	0	0 (0.0%)	1.36	50%	83%	0%	07-Apr-15	-
Brunei Darussalam	1	1	4	0	0	0	4	0	0 (0.0%)	4.00	75%	100%	100%	07-Apr-15	-
Cambodia	73	46	72	0	0	0	72	0	0 (0.0%)	1.57	96%	93%	100%	14-May-15	-
China	5623	2225	5758	0	2	0	5756	0	0 (0.0%)	2.59	92%	100%	96%	13-May-15	-
China, Hong Kong SAR	12	8	19	0	0	0	19	0	0 (0.0%)	2.38	89%	100%	100%	05-Mar-15	-
China, Macao SAR	1	1	1	0	0	0	1	0	0 (0.0%)	1.00	0%	100%	100%	13-Jan-15	-
Japan	0	167	0	-	-	-	-	-	-	-	-	-	-	-	-
Lao People's Democratic Republic	48	25	28	0	0	0	28	0	0 (0.0%)	1.12	57%	93%	83%	27-Apr-15	-
Malaysia	155	77	161	0	0	0	161	0	0 (0.0%)	2.09	73%	87%	100%	10-Mar-15	-
Mongolia	7	8	9	0	0	0	9	0	0 (0.0%)	1.13	89%	100%	100%	05-Mar-15	-
New Zealand	12	9	8	0	0	0	8	0	0 (0.0%)	0.89	38%	100%	80%	11-Mar-15	-
Papua New Guinea	18	30	12	0	0	0	12	0	0 (0.0%)	0.40	33%	75%	0%	07-Apr-15	-
Philippines	277	378	272	0	1	0	271	0	0 (0.0%)	0.72	60%	97%	6%	26-Jun-15	-
Republic of Korea	84	72	88	0	0	0	88	0	0 (0.0%)	1.22	86%	98%	100%	16-Feb-15	-
Singapore	7	6	8	0	0	0	8	0	0 (0.0%)	1.33	75%	88%	100%	07-Jan-15	-
Viet Nam	459	231	361	0	0	0	361	0	0 (0.0%)	1.56	97%	93%	100%	14-Apr-15	-
Pacific island countries and areas	8	10	15	0	0	0	10	5	5 (33.3%)	1.50	67%	93%	80%	30-Jun-15	20
Total	6847	3338	6876	0	3	2	6866	5	5 (0.1%)	2.06	90%	99%	77%		

1. Number (%) of reported cases pending classification more than 90 days from date of onset of paralysis to date of last report
2. Percentage of reported cases with two stool specimens collected 24 hours apart and within 14 days of onset of paralysis
3. Percentage of reported cases investigated within two days of notification
4. Percentage of reported cases with inadequate specimens for which the 60-day follow-up evaluation has been completed
5. Report date is fixed as soon as all cases for the year have been classified
6. Countries are expected to submit data at least once per month to WPRO

Green	Reached or surpassed target
Yellow	Nearly reached target: 0.5–0.99 for non-polio AFP rate; 60–79% for other indicators
Red	Substantially below target

Table 1B. Classification of AFP cases with onset in 2015 and key surveillance indicators

	2014		2015												
	Total reported cases	Annual expected cases <15 years of age	Total reported cases	Classification						Indicators				Latest report date	Days since last report ⁶
				Confirmed wild poliovirus	Vaccine-derived poliovirus (VDPV)	Polio-compatible	Discarded (Non-polio)	Pending		Non-polio AFP rate ²	% with adequate specimens ³	% investigated ≤ 2 days of notification ⁴	% with 60-day follow-up ⁵		
								Total	> 90 days ¹ # (%)						
Australia	60	44	25	0	0	0	13	12	1 (4.0%)	1.02	24%	100%	0%	17-Jul-15	3
Brunei Darussalam	4	1	2	0	0	0	2	0	0 (0.0%)	3.59	100%	100%	-	13-Jul-15	7
Cambodia	72	46	25	0	0	0	19	6	0 (0.0%)	0.97	100%	100%	-	07-Jul-15	13
China	5758	2234	2388	0	0	0	1334	1054	275 (11.5%)	1.92	93%	100%	68%	15-Jul-15	5
China, Hong Kong SAR	19	8	7	0	0	0	7	0	0 (0.0%)	1.57	86%	100%	100%	03-Jul-15	17
China, Macao SAR	1	1	1	0	0	0	1	0	0 (0.0%)	1.79	100%	100%	-	15-Jul-15	5
Japan	0	163	0	-	-	-	-	-	-	-	-	-	-	-	-
Lao People's Democratic Republic	28	24	15	0	0	0	13	2	0 (0.0%)	1.12	80%	93%	67%	29-Jun-15	21
Malaysia	161	77	72	0	0	0	53	19	1 (1.4%)	1.68	83%	65%	42%	10-Jul-15	10
Mongolia	9	9	5	0	0	0	3	2	0 (0.0%)	1.00	100%	100%	-	02-Jul-15	18
New Zealand	8	9	3	0	0	0	0	3	1 (33.3%)	0.60	33%	100%	0%	30-Jun-15	20
Papua New Guinea	12	34	12	0	0	0	6	6	3 (25.0%)	0.63	42%	75%	0%	10-Jul-15	10
Philippines	272	387	213	0	0	0	90	123	38 (17.8%)	0.99	62%	98%	8%	16-Jul-15	4
Republic of Korea	88	70	41	0	0	0	35	6	0 (0.0%)	1.05	83%	100%	86%	15-Jul-15	5
Singapore	8	6	4	0	0	0	4	0	0 (0.0%)	1.20	100%	100%	-	06-Jul-15	14
Viet Nam	361	231	129	0	0	0	39	90	26 (20.2%)	1.00	95%	97%	0%	29-Jun-15	21
Pacific island countries and areas	15	10	1	0	0	0	1	0	0 (0.0%)	0.18	100%	100%	-	30-Jun-15	20
Total	6876	3354	2943	0	0	0	1620	1323	345 (11.7%)	1.57	89%	99%	45%		

1. Number (%) of reported cases pending classification more than 90 days from date of onset of paralysis to date of last report
2. Annualized non-polio AFP rate per 100 000 population under 15 years of age
3. Percentage of reported cases with two stool specimens collected 24 hours apart and within 14 days of onset of paralysis
4. Percentage of reported cases investigated within two days of notification
5. Percentage of reported cases with inadequate specimens for which the 60-day follow-up evaluation has been completed
6. Countries are expected to submit data at least once per month to WPRO

Green	Reached or surpassed target
Yellow	Nearly reached target: 0.5–0.99 for non-polio AFP rate; 60–79% for other indicators
Red	Substantially below target

Table 2A. Laboratory investigation of AFP cases with onset in 2014 and key laboratory indicators

Country	National polio laboratory	Total no. of AFP cases with specimens	Virus isolation results							% specimens positive for NPEV	Latest report date	Intraventricular differentiation/ Sequencing lab ¹	No. of isolates received	Intraventricular differentiation (ITD)/sequencing results																	
			L20B positive	L20B positive + NPEV	NPEV only	Negative	Pending ≤ 14 days	Pending > 14 days	% reports completed ≤ 14 days ²					Type 1			Type 2			Type 3			NPEV ³	Pending ITD	Discordant pending sequencing	% ITD results reported ≤ 7 days of receipt ≥ 80%					
														Wild	Sabin	VDPV	Wild	Sabin	VDPV	Wild	Sabin	VDPV									
Australia	VIDRL	45	0	0	2	43	0	0	96%	2%	22-Jan-15	VIDRL	0	-	-	-	-	-	-	-	-	-	-	-	-	-	-	-	-	-	
Brunei Darussalam	VIDRL	2	0	0	0	2	0	0	50%	0%	22-Jan-15	VIDRL	0	-	-	-	-	-	-	-	-	-	-	-	-	-	-	-	-	-	
Cambodia	NIID	73	5	0	12	56	0	0	96%	14%	02-Feb-15	NIID	10	0	0	0	0	10	0	0	0	0	0	0	0	0	0	0	0	0	100%
China		5694	112	1	588	4993	0	0	75%	9%	13-May-15		307	0	72	0	0	106	4	0	116	2	7	0	0	0	0	0	0	95%	
China, Anhui	Prov. Lab	334	20	0	26	288	0	0	83%	7%		Prov. Lab/CCDC	45	0	10	0	0	14	0	0	21	0	0	0	0	0	0	0	0	91%	
China, Beijing	Prov. Lab	41	1	0	0	40	0	0	82%	0%		Prov. Lab/CCDC	11	0	3	0	0	1	0	0	7	0	0	0	0	0	0	0	0	100%	
China, Fujian	Prov. Lab	213	2	0	27	184	0	0	92%	10%		Prov. Lab/CCDC	3	0	0	0	0	0	0	0	3	0	0	0	0	0	0	0	0	100%	
China, Gansu	Prov. Lab	121	0	0	8	113	0	0	79%	5%		Prov. Lab/CCDC	6	0	2	0	0	2	0	0	2	0	0	0	0	0	0	0	0	100%	
China, Guangdong	Prov. Lab	354	4	0	47	303	0	0	81%	11%		Prov. Lab/CCDC	9	0	4	0	0	3	0	0	2	0	0	0	0	0	0	0	0	78%	
China, Guangxi	Prov. Lab	278	6	0	57	215	0	0	64%	17%		Prov. Lab/CCDC	12	0	0	0	0	7	0	0	5	0	0	0	0	0	0	0	0	100%	
China, Hebei	Prov. Lab	332	11	1	37	283	0	0	69%	8%		Prov. Lab/CCDC	11	0	2	0	0	6	2	0	1	0	0	0	0	0	0	0	0	100%	
China, Heilongjiang	Prov. Lab	150	2	0	7	141	0	0	89%	4%		Prov. Lab/CCDC	6	0	0	0	0	2	0	0	3	0	1	0	0	0	0	0	0	100%	
China, Henan	Prov. Lab	535	4	0	61	470	0	0	80%	9%		Prov. Lab/CCDC	6	0	1	0	0	2	0	0	3	0	0	0	0	0	0	0	0	75%	
China, Hunan	Prov. Lab	267	4	0	37	226	0	0	90%	13%		Prov. Lab/CCDC	4	0	2	0	0	2	0	0	0	0	0	0	0	0	0	0	0	100%	
China, Jiangsu	Prov. Lab	319	18	0	3	298	0	0	79%	1%		Prov. Lab/CCDC	44	0	7	0	0	15	0	0	20	2	0	0	0	0	0	0	0	97%	
China, Jiangxi	Prov. Lab	190	2	0	27	161	0	0	92%	13%		Prov. Lab/CCDC	4	0	1	0	0	0	0	0	1	0	2	0	0	0	0	0	0	100%	
China, Jilin	Prov. Lab	54	1	0	7	46	0	0	66%	11%		Prov. Lab/CCDC	4	0	1	0	0	1	0	0	2	0	0	0	0	0	0	0	0	100%	
China, Shaanxi	Prov. Lab	95	1	0	2	92	0	0	89%	2%		Prov. Lab/CCDC	2	0	0	0	0	2	0	0	0	0	0	0	0	0	0	0	0	100%	
China, Shandong	Prov. Lab	397	5	0	39	353	0	0	83%	7%		Prov. Lab/CCDC	8	0	3	0	0	3	0	0	2	0	0	0	0	0	0	0	0	100%	
China, Shanghai	Prov. Lab	29	2	0	0	27	0	0	98%	0%		Prov. Lab/CCDC	6	0	0	0	0	2	0	0	4	0	0	0	0	0	0	0	0	0	100%
China, Shanxi	Prov. Lab	205	4	0	2	199	0	0	55%	1%		Prov. Lab/CCDC	12	0	2	0	0	6	2	0	2	0	0	0	0	0	0	0	0	90%	
China, Sichuan	Prov. Lab	411	4	0	42	365	0	0	42%	9%		Prov. Lab/CCDC	10	0	4	0	0	4	0	0	2	0	0	0	0	0	0	0	0	100%	
China, Tianjin	Prov. Lab	27	0	0	3	24	0	0	93%	9%		Prov. Lab/CCDC	10	0	2	0	0	4	0	0	4	0	0	0	0	0	0	0	0	100%	
China, Xinjiang	Prov. Lab	98	1	0	5	92	0	0	96%	4%		Prov. Lab/CCDC	6	0	4	0	0	2	0	0	0	0	0	0	0	0	0	0	0	100%	
China, Yunnan	Prov. Lab	267	11	0	39	217	0	0	51%	11%		Prov. Lab/CCDC	24	0	7	0	0	7	0	0	10	0	0	0	0	0	0	0	0	93%	
China, Zhejiang	Prov. Lab	189	2	0	20	167	0	0	69%	8%		Prov. Lab/CCDC	8	0	0	0	0	2	0	0	4	0	2	0	0	0	0	0	0	100%	
China, Chongqing	Prov. Lab	73	0	0	14	59	0	0	71%	15%		CCDC	4	0	0	0	0	2	0	0	2	0	0	0	0	0	0	0	0	100%	
China, Guizhou	Prov. Lab	206	0	0	23	183	0	0	90%	10%		CCDC	13	0	0	0	0	7	0	0	6	0	0	0	0	0	0	0	0	82%	
China, Hainan	Prov. Lab	43	0	0	7	36	0	0	76%	14%		CCDC	0	-	-	-	-	-	-	-	-	-	-	-	-	-	-	-	-	-	
China, Hubei	Prov. Lab	186	2	0	23	161	0	0	60%	12%		CCDC	6	0	4	0	0	0	0	0	2	0	0	0	0	0	0	0	0	100%	
China, Liaoning	Prov. Lab	137	1	0	18	118	0	0	85%	11%		CCDC	19	0	9	0	0	4	0	0	4	0	2	0	0	0	0	0	0	100%	
China, Neimongol	Prov. Lab	88	2	0	3	83	0	0	64%	2%		CCDC	8	0	4	0	0	2	0	0	2	0	0	0	0	0	0	0	0	100%	
China, Ningxia	Prov. Lab	31	2	0	0	29	0	0	76%	0%		CCDC	6	0	0	0	0	4	0	0	2	0	0	0	0	0	0	0	0	100%	
China, Qinghai	Prov. Lab	21	0	0	4	17	0	0	93%	17%		CCDC	0	-	-	-	-	-	-	-	-	-	-	-	-	-	-	-	-	-	
China, Tibet	Prov. Lab	3	0	0	0	3	0	0	75%	0%		CCDC	0	-	-	-	-	-	-	-	-	-	-	-	-	-	-	-	-	-	
China, Hong Kong SAR	PHLC	19	0	0	4	15	0	0	93%	11%	13-Jan-15	PHLC	0	-	-	-	-	-	-	-	-	-	-	-	-	-	-	-	-	-	
China, Macao SAR	PHLC	0	-	-	-	-	-	-	-	-	13-Jan-15	PHLC	0	-	-	-	-	-	-	-	-	-	-	-	-	-	-	-	-	-	
Japan	NIID	0	-	-	-	-	-	-	-	-	-	NIID	0	-	-	-	-	-	-	-	-	-	-	-	-	-	-	-	-	-	
Lao People's Democratic Republic	NIID	25	1	0	5	19	0	0	100%	18%	22-Jan-15	NIID	0	-	-	-	-	-	-	-	-	-	-	-	-	-	-	-	-	-	
Malaysia	IMR	164	0	0	4	160	0	0	100%	2%	10-Feb-15	IMR	0	-	-	-	-	-	-	-	-	-	-	-	-	-	-	-	-	-	
Mongolia	PHI	9	0	0	1	8	0	0	100%	11%	16-Mar-15	NIID	0	-	-	-	-	-	-	-	-	-	-	-	-	-	-	-	-	-	
New Zealand	IESR	5	0	0	1	4	0	0	91%	18%	12-Jan-15	IESR	0	-	-	-	-	-	-	-	-	-	-	-	-	-	-	-	-	-	
Papua New Guinea	VIDRL	10	0	1	4	5	0	0	100%	50%	22-Jan-15	VIDRL	4	0	0	0	0	0	0	0	2	0	2	0	0	0	0	0	0	100%	
Philippines	RITM	342	5	0	13	324	0	0	88%	3%	11-Mar-15	RITM	13	0	4	0	0	6	1	0	2	0	0	0	0	0	0	0	0	100%	
Republic of Korea	NIH	88	0	1	8	80	0	0	97%	10%	16-Feb-15	NIH	2	0	0	0	0	0	0	0	0	0	2	0	0	0	0	0	0	100%	
Singapore	SGH	8	0	0	0	8	0	0	100%	0%	14-Jan-15	SGH	0	-	-	-	-	-	-	-	-	-	-	-	-	-	-	-	-	-	
Viet Nam (North)	NIHE	216	0	0	30	186	0	0	100%	12%	11-Feb-15	NIHE	0	-	-	-	-	-	-	-	-	-	-	-	-	-	-	-	-	-	
Viet Nam (South)	PI	136	0	0	16	120	0	0	93%	11%	21-Jan-15	PI	0	-	-	-	-	-	-	-	-	-	-	-	-	-	-	-	-	-	
Pacific island countries and areas	VIDRL	12	0	0	1	11	0	0	100%	4%	22-Jan-15	VIDRL	0	-	-	-	-	-	-	-	-	-	-	-	-	-	-	-	-	-	
Total		6848	123	3	689	6034	0	0	76%	9%			336	0	76	0	0	122	5	0	120	2	11	0	0	0	0	0	96%		

1. CCDC (Chinese Center for Disease Control and Prevention, China); IESR (Institute of Environmental Science and Research, New Zealand); IMR (Institute of Medical Research, Malaysia); NIH (National Institute of Health, Republic of Korea); NIHE (National Institute of Hygiene and Epidemiology, Hanoi, Viet Nam); NIID (

Table 2B. Laboratory investigation of AFP cases with onset in 2015 and key laboratory indicators

Country	National polio laboratory	Total no. of AFP cases with specimens	Virus isolation results							% specimens positive for NPEV	Latest report date	Intraviral differentiation/Sequencing lab ¹	No. of isolates received	Intraviral differentiation (ITD)/sequencing results																
			L20B positive	L20B positive + NPEV	NPEV only	Negative	Pending ≤ 14 days	Pending > 14 days	% results reported ≤ 14 days ²					Type 1			Type 2			Type 3			NPEV ³	Pending ITD	Discordant pending sequencing	% ITD results reported ≤ 7 days of receipt ≥ 80%				
														Wild	Sabin	VDPV	Wild	Sabin	VDPV	Wild	Sabin	VDPV								
Australia	VIDRL	18	0	0	0	17	1	0	86%	0%	17-Jul-15	VIDRL	0	-	-	-	-	-	-	-	-	-	-	-	-	-	-	-	-	
Brunei Darussalam	VIDRL	2	0	0	0	1	1	0	100%	0%	17-Jul-15	VIDRL	0	-	-	-	-	-	-	-	-	-	-	-	-	-	-	-	-	
Cambodia	NIID	24	0	0	3	21	0	0	88%	13%	17-Jul-15	NIID	0	-	-	-	-	-	-	-	-	-	-	-	-	-	-	-	-	
China		2352	33	0	184	2086	4	45	97%	7%	15-Jul-15		70	0	20	1	0	27	4	0	18	0	0	0	0	0	0	0	0	95%
China, Anhui	Prov. Lab	128	2	0	8	117	0	1	94%	6%		Prov. Lab/CCDC	4	0	1	0	0	1	0	0	2	0	0	0	0	0	0	0	100%	
China, Beijing	Prov. Lab	16	0	0	0	16	0	0	100%	0%		Prov. Lab/CCDC	2	0	0	0	0	2	0	0	0	0	0	0	0	0	0	0	0%	
China, Fujian	Prov. Lab	70	2	0	17	51	0	0	97%	24%		Prov. Lab/CCDC	2	0	0	0	0	2	0	0	0	0	0	0	0	0	0	0	100%	
China, Gansu	Prov. Lab	38	0	0	4	34	0	0	100%	7%		Prov. Lab/CCDC	0	-	-	-	-	-	-	-	-	-	-	-	-	-	-	-	-	
China, Guangdong	Prov. Lab	137	7	0	6	121	1	2	97%	4%		Prov. Lab/CCDC	21	0	4	0	0	10	2	0	5	0	0	0	0	0	0	0	100%	
China, Guangxi	Prov. Lab	121	1	0	17	103	0	0	99%	11%		Prov. Lab/CCDC	2	0	0	0	0	0	0	0	2	0	0	0	0	0	0	0	100%	
China, Hebei	Prov. Lab	129	1	0	11	117	0	0	100%	7%		Prov. Lab/CCDC	0	-	-	-	-	-	-	-	-	-	-	-	-	-	-	-	-	
China, Heilongjiang	Prov. Lab	65	0	0	0	65	0	0	100%	0%		Prov. Lab/CCDC	0	-	-	-	-	-	-	-	-	-	-	-	-	-	-	-	-	
China, Henan	Prov. Lab	235	4	0	24	202	0	5	94%	8%		Prov. Lab/CCDC	9	0	7	0	0	0	0	0	2	0	0	0	0	0	0	0	100%	
China, Hunan	Prov. Lab	129	0	0	10	117	0	2	96%	7%		Prov. Lab/CCDC	0	-	-	-	-	-	-	-	-	-	-	-	-	-	-	-	-	
China, Jiangsu	Prov. Lab	101	2	0	1	98	0	0	97%	1%		Prov. Lab/CCDC	2	0	2	0	0	0	0	0	0	0	0	0	0	0	0	0	100%	
China, Jiangxi	Prov. Lab	79	4	0	3	71	0	1	100%	3%		Prov. Lab/CCDC	6	0	2	0	0	4	0	0	0	0	0	0	0	0	0	0	100%	
China, Jilin	Prov. Lab	28	0	0	3	25	0	0	100%	7%		Prov. Lab/CCDC	0	-	-	-	-	-	-	-	-	-	-	-	-	-	-	-	-	
China, Shaanxi	Prov. Lab	45	0	0	1	38	0	6	94%	1%		Prov. Lab/CCDC	0	-	-	-	-	-	-	-	-	-	-	-	-	-	-	-	-	
China, Shandong	Prov. Lab	178	0	0	12	165	1	0	98%	4%		Prov. Lab/CCDC	0	-	-	-	-	-	-	-	-	-	-	-	-	-	-	-	-	
China, Shanghai	Prov. Lab	23	0	0	0	23	0	0	100%	0%		Prov. Lab/CCDC	0	-	-	-	-	-	-	-	-	-	-	-	-	-	-	-	-	
China, Shanxi	Prov. Lab	81	0	0	4	76	0	1	88%	4%		Prov. Lab/CCDC	0	-	-	-	-	-	-	-	-	-	-	-	-	-	-	-	-	
China, Sichuan	Prov. Lab	160	0	0	15	136	0	9	93%	9%		Prov. Lab/CCDC	0	-	-	-	-	-	-	-	-	-	-	-	-	-	-	-	-	
China, Tianjin	Prov. Lab	25	1	0	0	24	0	0	100%	0%		Prov. Lab/CCDC	2	0	0	0	0	0	0	0	2	0	0	0	0	0	0	0	100%	
China, Xinjiang	Prov. Lab	54	2	0	1	46	1	4	98%	2%		Prov. Lab/CCDC	6	0	2	0	0	4	0	0	0	0	0	0	0	0	0	0	100%	
China, Yunnan	Prov. Lab	92	3	0	11	74	1	3	99%	10%		Prov. Lab/CCDC	3	0	0	0	0	2	0	0	1	0	0	0	0	0	0	0	100%	
China, Zhejiang	Prov. Lab	84	3	0	6	74	0	1	92%	5%		Prov. Lab/CCDC	6	0	2	1	0	2	0	0	1	0	0	0	0	0	0	0	0	100%
China, Chongqing	Prov. Lab	46	1	0	5	38	0	2	98%	8%		CCDC	3	0	0	0	0	0	0	0	3	0	0	0	0	0	0	0	67%	
China, Guizhou	Prov. Lab	101	0	0	16	78	0	7	98%	15%		CCDC	0	-	-	-	-	-	-	-	-	-	-	-	-	-	-	-	-	
China, Hainan	Prov. Lab	16	0	0	1	15	0	0	88%	6%		CCDC	0	-	-	-	-	-	-	-	-	-	-	-	-	-	-	-	-	
China, Hubei	Prov. Lab	73	0	0	8	65	0	0	96%	10%		CCDC	0	0	0	0	0	0	0	0	0	0	0	0	0	0	0	0	100%	
China, Liaoning	Prov. Lab	39	0	0	0	39	0	0	100%	0%		CCDC	2	0	0	0	0	0	2	0	0	0	0	0	0	0	0	0	100%	
China, Neimongol	Prov. Lab	39	0	0	0	38	0	1	100%	0%		CCDC	0	-	-	-	-	-	-	-	-	-	-	-	-	-	-	-	-	
China, Ningxia	Prov. Lab	11	0	0	0	11	0	0	95%	0%		CCDC	0	-	-	-	-	-	-	-	-	-	-	-	-	-	-	-	-	
China, Qinghai	Prov. Lab	7	0	0	0	7	0	0	100%	0%		CCDC	0	-	-	-	-	-	-	-	-	-	-	-	-	-	-	-	-	
China, Tibet	Prov. Lab	2	0	0	0	2	0	0	100%	0%		CCDC	0	-	-	-	-	-	-	-	-	-	-	-	-	-	-	-	-	
China, Hong Kong SAR	PHLC	7	0	0	0	7	0	0	91%	0%	20-Jul-15	PHLC	0	-	-	-	-	-	-	-	-	-	-	-	-	-	-	-	-	
China, Macao SAR	PHLC	0	-	-	-	-	-	-	-	-	20-Jul-15	PHLC	0	-	-	-	-	-	-	-	-	-	-	-	-	-	-	-	-	
Japan	NIID	0	-	-	-	-	-	-	-	-	-	NIID	0	-	-	-	-	-	-	-	-	-	-	-	-	-	-	-	-	
Lao People's Democratic Republic	NIID	15	0	0	2	13	0	0	100%	13%	13-Jul-15	NIID	0	-	-	-	-	-	-	-	-	-	-	-	-	-	-	-	-	
Malaysia	IMR	69	0	0	5	64	0	0	99%	6%	08-Jul-15	IMR	0	-	-	-	-	-	-	-	-	-	-	-	-	-	-	-	-	
Mongolia	PHI	6	0	0	1	5	0	0	92%	17%	20-Jul-15	NIID	0	-	-	-	-	-	-	-	-	-	-	-	-	-	-	-	-	
New Zealand	IESR	2	0	0	0	2	0	0	100%	0%	07-Jul-15	IESR	0	-	-	-	-	-	-	-	-	-	-	-	-	-	-	-	-	
Papua New Guinea	VIDRL	12	1	0	3	8	0	0	90%	25%	17-Jul-15	VIDRL	1	0	1	0	0	0	0	0	0	0	0	0	0	0	0	0	100%	
Philippines	RITM	301	1	0	34	249	16	1	88%	10%	09-Jul-15	RITM	2	0	0	0	0	0	0	0	2	0	0	0	0	0	0	0	0	100%
Republic of Korea	NIH	41	0	0	3	36	2	0	100%	8%	15-Jul-15	NIH	0	-	-	-	-	-	-	-	-	-	-	-	-	-	-	-	-	
Singapore	SGH	4	0	0	0	4	0	0	100%	0%	12-Jun-15	SGH	0	-	-	-	-	-	-	-	-	-	-	-	-	-	-	-	-	
Viet Nam (North)	NIHE	93	1	0	7	82	3	0	96%	7%	15-Jul-15	NIHE	2	0	2	0	0	0	0	0	0	0	0	0	0	0	0	0	100%	
Viet Nam (South)	PI	67	0	0	8	55	4	0	95%	13%	10-Jul-15	PI	0	-	-	-	-	-	-	-	-	-	-	-	-	-	-	-	-	
Pacific island countries and areas	VIDRL	2	0	0	0	1	1	0	100%	0%	17-Jul-15	VIDRL	0	-	-	-	-	-	-	-	-	-	-	-	-	-	-	-	-	
Total		3015	36	0	250	2651	32	46	96%	7%			75	0	23	1	0	27	4	0	20	0	0	0	0	0	0	0	96%	

1. CCDC (Chinese Center for Disease Control and Prevention, China); IESR (Institute of Environmental Science and Research, New Zealand); IMR (Institute of Medical Research, Malaysia); NIH (National Institute of Health, Republic of Korea); NIHE (National Institute of Hygiene and Epidemiology, Ha Noi, Viet Nam); NIID (National Institute of Infectious Diseases, Japan); PHI (Public Health Institute, Mongolia); PHLC (Public Health Laboratory Center, China, Hong Kong SAR); PI (Pasteur Institute, Ho Chi Minh, Viet Nam); RITM (Research Institute for Tropical Medicine, Philippines); SGH (Singapore General Hospital); VIDRL (Victorian Infectious Diseases Reference Laboratory, Australia)

2. The target of 14 days for the timeliness of virus isolation will be used for all polio laboratories

3. NPEV growing in L20B cells

Table 3A. Laboratory confirmation of polio isolates from other sources in 2014 ¹

Country	Intratype differentiation lab ²	Non-AFP cases												Environmental samples															
		Total number of non-AFP cases tested for polio	Total number of non-AFP cases with polio isolates	Type 1			Type 2			Type 3			NPEV	Pending ITD	Discordant pending sequencing	Total number of samples processed	Total number of samples with polio isolates	Type 1			Type 2			Type 3			NPEV	Pending ITD	Discordant pending sequencing
				Wild	Sabin	VDPV	Wild	Sabin	VDPV	Wild	Sabin	VDPV						Wild	Sabin	VDPV	Wild	Sabin	VDPV	Wild	Sabin	VDPV			
Australia	VIDRL	96	0	0	0	0	0	0	0	0	0	0	0	0	3	0	-	-	-	-	-	-	-	-	-	3	0	0	
Brunei Darussalam	VIDRL	0	-	-	-	-	-	-	-	-	-	-	-	-	0	-	-	-	-	-	-	-	-	-	-	-	-	-	
Cambodia	NIID	0	-	-	-	-	-	-	-	-	-	-	-	-	0	-	-	-	-	-	-	-	-	-	-	-	-	-	
China		3	3	0	3	0	0	0	0	0	1	0	0	0	167	167	0	79	0	0	129	2	0	115	0	0	0	0	
China, Anhui	Prov. Lab/CCDC	0	-	-	-	-	-	-	-	-	-	-	-	-	0	-	-	-	-	-	-	-	-	-	-	-	-	-	
China, Beijing	Prov. Lab/CCDC	0	-	-	-	-	-	-	-	-	-	-	-	-	0	-	-	-	-	-	-	-	-	-	-	-	-	-	
China, Fujian	Prov. Lab/CCDC	0	-	-	-	-	-	-	-	-	-	-	-	-	14	14	0	1	0	0	4	0	0	0	0	0	0	0	
China, Gansu	Prov. Lab/CCDC	0	-	-	-	-	-	-	-	-	-	-	-	-	0	-	-	-	-	-	-	-	-	-	-	-	-	-	
China, Guangdong	Prov. Lab/CCDC	0	-	-	-	-	-	-	-	-	-	-	-	-	48	48	0	21	0	0	22	0	0	15	0	0	0	0	
China, Guangxi	Prov. Lab/CCDC	0	-	-	-	-	-	-	-	-	-	-	-	-	0	-	-	-	-	-	-	-	-	-	-	-	-	-	
China, Hebei	Prov. Lab/CCDC	0	-	-	-	-	-	-	-	-	-	-	-	-	0	-	-	-	-	-	-	-	-	-	-	-	-	-	
China, Heilongjiang	Prov. Lab/CCDC	0	-	-	-	-	-	-	-	-	-	-	-	-	18	18	0	11	0	0	37	1	0	47	0	0	0	0	
China, Henan	Prov. Lab/CCDC	0	-	-	-	-	-	-	-	-	-	-	-	-	0	-	-	-	-	-	-	-	-	-	-	-	-	-	
China, Hunan	Prov. Lab/CCDC	0	-	-	-	-	-	-	-	-	-	-	-	-	0	-	-	-	-	-	-	-	-	-	-	-	-	-	
China, Jiangsu	Prov. Lab/CCDC	0	-	-	-	-	-	-	-	-	-	-	-	-	0	-	-	-	-	-	-	-	-	-	-	-	-	-	
China, Jiangxi	Prov. Lab/CCDC	0	-	-	-	-	-	-	-	-	-	-	-	-	0	-	-	-	-	-	-	-	-	-	-	-	-	-	
China, Jilin	Prov. Lab/CCDC	0	-	-	-	-	-	-	-	-	-	-	-	-	0	-	-	-	-	-	-	-	-	-	-	-	-	-	
China, Shaanxi	Prov. Lab/CCDC	0	-	-	-	-	-	-	-	-	-	-	-	-	0	-	-	-	-	-	-	-	-	-	-	-	-	-	
China, Shandong	Prov. Lab/CCDC	0	-	-	-	-	-	-	-	-	-	-	-	-	48	48	0	13	0	0	16	0	0	23	0	0	0	0	
China, Shanghai	Prov. Lab/CCDC	0	-	-	-	-	-	-	-	-	-	-	-	-	12	12	0	6	0	0	12	0	0	10	0	0	0	0	
China, Shanxi	Prov. Lab/CCDC	0	-	-	-	-	-	-	-	-	-	-	-	-	0	-	-	-	-	-	-	-	-	-	-	-	-	-	
China, Sichuan	Prov. Lab/CCDC	0	-	-	-	-	-	-	-	-	-	-	-	-	0	-	-	-	-	-	-	-	-	-	-	-	-	-	
China, Tianjin	Prov. Lab/CCDC	0	-	-	-	-	-	-	-	-	-	-	-	-	0	-	-	-	-	-	-	-	-	-	-	-	-	-	
China, Xinjiang	Prov. Lab/CCDC	0	-	-	-	-	-	-	-	-	-	-	-	-	27	27	0	27	0	0	38	1	0	20	0	0	0	0	
China, Yunnan	Prov. Lab/CCDC	1	1	0	1	0	0	0	0	0	0	0	0	0	-	-	-	-	-	-	-	-	-	-	-	-	-	-	
China, Zhejiang	Prov. Lab/CCDC	0	-	-	-	-	-	-	-	-	-	-	-	-	0	-	-	-	-	-	-	-	-	-	-	-	-	-	
China, Chongqing	CCDC	0	-	-	-	-	-	-	-	-	-	-	-	-	0	-	-	-	-	-	-	-	-	-	-	-	-	-	
China, Guizhou	CCDC	0	-	-	-	-	-	-	-	-	-	-	-	-	0	-	-	-	-	-	-	-	-	-	-	-	-	-	
China, Hainan	CCDC	0	-	-	-	-	-	-	-	-	-	-	-	-	0	-	-	-	-	-	-	-	-	-	-	-	-	-	
China, Hubei	CCDC	0	-	-	-	-	-	-	-	-	-	-	-	-	0	-	-	-	-	-	-	-	-	-	-	-	-	-	
China, Liaoning	CCDC	0	-	-	-	-	-	-	-	-	-	-	-	-	0	-	-	-	-	-	-	-	-	-	-	-	-	-	
China, Neimongol	CCDC	0	-	-	-	-	-	-	-	-	-	-	-	-	0	-	-	-	-	-	-	-	-	-	-	-	-	-	
China, Ningxia	CCDC	0	-	-	-	-	-	-	-	-	-	-	-	-	0	-	-	-	-	-	-	-	-	-	-	-	-	-	
China, Qinghai	CCDC	2	2	0	2	0	0	0	0	0	1	0	0	0	-	-	-	-	-	-	-	-	-	-	-	-	-	-	
China, Tibet	CCDC	0	-	-	-	-	-	-	-	-	-	-	-	-	0	-	-	-	-	-	-	-	-	-	-	-	-	-	
China, Hong Kong SAR	PHLC	0	-	-	-	-	-	-	-	-	-	-	-	-	0	-	-	-	-	-	-	-	-	-	-	-	-	-	
China, Macao SAR	PHLC	0	-	-	-	-	-	-	-	-	-	-	-	-	0	-	-	-	-	-	-	-	-	-	-	-	-	-	
Japan	NIID	0	-	-	-	-	-	-	-	-	-	-	-	-	0	-	-	-	-	-	-	-	-	-	-	-	-	-	
Lao People's Democratic Republic	NIID	0	-	-	-	-	-	-	-	-	-	-	-	-	0	-	-	-	-	-	-	-	-	-	-	-	-	-	
Malaysia	IMR	0	-	-	-	-	-	-	-	-	-	-	-	-	21	7	0	1	0	0	1	0	0	5	0	7	0	0	
Mongolia	NIID	203	0	0	0	0	0	0	0	0	0	0	23	0	0	-	-	-	-	-	-	-	-	-	-	-	-	-	
New Zealand	IESR	0	-	-	-	-	-	-	-	-	-	-	-	-	0	-	-	-	-	-	-	-	-	-	-	-	-	-	
Papua New Guinea	VIDRL	0	-	-	-	-	-	-	-	-	-	-	-	-	0	-	-	-	-	-	-	-	-	-	-	-	-	-	
Philippines	RITM	3	3	0	1	0	0	1	0	0	1	0	0	0	-	-	-	-	-	-	-	-	-	-	-	-	-	-	
Republic of Korea	NIH	0	-	-	-	-	-	-	-	-	-	-	-	-	0	-	-	-	-	-	-	-	-	-	-	-	-	-	
Singapore	SGH	0	-	-	-	-	-	-	-	-	-	-	-	-	0	-	-	-	-	-	-	-	-	-	-	-	-	-	
Viet Nam (North)	NIHE	0	-	-	-	-	-	-	-	-	-	-	-	-	0	-	-	-	-	-	-	-	-	-	-	-	-	-	
Viet Nam (South)	PI	0	-	-	-	-	-	-	-	-	-	-	-	-	0	-	-	-	-	-	-	-	-	-	-	-	-	-	
Pacific island countries and areas	VIDRL	0	-	-	-	-	-	-	-	-	-	-	-	-	0	-	-	-	-	-	-	-	-	-	-	-	-	-	
Total		305	6	0	4	0	0	1	0	0	2	0	23	0	0	191	174	0	80	0	0	130	2	0	120	0	10	0	0

1. Based on year of collection of sample, if available. Otherwise, based on year of receipt at reference laboratory.

2. CCDC (Chinese Center for Disease Control and Prevention, China); IESR (Institute of Environmental Science and Research, New Zealand); IMR (Institute of Medical Research, Malaysia); NIH (National Institute of Health, Republic of Korea); NIHE (National Institute of Hygiene and Epidemiology, Ha Noi, Viet Nam); NIID (National Institute of Infectious Diseases, Japan); PHI (Public Health Institute, Mongolia); PHLC (Public Health Laboratory Center, China, Hong Kong SAR); PI (Pasteur Institute, Ho Chi Minh, Viet Nam); RITM (Research Institute for Tropical Medicine, Philippines); SGH (Singapore General Hospital); VIDRL (Victorian Infectious Diseases Reference Laboratory, Australia)

Table 3B. Laboratory confirmation of polio isolates from other sources in 2015 ¹

Country	Intratype differentiation lab ²	Non-AFP cases											Environmental samples																
		Total number of non-AFP cases tested for polio	Total number of non-AFP cases with polio isolates	Type 1			Type 2			Type 3			NPEV	Pending ITD	Discordant pending sequencing	Total number of samples processed	Total number of samples with polio isolates	Type 1			Type 2			Type 3			NPEV	Pending ITD	Discordant pending sequencing
				Wild	Sabin	VDPV	Wild	Sabin	VDPV	Wild	Sabin	VDPV						Wild	Sabin	VDPV	Wild	Sabin	VDPV	Wild	Sabin	VDPV			
Australia	VIDRL	64	0	-	-	-	-	-	-	-	-	1	0	0	24	2	0	0	0	0	1	0	0	1	0	19	0	0	
Brunei Darussalam	VIDRL	0	-	-	-	-	-	-	-	-	-	-	-	-	0	-	-	-	-	-	-	-	-	-	-	-	-	-	
Cambodia	NIID	0	-	-	-	-	-	-	-	-	-	-	-	-	0	-	-	-	-	-	-	-	-	-	-	-	-	-	
China		0	-	-	-	-	-	-	-	-	-	-	-	-	0	-	-	-	-	-	-	-	-	-	-	-	-	-	
China, Anhui	Prov. Lab/CCDC	0	-	-	-	-	-	-	-	-	-	-	-	-	0	-	-	-	-	-	-	-	-	-	-	-	-	-	
China, Beijing	Prov. Lab/CCDC	0	-	-	-	-	-	-	-	-	-	-	-	-	0	-	-	-	-	-	-	-	-	-	-	-	-	-	
China, Fujian	Prov. Lab/CCDC	0	-	-	-	-	-	-	-	-	-	-	-	-	0	-	-	-	-	-	-	-	-	-	-	-	-	-	
China, Gansu	Prov. Lab/CCDC	0	-	-	-	-	-	-	-	-	-	-	-	-	0	-	-	-	-	-	-	-	-	-	-	-	-	-	
China, Guangdong	Prov. Lab/CCDC	0	-	-	-	-	-	-	-	-	-	-	-	-	0	-	-	-	-	-	-	-	-	-	-	-	-	-	
China, Guangxi	Prov. Lab/CCDC	0	-	-	-	-	-	-	-	-	-	-	-	-	0	-	-	-	-	-	-	-	-	-	-	-	-	-	
China, Hebei	Prov. Lab/CCDC	0	-	-	-	-	-	-	-	-	-	-	-	-	0	-	-	-	-	-	-	-	-	-	-	-	-	-	
China, Heilongjiang	Prov. Lab/CCDC	0	-	-	-	-	-	-	-	-	-	-	-	-	0	-	-	-	-	-	-	-	-	-	-	-	-	-	
China, Henan	Prov. Lab/CCDC	0	-	-	-	-	-	-	-	-	-	-	-	-	0	-	-	-	-	-	-	-	-	-	-	-	-	-	
China, Hunan	Prov. Lab/CCDC	0	-	-	-	-	-	-	-	-	-	-	-	-	0	-	-	-	-	-	-	-	-	-	-	-	-	-	
China, Jiangsu	Prov. Lab/CCDC	0	-	-	-	-	-	-	-	-	-	-	-	-	0	-	-	-	-	-	-	-	-	-	-	-	-	-	
China, Jiangxi	Prov. Lab/CCDC	0	-	-	-	-	-	-	-	-	-	-	-	-	0	-	-	-	-	-	-	-	-	-	-	-	-	-	
China, Jilin	Prov. Lab/CCDC	0	-	-	-	-	-	-	-	-	-	-	-	-	0	-	-	-	-	-	-	-	-	-	-	-	-	-	
China, Shaanxi	Prov. Lab/CCDC	0	-	-	-	-	-	-	-	-	-	-	-	-	0	-	-	-	-	-	-	-	-	-	-	-	-	-	
China, Shandong	Prov. Lab/CCDC	0	-	-	-	-	-	-	-	-	-	-	-	-	0	-	-	-	-	-	-	-	-	-	-	-	-	-	
China, Shanghai	Prov. Lab/CCDC	0	-	-	-	-	-	-	-	-	-	-	-	-	0	-	-	-	-	-	-	-	-	-	-	-	-	-	
China, Shanxi	Prov. Lab/CCDC	0	-	-	-	-	-	-	-	-	-	-	-	-	0	-	-	-	-	-	-	-	-	-	-	-	-	-	
China, Sichuan	Prov. Lab/CCDC	0	-	-	-	-	-	-	-	-	-	-	-	-	0	-	-	-	-	-	-	-	-	-	-	-	-	-	
China, Tianjin	Prov. Lab/CCDC	0	-	-	-	-	-	-	-	-	-	-	-	-	0	-	-	-	-	-	-	-	-	-	-	-	-	-	
China, Xinjiang	Prov. Lab/CCDC	0	-	-	-	-	-	-	-	-	-	-	-	-	0	-	-	-	-	-	-	-	-	-	-	-	-	-	
China, Yunnan	Prov. Lab/CCDC	0	-	-	-	-	-	-	-	-	-	-	-	-	0	-	-	-	-	-	-	-	-	-	-	-	-	-	
China, Zhejiang	Prov. Lab/CCDC	0	-	-	-	-	-	-	-	-	-	-	-	-	0	-	-	-	-	-	-	-	-	-	-	-	-	-	
China, Chongqing	CCDC	0	-	-	-	-	-	-	-	-	-	-	-	-	0	-	-	-	-	-	-	-	-	-	-	-	-	-	
China, Guizhou	CCDC	0	-	-	-	-	-	-	-	-	-	-	-	-	0	-	-	-	-	-	-	-	-	-	-	-	-	-	
China, Hainan	CCDC	0	-	-	-	-	-	-	-	-	-	-	-	-	0	-	-	-	-	-	-	-	-	-	-	-	-	-	
China, Hubei	CCDC	0	-	-	-	-	-	-	-	-	-	-	-	-	0	-	-	-	-	-	-	-	-	-	-	-	-	-	
China, Liaoning	CCDC	0	-	-	-	-	-	-	-	-	-	-	-	-	0	-	-	-	-	-	-	-	-	-	-	-	-	-	
China, Neimongol	CCDC	0	-	-	-	-	-	-	-	-	-	-	-	-	0	-	-	-	-	-	-	-	-	-	-	-	-	-	
China, Ningxia	CCDC	0	-	-	-	-	-	-	-	-	-	-	-	-	0	-	-	-	-	-	-	-	-	-	-	-	-	-	
China, Qinghai	CCDC	0	-	-	-	-	-	-	-	-	-	-	-	-	0	-	-	-	-	-	-	-	-	-	-	-	-	-	
China, Tibet	CCDC	0	-	-	-	-	-	-	-	-	-	-	-	-	0	-	-	-	-	-	-	-	-	-	-	-	-	-	
China, Hong Kong SAR	PHLC	0	-	-	-	-	-	-	-	-	-	-	-	-	0	-	-	-	-	-	-	-	-	-	-	-	-	-	
China, Macao SAR	PHLC	0	-	-	-	-	-	-	-	-	-	-	-	-	0	-	-	-	-	-	-	-	-	-	-	-	-	-	
Japan	NIID	0	-	-	-	-	-	-	-	-	-	-	-	-	0	-	-	-	-	-	-	-	-	-	-	-	-	-	
Lao People's Democratic Republic	NIID	0	-	-	-	-	-	-	-	-	-	-	-	-	0	-	-	-	-	-	-	-	-	-	-	-	-	-	
Malaysia	IMR	0	-	-	-	-	-	-	-	-	-	-	-	-	0	-	-	-	-	-	-	-	-	-	-	-	-	-	
Mongolia	NIID	54	0	0	0	0	0	0	0	0	0	6	0	0	0	-	-	-	-	-	-	-	-	-	-	-	-	-	
New Zealand	IESR	0	-	-	-	-	-	-	-	-	-	-	-	-	0	-	-	-	-	-	-	-	-	-	-	-	-	-	
Papua New Guinea	VIDRL	0	-	-	-	-	-	-	-	-	-	-	-	-	0	-	-	-	-	-	-	-	-	-	-	-	-	-	
Philippines	RITM	3	3	0	1	0	0	1	0	0	1	0	0	0	0	-	-	-	-	-	-	-	-	-	-	-	-	-	
Republic of Korea	NIH	0	-	-	-	-	-	-	-	-	-	-	-	-	0	-	-	-	-	-	-	-	-	-	-	-	-	-	
Singapore	SGH	0	-	-	-	-	-	-	-	-	-	-	-	-	0	-	-	-	-	-	-	-	-	-	-	-	-	-	
Viet Nam (North)	NIHE	0	-	-	-	-	-	-	-	-	-	-	-	-	0	-	-	-	-	-	-	-	-	-	-	-	-	-	
Viet Nam (South)	PI	0	-	-	-	-	-	-	-	-	-	-	-	-	0	-	-	-	-	-	-	-	-	-	-	-	-	-	
Pacific island countries and areas	VIDRL	0	-	-	-	-	-	-	-	-	-	-	-	-	0	-	-	-	-	-	-	-	-	-	-	-	-	-	
Total		121	3	0	1	0	0	1	0	0	1	0	7	0	0	24	2	0	0	0	0	1	0	0	1	0	19	0	0

1. Based on year of collection of sample, if available. Otherwise, based on year of receipt at reference laboratory.

2. CCDC (Chinese Center for Disease Control and Prevention, China); IESR (Institute of Environmental Science and Research, New Zealand); IMR (Institute of Medical Research, Malaysia); NIH (National Institute of Health, Republic of Korea); NIHE (National Institute of Hygiene and Epidemiology, Ha Noi, Viet Nam); NIID (National Institute of Infectious Diseases, Japan); PHI (Public Health Institute, Mongolia); PHLC (Public Health Laboratory Center, China, Hong Kong SAR); PI (Pasteur Institute, Ho Chi Minh, Viet Nam); RITM (Research Institute for Tropical Medicine, Philippines); SGH (Singapore General Hospital); VIDRL (Victorian Infectious Diseases Reference Laboratory, Australia)

Table 4. Vaccine-derived poliovirus, 2000–2015

Country	2000–2009 ²	2010	2011	2012	2013	2014	2015
Cambodia	2006 (1 case) Total (2 cases)						
China	2009 (1 case) Total (27 cases)	aVDPV2 (5 cases) aVDPV3 (2 cases)	aVDPV1 (1 case) aVDPV2 (3 cases) cVDPV2 (2 cases) iVDPV2 (2 cases) iVDPV3 (1 case)	aVDPV1 (1 case) aVDPV2 (2 cases) cVDPV2 (3 cases) iVDPV2 + iVDPV3 (1 case)	aVDPV2 (1 case) iVDPV2 + iVDPV3 (1 case)	aVDPV1 (1 case) aVDPV2 (2 cases) iVDPV3 (1 case)	iVDPV2 (1 case) ?VDPV1 (1 case) ?VDPV2 (1 case)
China, Hong Kong SAR	2005 (3 cases)						
Japan	2005 (1 case) Total (2 cases)						
Lao People's Democratic Republic	2004 (3 cases)						
Mongolia	2003 (1 case)						
Philippines	2001 (3 cases)					aVDPV2 (1 case)	
Viet Nam				aVDPV2 (2 cases)			

1. Prefix letter refers to the VDPV category - "cVDPV" = circulating VDPV, "iVDPV" = immunodeficiency-associated VDPV, "aVDPV" = ambiguous VDPV, "?VDPV" = unknown. Suffix number refers to the poliovirus serotype (types 1, 2 or 3).

2. Refers to year of last VDPV case, and aggregate total of VDPV cases for 2000-2009