

HIGHLIGHTS

Statement on the 6th IHR Emergency Committee meeting regarding the international spread of wild poliovirus

The sixth meeting of the Emergency Committee under the International Health Regulations (2005) (IHR) regarding the international spread of wild poliovirus was convened by the Director-General on 4 August 2015.

The Committee noted that since the declaration that the international spread of polio constituted a Public Health Emergency of International Concern (PHEIC), strong progress has been made by countries toward interruption of wild poliovirus transmission, implementation of Temporary Recommendations issued by the Director-General, and the overall decline in occurrence of international spread of wild poliovirus.

The Committee acknowledged the strong efforts of countries in Africa to eradicate polio noting that no cases of wild poliovirus have been reported in Africa for nearly twelve months. At the same time the international spread of wild poliovirus has continued, with two new documented exportations from Afghanistan into Pakistan in 2015.

The Committee was concerned that the Temporary Recommendations for international travelers of all ages are not being implemented fully in Afghanistan – particularly at airports. However, several countries are now requiring proof of polio vaccination from Pakistan and Afghanistan at points of entry.

The Committee unanimously agreed that the international spread of polio remains a PHEIC and recommended the extension of the Temporary Recommendations, as revised, for a further three months.

Based on the advice concerning wild poliovirus, the reports made by Afghanistan and Pakistan and the currently available information, the Director-General accepted the Committee's assessment and on 10 August 2015 determined that the events relating to wild poliovirus continue to constitute a PHEIC. With regard to the concerns about ongoing circulating vaccine-derived poliovirus, the Director-General emphasized the critical importance of interrupting all poliovirus transmission, including outbreaks of vaccine-derived poliovirus for successful completion of polio eradication.

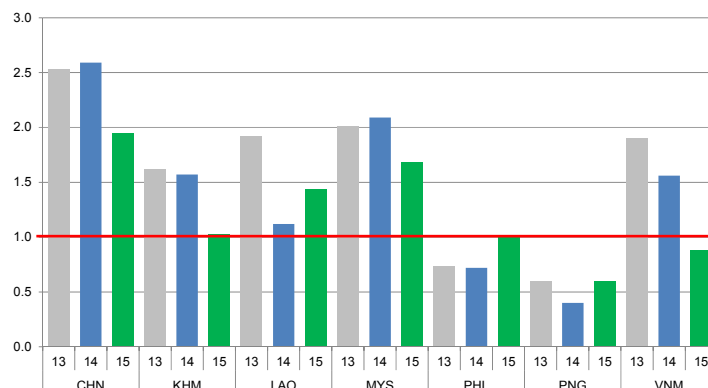
For more information please visit WHO website at the following link:

<http://www.who.int/mediacentre/news/statements/2015/ihr-polio-17-august-2015>

CONTACT US

Expanded Programme on Immunization
Regional Office for the Western Pacific
World Health Organization
P.O. Box 2932, 1000 Manila, Philippines
Phone: +63 2 5288001
Fax: +63 2 5211036, 5260279
Email: WPR_EPIdata@wpro.who.int
Web: www.wpro.who.int/immunization

Chart 1. Non-polio AFP rate (per 100 000 persons < 15 years of age), 2013–2015*



* AFP rate annualized as of week 33

Chart 2. Adequate specimen collection rate, 2013–2015

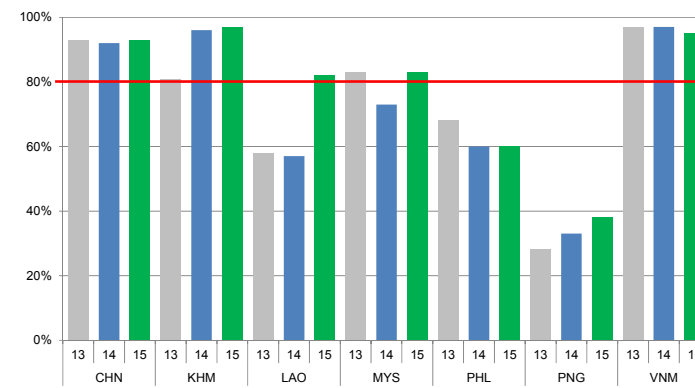


Chart 3. Percentage of reported AFP cases by number of polio vaccination doses, 2015

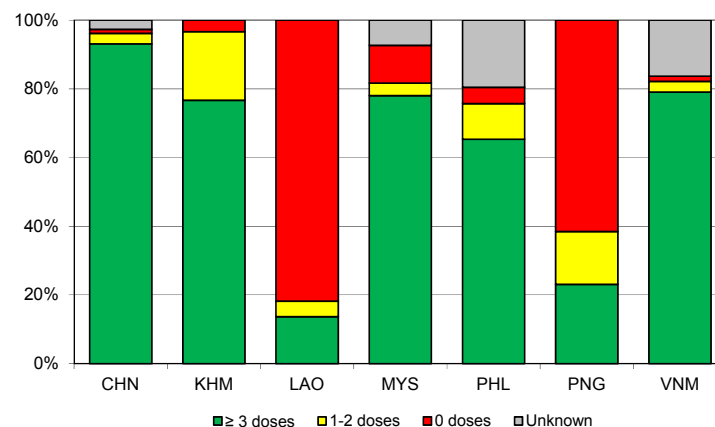
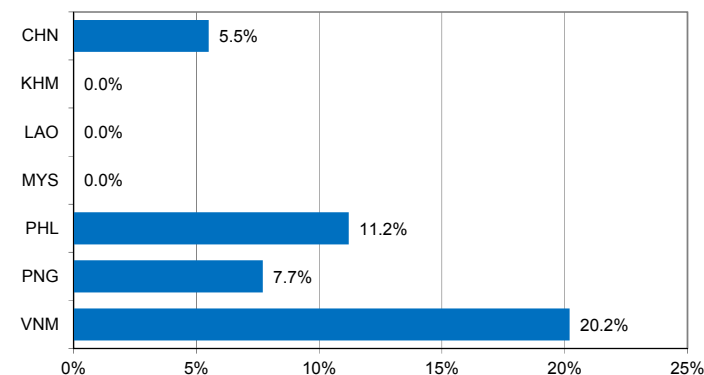


Chart 4. Percentage of reported AFP cases with pending classification > 90 days after onset, 2015



Note: Priority countries were selected for the charts. Official WHO acronyms have been used for abbreviation: CHN (China), KHM (Cambodia), LAO (Lao People's Democratic Republic), MYS (Malaysia), PHL (Philippines), PNG (Papua New Guinea), and VNM (Viet Nam).

Table 1A. Classification of AFP cases with onset in 2014 and key surveillance indicators

Country/area	2013	2014												
	Total reported cases	Annual expected cases <15 years of age	Total reported cases	Classification						Indicators			Latest report date ⁴	Days since last report ⁵
				Confirmed wild poliovirus	Vaccine-derived poliovirus (VDPV)	Polio-compatible	Discarded (Non-polio)	Pending		Non-polio AFP rate	% with adequate specimens ²	% investigated ≤ 2 days of notification ³		
								Total	> 90 days ¹ # (%)					≥ 1
Australia	62	44	60	0	0	2	58	0	0 (0.0%)	1.36	50%	83%	07-Apr-15	-
Brunei Darussalam	1	1	4	0	0	0	4	0	0 (0.0%)	4.00	75%	100%	07-Apr-15	-
Cambodia	73	46	72	0	0	0	72	0	0 (0.0%)	1.57	96%	93%	14-May-15	-
China	5623	2225	5758	0	2	0	5756	0	0 (0.0%)	2.59	92%	100%	13-May-15	-
China, Hong Kong SAR	12	8	19	0	0	0	19	0	0 (0.0%)	2.38	89%	100%	05-Mar-15	-
China, Macao SAR	1	1	1	0	0	0	1	0	0 (0.0%)	1.00	0%	100%	13-Jan-15	-
Japan	-	167	-	-	-	-	-	-	-	-	-	-	-	-
Lao People's Democratic Republic	48	25	28	0	0	0	28	0	0 (0.0%)	1.12	57%	93%	27-Apr-15	-
Malaysia	155	77	161	0	0	0	161	0	0 (0.0%)	2.09	73%	87%	10-Mar-15	-
Mongolia	7	8	9	0	0	0	9	0	0 (0.0%)	1.13	89%	100%	05-Mar-15	-
New Zealand	12	9	8	0	0	0	8	0	0 (0.0%)	0.89	38%	100%	11-Mar-15	-
Papua New Guinea	18	30	12	0	0	0	12	0	0 (0.0%)	0.40	33%	75%	07-Apr-15	-
Philippines	277	378	272	0	1	0	271	0	0 (0.0%)	0.72	60%	97%	26-Jun-15	-
Republic of Korea	84	72	88	0	0	0	88	0	0 (0.0%)	1.22	86%	98%	16-Feb-15	-
Singapore	7	6	8	0	0	0	8	0	0 (0.0%)	1.33	75%	88%	07-Jan-15	-
Viet Nam	459	231	361	0	0	0	361	0	0 (0.0%)	1.56	97%	93%	14-Apr-15	-
Pacific island countries and areas	8	10	15	0	0	0	10	5	5 (33.3%)	1.50	67%	93%	30-Jun-15	48
Total	6847	3338	6876	0	3	2	6866	5	5 (0.1%)	2.06	90%	99%		

1. Number (%) of reported cases pending classification more than 90 days from date of onset of paralysis to date of last report

2. Percentage of reported cases with two stool specimens collected 24 hours apart and within 14 days of onset of paralysis

3. Percentage of reported cases investigated within two days of notification

4. Report date is fixed as soon as all cases for the year have been classified

5. Countries are expected to submit data at least once per month to WPRO

Green	Reached or surpassed target
Yellow	Nearly reached target: 0.5–0.99 for non-polio AFP rate; 60–79% for other indicators
Red	Substantially below target

Table 1B. Classification of AFP cases with onset in 2015 and key surveillance indicators

Country/area	2014		2015											
	Total reported cases	Annual expected cases <15 years of age	Total reported cases	Classification						Indicators			Latest report date	Days since last report ⁵
				Confirmed wild poliovirus	Vaccine-derived poliovirus (VDPV)	Polio-compatible	Discarded (Non-polio)	Pending		Non-polio AFP rate ²	% with adequate specimens ³	% investigated ≤ 2 days of notification ⁴		
								Total	> 90 days ¹ # (%)					
≥ 1	≥ 80%	≥ 80%	≤ 30											
Australia	60	44	27	0	0	0	23	4	2 (7.4%)	0.97	22%	100%	14-Aug-15	3
Brunei Darussalam	4	1	2	0	0	0	2	0	0 (0.0%)	3.15	100%	100%	13-Jul-15	35
Cambodia	72	46	30	0	0	0	21	9	0 (0.0%)	1.03	97%	100%	04-Aug-15	13
China	5758	2234	2760	0	0	0	1906	854	152 (5.5%)	1.95	93%	100%	12-Aug-15	5
China, Hong Kong SAR	19	8	8	0	0	0	8	0	0 (0.0%)	1.58	88%	100%	05-Aug-15	12
China, Macao SAR	1	1	1	0	0	0	1	0	0 (0.0%)	1.58	100%	100%	15-Jul-15	33
Japan	-	163	-	-	-	-	-	-	-	-	-	-	-	-
Lao People's Democratic Republic	28	24	22	0	0	0	19	3	0 (0.0%)	1.44	82%	95%	10-Aug-15	7
Malaysia	161	77	82	0	0	0	72	10	0 (0.0%)	1.68	83%	74%	14-Aug-15	3
Mongolia	9	9	6	0	0	0	5	1	0 (0.0%)	1.05	100%	100%	04-Aug-15	13
New Zealand	8	9	3	0	0	0	0	3	1 (33.3%)	0.53	33%	100%	30-Jun-15	48
Papua New Guinea	12	34	13	0	0	0	11	2	1 (7.7%)	0.60	38%	77%	06-Aug-15	11
Philippines	272	387	251	0	0	0	174	77	28 (11.2%)	1.02	60%	97%	14-Aug-15	3
Republic of Korea	88	70	41	0	0	0	35	6	0 (0.0%)	0.92	83%	100%	15-Jul-15	33
Singapore	8	6	6	0	0	0	5	1	0 (0.0%)	1.58	100%	83%	05-Aug-15	12
Viet Nam	361	231	129	0	0	0	39	90	26 (20.2%)	0.88	95%	97%	29-Jun-15	49
Pacific island countries and areas	15	10	1	0	0	0	1	0	0 (0.0%)	0.16	100%	100%	03-Aug-15	14
Total	6876	3354	3382	0	0	0	2322	1060	210 (6.2%)	1.59	90%	99%		

1. Number (%) of reported cases pending classification more than 90 days from date of onset of paralysis to date of last report
2. Annualized non-polio AFP rate per 100 000 population under 15 years of age
3. Percentage of reported cases with two stool specimens collected 24 hours apart and within 14 days of onset of paralysis
4. Percentage of reported cases investigated within two days of notification
5. Countries are expected to submit data at least once per month to WPRO

Green	Reached or surpassed target
Yellow	Nearly reached target: 0.5–0.99 for no n-polio AFP rate; 60–79% for other indicators
Red	Substantially below target

Table 2A. Laboratory investigation of AFP cases with onset in 2014 and key laboratory indicators

Country/area	Polio laboratory	Total no. of AFP cases with specimens	Virus isolation results							% specimens positive for NPEV	Latest report date	Intratyptic differentiation/ Sequencing laboratory ¹	No. of isolates received	Intratyptic differentiation (ITD)/sequencing results									NPEV ²	Pending ITD	Discordant pending sequencing	% ITD results reported ≤ 7 days of receipt				
			L20B positive	L20B positive + NPEV	NPEV only	Negative	Pending ≤ 14 days	Pending > 14 days	% results reported ≤ 14 days					Type 1			Type 2			Type 3										
														Wild	Sabin	VDPV	Wild	Sabin	VDPV	Wild	Sabin	VDPV								
Australia	VIDRL	48	0	0	3	45	0	0	97%	3%	14-Aug-15	VIDRL	0	-	-	-	-	-	-	-	-	-	-	-	-	-	-	-	-	
Brunei Darussalam	VIDRL	2	0	0	0	2	0	0	50%	0%	22-Jan-15	VIDRL	0	-	-	-	-	-	-	-	-	-	-	-	-	-	-	-	-	
Cambodia	NIID	73	5	0	12	56	0	0	96%	14%	02-Feb-15	NIID	10	0	0	0	0	10	0	0	0	0	0	0	0	0	0	0	0	100%
China (total)		5694	112	1	588	4993	0	0	75%	9%	13-May-15		307	0	72	0	0	106	4	0	116	2	7	0	0	0	0	0	95%	
China, Anhui	Prov. Lab	334	20	0	26	288	0	0	83%	7%		Prov. Lab/CCDC	45	0	10	0	0	14	0	0	21	0	0	0	0	0	0	0	91%	
China, Beijing	Prov. Lab	41	1	0	0	40	0	0	82%	0%		Prov. Lab/CCDC	11	0	3	0	0	1	0	0	7	0	0	0	0	0	0	0	100%	
China, Fujian	Prov. Lab	213	2	0	27	184	0	0	92%	10%		Prov. Lab/CCDC	3	0	0	0	0	0	0	0	3	0	0	0	0	0	0	0	100%	
China, Gansu	Prov. Lab	121	0	0	8	113	0	0	79%	5%		Prov. Lab/CCDC	6	0	2	0	0	2	0	0	2	0	0	0	0	0	0	0	100%	
China, Guangdong	Prov. Lab	354	4	0	47	303	0	0	81%	11%		Prov. Lab/CCDC	9	0	4	0	0	3	0	0	2	0	0	0	0	0	0	0	78%	
China, Guangxi	Prov. Lab	278	6	0	57	215	0	0	64%	17%		Prov. Lab/CCDC	12	0	0	0	0	7	0	0	5	0	0	0	0	0	0	0	100%	
China, Hebei	Prov. Lab	332	11	1	37	283	0	0	69%	8%		Prov. Lab/CCDC	11	0	2	0	0	6	2	0	1	0	0	0	0	0	0	0	100%	
China, Heilongjiang	Prov. Lab	150	2	0	7	141	0	0	89%	4%		Prov. Lab/CCDC	6	0	0	0	0	2	0	0	3	0	1	0	0	0	0	0	100%	
China, Henan	Prov. Lab	535	4	0	61	470	0	0	80%	9%		Prov. Lab/CCDC	6	0	1	0	0	2	0	0	3	0	0	0	0	0	0	0	75%	
China, Hunan	Prov. Lab	267	4	0	37	226	0	0	90%	13%		Prov. Lab/CCDC	4	0	2	0	0	2	0	0	0	0	0	0	0	0	0	0	100%	
China, Jiangsu	Prov. Lab	319	18	0	3	298	0	0	79%	1%		Prov. Lab/CCDC	44	0	7	0	0	15	0	0	20	2	0	0	0	0	0	97%		
China, Jiangxi	Prov. Lab	190	2	0	27	161	0	0	92%	13%		Prov. Lab/CCDC	4	0	1	0	0	0	0	0	1	0	2	0	0	0	0	0	100%	
China, Jilin	Prov. Lab	54	1	0	7	46	0	0	66%	11%		Prov. Lab/CCDC	4	0	1	0	0	1	0	0	2	0	0	0	0	0	0	0	100%	
China, Shaanxi	Prov. Lab	95	1	0	2	92	0	0	89%	2%		Prov. Lab/CCDC	2	0	0	0	0	2	0	0	0	0	0	0	0	0	0	0	100%	
China, Shandong	Prov. Lab	397	5	0	39	353	0	0	83%	7%		Prov. Lab/CCDC	8	0	3	0	0	3	0	0	2	0	0	0	0	0	0	0	100%	
China, Shanghai	Prov. Lab	29	2	0	0	27	0	0	98%	0%		Prov. Lab/CCDC	6	0	0	0	0	2	0	0	4	0	0	0	0	0	0	0	100%	
China, Shanxi	Prov. Lab	205	4	0	2	199	0	0	55%	1%		Prov. Lab/CCDC	12	0	2	0	0	6	2	0	2	0	0	0	0	0	0	0	90%	
China, Sichuan	Prov. Lab	411	4	0	42	365	0	0	42%	9%		Prov. Lab/CCDC	10	0	4	0	0	4	0	0	2	0	0	0	0	0	0	0	100%	
China, Tianjin	Prov. Lab	27	0	0	3	24	0	0	93%	9%		Prov. Lab/CCDC	10	0	2	0	0	4	0	0	4	0	0	0	0	0	0	0	100%	
China, Xinjiang	Prov. Lab	98	1	0	5	92	0	0	96%	4%		Prov. Lab/CCDC	6	0	4	0	0	2	0	0	0	0	0	0	0	0	0	0	100%	
China, Yunnan	Prov. Lab	267	11	0	39	217	0	0	51%	11%		Prov. Lab/CCDC	24	0	7	0	0	7	0	0	10	0	0	0	0	0	0	0	93%	
China, Zhejiang	Prov. Lab	189	2	0	20	167	0	0	69%	8%		Prov. Lab/CCDC	8	0	0	0	0	2	0	0	4	0	2	0	0	0	0	0	100%	
China, Chongqing	Prov. Lab	73	0	0	14	59	0	0	71%	15%		CCDC	4	0	0	0	0	2	0	0	2	0	0	0	0	0	0	0	100%	
China, Guizhou	Prov. Lab	206	0	0	23	183	0	0	90%	10%		CCDC	13	0	0	0	0	7	0	0	6	0	0	0	0	0	0	0	82%	
China, Hainan	Prov. Lab	43	0	0	7	36	0	0	76%	14%		CCDC	0	-	-	-	-	-	-	-	-	-	-	-	-	-	-	-	-	
China, Hubei	Prov. Lab	186	2	0	23	161	0	0	60%	12%		CCDC	6	0	4	0	0	0	0	2	0	0	0	0	0	0	0	0	100%	
China, Liaoning	Prov. Lab	137	1	0	18	118	0	0	85%	11%		CCDC	19	0	9	0	0	4	0	0	4	0	2	0	0	0	0	0	100%	
China, Neimongol	Prov. Lab	88	2	0	3	83	0	0	64%	2%		CCDC	8	0	4	0	0	2	0	0	2	0	0	0	0	0	0	0	100%	
China, Ningxia	Prov. Lab	31	2	0	0	29	0	0	76%	0%		CCDC	6	0	0	0	0	4	0	0	2	0	0	0	0	0	0	0	100%	
China, Qinghai	Prov. Lab	21	0	0	4	17	0	0	93%	17%		CCDC	0	-	-	-	-	-	-	-	-	-	-	-	-	-	-	-	-	
China, Tibet	Prov. Lab	3	0	0	0	3	0	0	75%	0%		CCDC	0	-	-	-	-	-	-	-	-	-	-	-	-	-	-	-	-	
China, Hong Kong SAR	PHLC	19	0	0	4	15	0	0	93%	11%	13-Jan-15	PHLC	0	-	-	-	-	-	-	-	-	-	-	-	-	-	-	-	-	
China, Macao SAR	PHLC	0	-	-	-	-	-	-	-	-	13-Jan-15	PHLC	0	-	-	-	-	-	-	-	-	-	-	-	-	-	-	-	-	-
Japan	NIID	-	-	-	-	-	-	-	-	-		NIID	-	-	-	-	-	-	-	-	-	-	-	-	-	-	-	-	-	
Lao People's Democratic Republic	NIID	25	1	0	5	19	0	0	100%	18%	22-Jan-15	NIID	0	-	-	-	-	-	-	-	-	-	-	-	-	-	-	-	-	
Malaysia	IMR	164	0	0	4	160	0	0	100%	2%	10-Feb-15	IMR	0	-	-	-	-	-	-	-	-	-	-	-	-	-	-	-	-	
Mongolia	PHI	9	0	0	1	8	0	0	100%	11%	16-Mar-15	NIID	0	-	-	-	-	-	-	-	-	-	-	-	-	-	-	-	-	
New Zealand	IESR	5	0	0	1	4	0	0	91%	18%	12-Jan-15	IESR	0	-	-	-	-	-	-	-	-	-	-	-	-	-	-	-	-	
Papua New Guinea	VIDRL	10	0	1	4	5	0	0	100%	50%	22-Jan-15	VIDRL	4	0	0	0	0	0	0	0	2	0	2	0	0	0	0	0	100%	
Philippines	RITM	342	5	0	13	324	0	0	88%	3%	11-Mar-15	RITM	13	0	4	0	0	6	1	0	2	0	0	0	0	0	0	0	100%	
Republic of Korea	NIH	88	0	1	8	80	0	0	97%	10%	16-Feb-15	NIH	2	0	0	0	0	0	0	0	0	0	2	0	0	0	0	0	100%	
Singapore	SGH	8	0	0	0	8	0	0	100%	0%	14-Jan-15	SGH	0	-	-	-	-	-	-	-	-	-	-	-	-	-	-	-	-	
Viet Nam (North)	NIHE	216	0	0	30	186	0	0	100%	12%	11-Feb-15	NIHE	0	-	-	-	-	-	-	-	-	-	-	-	-	-	-	-	-	
Viet Nam (South)	PI	136	0	0	16	120	0	0	93%	11%	21-Jan-15	PI	0	-	-	-	-	-	-	-	-	-	-	-	-	-	-	-	-	
Pacific island countries and areas	VIDRL	12	0	0	1	11	0	0	100%	4%	22-Jan-15	VIDRL	0	-	-	-	-	-	-	-	-	-	-	-	-	-	-	-	-	
Total		6851	123	3	690	6036	0	0	78%	9%			336	0	76	0	0	122	5	0	120	2	11	0	0	0	0	96%		

1. CCDC (Chinese Center for Disease Control and Prevention, China); IESR (Institute of Environmental Science and Research, New Zealand); IMR (Institute of Medical Research, Malaysia); NIH (National Institute of Health, Republic of Korea); NIHE (National Institute of Hygiene and Epidemiology, Ha Noi, Viet Nam); NIID (National Institute of Infectious Diseases, Japan); PHI (Public Health Institute, Mongolia); PHLC (Public Health Laboratory Center, China, Hong Kong SAR); PI (Pasteur Institute, Ho Chi Minh, Viet Nam); RITM (Research Institute for Tropical Medicine, Philippines); SGH (Singapore General Hospital); VIDRL (Victorian Infectious Diseases Reference Laboratory, Australia)

2. NPEV growing in L20B cells

Table 3. Laboratory confirmation of polio isolates from environmental samples in 2014–2015 ¹

Country/area ²	Intratype differentiation laboratory ³	2014													2015																						
		Total number of samples processed	Total number of samples with polio isolates	Type 1			Type 2			Type 3			NPEV	Pending ITD	Discordant pending sequencing	Total number of samples processed	Total number of samples with polio isolates	Type 1			Type 2			Type 3			NPEV	Pending ITD	Discordant pending sequencing								
				Wild	Sabin	VDPV	Wild	Sabin	VDPV	Wild	Sabin	VDPV						Wild	Sabin	VDPV	Wild	Sabin	VDPV	Wild	Sabin	VDPV											
Australia	VIDRL	3	0	-	-	-	-	-	-	-	-	-	3	0	0	0	-	-	-	-	-	-	-	-	-	-	-	-	-	-	-	-	-	-	-	-	-
China (total)		167	167	0	79	0	0	129	2	0	115	0	0	0	0	-	-	-	-	-	-	-	-	-	-	-	-	-	-	-	-	-	-	-	-	-	
China, Fujian	Prov. Lab/CCDC	14	14	0	1	0	0	4	0	0	0	0	0	0	0	-	-	-	-	-	-	-	-	-	-	-	-	-	-	-	-	-	-	-	-	-	
China, Guangdong	Prov. Lab/CCDC	48	48	0	21	0	0	22	0	0	15	0	0	0	0	-	-	-	-	-	-	-	-	-	-	-	-	-	-	-	-	-	-	-	-	-	
China, Heilongjiang	Prov. Lab/CCDC	18	18	0	11	0	0	37	1	0	47	0	0	0	0	-	-	-	-	-	-	-	-	-	-	-	-	-	-	-	-	-	-	-	-	-	
China, Shandong	Prov. Lab/CCDC	48	48	0	13	0	0	16	0	0	23	0	0	0	0	-	-	-	-	-	-	-	-	-	-	-	-	-	-	-	-	-	-	-	-	-	
China, Shanghai	Prov. Lab/CCDC	12	12	0	6	0	0	12	0	0	10	0	0	0	0	-	-	-	-	-	-	-	-	-	-	-	-	-	-	-	-	-	-	-	-	-	
China, Xinjiang	Prov. Lab/CCDC	27	27	0	27	0	0	38	1	0	20	0	0	0	0	-	-	-	-	-	-	-	-	-	-	-	-	-	-	-	-	-	-	-	-	-	
Malaysia	IMR	21	7	0	1	0	0	1	0	0	5	0	7	0	0	-	-	-	-	-	-	-	-	-	-	-	-	-	-	-	-	-	-	-	-	-	
Total		191	174	0	80	0	0	130	2	0	120	0	10	0	0	-	-	-	-	-	-	-	-	-	-	-	-	-	-	-	-	-	-	-	-	-	

1. Based on year of collection of sample, if available. Otherwise, based on year of receipt at reference laboratory.
2. Only countries reporting laboratory results from environmental samples are included in the table.
3. CCDC (Chinese Center for Disease Control and Prevention, China); IMR (Institute of Medical Research, Malaysia); VIDRL (Victorian Infectious Diseases Reference Laboratory, Australia)

Table 4. Vaccine-derived poliovirus, 2000–2015

Country/area	2000–2009 ²	2010	2011	2012	2013	2014	2015
Cambodia	2006 (1 case) Total (2 cases)						
China	2009 (1 case) Total (27 cases)	aVDPV2 (5 cases) aVDPV3 (2 cases)	aVDPV1 (1 case) aVDPV2 (3 cases) cVDPV2 (2 cases) iVDPV2 (2 cases) iVDPV3 (1 case)	aVDPV1 (1 case) aVDPV2 (2 cases) cVDPV2 (3 cases) iVDPV2 + iMDPV3 (1 case)	aVDPV2 (1 case) iVDPV2 + iVDPV3 (1 case)	aVDPV1 (1 case) aVDPV2 (2 cases) iVDPV3 (1 case)	iVDPV2 (1 case) ?VDPV1 (1 case) ?VDPV2 (1 case)
China, Hong Kong SAR	2005 (3 cases)						
Japan	2005 (1 case) Total (2 cases)						
Lao People's Democratic Republic	2004 (3 cases)						
Mongolia	2003 (1 case)						
Philippines	2001 (3 cases)					aVDPV2 (1 case)	
Viet Nam				aVDPV2 (2 cases)			

1. Prefix letter refers to the VDPV category: "cVDPV" = circulating VDPV, "iVDPV" = immunodeficiency-associated VDPV, "aVDPV" = ambiguous VDPV, "?VDPV" = pending. Suffix number refers to the poliovirus serotype (types 1, 2 or 3).
2. Refers to year of last VDPV case, and aggregate total of VDPV cases for 2000-2009