

Poliomyelitis Surveillance - Report for Polio Week 52, ending December 30, 2007

(as of 27 Oct 2008)

Table 1: Classification of AFP cases with onset in 2007 and key surveillance indicators

	Reported AFP 2006	Expected AFP 2007	Reported AFP 2007	Classification				Indicators					Latest Report Date	
				Confirmed Polio	Polio-compatible	Non-polio (Discarded)	Pending	Non-polio AFP Rate/ 100,000 < 15 yrs	% with 2 Specimens w/n 14 Days of Onset	% Reported Within 14 Days of Onset	% With Follow-up	% Inadequate Stools With Follow-up		Pending Classification > 90 Days After Onset
Australia	44	40	28	0	1	27	0	0.70	50%	57%	36%*	21%	0	24-Oct-08
Brunei Darussalam	5	1	4	0	0	4	0	4.00	50%	75%	75%	50%	0	13-Mar-08
Cambodia	111	53	94	0	0	94	0	1.77	87%	89%	100%	100%	0	11-Mar-08
China	5,635	2,648	4,985	3**	1	4,981	0	1.88	91%	94%	97%	97%	0	23-Apr-08
Hong Kong, SAR, China	14	9	14	0	0	14	0	1.56	64%	86%	100%	100%	0	29-Feb-08
Japan	0	174	0	-	-	-	-	-	-	-	-	-	-	-
Korea, Republic of	33	87	26	0	0	26	0	0.30	81%	88%	96%	100%	0	10-Jan-08
Lao PDR	50	27	19	0	0	19	0	0.70	63%	79%	95%	100%	0	03-Mar-08
Macao, SAR, China	3	1	0	-	-	-	-	-	-	-	-	-	-	07-Jan-08
Malaysia	121	92	106	0	0	106	0	1.15	74%	89%	62%	96%	0	11-Mar-08
Mongolia	7	8	8	0	0	8	0	1.00	100%	100%	100%	-	0	22-Feb-08
New Zealand	8	8	4	0	0	4	0	0.50	50%	75%	75%	50%	0	04-Apr-08
Pacific Island Countries	23	10	13	0	1	12	0	1.30	38%	38%	62%	88%	0	13-Apr-08
Papua New Guinea	13	25	25	0	0	25	0	1.00	68%	88%	88%	100%	0	13-May-08
Philippines	437	335	509	0	0	509	0	1.52	77%	85%	80%	81%	0	16-May-08
Singapore	5	7	12	0	0	12	0	1.71	92%	100%	100%	100%	0	29-Jan-08
Vietnam	503	321	391	0	0	391	0	1.22	97%	88%	99%	100%	0	14-Apr-08
Western Pacific Region	7,012	3,846	6,238	3**	3	6,232	0	1.62	90%	93%	95%	92%	0	

* Follow-up is not required by the Polio Expert Committee if a case can be classified as non-polio AFP on the information available.

** Due to vaccine-derived polio virus.

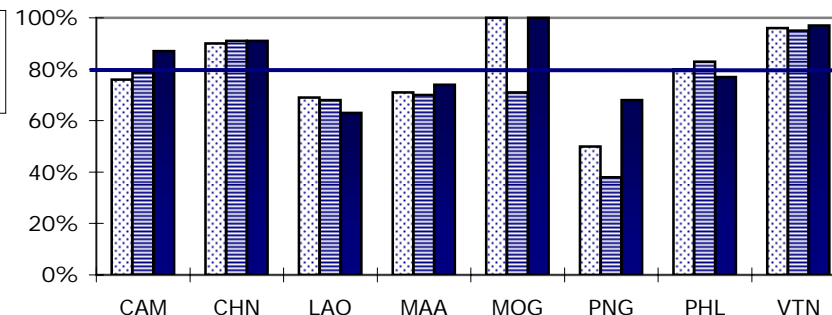
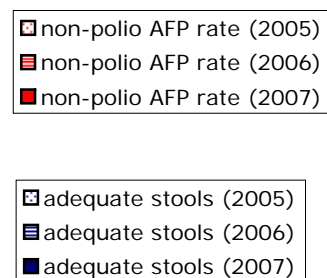
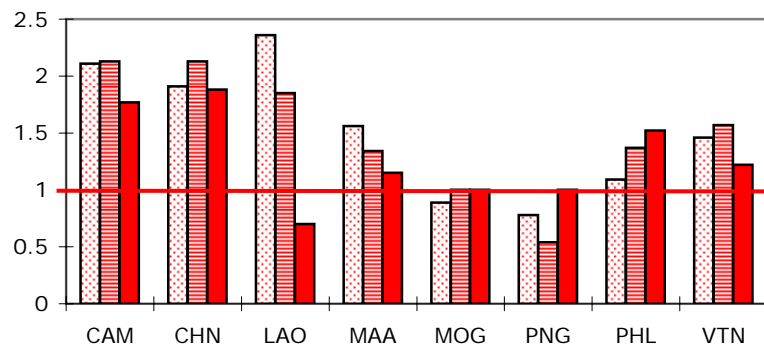


Table 2: Laboratory investigation of AFP cases with onset in 2007

Country	National Lab ¹	AFP Cases with Specimens	AFP Cases Positive For:					Pending	% Positive for NPEV	% Results Reported w/n 28 Days	Latest Report Date
			P1	P2	P3	Polio Mix	Polio/NPEV				
Australia	VIDRL*	24	1**	0	0	0	0	0	11%	100%	10-Apr-08
Brunei Darussalam	VIDRL*	4	0	0	0	0	0	0	25%	100%	10-Jan-08
Cambodia	NIID	97	0	0	0	0	0	0	20%	100%	23-Jan-08
China, Anhui	Prov. Lab	216	0	3	1	5	2	0	10%	95%	23-Apr-08
China, Beijing	Prov. Lab	20	0	0	1	0	0	0	15%	100%	23-Apr-08
China, Chongqing	Prov. Lab	66	0	0	0	1	2	0	8%	99%	23-Apr-08
China, Fujian	Prov. Lab	100	1	1	3	2	1	0	8%	97%	23-Apr-08
China, Gansu	Prov. Lab	123	0	1	1	0	0	0	10%	98%	23-Apr-08
China, Guangdong	Prov. Lab	276	0	6	3	5	0	0	11%	96%	23-Apr-08
China, Guangxi	Prov. Lab	295	4	4	3	3	1	0	10%	99%	23-Apr-08
China, Guizhou	Prov. Lab	212	2	2	1	1	1	0	10%	97%	23-Apr-08
China, Hainan	Prov. Lab	43	0	0	0	1	0	0	21%	99%	23-Apr-08
China, Hebei	Prov. Lab	356	3	6	7	3	0	0	5%	93%	23-Apr-08
China, Heilongjiang	Prov. Lab	116	3	1	0	6	0	0	2%	100%	23-Apr-08
China, Henan	Prov. Lab	410	2	7	0	3	0	0	7%	94%	23-Apr-08
China, Hubei	Prov. Lab	198	1	1	1	0	0	0	4%	69%	23-Apr-08
China, Hunan	Prov. Lab	275	2	4	2	6	2	0	9%	99%	23-Apr-08
China, Jiangsu	Prov. Lab	275	4	3	0	0	0	0	13%	99%	23-Apr-08
China, Jiangxi	Prov. Lab	151	1	4	6	3	3	0	11%	100%	23-Apr-08
China, Jilin	Prov. Lab	79	1	2	0	0	0	0	17%	95%	23-Apr-08
China, Liaoning	Prov. Lab	96	0	0	2	0	0	0	7%	93%	23-Apr-08
China, Neimongol	Prov. Lab	71	0	0	1	1	1	0	4%	98%	23-Apr-08
China, Ningxia	Prov. Lab	29	0	0	0	0	0	0	10%	93%	23-Apr-08
China, Qinghai	Prov. Lab	25	0	0	0	0	0	0	8%	90%	23-Apr-08
China, Shaanxi	Prov. Lab	121	0	0	1	1	0	0	5%	100%	23-Apr-08
China, Shandong	Prov. Lab	364	1	9	2	3	0	0	5%	93%	23-Apr-08
China, Shanghai	Prov. Lab	30	0	1	2	0	0	0	3%	97%	23-Apr-08
China, Shanxi	Prov. Lab	181	5	0	3	1	0	0	6%	97%	23-Apr-08
China, Sichuan	Prov. Lab	339	1	3	2	4	0	0	10%	91%	23-Apr-08
China, Tianjin	Prov. Lab	21	0	0	1	0	0	0	0%	100%	23-Apr-08
China, Tibet	Prov. Lab	6	0	0	0	0	0	0	0%	25%	23-Apr-08
China, Xinjiang	Prov. Lab	59	0	1	0	1	0	0	10%	100%	23-Apr-08
China, Yunnan	Prov. Lab	210	1	3	2	3	0	0	11%	97%	23-Apr-08
China, Zhejiang	Prov. Lab	154	1	0	1	4	0	0	9%	82%	23-Apr-08
Hong Kong ² , SAR, China	PHLC	14	0	0	0	0	0	0	0%	100%	04-Feb-08
Korea, Rep. Of	NIH	26	0	0	0	0	0	0	0%	100%	10-Jan-08
Lao PDR	NIID	19	0	0	0	0	0	0	26%	100%	28-Jan-08
Malaysia	IMR, KL	111	0	0	0	0	0	0	3%	99%	11-Feb-08
Mongolia	PHI	8	0	0	0	0	0	0	0%	100%	25-Jan-08
New Zealand	IESR	3	0	0	0	0	0	0	0%	100%	14-Jan-08
Pacific Island Countries	VIDRL*	9	0	0	0	0	0	0	33%	100%	19-Mar-08
Papua New Guinea	IMR, PNG	38	0	0	0	0	1	0	43%	91%	04-Apr-08
Philippines	RITM	527	1	0	1	2	0	0	6%	100%	20-Jun-08
Singapore	SGH	12	0	0	0	0	0	0	13%	100%	18-Feb-08
Vietnam, North	NIHE	268	1	1	1	0	0	0	12%	98%	30-Jan-08
Vietnam, South	PI	137	0	0	1	1	0	0	19%	99%	13-Feb-08
Total		6,214	36	63	49	60	14	0	9%	96%	

* Specimen test reports are under the guidelines of the June 2006 test algorithm.

** Isolated from a 22-year old Pakistani student living in Melbourne with recent return from Pakistan.

¹ Acronyms:

VIDRL - Victorian Infectious Diseases Reference Laboratory, Australia

NIID - National Institute of Infectious Diseases, Japan

PHLC - Public Health Laboratory Centre, Hong Kong

SGH - Singapore General Hospital

² Includes cases from Macao, SAR, China

IMR, KL - Institute of Medical Research, Kuala Lumpur

IMR, PNG - Institute of Medical Research, Papua New Guinea

IESR - Institute of Environmental Science and Research, New Zealand

RITM - Research Institute for Tropical Medicine, Philippines

PHI - Public Health Institute, Mongolia

NIH - National Institute of Health, Seoul

NIHE - National Institute of Hygiene and Epidemiology, Hanoi

PI - Pasteur Institute, Ho Chi Minh

Table 3: Intratypic differentiation of polio isolates from AFP cases with onset in 2007

Country	Regional Reference Lab ¹	AFP Cases w/ Polio Isolates	ITD Results ²								Sequencing			ITD Results w/n 14 Days of Receipt	ITD Results w/n 60 Days of Onset
			P1S	P1W	P2S	P2W	P3S	P3W	Pending ³	Discordant ⁴	VDPV	Not VDPV	Pending		
China	CCDC	233	75	0	131	0	105	0	0	5	4	1	0	57%	50%
Hong Kong, SAR, China	PHLC	0	-	-	-	-	-	-	-	-	-	-	-	-	-
New Zealand	IESR	0	-	-	-	-	-	-	-	-	-	-	-	-	-
Singapore	SGH	0	-	-	-	-	-	-	-	-	-	-	-	-	-
Australia	VIDRL	1	0	1*	0	0	0	0	0	0	-	-	-	100%	-
Malaysia	VIDRL	0	-	-	-	-	-	-	-	-	-	-	-	-	-
Pacific Island Countries	VIDRL	0	-	-	-	-	-	-	-	-	-	-	-	-	-
Papua New Guinea	VIDRL	1	0	0	0	0	1	0	0	0	-	-	-	100%	0%
Philippines	VIDRL	3	1	0	2	0	3	0	0	0	-	-	-	100%	100%
Japan	NIID	0	-	-	-	-	-	-	-	-	-	-	-	-	-
Cambodia	NIID	0	-	-	-	-	-	-	-	-	-	-	-	-	-
Korea, Rep. Of	NIID	0	-	-	-	-	-	-	-	-	-	-	-	-	-
Lao PDR	NIID	0	-	-	-	-	-	-	-	-	-	-	-	-	-
Mongolia	NIID	0	-	-	-	-	-	-	-	-	-	-	-	-	-
Vietnam	NIID	3	2	0	1	0	1	0	0	0	-	-	-	100%	100%
Total		241	78	1*	134	0	110	0	0	5	4	1	0	58%	52%

* Isolated from a 22-year old Pakistani student living in Melbourne with recent return from Pakistan.

Table 4: Laboratory investigation of polio isolates from non-AFP cases in 2007⁵

Country	Regional Reference Lab	Polio Isolates	ITD Results								Sequencing	
			P1S	P1W	P2S	P2W	P3S	P3W	Pending	Discordant	VDPV	Pending
China	CCDC	97	46	0	31	0	20	0	0	0	-	-
Hong Kong, SAR, China	PHLC	18	8	0	8	0	2	0	0	2	0	0
New Zealand	IESR	0	-	-	-	-	-	-	-	-	-	-
Singapore	SGH	1	0	0	1	0	0	0	0	0	-	-
Australia	VIDRL	0	-	-	-	-	-	-	-	-	-	-
Malaysia	VIDRL	23	11	0	5	0	7	0	0	0	-	-
Pacific Island Countries	VIDRL	0	-	-	-	-	-	-	-	-	-	-
Papua New Guinea	VIDRL	5	2	0	2	0	1	0	0	0	-	-
Philippines	VIDRL	0	-	-	-	-	-	-	-	-	-	-
Cambodia	NIID	0	-	-	-	-	-	-	-	-	-	-
Japan	NIID	0	-	-	-	-	-	-	-	-	-	-
Korea, Rep. Of	NIID	0	-	-	-	-	-	-	-	-	-	-
Lao PDR	NIID	0	-	-	-	-	-	-	-	-	-	-
Mongolia	NIID	0	-	-	-	-	-	-	-	-	-	-
Vietnam	NIID	2	1	0	1	0	0	0	0	0	-	-
Total		146	68	0	48	0	30	0	0	2	0	0

¹ Acronyms:

CCDC - Chinese Center for Disease Control and Prevention
VIDRL - Victorian Infectious Diseases Reference Laboratory, Australia
NIID - National Institute of Infectious Diseases, Japan
PHLC - Public Health Laboratory Centre, Hong Kong
SGH - Singapore General Hospital

² ITD Results:

S - Sabin; W - Wild

³ Pending ITD = Pending Antigenic ITD and/or Pending Molecular ITD

Total Pending Cases = Pending ITD + Pending Sequencing

⁴ Antigenic ITD <> Molecular ITD for all serotypes. Cases with discordant ITD results

may be counted more than once under "ITD results", ie. as "discordant" and "S" or "W", depending on the results of sequencing.

⁵ Based on year of collection of sample, if available. Otherwise, based on year of receipt at reference laboratory.