

HIGHLIGHTS

Meeting of the Polio Oversight Board

On 13 January a regular meeting (via teleconference) of the Polio Oversight Board (POB) took place. The POB discussed the progress on the following items:

Pakistan:

The program priorities for the next six months include reducing the number of missed children and continuously improving the campaign performance. Political commitment and program oversight have been strengthened. The POB appreciated the work of polio staff under difficult circumstances and noted POB's commitment to help get Pakistan over the finish line.

Afghanistan:

Despite progress, inaccessible areas and cross border movements represent continuous challenges for the program. It was noted that insecurity was likely to be a major challenge moving forward. The POB and the Global Polio Eradication Initiative (GPEI) offered commitment and support to help Afghanistan address performance issues.

Financial update:

In the September 2015 meeting, the POB approved a \$7 billion overall budget. Polio eradication activities for the first quarter of 2016 are fully funded. A comprehensive report on 2015 expenditures will be available by the end of March 2016.

Resource mobilization:

A donor strategy has been completed for all markets with donor maps and documents for key donors are being finalized. Provided that all current donors maintain their commitments, GPEI will be close to reach its fundraising targets.

Routine immunization:

The switch from trivalent to bivalent OPV is on track for 155 countries. Due to global supply constraints, 19 countries will be introducing inactivated polio vaccine (IPV) after the switch dates. The POB agreed to work with GAVI to strengthen immunization systems.

Legacy planning:

Multiple countries were identified as high priority for legacy planning activities as they have the most polio assets. The Legacy Management Group has a budget to support priority countries. The POB agreed to support high-level advocacy for legacy.

See more at:

http://www.polioeradication.org/Portals/0/Document/Aboutus/Governance/POB/POB_Minutes_Mtg20160113.pdf

CONTACT US

Expanded Programme on Immunization
Regional Office for the Western Pacific
World Health Organization
P.O. Box 2932, 1000 Manila, Philippines
Phone: +63 2 5288001
Fax: +63 2 5211036, 5260279
Email: WPR_EPIData@wpro.who.int
Web: www.wpro.who.int/immunization

Chart 1. Non-polio AFP rate (per 100 000 persons < 15 years of age), 2013–2015

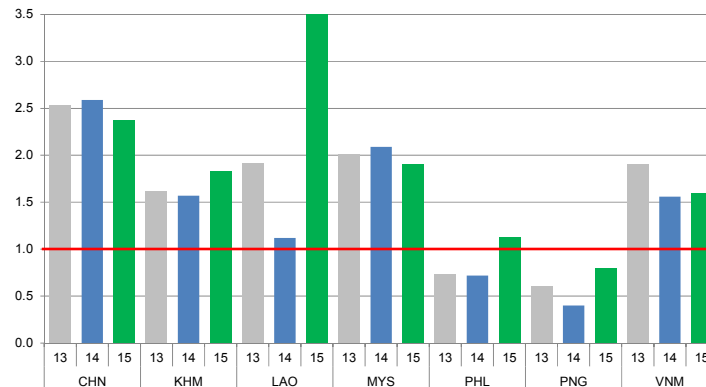


Chart 2. Adequate specimen collection rate, 2013–2015

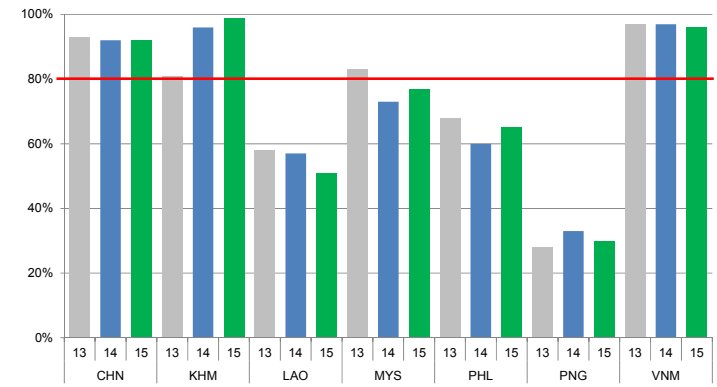


Chart 3. Percentage of reported AFP cases by number of polio vaccination doses, 2015

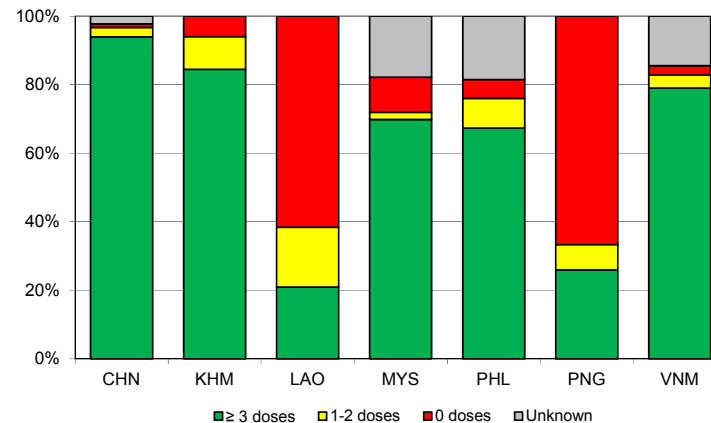
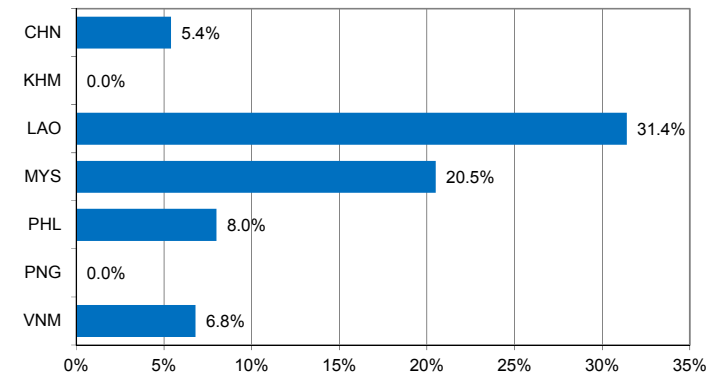


Chart 4. Percentage of reported AFP cases with pending classification > 90 days after onset, 2015



Note: Priority countries were selected for the charts. Official WHO acronyms have been used for abbreviation: CHN (China), KHM (Cambodia), LAO (Lao People's Democratic Republic), MYS (Malaysia), PHL (Philippines), PNG (Papua New Guinea), and VNM (Viet Nam).

Table 1A. Classification of AFP cases with onset in 2015 and key surveillance indicators

Country/area	2014	2015												
	Total reported cases	Annual expected cases <15 years of age	Total reported cases	Classification						Indicators			Latest report date ⁴	Days since last report ⁵
				Confirmed wild poliovirus	Vaccine-derived poliovirus (VDPV)	Polio-compatible	Discarded (Non-polio)	Pending		Non-polio AFP rate	% with adequate specimens ²	% investigated ≤ 2 days of notification ³		
								Total	> 90 days ¹ # (%)					≥ 1
Australia	60	44	57	0	0	0	41	16	4 (7.0%)	1.30	25%	98%	29-Jan-16	18
Brunei Darussalam	4	1	3	0	0	0	2	1	0 (0.0%)	3.00	100%	100%	06-Jan-16	41
Cambodia	72	46	84	0	0	0	84	0	0 (0.0%)	1.83	99%	100%	01-Feb-16	-
China	5758	2234	5297	0	0	1	4418	878	287 (5.4%)	2.37	92%	100%	11-Feb-16	5
China, Hong Kong SAR	19	8	10	0	0	0	10	0	0 (0.0%)	1.25	80%	100%	04-Feb-16	-
China, Macao SAR	1	1	1	0	0	0	1	0	0 (0.0%)	1.00	100%	100%	15-Jan-16	-
Japan	-	163	-	-	-	-	-	-	-	-	-	-	-	-
Lao People's Democratic Republic	28	24	86	0	7 ⁶	0	48	31	27 (31.4%)	3.58	51%	98%	16-Feb-16	0
Malaysia	161	77	146	0	0	0	107	39	30 (20.5%)	1.90	77%	64%	16-Feb-16	0
Mongolia	9	9	9	0	0	0	7	2	0 (0.0%)	1.00	100%	100%	04-Jan-16	43
New Zealand	8	9	7	0	0	0	5	2	2 (28.6%)	0.78	29%	100%	06-Jan-16	41
Papua New Guinea	12	34	27	0	0	0	26	1	0 (0.0%)	0.79	30%	74%	12-Feb-16	4
Philippines	272	387	438	0	0	0	397	41	35 (8.0%)	1.13	65%	97%	11-Feb-16	5
Republic of Korea	88	70	82	0	0	0	78	4	0 (0.0%)	1.17	85%	87%	15-Jan-16	32
Singapore	8	6	8	0	0	0	8	0	0 (0.0%)	1.33	100%	88%	03-Feb-16	-
Viet Nam	361	231	367	0	0	0	271	96	25 (6.8%)	1.59	96%	96%	06-Jan-16	41
Pacific island countries and areas	15	10	14	0	0	0	10	4	3 (21.4%)	1.40	71%	100%	26-Jan-16	21
Total	6876	3354	6636	0	7	1	5513	1115	413 (6.2%)	1.98	89%	98%		

1. Number (%) of reported cases pending classification more than 90 days from date of onset of paralysis to date of last report
2. Percentage of reported cases with two stool specimens collected 24 hours apart and within 14 days of onset of paralysis
3. Percentage of reported cases investigated within two days of notification
4. Report date is fixed as soon as all cases for the year have been classified
5. Countries are expected to submit data at least once per month to WPRO
6. Includes two cases that are 15 years old or older

Green	Reached or surpassed target
Yellow	Nearly reached target: 0.5–0.99 for non-polio AFP rate; 60–79% for other indicators
Red	Substantially below target

Table 1B. Classification of AFP cases with onset in 2016 and key surveillance indicators

Country/area	2015	2016												
	Total reported cases	Annual expected cases <15 years of age	Total reported cases	Classification						Indicators			Latest report date	Days since last report ⁵
				Confirmed wild poliovirus	Vaccine-derived poliovirus (VDPV)	Polio-compatible	Discarded (Non-polio)	Pending		Non-polio AFP rate ²	% with adequate specimens ³	% investigated ≤ 2 days of notification ⁴		
								Total	> 90 days ¹ # (%)					
≥ 1	≥ 80%	≥ 80%	≤ 30											
Australia	57	45	1	0	0	0	0	1	0 (0.0%)	0.17	100%	100%	29-Jan-16	18
Brunei Darussalam	3	1	0	-	-	-	-	-	-	-	-	-	06-Jan-16	41
Cambodia	84	46	3	0	0	0	3	0	0 (0.0%)	0.48	100%	100%	10-Feb-16	6
China	5297	2234	128	0	0	0	3	125	0 (0.0%)	0.43	92%	100%	11-Feb-16	5
China, Hong Kong SAR	10	8	0	-	-	-	-	-	-	-	-	-	04-Feb-16	12
China, Macao SAR	1	1	0	-	-	-	-	-	-	-	-	-	15-Jan-16	32
Japan	-	163	-	-	-	-	-	-	-	-	-	-	-	-
Lao People's Democratic Republic	86	24	17	0	2 ⁶	0	6	9	0 (0.0%)	5.26	71%	94%	16-Feb-16	0
Malaysia	146	77	6	0	0	0	0	6	0 (0.0%)	0.58	83%	33%	10-Feb-16	6
Mongolia	9	9	0	-	-	-	-	-	-	-	-	-	04-Jan-16	43
New Zealand	7	9	0	-	-	-	-	-	-	-	-	-	06-Jan-16	41
Papua New Guinea	27	34	2	0	0	0	0	2	0 (0.0%)	0.44	100%	100%	12-Feb-16	4
Philippines	438	387	19	0	0	0	0	19	0 (0.0%)	0.36	79%	89%	11-Feb-16	5
Republic of Korea	82	70	0	-	-	-	-	-	-	-	-	-	15-Jan-16	32
Singapore	8	6	0	-	-	-	-	-	-	-	-	-	03-Feb-16	13
Viet Nam	367	231	0	-	-	-	-	-	-	-	-	-	06-Jan-16	41
Pacific island countries and areas	14	10	0	-	-	-	-	-	-	-	-	-	26-Jan-16	21
Total	6636	3355	176	0	2	0	12	162	0 (0.0%)	0.39	89%	96%		

1. Number (%) of reported cases pending classification more than 90 days from date of onset of paralysis to date of last report
2. Annualized non-polio AFP rate per 100 000 population under 15 years of age
3. Percentage of reported cases with two stool specimens collected 24 hours apart and within 14 days of onset of paralysis
4. Percentage of reported cases investigated within two days of notification
5. Countries are expected to submit data at least once per month to WPRO
6. Includes one case that is 15 years old or older

Green	Reached or surpassed target
Yellow	Nearly reached target: 0.5–0.99 for non-polio AFP rate; 60–79% for other indicators
Red	Substantially below target

Table 3. Laboratory confirmation of polio isolates from environmental samples in 2014–2015 ¹

Country/area	Intratype differentiation lab ²	2014													2015														
		Total number of samples processed	Total number of samples with polio isolates	Type 1			Type 2			Type 3			NPEV	Pending ITD	Discordant pending sequencing	Total number of samples processed	Total number of samples with polio isolates	Type 1			Type 2			Type 3			NPEV	Pending ITD	Discordant pending sequencing
				Wild	Sabin	VDPV	Wild	Sabin	VDPV	Wild	Sabin	VDPV						Wild	Sabin	VDPV	Wild	Sabin	VDPV	Wild	Sabin	VDPV			
Australia	VIDRL	3	0	-	-	-	-	-	-	-	-	-	3	0	0	29	2	0	0	0	1	0	0	1	0	26	0	0	
China (total) ³		167	167	0	79	0	0	129	2	0	115	0	0	0	1486	630	0	193	0	0	243	1	0	274	0	851	5	35	
China, Fujian	Prov. Lab/CCDC	14	14	0	1	0	0	4	0	0	0	0	0	0	77	13	0	0	0	0	12	0	0	1	0	64	0	0	
China, Gansu	Prov. Lab/CCDC	0	0	-	-	-	-	-	-	-	-	-	-	-	88	46	0	11	0	0	9	0	0	28	0	37	5	0	
China, Guangdong	Prov. Lab/CCDC	48	48	0	21	0	0	22	0	0	15	0	0	0	171	43	0	11	0	0	24	1	0	7	0	128	0	0	
China, Guangxi	Prov. Lab/CCDC	0	0	-	-	-	-	-	-	-	-	-	-	-	261	71	0	10	0	0	12	0	0	52	0	190	0	0	
China, Heilongjiang	Prov. Lab/CCDC	18	18	0	11	0	0	37	1	0	47	0	0	0	47	20	0	2	0	0	16	0	0	2	0	27	0	0	
China, Shandong	Prov. Lab/CCDC	48	48	0	13	0	0	16	0	0	23	0	0	0	305	108	0	43	0	0	25	0	0	40	0	197	0	0	
China, Shanghai	Prov. Lab/CCDC	12	12	0	6	0	0	12	0	0	10	0	0	0	129	21	0	2	0	0	12	0	0	7	0	108	0	0	
China, Xinjiang	Prov. Lab/CCDC	27	27	0	27	0	0	38	1	0	20	0	0	0	396	308	0	114	0	0	133	0	0	137	0	88	0	35	
China, Yunnan	Prov. Lab/CCDC	0	0	-	-	-	-	-	-	-	-	-	-	-	12	0	0	0	0	0	0	0	0	0	0	12	0	0	
Malaysia	IMR	21	7	0	1	0	0	1	0	0	5	0	7	0	0	-	-	-	-	-	-	-	-	-	-	-	-	-	
Total		191	174	0	80	0	0	130	2	0	120	0	10	0	1515	632	0	193	0	0	244	1	0	275	0	877	5	35	

1. Based on year of collection of sample, if available. Otherwise, based on year of receipt at reference laboratory.
2. CCDC (Chinese Center for Disease Control and Prevention, China); IMR (Institute of Medical Research, Malaysia); VIDRL (Victorian Infectious Diseases Reference Laboratory, Australia)
3. Reported data from China are currently being verified and may be amended in the next issue of the bulletin.

Table 4. Vaccine-derived poliovirus identified from laboratory testing², 2000-2016

Country/area	2000–2009 ³	2010	2011	2012	2013	2014	2015	2016
Cambodia	2006 - 1 Total - 2							
China	2009 - 1 Total - 27	aVDPV2 (3 AFP + 1 contact + 1 non-AFP) aVDPV3 (1 AFP + 1 non-AFP)	aVDPV1 (1 AFP) aVDPV2 (2 AFP + 1 contact) cVDPV2 (1 AFP + 1 non-AFP) iVDPV2 (1 AFP + 1 non-AFP) iVDPV3 (1 AFP)	aVDPV1 (1 AFP) aVDPV2 (2 AFP) cVDPV2 (2 AFP + 1 contact) iVDPV2 + iVDPV3 (1 AFP)	aVDPV2 (1 non-AFP) iVDPV2 + iVDPV3 (1 AFP)	aVDPV1 (1 non-AFP) aVDPV2 (2 AFP) iVDPV3 (1 AFP)	aVDPV1 (1 AFP) aVDPV2 (1 AFP) iVDPV2 (1 AFP)	
China, Hong Kong SAR	2005 - 3							
Japan	2005 - 1 Total - 2							
Lao People's Democratic Republic	2004 - 3						cVDPV1 (7 AFP + 20 contacts)	cVDPV1 (2 AFP + 3 contacts)
Mongolia	2003 - 1							
Philippines	2001 - 3					aVDPV2 (1 AFP)		
Viet Nam				aVDPV2 (2 AFP)				

1. Prefix letter refers to the VDPV category: "cVDPV" = circulating VDPV, "iVDPV" = immunodeficiency-associated VDPV, "aVDPV" = ambiguous VDPV, "?VDPV" = pending. Suffix number refers to the poliovirus serotype (types 1, 2 or 3).
2. Source of specimens could be AFP cases, contacts, or non-AFP cases
3. Refers to year of last VDPV case, and aggregate total of VDPV cases for 2000-2009