

## HIGHLIGHTS

### New vaccine-derived polioviruses type 2 (VDPV2) isolated from northern Nigeria

On 7 April 2017 the WHO Headquarters received advanced notification of several new vaccine-derived polioviruses type 2 (VDPV2) isolated from northern Nigeria.

The following five new VDPV2s have been isolated:

One environmental sample from Gombe local government area (LGA), Gombe state was collected on 6 March. This is from a different environmental collection site than the previously isolated VDPV2 collected in Gombe on 30 January.

Three environmental samples from Sokoto state.

One positive sample isolated from a healthy person from South Sokoto LGA, Sokoto state, collected on 28 February.

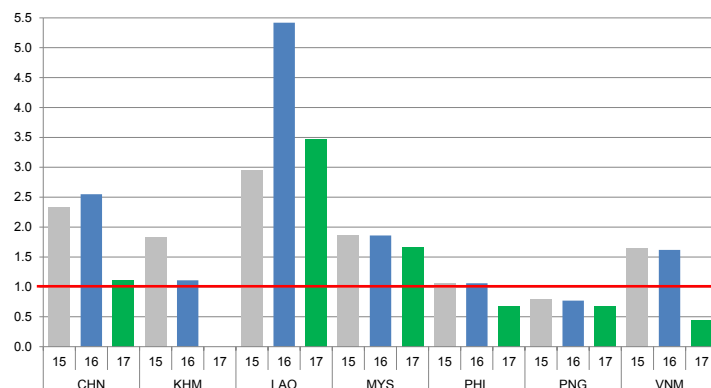
Genetic sequencing is pending on all of the newly-isolated viruses, and this process is being expedited to assess any eventual linkages to previously-detected isolates (which would potentially re-classify their status as "circulating").

The WHO Headquarters is working with the regional and country counterparts and partners in supporting the local public health authorities to conduct a field investigation and thorough risk assessment, to more clearly assess any potential risk of circulation of the identified VDPV2 strains, and to discuss needs for possible response immunization.

## CONTACT US

Expanded Programme on Immunization  
Regional Office for the Western Pacific  
World Health Organization  
P.O. Box 2932, 1000 Manila, Philippines  
Phone: +63 2 5288001  
Fax: +63 2 5211036, 5260279  
Email: [wproepidata@who.int](mailto:wproepidata@who.int)  
Web: [www.wpro.who.int/immunization/en](http://www.wpro.who.int/immunization/en)

Chart 1. Non-polio AFP rate (per 100 000 persons < 15 years of age), 2015–2017\*



\* AFP rate annualized as of week 15

Chart 2. Adequate specimen collection rate, 2015–2017

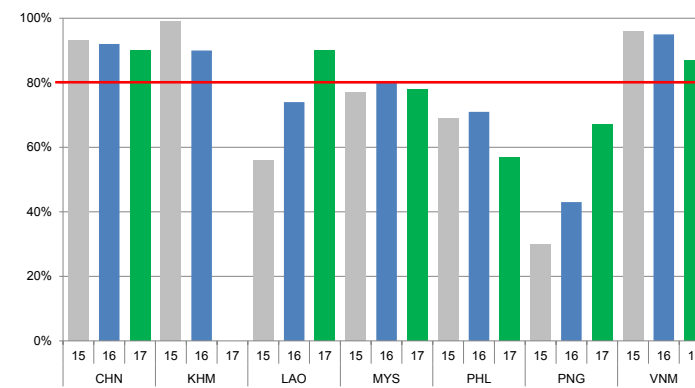


Chart 3. Percentage of reported AFP cases by number of polio vaccination doses, 2016

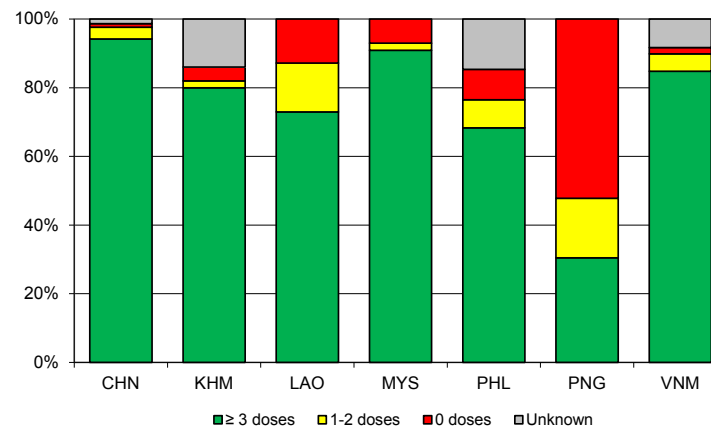
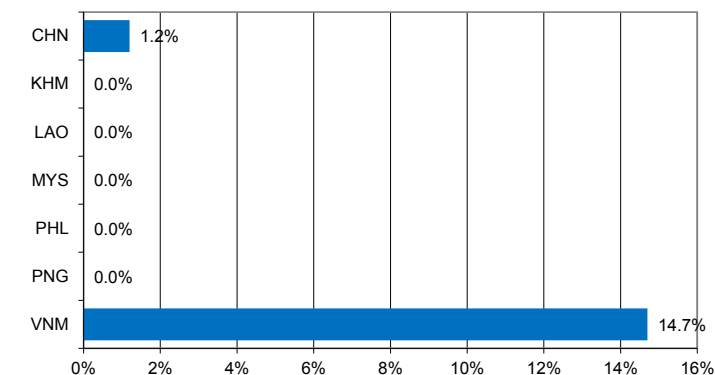


Chart 4. Percentage of reported AFP cases with pending classification > 90 days after onset, 2016



Note: Priority countries were selected for the charts. Official WHO acronyms have been used for abbreviation: CHN (China), KHM (Cambodia), LAO (Lao People's Democratic Republic), MYS (Malaysia), PHL (Philippines), PNG (Papua New Guinea), and VNM (Viet Nam).

Table 1A. Classification of AFP cases with onset in 2016 and key surveillance indicators

Country/area	2015	2016												
	Total reported cases	Annual expected cases <15 years of age	Total reported cases	Classification						Indicators			Latest report date <sup>4</sup>	Days since last report <sup>5</sup>
				Confirmed wild poliovirus	Vaccine-derived poliovirus (VDPV)	Polio-compatible	Discarded (Non-polio)	Pending		Non-polio AFP rate	% with adequate specimens <sup>2</sup>	% investigated ≤ 2 days of notification <sup>3</sup>		
								Total	> 90 days <sup>1</sup> # (%)					≥ 1
Australia	53	45	62	0	0	1	61	0	0 (0.0%)	1.38	45%	95%	20-Mar-17	-
Brunei Darussalam	3	1	1	0	0	0	1	0	0 (0.0%)	1.00	100%	100%	11-Jan-17	-
Cambodia	84	45	50	0	0	0	50	0	0 (0.0%)	1.11	90%	92%	16-Mar-17	-
China	5217	2234	5695	0	0	0	5627	68	68 (1.2%)	2.55	92%	100%	05-Apr-17	12
China, Hong Kong SAR	10	8	10	0	0	0	10	0	0 (0.0%)	1.25	90%	100%	09-Jan-17	-
China, Macao SAR	1	1	1	0	0	0	1	0	0 (0.0%)	1.00	100%	100%	12-Jan-17	-
Japan	-	163	-	-	-	-	-	-	-	-	-	-	-	-
Lao People's Democratic Republic	71	24	133	0	3 <sup>6</sup>	0	130	0	0 (0.0%)	5.42	74%	92%	13-Mar-17	-
Malaysia	144	77	143	0	0	0	143	0	0 (0.0%)	1.86	80%	81%	06-Mar-17	-
Mongolia	9	9	7	0	0	0	7	0	0 (0.0%)	0.78	71%	100%	13-Mar-17	-
New Zealand	7	9	12	0	0	0	12	0	0 (0.0%)	1.33	58%	83%	13-Mar-17	-
Papua New Guinea	27	30	23	0	0	0	23	0	0 (0.0%)	0.77	43%	91%	10-Apr-17	-
Philippines	413	394	417	0	0	0	417	0	0 (0.0%)	1.06	71%	95%	10-Mar-17	-
Republic of Korea	83	69	69	0	0	0	69	0	0 (0.0%)	1.00	94%	100%	27-Feb-17	-
Singapore	8	6	7	0	0	0	7	0	0 (0.0%)	1.17	100%	100%	06-Jan-17	-
Viet Nam	380	232	375	0	0	0	311	64	55 (14.7%)	1.62	95%	91%	16-Mar-17	32
Pacific island countries and areas	15	10	19	0	0	0	15	4	4 (21.1%)	1.90	68%	100%	03-Apr-17	14
<b>Total</b>	<b>6525</b>	<b>3357</b>	<b>7024</b>	<b>0</b>	<b>3</b>	<b>1</b>	<b>6884</b>	<b>136</b>	<b>127 (1.8%)</b>	<b>2.09</b>	<b>90%</b>	<b>98%</b>		<b>-</b>

1. Number (%) of reported cases pending classification more than 90 days from date of onset of paralysis to date of last report

2. Percentage of reported cases with two stool specimens collected 24 hours apart and within 14 days of onset of paralysis

3. Percentage of reported cases investigated within two days of notification

4. Report date is fixed as soon as all cases for the year have been classified

5. Countries are expected to submit data at least once per month to WPRO

6. Includes two cases that are 15 years old or older

Green	Reached or surpassed target
Yellow	Nearly reached target: 0.5–0.99 for non-polio AFP rate; 60–79% for other indicators
Red	Substantially below target

Table 1B. Classification of AFP cases with onset in 2017 and key surveillance indicators

Country/area	2016	2017												
	Total reported cases	Annual expected cases <15 years of age	Total reported cases	Classification						Indicators			Latest report date	Days since last report <sup>5</sup>
				Confirmed wild poliovirus	Vaccine-derived poliovirus (VDPV)	Polio-compatible	Discarded (Non-polio)	Pending		Non-polio AFP rate <sup>2</sup>	% with adequate specimens <sup>3</sup>	% investigated ≤ 2 days of notification <sup>4</sup>		
								Total	> 90 days <sup>1</sup> # (%)					≥ 1
Australia	62	45	10	0	0	0	4	6	0 (0.0%)	0.77	40%	100%	13-Apr-17	4
Brunei Darussalam	1	1	0	-	-	-	-	-	-	-	-	-	10-Apr-17	7
Cambodia	50	54	0	-	-	-	-	-	-	-	-	-	21-Mar-17	27
China	5695	2256	723	0	0	0	61	662	41 (5.7%)	1.11	90%	99%	05-Apr-17	12
China, Hong Kong SAR	10	8	0	-	-	-	-	-	-	-	-	-	03-Apr-17	14
China, Macao SAR	1	1	0	-	-	-	-	-	-	-	-	-	12-Apr-17	5
Japan	-	161	-	-	-	-	-	-	-	-	-	-	-	-
Lao People's Democratic Republic	133	21	21	0	0	0	15	6	0 (0.0%)	3.47	90%	86%	12-Apr-17	5
Malaysia	143	77	37	0	0	0	10	27	5 (13.5%)	1.67	78%	54%	12-Apr-17	5
Mongolia	7	9	2	0	0	0	1	1	0 (0.0%)	0.77	100%	100%	05-Apr-17	12
New Zealand	12	9	2	0	0	0	0	2	0 (0.0%)	0.77	0%	100%	13-Mar-17	35
Papua New Guinea	23	31	6	0	0	0	2	4	0 (0.0%)	0.67	67%	100%	10-Apr-17	7
Philippines	417	394	76	0	0	0	44	32	1 (1.3%)	0.67	57%	96%	31-Mar-17	17
Republic of Korea	69	68	7	0	0	0	7	0	0 (0.0%)	0.36	57%	100%	27-Feb-17	49
Singapore	7	6	1	0	0	0	1	0	0 (0.0%)	0.58	100%	100%	07-Apr-17	10
Viet Nam	375	234	30	0	0	0	0	30	1 (3.3%)	0.44	87%	90%	16-Mar-17	32
Pacific island countries and areas	19	11	3	0	0	0	0	3	0 (0.0%)	0.95	33%	100%	03-Apr-17	14
<b>Total</b>	<b>7024</b>	<b>3386</b>	<b>918</b>	<b>0</b>	<b>0</b>	<b>0</b>	<b>145</b>	<b>773</b>	<b>48 (5.2%)</b>	<b>0.94</b>	<b>85%</b>	<b>96%</b>		<b>-</b>

1. Number (%) of reported cases pending classification more than 90 days from date of onset of paralysis to date of last report
2. Annualized non-polio AFP rate per 100 000 population under 15 years of age
3. Percentage of reported cases with two stool specimens collected 24 hours apart and within 14 days of onset of paralysis
4. Percentage of reported cases investigated within two days of notification
5. Countries are expected to submit data at least once per month to WPRO

Green	Reached or surpassed target
Yellow	Nearly reached target: 0.5–0.99 for non-polio AFP rate; 60–79% for other indicators
Red	Substantially below target



Table 2B. Laboratory investigation of stool samples from AFP cases with onset in 2017 and key laboratory indicators

Country/area	Polio laboratory	Total no. of AFP cases with specimens	Results of virus isolation for AFP cases								% results reported $\leq$ 14 days	% specimens positive for NPEV	Latest report date	Intratypic differentiation/ Sequencing laboratory <sup>1</sup>	No. of isolates received	Results of intratypic differentiation (ITD)/sequencing for virus isolates											
			L20B positive	L20B positive + NPEV	NPEV only	Negative	Pending $\leq$ 14 days	Pending > 14 days	Type 1							Type 2			Type 3			NPEV <sup>2</sup>	Pending ITD	Discordant pending sequencing	% ITD results reported $\leq$ 7 days of receipt $\geq$ 80%		
									Wild	Sabin						VDPV	Wild	Sabin	VDPV	Wild	Sabin					VDPV	
Australia	VIDRL	6	0	0	1	4	1	0	89%	33%	07-Apr-17	VIDRL	0	-	-	-	-	-	-	-	-	-	-	-	-	-	-
Brunei Darussalam	VIDRL	0	-	-	-	-	-	-	-	-	07-Apr-17	VIDRL	0	-	-	-	-	-	-	-	-	-	-	-	-	-	-
Cambodia	NIID	3	0	0	0	3	0	0	100%	0%	10-Apr-17	NIID	0	-	-	-	-	-	-	-	-	-	-	-	-	-	-
China (total)		700	7	0	19	632	0	42	91%	2%	05-Apr-17		26	0	10	0	0	0	0	16	0	0	0	0	0	0	91%
China, Anhui	Prov. Lab	35	0	0	0	35	0	0	97%	0%		Prov. Lab/CCDC	1	0	0	0	0	0	0	1	0	0	0	0	0	0	0%
China, Beijing	Prov. Lab	9	0	0	0	7	0	2	100%	0%		Prov. Lab/CCDC	0	-	-	-	-	-	-	-	-	-	-	-	-	-	-
China, Chongqing	Prov. Lab	14	1	0	1	11	0	1	78%	7%		Prov. Lab/CCDC	2	0	0	0	0	0	0	2	0	0	0	0	0	100%	
China, Fujian	Prov. Lab	27	1	0	0	26	0	0	80%	0%		Prov. Lab/CCDC	1	0	0	0	0	0	0	1	0	0	0	0	0	100%	
China, Gansu	Prov. Lab	9	0	0	0	9	0	0	100%	0%		Prov. Lab/CCDC	0	-	-	-	-	-	-	-	-	-	-	-	-	-	-
China, Guangdong	Prov. Lab	69	0	0	2	66	0	1	97%	2%		Prov. Lab/CCDC	2	0	2	0	0	0	0	0	0	0	0	0	0	100%	
China, Guangxi	Prov. Lab	33	1	0	3	28	0	1	100%	9%		Prov. Lab/CCDC	2	0	2	0	0	0	0	0	0	0	0	0	0	100%	
China, Guizhou	Prov. Lab	28	0	0	1	24	0	3	100%	4%		Prov. Lab/CCDC	0	-	-	-	-	-	-	-	-	-	-	-	-	-	-
China, Hebei	Prov. Lab	50	1	0	0	48	0	1	99%	0%		Prov. Lab/CCDC	3	0	0	0	0	0	0	3	0	0	0	0	0	100%	
China, Heilongjiang	Prov. Lab	12	0	0	0	12	0	0	100%	0%		Prov. Lab/CCDC	0	-	-	-	-	-	-	-	-	-	-	-	-	-	-
China, Henan	Prov. Lab	69	1	0	1	63	0	4	76%	2%		Prov. Lab/CCDC	2	0	0	0	0	0	0	2	0	0	0	0	0	100%	
China, Hubei	Prov. Lab	24	0	0	2	19	0	3	86%	10%		Prov. Lab/CCDC	0	-	-	-	-	-	-	-	-	-	-	-	-	-	-
China, Hunan	Prov. Lab	13	0	0	0	13	0	0	100%	0%		Prov. Lab/CCDC	2	0	1	0	0	0	0	1	0	0	0	0	0	100%	
China, Jiangsu	Prov. Lab	35	0	0	0	33	0	2	100%	0%		Prov. Lab/CCDC	0	-	-	-	-	-	-	-	-	-	-	-	-	-	-
China, Jiangxi	Prov. Lab	19	1	0	1	16	0	1	100%	3%		Prov. Lab/CCDC	1	0	0	0	0	0	0	1	0	0	0	0	0	100%	
China, Jilin	Prov. Lab	9	0	0	0	9	0	0	100%	0%		Prov. Lab/CCDC	0	-	-	-	-	-	-	-	-	-	-	-	-	-	-
China, Neimongol	Prov. Lab	7	0	0	1	6	0	0	100%	7%		Prov. Lab/CCDC	0	-	-	-	-	-	-	-	-	-	-	-	-	-	-
China, Ningxia	Prov. Lab	3	0	0	0	3	0	0	100%	0%		Prov. Lab/CCDC	0	-	-	-	-	-	-	-	-	-	-	-	-	-	-
China, Shaanxi	Prov. Lab	14	0	0	1	11	0	2	58%	8%		Prov. Lab/CCDC	1	0	0	0	0	0	0	1	0	0	0	0	0	0	0%
China, Shandong	Prov. Lab	55	1	0	1	53	0	0	78%	1%		Prov. Lab/CCDC	3	0	1	0	0	0	0	2	0	0	0	0	0	100%	
China, Shanghai	Prov. Lab	8	0	0	0	8	0	0	100%	0%		Prov. Lab/CCDC	0	-	-	-	-	-	-	-	-	-	-	-	-	-	-
China, Shanxi	Prov. Lab	22	0	0	0	21	0	1	90%	0%		Prov. Lab/CCDC	0	-	-	-	-	-	-	-	-	-	-	-	-	-	-
China, Sichuan	Prov. Lab	35	0	0	4	28	0	3	73%	8%		Prov. Lab/CCDC	0	-	-	-	-	-	-	-	-	-	-	-	-	-	-
China, Tianjin	Prov. Lab	10	0	0	0	10	0	0	100%	0%		Prov. Lab/CCDC	0	-	-	-	-	-	-	-	-	-	-	-	-	-	-
China, Xinjiang	Prov. Lab	17	0	0	0	16	0	1	100%	0%		Prov. Lab/CCDC	6	0	4	0	0	0	0	2	0	0	0	0	0	100%	
China, Yunnan	Prov. Lab	35	0	0	0	24	0	11	96%	0%		Prov. Lab/CCDC	0	-	-	-	-	-	-	-	-	-	-	-	-	-	-
China, Zhejiang	Prov. Lab	22	0	0	0	22	0	0	100%	0%		Prov. Lab/CCDC	0	-	-	-	-	-	-	-	-	-	-	-	-	-	-
China, Hainan	Prov. Lab	2	0	0	1	1	0	0	100%	25%		CCDC	0	-	-	-	-	-	-	-	-	-	-	-	-	-	-
China, Liaoning	Prov. Lab	11	0	0	0	9	0	2	100%	0%		CCDC	0	-	-	-	-	-	-	-	-	-	-	-	-	-	-
China, Qinghai	Prov. Lab	4	0	0	0	1	0	3	100%	0%		CCDC	0	-	-	-	-	-	-	-	-	-	-	-	-	-	-
China, Tibet	Prov. Lab	0	-	-	-	-	-	-	-	-		CCDC	0	-	-	-	-	-	-	-	-	-	-	-	-	-	-
China, Hong Kong SAR	PHLC	0	-	-	-	-	-	-	-	-	10-Apr-17	PHLC	0	-	-	-	-	-	-	-	-	-	-	-	-	-	-
China, Macao SAR	PHLC	0	-	-	-	-	-	-	-	-	10-Apr-17	PHLC	0	-	-	-	-	-	-	-	-	-	-	-	-	-	-
Japan	NIID	-	-	-	-	-	-	-	-	-		NIID	-	-	-	-	-	-	-	-	-	-	-	-	-	-	-
Lao People's Democratic Republic	NIID	28	0	0	3	25	0	0	100%	11%	04-Apr-17	NIID	0	-	-	-	-	-	-	-	-	-	-	-	-	-	-
Malaysia	JMR	23	0	0	1	22	0	0	100%	5%	13-Feb-17	JMR	0	-	-	-	-	-	-	-	-	-	-	-	-	-	-
Mongolia	PHI	2	0	0	0	2	0	0	100%	0%	10-Apr-17	NIID	0	-	-	-	-	-	-	-	-	-	-	-	-	-	-
New Zealand	IESR	2	0	0	0	2	0	0	100%	0%	10-Apr-17	IESR	0	-	-	-	-	-	-	-	-	-	-	-	-	-	-
Papua New Guinea	VIDRL	2	0	0	2	0	0	0	100%	67%	07-Apr-17	VIDRL	0	-	-	-	-	-	-	-	-	-	-	-	-	-	-
Philippines	RITM	116	0	0	5	95	16	0	99%	4%	11-Apr-17	RITM	0	-	-	-	-	-	-	-	-	-	-	-	-	-	-
Republic of Korea	NIH	5	0	0	0	4	1	0	100%	0%	27-Feb-17	NIH	0	-	-	-	-	-	-	-	-	-	-	-	-	-	-
Singapore	SGH	1	0	0	0	1	0	0	100%	0%	13-Apr-17	SGH	0	-	-	-	-	-	-	-	-	-	-	-	-	-	-
Viet Nam (North)	NIHE	26	0	0	2	19	5	0	98%	10%	12-Apr-17	NIHE	0	-	-	-	-	-	-	-	-	-	-	-	-	-	-
Viet Nam (South)	PI	26	0	0	1	19	6	0	100%	5%	05-Apr-17	PI	0	-	-	-	-	-	-	-	-	-	-	-	-	-	-
Pacific island countries and areas	VIDRL	4	0	0	2	2	0	0	100%	50%	07-Apr-17	VIDRL	0	-	-	-	-	-	-	-	-	-	-	-	-	-	-
<b>Total</b>		<b>944</b>	<b>7</b>	<b>0</b>	<b>36</b>	<b>830</b>	<b>29</b>	<b>42</b>	<b>91%</b>	<b>3%</b>			<b>26</b>	<b>0</b>	<b>10</b>	<b>0</b>	<b>0</b>	<b>0</b>	<b>0</b>	<b>16</b>	<b>0</b>	<b>0</b>	<b>0</b>	<b>0</b>	<b>0</b>	<b>91%</b>	

1. CCDC (Chinese Center for Disease Control and Prevention, China); IESR (Institute of Environmental Science and Research, New Zealand); JMR (Institute of Medical Research, Malaysia); NIH (National Institute of Health, Republic of Korea); NIHE (National Institute of Hygiene and Epidemiology, Ha Noi, Viet Nam); NIID (National Institute of Infectious Diseases, Japan); PHI (Public Health Institute, Mongolia); PHLC (Public Health Laboratory Center, China, Hong Kong SAR); PI (Pasteur Institute, Ho Chi Minh, Viet Nam); RITM (Research Institute for Tropical Medicine, Philippines); SGH (Singapore General Hospital); VIDRL (Victorian Infectious Diseases Reference Laboratory, Australia)

2. NPEV growing in L20B cells

Table 3. Laboratory confirmation of polio isolates from environmental samples in 2016–2017<sup>1</sup>

Country/area	Intratyptic differentiation lab <sup>2</sup>	2016													2017														
		Total number of samples processed	Total number of samples with polio isolates	Polio isolates									NPEV	Pending ITD	Discordant pending sequencing	Total number of samples processed	Total number of samples with polio isolates	Polio isolates									NPEV	Pending ITD	Discordant pending sequencing
				Type 1			Type 2			Type 3								Type 1			Type 2			Type 3					
				Wild	Sabin	VDPV	Wild	Sabin	VDPV	Wild	Sabin	VDPV						Wild	Sabin	VDPV	Wild	Sabin	VDPV	Wild	Sabin	VDPV			
Australia	VIDRL	0	-	-	-	-	-	-	-	-	-	-	-	-	-	0	-	-	-	-	-	-	-	-	-	-	-	-	
China (total)		345	171	0	179	0	0	174	0	0	507	0	229	0	0	30	19	0	19	0	0	0	0	0	93	0	44	0	0
China, Fujian	Prov. Lab/CCDC	60	12	0	3	0	0	1	0	0	11	0	42	0	0	0	0	-	-	-	-	-	-	-	-	-	0	0	0
China, Gansu	Prov. Lab/CCDC	13	8	0	5	0	0	5	0	0	13	0	2	0	0	3	1	0	1	0	0	0	0	0	7	0	0	0	0
China, Guangdong	Prov. Lab/CCDC	48	35	0	19	0	0	4	0	0	62	0	39	0	0	8	6	0	2	0	0	0	0	0	11	0	8	0	0
China, Guangxi	Prov. Lab/CCDC	36	13	0	1	0	0	4	0	0	52	0	23	0	0	8	3	0	2	0	0	0	0	0	7	0	8	0	0
China, Heilongjiang	Prov. Lab/CCDC	45	21	0	0	0	0	5	0	0	46	0	32	0	0	0	0	-	-	-	-	-	-	-	-	-	0	0	0
China, Shandong	Prov. Lab/CCDC	45	28	0	25	0	0	15	0	0	42	0	40	0	0	5	3	0	3	0	0	0	0	0	12	0	14	0	0
China, Shanghai	Prov. Lab/CCDC	24	18	0	17	0	0	4	0	0	34	0	18	0	0	0	0	-	-	-	-	-	-	-	-	-	0	0	0
China, Xinjiang	Prov. Lab/CCDC	36	36	0	109	0	0	136	0	0	247	0	25	0	0	6	6	0	11	0	0	0	0	0	56	0	14	0	0
China, Yunnan	Prov. Lab/CCDC	38	0	-	-	-	-	-	-	-	-	-	8	0	0	0	0	-	-	-	-	-	-	-	-	-	0	0	0
Malaysia	IMR	10	0	-	-	-	-	-	-	-	-	-	6	0	0	2	0	-	-	-	-	-	-	-	-	-	0	0	0
<b>Total</b>		<b>355</b>	<b>171</b>	<b>0</b>	<b>179</b>	<b>0</b>	<b>0</b>	<b>174</b>	<b>0</b>	<b>0</b>	<b>507</b>	<b>0</b>	<b>235</b>	<b>0</b>	<b>0</b>	<b>32</b>	<b>19</b>	<b>0</b>	<b>19</b>	<b>0</b>	<b>0</b>	<b>0</b>	<b>0</b>	<b>0</b>	<b>93</b>	<b>0</b>	<b>44</b>	<b>0</b>	<b>0</b>

1. Based on year of collection of sample, if available. Otherwise, based on year of receipt at reference laboratory.

2. CCDC (Chinese Center for Disease Control and Prevention, China); IMR (Institute of Medical Research, Malaysia); VIDRL (Victorian Infectious Diseases Reference Laboratory, Australia)

Table 4. Vaccine-derived poliovirus<sup>1</sup> identified from laboratory testing<sup>2</sup>, 2000–2016

Country/area	2000–2009 <sup>3</sup>	2010	2011	2012	2013	2014	2015	2016
Cambodia	2006 - 1 Total - 2							
China	2009 - 1 Total - 27	aVDPV2 (3 AFP + 1 contact + 1 non-AFP) aVDPV3 (1 AFP + 1 non-AFP)	aVDPV1 (1 AFP) aVDPV2 (2 AFP + 1 contact) cVDPV2 (2 AFP) iVDPV2 (1 AFP + 1 non-AFP) iVDPV3 (1 AFP)	aVDPV1 (1 AFP) aVDPV2 (2 AFP) cVDPV2 (2 AFP + 1 contact) iVDPV2 + iVDPV3 (1 AFP)	aVDPV2 (1 non-AFP) iVDPV2 + iVDPV3 (1 AFP)	aVDPV1 (1 non-AFP) aVDPV2 (2 AFP) iVDPV3 (1 AFP)	aVDPV1 (1 AFP) aVDPV2 (1 AFP) iVDPV2 (1 AFP)	aVDPV3 (1 AFP) <sup>4</sup>
China, Hong Kong SAR	2005 - 3							
Japan	2005 - 1 Total - 2							
Lao People's Democratic Republic	2004 - 3						cVDPV1 (8 AFP + 21 contacts)	cVDPV1 (3 AFP + 4 contacts)
Mongolia	2003 - 1							
Philippines	2001 - 3					aVDPV2 (1 AFP)		
Viet Nam				aVDPV2 (2 AFP)				

1. Prefix letter refers to the VDPV category: "cVDPV" = circulating VDPV, "iVDPV" = immunodeficiency-associated VDPV, "aVDPV" = ambiguous VDPV, "?VDPV" = pending.

Suffix number refers to the poliovirus serotype (types 1, 2 or 3).

2. Source of specimens could be AFP cases, contacts, or non-AFP cases

3. Refers to year of last VDPV case, and aggregate total of VDPV cases for 2000-2009

4. Based on laboratory reporting only; not yet classified by AFP surveillance