

HIGHLIGHTS

Fourth Joint WHO HQ/ROs Planning Meeting for Poliovirus Containment

Third Containment Management Group (CMG) Meeting 21–23 February 2018 - Geneva, Switzerland

The Fourth Joint Planning Meeting for Poliovirus Containment between WHO Headquarters and Regional Offices was organized from 21 to 22 February 2018 following by the Third Containment Management Group (CMG) meeting on 23 February 2018, in Geneva, Switzerland.

The WHO joint planning meeting with HQ/ROs aims to ensure (i) continuous effective global containment coordination, (ii) alignment of strategies, (iii) discussions on implementation status, (iv) identification of gaps and needs, and (v) agreement on next steps.



The CMG advises the Strategic Committee of GPEI regarding the technical support, human resources, and advocacy required to support poliovirus containment component of Objective 3 of the Polio Eradication & Endgame Strategic Plan, 2013–2018.

Great progress has been made in 2017: development of communication documents for containment certification scheme; first meeting of National Authorities for Containment (NACs) with the members of Global Certification Commission (GCC) - containment working group was organized in October 2017; containment indicators for GCC risk assessment were developed; risk-ranking scheme of poliovirus essential facilities based on the Phase I surveys for poliovirus 2 was developed and submitted for endorsement at the next meeting of the polio working group of the Strategic Advisory Group of Experts (SAGE) in April.

More information on containment activities, resources and supporting groups is available at: <http://polioeradication.org/polio-today/preparing-for-a-polio-free-world/containment>.

CONTACT US

Expanded Programme on Immunization
Regional Office for the Western Pacific
World Health Organization
P.O. Box 2932, 1000 Manila, Philippines
Phone: +63 2 5288001
Fax: +63 2 5211036, 5260279
Email: wproepidata@who.int
Web: www.wpro.who.int/immunization

Chart 1. Non-polio AFP rate (per 100 000 persons < 15 years of age), 2015–2017

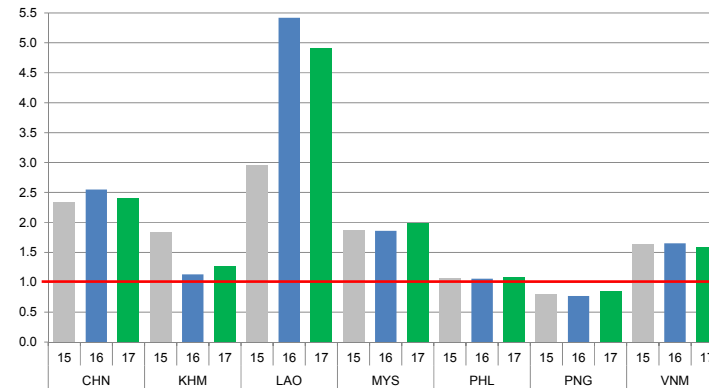


Chart 2. Adequate specimen collection rate, 2015–2017

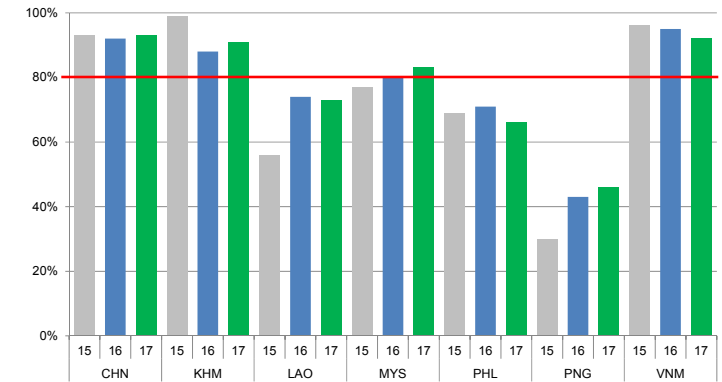


Chart 3. Percentage of reported AFP cases by number of polio vaccination doses, 2017

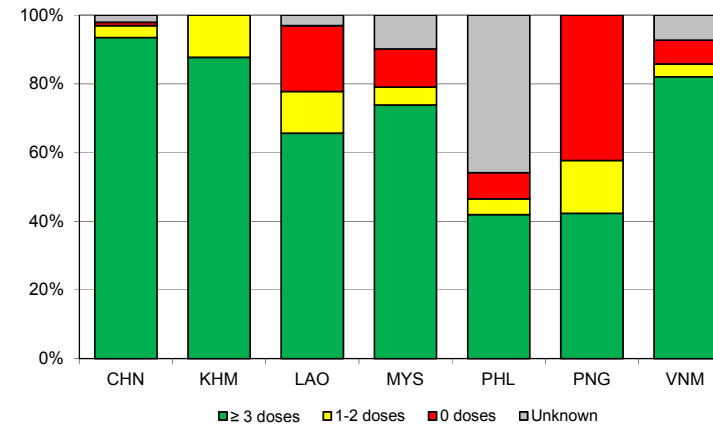
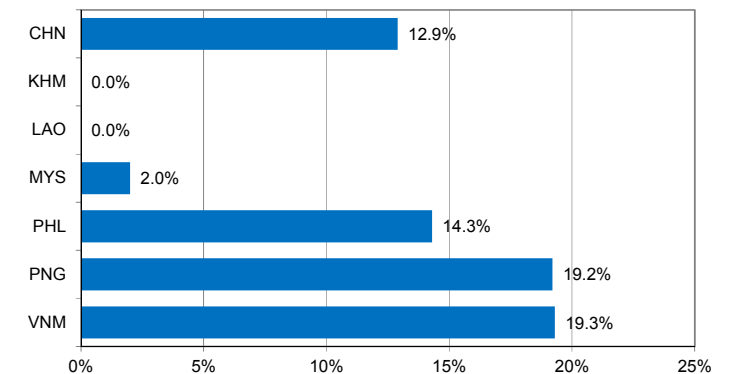


Chart 4. Percentage of reported AFP cases with pending classification > 90 days after onset, 2017



Note: Priority countries were selected for the charts. Official WHO acronyms have been used for abbreviation: CHN (China), KHM (Cambodia), LAO (Lao People's Democratic Republic), MYS (Malaysia), PHL (Philippines), PNG (Papua New Guinea), and VNM (Viet Nam).

Table 1A. Classification of AFP cases with onset in 2017 and key surveillance indicators

Country/area	2016		2017											
	Total reported cases	Annual expected cases <15 years of age	Total reported cases	Classification						Indicators			Latest report date ⁴	Days since last report ⁵
				Confirmed wild poliovirus	Vaccine-derived poliovirus (VDPV)	Polio-compatible	Discarded (Non-polio)	Pending		Non-polio AFP rate	% with adequate specimens ²	% investigated ≤ 2 days of notification ³		
								Total	> 90 days ¹ # (%)					
≥ 1	≥ 80%	≥ 80%	≤ 30											
Australia	62	45	59	0	0	1	57	1	1 (1.7%)	1.31	37%	97%	23-Feb-18	4
Brunei Darussalam	1	1	1	0	0	0	1	0	0 (0.0%)	1.00	0%	100%	09-Jan-18	-
Cambodia	51	45	57	0	0	0	57	0	0 (0.0%)	1.27	91%	95%	07-Feb-18	-
China	5691	2256	5415	0	2	0	4184	1229	696 (12.9%)	2.40	93%	100%	21-Feb-18	6
China, Hong Kong SAR	10	8	15	0	0	0	15	0	0 (0.0%)	1.88	80%	100%	09-Feb-18	-
China, Macao SAR	1	1	2	0	0	0	2	0	0 (0.0%)	2.00	50%	100%	18-Jan-18	-
Japan	-	161	-	-	-	-	-	-	-	-	-	-	-	-
Lao People's Democratic Republic	133	21	103	0	0	0	103	0	0 (0.0%)	4.90	73%	73%	27-Feb-18	-
Malaysia	143	77	153	0	0	0	136	17	3 (2.0%)	1.99	83%	80%	22-Jan-18	36
Mongolia	7	9	6	0	0	0	6	0	0 (0.0%)	0.67	83%	100%	11-Jan-18	-
New Zealand	12	9	13	0	0	0	6	7	6 (46.2%)	1.44	38%	100%	08-Jan-18	50
Papua New Guinea	23	31	26	0	0	0	20	6	5 (19.2%)	0.84	46%	100%	08-Jan-18	50
Philippines	417	400	434	0	0	0	364	70	62 (14.3%)	1.09	66%	97%	19-Jan-18	39
Republic of Korea	70	68	68	0	0	0	61	7	0 (0.0%)	1.00	94%	100%	09-Feb-18	18
Singapore	7	6	7	0	0	0	7	0	0 (0.0%)	1.17	86%	100%	07-Feb-18	-
Viet Nam	382	234	373	0	0	0	270	103	72 (19.3%)	1.59	92%	89%	06-Feb-18	21
Pacific island countries and areas	20	11	16	0	0	0	13	3	1 (6.3%)	1.45	63%	100%	20-Feb-18	7
Total	7030	3383	6748	0	2	1	5302	1443	846 (12.5%)	1.99	90%	98%		

1. Number (%) of reported cases pending classification more than 90 days from date of onset of paralysis to date of last report
2. Percentage of reported cases with two stool specimens collected 24 hours apart and within 14 days of onset of paralysis
3. Percentage of reported cases investigated within two days of notification
4. Report date is fixed as soon as all cases for the year have been classified
5. Countries are expected to submit data at least once per month to WPRO

	Reached or surpass target
	Nearly reached target 0.5-0.99 for non-polio AFP rate; 60-79% for other indicators
	Substantially below target

Table 1B. Classification of AFP cases with onset in 2018 and key surveillance indicators

Country/area	2017		2018											
	Total reported cases	Annual expected cases <15 years of age	Total reported cases	Classification						Indicators			Latest report date	Days since last report ⁵
				Confirmed wild poliovirus	Vaccine-derived poliovirus (VDPV)	Polio-compatible	Discarded (Non-polio)	Pending		Non-polio AFP rate ²	% with adequate specimens ³	% investigated ≤ 2 days of notification ⁴		
								Total	> 90 days ¹ # (%)					
≥ 1	≥ 80%	≥ 80%	≤ 30											
Australia	59	46	6	0	0	0	0	6	2 (33.3%)	0.85	33%	83%	23-Feb-18	4
Brunei Darussalam	1	1	0	-	-	-	-	-	-	-	-	-	09-Jan-18	49
Cambodia	57	44	2	0	0	0	2	0	0 (0.0%)	0.30	0%	50%	07-Feb-18	20
China	5415	2256	371	0	0	0	1	370	0 (0.0%)	1.07	94%	99%	21-Feb-18	6
China, Hong Kong SAR	15	9	0	-	-	-	-	-	-	-	-	-	09-Feb-18	18
China, Macao SAR	2	1	0	-	-	-	-	-	-	-	-	-	14-Feb-18	13
Japan	-	161	-	-	-	-	-	-	-	-	-	-	-	-
Lao People's Democratic Republic	103	21	13	0	0	0	7	6	0 (0.0%)	4.02	85%	54%	27-Feb-18	0
Malaysia	153	77	6	0	0	0	0	6	0 (0.0%)	0.51	100%	33%	07-Feb-18	20
Mongolia	6	9	1	0	0	0	0	1	0 (0.0%)	0.72	100%	100%	09-Feb-18	18
New Zealand	13	9	0	-	-	-	-	-	-	-	-	-	08-Jan-18	50
Papua New Guinea	26	34	0	-	-	-	-	-	-	-	-	-	08-Jan-18	50
Philippines	434	338	0	-	-	-	-	-	-	-	-	-	19-Jan-18	39
Republic of Korea	68	67	0	-	-	-	-	-	-	-	-	-	09-Feb-18	18
Singapore	7	6	0	-	-	-	-	-	-	-	-	-	07-Feb-18	20
Viet Nam	373	234	1	0	0	0	0	1	0 (0.0%)	0.03	0%	0%	06-Feb-18	21
Pacific island countries and areas	16	11	0	-	-	-	-	-	-	-	-	-	20-Feb-18	7
Total	6748	3324	400	0	0	0	10	390	2 (0.5%)	0.78	92%	96%		

1. Number (%) of reported cases pending classification more than 90 days from date of onset of paralysis to date of last report
2. Annualized non-polio AFP rate per 100 000 population under 15 years of age
3. Percentage of reported cases with two stool specimens collected 24 hours apart and within 14 days of onset of paralysis
4. Percentage of reported cases investigated within two days of notification
5. Countries are expected to submit data at least once per month to WPRO

	Reached or surpass target
	Nearly reached target 0.5-0.99 for non-polio AFP rate; 60-79% for other indicators
	Substantially below target

Table 2A. Laboratory investigation of stool samples from AFP cases with onset in 2017 and key laboratory indicators

Country/area	Poli laboratory	Total no. of AFP cases with specimens	Results of virus isolation for AFP cases									Intratyptic differentiation/ Sequencing laboratory ¹	No. of isolates received	Results of intratyptic differentiation (ITD)/sequencing for virus isolates																				
			L20B positive	L20B positive + NPEV	NPEV only	Negative	Pending ≤ 14 days	Pending > 14 days	% results reported ≤ 14 days	% specimens positive for NPEV	Latest report date			Type 1			Type 2			Type 3			NPEV ²	Pending ITD	Discordant pending sequencing	% ITD results reported ≤ 7 days of receipt								
														Wild	Sabin	VDPV	Wild	Sabin	VDPV	Wild	Sabin	VDPV												
Australia	VIDRL	44	0	0	4	40	0	0	95%	10%	08-Feb-18	VIDRL	0	-	-	-	-	-	-	-	-	-	-	-	-	-	-	-	-	-	-	-		
Brunei Darussalam	VIDRL	0	-	-	-	-	-	-	-	-	08-Feb-18	VIDRL	0	-	-	-	-	-	-	-	-	-	-	-	-	-	-	-	-	-	-	-		
Cambodia	NIID	57	0	0	6	51	0	0	96%	9%	26-Jan-18	NIID	0	-	-	-	-	-	-	-	-	-	-	-	-	-	-	-	-	-	-	-		
China (total)		5341	48	0	348	4904	0	41	96%	6%	21-Feb-18		125	0	40	0	0	0	0	0	64	13	8	0	0	0	0	0	0	0	0	99%		
China, Anhui	Prov. Lab	322	3	0	14	303	0	2	100%	3%		Prov. Lab/CCDC	8	0	6	0	0	0	0	0	2	0	0	0	0	0	0	0	0	0	0	100%		
China, Beijing	Prov. Lab	34	1	0	0	33	0	0	97%	0%		Prov. Lab/CCDC	1	0	0	0	0	0	0	0	1	0	0	0	0	0	0	0	0	0	0	100%		
China, Chongqing	Prov. Lab	80	0	0	2	78	0	0	93%	2%		Prov. Lab/CCDC	4	0	0	0	0	0	0	0	2	0	2	0	0	0	0	0	0	0	0	100%		
China, Fujian	Prov. Lab	179	1	0	11	167	0	0	95%	5%		Prov. Lab/CCDC	1	0	0	0	0	0	0	0	1	0	0	0	0	0	0	0	0	0	0	100%		
China, Gansu	Prov. Lab	108	0	0	4	103	0	1	99%	3%		Prov. Lab/CCDC	2	0	0	0	0	0	0	0	0	0	2	0	0	0	0	0	0	0	0	100%		
China, Guangdong	Prov. Lab	400	4	0	33	363	0	0	94%	7%		Prov. Lab/CCDC	12	0	6	0	0	0	0	0	6	0	0	0	0	0	0	0	0	0	0	0	100%	
China, Guangxi	Prov. Lab	269	5	0	33	231	0	0	97%	11%		Prov. Lab/CCDC	10	0	4	0	0	0	0	0	6	0	0	0	0	0	0	0	0	0	0	0	100%	
China, Guizhou	Prov. Lab	201	0	0	15	186	0	0	97%	7%		Prov. Lab/CCDC	0	-	-	-	-	-	-	-	-	-	-	-	-	-	-	-	-	-	-	-		
China, Hebei	Prov. Lab	282	4	0	28	250	0	0	99%	8%		Prov. Lab/CCDC	7	0	4	0	0	0	0	0	3	0	0	0	0	0	0	0	0	0	0	0	100%	
China, Heilongjiang	Prov. Lab	106	1	0	5	100	0	0	100%	5%		Prov. Lab/CCDC	1	0	0	0	0	0	0	0	1	0	0	0	0	0	0	0	0	0	0	0	100%	
China, Henan	Prov. Lab	517	8	0	57	449	0	3	91%	9%		Prov. Lab/CCDC	21	0	2	0	0	0	0	0	14	1	4	0	0	0	0	0	0	0	0	0	100%	
China, Hubei	Prov. Lab	195	0	0	21	170	0	4	97%	10%		Prov. Lab/CCDC	0	-	-	-	-	-	-	-	-	-	-	-	-	-	-	-	-	-	-	-		
China, Hunan	Prov. Lab	264	1	0	18	243	0	2	99%	6%		Prov. Lab/CCDC	4	0	3	0	0	0	0	0	1	0	0	0	0	0	0	0	0	0	0	0	100%	
China, Jiangsu	Prov. Lab	229	4	0	3	215	0	7	100%	1%		Prov. Lab/CCDC	8	0	2	0	0	0	0	0	6	0	0	0	0	0	0	0	0	0	0	0	100%	
China, Jiangxi	Prov. Lab	163	1	0	16	146	0	0	95%	8%		Prov. Lab/CCDC	3	0	0	0	0	0	0	0	3	0	0	0	0	0	0	0	0	0	0	0	100%	
China, Jilin	Prov. Lab	60	1	0	6	53	0	0	100%	8%		Prov. Lab/CCDC	4	0	2	0	0	0	0	0	2	0	0	0	0	0	0	0	0	0	0	0	50%	
China, Neimongol	Prov. Lab	102	2	0	1	99	0	0	99%	0%		Prov. Lab/CCDC	5	0	3	0	0	0	0	0	2	0	0	0	0	0	0	0	0	0	0	0	100%	
China, Ningxia	Prov. Lab	23	0	0	2	21	0	0	96%	9%		Prov. Lab/CCDC	0	-	-	-	-	-	-	-	-	-	-	-	-	-	-	-	-	-	-	-		
China, Shaanxi	Prov. Lab	111	1	0	2	103	0	5	92%	2%		Prov. Lab/CCDC	1	0	0	0	0	0	0	0	1	0	0	0	0	0	0	0	0	0	0	0	100%	
China, Shandong	Prov. Lab	364	5	0	9	349	0	1	95%	2%		Prov. Lab/CCDC	20	0	1	0	0	0	0	0	7	12	0	0	0	0	0	0	0	0	0	0	100%	
China, Shanghai	Prov. Lab	37	0	0	0	37	0	0	100%	0%		Prov. Lab/CCDC	0	-	-	-	-	-	-	-	-	-	-	-	-	-	-	-	-	-	-	-		
China, Shanxi	Prov. Lab	176	0	0	6	170	0	0	94%	3%		Prov. Lab/CCDC	0	-	-	-	-	-	-	-	-	-	-	-	-	-	-	-	-	-	-	-		
China, Sichuan	Prov. Lab	368	0	0	21	339	0	8	96%	5%		Prov. Lab/CCDC	2	0	2	0	0	0	0	0	0	0	0	0	0	0	0	0	0	0	0	0	100%	
China, Tianjin	Prov. Lab	30	0	0	0	30	0	0	98%	0%		Prov. Lab/CCDC	0	-	-	-	-	-	-	-	-	-	-	-	-	-	-	-	-	-	-	-		
China, Xinjiang	Prov. Lab	147	4	0	10	132	0	1	93%	7%		Prov. Lab/CCDC	8	0	5	0	0	0	0	0	3	0	0	0	0	0	0	0	0	0	0	0	100%	
China, Yunnan	Prov. Lab	247	1	0	17	227	0	2	93%	6%		Prov. Lab/CCDC	1	0	0	0	0	0	0	0	1	0	0	0	0	0	0	0	0	0	0	0	100%	
China, Zhejiang	Prov. Lab	173	1	0	7	165	0	0	99%	3%		Prov. Lab/CCDC	2	0	0	0	0	0	0	0	2	0	0	0	0	0	0	0	0	0	0	0	100%	
China, Hainan	Prov. Lab	29	0	0	3	26	0	0	93%	9%		CCDC	0	-	-	-	-	-	-	-	-	-	-	-	-	-	-	-	-	-	-	-		
China, Liaoning	Prov. Lab	96	0	0	3	88	0	5	99%	2%		CCDC	0	-	-	-	-	-	-	-	-	-	-	-	-	-	-	-	-	-	-	-		
China, Qinghai	Prov. Lab	21	0	0	1	20	0	0	100%	5%		CCDC	0	-	-	-	-	-	-	-	-	-	-	-	-	-	-	-	-	-	-	-		
China, Tibet	Prov. Lab	8	0	0	0	8	0	0	63%	0%		CCDC	0	-	-	-	-	-	-	-	-	-	-	-	-	-	-	-	-	-	-	-		
China, Hong Kong SAR	PHLC	15	0	0	0	15	0	0	98%	0%	22-Jan-18	PHLC	0	-	-	-	-	-	-	-	-	-	-	-	-	-	-	-	-	-	-	-		
China, Macao SAR	PHLC	2	0	0	0	2	0	0	100%	0%	22-Jan-18	PHLC	0	-	-	-	-	-	-	-	-	-	-	-	-	-	-	-	-	-	-	-	-	
Japan	NIID	-	-	-	-	-	-	-	-	-	-	NIID	-	-	-	-	-	-	-	-	-	-	-	-	-	-	-	-	-	-	-	-		
Lao People's Democratic Republic	NIID	144	1	1	15	127	0	0	96%	10%	29-Jan-18	NIID	4	0	0	0	0	0	0	2	0	2	0	0	0	0	0	0	0	0	0	0	100%	
Malaysia	IMR	182	0	0	9	173	0	0	98%	5%	09-Feb-18	IMR	0	-	-	-	-	-	-	-	-	-	-	-	-	-	-	-	-	-	-	-	-	
Mongolia	PHI	7	0	0	0	7	0	0	100%	0%	27-Feb-18	NIID	0	-	-	-	-	-	-	-	-	-	-	-	-	-	-	-	-	-	-	-	-	
New Zealand	IESR	9	0	0	0	9	0	0	100%	0%	23-Jan-18	IESR	0	-	-	-	-	-	-	-	-	-	-	-	-	-	-	-	-	-	-	-	-	
Papua New Guinea	VIDRL	26	0	0	8	18	0	0	100%	22%	08-Feb-18	VIDRL	0	-	-	-	-	-	-	-	-	-	-	-	-	-	-	-	-	-	-	-	-	
Philippines	RITM	463	6	0	26	425	0	6	98%	4%	19-Feb-18	RITM	15	0	4	0	0	0	0	0	11	0	0	0	0	0	0	0	0	0	0	0	0	100%
Republic of Korea	NIH	68	0	0	4	64	0	0	97%	4%	09-Feb-18	NIH	0	-	-	-	-	-	-	-	-	-	-	-	-	-	-	-	-	-	-	-	-	
Singapore	SGH	7	0	0	0	7	0	0	100%	0%	15-Feb-18	SGH	0	-	-	-	-	-	-	-	-	-	-	-	-	-	-	-	-	-	-	-	-	
Viet Nam (North)	NIHE	177	1	0	29	147	0	0	100%	14%	25-Jan-18	NIHE	2	0	0	0	0	0	0	0	2	0	0	0	0	0	0	0	0	0	0	0	100%	
Viet Nam (South)	PI	194	0	0	34	160	0	0	100%	18%	21-Feb-18	PI	0	-	-	-	-	-	-	-	-	-	-	-	-	-	-	-	-	-	-	-	-	
Pacific island countries and areas	VIDRL																																	

Table 2B. Laboratory investigation of stool samples from AFP cases with onset in 2018 and key laboratory indicators

Country/area	Polio laboratory	Total no. of AFP cases with specimens	Results of virus isolation for AFP cases										Intratyptic differentiation/ Sequencing laboratory ¹	No. of isolates received	Results of intratyptic differentiation (ITD)/sequencing for virus isolates																			
			L20B positive	L20B positive + NPEV	NPEV only	Negative	Pending ≤ 14 days	Pending > 14 days	% results reported ≤ 14 days	% specimens positive for NPEV	Latest report date	Type 1			Type 2			Type 3			NPEV ²	Pending ITD	Discordant pending sequencing	% ITD results reported ≤ 7 days of receipt										
												Wild			Sabin	VDPV	Wild	Sabin	VDPV	Wild					Sabin	VDPV								
												≥ 80%																						
Australia	VIDRL	5	0	0	0	3	2	0	100%	0%	08-Feb-18	VIDRL	0	-	-	-	-	-	-	-	-	-	-	-	-	-	-	-	-	-	-	-	-	-
Brunei Darussalam	VIDRL	0	-	-	-	-	-	-	-	-	08-Feb-18	VIDRL	0	-	-	-	-	-	-	-	-	-	-	-	-	-	-	-	-	-	-	-	-	-
Cambodia	NIID	2	0	0	1	1	0	0	100%	25%	07-Feb-18	NIID	0	-	-	-	-	-	-	-	-	-	-	-	-	-	-	-	-	-	-	-	-	-
China (total)		361	2	0	8	281	0	70	99%	2%	21-Feb-18		5	0	2	0	0	0	0	0	3	0	0	0	0	0	0	0	0	0	0	0	0	100%
China, Anhui	Prov. Lab	14	0	0	0	14	0	0	100%	0%		Prov. Lab/CCDC	0	-	-	-	-	-	-	-	-	-	-	-	-	-	-	-	-	-	-	-	-	-
China, Beijing	Prov. Lab	2	0	0	0	2	0	0	100%	0%		Prov. Lab/CCDC	0	-	-	-	-	-	-	-	-	-	-	-	-	-	-	-	-	-	-	-	-	-
China, Chongqing	Prov. Lab	6	0	0	0	1	0	5	100%	0%		Prov. Lab/CCDC	0	-	-	-	-	-	-	-	-	-	-	-	-	-	-	-	-	-	-	-	-	-
China, Fujian	Prov. Lab	19	1	0	0	9	0	9	100%	0%		Prov. Lab/CCDC	1	0	0	0	0	0	0	0	1	0	0	0	0	0	0	0	0	0	0	0	0	100%
China, Gansu	Prov. Lab	4	0	0	0	3	0	1	100%	0%		Prov. Lab/CCDC	0	-	-	-	-	-	-	-	-	-	-	-	-	-	-	-	-	-	-	-	-	-
China, Guangdong	Prov. Lab	33	0	0	0	33	0	0	100%	0%		Prov. Lab/CCDC	0	-	-	-	-	-	-	-	-	-	-	-	-	-	-	-	-	-	-	-	-	-
China, Guangxi	Prov. Lab	15	0	0	0	15	0	0	100%	0%		Prov. Lab/CCDC	0	-	-	-	-	-	-	-	-	-	-	-	-	-	-	-	-	-	-	-	-	-
China, Guizhou	Prov. Lab	18	0	0	0	8	0	10	100%	0%		Prov. Lab/CCDC	0	-	-	-	-	-	-	-	-	-	-	-	-	-	-	-	-	-	-	-	-	-
China, Hebei	Prov. Lab	22	0	0	3	18	0	1	100%	12%		Prov. Lab/CCDC	0	-	-	-	-	-	-	-	-	-	-	-	-	-	-	-	-	-	-	-	-	-
China, Heilongjiang	Prov. Lab	6	0	0	1	4	0	1	100%	20%		Prov. Lab/CCDC	0	-	-	-	-	-	-	-	-	-	-	-	-	-	-	-	-	-	-	-	-	-
China, Henan	Prov. Lab	36	0	0	1	34	0	1	100%	1%		Prov. Lab/CCDC	0	-	-	-	-	-	-	-	-	-	-	-	-	-	-	-	-	-	-	-	-	-
China, Hubei	Prov. Lab	10	0	0	0	8	0	2	100%	0%		Prov. Lab/CCDC	0	-	-	-	-	-	-	-	-	-	-	-	-	-	-	-	-	-	-	-	-	-
China, Hunan	Prov. Lab	8	0	0	1	7	0	0	100%	6%		Prov. Lab/CCDC	0	-	-	-	-	-	-	-	-	-	-	-	-	-	-	-	-	-	-	-	-	-
China, Jiangsu	Prov. Lab	5	0	0	0	4	0	1	100%	0%		Prov. Lab/CCDC	0	-	-	-	-	-	-	-	-	-	-	-	-	-	-	-	-	-	-	-	-	-
China, Jiangxi	Prov. Lab	12	0	0	0	7	0	5	93%	0%		Prov. Lab/CCDC	0	-	-	-	-	-	-	-	-	-	-	-	-	-	-	-	-	-	-	-	-	-
China, Jilin	Prov. Lab	6	1	0	0	5	0	0	100%	0%		Prov. Lab/CCDC	4	0	2	0	0	0	0	0	2	0	0	0	0	0	0	0	0	0	0	0	0	100%
China, Neimongol	Prov. Lab	6	0	0	0	4	0	2	100%	0%		Prov. Lab/CCDC	0	-	-	-	-	-	-	-	-	-	-	-	-	-	-	-	-	-	-	-	-	-
China, Ningxia	Prov. Lab	3	0	0	0	1	0	2	100%	0%		Prov. Lab/CCDC	0	-	-	-	-	-	-	-	-	-	-	-	-	-	-	-	-	-	-	-	-	-
China, Shaanxi	Prov. Lab	11	0	0	0	9	0	2	100%	0%		Prov. Lab/CCDC	0	-	-	-	-	-	-	-	-	-	-	-	-	-	-	-	-	-	-	-	-	-
China, Shandong	Prov. Lab	21	0	0	0	17	0	4	100%	0%		Prov. Lab/CCDC	0	-	-	-	-	-	-	-	-	-	-	-	-	-	-	-	-	-	-	-	-	-
China, Shanghai	Prov. Lab	2	0	0	0	2	0	0	100%	0%		Prov. Lab/CCDC	0	-	-	-	-	-	-	-	-	-	-	-	-	-	-	-	-	-	-	-	-	-
China, Shanxi	Prov. Lab	16	0	0	0	15	0	1	93%	0%		Prov. Lab/CCDC	0	-	-	-	-	-	-	-	-	-	-	-	-	-	-	-	-	-	-	-	-	-
China, Sichuan	Prov. Lab	32	0	0	1	24	0	7	98%	2%		Prov. Lab/CCDC	0	-	-	-	-	-	-	-	-	-	-	-	-	-	-	-	-	-	-	-	-	-
China, Tianjin	Prov. Lab	1	0	0	0	1	0	0	100%	0%		Prov. Lab/CCDC	0	-	-	-	-	-	-	-	-	-	-	-	-	-	-	-	-	-	-	-	-	-
China, Xinjiang	Prov. Lab	3	0	0	1	2	0	0	67%	33%		Prov. Lab/CCDC	0	-	-	-	-	-	-	-	-	-	-	-	-	-	-	-	-	-	-	-	-	-
China, Yunnan	Prov. Lab	27	0	0	0	14	0	13	93%	0%		Prov. Lab/CCDC	0	-	-	-	-	-	-	-	-	-	-	-	-	-	-	-	-	-	-	-	-	-
China, Zhejiang	Prov. Lab	12	0	0	0	12	0	0	100%	0%		Prov. Lab/CCDC	0	-	-	-	-	-	-	-	-	-	-	-	-	-	-	-	-	-	-	-	-	-
China, Hainan	Prov. Lab	0	-	-	-	-	-	-	-	-		CCDC	0	-	-	-	-	-	-	-	-	-	-	-	-	-	-	-	-	-	-	-	-	-
China, Liaoning	Prov. Lab	7	0	0	0	5	0	2	100%	0%		CCDC	0	-	-	-	-	-	-	-	-	-	-	-	-	-	-	-	-	-	-	-	-	-
China, Qinghai	Prov. Lab	3	0	0	0	3	0	0	100%	0%		CCDC	0	-	-	-	-	-	-	-	-	-	-	-	-	-	-	-	-	-	-	-	-	-
China, Tibet	Prov. Lab	1	0	0	0	0	0	1	-	-		CCDC	0	-	-	-	-	-	-	-	-	-	-	-	-	-	-	-	-	-	-	-	-	-
China, Hong Kong SAR	PHLC	0	-	-	-	-	-	-	-	-	15-Feb-18	PHLC	0	-	-	-	-	-	-	-	-	-	-	-	-	-	-	-	-	-	-	-	-	-
China, Macao SAR	PHLC	1	0	0	0	0	1	0	-	-	15-Feb-18	PHLC	0	-	-	-	-	-	-	-	-	-	-	-	-	-	-	-	-	-	-	-	-	-
Japan	NIID	0	-	-	-	-	-	-	-	-	-	NIID	-	-	-	-	-	-	-	-	-	-	-	-	-	-	-	-	-	-	-	-	-	-
Lao People's Democratic Republic	NIID	11	0	0	2	9	0	0	100%	14%	24-Feb-18	NIID	0	-	-	-	-	-	-	-	-	-	-	-	-	-	-	-	-	-	-	-	-	-
Malaysia	IMR	7	0	0	0	7	0	0	100%	0%	09-Feb-18	IMR	0	-	-	-	-	-	-	-	-	-	-	-	-	-	-	-	-	-	-	-	-	-
Mongolia	PHI	1	0	0	1	0	0	0	100%	100%	27-Feb-18	NIID	0	-	-	-	-	-	-	-	-	-	-	-	-	-	-	-	-	-	-	-	-	-
New Zealand	IESR	0	-	-	-	-	-	-	-	-	26-Feb-18	IESR	0	-	-	-	-	-	-	-	-	-	-	-	-	-	-	-	-	-	-	-	-	-
Papua New Guinea	VIDRL	0	-	-	-	-	-	-	-	-	08-Feb-18	VIDRL	0	-	-	-	-	-	-	-	-	-	-	-	-	-	-	-	-	-	-	-	-	-
Philippines	RITM	30	0	0	0	22	8	0	100%	0%	19-Feb-18	RITM	0	-	-	-	-	-	-	-	-	-	-	-	-	-	-	-	-	-	-	-	-	-
Republic of Korea	NIH	0	-	-	-	-	-	-	-	-	09-Feb-18	NIH	0	-	-	-	-	-	-	-	-	-	-	-	-	-	-	-	-	-	-	-	-	-
Singapore	SGH	0	-	-	-	-	-	-	-	-	23-Feb-18	SGH	0	-	-	-	-	-	-	-	-	-	-	-	-	-	-	-	-	-	-	-	-	-
Viet Nam (North)	NIHE	3	0	0	0	0	3	0	-	-	27-Feb-18	NIHE	0	-	-	-	-	-	-	-	-	-	-	-	-	-	-	-	-	-	-	-	-	
Viet Nam (South)	PI	6	0	0	0	2	4	0	100%	0%	14-Feb-18	PI	0	-	-	-	-	-	-	-	-	-	-	-	-	-	-	-	-	-	-	-	-	
Pacific island countries and areas	VIDRL	0	-	-	-	-	-	-	-	-	08-Feb-18	VIDRL	0	-	-	-	-	-	-	-	-	-	-	-	-	-	-	-	-	-	-	-	-	-
Total		427</																																

Table 3. Laboratory confirmation of polio isolates from environmental samples in 2017–2018 ¹

Country/area	Intratyptic differentiation lab ²	2017													2018														
		Total number of samples processed	Total number of samples with polio isolates	Polio isolates									NPEV	Pending ITD	Discordant pending sequencing	Total number of samples processed	Total number of samples with polio isolates	Polio isolates									NPEV	Pending ITD	Discordant pending sequencing
				Type 1			Type 2			Type 3								Type 1			Type 2			Type 3					
				Wild	Sabin	VDPV	Wild	Sabin	VDPV	Wild	Sabin	VDPV						Wild	Sabin	VDPV	Wild	Sabin	VDPV	Wild	Sabin	VDPV			
Australia	VIDRL	6	2	0	0	0	0	0	1	0	1	0	4	0	0	5	1	0	1	0	0	0	0	0	0	0	2	0	0
China (total)		313	182	0	212	0	0	0	0	0	633	0	1108	0	0	0	-	-	-	-	-	-	-	-	-	-	-	-	-
China, Fujian	Prov. Lab/CCDC	53	22	0	8	0	0	0	0	0	42	0	331	0	0	0	-	-	-	-	-	-	-	-	-	-	-	-	-
China, Gansu	Prov. Lab/CCDC	10	8	0	10	0	0	0	0	0	27	0	12	0	0	0	-	-	-	-	-	-	-	-	-	-	-	-	-
China, Guangdong	Prov. Lab/CCDC	48	39	0	18	0	0	0	0	0	87	0	108	0	0	0	-	-	-	-	-	-	-	-	-	-	-	-	-
China, Guangxi	Prov. Lab/CCDC	36	20	0	22	0	0	0	0	0	36	0	94	0	0	0	-	-	-	-	-	-	-	-	-	-	-	-	-
China, Heilongjiang	Prov. Lab/CCDC	42	16	0	12	0	0	0	0	0	32	0	110	0	0	0	-	-	-	-	-	-	-	-	-	-	-	-	-
China, Shandong	Prov. Lab/CCDC	45	27	0	18	0	0	0	0	0	88	0	258	0	0	0	-	-	-	-	-	-	-	-	-	-	-	-	-
China, Shanghai	Prov. Lab/CCDC	22	16	0	16	0	0	0	0	0	54	0	45	0	0	0	-	-	-	-	-	-	-	-	-	-	-	-	-
China, Xinjiang	Prov. Lab/CCDC	36	34	0	108	0	0	0	0	0	267	0	115	0	0	0	-	-	-	-	-	-	-	-	-	-	-	-	-
China, Yunnan	Prov. Lab/CCDC	21	0	-	-	-	-	-	-	-	-	-	35	0	0	0	-	-	-	-	-	-	-	-	-	-	-	-	-
Malaysia	IMR	24	0	-	-	-	-	-	-	-	-	-	22	0	0	0	-	-	-	-	-	-	-	-	-	-	-	-	-
Philippines	RITM	40	8	0	1	0	0	0	0	0	7	0	21	0	0	5	0	0	0	0	0	0	0	0	0	2	0	0	0
Total		383	192	0	213	0	0	0	1	0	641	0	1155	0	0	10	1	0	1	0	0	0	0	0	0	0	4	0	0

1. Based on year of collection of sample, if available. Otherwise, based on year of receipt at reference laboratory.

2. CCDC (Chinese Center for Disease Control and Prevention, China); IMR (Institute of Medical Research, Malaysia); RITM (Research Institute for Tropical Medicine, Philippines); VIDRL (Victorian Infectious Diseases Reference Laboratory, Australia)

Table 4. Vaccine-derived poliovirus¹ identified from laboratory testing², 2000–2017

Country/area	2000–2009 ³	2010	2011	2012	2013	2014	2015	2016	2017
Australia									aVDPV2 (1 env)
Cambodia	2006 - 1 Total - 2								
China	2009 - 1 Total - 27	aVDPV2 (3 AFP + 1 contact + 1 non-AFP) aVDPV3 (1 AFP + 1 non-AFP)	aVDPV1 (1 AFP) aVDPV2 (2 AFP + 1 contact) cVDPV2 (2 AFP) iVDPV2 (1 AFP + 1 non-AFP) iVDPV3 (1 AFP)	aVDPV1 (1 AFP) aVDPV2 (2 AFP) cVDPV2 (2 AFP + 1 contact) iVDPV2 + iVDPV3 (1 AFP)	aVDPV2 (1 non-AFP) iVDPV2 + iVDPV3 (1 AFP)	aVDPV1 (1 non-AFP) aVDPV2 (2 AFP) iVDPV3 (1 AFP)	aVDPV1 (1 AFP) aVDPV2 (1 AFP) iVDPV2 (1 AFP) aVDPV2 (1 env)	aVDPV3 (1 AFP)	aVDPV3 (1 AFP) ?VDPV3 (1 AFP)
China, Hong Kong SAR	2005 - 3								
Japan	2005 - 1 Total - 2								
Lao People's Democratic Republic	2004 - 3						cVDPV1 (8 AFP + 21 contacts)	cVDPV1 (3 AFP + 4 contacts)	
Mongolia	2003 - 1								
Philippines	2001 - 3					aVDPV2 (1 AFP)			
Viet Nam				aVDPV2 (2 AFP)					

1. Prefix letter refers to the VDPV category: "cVDPV" = circulating VDPV, "iVDPV" = immunodeficiency-associated VDPV, "aVDPV" = ambiguous VDPV, "?VDPV" = pending. Suffix number refers to the poliovirus serotype (types 1, 2 or 3).

2. Source of specimens could be AFP cases, contacts, non-AFP cases or environmental

3. Refers to year of last VDPV case, and aggregate total of VDPV cases for 2000-2009