

## HIGHLIGHTS

### 17th Meeting of the Global Commission for the Certification of the Eradication of Poliomyelitis 26-27 February 2018 - Geneva, Switzerland

On 26-27 February 2018, the Global Commission for Certification of Poliomyelitis Eradication (GCC) met in Geneva, Switzerland, to review the criteria that will need to be met to achieve global certification of wild poliovirus (WPV) eradication. With fewer cases of WPV reported from fewer countries than ever before, the GCC is accelerating its work to prepare for the eventual certification that WPVs have been eradicated from the world. As part of this process, the GCC faces two important and challenging tasks:

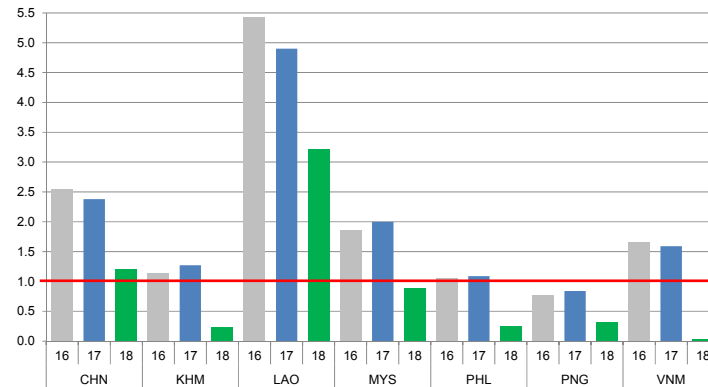
- obtaining and evaluating convincing evidence of interruption of poliovirus transmission; and
- obtaining and evaluating evidence that polioviruses will be contained to a high level where they are being held.

Discussions focused on reviewing regional progress in the remaining endemic regions (Africa and the Eastern Mediterranean) and polio-free regions, defining the parameters that will be used for certification, discussing surveillance requirements including in settings requiring additional data such as conflict settings, and evaluating requirements for safe containment of polioviruses in laboratory settings.

## CONTACT US

Expanded Programme on Immunization  
Regional Office for the Western Pacific  
World Health Organization  
P.O. Box 2932, 1000 Manila, Philippines  
Phone: +63 2 5288001  
Fax: +63 2 5211036, 5260279  
Email: [wproepidata@who.int](mailto:wproepidata@who.int)  
Web: [www.wpro.who.int/immunization](http://www.wpro.who.int/immunization)

Chart 1. Non-polio AFP rate (per 100 000 persons < 15 years of age), 2016–2018\*



\* AFP rate annualized as of week 10

Chart 2. Adequate specimen collection rate, 2016–2018

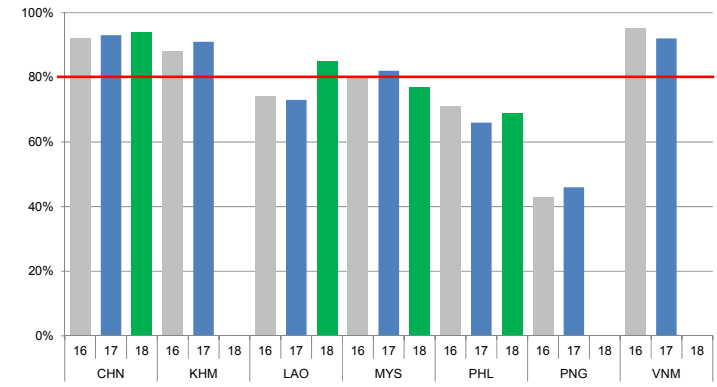


Chart 3. Percentage of reported AFP cases by number of polio vaccination doses, 2018

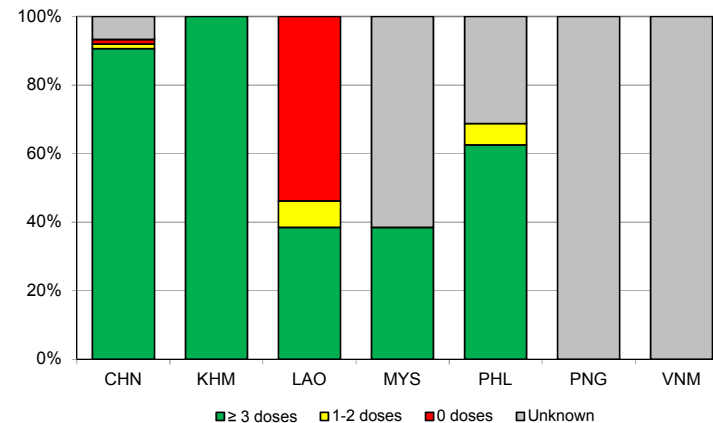
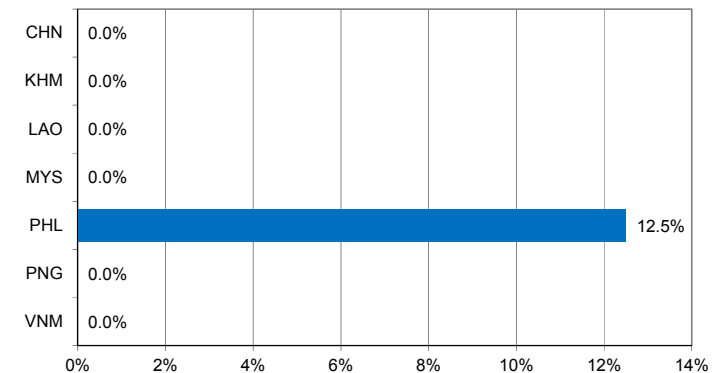


Chart 4. Percentage of reported AFP cases with pending classification > 90 days after onset, 2018



Note: Priority countries were selected for the charts. Official WHO acronyms have been used for abbreviation: CHN (China), KHM (Cambodia), LAO (Lao People's Democratic Republic), MYS (Malaysia), PHL (Philippines), PNG (Papua New Guinea), and VNM (Viet Nam).

Table 1A. Classification of AFP cases with onset in 2017 and key surveillance indicators

Country/area	2016		2017											
	Total reported cases	Annual expected cases <15 years of age	Total reported cases	Classification						Indicators			Latest report date <sup>4</sup>	Days since last report <sup>5</sup>
				Confirmed wild poliovirus	Vaccine-derived poliovirus (VDPV)	Polio-compatible	Discarded (Non-polio)	Pending		Non-polio AFP rate	% with adequate specimens <sup>2</sup>	% investigated ≤ 2 days of notification <sup>3</sup>		
								Total	> 90 days <sup>1</sup> # (%)					≥ 1
Australia	62	45	59	0	0	1	57	1	1 (1.7%)	1.31	37%	97%	08-Mar-18	5
Brunei Darussalam	1	1	1	0	0	0	1	0	0 (0.0%)	1.00	0%	100%	09-Jan-18	-
Cambodia	51	45	57	0	0	0	57	0	0 (0.0%)	1.27	91%	95%	07-Feb-18	-
China	5691	2256	5371	0	2	0	4374	995	715 (13.3%)	2.38	93%	100%	07-Mar-18	6
China, Hong Kong SAR	10	8	15	0	0	0	15	0	0 (0.0%)	1.88	80%	100%	01-Mar-18	-
China, Macao SAR	1	1	2	0	0	0	2	0	0 (0.0%)	2.00	50%	100%	18-Jan-18	-
Japan	-	161	-	-	-	-	-	-	-	-	-	-	-	-
Lao People's Democratic Republic	133	21	103	0	0	0	103	0	0 (0.0%)	4.90	73%	73%	27-Feb-18	-
Malaysia	143	77	154	0	0	0	154	0	0 (0.0%)	2.00	82%	90%	06-Mar-18	-
Mongolia	7	9	6	0	0	0	6	0	0 (0.0%)	0.67	83%	100%	11-Jan-18	-
New Zealand	12	9	13	0	0	0	13	0	0 (0.0%)	1.44	38%	100%	02-Mar-18	-
Papua New Guinea	23	31	26	0	0	0	26	0	0 (0.0%)	0.84	46%	100%	28-Feb-18	-
Philippines	417	400	434	0	0	0	364	70	62 (14.3%)	1.09	66%	97%	19-Jan-18	53
Republic of Korea	70	68	68	0	0	0	68	0	0 (0.0%)	1.00	94%	100%	12-Mar-18	-
Singapore	7	6	7	0	0	0	7	0	0 (0.0%)	1.17	86%	100%	07-Feb-18	-
Viet Nam	382	234	373	0	0	0	270	103	72 (19.3%)	1.59	92%	89%	06-Feb-18	35
Pacific island countries and areas	20	11	16	0	0	0	13	3	1 (6.3%)	1.45	63%	100%	20-Feb-18	21
<b>Total</b>	<b>7030</b>	<b>3383</b>	<b>6705</b>	<b>0</b>	<b>2</b>	<b>1</b>	<b>5530</b>	<b>1172</b>	<b>851 (12.7%)</b>	<b>1.98</b>	<b>90%</b>	<b>98%</b>		

1. Number (%) of reported cases pending classification more than 90 days from date of onset of paralysis to date of last report
2. Percentage of reported cases with two stool specimens collected 24 hours apart and within 14 days of onset of paralysis
3. Percentage of reported cases investigated within two days of notification
4. Report date is fixed as soon as all cases for the year have been classified
5. Countries are expected to submit data at least once per month to WPRO

<span style="background-color: green; width: 20px; height: 10px; display: inline-block;"></span>	Reached or surpass target
<span style="background-color: yellow; width: 20px; height: 10px; display: inline-block;"></span>	Nearly reached target 0.5-0.99 for non-polio AFP rate; 60-79% for other indicators
<span style="background-color: red; width: 20px; height: 10px; display: inline-block;"></span>	Substantially below target

Table 1B. Classification of AFP cases with onset in 2018 and key surveillance indicators

Country/area	2017		2018											
	Total reported cases	Annual expected cases <15 years of age	Total reported cases	Classification						Indicators			Latest report date	Days since last report <sup>5</sup>
				Confirmed wild poliovirus	Vaccine-derived poliovirus (VDPV)	Polio-compatible	Discarded (Non-polio)	Pending		Non-polio AFP rate <sup>2</sup>	% with adequate specimens <sup>3</sup>	% investigated ≤ 2 days of notification <sup>4</sup>		
								Total	> 90 days <sup>1</sup> # (%)					
≥ 1	≥ 80%	≥ 80%	≤ 30											
Australia	59	46	6	0	0	0	0	6	0 (0.0%)	0.68	67%	83%	08-Mar-18	5
Brunei Darussalam	1	1	0	-	-	-	-	-	-	-	-	-	09-Jan-18	63
Cambodia	57	44	2	0	0	0	2	0	0 (0.0%)	0.24	0%	50%	07-Feb-18	34
China	5371	2256	523	0	0	0	4	519	0 (0.0%)	1.21	94%	99%	07-Mar-18	6
China, Hong Kong SAR	15	9	0	-	-	-	-	-	-	-	-	-	01-Mar-18	12
China, Macao SAR	2	1	0	-	-	-	-	-	-	-	-	-	14-Feb-18	27
Japan	-	161	-	-	-	-	-	-	-	-	-	-	-	-
Lao People's Democratic Republic	103	21	13	0	0	0	7	6	0 (0.0%)	3.22	85%	54%	27-Feb-18	14
Malaysia	154	77	13	0	0	0	0	13	0 (0.0%)	0.88	77%	38%	05-Mar-18	8
Mongolia	6	9	1	0	0	0	0	1	0 (0.0%)	0.58	100%	100%	05-Mar-18	8
New Zealand	13	9	0	-	-	-	-	-	-	-	-	-	02-Mar-18	11
Papua New Guinea	26	34	2	0	0	0	0	2	0 (0.0%)	0.31	0%	50%	02-Mar-18	11
Philippines	434	338	16	0	0	0	9	7	2 (12.5%)	0.25	69%	94%	02-Mar-18	11
Republic of Korea	68	67	11	0	0	0	0	11	0 (0.0%)	0.85	91%	100%	12-Mar-18	1
Singapore	7	6	0	-	-	-	-	-	-	-	-	-	09-Mar-18	4
Viet Nam	373	234	1	0	0	0	0	1	0 (0.0%)	0.02	0%	0%	06-Feb-18	35
Pacific island countries and areas	16	11	0	-	-	-	-	-	-	-	-	-	20-Feb-18	21
<b>Total</b>	<b>6705</b>	<b>3324</b>	<b>588</b>	<b>0</b>	<b>0</b>	<b>0</b>	<b>22</b>	<b>566</b>	<b>2 (0.3%)</b>	<b>0.92</b>	<b>92%</b>	<b>96%</b>		

1. Number (%) of reported cases pending classification more than 90 days from date of onset of paralysis to date of last report
2. Annualized non-polio AFP rate per 100 000 population under 15 years of age
3. Percentage of reported cases with two stool specimens collected 24 hours apart and within 14 days of onset of paralysis
4. Percentage of reported cases investigated within two days of notification
5. Countries are expected to submit data at least once per month to WPRO

	Reached or surpass target
	Nearly reached target 0.5-0.99 for non-polio AFP rate; 60-79% for other indicators
	Substantially below target

Table 2A. Laboratory investigation of stool samples from AFP cases with onset in 2017 and key laboratory indicators

Country/area	Polio laboratory	Total no. of AFP cases with specimens	Results of virus isolation for AFP cases										Intracyclic differentiation/ Sequencing laboratory <sup>1</sup>	No. of isolates received	Results of intracyclic differentiation (ITD)/sequencing for virus isolates																				
			L20B positive	L20B positive + NPEV	NPEV only	Negative	Pending ≤ 14 days	Pending > 14 days	% results reported ≤ 14 days ≥ 80%	% specimens positive for NPEV	Latest report date	Type 1			Type 2			Type 3			NPEV <sup>2</sup>	Pending ITD	Discordant pending sequencing	% ITD results reported ≤ 7 days of receipt ≥ 80%											
												Wild			Sabin	VDPV	Wild	Sabin	VDPV	Wild					Sabin	VDPV									
Australia	VIDRL	44	0	0	4	40	0	0	95%	10%	08-Feb-18	VIDRL	0	-	-	-	-	-	-	-	-	-	-	-	-	-	-	-	-	-	-	-	-	-	
Brunei Darussalam	VIDRL	0	-	-	-	-	-	-	-	-	08-Feb-18	VIDRL	0	-	-	-	-	-	-	-	-	-	-	-	-	-	-	-	-	-	-	-	-		
Cambodia	NIID	57	0	0	6	51	0	0	96%	9%	26-Jan-18	NIID	0	-	-	-	-	-	-	-	-	-	-	-	-	-	-	-	-	-	-	-	-		
China (total)		5301	48	0	348	4875	0	30	96%	6%	07-Mar-18		130	0	40	0	0	0	0	64	18	8	0	0	0	99%									
China, Anhui	Prov. Lab	303	3	0	13	285	0	2	100%	3%		Prov. Lab/CCDC	8	0	6	0	0	0	0	2	0	0	0	0	100%										
China, Beijing	Prov. Lab	33	1	0	0	32	0	0	97%	0%		Prov. Lab/CCDC	1	0	0	0	0	0	0	1	0	0	0	0	100%										
China, Chongqing	Prov. Lab	80	0	0	2	78	0	0	93%	2%		Prov. Lab/CCDC	4	0	0	0	0	0	0	2	0	2	0	0	100%										
China, Fujian	Prov. Lab	179	1	0	11	167	0	0	95%	5%		Prov. Lab/CCDC	1	0	0	0	0	0	0	1	0	0	0	0	100%										
China, Gansu	Prov. Lab	108	0	0	4	103	0	1	99%	3%		Prov. Lab/CCDC	2	0	0	0	0	0	0	0	0	2	0	0	100%										
China, Guangdong	Prov. Lab	400	4	0	33	363	0	0	94%	7%		Prov. Lab/CCDC	12	0	6	0	0	0	0	6	0	0	0	0	100%										
China, Guangxi	Prov. Lab	269	5	0	33	231	0	0	97%	11%		Prov. Lab/CCDC	10	0	4	0	0	0	0	6	0	0	0	0	100%										
China, Guizhou	Prov. Lab	193	0	0	15	178	0	0	97%	7%		Prov. Lab/CCDC	0	-	-	-	-	-	-	-	-	-	-	-	-	-	-	-	-	-	-	-	-		
China, Hebei	Prov. Lab	281	4	0	28	249	0	0	99%	8%		Prov. Lab/CCDC	7	0	4	0	0	0	0	3	0	0	0	0	100%										
China, Heilongjiang	Prov. Lab	106	1	0	5	100	0	0	100%	5%		Prov. Lab/CCDC	1	0	0	0	0	0	0	1	0	0	0	0	100%										
China, Henan	Prov. Lab	517	8	0	58	451	0	0	91%	9%		Prov. Lab/CCDC	21	0	2	0	0	0	0	14	1	4	0	0	100%										
China, Hubei	Prov. Lab	195	0	0	21	170	0	4	97%	10%		Prov. Lab/CCDC	0	-	-	-	-	-	-	-	-	-	-	-	-	-	-	-	-	-	-	-	-		
China, Hunan	Prov. Lab	265	1	0	18	244	0	2	99%	6%		Prov. Lab/CCDC	4	0	3	0	0	0	0	1	0	0	0	0	100%										
China, Jiangsu	Prov. Lab	229	4	0	3	222	0	0	100%	1%		Prov. Lab/CCDC	8	0	2	0	0	0	0	6	0	0	0	0	100%										
China, Jiangxi	Prov. Lab	163	1	0	16	146	0	0	95%	8%		Prov. Lab/CCDC	3	0	0	0	0	0	0	3	0	0	0	0	100%										
China, Jilin	Prov. Lab	60	1	0	6	53	0	0	100%	8%		Prov. Lab/CCDC	4	0	2	0	0	0	0	2	0	0	0	0	50%										
China, Neimongol	Prov. Lab	102	2	0	1	99	0	0	99%	0%		Prov. Lab/CCDC	5	0	3	0	0	0	0	2	0	0	0	0	100%										
China, Ningxia	Prov. Lab	19	0	0	2	17	0	0	95%	11%		Prov. Lab/CCDC	0	-	-	-	-	-	-	-	-	-	-	-	-	-	-	-	-	-	-	-	-	-	
China, Shaanxi	Prov. Lab	111	1	0	2	103	0	5	92%	2%		Prov. Lab/CCDC	1	0	0	0	0	0	0	1	0	0	0	0	100%										
China, Shandong	Prov. Lab	363	5	0	9	348	0	1	95%	2%		Prov. Lab/CCDC	25	0	1	0	0	0	0	7	17	0	0	0	100%										
China, Shanghai	Prov. Lab	37	0	0	0	37	0	0	100%	0%		Prov. Lab/CCDC	0	-	-	-	-	-	-	-	-	-	-	-	-	-	-	-	-	-	-	-	-		
China, Shanxi	Prov. Lab	170	0	0	6	164	0	0	95%	3%		Prov. Lab/CCDC	0	-	-	-	-	-	-	-	-	-	-	-	-	-	-	-	-	-	-	-	-		
China, Sichuan	Prov. Lab	368	0	0	21	339	0	8	96%	5%		Prov. Lab/CCDC	2	0	2	0	0	0	0	0	0	0	0	0	100%										
China, Tianjin	Prov. Lab	30	0	0	0	30	0	0	98%	0%		Prov. Lab/CCDC	0	-	-	-	-	-	-	-	-	-	-	-	-	-	-	-	-	-	-	-	-		
China, Xinjiang	Prov. Lab	147	4	0	10	132	0	1	93%	7%		Prov. Lab/CCDC	8	0	5	0	0	0	0	3	0	0	0	0	100%										
China, Yunnan	Prov. Lab	244	1	0	17	225	0	1	93%	6%		Prov. Lab/CCDC	1	0	0	0	0	0	0	1	0	0	0	0	100%										
China, Zhejiang	Prov. Lab	173	1	0	7	165	0	0	99%	3%		Prov. Lab/CCDC	2	0	0	0	0	0	0	2	0	0	0	0	100%										
China, Hainan	Prov. Lab	30	0	0	3	27	0	0	93%	8%		CCDC	0	-	-	-	-	-	-	-	-	-	-	-	-	-	-	-	-	-	-	-	-	-	
China, Liaoning	Prov. Lab	97	0	0	3	89	0	5	99%	2%		CCDC	0	-	-	-	-	-	-	-	-	-	-	-	-	-	-	-	-	-	-	-	-	-	
China, Qinghai	Prov. Lab	21	0	0	1	20	0	0	100%	5%		CCDC	0	-	-	-	-	-	-	-	-	-	-	-	-	-	-	-	-	-	-	-	-	-	
China, Tibet	Prov. Lab	8	0	0	0	8	0	0	63%	0%		CCDC	0	-	-	-	-	-	-	-	-	-	-	-	-	-	-	-	-	-	-	-	-	-	
China, Hong Kong SAR	PHLC	15	0	0	0	15	0	0	98%	0%	22-Jan-18	PHLC	0	-	-	-	-	-	-	-	-	-	-	-	-	-	-	-	-	-	-	-	-	-	
China, Macao SAR	PHLC	2	0	0	0	2	0	0	100%	0%	22-Jan-18	PHLC	0	-	-	-	-	-	-	-	-	-	-	-	-	-	-	-	-	-	-	-	-	-	-
Japan	NIID	-	-	-	-	-	-	-	-	-	-	NIID	-	-	-	-	-	-	-	-	-	-	-	-	-	-	-	-	-	-	-	-	-	-	
Lao People's Democratic Republic	NIID	144	1	1	15	127	0	0	96%	10%	29-Jan-18	NIID	4	0	0	0	0	0	0	2	0	2	0	0	100%										
Malaysia	IMR	182	0	0	9	173	0	0	98%	5%	09-Feb-18	IMR	0	-	-	-	-	-	-	-	-	-	-	-	-	-	-	-	-	-	-	-	-	-	
Mongolia	PHI	7	0	0	0	7	0	0	100%	0%	27-Feb-18	NIID	0	-	-	-	-	-	-	-	-	-	-	-	-	-	-	-	-	-	-	-	-	-	-
New Zealand	IESR	9	0	0	0	9	0	0	100%	0%	23-Jan-18	IESR	0	-	-	-	-	-	-	-	-	-	-	-	-	-	-	-	-	-	-	-	-	-	-
Papua New Guinea	VIDRL	26	0	0	8	18	0	0	100%	22%	08-Feb-18	VIDRL	0	-	-	-	-	-	-	-	-	-	-	-	-	-	-	-	-	-	-	-	-	-	-
Philippines	RITM	475	6	0	27	442	0	0	97%	4%	06-Mar-18	RITM	15	0	4	0	0	0	0	11	0	0	0	0	100%										
Republic of Korea	NIH	68	0	0	4	64	0	0	97%	4%	09-Feb-18	NIH	0	-	-	-	-	-	-	-	-	-	-	-	-	-	-	-	-	-	-	-	-	-	-
Singapore	SGH	7	0	0	0	7	0	0	100%	0%	15-Feb-18	SGH	0	-	-	-	-	-	-	-	-	-	-	-	-	-	-	-	-	-	-	-	-	-	-
Viet Nam (North)	NIHE	177	1	0	29	147	0	0	100%	14%	25-Jan-18	NIHE	2	0	0	0	0	0	0	2	0	0	0	0	100%										
Viet Nam (South)	PI	194	0	0	34	160	0	0	100%	18%	21-Feb-18	PI	0	-	-	-	-	-	-	-	-	-	-	-	-	-	-	-	-	-	-	-	-	-	-
Pacific island countries and areas	VIDRL	16	0	0	5	11	0	0	100%	26%	08-Feb-18	VIDRL	0	-	-	-	-	-	-	-	-	-	-	-	-	-	-	-	-	-	-	-	-	-	-
<b>Total</b>		<b>6724</b>	<b>56</b>	<b>1</b>	<b>489</b>	<b>6148</b>	<b>0</b>	<b>30</b>	<b>95%</b>	<b>6%</b>			<b>151</b>	<b>0</b>	<b>44</b>	<b>0</b>	<b>0</b>	<b>0</b>	<b>0</b>	<b>0</b>	<b>79</b>	<b>18</b>	<b>10</b>	<b>0</b>	<b>0</b>	<b>0</b>	<b>0</b>	<b>0</b>	<b>0</b>	<b>0</b>	<b>99%</b>				

1. CCDC (Chinese Center for Disease Control and Prevention, China); IESR (Institute of Environmental Science and Research, New Zealand); IMR (Institute of Medical Research, Malaysia); NIH (National Institute of Health, Republic of Korea); NIHE (National Institute of Hygiene and Epidemiology, Ha Noi, Viet Nam); NIID (National Institute of Infectious Diseases, Japan); PHI (Public Health Institute, Mongolia); PHLC (Public Health Laboratory Center, China, Hong Kong SAR); PI (Pasteur Institute, Ho Chi Minh, Viet Nam); RITM (Research Institute for Tropical Medicine, Philippines); SGH (Singapore General Hospital); VIDRL (Victorian Infectious Diseases Reference Laboratory, Australia)

2. NPEV growing in L20B cells

Table 2B. Laboratory investigation of stool samples from AFP cases with onset in 2018 and key laboratory indicators

Country/area	Polio laboratory	Total no. of AFP cases with specimens	Results of virus isolation for AFP cases								Intratyptic differentiation/ Sequencing laboratory <sup>1</sup>	No. of isolates received	Results of intratyptic differentiation (ITD)/sequencing for virus isolates																
			L20B positive	L20B positive + NPEV	NPEV only	Negative	Pending ≤ 14 days	Pending > 14 days	% results reported ≤ 14 days ≥ 80%	% specimens positive for NPEV			Latest report date	Type 1			Type 2			Type 3			NPEV <sup>2</sup>	Pending ITD	Discordant pending sequencing	% ITD results reported ≤ 7 days of receipt ≥ 80%			
														Wild	Sabin	VDPV	Wild	Sabin	VDPV	Wild	Sabin	VDPV							
Australia	VIDRL	8	0	0	0	5	3	0	100%	0%	28-Feb-18	VIDRL	0	-	-	-	-	-	-	-	-	-	-	-	-	-	-	-	
Brunei Darussalam	VIDRL	0	-	-	-	-	-	-	-	-	28-Feb-18	VIDRL	0	-	-	-	-	-	-	-	-	-	-	-	-	-	-	-	-
Cambodia	NIID	2	0	0	1	1	0	0	100%	25%	07-Feb-18	NIID	0	-	-	-	-	-	-	-	-	-	-	-	-	-	-	-	-
China (total)		515	2	0	15	457	1	40	97%	3%	07-Mar-18		5	0	2	0	0	0	0	3	0	0	0	0	0	0	0	100%	
China, Anhui	Prov. Lab	22	0	0	0	19	0	3	100%	0%		Prov. Lab/CCDC	0	-	-	-	-	-	-	-	-	-	-	-	-	-	-	-	-
China, Beijing	Prov. Lab	2	0	0	0	2	0	0	100%	0%		Prov. Lab/CCDC	0	-	-	-	-	-	-	-	-	-	-	-	-	-	-	-	-
China, Chongqing	Prov. Lab	9	0	0	0	9	0	0	89%	0%		Prov. Lab/CCDC	0	-	-	-	-	-	-	-	-	-	-	-	-	-	-	-	-
China, Fujian	Prov. Lab	26	1	0	0	25	0	0	100%	0%		Prov. Lab/CCDC	1	0	0	0	0	0	0	1	0	0	0	0	0	0	0	100%	
China, Gansu	Prov. Lab	6	0	0	0	5	0	1	100%	0%		Prov. Lab/CCDC	0	-	-	-	-	-	-	-	-	-	-	-	-	-	-	-	-
China, Guangdong	Prov. Lab	44	0	0	0	44	0	0	100%	0%		Prov. Lab/CCDC	0	-	-	-	-	-	-	-	-	-	-	-	-	-	-	-	-
China, Guangxi	Prov. Lab	26	0	0	1	24	0	1	92%	4%		Prov. Lab/CCDC	0	-	-	-	-	-	-	-	-	-	-	-	-	-	-	-	-
China, Guizhou	Prov. Lab	24	0	0	0	23	0	1	96%	0%		Prov. Lab/CCDC	0	-	-	-	-	-	-	-	-	-	-	-	-	-	-	-	-
China, Hebei	Prov. Lab	33	0	0	5	27	0	1	100%	12%		Prov. Lab/CCDC	0	-	-	-	-	-	-	-	-	-	-	-	-	-	-	-	-
China, Heilongjiang	Prov. Lab	7	0	0	1	6	0	0	100%	14%		Prov. Lab/CCDC	0	-	-	-	-	-	-	-	-	-	-	-	-	-	-	-	-
China, Henan	Prov. Lab	46	0	0	1	45	0	0	100%	1%		Prov. Lab/CCDC	0	-	-	-	-	-	-	-	-	-	-	-	-	-	-	-	-
China, Hubei	Prov. Lab	13	0	0	0	11	0	2	100%	0%		Prov. Lab/CCDC	0	-	-	-	-	-	-	-	-	-	-	-	-	-	-	-	-
China, Hunan	Prov. Lab	10	0	0	1	9	0	0	90%	5%		Prov. Lab/CCDC	0	-	-	-	-	-	-	-	-	-	-	-	-	-	-	-	-
China, Jiangsu	Prov. Lab	10	0	0	0	10	0	0	100%	0%		Prov. Lab/CCDC	0	-	-	-	-	-	-	-	-	-	-	-	-	-	-	-	-
China, Jiangxi	Prov. Lab	16	0	0	0	12	0	4	96%	0%		Prov. Lab/CCDC	0	-	-	-	-	-	-	-	-	-	-	-	-	-	-	-	-
China, Jilin	Prov. Lab	11	1	0	0	9	0	1	100%	0%		Prov. Lab/CCDC	4	0	2	0	0	0	0	2	0	0	0	0	0	0	0	100%	-
China, Nei Mongol	Prov. Lab	10	0	0	1	8	0	1	100%	11%		Prov. Lab/CCDC	0	-	-	-	-	-	-	-	-	-	-	-	-	-	-	-	-
China, Ningxia	Prov. Lab	3	0	0	0	3	0	0	100%	0%		Prov. Lab/CCDC	0	-	-	-	-	-	-	-	-	-	-	-	-	-	-	-	-
China, Shaanxi	Prov. Lab	17	0	0	0	10	0	7	100%	0%		Prov. Lab/CCDC	0	-	-	-	-	-	-	-	-	-	-	-	-	-	-	-	-
China, Shandong	Prov. Lab	40	0	0	0	40	0	0	100%	0%		Prov. Lab/CCDC	0	-	-	-	-	-	-	-	-	-	-	-	-	-	-	-	-
China, Shanghai	Prov. Lab	2	0	0	0	2	0	0	100%	0%		Prov. Lab/CCDC	0	-	-	-	-	-	-	-	-	-	-	-	-	-	-	-	-
China, Shanxi	Prov. Lab	21	0	0	0	21	0	0	86%	0%		Prov. Lab/CCDC	0	-	-	-	-	-	-	-	-	-	-	-	-	-	-	-	-
China, Sichuan	Prov. Lab	40	0	0	1	25	0	14	98%	2%		Prov. Lab/CCDC	0	-	-	-	-	-	-	-	-	-	-	-	-	-	-	-	-
China, Tianjin	Prov. Lab	2	0	0	0	2	0	0	100%	0%		Prov. Lab/CCDC	0	-	-	-	-	-	-	-	-	-	-	-	-	-	-	-	-
China, Xinjiang	Prov. Lab	9	0	0	1	8	0	0	89%	11%		Prov. Lab/CCDC	0	-	-	-	-	-	-	-	-	-	-	-	-	-	-	-	-
China, Yunnan	Prov. Lab	35	0	0	3	30	1	1	82%	9%		Prov. Lab/CCDC	0	-	-	-	-	-	-	-	-	-	-	-	-	-	-	-	-
China, Zhejiang	Prov. Lab	17	0	0	0	17	0	0	100%	0%		Prov. Lab/CCDC	0	-	-	-	-	-	-	-	-	-	-	-	-	-	-	-	-
China, Hainan	Prov. Lab	3	0	0	0	3	0	0	100%	0%		CCDC	0	-	-	-	-	-	-	-	-	-	-	-	-	-	-	-	-
China, Liaoning	Prov. Lab	7	0	0	0	5	0	2	100%	0%		CCDC	0	-	-	-	-	-	-	-	-	-	-	-	-	-	-	-	-
China, Qinghai	Prov. Lab	3	0	0	0	3	0	0	100%	0%		CCDC	0	-	-	-	-	-	-	-	-	-	-	-	-	-	-	-	-
China, Tibet	Prov. Lab	1	0	0	0	0	0	1	-	-		CCDC	0	-	-	-	-	-	-	-	-	-	-	-	-	-	-	-	-
China, Hong Kong SAR	PHLC	0	-	-	-	-	-	-	-	-	08-Mar-18	PHLC	0	-	-	-	-	-	-	-	-	-	-	-	-	-	-	-	-
China, Macao SAR	PHLC	1	0	0	0	1	0	0	100%	0%	08-Mar-18	PHLC	0	-	-	-	-	-	-	-	-	-	-	-	-	-	-	-	-
Japan	NIID	-	-	-	-	-	-	-	-	-		NIID	0	-	-	-	-	-	-	-	-	-	-	-	-	-	-	-	-
Lao People's Democratic Republic	NIID	17	0	0	2	14	0	1	100%	9%	12-Mar-18	NIID	0	-	-	-	-	-	-	-	-	-	-	-	-	-	-	-	-
Malaysia	IMR	13	0	0	1	12	0	0	92%	8%	07-Mar-18	IMR	0	-	-	-	-	-	-	-	-	-	-	-	-	-	-	-	-
Mongolia	PHI	1	0	0	1	0	0	0	100%	100%	09-Mar-18	NIID	0	-	-	-	-	-	-	-	-	-	-	-	-	-	-	-	-
New Zealand	IESR	0	-	-	-	-	-	-	-	-	12-Mar-18	IESR	0	-	-	-	-	-	-	-	-	-	-	-	-	-	-	-	-
Papua New Guinea	VIDRL	2	0	0	0	0	2	0	-	-	28-Feb-18	VIDRL	0	-	-	-	-	-	-	-	-	-	-	-	-	-	-	-	-
Philippines	RITM	54	0	0	2	45	7	0	97%	3%	06-Mar-18	RITM	0	-	-	-	-	-	-	-	-	-	-	-	-	-	-	-	-
Republic of Korea	NIH	11	0	0	0	7	4	0	100%	0%	12-Mar-18	NIH	0	-	-	-	-	-	-	-	-	-	-	-	-	-	-	-	-
Singapore	SGH	0	-	-	-	-	-	-	-	-	09-Mar-18	SGH	0	-	-	-	-	-	-	-	-	-	-	-	-	-	-	-	-
Viet Nam (North)	NIHE	3	0	0	0	3	0	0	100%	0%	28-Feb-18	NIHE	0	-	-	-	-	-	-	-	-	-	-	-	-	-	-	-	-
Viet Nam (South)	PI	8	0	0	1	6	1	0	100%	14%	06-Mar-18	PI	0	-	-	-	-	-	-	-	-	-	-	-	-	-	-	-	-
Pacific island countries and areas	VIDRL	0	-	-	-	-	-	-	-	-	28-Feb-18	VIDRL	0	-	-	-	-	-	-	-	-	-	-	-	-	-	-	-	-
Total		635	2	0	23	551	18	41	97%	3%			5	0	2	0	0	0	0	3	0	0	0	0	0	0	0	100%	

1. CCDC (Chinese Center for Disease Control and Prevention, China); IESR (Institute of Environmental Science and Research, New Zealand); IMR (Institute of Medical Research, Malaysia); NIH (National Institute of Health, Republic of Korea); NIHE (National Institute of Hygiene and Epidemiology, Ha Noi, Viet Nam); NIID (National Institute of Infectious Diseases, Japan); PHI (Public Health Institute, Mongolia); PHLC (Public Health Laboratory Center, China, Hong Kong SAR); PI (Pasteur Institute, Ho Chi Minh, Viet Nam); RITM (Research Institute for Tropical Medicine, Philippines); SGH (Singapore General Hospital); VIDRL (Victorian Infectious Diseases Reference Laboratory, Australia)

2. NPEV growing in L20B cells

Table 3. Laboratory confirmation of polio isolates from environmental samples in 2017–2018 <sup>1</sup>

Country/area	Intratyptic differentiation lab <sup>2</sup>	2017													2018															
		Total number of samples processed	Total number of samples with polio isolates	Polio isolates									NPEV	Pending ITD	Discordant pending sequencing	Total number of samples processed	Total number of samples with polio isolates	Polio isolates									NPEV	Pending ITD	Discordant pending sequencing	
				Type 1			Type 2			Type 3								Type 1			Type 2			Type 3						
				Wild	Sabin	VDPV	Wild	Sabin	VDPV	Wild	Sabin	VDPV						Wild	Sabin	VDPV	Wild	Sabin	VDPV	Wild	Sabin	VDPV				
Australia	VIDRL	6	2	0	0	0	0	0	1	0	1	0	4	0	0	8	2	0	2	0	0	0	0	0	0	0	0	3	0	0
China (total)		320	182	0	212	0	0	0	0	0	633	0	1130	0	0	11	10	0	4	0	0	0	0	0	33	0	55	0	0	
China, Fujian	Prov. Lab/CCDC	53	22	0	8	0	0	0	0	0	42	0	331	0	0	8	7	0	1	0	0	0	0	0	18	0	50	0	0	
China, Gansu	Prov. Lab/CCDC	10	8	0	10	0	0	0	0	0	27	0	12	0	0	0	-	-	-	-	-	-	-	-	-	-	-	-	-	
China, Guangdong	Prov. Lab/CCDC	48	39	0	18	0	0	0	0	0	87	0	108	0	0	0	-	-	-	-	-	-	-	-	-	-	-	-	-	
China, Guangxi	Prov. Lab/CCDC	36	20	0	22	0	0	0	0	0	36	0	94	0	0	0	-	-	-	-	-	-	-	-	-	-	-	-	-	
China, Heilongjiang	Prov. Lab/CCDC	42	16	0	12	0	0	0	0	0	32	0	110	0	0	0	-	-	-	-	-	-	-	-	-	-	-	-	-	
China, Shandong	Prov. Lab/CCDC	45	27	0	18	0	0	0	0	0	88	0	258	0	0	0	-	-	-	-	-	-	-	-	-	-	-	-	-	
China, Shanghai	Prov. Lab/CCDC	22	16	0	16	0	0	0	0	0	54	0	45	0	0	0	-	-	-	-	-	-	-	-	-	-	-	-	-	
China, Xinjiang	Prov. Lab/CCDC	36	34	0	108	0	0	0	0	0	267	0	115	0	0	3	3	0	3	0	0	0	0	0	15	0	5	0	0	
China, Yunnan	Prov. Lab/CCDC	28	0	-	-	-	-	-	-	-	-	-	57	0	0	0	-	-	-	-	-	-	-	-	-	-	-	-	-	
Malaysia	IMR	24	0	-	-	-	-	-	-	-	-	-	22	0	0	0	-	-	-	-	-	-	-	-	-	-	-	-	-	
Philippines	RITM	40	8	0	1	0	0	0	0	0	7	0	21	0	0	10	0	0	0	0	0	0	0	0	0	0	4	0	0	
<b>Total</b>		<b>390</b>	<b>192</b>	<b>0</b>	<b>213</b>	<b>0</b>	<b>0</b>	<b>0</b>	<b>1</b>	<b>0</b>	<b>641</b>	<b>0</b>	<b>1177</b>	<b>0</b>	<b>0</b>	<b>29</b>	<b>12</b>	<b>0</b>	<b>6</b>	<b>0</b>	<b>0</b>	<b>0</b>	<b>0</b>	<b>0</b>	<b>0</b>	<b>33</b>	<b>0</b>	<b>62</b>	<b>0</b>	<b>0</b>

1. Based on year of collection of sample, if available. Otherwise, based on year of receipt at reference laboratory.

2. CCDC (Chinese Center for Disease Control and Prevention, China); IMR (Institute of Medical Research, Malaysia); RITM (Research Institute for Tropical Medicine, Philippines); VIDRL (Victorian Infectious Diseases Reference Laboratory, Australia)

Table 4. Vaccine-derived poliovirus<sup>1</sup> identified from laboratory testing<sup>2</sup>, 2000–2018

Country/area	2000–2009 <sup>3</sup>	2010	2011	2012	2013	2014	2015	2016	2017	2018
Australia									aVDPV2 (1 env)	
Cambodia	2006 - 1 Total - 2									
China	2009 - 1 Total - 27	aVDPV2 (3 AFP + 1 contact + 1 non-AFP) aVDPV3 (1 AFP + 1 non-AFP)	aVDPV1 (1 AFP) aVDPV2 (2 AFP + 1 contact) cVDPV2 (2 AFP) iVDPV2 (1 AFP + 1 non-AFP) iVDPV3 (1 AFP)	aVDPV1 (1 AFP) aVDPV2 (2 AFP) cVDPV2 (2 AFP + 1 contact) iVDPV2 + iVDPV3 (1 AFP)	aVDPV2 (1 non-AFP) iVDPV2 + iVDPV3 (1 AFP)	aVDPV1 (1 non-AFP) aVDPV2 (2 AFP) iVDPV3 (1 AFP)	aVDPV1 (1 AFP) aVDPV2 (1 AFP) iVDPV2 (1 AFP) aVDPV2 (1 env)	aVDPV3 (1 AFP)	aVDPV3 (1 AFP) ?VDPV3 (1 AFP)	
China, Hong Kong SAR	2005 - 3									
Japan	2005 - 1 Total - 2									
Lao People's Democratic Republic	2004 - 3						cVDPV1 (8 AFP + 21 contacts)	cVDPV1 (3 AFP + 4 contacts)		
Mongolia	2003 - 1									
Philippines	2001 - 3					aVDPV2 (1 AFP)				
Viet Nam				aVDPV2 (2 AFP)						

1. Prefix letter refers to the VDPV category: "cVDPV" = circulating VDPV, "iVDPV" = immunodeficiency-associated VDPV, "aVDPV" = ambiguous VDPV, "?VDPV" = pending. Suffix number refers to the poliovirus serotype (types 1, 2 or 3).

2. Source of specimens could be AFP cases, contacts, non-AFP cases or environmental

3. Refers to year of last VDPV case, and aggregate total of VDPV cases for 2000-2009