

## HIGHLIGHTS

### Sixth Meeting of the Combined Subregional Committees for the Certification of Poliomyelitis Eradication and Verification of Measles Elimination in Pacific Island Countries and Areas

The Sixth Meeting of the Combined Subregional Committees for the Certification of Poliomyelitis Eradication and Verification of Measles Elimination in Pacific island countries and areas was convened on 1-3 May 2018 in Nadi, Fiji. The main objectives of the meeting were:

- to review and classify all pending acute flaccid paralysis cases;
- to draft the annual report on progress in maintaining poliomyelitis-free status in Pacific island countries and areas for submission to the 2018 Regional Certification Commission at its 24th meeting; and
- to draft the annual report on progress towards achieving - to draft the annual report on progress towards achieving measles and rubella elimination in Pacific island countries and areas for submission to the 2018 Regional Verification Commission at its seventh meeting.

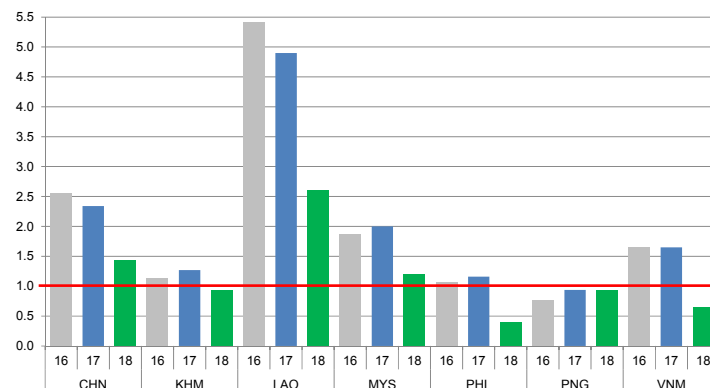
The Committee also reviewed the global and regional progress in measles and rubella elimination and polio eradication and developed general and country specific recommendations for the Pacific island countries and areas.



## CONTACT US

Expanded Programme on Immunization  
Regional Office for the Western Pacific  
World Health Organization  
P.O. Box 2932, 1000 Manila, Philippines  
Phone: +63 2 5288001  
Fax: +63 2 5211036, 5260279  
Email: [wproepidata@who.int](mailto:wproepidata@who.int)  
Web: [www.wpro.who.int/immunization](http://www.wpro.who.int/immunization)

Chart 1. Non-polio AFP rate (per 100 000 persons < 15 years of age), 2016–2018\*



\* AFP rate annualized as of week 18

Chart 2. Adequate specimen collection rate, 2016–2018

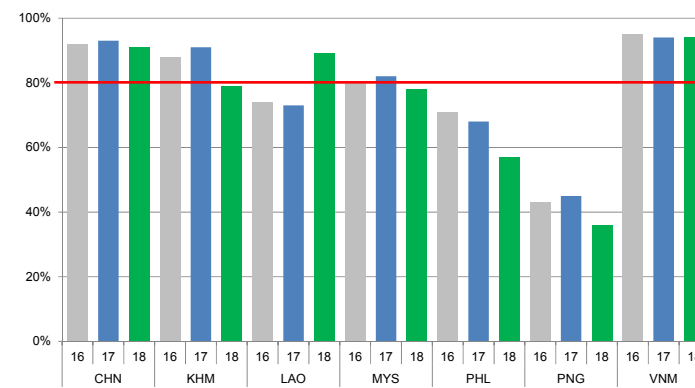


Chart 3. Percentage of reported AFP cases by number of polio vaccination doses, 2018

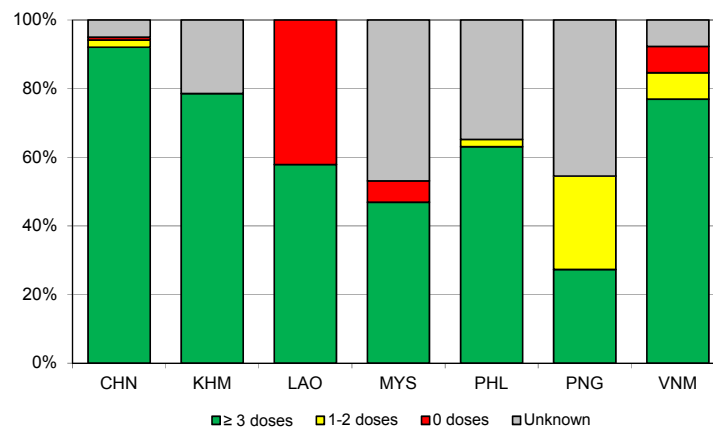
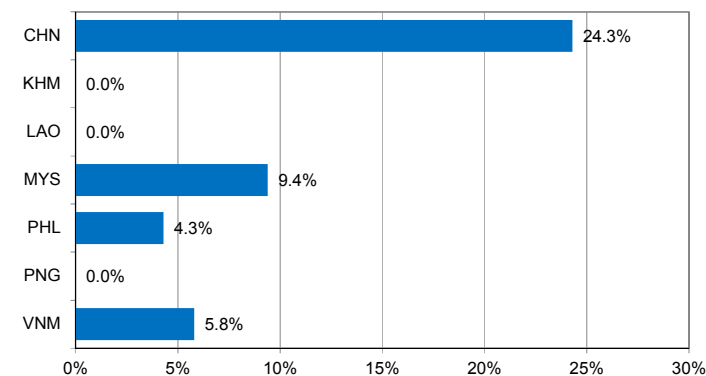


Chart 4. Percentage of reported AFP cases with pending classification > 90 days after onset, 2018



Note: Priority countries were selected for the charts. Official WHO acronyms have been used for abbreviation: CHN (China), KHM (Cambodia), LAO (Lao People's Democratic Republic), MYS (Malaysia), PHL (Philippines), PNG (Papua New Guinea), and VNM (Viet Nam).

Table 1A. Classification of AFP cases with onset in 2017 and key surveillance indicators

Country/area	2016		2017											
	Total reported cases	Annual expected cases <15 years of age	Total reported cases	Classification						Indicators			Latest report date	Days since last report <sup>5</sup>
				Confirmed wild poliovirus	Vaccine-derived poliovirus (VDPV)	Polio-compatible	Discarded (Non-polio)	Pending		Non-polio AFP rate <sup>2</sup>	% with adequate specimens <sup>3</sup>	% investigated ≤ 2 days of notification <sup>4</sup>		
								Total	> 90 days <sup>1</sup> # (%)					
≥ 1	≥ 80%	≥ 80%	≤ 30											
Australia	62	45	59	0	0	1	58	0	0 (0.0%)	1.31	37%	97%	19-Mar-18	-
Brunei Darrusalam	1	1	1	0	0	0	1	0	0 (0.0%)	1.00	0%	100%	09-Jan-18	-
Cambodia	51	45	57	0	0	0	57	0	0 (0.0%)	1.27	91%	95%	07-Feb-18	-
China	5691	2256	5278	0	2	0	5276	0	0 (0.0%)	2.34	93%	100%	02-May-18	-
China, Hong Kong SAR	10	8	15	0	0	0	15	0	0 (0.0%)	1.88	80%	100%	12-Apr-18	-
China, Macao SAR	1	1	2	0	0	0	2	0	0 (0.0%)	2.00	50%	100%	18-Jan-18	-
Japan	0	161	0	-	-	-	-	-	-	-	-	-	-	-
Lao People's Democratic Republic	133	21	103	0	0	0	103	0	0 (0.0%)	4.90	73%	73%	27-Mar-18	-
Malaysia	143	77	154	0	0	0	154	0	0 (0.0%)	2.00	82%	90%	06-Mar-18	-
Mongolia	7	9	6	0	0	0	6	0	0 (0.0%)	0.67	83%	100%	11-Jan-18	-
New Zealand	12	9	13	0	0	0	13	0	0 (0.0%)	1.44	38%	100%	02-Mar-18	-
Papua New Guinea	23	31	29	0	0	0	28	1	1 (3.4%)	0.94	45%	100%	04-May-18	5
Philippines	417	400	463	0	0	0	463	0	0 (0.0%)	1.16	68%	97%	26-Mar-18	-
Republic of Korea	70	68	68	0	0	0	68	0	0 (0.0%)	1.00	94%	100%	12-Mar-18	-
Singapore	7	6	7	0	0	0	7	0	0 (0.0%)	1.17	86%	100%	07-Feb-18	-
Viet Nam	382	234	385	0	0	0	384	1	1 (0.3%)	1.65	94%	89%	16-Mar-18	54
Pacific island countries and areas	20	11	16	0	0	0	13	3	3 (18.8%)	1.45	63%	100%	27-Apr-18	12
<b>Total</b>	<b>7030</b>	<b>3383</b>	<b>6656</b>	<b>0</b>	<b>2</b>	<b>1</b>	<b>6648</b>	<b>5</b>	<b>5 (0.1%)</b>	<b>1.97</b>	<b>90%</b>	<b>98%</b>		

- Number (%) of reported cases pending classification more than 90 days from date of onset of paralysis to date of last report
- Annualized non-polio AFP rate per 100 000 population under 15 years of age
- Percentage of reported cases with two stool specimens collected 24 hours apart and within 14 days of onset of paralysis
- Percentage of reported cases investigated within two days of notification
- Countries are expected to submit data at least once per month to WPRO

	Reached or surpass target
	Nearly reached target 0.5-0.99 for non-polio AFP rate; 60-79% for other indicators
	Substantially below target

Table 1B. Classification of AFP cases with onset in 2018 and key surveillance indicators

Country/area	2017	2018												
	Total reported cases	Annual expected cases <15 years of age	Total reported cases	Classification						Indicators			Latest report date	Days since last report <sup>5</sup>
				Confirmed wild poliovirus	Vaccine-derived poliovirus (VDPV)	Polio-compatible	Discarded (Non-polio)	Pending		Non-polio AFP rate <sup>2</sup>	% with adequate specimens <sup>3</sup>	% investigated ≤ 2 days of notification <sup>4</sup>		
								Total	> 90 days <sup>1</sup> # (%)					
≥ 1	≥ 80%	≥ 80%	≤ 30											
Australia	59	46	16	0	0	0	6	10	4 (25.0%)	1.00	44%	94%	04-May-18	5
Brunei Darussalam	1	1	0	-	-	-	-	-	-	-	-	-	15-Mar-18	55
Cambodia	57	44	14	0	0	0	2	12	0 (0.0%)	0.92	79%	93%	09-May-18	0
China	5278	2256	1124	0	0	0	255	869	273 (24.3%)	1.44	91%	99%	02-May-18	7
China, Hong Kong SAR	15	9	3	0	0	0	2	1	0 (0.0%)	0.96	100%	100%	09-May-18	0
China, Macao SAR	2	1	1	0	0	0	1	0	0 (0.0%)	2.89	100%	100%	09-May-18	0
Japan	0	161	0	-	-	-	-	-	-	-	-	-	-	-
Lao People's Democratic Republic	103	21	19	0	0	0	7	12	0 (0.0%)	2.61	89%	63%	27-Mar-18	43
Malaysia	154	77	32	0	0	0	6	26	3 (9.4%)	1.20	78%	56%	10-Apr-18	29
Mongolia	6	9	1	0	0	0	1	0	0 (0.0%)	0.32	100%	100%	10-Apr-18	29
New Zealand	13	9	2	0	0	0	0	2	0 (0.0%)	0.64	50%	100%	20-Apr-18	19
Papua New Guinea	29	34	11	0	0	0	5	6	0 (0.0%)	0.93	36%	91%	04-May-18	5
Philippines	463	338	46	0	0	0	22	24	2 (4.3%)	0.39	57%	96%	26-Mar-18	44
Republic of Korea	68	67	13	0	0	0	5	8	0 (0.0%)	0.56	92%	100%	11-Apr-18	28
Singapore	7	6	0	-	-	-	-	-	-	-	-	-	04-May-18	5
Viet Nam	385	234	52	0	0	0	16	36	3 (5.8%)	0.64	94%	87%	05-May-18	4
Pacific island countries and areas	16	11	0	-	-	-	-	-	-	-	-	-	27-Apr-18	12
<b>Total</b>	<b>6656</b>	<b>3324</b>	<b>1334</b>	<b>0</b>	<b>0</b>	<b>0</b>	<b>328</b>	<b>1006</b>	<b>285 (21.4%)</b>	<b>1.16</b>	<b>89%</b>	<b>97%</b>		

1. Number (%) of reported cases pending classification more than 90 days from date of onset of paralysis to date of last report
2. Annualized non-polio AFP rate per 100 000 population under 15 years of age
3. Percentage of reported cases with two stool specimens collected 24 hours apart and within 14 days of onset of paralysis
4. Percentage of reported cases investigated within two days of notification
5. Countries are expected to submit data at least once per month to WPRO

	Reached or surpass target
	Nearly reached target 0.5-0.99 for non-polio AFP rate; 60-79% for other indicators
	Substantially below target





Table 3. Laboratory confirmation of polio isolates from environmental samples in 2017–2018 <sup>1</sup>

Country/area	Intratyptic differentiation lab <sup>2</sup>	2017													2018															
		Total number of samples processed	Total number of samples with polio isolates	Polio isolates									NPEV	Pending ITD	Discordant pending sequencing	Total number of samples processed	Total number of samples with polio isolates	Polio isolates									NPEV	Pending ITD	Discordant pending sequencing	
				Type 1			Type 2			Type 3								Type 1			Type 2			Type 3						
				Wild	Sabin	VDPV	Wild	Sabin	VDPV	Wild	Sabin	VDPV						Wild	Sabin	VDPV	Wild	Sabin	VDPV	Wild	Sabin	VDPV				
Australia	VIDRL	6	2	0	0	0	0	0	1	0	1	0	4	0	0	17	2	0	2	0	0	0	0	0	0	0	0	12	0	0
China (total)		322	187	0	213	0	0	0	0	0	648	0	1144	0	0	45	37	0	28	0	0	0	0	0	114	1	132	0	0	
China, Fujian	Prov. Lab/CCDC	53	22	0	8	0	0	0	0	0	42	0	331	0	0	15	12	0	2	0	0	0	0	43	1	84	0	0		
China, Gansu	Prov. Lab/CCDC	12	10	0	10	0	0	0	0	0	29	0	18	0	0	2	1	0	1	0	0	0	0	2	0	7	0	0		
China, Guangdong	Prov. Lab/CCDC	48	39	0	18	0	0	0	0	0	87	0	108	0	0	16	14	0	11	0	0	0	0	34	0	32	0	0		
China, Guangxi	Prov. Lab/CCDC	36	20	0	22	0	0	0	0	0	36	0	94	0	0	0	-	-	-	-	-	-	-	-	-	-	-	-		
China, Heilongjiang	Prov. Lab/CCDC	42	17	0	12	0	0	0	0	0	34	0	112	0	0	4	3	0	1	0	0	0	0	6	0	3	0	0		
China, Shandong	Prov. Lab/CCDC	45	27	0	18	0	0	0	0	0	88	0	258	0	0	0	-	-	-	-	-	-	-	-	-	-	-	-		
China, Shanghai	Prov. Lab/CCDC	22	18	0	17	0	0	0	0	0	65	0	51	0	0	2	1	0	2	0	0	0	0	2	0	1	0	0		
China, Xinjiang	Prov. Lab/CCDC	36	34	0	108	0	0	0	0	0	267	0	115	0	0	6	6	0	11	0	0	0	0	27	0	5	0	0		
China, Yunnan	Prov. Lab/CCDC	28	0	-	-	-	-	-	-	-	-	-	57	0	0	0	-	-	-	-	-	-	-	-	-	-	-	-		
Malaysia	IMR	24	0	-	-	-	-	-	-	-	-	-	22	0	0	0	-	-	-	-	-	-	-	-	-	-	-	-		
Philippines	RITM	40	8	0	1	0	0	0	0	0	7	0	21	0	0	20	2	0	1	0	0	0	0	1	0	8	0	0		
<b>Total</b>		<b>392</b>	<b>197</b>	<b>0</b>	<b>214</b>	<b>0</b>	<b>0</b>	<b>0</b>	<b>1</b>	<b>0</b>	<b>656</b>	<b>0</b>	<b>1191</b>	<b>0</b>	<b>0</b>	<b>82</b>	<b>41</b>	<b>0</b>	<b>31</b>	<b>0</b>	<b>0</b>	<b>0</b>	<b>0</b>	<b>0</b>	<b>115</b>	<b>1</b>	<b>152</b>	<b>0</b>	<b>0</b>	

1. Based on year of collection of sample, if available. Otherwise, based on year of receipt at reference laboratory.

2. CCDC (Chinese Center for Disease Control and Prevention, China); IMR (Institute of Medical Research, Malaysia); RITM (Research Institute for Tropical Medicine, Philippines); VIDRL (Victorian Infectious Diseases Reference Laboratory, Australia)

Table 4. Vaccine-derived poliovirus<sup>1</sup> identified from laboratory testing<sup>2</sup>, 2000–2018

Country/area	2000–2009 <sup>3</sup>	2010	2011	2012	2013	2014	2015	2016	2017	2018
Australia									aVDPV2 (1 env)	
Cambodia	2006 - 1 Total - 2									
China	2009 - 1 Total - 27	aVDPV2 (3 AFP + 1 contact + 1 non-AFP) aVDPV3 (1 AFP + 1 non-AFP)	aVDPV1 (1 AFP) aVDPV2 (2 AFP + 1 contact) cVDPV2 (2 AFP) iVDPV2 (1 AFP + 1 non-AFP) iVDPV3 (1 AFP)	aVDPV1 (1 AFP) aVDPV2 (2 AFP) cVDPV2 (2 AFP + 1 contact) iVDPV2 + iVDPV3 (1 AFP)	aVDPV2 (1 non-AFP) iVDPV2 + iVDPV3 (1 AFP)	aVDPV1 (1 non-AFP) aVDPV2 (2 AFP) iVDPV3 (1 AFP)	aVDPV1 (1 AFP) aVDPV2 (1 AFP) iVDPV2 (1 AFP) aVDPV2 (1 env)	aVDPV3 (1 AFP)	aVDPV3 (1 AFP) iVDPV3 (1 AFP) <sup>4</sup>	aVDPV3 (1 env)
China, Hong Kong SAR	2005 - 3									
Japan	2005 - 1 Total - 2									
Lao People's Democratic Republic	2004 - 3						cVDPV1 (8 AFP + 21 contacts)	cVDPV1 (3 AFP + 4 contacts)		
Mongolia	2003 - 1									
Philippines	2001 - 3					aVDPV2 (1 AFP)				
Viet Nam				aVDPV2 (2 AFP)						

1. Prefix letter refers to the VDPV category: "cVDPV" = circulating VDPV, "iVDPV" = immunodeficiency-associated VDPV, "aVDPV" = ambiguous VDPV, "vVDPV" = pending.

Suffix number refers to the poliovirus serotype (types 1, 2 or 3).

2. Source of specimens could be AFP cases, contacts, non-AFP cases or environmental

3. Refers to year of last VDPV case, and aggregate total of VDPV cases for 2000-2009

4. Continuous excretion for more than 4 months; potential immunodeficient person.