

HIGHLIGHTS

71st session of the World Health Assembly adopts resolution on polio

The Seventy-first World Health Assembly (WHA) took place on 21–26 May 2018 in Geneva, Switzerland.

At the 71st WHA, the ministers of health and delegates reviewed progress being achieved through national emergency action plans in remaining polio endemic countries. Delegates noted that wild poliovirus transmission is now at the lowest ever levels in history.

To prepare for a polio-free world, Member States adopted a landmark resolution on poliovirus containment, and endorsed the 5-year strategic action plan on polio transition, which outlines how essential polio functions such as surveillance, laboratory networks and core infrastructure can support the implementation of the Post-Certification Strategy (PCS) to sustain a polio-free world, and can be integrated into the immunization or health emergencies' programme, or mainstreamed into national health systems.

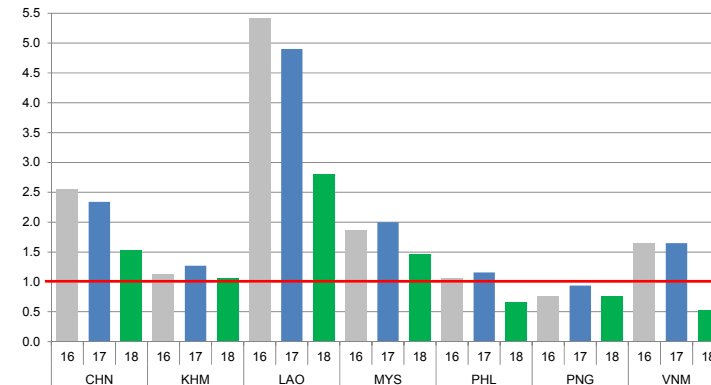
Member States expressed overwhelming commitment to fully implement and finance all strategies to secure a lasting polio-free world in the very near term.



CONTACT US

Expanded Programme on Immunization
Regional Office for the Western Pacific
World Health Organization
P.O. Box 2932, 1000 Manila, Philippines
Phone: +63 2 5288001
Fax: +63 2 5211036, 5260279
Email: wproepidata@who.int
Web: www.wpro.who.int/immunization

Chart 1. Non-polio AFP rate (per 100 000 persons < 15 years of age), 2016–2018*



* AFP rate annualized as of week 22

Chart 2. Adequate specimen collection rate, 2016–2018

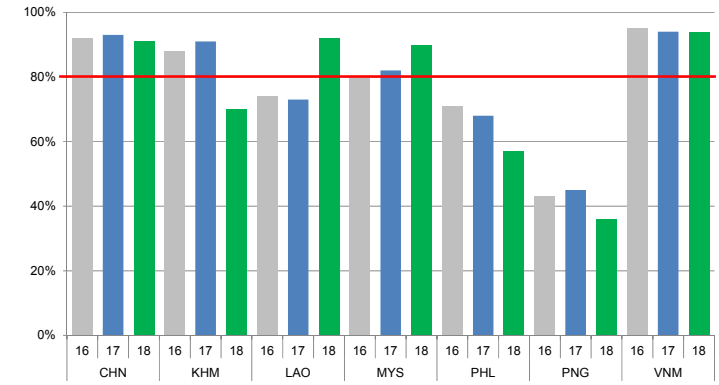


Chart 3. Percentage of reported AFP cases by number of polio vaccination doses, 2018

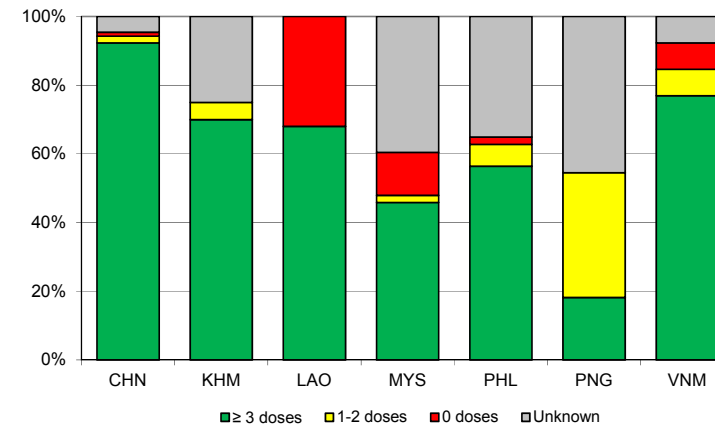
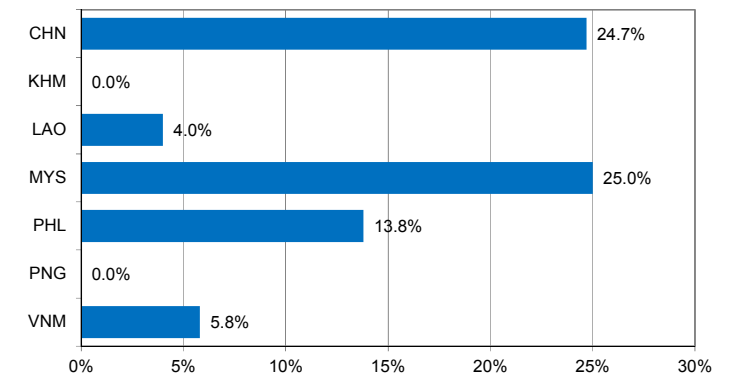


Chart 4. Percentage of reported AFP cases with pending classification > 90 days after onset, 2018



Note: Priority countries were selected for the charts. Official WHO acronyms have been used for abbreviation: CHN (China), KHM (Cambodia), LAO (Lao People's Democratic Republic), MYS (Malaysia), PHL (Philippines), PNG (Papua New Guinea), and VNM (Viet Nam).

Table 1A. Classification of AFP cases with onset in 2017 and key surveillance indicators

Country/area	2016		2017											
	Total reported cases	Annual expected cases <15 years of age	Total reported cases	Classification						Indicators			Latest report date ⁴	Days since last report ⁵
				Confirmed wild poliovirus	Vaccine-derived poliovirus (VDPV)	Polio-compatible	Discarded (Non-polio)	Pending		Non-polio AFP rate	% with adequate specimens ²	% investigated ≤ 2 days of notification ³		
								Total	> 90 days ¹ # (%)					≥ 1
Australia	62	45	59	0	0	1	58	0	0 (0.0%)	1.31	37%	97%	19-Mar-18	-
Brunei Darrusalam	1	1	1	0	0	0	1	0	0 (0.0%)	1.00	0%	100%	09-Jan-18	-
Cambodia	51	45	57	0	0	0	57	0	0 (0.0%)	1.27	91%	95%	07-Feb-18	-
China	5691	2256	5278	0	2	0	5276	0	0 (0.0%)	2.34	93%	100%	02-May-18	-
China, Hong Kong SAR	10	8	15	0	0	0	15	0	0 (0.0%)	1.88	80%	100%	01-Mar-18	-
China, Macao SAR	1	1	2	0	0	0	2	0	0 (0.0%)	2.00	50%	100%	18-Jan-18	-
Japan	-	161	-	-	-	-	-	-	-	-	-	-	-	-
Lao People's Democratic Republic	133	21	103	0	0	0	103	0	0 (0.0%)	4.90	73%	73%	27-Feb-18	-
Malaysia	143	77	154	0	0	0	154	0	0 (0.0%)	2.00	82%	90%	06-Mar-18	-
Mongolia	7	9	6	0	0	0	6	0	0 (0.0%)	0.67	83%	100%	11-Jan-18	-
New Zealand	12	9	13	0	0	0	13	0	0 (0.0%)	1.44	38%	100%	02-Mar-18	-
Papua New Guinea	23	31	29	0	0	0	29	0	0 (0.0%)	0.94	45%	100%	24-May-18	-
Philippines	417	400	463	0	0	0	463	0	0 (0.0%)	1.16	68%	97%	26-Mar-18	-
Republic of Korea	70	68	68	0	0	0	68	0	0 (0.0%)	1.00	94%	100%	12-Mar-18	-
Singapore	7	6	7	0	0	0	7	0	0 (0.0%)	1.17	86%	100%	07-Feb-18	-
Viet Nam	382	234	385	0	0	0	384	1	1 (0.3%)	1.65	94%	89%	05-May-18	31
Pacific island countries and areas	20	11	16	0	0	0	16	0	0 (0.0%)	1.45	63%	100%	16-May-18	-
Total	7030	3383	6656	0	2	1	6652	1	1 (0.0%)	1.97	90%	98%		

- Number (%) of reported cases pending classification more than 90 days from date of onset of paralysis to date of last report
- Percentage of reported cases with two stool specimens collected 24 hours apart and within 14 days of onset of paralysis
- Percentage of reported cases investigated within two days of notification
- Report date is fixed as soon as all cases for the year have been classified
- Countries are expected to submit data at least once per month to WPRO




	Reached or surpass target
	Nearly reached target 0.5-0.99 for non-polio AFP rate; 60-79% for other indicators
	Substantially below target

Table 1B. Classification of AFP cases with onset in 2018 and key surveillance indicators

Country/area	2017		2018											
	Total reported cases	Annual expected cases <15 years of age	Total reported cases	Classification						Indicators			Latest report date	Days since last report ⁵
				Confirmed wild poliovirus	Vaccine-derived poliovirus (VDPV)	Polio-compatible	Discarded (Non-polio)	Pending		Non-polio AFP rate ²	% with adequate specimens ³	% investigated ≤ 2 days of notification ⁴		
								Total	> 90 days ¹ # (%)					
≥ 1	≥ 80%	≥ 80%	≤ 30											
Australia	59	46	24	0	0	0	6	18	4 (16.7%)	1.23	33%	75%	01-Jun-18	4
Brunei Darrusalam	1	1	0	-	-	-	-	-	-	-	-	-	15-Mar-18	82
Cambodia	57	44	20	0	0	0	2	18	0 (0.0%)	1.07	70%	95%	24-May-18	12
China	5278	2256	1464	0	0	0	399	1065	361 (24.7%)	1.53	91%	99%	30-May-18	6
China, Hong Kong SAR	15	9	4	0	0	0	3	1	0 (0.0%)	1.05	100%	75%	31-May-18	5
China, Macao SAR	2	1	1	0	0	0	1	0	0 (0.0%)	2.36	100%	100%	11-May-18	25
Japan	-	161	-	-	-	-	-	-	-	-	-	-	-	-
Lao People's Democratic Republic	103	21	25	0	0	0	15	10	1 (4.0%)	2.81	92%	68%	22-May-18	14
Malaysia	154	77	48	0	0	0	10	38	12 (25.0%)	1.47	90%	63%	23-May-18	13
Mongolia	6	9	2	0	0	0	1	1	0 (0.0%)	0.53	100%	100%	31-May-18	5
New Zealand	13	9	2	0	0	0	0	2	0 (0.0%)	0.53	50%	100%	20-Apr-18	46
Papua New Guinea	29	34	11	0	0	0	5	6	0 (0.0%)	0.76	36%	91%	28-May-18	8
Philippines	463	338	94	0	0	0	58	36	13 (13.8%)	0.66	57%	96%	22-May-18	14
Republic of Korea	68	67	19	0	0	0	9	10	0 (0.0%)	0.67	89%	100%	10-May-18	26
Singapore	7	6	0	-	-	-	-	-	-	-	-	-	10-May-18	26
Viet Nam	385	234	52	0	0	0	16	36	3 (5.8%)	0.53	94%	87%	05-May-18	31
Pacific island countries and areas	16	11	1	0	0	0	1	0	0 (0.0%)	0.21	0%	100%	16-May-18	20
Total	6656	3324	1767	0	0	0	526	1241	394 (22.3%)	1.26	88%	97%		

1. Number (%) of reported cases pending classification more than 90 days from date of onset of paralysis to date of last report
2. Annualized non-polio AFP rate per 100 000 population under 15 years of age
3. Percentage of reported cases with two stool specimens collected 24 hours apart and within 14 days of onset of paralysis
4. Percentage of reported cases investigated within two days of notification
5. Countries are expected to submit data at least once per month to WPRO

	Reached or surpass target
	Nearly reached target 0.5-0.99 for non-polio AFP rate; 60-79% for other indicators
	Substantially below target

Table 2B. Laboratory investigation of stool samples from AFP cases with onset in 2018 and key laboratory indicators

Country/area	Polio laboratory	Total no. of AFP cases with specimens	Results of virus isolation for AFP cases									Intratyphic differentiation/ Sequencing laboratory ¹	No. of isolates received	Results of intratyphic differentiation (ITD)/sequencing for virus isolates																		
			L20B positive	L20B positive + NPEV	NPEV only	Negative	Pending ≤ 14 days	Pending > 14 days	% results reported ≤ 14 days	% specimens positive for NPEV	Latest report date			Type 1			Type 2			Type 3			NPEV ²	Pending ITD	Discordant pending sequencing	% ITD results reported ≤ 7 days of receipt						
														Wild	Sabin	VDPV	Wild	Sabin	VDPV	Wild	Sabin	VDPV										
Australia	VIDRL	12	0	0	0	10	2	1	100%	0%	31-May-18	VIDRL	0	-	-	-	-	-	-	-	-	-	-	-	-	-	-	-	-	-	-	
Brunei Darussalam	VIDRL	0	-	-	-	-	-	-	-	-	02-May-18	VIDRL	0	-	-	-	-	-	-	-	-	-	-	-	-	-	-	-	-	-	-	
Cambodia	NIID	14	0	0	3	11	0	0	100%	18%	24-May-18	NIID	0	-	-	-	-	-	-	-	-	-	-	-	-	-	-	-	-	-	-	
China (total)		1437	5	0	54	1292	0	86	97%	3%	30-May-18		14	0	2	0	0	0	0	11	1	0	0	0	0	0	0	0	0	100%		
China, Anhui	Prov. Lab	72	0	0	1	66	0	5	100%	1%		Prov. Lab/CCDC	0	-	-	-	-	-	-	-	-	-	-	-	-	-	-	-	-	-	-	
China, Beijing	Prov. Lab	9	0	0	0	7	0	2	100%	0%		Prov. Lab/CCDC	0	-	-	-	-	-	-	-	-	-	-	-	-	-	-	-	-	-	-	-
China, Chongqing	Prov. Lab	18	0	0	0	16	0	2	88%	0%		Prov. Lab/CCDC	0	-	-	-	-	-	-	-	-	-	-	-	-	-	-	-	-	-	-	-
China, Fujian	Prov. Lab	48	1	0	1	43	0	3	100%	2%		Prov. Lab/CCDC	1	0	0	0	0	0	0	1	0	0	0	0	0	0	0	0	0	100%		
China, Gansu	Prov. Lab	26	0	0	2	21	0	3	100%	9%		Prov. Lab/CCDC	0	-	-	-	-	-	-	-	-	-	-	-	-	-	-	-	-	-	-	-
China, Guangdong	Prov. Lab	108	0	0	1	103	0	4	94%	1%		Prov. Lab/CCDC	0	-	-	-	-	-	-	-	-	-	-	-	-	-	-	-	-	-	-	-
China, Guangxi	Prov. Lab	58	0	0	3	53	0	2	96%	5%		Prov. Lab/CCDC	0	-	-	-	-	-	-	-	-	-	-	-	-	-	-	-	-	-	-	-
China, Guizhou	Prov. Lab	57	0	0	1	53	0	3	98%	1%		Prov. Lab/CCDC	0	-	-	-	-	-	-	-	-	-	-	-	-	-	-	-	-	-	-	-
China, Hebei	Prov. Lab	85	0	0	11	73	0	1	100%	11%		Prov. Lab/CCDC	0	-	-	-	-	-	-	-	-	-	-	-	-	-	-	-	-	-	-	-
China, Heilongjiang	Prov. Lab	31	0	0	2	28	0	1	100%	7%		Prov. Lab/CCDC	0	-	-	-	-	-	-	-	-	-	-	-	-	-	-	-	-	-	-	-
China, Henan	Prov. Lab	153	1	0	8	144	0	0	100%	4%		Prov. Lab/CCDC	2	0	0	0	0	0	0	2	0	0	0	0	0	0	0	0	0	100%		
China, Hubei	Prov. Lab	46	0	0	2	32	0	12	97%	6%		Prov. Lab/CCDC	0	-	-	-	-	-	-	-	-	-	-	-	-	-	-	-	-	-	-	-
China, Hunan	Prov. Lab	44	0	0	6	37	0	1	95%	12%		Prov. Lab/CCDC	0	-	-	-	-	-	-	-	-	-	-	-	-	-	-	-	-	-	-	-
China, Jiangsu	Prov. Lab	55	0	0	0	48	0	7	100%	0%		Prov. Lab/CCDC	2	0	0	0	0	0	0	1	1	0	0	0	0	0	0	0	0	100%		
China, Jiangxi	Prov. Lab	42	0	0	0	40	0	2	94%	0%		Prov. Lab/CCDC	1	0	0	0	0	0	0	1	0	0	0	0	0	0	0	0	0	100%		
China, Jilin	Prov. Lab	20	1	0	0	19	0	0	100%	0%		Prov. Lab/CCDC	4	0	2	0	0	0	0	2	0	0	0	0	0	0	0	0	0	100%		
China, Neimongol	Prov. Lab	25	0	0	1	24	0	0	100%	4%		Prov. Lab/CCDC	0	-	-	-	-	-	-	-	-	-	-	-	-	-	-	-	-	-	-	-
China, Ningxia	Prov. Lab	8	0	0	0	8	0	0	100%	0%		Prov. Lab/CCDC	0	-	-	-	-	-	-	-	-	-	-	-	-	-	-	-	-	-	-	-
China, Shaanxi	Prov. Lab	30	0	0	0	26	0	4	92%	0%		Prov. Lab/CCDC	0	-	-	-	-	-	-	-	-	-	-	-	-	-	-	-	-	-	-	-
China, Shandong	Prov. Lab	120	1	0	0	118	0	1	100%	0%		Prov. Lab/CCDC	1	0	0	0	0	0	0	1	0	0	0	0	0	0	0	0	0	100%		
China, Shanghai	Prov. Lab	9	0	0	0	9	0	0	100%	0%		Prov. Lab/CCDC	0	-	-	-	-	-	-	-	-	-	-	-	-	-	-	-	-	-	-	-
China, Shanxi	Prov. Lab	69	0	0	0	68	0	1	96%	0%		Prov. Lab/CCDC	0	-	-	-	-	-	-	-	-	-	-	-	-	-	-	-	-	-	-	-
China, Sichuan	Prov. Lab	79	0	0	2	56	0	21	96%	3%		Prov. Lab/CCDC	0	-	-	-	-	-	-	-	-	-	-	-	-	-	-	-	-	-	-	-
China, Tianjin	Prov. Lab	10	0	0	0	10	0	0	100%	0%		Prov. Lab/CCDC	0	-	-	-	-	-	-	-	-	-	-	-	-	-	-	-	-	-	-	-
China, Xinjiang	Prov. Lab	42	1	0	2	38	0	1	83%	5%		Prov. Lab/CCDC	2	0	0	0	0	0	0	2	0	0	0	0	0	0	0	0	0	100%		
China, Yunnan	Prov. Lab	85	0	0	9	68	0	8	87%	10%		Prov. Lab/CCDC	1	0	0	0	0	0	0	1	0	0	0	0	0	0	0	0	0	100%		
China, Zhejiang	Prov. Lab	45	0	0	1	42	0	2	100%	2%		Prov. Lab/CCDC	0	-	-	-	-	-	-	-	-	-	-	-	-	-	-	-	-	-	-	-
China, Hainan	Prov. Lab	13	0	0	1	12	0	0	100%	4%		CCDC	0	-	-	-	-	-	-	-	-	-	-	-	-	-	-	-	-	-	-	-
China, Liaoning	Prov. Lab	19	0	0	0	19	0	0	100%	0%		CCDC	0	-	-	-	-	-	-	-	-	-	-	-	-	-	-	-	-	-	-	-
China, Qinghai	Prov. Lab	10	0	0	0	10	0	0	100%	0%		CCDC	0	-	-	-	-	-	-	-	-	-	-	-	-	-	-	-	-	-	-	-
China, Tibet	Prov. Lab	1	0	0	0	1	0	0	100%	0%		CCDC	0	-	-	-	-	-	-	-	-	-	-	-	-	-	-	-	-	-	-	-
China, Hong Kong SAR	PHLC	4	0	0	0	3	1	0	100%	0%	31-May-18	PHLC	0	-	-	-	-	-	-	-	-	-	-	-	-	-	-	-	-	-	-	-
China, Macao SAR	PHLC	1	0	0	0	1	0	0	100%	0%	13-Apr-18	PHLC	0	-	-	-	-	-	-	-	-	-	-	-	-	-	-	-	-	-	-	-
Japan	NIID	-	-	-	-	-	-	-	-	-	-	NIID	-	-	-	-	-	-	-	-	-	-	-	-	-	-	-	-	-	-	-	-
Lao People's Democratic Republic	NIID	34	1	0	3	30	0	0	99%	6%	26-Apr-18	NIID	1	0	0	0	0	0	0	1	0	0	0	0	0	0	0	0	0	100%		
Malaysia	IMR	58	0	0	6	52	0	0	97%	8%	25-May-18	IMR	0	-	-	-	-	-	-	-	-	-	-	-	-	-	-	-	-	-	-	-
Mongolia	PHI	3	0	0	2	1	0	0	100%	67%	04-Jun-18	NIID	0	-	-	-	-	-	-	-	-	-	-	-	-	-	-	-	-	-	-	-
New Zealand	IESR	2	0	0	0	2	0	0	100%	0%	31-May-18	IESR	0	-	-	-	-	-	-	-	-	-	-	-	-	-	-	-	-	-	-	-
Papua New Guinea	VIDRL	7	1	0	1	5	0	0	100%	18%	25-May-18	VIDRL	2	0	0	2	0	0	0	0	0	0	0	0	0	0	0	0	0	100%		
Philippines	RITM	143	1	1	6	129	6	0	94%	3%	29-May-18	RITM	6	0	2	0	0	0	0	4	0	0	0	0	0	0	0	0	0	100%		
Republic of Korea	NIH	19	0	0	0	18	1	0	89%	0%	10-May-18	NIH	0	-	-	-	-	-	-	-	-	-	-	-	-	-	-	-	-	-	-	-
Singapore	SGH	0	-	-	-	-	-	-	-	-	01-Jun-18	SGH	0	-	-	-	-	-	-	-	-	-	-	-	-	-	-	-	-	-	-	-
Viet Nam (North)	NIHE	38	1	0	5	30	2	0	100%	14%	18-May-18	NIHE	1	0	1	0	0	0	0	0	0	0	0	0	0	0	0	0	0	100%		
Viet Nam (South)	PI	50	2	0	3	44	1	0	100%	6%	04-Jun-18	PI	4	0	0	0	0	0	0	4	0	0	0	0	0	0	0	0	0	100%		
Pacific island countries and areas	VIDRL	1	0	0	0	1	0	0	100%	0%	02-May-18	VIDRL	0	-	-	-	-	-	-	-	-	-	-	-	-	-	-	-	-	-	-	-
Total		1823	11	1	83	1629	13	87	97%	4%			28	0	5	2	0	0	0	0	20	1	0	0	0	0	0	0	0	100%		

1. CCDC (Chinese Center for Disease Control and Prevention, China); IESR (Institute of Environmental Science and Research, New Zealand); IMR (Institute of Medical Research, Malaysia); NIH (National Institute of Health, Republic of Korea); NIHE (National Institute of Hygiene and Epidemiology, Ha Noi, Viet Nam); NIID (National Institute of Infectious Diseases, Japan); PHI (Public Health Institute, Mongolia); PHLC (Public Health Laboratory Center, China, Hong Kong SAR); PI (Pasteur Institute, Ho Chi Minh, Viet Nam

Table 3. Laboratory confirmation of polio isolates from environmental samples in 2017–2018 ¹

Country/area	Intratyptic differentiation lab ²	2017													2018															
		Total number of samples processed	Total number of samples with polio isolates	Polio isolates									NPEV	Pending ITD	Discordant pending sequencing	Total number of samples processed	Total number of samples with polio isolates	Polio isolates									NPEV	Pending ITD	Discordant pending sequencing	
				Type 1			Type 2			Type 3								Type 1			Type 2			Type 3						
				Wild	Sabin	VDPV	Wild	Sabin	VDPV	Wild	Sabin	VDPV						Wild	Sabin	VDPV	Wild	Sabin	VDPV	Wild	Sabin	VDPV				
Australia	VIDRL	6	2	0	0	0	0	0	1	0	1	0	4	0	0	17	2	0	2	0	0	0	0	0	0	0	0	12	0	0
China (total)		322	187	0	213	0	0	0	0	0	648	0	1144	0	0	45	37	0	28	0	0	0	0	0	114	1	132	0	0	
China, Fujian	Prov. Lab/CCDC	53	22	0	8	0	0	0	0	0	42	0	331	0	0	15	12	0	2	0	0	0	0	0	43	1	84	0	0	
China, Gansu	Prov. Lab/CCDC	12	10	0	10	0	0	0	0	0	29	0	18	0	0	2	1	0	1	0	0	0	0	0	2	0	7	0	0	
China, Guangdong	Prov. Lab/CCDC	48	39	0	18	0	0	0	0	0	87	0	108	0	0	16	14	0	11	0	0	0	0	0	34	0	32	0	0	
China, Guangxi	Prov. Lab/CCDC	36	20	0	22	0	0	0	0	0	36	0	94	0	0	0	-	-	-	-	-	-	-	-	-	-	-	-	-	
China, Heilongjiang	Prov. Lab/CCDC	42	17	0	12	0	0	0	0	0	34	0	112	0	0	4	3	0	1	0	0	0	0	0	6	0	3	0	0	
China, Shandong	Prov. Lab/CCDC	45	27	0	18	0	0	0	0	0	88	0	258	0	0	0	-	-	-	-	-	-	-	-	-	-	-	-	-	
China, Shanghai	Prov. Lab/CCDC	22	18	0	17	0	0	0	0	0	65	0	51	0	0	2	1	0	2	0	0	0	0	0	2	0	1	0	0	
China, Xinjiang	Prov. Lab/CCDC	36	34	0	108	0	0	0	0	0	267	0	115	0	0	6	6	0	11	0	0	0	0	0	27	0	5	0	0	
China, Yunnan	Prov. Lab/CCDC	28	0	-	-	-	-	-	-	-	-	-	57	0	0	0	-	-	-	-	-	-	-	-	-	-	-	-	-	
Malaysia	IMR	24	0	-	-	-	-	-	-	-	-	-	22	0	0	0	-	-	-	-	-	-	-	-	-	-	-	-	-	
Philippines	RITM	40	8	0	1	0	0	0	0	0	7	0	21	0	0	25	3	0	2	0	0	0	0	0	1	0	11	0	0	
Total		392	197	0	214	0	0	0	1	0	656	0	1191	0	0	87	42	0	32	0	0	0	0	0	115	1	155	0	0	

1. Based on year of collection of sample, if available. Otherwise, based on year of receipt at reference laboratory.

2. CCDC (Chinese Center for Disease Control and Prevention, China); IMR (Institute of Medical Research, Malaysia); RITM (Research Institute for Tropical Medicine, Philippines); VIDRL (Victorian Infectious Diseases Reference Laboratory, Australia)

Table 4. Vaccine-derived poliovirus¹ identified from laboratory testing², 2000–2018

Country/area	2000–2009 ³	2010	2011	2012	2013	2014	2015	2016	2017	2018
Australia									aVDPV2 (1 env)	
Cambodia	2006 - 1 Total - 2									
China	2009 - 1 Total - 27	aVDPV2 (3 AFP + 1 contact + 1 non-AFP) aVDPV3 (1 AFP + 1 non-AFP)	aVDPV1 (1 AFP) aVDPV2 (2 AFP + 1 contact) cVDPV2 (2 AFP) iVDPV2 (1 AFP + 1 non-AFP) iVDPV3 (1 AFP)	aVDPV1 (1 AFP) aVDPV2 (2 AFP) cVDPV2 (2 AFP + 1 contact) iVDPV2 + iVDPV3 (1 AFP)	aVDPV2 (1 non-AFP) iVDPV2 + iVDPV3 (1 AFP)	aVDPV1 (1 non-AFP) aVDPV2 (2 AFP) iVDPV3 (1 AFP)	aVDPV1 (1 AFP) aVDPV2 (1 AFP) iVDPV2 (1 AFP) aVDPV2 (1 env)	aVDPV3 (1 AFP)	aVDPV3 (1 AFP) iVDPV3 (1 AFP) ⁴	?VDPV3 (1 AFP) aVDPV3 (1 env)
China, Hong Kong SAR	2005 - 3									
Japan	2005 - 1 Total - 2									
Lao People's Democratic Republic	2004 - 3						cVDPV1 (8 AFP + 21 contacts)	cVDPV1 (3 AFP + 4 contacts)		
Mongolia	2003 - 1									
Papua New Guinea										?VDPV1 (1 AFP)
Philippines	2001 - 3					aVDPV2 (1 AFP)				
Viet Nam				aVDPV2 (2 AFP)						

1. Prefix letter refers to the VDPV category: "cVDPV" = circulating VDPV, "iVDPV" = immunodeficiency-associated VDPV, "aVDPV" = ambiguous VDPV, "?VDPV" = pending. Suffix number refers to the poliovirus serotype (types 1, 2 or 3).

2. Source of specimens could be AFP cases, contacts, non-AFP cases or environmental

3. Refers to year of last VDPV case, and aggregate total of VDPV cases for 2000-2009

4. Continuous excretion for 4 months; potential immunodeficient person.