

HIGHLIGHTS

27th Meeting of the Technical Advisory Group on Immunization and Vaccine-preventable Diseases in the Western Pacific Region 19–22 June 2018 - Manila, Philippines

The 27th meeting of the Technical Advisory Group (TAG) was held in Manila on 19-22 June 2018. The TAG reviewed the progress towards achieving regional immunization goals; discussed critical issues and priority actions; as well as identified opportunities to enhance collaboration and coordination among immunization partners.

The TAG acknowledged that overall population immunity against poliovirus in the Region remains quite high, performance of AFP surveillance had been well above the regional targets for the main indicators. The TAG commended efforts of the Philippines and Viet Nam in establishing environmental surveillance to monitor circulation of poliovirus and congratulated the Region for having successfully completed Phase I of the Global Action Plan (GAPIII) for destruction or containment of wild poliovirus (WPV) and vaccine-derived poliovirus (VDPV) type 2.

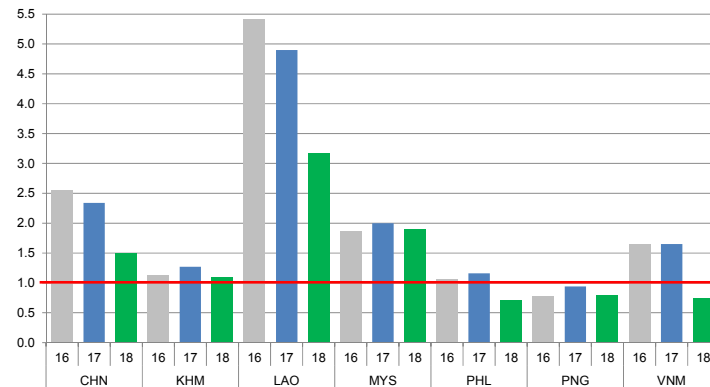
The TAG also noted that despite the achievements and progress made in sustaining polio-free status there are remaining issues and challenges which should be thoroughly addressed by the WHO secretariat and Members States.



CONTACT US

Expanded Programme on Immunization
Regional Office for the Western Pacific
World Health Organization
P.O. Box 2932, 1000 Manila, Philippines
Phone: +63 2 5288001
Fax: +63 2 5211036, 5260279
Email: wproepidata@who.int
Web: www.wpro.who.int/immunization

Chart 1. Non-polio AFP rate (per 100 000 persons < 15 years of age), 2016–2018*



* AFP rate annualized as of week 25

Chart 2. Adequate specimen collection rate, 2016–2018

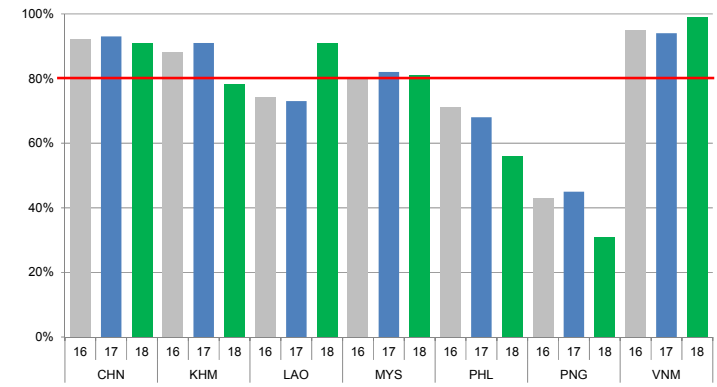


Chart 3. Percentage of reported AFP cases by number of polio vaccination doses, 2018

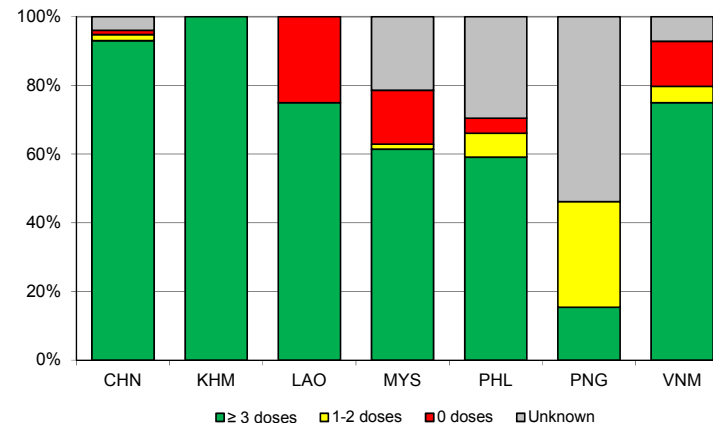
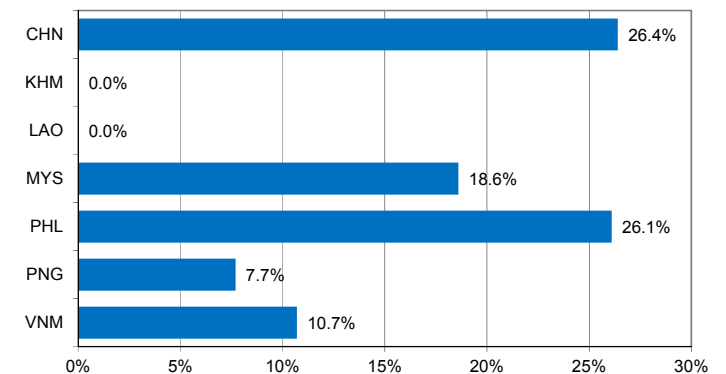


Chart 4. Percentage of reported AFP cases with pending classification > 90 days after onset, 2018



Note: Priority countries were selected for the charts. Official WHO acronyms have been used for abbreviation: CHN (China), KHM (Cambodia), LAO (Lao People's Democratic Republic), MYS (Malaysia), PHL (Philippines), PNG (Papua New Guinea), and VNM (Viet Nam).

Table 1A. Classification of AFP cases with onset in 2017 and key surveillance indicators

Country/area	2016		2017											
	Total reported cases	Annual expected cases <15 years of age	Total reported cases	Classification						Indicators			Latest report date ⁴	Days since last report ⁵
				Confirmed wild poliovirus	Vaccine-derived poliovirus (VDPV)	Polio-compatible	Discarded (Non-polio)	Pending		Non-polio AFP rate	% with adequate specimens ²	% investigated ≤ 2 days of notification ³		
								Total	> 90 days ¹ # (%)					
Australia	62	45	60	0	0	1	58	1	1 (1.7%)	1.33	37%	97%	21-Jun-18	5
Brunei Darussalam	1	1	1	0	0	0	1	0	0 (0.0%)	1.00	0%	100%	09-Jan-18	-
Cambodia	51	45	57	0	0	0	57	0	0 (0.0%)	1.27	91%	95%	07-Feb-18	-
China	5691	2256	5278	0	2	0	5276	0	0 (0.0%)	2.34	93%	100%	02-May-18	-
China, Hong Kong SAR	10	8	15	0	0	0	15	0	0 (0.0%)	1.88	80%	100%	01-Mar-18	-
China, Macao SAR	1	1	2	0	0	0	2	0	0 (0.0%)	2.00	50%	100%	18-Jan-18	-
Japan	-	161	-	-	-	-	-	-	-	-	-	-	-	-
Lao People's Democratic Republic	133	21	103	0	0	0	103	0	0 (0.0%)	4.90	73%	73%	27-Feb-18	-
Malaysia	143	77	154	0	0	0	154	0	0 (0.0%)	2.00	82%	90%	06-Mar-18	-
Mongolia	7	9	6	0	0	0	6	0	0 (0.0%)	0.67	83%	100%	11-Jan-18	-
New Zealand	12	9	13	0	0	0	13	0	0 (0.0%)	1.44	38%	100%	02-Mar-18	-
Papua New Guinea	23	31	29	0	0	0	29	0	0 (0.0%)	0.94	45%	100%	24-May-18	-
Philippines	417	400	462	0	0	0	462	0	0 (0.0%)	1.16	68%	97%	21-Jun-18	-
Republic of Korea	70	68	68	0	0	0	68	0	0 (0.0%)	1.00	94%	100%	12-Mar-18	-
Singapore	7	6	7	0	0	0	7	0	0 (0.0%)	1.17	86%	100%	07-Feb-18	-
Viet Nam	382	234	385	0	0	0	385	0	0 (0.0%)	1.65	94%	89%	13-Jun-18	-
Pacific island countries and areas	20	11	16	0	0	0	16	0	0 (0.0%)	1.45	63%	100%	16-May-18	-
Total	7030	3383	6656	0	2	1	6652	1	1 (0.0%)	1.97	90%	98%		

- Number (%) of reported cases pending classification more than 90 days from date of onset of paralysis to date of last report
- Percentage of reported cases with two stool specimens collected 24 hours apart and within 14 days of onset of paralysis
- Percentage of reported cases investigated within two days of notification
- Report date is fixed as soon as all cases for the year have been classified
- Countries are expected to submit data at least once per month to WPRO

	Reached or surpass target
	Nearly reached target 0.5-0.99 for non-polio AFP rate; 60-79% for other indicators
	Substantially below target

Table 1B. Classification of AFP cases with onset in 2018 and key surveillance indicators

Country/area	2017		2018											
	Total reported cases	Annual expected cases <15 years of age	Total reported cases	Classification						Indicators			Latest report date	Days since last report ⁵
				Confirmed wild poliovirus	Vaccine-derived poliovirus (VDPV)	Polio-compatible	Discarded (Non-polio)	Pending		Non-polio AFP rate ²	% with adequate specimens ³	% investigated ≤ 2 days of notification ⁴		
								Total	> 90 days ¹ # (%)					
≥ 1	≥ 80%	≥ 80%	≤ 30											
Australia	60	46	27	0	0	0	15	12	3 (11.1%)	1.22	37%	78%	21-Jun-18	5
Brunei Darussalam	1	1	0	-	-	-	-	-	-	-	-	-	15-Mar-18	103
Cambodia	57	44	23	0	0	0	18	5	0 (0.0%)	1.09	78%	96%	21-Jun-18	5
China	5278	2256	1627	0	0	0	544	1083	430 (26.4%)	1.50	91%	100%	13-Jun-18	13
China, Hong Kong SAR	15	9	4	0	0	0	3	1	0 (0.0%)	0.92	100%	100%	15-Jun-18	11
China, Macao SAR	2	1	1	0	0	0	1	0	0 (0.0%)	2.08	100%	100%	19-Jun-18	7
Japan	-	161	-	-	-	-	-	-	-	-	-	-	-	-
Lao People's Democratic Republic	103	21	32	0	0	0	22	10	0 (0.0%)	3.17	91%	72%	18-Jun-18	8
Malaysia	154	77	70	0	0	0	30	40	13 (18.6%)	1.89	81%	71%	25-Jun-18	1
Mongolia	6	9	2	0	0	0	1	1	0 (0.0%)	0.46	100%	100%	31-May-18	26
New Zealand	13	9	4	0	0	0	0	4	2 (50.0%)	0.92	50%	100%	26-Jun-18	0
Papua New Guinea	29	34	13	0	0	0	5	8	1 (7.7%)	0.80	31%	85%	18-Jun-18	8
Philippines	462	338	115	0	0	0	76	39	30 (26.1%)	0.71	56%	96%	25-Jun-18	1
Republic of Korea	68	67	23	0	0	0	19	4	0 (0.0%)	0.71	87%	100%	12-Jun-18	14
Singapore	7	6	2	0	0	0	0	2	0 (0.0%)	0.69	100%	100%	08-Jun-18	18
Viet Nam	385	234	84	0	0	0	22	62	9 (10.7%)	0.75	99%	86%	13-Jun-18	13
Pacific island countries and areas	16	11	1	0	0	0	1	0	0 (0.0%)	0.19	0%	100%	16-May-18	41
Total	6656	3324	2028	0	0	0	757	1271	488 (24.1%)	1.27	88%	97%		

1. Number (%) of reported cases pending classification more than 90 days from date of onset of paralysis to date of last report
2. Annualized non-polio AFP rate per 100 000 population under 15 years of age
3. Percentage of reported cases with two stool specimens collected 24 hours apart and within 14 days of onset of paralysis
4. Percentage of reported cases investigated within two days of notification
5. Countries are expected to submit data at least once per month to WPRO

	Reached or surpass target
	Nearly reached target 0.5-0.99 for non-polio AFP rate; 60-79% for other indicators
	Substantially below target

Table 3. Laboratory confirmation of polio isolates from environmental samples in 2017–2018 ¹

Country/area	Intratyptic differentiation lab ²	2017													2018															
		Total number of samples processed	Total number of samples with polio isolates	Polio isolates									NPEV	Pending ITD	Discordant pending sequencing	Total number of samples processed	Total number of samples with polio isolates	Polio isolates									NPEV	Pending ITD	Discordant pending sequencing	
				Type 1			Type 2			Type 3								Type 1			Type 2			Type 3						
				Wild	Sabin	VDPV	Wild	Sabin	VDPV	Wild	Sabin	VDPV						Wild	Sabin	VDPV	Wild	Sabin	VDPV	Wild	Sabin	VDPV				
Australia	VIDRL	6	2	0	0	0	0	0	1	0	1	0	4	0	0	17	2	0	2	0	0	0	0	0	0	0	0	12	0	0
China (total)		325	188	0	213	0	0	0	0	0	650	0	1158	0	0	82	67	0	46	0	0	0	0	0	191	1	313	0	0	
China, Fujian	Prov. Lab/CCDC	53	22	0	8	0	0	0	0	0	42	0	331	0	0	29	25	0	6	0	0	0	0	0	66	1	205	0	0	
China, Gansu	Prov. Lab/CCDC	12	10	0	10	0	0	0	0	0	29	0	18	0	0	3	2	0	2	0	0	0	0	0	3	0	6	0	0	
China, Guangdong	Prov. Lab/CCDC	48	39	0	18	0	0	0	0	0	87	0	108	0	0	20	17	0	11	0	0	0	0	0	42	0	58	0	0	
China, Guangxi	Prov. Lab/CCDC	36	20	0	22	0	0	0	0	0	36	0	94	0	0	0	0	-	-	-	-	-	-	-	-	-	-	-	-	
China, Heilongjiang	Prov. Lab/CCDC	42	17	0	12	0	0	0	0	0	34	0	112	0	0	9	7	0	1	0	0	0	0	0	16	0	3	0	0	
China, Shandong	Prov. Lab/CCDC	48	28	0	18	0	0	0	0	0	90	0	272	0	0	11	7	0	13	0	0	0	0	0	31	0	34	0	0	
China, Shanghai	Prov. Lab/CCDC	22	18	0	17	0	0	0	0	0	65	0	51	0	0	4	3	0	2	0	0	0	0	0	6	0	2	0	0	
China, Xinjiang	Prov. Lab/CCDC	36	34	0	108	0	0	0	0	0	267	0	115	0	0	6	6	0	11	0	0	0	0	0	27	0	5	0	0	
China, Yunnan	Prov. Lab/CCDC	28	0	-	-	-	-	-	-	-	-	-	57	0	0	0	0	-	-	-	-	-	-	-	-	-	-	-	-	
Malaysia	IMR	24	0	-	-	-	-	-	-	-	-	-	22	0	0	0	-	-	-	-	-	-	-	-	-	-	-	-	-	
Philippines	RITM	40	8	0	1	0	0	0	0	0	7	0	21	0	0	25	3	0	2	0	0	0	0	0	1	0	11	0	0	
Total		395	198	0	214	0	0	0	1	0	658	0	1205	0	0	124	72	0	50	0	0	0	0	0	0	192	1	336	0	0

1. Based on year of collection of sample, if available. Otherwise, based on year of receipt at reference laboratory.
2. CCDC (Chinese Center for Disease Control and Prevention, China); IMR (Institute of Medical Research, Malaysia); RITM (Research Institute for Tropical Medicine, Philippines); VIDRL (Victorian Infectious Diseases Reference Laboratory, Australia)

Table 4. Vaccine-derived poliovirus¹ identified from laboratory testing², 2000–2018

Country/area	2000–2009 ³	2010	2011	2012	2013	2014	2015	2016	2017	2018	
Australia									aVDPV2 (1 env)		
Cambodia	2006 - 1 Total - 2										
China	2009 - 1 Total - 27	aVDPV2 (3 AFP + 1 contact + 1 non-AFP) aVDPV3 (1 AFP + 1 non-AFP)	aVDPV1 (1 AFP) aVDPV2 (2 AFP + 1 contact) cVDPV2 (2 AFP) iVDPV2 (1 AFP + 1 non-AFP) iVDPV3 (1 AFP)	aVDPV1 (1 AFP) aVDPV2 (2 AFP)	cVDPV2 (2 AFP + 1 contact) iVDPV2 + iVDPV3 (1 AFP)	aVDPV2 (1 non-AFP) iVDPV2 + iVDPV3 (1 AFP)	aVDPV1 (1 non-AFP) aVDPV2 (2 AFP) iVDPV3 (1 AFP)	aVDPV1 (1 AFP) aVDPV2 (1 AFP) iVDPV2 (1 AFP) aVDPV2 (1 env)	aVDPV3 (1 AFP)	aVDPV3 (1 AFP) iVDPV3 (1 AFP) ⁴	?VDPV3 (1 AFP) aVDPV3 (1 env)
China, Hong Kong SAR	2005 - 3										
Japan	2005 - 1 Total - 2										
Lao People's Democratic Republic	2004 - 3						cVDPV1 (8 AFP + 21 contacts)	cVDPV1 (3 AFP + 4 contacts)			
Mongolia	2003 - 1										
Papua New Guinea										cVDPV1 (1 AFP + 2 contacts)	
Philippines	2001 - 3					aVDPV2 (1 AFP)					
Viet Nam				aVDPV2 (2 AFP)							

1. Prefix letter refers to the VDPV category: "cVDPV" = circulating VDPV, "iVDPV" = immunodeficiency-associated VDPV, "aVDPV" = ambiguous VDPV, "?VDPV" = pending. Suffix number refers to the poliovirus serotype (types 1, 2 or 3).
2. Source of specimens could be AFP cases, contacts, non-AFP cases or environmental
3. Refers to year of last VDPV case, and aggregate total of VDPV cases for 2000-2009
4. Continuous excretion for 4 months; potential immunodeficient person.