

HIGHLIGHTS

Two important updates from the WHO report to the Executive Board

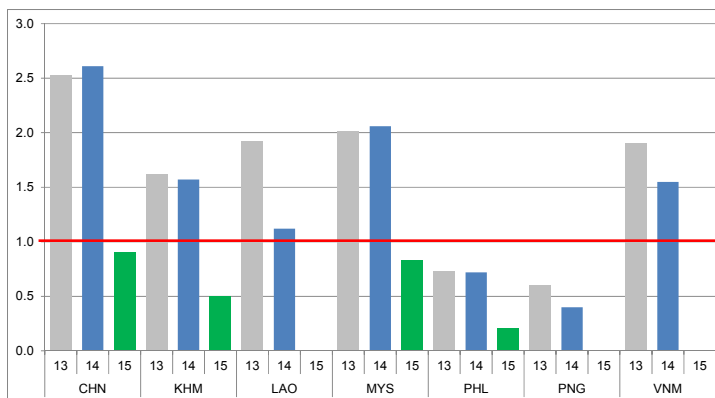
1. Withdrawal of the type 2 component in oral poliovirus vaccine (OPV) from routine immunization systems globally will require replacement of the trivalent formulation of the vaccine with the bivalent (types 1 and 3) formulation in all countries that continue to use OPV. Work is continuing with manufacturers of bivalent oral poliovirus vaccines (bOPV) and their national regulatory agencies to extend the current license for these products to include use in routine activities. It is imperative that all countries wishing to use OPV after April 2016 complete national licensure requirements for the use of bOPV vaccine in their routine immunization programme by the end of 2015. WHO recommends acceptance of the use of bOPV in routine immunization on the basis of its prequalification by WHO while national registration processes are ongoing. A protocol has been drafted to facilitate national planning for the switch from trivalent to bivalent oral poliovirus vaccine in the context of the globally coordinated withdrawal of the type 2 component.

2. The Secretariat will request Member States to submit to their relevant regional commissions for the certification of poliomyelitis eradication, by mid-2015, formal documentation confirming that type 2 wild poliovirus transmission has been interrupted; phase 1 containment activities have been completed or will be completed by the end of 2015; and that appropriate plans are in place to contain any residual type 2 wild polioviruses as outlined in the WHO global action plan to minimize poliovirus facility-associated risk after type-specific eradication of wild polioviruses and sequential cessation of OPV use. The relevant documentation will be reviewed by the Global Commission for the Certification of Poliomyelitis Eradication and a formal decision taken on whether the eradication of type 2 poliovirus can be declared and whether the criteria for withdrawal of the type 2 component in oral poliovirus vaccine have been met.

CONTACT US

Expanded Programme on Immunization
Regional Office for the Western Pacific
World Health Organization
P.O. Box 2932, 1000 Manila, Philippines
Phone: +63 2 5288001
Fax: +63 2 5211036, 5260279
Email: WPR_EPIData@wpro.who.int
Web: www.wpro.who.int/immunization

Chart 1. Non-polio AFP rate (per 100 000 persons < 15 years of age), 2013–2015*



* AFP rate annualized as of week 9

Chart 2. Adequate specimen collection rate, 2013–2015

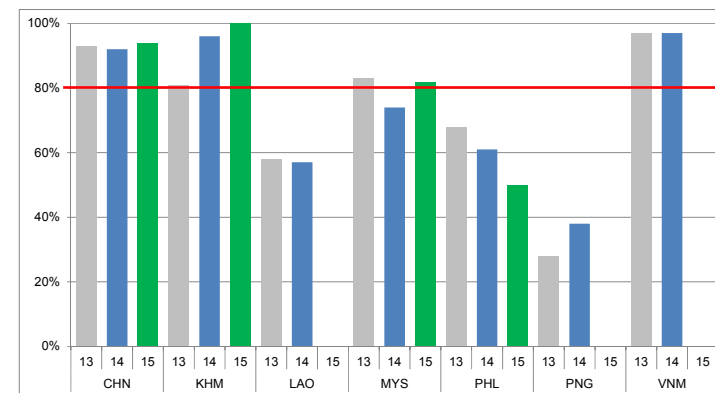


Chart 3. Percentage of reported AFP cases by number of polio vaccination doses, 2015

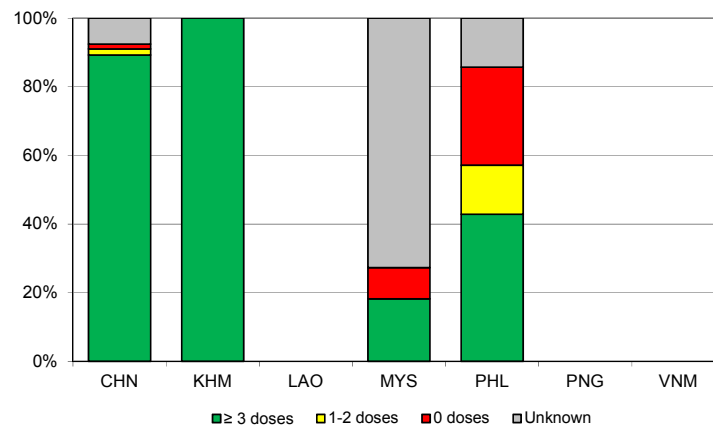
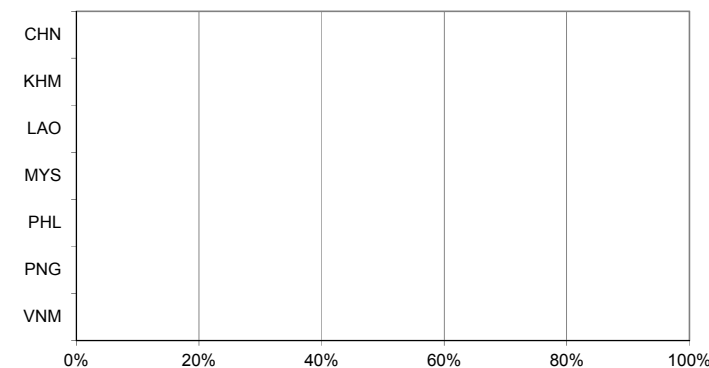


Chart 4. Percentage of reported AFP cases with pending classification > 90 days after onset, 2015



Note: Priority countries were selected for the charts. Official WHO acronyms have been used for abbreviation: CHN (China), KHM (Cambodia), LAO (Lao People's Democratic Republic), MYS (Malaysia), PHL (Philippines), PNG (Papua New Guinea), and VNM (Viet Nam).

Table 1A. Classification of AFP cases with onset in 2014 and key surveillance indicators

	2013		2014												
	Total reported cases	Annual expected cases <15 years of age	Total reported cases	Classification						Indicators				Latest report date ⁵	Days since last report ⁶
				Confirmed wild poliovirus	Vaccine-derived poliovirus (VDPV)	Polio-compatible	Discarded (Non-polio)	Pending		Non-polio AFP rate	% with adequate specimens ²	% investigated ≤ 2 days of notification ³	% with 60-day follow-up ⁴		
								Total	> 90 days ¹ # (%)						≥ 1
Australia	62	44	61	0	0	0	57	4	3 (4.9%)	1.39	44%	84%	0%	20-Feb-15	10
Brunei Darussalam	1	1	4	0	0	0	2	2	0 (0.0%)	4.00	75%	100%	100%	07-Feb-15	23
Cambodia	73	46	72	0	0	0	68	4	1 (1.4%)	1.57	96%	93%	67%	16-Feb-15	14
China	5623	2225	5816	0	0	0	5060	756	359 (6.2%)	2.61	92%	100%	90%	25-Feb-15	5
China, Hong Kong SAR	12	8	19	0	0	0	19	0	0 (0.0%)	2.38	89%	100%	100%	04-Feb-15	-
China, Macao SAR	1	1	1	0	0	0	1	0	0 (0.0%)	1.00	0%	100%	100%	13-Jan-15	-
Japan	0	167	0	-	-	-	-	-	-	-	-	-	-	-	-
Lao People's Democratic Republic	48	25	28	0	0	0	27	1	0 (0.0%)	1.12	57%	93%	83%	04-Feb-15	26
Malaysia	155	77	159	0	0	0	150	9	2 (1.3%)	2.06	74%	87%	98%	04-Feb-15	26
Mongolia	7	8	9	0	0	0	7	2	0 (0.0%)	1.13	89%	100%	100%	06-Feb-15	24
New Zealand	12	9	8	0	0	0	4	4	3 (37.5%)	0.89	38%	100%	60%	04-Feb-15	26
Papua New Guinea	18	30	12	0	0	0	0	12	11 (91.7%)	0.40	17%	75%	0%	17-Feb-15	13
Philippines	277	378	271	0	1	0	233	37	24 (8.9%)	0.72	61%	97%	7%	13-Feb-15	17
Republic of Korea	84	72	88	0	0	0	88	0	0 (0.0%)	1.22	86%	98%	100%	16-Feb-15	-
Singapore	7	6	8	0	0	0	8	0	0 (0.0%)	1.33	75%	88%	100%	07-Jan-15	-
Viet Nam	459	231	358	0	0	0	293	65	24 (6.7%)	1.55	97%	93%	100%	04-Feb-15	26
Pacific island countries and areas	8	10	14	0	0	0	9	5	5 (35.7%)	1.40	64%	93%	80%	27-Jan-15	34
Total	6847	3338	6928	0	1	0	6026	901	432 (6.2%)	2.08	90%	99%	72%		

1. Number (%) of reported cases pending classification more than 90 days from date of onset of paralysis to date of last report
2. Percentage of reported cases with two stool specimens collected 24 hours apart and within 14 days of onset of paralysis
3. Percentage of reported cases investigated within two days of notification
4. Percentage of reported cases with inadequate specimens for which the 60-day follow-up evaluation has been completed
5. Report date is fixed as soon as all cases for the year have been classified
6. Countries are expected to submit data at least once per month to WPRO

Green	Reached or surpassed target
Yellow	Nearly reached target: 0.5–0.99 for non-polio AFP rate; 60–79% for other indicators
Red	Substantially below target

Table 1B. Classification of AFP cases with onset in 2015 and key surveillance indicators

	2014	2015													
	Total reported cases	Annual expected cases <15 years of age	Total reported cases	Classification						Indicators				Latest report date	Days since last report ⁶
				Confirmed wild poliovirus	Vaccine-derived poliovirus (VDPV)	Polio-compatible	Discarded (Non-polio)	Pending		Non-polio AFP rate ²	% with adequate specimens ³	% investigated ≤ 2 days of notification ⁴	% with 60-day follow-up ⁵		
								Total	> 90 days ¹ # (%)						
Australia	61	44	2	0	0	0	0	2	0 (0.0%)	0.26	0%	100%	0%	20-Feb-15	10
Brunei Darussalam	4	1	0	-	-	-	-	-	-	-	-	-	-	05-Feb-15	25
Cambodia	72	46	4	0	0	0	0	4	0 (0.0%)	0.50	100%	100%	-	09-Feb-15	21
China	5816	2225	345	0	0	0	0	345	0 (0.0%)	0.90	94%	100%	0%	25-Feb-15	5
China, Hong Kong SAR	19	8	0	-	-	-	-	-	-	-	-	-	-	04-Feb-15	26
China, Macao SAR	1	1	0	-	-	-	-	-	-	-	-	-	-	13-Feb-15	17
Japan	0	167	0	-	-	-	-	-	-	-	-	-	-	-	-
Lao People's Democratic Republic	28	25	0	-	-	-	-	-	-	-	-	-	-	04-Feb-15	26
Malaysia	159	77	11	0	0	0	0	11	0 (0.0%)	0.83	82%	27%	0%	13-Feb-15	17
Mongolia	9	8	1	0	0	0	0	1	0 (0.0%)	0.72	100%	100%	-	06-Feb-15	24
New Zealand	8	9	0	-	-	-	-	-	-	-	-	-	-	05-Feb-15	25
Papua New Guinea	12	30	0	-	-	-	-	-	-	-	-	-	-	21-Jan-15	40
Philippines	271	378	14	0	0	0	0	14	0 (0.0%)	0.21	50%	100%	0%	09-Feb-15	21
Republic of Korea	88	72	7	0	0	0	2	5	0 (0.0%)	0.56	86%	100%	0%	16-Feb-15	14
Singapore	8	6	1	0	0	0	1	0	0 (0.0%)	0.96	100%	100%	-	09-Feb-15	21
Viet Nam	358	231	0	-	-	-	-	-	-	-	-	-	-	09-Feb-15	21
Pacific island countries and areas	14	10	1	0	0	0	0	1	1 (100.0%)	0.58	0%	0%	0%	27-Jan-15	34
Total	6928	3338	386	0	0	0	3	383	1 (0.3%)	0.67	91%	97%	0%		

1. Number (%) of reported cases pending classification more than 90 days from date of onset of paralysis to date of last report
2. Annualized non-polio AFP rate per 100 000 population under 15 years of age
3. Percentage of reported cases with two stool specimens collected 24 hours apart and within 14 days of onset of paralysis
4. Percentage of reported cases investigated within two days of notification
5. Percentage of reported cases with inadequate specimens for which the 60-day follow-up evaluation has been completed
6. Countries are expected to submit data at least once per month to WPRO

Green	Reached or surpassed target
Yellow	Nearly reached target: 0.5–0.99 for non-polio AFP rate; 60–79% for other indicators
Red	Substantially below target

Table 2A. Laboratory investigation of AFP cases with onset in 2014 and key laboratory indicators

Country	National polio laboratory	Total no. of AFP cases with specimens	Virus isolation results							% specimens positive for NPEV	Latest report date	Intratype differentiation/ Sequencing lab ¹	No. of isolates received	Intratype differentiation (ITD)/sequencing results														
			L20B positive	L20B positive + NPEV	NPEV only	Negative	Pending ≤ 14 days	Pending > 14 days	% reports completed ≤ 14 days ²					Type 1			Type 2			Type 3			NPEV ³	Pending ITD	Discordant pending sequencing	% ITD results reported ≤ 7 days of receipt ≥ 80%		
														Wild	Sabin	VDPV	Wild	Sabin	VDPV	Wild	Sabin	VDPV						
Australia	VIDRL	45	0	0	2	43	0	0	96%	2%	22-Jan-15	VIDRL	0	-	-	-	-	-	-	-	-	-	-	-	-	-	-	
Brunei Darussalam	VIDRL	2	0	0	0	2	0	0	50%	0%	22-Jan-15	VIDRL	0	-	-	-	-	-	-	-	-	-	-	-	-	-	-	
Cambodia	NIID	73	5	0	12	56	0	0	96%	14%	02-Feb-15	NIID	10	0	0	0	0	10	0	0	0	0	0	0	0	0	0	100%
China		5742	109	1	581	5018	0	33	75%	8%	25-Feb-15		307	0	72	0	0	106	4	0	113	2	7	3	0	0	95%	
China, Anhui	Prov. Lab	331	20	0	26	284	0	1	83%	7%		Prov. Lab/CCDC	45	0	10	0	0	14	0	0	21	0	0	0	0	0	91%	
China, Beijing	Prov. Lab	40	1	0	0	38	0	1	82%	0%		Prov. Lab/CCDC	11	0	3	0	0	1	0	0	7	0	0	0	0	0	100%	
China, Fujian	Prov. Lab	212	2	0	25	185	0	0	92%	9%		Prov. Lab/CCDC	3	0	0	0	0	0	0	0	3	0	0	0	0	0	100%	
China, Gansu	Prov. Lab	132	0	0	11	121	0	0	80%	7%		Prov. Lab/CCDC	6	0	2	0	0	2	0	0	2	0	0	0	0	0	100%	
China, Guangdong	Prov. Lab	354	4	0	47	303	0	0	81%	11%		Prov. Lab/CCDC	9	0	4	0	0	3	0	0	2	0	0	0	0	0	78%	
China, Guangxi	Prov. Lab	278	6	0	56	214	0	2	64%	16%		Prov. Lab/CCDC	12	0	0	0	0	7	0	0	5	0	0	0	0	0	100%	
China, Hebei	Prov. Lab	329	10	1	37	281	0	0	69%	8%		Prov. Lab/CCDC	11	0	2	0	0	6	2	0	1	0	0	0	0	0	100%	
China, Heilongjiang	Prov. Lab	150	2	0	7	141	0	0	89%	4%		Prov. Lab/CCDC	6	0	0	0	0	2	0	0	3	0	1	0	0	0	100%	
China, Henan	Prov. Lab	536	4	0	61	471	0	0	80%	9%		Prov. Lab/CCDC	6	0	1	0	0	2	0	0	3	0	0	0	0	0	75%	
China, Hunan	Prov. Lab	268	4	0	36	223	0	5	90%	13%		Prov. Lab/CCDC	4	0	2	0	0	2	0	0	0	0	0	0	0	0	100%	
China, Jiangsu	Prov. Lab	318	18	0	3	296	0	1	79%	1%		Prov. Lab/CCDC	44	0	7	0	0	15	0	0	17	2	0	3	0	0	97%	
China, Jiangxi	Prov. Lab	190	2	0	27	160	0	1	92%	13%		Prov. Lab/CCDC	4	0	1	0	0	0	0	0	1	0	2	0	0	0	100%	
China, Jilin	Prov. Lab	54	1	0	7	46	0	0	66%	11%		Prov. Lab/CCDC	4	0	1	0	0	1	0	0	2	0	0	0	0	0	100%	
China, Shaanxi	Prov. Lab	103	1	0	4	97	0	1	87%	4%		Prov. Lab/CCDC	2	0	0	0	0	2	0	0	0	0	0	0	0	0	100%	
China, Shandong	Prov. Lab	394	5	0	38	349	0	2	83%	7%		Prov. Lab/CCDC	8	0	3	0	0	3	0	0	2	0	0	0	0	0	100%	
China, Shanghai	Prov. Lab	29	2	0	0	27	0	0	98%	0%		Prov. Lab/CCDC	6	0	0	0	0	2	0	0	4	0	0	0	0	0	100%	
China, Shanxi	Prov. Lab	233	4	0	2	224	0	3	55%	1%		Prov. Lab/CCDC	12	0	2	0	0	6	2	0	2	0	0	0	0	0	90%	
China, Sichuan	Prov. Lab	415	4	0	42	362	0	7	42%	9%		Prov. Lab/CCDC	10	0	4	0	0	4	0	0	2	0	0	0	0	0	100%	
China, Tianjin	Prov. Lab	26	0	0	3	23	0	0	92%	10%		Prov. Lab/CCDC	10	0	2	0	0	4	0	0	4	0	0	0	0	0	100%	
China, Xinjiang	Prov. Lab	103	1	0	5	94	0	3	96%	4%		Prov. Lab/CCDC	6	0	4	0	0	2	0	0	0	0	0	0	0	0	100%	
China, Yunnan	Prov. Lab	267	11	0	38	218	0	0	51%	11%		Prov. Lab/CCDC	24	0	7	0	0	7	0	0	10	0	0	0	0	0	93%	
China, Zhejiang	Prov. Lab	188	2	0	20	166	0	0	69%	8%		Prov. Lab/CCDC	8	0	0	0	0	2	0	0	4	0	2	0	0	0	100%	
China, Chongqing	Prov. Lab	74	0	0	14	57	0	3	70%	15%		CCDC	4	0	0	0	0	2	0	0	2	0	0	0	0	0	100%	
China, Guizhou	Prov. Lab	206	0	0	24	182	0	0	90%	11%		CCDC	13	0	0	0	0	7	0	0	6	0	0	0	0	0	82%	
China, Hainan	Prov. Lab	43	0	0	7	36	0	0	76%	14%		CCDC	0	-	-	-	-	-	-	-	-	-	-	-	-	-	-	
China, Hubei	Prov. Lab	186	2	0	23	161	0	0	60%	12%		CCDC	6	0	4	0	0	0	0	0	2	0	0	0	0	0	100%	
China, Liaoning	Prov. Lab	137	1	0	11	123	0	2	85%	7%		CCDC	19	0	9	0	0	4	0	0	4	0	2	0	0	0	100%	
China, Neimongol	Prov. Lab	87	1	0	3	82	0	1	65%	2%		CCDC	8	0	4	0	0	2	0	0	2	0	0	0	0	0	100%	
China, Ningxia	Prov. Lab	36	1	0	0	35	0	0	79%	0%		CCDC	6	0	0	0	0	4	0	0	2	0	0	0	0	0	100%	
China, Qinghai	Prov. Lab	21	0	0	4	17	0	0	93%	17%		CCDC	0	-	-	-	-	-	-	-	-	-	-	-	-	-	-	
China, Tibet	Prov. Lab	2	0	0	0	2	0	0	67%	0%		CCDC	0	-	-	-	-	-	-	-	-	-	-	-	-	-	-	
China, Hong Kong SAR	PHLC	19	0	0	4	15	0	0	93%	11%	13-Jan-15	PHLC	0	-	-	-	-	-	-	-	-	-	-	-	-	-	-	
China, Macao SAR	PHLC	0	-	-	-	-	-	-	-	-	13-Jan-15	PHLC	0	-	-	-	-	-	-	-	-	-	-	-	-	-	-	
Japan	NIID	0	-	-	-	-	-	-	-	-	-	NIID	0	-	-	-	-	-	-	-	-	-	-	-	-	-	-	
Lao People's Democratic Republic	NIID	25	1	0	5	19	0	0	100%	18%	22-Jan-15	NIID	0	-	-	-	-	-	-	-	-	-	-	-	-	-	-	
Malaysia	IMR	164	0	0	4	160	0	0	100%	2%	10-Feb-15	IMR	0	-	-	-	-	-	-	-	-	-	-	-	-	-	-	
Mongolia	PHI	8	0	0	1	5	1	1	100%	15%	08-Jan-15	NIID	0	-	-	-	-	-	-	-	-	-	-	-	-	-	-	
New Zealand	IESR	5	0	0	1	4	0	0	91%	18%	12-Jan-15	IESR	0	-	-	-	-	-	-	-	-	-	-	-	-	-	-	
Papua New Guinea	VIDRL	10	0	1	4	5	0	0	100%	50%	22-Jan-15	VIDRL	4	0	0	0	0	0	0	0	2	0	2	0	0	0	100%	
Philippines	RITM	342	5	0	13	322	2	0	88%	3%	26-Feb-15	RITM	13	0	4	0	0	6	1	0	2	0	0	0	0	0	100%	
Republic of Korea	NIH	88	0	1	8	80	0	0	97%	10%	16-Feb-15	NIH	2	0	0	0	0	0	0	0	0	0	2	0	0	0	100%	
Singapore	SGH	8	0	0	0	8	0	0	100%	0%	14-Jan-15	SGH	0	-	-	-	-	-	-	-	-	-	-	-	-	-	-	
Viet Nam (North)	NIHE	216	0	0	30	186	0	0	100%	12%	11-Feb-15	NIHE	0	-	-	-	-	-	-	-	-	-	-	-	-	-	-	
Viet Nam (South)	PI	136	0	0	16	120	0	0	93%	11%	21-Jan-15	PI	0	-	-	-	-	-	-	-	-	-	-	-	-	-	-	
Pacific island countries and areas	VIDRL	12	0	0	1	11	0	0	100%	4%	22-Jan-15	VIDRL	0	-	-	-	-	-	-	-	-	-	-	-	-	-	-	
Total		6895	120	3	682	6054	3	34	76%	8%			336	0	76	0	0	122	5	0	117	2	11	3	0	0	96%	

1. CCDC (Chinese Center for Disease Control and Prevention, China); IESR (Institute of Environmental Science and Research, New Zealand); IMR (Institute of Medical Research, Malaysia); NIH (National Institute of Health, Republic of Korea); NIHE (National Institute of Hygiene and Epidemiology, Ha Noi, Viet Nam); NIID (National Institute of Infectious Diseases, Japan); PHI (Public Health Institute, Mongolia); PHLC (Public Health Laboratory Center, China, Hong Kong SAR); PI (Pasteur Institute, Ho Chi Minh, Viet Nam); RITM (Research Institute for Tropical Medicine, Philippines); SGH (Singapore General Hospital); VIDRL (Victorian Infectious Diseases Reference Laboratory, Australia)

2. The target of 14 days for the timeliness of virus isolation will be used for all polio laboratories

3. NPEV aroving in L20B cells

Table 2B. Laboratory investigation of AFP cases with onset in 2015 and key laboratory indicators

Country	National polio laboratory	Total no. of AFP cases with specimens	Virus isolation results								% specimens positive for NPEV	Latest report date	Intratype differentiation/ Sequencing lab ¹	No. of isolates received	Intratype differentiation (ITD)/sequencing results																
			L20B positive	L20B positive + NPEV	NPEV only	Negative	Pending ≤ 14 days	Pending > 14 days	% results reported ≤ 14 days ²	Type 1					Type 2			Type 3			NPEV ³	Pending ITD	Discordant pending sequencing	% ITD results reported ≤ 7 days of receipt ≥ 80%							
										Wild					Sabin	VDPV	Wild	Sabin	VDPV	Wild					Sabin	VDPV					
Australia	VIDRL	0	-	-	-	-	-	-	-	-	-	22-Jan-15	VIDRL	0	-	-	-	-	-	-	-	-	-	-	-	-	-	-	-	-	-
Brunei Darussalam	VIDRL	0	-	-	-	-	-	-	-	-	-	22-Jan-15	VIDRL	0	-	-	-	-	-	-	-	-	-	-	-	-	-	-	-	-	-
Cambodia	NIID	4	0	0	0	4	0	0	100%	0%	-	23-Feb-15	NIID	0	-	-	-	-	-	-	-	-	-	-	-	-	-	-	-	-	-
China		334	-	-	-	-	-	-	98%	0%	-	25-Feb-15		10	0	4	0	0	3	0	0	3	0	0	0	0	0	0	0	0	78%
China, Anhui	Prov. Lab	17	0	0	0	10	0	7	100%	0%	-		Prov. Lab/CCDC	0	-	-	-	-	-	-	-	-	-	-	-	-	-	-	-	-	-
China, Beijing	Prov. Lab	6	0	0	0	6	0	0	100%	0%	-		Prov. Lab/CCDC	2	0	0	0	0	2	0	0	0	0	0	0	0	0	0	0	0	0%
China, Fujian	Prov. Lab	15	0	0	0	15	0	0	93%	0%	-		Prov. Lab/CCDC	0	-	-	-	-	-	-	-	-	-	-	-	-	-	-	-	-	-
China, Gansu	Prov. Lab	3	0	0	0	3	0	0	100%	0%	-		Prov. Lab/CCDC	0	-	-	-	-	-	-	-	-	-	-	-	-	-	-	-	-	-
China, Guangdong	Prov. Lab	24	1	0	0	22	0	1	100%	0%	-		Prov. Lab/CCDC	2	0	2	0	0	0	0	0	0	0	0	0	0	0	0	0	0	100%
China, Guangxi	Prov. Lab	11	0	0	0	11	0	0	100%	0%	-		Prov. Lab/CCDC	0	-	-	-	-	-	-	-	-	-	-	-	-	-	-	-	-	-
China, Hebei	Prov. Lab	13	1	0	0	12	0	0	96%	0%	-		Prov. Lab/CCDC	0	-	-	-	-	-	-	-	-	-	-	-	-	-	-	-	-	-
China, Heilongjiang	Prov. Lab	6	0	0	0	6	0	0	100%	0%	-		Prov. Lab/CCDC	0	-	-	-	-	-	-	-	-	-	-	-	-	-	-	-	-	-
China, Henan	Prov. Lab	36	1	0	0	31	0	4	97%	0%	-		Prov. Lab/CCDC	1	0	1	0	0	0	0	0	0	0	0	0	0	0	0	0	0	100%
China, Hunan	Prov. Lab	16	0	0	0	14	0	2	100%	0%	-		Prov. Lab/CCDC	0	-	-	-	-	-	-	-	-	-	-	-	-	-	-	-	-	-
China, Jiangsu	Prov. Lab	18	0	0	0	16	0	2	100%	0%	-		Prov. Lab/CCDC	0	-	-	-	-	-	-	-	-	-	-	-	-	-	-	-	-	-
China, Jiangxi	Prov. Lab	6	1	0	0	5	0	0	100%	0%	-		Prov. Lab/CCDC	1	0	0	0	0	1	0	0	0	0	0	0	0	0	0	0	0	100%
China, Jilin	Prov. Lab	3	0	0	0	3	0	0	100%	0%	-		Prov. Lab/CCDC	0	-	-	-	-	-	-	-	-	-	-	-	-	-	-	-	-	-
China, Shaanxi	Prov. Lab	6	0	0	0	0	0	6	-	-	-		Prov. Lab/CCDC	0	-	-	-	-	-	-	-	-	-	-	-	-	-	-	-	-	-
China, Shandong	Prov. Lab	19	0	0	0	18	0	1	100%	0%	-		Prov. Lab/CCDC	0	-	-	-	-	-	-	-	-	-	-	-	-	-	-	-	-	-
China, Shanghai	Prov. Lab	6	0	0	0	6	0	0	100%	0%	-		Prov. Lab/CCDC	0	-	-	-	-	-	-	-	-	-	-	-	-	-	-	-	-	-
China, Shanxi	Prov. Lab	9	0	0	0	9	0	0	67%	0%	-		Prov. Lab/CCDC	0	-	-	-	-	-	-	-	-	-	-	-	-	-	-	-	-	-
China, Sichuan	Prov. Lab	39	0	0	0	18	0	21	100%	0%	-		Prov. Lab/CCDC	0	-	-	-	-	-	-	-	-	-	-	-	-	-	-	-	-	-
China, Tianjin	Prov. Lab	6	0	0	0	6	0	0	100%	0%	-		Prov. Lab/CCDC	2	0	0	0	0	0	0	0	2	0	0	0	0	0	0	0	0	100%
China, Xinjiang	Prov. Lab	3	0	0	0	0	0	3	-	-	-		Prov. Lab/CCDC	0	-	-	-	-	-	-	-	-	-	-	-	-	-	-	-	-	-
China, Yunnan	Prov. Lab	13	0	0	0	12	0	1	100%	0%	-		Prov. Lab/CCDC	0	-	-	-	-	-	-	-	-	-	-	-	-	-	-	-	-	-
China, Zhejiang	Prov. Lab	23	1	0	0	20	0	2	100%	0%	-		Prov. Lab/CCDC	1	0	1	0	0	0	0	0	0	0	0	0	0	0	0	0	0	100%
China, Chongqing	Prov. Lab	4	0	0	0	3	0	1	100%	0%	-		CCDC	1	0	0	0	0	0	0	0	1	0	0	0	0	0	0	0	0	100%
China, Guizhou	Prov. Lab	10	0	0	0	6	0	4	100%	0%	-		CCDC	0	-	-	-	-	-	-	-	-	-	-	-	-	-	-	-	-	-
China, Hainan	Prov. Lab	5	0	0	0	5	0	0	100%	0%	-		CCDC	0	-	-	-	-	-	-	-	-	-	-	-	-	-	-	-	-	-
China, Hubei	Prov. Lab	7	0	0	0	6	0	1	100%	0%	-		CCDC	0	-	-	-	-	-	-	-	-	-	-	-	-	-	-	-	-	-
China, Liaoning	Prov. Lab	7	0	0	0	7	0	0	100%	0%	-		CCDC	0	-	-	-	-	-	-	-	-	-	-	-	-	-	-	-	-	-
China, Neimongol	Prov. Lab	2	0	0	0	2	0	0	100%	0%	-		CCDC	0	-	-	-	-	-	-	-	-	-	-	-	-	-	-	-	-	-
China, Ningxia	Prov. Lab	1	0	0	0	0	0	1	-	-	-		CCDC	0	-	-	-	-	-	-	-	-	-	-	-	-	-	-	-	-	-
China, Qinghai	Prov. Lab	0	-	-	-	-	-	-	-	-	-		CCDC	0	-	-	-	-	-	-	-	-	-	-	-	-	-	-	-	-	-
China, Tibet	Prov. Lab	0	-	-	-	-	-	-	-	-	-		CCDC	0	-	-	-	-	-	-	-	-	-	-	-	-	-	-	-	-	-
China, Hong Kong SAR	PHLC	1	0	0	0	0	1	0	-	-	-	04-Feb-15	PHLC	0	-	-	-	-	-	-	-	-	-	-	-	-	-	-	-	-	-
China, Macao SAR	PHLC	0	-	-	-	-	-	-	-	-	-	04-Feb-15	PHLC	0	-	-	-	-	-	-	-	-	-	-	-	-	-	-	-	-	-
Japan	NIID	0	-	-	-	-	-	-	-	-	-		NIID	0	-	-	-	-	-	-	-	-	-	-	-	-	-	-	-	-	-
Lao People's Democratic Republic	NIID	0	-	-	-	-	-	-	-	-	-		NIID	0	-	-	-	-	-	-	-	-	-	-	-	-	-	-	-	-	-
Malaysia	IMR	5	0	0	0	5	0	0	100%	0%	-	10-Feb-15	IMR	0	-	-	-	-	-	-	-	-	-	-	-	-	-	-	-	-	-
Mongolia	PHI	1	0	0	0	1	0	0	50%	0%	-	09-Feb-15	NIID	0	-	-	-	-	-	-	-	-	-	-	-	-	-	-	-	-	-
New Zealand	IESR	0	-	-	-	-	-	-	-	-	-	02-Feb-15	IESR	0	-	-	-	-	-	-	-	-	-	-	-	-	-	-	-	-	-
Papua New Guinea	VIDRL	0	-	-	-	-	-	-	-	-	-	22-Jan-15	VIDRL	0	-	-	-	-	-	-	-	-	-	-	-	-	-	-	-	-	-
Philippines	RITM	44	0	0	0	6	29	9	0	89%	14%	26-Feb-15	RITM	0	-	-	-	-	-	-	-	-	-	-	-	-	-	-	-	-	-
Republic of Korea	NIH	7	0	0	0	3	4	0	100%	0%	-	16-Feb-15	NIH	0	-	-	-	-	-	-	-	-	-	-	-	-	-	-	-	-	-
Singapore	SGH	2	0	0	0	2	0	0	100%	0%	-	14-Feb-15	SGH	0	-	-	-	-	-	-	-	-	-	-	-	-	-	-	-	-	-
Viet Nam (North)	NIHE	13	0	0	0	6	6	1	100%	0%	-	11-Feb-15	NIHE	0	-	-	-	-	-	-	-	-	-	-	-	-	-	-	-	-	-
Viet Nam (South)	PI	6	0	0	0	5	1	0	100%	0%	-	09-Feb-15	PI	0	-	-	-	-	-	-	-	-	-	-	-	-	-	-	-	-	-
Pacific island countries and areas	VIDRL	0	-	-	-	-	-	-	-	-	-	22-Jan-15	VIDRL	0	-	-	-	-	-	-	-	-	-	-	-	-	-	-	-	-	-
Total		417	0	0	0	6	55	21	1					10	0	4	0	0	3	0	0	3	0	0	0	0	0	0	0	78%	

1. CCDC (Chinese Center for Disease Control and Prevention, China); IESR (Institute of Environmental Science and Research, New Zealand); IMR (Institute of Medical Research, Malaysia); NIH (National Institute of Health, Republic of Korea); NIHE (National Institute of Hygiene and Epidemiology, Ha Noi, Viet Nam); NIID (National Institute of Infectious Diseases, Japan); PHI (Public Health Institute, Mongolia); PHLC (Public Health Laboratory Center, China, Hong Kong SAR); PI (Pasteur Institute, Ho Chi Minh, Viet Nam); RITM (Research Institute for Tropical Medicine, Philippines); SGH (Singapore General Hospital); VIDRL (Victorian Infectious Diseases Reference Laboratory, Australia)
 2. The target of 14 days for the timeliness of virus isolation will be used for all polio laboratories
 3. NPEV growing in L20B cells

Table 3A. Laboratory confirmation of polio isolates from other sources in 2014 ¹

Country	Intratype differentiation lab ²	Non-AFP cases													Environmental samples														
		Total number of non-AFP cases tested for polio	Total number of non-AFP cases with polio isolates	Type 1			Type 2			Type 3			NPEV grown in L20B	Pending ITD	Discordant pending sequencing	Total number of samples processed	Total number of samples with polio isolates	Type 1			Type 2			Type 3			NPEV grown in L20B	Pending ITD	Discordant pending sequencing
				Wild	Sabin	VDPV	Wild	Sabin	VDPV	Wild	Sabin	VDPV						Wild	Sabin	VDPV	Wild	Sabin	VDPV	Wild	Sabin	VDPV			
Australia	VIDRL	96	0	0	0	0	0	0	0	0	0	0	0	0	0	3	0	-	-	-	-	-	-	-	-	-	3	0	0
Brunei Darussalam	VIDRL	0	-	-	-	-	-	-	-	-	-	-	-	-	-	0	-	-	-	-	-	-	-	-	-	-	-	-	-
Cambodia	NIID	0	-	-	-	-	-	-	-	-	-	-	-	-	-	0	-	-	-	-	-	-	-	-	-	-	-	-	-
China		3	3	0	3	0	0	0	0	0	1	0	0	0	0	167	167	0	79	0	0	129	2	0	115	0	0	0	0
China, Anhui	Prov. Lab/CCDC	0	-	-	-	-	-	-	-	-	-	-	-	-	-	0	-	-	-	-	-	-	-	-	-	-	-	-	-
China, Beijing	Prov. Lab/CCDC	0	-	-	-	-	-	-	-	-	-	-	-	-	-	0	-	-	-	-	-	-	-	-	-	-	-	-	-
China, Fujian	Prov. Lab/CCDC	0	-	-	-	-	-	-	-	-	-	-	-	-	-	14	14	0	1	0	0	4	0	0	0	0	0	0	0
China, Gansu	Prov. Lab/CCDC	0	-	-	-	-	-	-	-	-	-	-	-	-	-	0	-	-	-	-	-	-	-	-	-	-	-	-	-
China, Guangdong	Prov. Lab/CCDC	0	-	-	-	-	-	-	-	-	-	-	-	-	-	48	48	0	21	0	0	22	0	0	15	0	0	0	0
China, Guangxi	Prov. Lab/CCDC	0	-	-	-	-	-	-	-	-	-	-	-	-	-	0	-	-	-	-	-	-	-	-	-	-	-	-	-
China, Hebei	Prov. Lab/CCDC	0	-	-	-	-	-	-	-	-	-	-	-	-	-	0	-	-	-	-	-	-	-	-	-	-	-	-	-
China, Heilongjiang	Prov. Lab/CCDC	0	-	-	-	-	-	-	-	-	-	-	-	-	-	18	18	0	11	0	0	37	1	0	47	0	0	0	0
China, Henan	Prov. Lab/CCDC	0	-	-	-	-	-	-	-	-	-	-	-	-	-	0	-	-	-	-	-	-	-	-	-	-	-	-	-
China, Hunan	Prov. Lab/CCDC	0	-	-	-	-	-	-	-	-	-	-	-	-	-	0	-	-	-	-	-	-	-	-	-	-	-	-	-
China, Jiangsu	Prov. Lab/CCDC	0	-	-	-	-	-	-	-	-	-	-	-	-	-	0	-	-	-	-	-	-	-	-	-	-	-	-	-
China, Jiangxi	Prov. Lab/CCDC	0	-	-	-	-	-	-	-	-	-	-	-	-	-	0	-	-	-	-	-	-	-	-	-	-	-	-	-
China, Jilin	Prov. Lab/CCDC	0	-	-	-	-	-	-	-	-	-	-	-	-	-	0	-	-	-	-	-	-	-	-	-	-	-	-	-
China, Shaanxi	Prov. Lab/CCDC	0	-	-	-	-	-	-	-	-	-	-	-	-	-	0	-	-	-	-	-	-	-	-	-	-	-	-	-
China, Shandong	Prov. Lab/CCDC	0	-	-	-	-	-	-	-	-	-	-	-	-	-	48	48	0	13	0	0	16	0	0	23	0	0	0	0
China, Shanghai	Prov. Lab/CCDC	0	-	-	-	-	-	-	-	-	-	-	-	-	-	12	12	0	6	0	0	12	0	0	10	0	0	0	0
China, Shanxi	Prov. Lab/CCDC	0	-	-	-	-	-	-	-	-	-	-	-	-	-	0	-	-	-	-	-	-	-	-	-	-	-	-	-
China, Sichuan	Prov. Lab/CCDC	0	-	-	-	-	-	-	-	-	-	-	-	-	-	0	-	-	-	-	-	-	-	-	-	-	-	-	-
China, Tianjin	Prov. Lab/CCDC	0	-	-	-	-	-	-	-	-	-	-	-	-	-	0	-	-	-	-	-	-	-	-	-	-	-	-	-
China, Xinjiang	Prov. Lab/CCDC	0	-	-	-	-	-	-	-	-	-	-	-	-	-	27	27	0	27	0	0	38	1	0	20	0	0	0	0
China, Yunnan	Prov. Lab/CCDC	1	1	0	1	0	0	0	0	0	0	0	0	0	0	-	-	-	-	-	-	-	-	-	-	-	-	-	-
China, Zhejiang	Prov. Lab/CCDC	0	-	-	-	-	-	-	-	-	-	-	-	-	-	0	-	-	-	-	-	-	-	-	-	-	-	-	-
China, Chongqing	CCDC	0	-	-	-	-	-	-	-	-	-	-	-	-	-	0	-	-	-	-	-	-	-	-	-	-	-	-	-
China, Guizhou	CCDC	0	-	-	-	-	-	-	-	-	-	-	-	-	-	0	-	-	-	-	-	-	-	-	-	-	-	-	-
China, Hainan	CCDC	0	-	-	-	-	-	-	-	-	-	-	-	-	-	0	-	-	-	-	-	-	-	-	-	-	-	-	-
China, Hubei	CCDC	0	-	-	-	-	-	-	-	-	-	-	-	-	-	0	-	-	-	-	-	-	-	-	-	-	-	-	-
China, Liaoning	CCDC	0	-	-	-	-	-	-	-	-	-	-	-	-	-	0	-	-	-	-	-	-	-	-	-	-	-	-	-
China, Neimongol	CCDC	0	-	-	-	-	-	-	-	-	-	-	-	-	-	0	-	-	-	-	-	-	-	-	-	-	-	-	-
China, Ningxia	CCDC	0	-	-	-	-	-	-	-	-	-	-	-	-	-	0	-	-	-	-	-	-	-	-	-	-	-	-	-
China, Qinghai	CCDC	2	2	0	2	0	0	0	0	0	1	0	0	0	0	-	-	-	-	-	-	-	-	-	-	-	-	-	-
China, Tibet	CCDC	0	-	-	-	-	-	-	-	-	-	-	-	-	-	0	-	-	-	-	-	-	-	-	-	-	-	-	-
China, Hong Kong SAR	PHLC	0	-	-	-	-	-	-	-	-	-	-	-	-	-	0	-	-	-	-	-	-	-	-	-	-	-	-	-
China, Macao SAR	PHLC	0	-	-	-	-	-	-	-	-	-	-	-	-	-	0	-	-	-	-	-	-	-	-	-	-	-	-	-
Japan	NIID	0	-	-	-	-	-	-	-	-	-	-	-	-	-	0	-	-	-	-	-	-	-	-	-	-	-	-	-
Lao People's Democratic Republic	NIID	0	-	-	-	-	-	-	-	-	-	-	-	-	-	0	-	-	-	-	-	-	-	-	-	-	-	-	-
Malaysia	IMR	0	-	-	-	-	-	-	-	-	-	-	-	-	-	21	7	0	1	0	0	1	0	0	5	0	7	0	0
Mongolia	NIID	203	0	0	0	0	0	0	0	0	0	0	23	0	0	0	-	-	-	-	-	-	-	-	-	-	-	-	-
New Zealand	IESR	0	-	-	-	-	-	-	-	-	-	-	-	-	-	0	-	-	-	-	-	-	-	-	-	-	-	-	-
Papua New Guinea	VIDRL	0	-	-	-	-	-	-	-	-	-	-	-	-	-	0	-	-	-	-	-	-	-	-	-	-	-	-	-
Philippines	RITM	1	1	0	0	0	0	1	0	0	0	0	0	0	0	-	-	-	-	-	-	-	-	-	-	-	-	-	-
Republic of Korea	NIH	0	-	-	-	-	-	-	-	-	-	-	-	-	-	0	-	-	-	-	-	-	-	-	-	-	-	-	-
Singapore	SGH	0	-	-	-	-	-	-	-	-	-	-	-	-	-	0	-	-	-	-	-	-	-	-	-	-	-	-	-
Viet Nam (North)	NIHE	0	-	-	-	-	-	-	-	-	-	-	-	-	-	0	-	-	-	-	-	-	-	-	-	-	-	-	-
Viet Nam (South)	PI	0	-	-	-	-	-	-	-	-	-	-	-	-	-	0	-	-	-	-	-	-	-	-	-	-	-	-	-
Pacific island countries and areas	VIDRL	0	-	-	-	-	-	-	-	-	-	-	-	-	-	0	-	-	-	-	-	-	-	-	-	-	-	-	-
Total		303	4	0	3	0	0	1	0	0	1	0	23	0	0	191	174	0	80	0	0	130	2	0	120	0	10	0	0

1. Based on year of collection of sample, if available. Otherwise, based on year of receipt at reference laboratory.

2. CCDC (Chinese Center for Disease Control and Prevention, China); IESR (Institute of Environmental Science and Research, New Zealand); IMR (Institute of Medical Research, Malaysia); NIH (National Institute of Health, Republic of Korea); NIHE (National Institute of Hygiene and Epidemiology, Ha Noi, Viet Nam); NIID (National Institute of Infectious Diseases, Japan); PHI (Public Health Institute, Mongolia); PHLC (Public Health Laboratory Center, China, Hong Kong SAR); PI (Pasteur Institute, Ho Chi Minh, Viet Nam); RITM (Research Institute for Tropical Medicine, Philippines); SGH (Singapore General Hospital); VIDRL (Victorian Infectious Diseases Reference Laboratory, Australia)

Table 4. Vaccine-derived poliovirus, 2000–2015

Country	2000–2009 ²	2010	2011	2012	2013	2014	2015
Cambodia	2006 (1 case) Total (2 cases)						
China	2009 (1 case) Total (27 cases)	aVDPV2 (5 cases) aVDPV3 (2 cases)	aVDPV1 (1 case) aVDPV2 (3 cases) cVDPV2 (2 cases) iVDPV2 (2 cases) iVDPV3 (1 case)	aVDPV1 (1 case) aVDPV2 (2 cases) cVDPV2 (3 cases) iVDPV2 + iVDPV3 (1 case)	aVDPV2 (1 case) iVDPV2 + iVDPV3 (1 case)	aVDPV2 (2 cases) iVDPV3 (1 case) ?VDPV1 (1 case)	
China, Hong Kong SAR	2005 (3 cases)						
Japan	2005 (1 case) Total (2 cases)						
Lao People's Democratic Republic	2004 (3 cases)						
Mongolia	2003 (1 case)						
Philippines	2001 (3 cases)					?VDPV2 (1 case)	
Viet Nam				aVDPV2 (2 cases)			

1. Prefix letter refers to the VDPV category - "cVDPV" = circulating VDPV, "iVDPV" = immunodeficiency-associated VDPV, "aVDPV" = ambiguous VDPV, "?VDPV" = unknown. Suffix number refers to the poliovirus serotype (types 1, 2 or 3).

2. Refers to year of last VDPV case, and aggregate total of VDPV cases for 2000-2009