

## HIGHLIGHTS

### 20th Meeting of the Regional Certification Commission

The 20th Meeting of the Regional Certification Commission (RCC) for Polio Eradication in the Western Pacific was convened from 12 to 14 November 2014 in Kuala Lumpur, Malaysia. The RCC concluded that the Western Pacific has maintained its polio-free status, but noted, however, that 14 years after certification, the Western Pacific Region remains at risk for polio importation and outbreaks while wild poliovirus remains in circulation anywhere in the world, particularly with the current intense poliovirus transmission in Pakistan.

### Temporary Recommendations to Reduce International Spread of Poliovirus

The third meeting of the Emergency Committee regarding the international spread of wild poliovirus was held in November 2014. The Committee noted that the international spread of wild poliovirus has continued since 31 July 2014, with at least three new exportations from Pakistan into neighbouring Afghanistan. There has been no other documented international spread of wild poliovirus since March 2014.

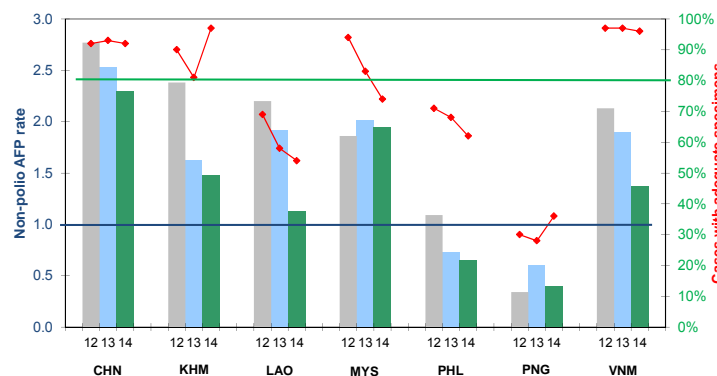
The risk of new international spread from Pakistan was assessed to have increased substantively since 31 July 2014, as cases have escalated during the current high transmission season and there has been no significant improvement in the underlying factors that are driving transmission in the country.

The Committee assessed that the event still constitutes a Public Health Emergency of International Concern and recommended the extension of the Temporary Recommendations for a further three months. You can read more at <http://www.who.int/mediacentre/news/statements/2014/polio-20141114>.

## CONTACT US

Expanded Programme on Immunization  
Regional Office for the Western Pacific  
World Health Organization  
P.O. Box 2932, 1000 Manila, Philippines  
Phone: +63 2 5288001  
Fax: +63 2 5211036, 5260279  
Email: [WPR\\_EPIdata@wpro.who.int](mailto:WPR_EPIdata@wpro.who.int)  
Web: [www.wpro.who.int/immunization](http://www.wpro.who.int/immunization)

Chart 1. Non-polio AFP rate (per 100 000 persons < 15 years of age) and adequate specimen collection rate, 2012–2014\*



\* AFP rate annualized as of week 48

Chart 2. Percentage of cases with pending classification > 90 days after onset, 2014

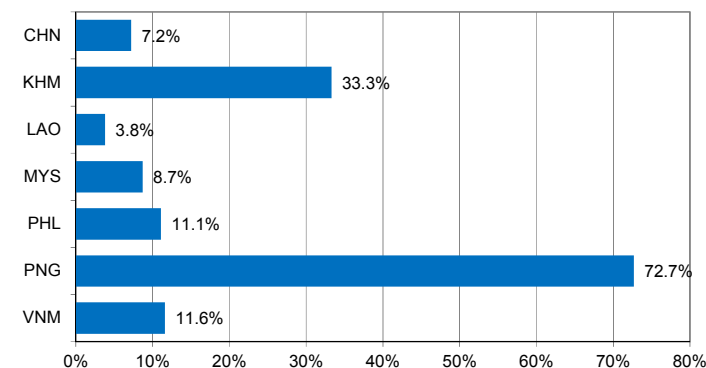


Chart 3. Polio immunization status of reported AFP cases, 2014

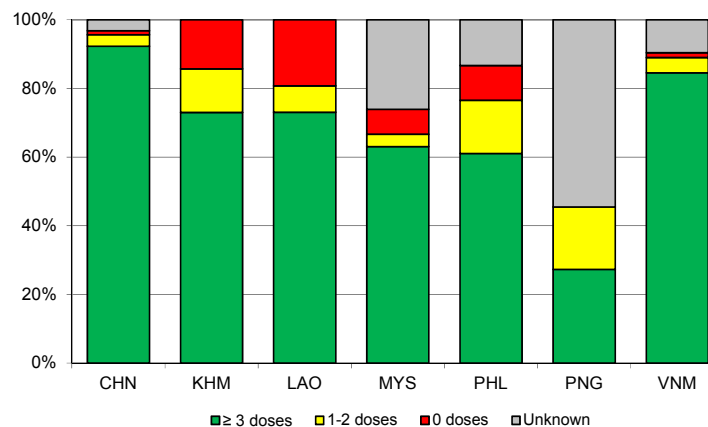
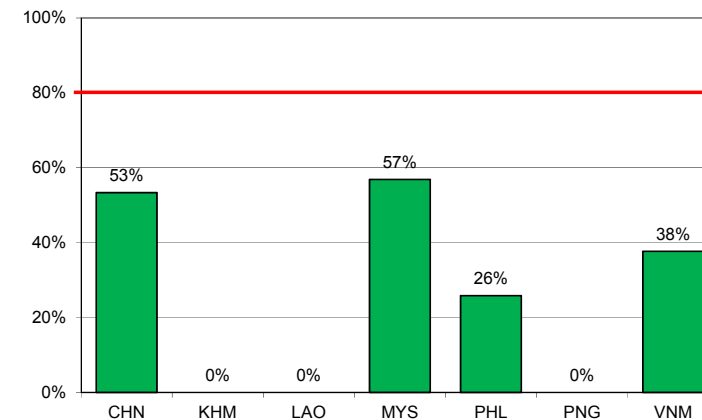


Chart 4. Percentage of samples received at the lab ≤ 3 days of collection, 2014



Note: Priority countries were selected for the charts. Official WHO acronyms have been used for abbreviation: CHN (China), KHM (Cambodia), LAO (Lao People's Democratic Republic), MYS (Malaysia), PHL (Philippines), PNG (Papua New Guinea), and VNM (Viet Nam).

Table 1. Classification of AFP cases with onset in 2014 and key surveillance indicators

	2013		2014													
	Total reported cases	Annual expected cases <15 years of age	Total reported cases	Classification						Indicators					Latest report date	Days since last report <sup>7</sup>
				Confirmed wild poliovirus	Vaccine-derived poliovirus (VDPV)	Polio-compatible	Discarded (Non-polio)	Pending		Non-polio AFP rate <sup>2</sup>	% with adequate specimens <sup>3</sup>	% with any specimen <sup>4</sup>	% investigated ≤ 2 days of notification <sup>5</sup>	% with 60-day follow-up <sup>6</sup>		
								Total	> 90 days <sup>1</sup> # (%)							
≥ 1	≥ 80%		≥ 80%	≥ 80%												
Australia	62	44	47	0	0	0	38	9	2 (4.3%)	1.16	49%	79%	85%	0%	10-Nov-14	21
Brunei Darussalam	1	1	2	0	0	0	2	0	0 (0.0%)	2.17	50%	50%	100%	100%	30-Sep-14	62
Cambodia	73	46	63	0	0	0	18	45	21 (33.3%)	1.48	97%	100%	92%	100%	21-Nov-14	10
China	5623	2225	4701	0	0	0	3415	1286	337 (7.2%)	2.29	92%	99%	100%	82%	26-Nov-14	5
Hong Kong (China)	12	8	15	0	0	0	15	0	0 (0.0%)	2.03	93%	100%	100%	100%	04-Nov-14	27
Japan	0	167	0	-	-	-	-	-	-	-	-	-	-	-	-	-
Lao People's Democratic Republic	48	25	26	0	0	0	23	3	1 (3.8%)	1.13	54%	85%	92%	100%	04-Nov-14	27
Macao (China)	1	1	1	0	0	0	1	0	0 (0.0%)	1.08	0%	100%	100%	100%	14-Nov-14	17
Malaysia	155	77	138	0	0	0	120	18	12 (8.7%)	1.94	74%	98%	64%	64%	03-Nov-14	28
Mongolia	7	8	4	0	0	0	3	1	0 (0.0%)	0.54	75%	100%	100%	0%	07-Nov-14	24
New Zealand	12	9	5	0	0	0	4	1	1 (20.0%)	0.60	40%	80%	100%	67%	29-Oct-14	33
Papua New Guinea	18	30	11	0	0	0	0	11	8 (72.7%)	0.40	36%	91%	73%	0%	22-Oct-14	40
Philippines	277	378	226	0	0	0	165	61	25 (11.1%)	0.65	62%	91%	97%	7%	10-Nov-14	21
Republic of Korea	84	72	76	0	0	0	76	0	0 (0.0%)	1.14	83%	100%	97%	100%	17-Nov-14	14
Singapore	7	6	8	0	0	0	8	0	0 (0.0%)	1.44	75%	100%	88%	100%	06-Nov-14	25
Viet Nam	459	231	292	0	0	0	205	87	34 (11.6%)	1.37	96%	98%	93%	83%	24-Nov-14	7
Pacific island countries	8	10	10	0	0	0	6	4	4 (40.0%)	1.08	60%	80%	90%	25%	28-Oct-14	34
<b>Total</b>	<b>6847</b>	<b>3338</b>	<b>5625</b>	<b>0</b>	<b>0</b>	<b>0</b>	<b>4099</b>	<b>1526</b>	<b>445 (7.9%)</b>	<b>1.83</b>	<b>90%</b>	<b>98%</b>	<b>98%</b>	<b>66%</b>		

- Number (%) of reported cases pending classification more than 90 days from date of onset of paralysis to date of last report
- Annualized non-polio AFP rate per 100 000 population under 15 years of age
- Percentage of reported cases with two stool specimens collected 24 hours apart and within 14 days of onset of paralysis
- Percentage of reported cases with at least one specimen
- Percentage of reported cases investigated within two days of notification
- Percentage of reported cases with inadequate specimens for which the 60-day follow-up evaluation has been completed
- Countries are expected to submit data at least once per month to WPRO

Green	Reached or surpassed target
Yellow	Nearly reached target: 0.5–0.99 for non-polio AFP rate; 60–79% for other indicators
Red	Substantially below target

Table 2. Laboratory investigation of AFP cases with onset in 2014 and key laboratory indicators

Country	National polio laboratory <sup>1</sup>	Total no. of AFP cases with specimens	Virus isolation results							% results reported ≤ 14 days <sup>2</sup>	% specimens positive for NPEV	Latest report date	Intratyptic differentiation / Sequencing lab <sup>1</sup>	No. of isolates referred	Intratyptic differentiation (ITD) results									Discordant pending sequencing	% ITD results reported ≤ 7 days of receipt ≥ 80%	
			L20B positive	L20B positive + NPEV	NPEV only	Negative	Pending ≤ 14 days	Pending > 14 days	Type 1						Type 2			Type 3								
									Wild						Sabin	VDPV	Wild	Sabin	VDPV	Wild	Sabin	VDPV	NPEV <sup>3</sup>			Pending ITD
Australia	VIDRL	40	0	0	2	38	0	0	96%	3%	11-Nov-14	VIDRL	0	-	-	-	-	-	-	-	-	-	-	-	-	-
Brunei Darussalam	VIDRL	1	0	0	0	1	0	0	0%	0%	11-Nov-14	VIDRL	0	-	-	-	-	-	-	-	-	-	-	-	-	-
Papua New Guinea	VIDRL	10	0	1	4	5	0	0	100%	50%	11-Nov-14	VIDRL	4	0	0	0	0	0	0	2	0	2	0	0	0	100%
Pacific island countries	VIDRL	10	0	0	0	9	0	1	100%	0%	11-Nov-14	VIDRL	0	-	-	-	-	-	-	-	-	-	-	-	-	-
Japan	NIID	0	-	-	-	-	-	-	-	-	-	NIID	0	-	-	-	-	-	-	-	-	-	-	-	-	-
Cambodia	NIID	64	4	0	10	50	0	0	95%	13%	26-Nov-14	NIID	8	0	0	0	0	8	0	0	0	0	0	0	0	100%
Lao People's Democratic Republic	NIID	23	0	0	5	18	0	0	100%	20%	20-Oct-14	NIID	0	-	-	-	-	-	-	-	-	-	-	-	-	-
Malaysia	IMR	142	0	0	3	137	2	0	100%	2%	11-Nov-14	IMR	0	-	-	-	-	-	-	-	-	-	-	-	-	-
Mongolia	PHI	4	0	0	1	3	0	0	100%	25%	11-Nov-14	NIID	0	-	-	-	-	-	-	-	-	-	-	-	-	-
New Zealand	IESR	5	0	0	1	4	0	0	91%	18%	19-Nov-14	IESR	0	-	-	-	-	-	-	-	-	-	-	-	-	-
Philippines	RITM	284	4	0	11	261	8	0	89%	3%	20-Nov-14	RITM	9	0	2	0	0	6	0	0	0	0	0	1	0	100%
Republic of Korea	NIH	76	0	1	8	67	0	0	96%	11%	18-Nov-14	NIH	2	0	0	0	0	0	0	0	0	2	0	0	0	100%
Singapore	SGH	8	0	0	0	8	0	0	100%	0%	27-Oct-14	SGH	0	-	-	-	-	-	-	-	-	-	-	-	-	-
Viet Nam, North	NIHE	173	0	0	20	149	4	0	99%	10%	10-Nov-14	NIHE	0	-	-	-	-	-	-	-	-	-	-	-	-	-
Viet Nam, South	PI	114	0	0	12	98	4	0	93%	10%	10-Nov-14	PI	0	-	-	-	-	-	-	-	-	-	-	-	-	-
China (total)		4645	79	1	514	3982	0	69	72%	9%	26-Nov-14		202	0	40	0	0	75	4	0	76	0	7	0	0	96%
China, Anhui	Prov. Lab	255	11	0	23	220	0	1	79%	8%		Prov. Lab	22	0	2	0	0	7	0	0	13	0	0	0	0	100%
China, Beijing	Prov. Lab	36	1	0	0	32	0	3	82%	0%		Prov. Lab	6	0	2	0	0	0	0	0	4	0	0	0	0	100%
China, Fujian	Prov. Lab	167	1	0	23	141	0	2	92%	10%		Prov. Lab	3	0	0	0	0	0	0	0	3	0	0	0	0	100%
China, Gansu	Prov. Lab	106	0	0	8	97	0	1	74%	6%		Prov. Lab	6	0	2	0	0	2	0	0	2	0	0	0	0	100%
China, Guangdong	Prov. Lab	296	3	0	42	251	0	0	79%	11%		Prov. Lab	7	0	2	0	0	3	0	0	2	0	0	0	0	71%
China, Guangxi	Prov. Lab	229	5	0	46	176	0	2	58%	17%		Prov. Lab	11	0	0	0	0	6	0	0	5	0	0	0	0	100%
China, Hebei	Prov. Lab	247	8	1	35	200	0	3	63%	10%		Prov. Lab	9	0	2	0	0	4	2	0	1	0	0	0	0	100%
China, Heilongjiang	Prov. Lab	122	2	0	6	113	0	1	88%	4%		Prov. Lab	6	0	0	0	0	2	0	0	3	0	1	0	0	100%
China, Henan	Prov. Lab	422	3	0	55	362	0	2	81%	11%		Prov. Lab	6	0	1	0	0	2	0	0	3	0	0	0	0	75%
China, Hunan	Prov. Lab	204	3	0	28	167	0	6	86%	13%		Prov. Lab	4	0	2	0	0	2	0	0	0	0	0	0	0	100%
China, Jiangsu	Prov. Lab	271	11	0	3	248	0	9	75%	1%		Prov. Lab	29	0	7	0	0	15	0	0	7	0	0	0	0	95%
China, Jiangxi	Prov. Lab	156	2	0	25	129	0	0	91%	14%		Prov. Lab	4	0	1	0	0	0	0	0	1	0	2	0	0	100%
China, Jilin	Prov. Lab	48	0	0	7	41	0	0	61%	13%		Prov. Lab	0	-	-	-	-	-	-	-	-	-	-	-	-	-
China, Shaanxi	Prov. Lab	85	1	0	4	80	0	0	85%	5%		Prov. Lab	2	0	0	0	0	2	0	0	0	0	0	0	0	100%
China, Shandong	Prov. Lab	320	3	0	32	282	0	3	81%	8%		Prov. Lab	6	0	2	0	0	2	0	0	2	0	0	0	0	100%
China, Shanghai	Prov. Lab	21	2	0	0	18	0	1	98%	0%		Prov. Lab	6	0	0	0	0	2	0	0	4	0	0	0	0	100%
China, Shanxi	Prov. Lab	205	3	0	2	193	0	7	47%	1%		Prov. Lab	10	0	2	0	0	4	2	0	2	0	0	0	0	88%
China, Sichuan	Prov. Lab	330	4	0	30	285	0	11	35%	8%		Prov. Lab	10	0	4	0	0	4	0	0	2	0	0	0	0	100%
China, Tianjin	Prov. Lab	21	0	0	3	17	0	1	90%	13%		Prov. Lab	4	0	0	0	0	2	0	0	2	0	0	0	0	100%
China, Xinjiang	Prov. Lab	74	1	0	5	66	0	2	94%	6%		Prov. Lab	4	0	2	0	0	2	0	0	0	0	0	0	0	100%
China, Yunnan	Prov. Lab	214	11	0	35	166	0	2	50%	13%		Prov. Lab	24	0	7	0	0	7	0	0	10	0	0	0	0	93%
China, Zhejiang	Prov. Lab	150	2	0	20	125	0	3	63%	10%		Prov. Lab	8	0	0	0	0	2	0	0	4	0	2	0	0	100%
China, Chongqing	Prov. Lab	61	0	0	12	49	0	0	73%	15%		CCDC	4	0	0	0	0	2	0	0	2	0	0	0	0	100%
China, Guizhou	Prov. Lab	187	1	0	24	159	0	3	91%	12%		CCDC	5	0	0	0	0	3	0	0	2	0	0	0	0	80%
China, Hainan	Prov. Lab	26	0	0	6	20	0	0	65%	19%		CCDC	0	-	-	-	-	-	-	-	-	-	-	-	-	-
China, Hubei	Prov. Lab	149	0	0	20	129	0	0	56%	13%		CCDC	2	0	2	0	0	0	0	0	0	0	0	0	0	100%
China, Liaoning	Prov. Lab	118	0	0	12	102	0	4	83%	9%		CCDC	4	0	0	0	0	0	0	0	2	0	2	0	0	100%
China, Neimongol	Prov. Lab	74	0	0	3	70	0	1	66%	3%		CCDC	0	-	-	-	-	-	-	-	-	-	-	-	-	-
China, Ningxia	Prov. Lab	33	1	0	2	29	0	1	68%	5%		CCDC	0	-	-	-	-	-	-	-	-	-	-	-	-	-
China, Qinghai	Prov. Lab	17	0	0	3	14	0	0	91%	18%		CCDC	0	-	-	-	-	-	-	-	-	-	-	-	-	-
China, Tibet	Prov. Lab	1	0	0	0	1	0	0	0%	0%		CCDC	0	-	-	-	-	-	-	-	-	-	-	-	-	-
Hong Kong (China)	PHLC	16	0	0	4	11	1	0	91%	13%	19-Nov-14	PHLC	0	-	-	-	-	-	-	-	-	-	-	-	-	-
Macao (China)	PHLC	0	-	-	-	-	-	-	-	-	19-Nov-14	PHLC	0	-	-	-	-	-	-	-	-	-	-	-	-	-
<b>Total</b>		<b>5615</b>	<b>87</b>	<b>3</b>	<b>595</b>	<b>4841</b>	<b>19</b>	<b>70</b>	<b>73%</b>	<b>9%</b>			<b>225</b>	<b>0</b>	<b>42</b>	<b>0</b>	<b>0</b>	<b>89</b>	<b>4</b>	<b>0</b>	<b>78</b>	<b>0</b>	<b>11</b>	<b>1</b>	<b>0</b>	<b>96%</b>

1. IESR (Institute of Environmental Science and Research, New Zealand); IMR (Institute of Medical Research, Malaysia); NIH (National Institute of Health, Republic of Korea); NIHE (National Institute of Hygiene and Epidemiology, Ha Noi, Viet Nam); NIID (National Institute of Infectious Diseases, Japan); PHI (Public Health Institute, Mongolia); PHLC (Public Health Laboratory Center, Hong Kong); PI (Pasteur Institute, Ho Chi Minh, Viet Nam); RITM (Research Institute for Tropical Medicine, Philippines); SGH (Singapore General Hospital); VIDRL (Victorian Infectious Diseases Reference Laboratory, Australia)

2. The target of 14 days for the timeliness of virus isolation will be used for all polio laboratories

3. NPEV growing in L20B cells

4. Twenty-two provincial laboratories in China perform ITD from 2013

Table 3. Laboratory confirmation of polio isolates from other sources in 2014 <sup>1</sup>

Country	Intratyptic differentiation lab <sup>2</sup>	Non-AFP cases													Environmental samples																					
		Total number of non-AFP cases tested for polio	Total number of non-AFP cases with polio isolates	Type 1			Type 2			Type 3			NPEV grown in L20B	Pending ITD	Discordant pending sequencing	Total number of samples processed	Total number of samples with polio isolates	Type 1			Type 2			Type 3			NPEV grown in L20B	Pending ITD	Discordant pending sequencing							
				Wild	Sabin	VDPV	Wild	Sabin	VDPV	Wild	Sabin	VDPV						Wild	Sabin	VDPV	Wild	Sabin	VDPV	Wild	Sabin	VDPV										
Australia	VIDRL	65	0	0	0	0	0	0	0	0	0	0	0	0	0	0	-	-	-	-	-	-	-	-	-	-	-	-	-	-	-	-	-	-	-	
Japan	NIID	0	-	-	-	-	-	-	-	-	-	-	-	-	-	-	0	-	-	-	-	-	-	-	-	-	-	-	-	-	-	-	-	-	-	
Malaysia	IMR	0	-	-	-	-	-	-	-	-	-	-	-	-	-	21	7	0	1	0	0	1	0	0	5	0	7	0	0	0	0	0	0	0		
Mongolia	PHI	140	0	0	0	0	0	0	0	0	0	17	0	0	0	-	-	-	-	-	-	-	-	-	-	-	-	-	-	-	-	-	-	-		
New Zealand	IESR	0	-	-	-	-	-	-	-	-	-	-	-	-	-	0	-	-	-	-	-	-	-	-	-	-	-	-	-	-	-	-	-	-	-	
Philippines	VIDRL	0	-	-	-	-	-	-	-	-	-	-	-	-	-	0	-	-	-	-	-	-	-	-	-	-	-	-	-	-	-	-	-	-	-	
Republic of Korea	NIID	0	-	-	-	-	-	-	-	-	-	-	-	-	-	0	-	-	-	-	-	-	-	-	-	-	-	-	-	-	-	-	-	-	-	
Singapore	SGH	0	-	-	-	-	-	-	-	-	-	-	-	-	-	0	-	-	-	-	-	-	-	-	-	-	-	-	-	-	-	-	-	-	-	
Viet Nam, North	NIID	0	-	-	-	-	-	-	-	-	-	-	-	-	-	0	-	-	-	-	-	-	-	-	-	-	-	-	-	-	-	-	-	-	-	
Viet Nam, South	NIID	1	0	0	0	0	0	0	0	0	0	0	0	0	0	-	-	-	-	-	-	-	-	-	-	-	-	-	-	-	-	-	-	-	-	
China (total)		1	1	0	1	0	0	0	0	0	0	0	0	0	167	167	0	79	0	0	129	2	0	115	0	0	0	0	0	0	0	0	0	0		
China, Anhui	Prov. Lab	0	-	-	-	-	-	-	-	-	-	-	-	-	0	-	-	-	-	-	-	-	-	-	-	-	-	-	-	-	-	-	-	-	-	
China, Beijing	Prov. Lab	0	-	-	-	-	-	-	-	-	-	-	-	-	0	-	-	-	-	-	-	-	-	-	-	-	-	-	-	-	-	-	-	-	-	
China, Fujian	Prov. Lab	0	-	-	-	-	-	-	-	-	-	-	-	-	14	14	0	1	0	0	4	0	0	0	0	0	0	0	0	0	0	0	0	0	0	
China, Gansu	Prov. Lab	0	-	-	-	-	-	-	-	-	-	-	-	-	0	-	-	-	-	-	-	-	-	-	-	-	-	-	-	-	-	-	-	-	-	
China, Guangdong	Prov. Lab	0	-	-	-	-	-	-	-	-	-	-	-	-	48	48	0	21	0	0	22	0	0	15	0	0	0	0	0	0	0	0	0	0	0	
China, Guangxi	Prov. Lab	0	-	-	-	-	-	-	-	-	-	-	-	-	0	-	-	-	-	-	-	-	-	-	-	-	-	-	-	-	-	-	-	-	-	
China, Hebei	Prov. Lab	0	-	-	-	-	-	-	-	-	-	-	-	-	0	-	-	-	-	-	-	-	-	-	-	-	-	-	-	-	-	-	-	-	-	
China, Heilongjiang	Prov. Lab	0	-	-	-	-	-	-	-	-	-	-	-	-	18	18	0	11	0	0	37	1	0	47	0	0	0	0	0	0	0	0	0	0	0	
China, Henan	Prov. Lab	0	-	-	-	-	-	-	-	-	-	-	-	-	0	-	-	-	-	-	-	-	-	-	-	-	-	-	-	-	-	-	-	-	-	
China, Hunan	Prov. Lab	0	-	-	-	-	-	-	-	-	-	-	-	-	0	-	-	-	-	-	-	-	-	-	-	-	-	-	-	-	-	-	-	-	-	
China, Jiangsu	Prov. Lab	0	-	-	-	-	-	-	-	-	-	-	-	-	0	-	-	-	-	-	-	-	-	-	-	-	-	-	-	-	-	-	-	-	-	
China, Jiangxi	Prov. Lab	0	-	-	-	-	-	-	-	-	-	-	-	-	0	-	-	-	-	-	-	-	-	-	-	-	-	-	-	-	-	-	-	-	-	
China, Jilin	Prov. Lab	0	-	-	-	-	-	-	-	-	-	-	-	-	0	-	-	-	-	-	-	-	-	-	-	-	-	-	-	-	-	-	-	-	-	
China, Shaanxi	Prov. Lab	0	-	-	-	-	-	-	-	-	-	-	-	-	0	-	-	-	-	-	-	-	-	-	-	-	-	-	-	-	-	-	-	-	-	
China, Shandong	Prov. Lab	0	-	-	-	-	-	-	-	-	-	-	-	-	48	48	0	13	0	0	16	0	0	23	0	0	0	0	0	0	0	0	0	0	0	
China, Shanghai	Prov. Lab	0	-	-	-	-	-	-	-	-	-	-	-	-	12	12	0	6	0	0	12	0	0	10	0	0	0	0	0	0	0	0	0	0	0	
China, Shanxi	Prov. Lab	0	-	-	-	-	-	-	-	-	-	-	-	-	0	-	-	-	-	-	-	-	-	-	-	-	-	-	-	-	-	-	-	-	-	
China, Sichuan	Prov. Lab	0	-	-	-	-	-	-	-	-	-	-	-	-	0	-	-	-	-	-	-	-	-	-	-	-	-	-	-	-	-	-	-	-	-	
China, Tianjin	Prov. Lab	0	-	-	-	-	-	-	-	-	-	-	-	-	0	-	-	-	-	-	-	-	-	-	-	-	-	-	-	-	-	-	-	-	-	
China, Xinjiang	Prov. Lab	0	-	-	-	-	-	-	-	-	-	-	-	-	27	27	0	27	0	0	38	1	0	20	0	0	0	0	0	0	0	0	0	0	0	
China, Yunnan	Prov. Lab	1	1	0	1	0	0	0	0	0	0	0	0	0	0	-	-	-	-	-	-	-	-	-	-	-	-	-	-	-	-	-	-	-	-	
China, Zhejiang	Prov. Lab	0	-	-	-	-	-	-	-	-	-	-	-	-	0	-	-	-	-	-	-	-	-	-	-	-	-	-	-	-	-	-	-	-	-	-
China, Chongqing	CCDC	0	-	-	-	-	-	-	-	-	-	-	-	-	0	-	-	-	-	-	-	-	-	-	-	-	-	-	-	-	-	-	-	-	-	
China, Guizhou	CCDC	0	-	-	-	-	-	-	-	-	-	-	-	-	0	-	-	-	-	-	-	-	-	-	-	-	-	-	-	-	-	-	-	-	-	
China, Hainan	CCDC	0	-	-	-	-	-	-	-	-	-	-	-	-	0	-	-	-	-	-	-	-	-	-	-	-	-	-	-	-	-	-	-	-	-	
China, Hubei	CCDC	0	-	-	-	-	-	-	-	-	-	-	-	-	0	-	-	-	-	-	-	-	-	-	-	-	-	-	-	-	-	-	-	-	-	
China, Liaoning	CCDC	0	-	-	-	-	-	-	-	-	-	-	-	-	0	-	-	-	-	-	-	-	-	-	-	-	-	-	-	-	-	-	-	-	-	
China, Neimongol	CCDC	0	-	-	-	-	-	-	-	-	-	-	-	-	0	-	-	-	-	-	-	-	-	-	-	-	-	-	-	-	-	-	-	-	-	
China, Ningxia	CCDC	0	-	-	-	-	-	-	-	-	-	-	-	-	0	-	-	-	-	-	-	-	-	-	-	-	-	-	-	-	-	-	-	-	-	
China, Qinghai	CCDC	0	-	-	-	-	-	-	-	-	-	-	-	-	0	-	-	-	-	-	-	-	-	-	-	-	-	-	-	-	-	-	-	-	-	
China, Tibet	CCDC	0	-	-	-	-	-	-	-	-	-	-	-	-	0	-	-	-	-	-	-	-	-	-	-	-	-	-	-	-	-	-	-	-	-	
Hong Kong (China)	PHLC	0	-	-	-	-	-	-	-	-	-	-	-	-	0	-	-	-	-	-	-	-	-	-	-	-	-	-	-	-	-	-	-	-	-	
<b>Total</b>		<b>207</b>	<b>1</b>	<b>0</b>	<b>1</b>	<b>0</b>	<b>0</b>	<b>0</b>	<b>0</b>	<b>0</b>	<b>0</b>	<b>17</b>	<b>0</b>	<b>0</b>	<b>188</b>	<b>174</b>	<b>0</b>	<b>80</b>	<b>0</b>	<b>0</b>	<b>130</b>	<b>2</b>	<b>0</b>	<b>120</b>	<b>0</b>	<b>7</b>	<b>0</b>	<b>0</b>	<b>0</b>	<b>0</b>	<b>0</b>	<b>0</b>	<b>0</b>	<b>0</b>		

1. Based on year of collection of sample, if available. Otherwise, based on year of receipt at reference laboratory.

2. CCDC (Chinese Center for Disease Control and Prevention, China); IESR (Institute of Environmental Science and Research, New Zealand); IMR (Institute of Medical Research, Malaysia); NIID (National Institute of Infectious Diseases, Japan); PHI (Public Health Institute, Mongolia); PHLC (Public Health Laboratory Center, Hong Kong); SGH (Singapore General Hospital); VIDRL (Victorian Infectious Diseases Reference Laboratory, Australia)

Table 4. Vaccine-derived poliovirus, 2000–2014

Country	2000	2001	2002	2003	2004	2005	2006	2007	2008	2009	2010	2011	2012	2013	2014
Cambodia						cVDPV3 (1 case)	cVDPV3 (1 case)								
China	aVDPV1 (1 case)	IVDPV1 (1 case) aVDPV3 (1 case)	aVDPV1 (1 case) aVDPV3 (1 case)		cVDPV1 (2 cases) ?VDPV1 (4 cases) ?VDPV2 (1 case)	IVDPV2 (1 case)	aVDPV1 (1 case) ?VDPV1 (7 cases) VDPV3 (1 case)	aVDPV1 (3 cases) ?VDPV1 (1 case)		aVDPV2 (1 case)	aVDPV2 (5 cases) aVDPV3 (2 cases)	aVDPV1 (1 case) aVDPV2 (3 cases) cVDPV2 (2 cases) IVDPV2 (2 cases) IVDPV3 (1 case)	aVDPV1 (1 case) aVDPV2 (2 cases) cVDPV2 (3 cases) IVDPV2 + IVDPV3 (1 case)	aVDPV2 (1 case) IVDPV2 + IVDPV3 (1 case)	aVDPV2 (1 case)
Hong Kong (China)						?VDPV? (3 cases)									
Japan					?VDPV? (1 case)	?VDPV3 (1 case)									
Lao People's Democratic Republic					aVDPV2 (1 case) ?VDPV? (2 cases)										
Mongolia				?VDPV? (1 case)											
Philippines		cVDPV1 (3 cases)													
Viet Nam													aVDPV2 (2 cases)		