

HIGHLIGHTS

Urgent action required to increase case detection for acute flaccid paralysis

The detection and reporting of cases of non-polio acute flaccid paralysis (NP-AFP) is lower in many countries in 2014 compared to the rate for the same period in 2013 (see Chart 1). Urgent action is needed to increase the sensitivity of surveillance especially in countries and areas where the annualized NP-AFP rate is now below the threshold of 1.0 per 100 000 persons < 15 year of age.

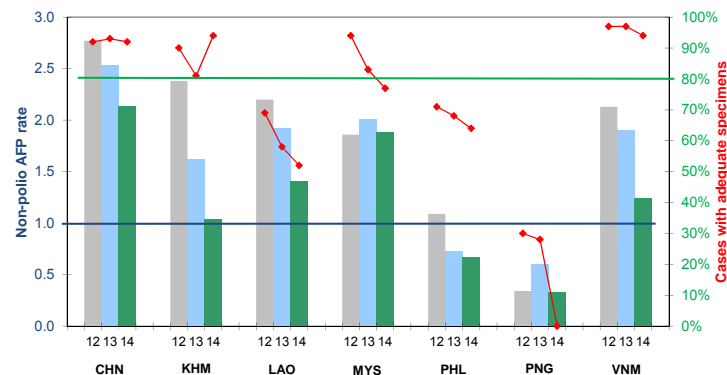
Reports of the National Certification Committees on Polio Eradication due 1 October 2014

The annual reports of the National Certification Committees on Polio Eradication are due for submission to the WHO Regional Office for the Western Pacific by 1 October 2014. The 20th Meeting of the Regional Commission for the Certification of Poliomyelitis Eradication in the Western Pacific will take place from 12-14 November 2014 in Kuala Lumpur, Malaysia.

CONTACT US

Expanded Programme on Immunization
Regional Office for the Western Pacific
World Health Organization
P.O. Box 2932, 1000 Manila, Philippines
Phone: +63 2 5288001
Fax: +63 2 5211036, 5260279
Email: WPR_EPIdata@wpro.who.int
Web: www.wpro.who.int/immunization

Chart 1. Non-polio AFP rate (per 100 000 persons < 15 years of age) and adequate specimen collection rate, 2012–2014*



* AFP rate annualized as of week 37

Chart 2. Percentage of cases with pending classification > 90 days after onset, 2014

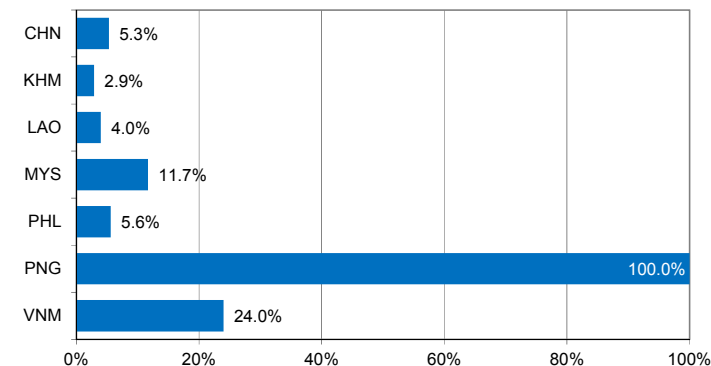


Chart 3. Polio immunization status of reported AFP cases, 2014

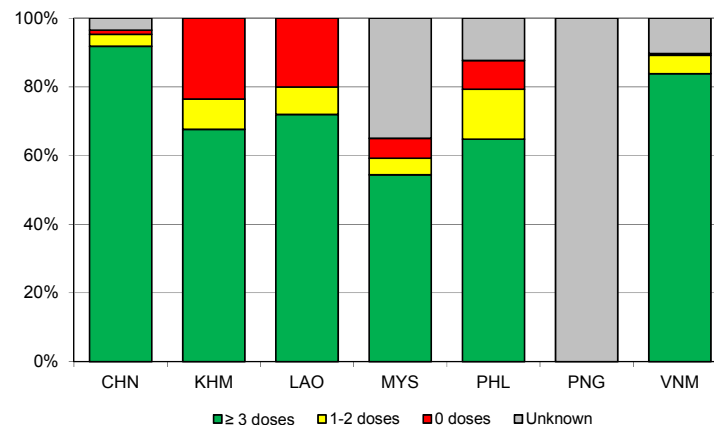
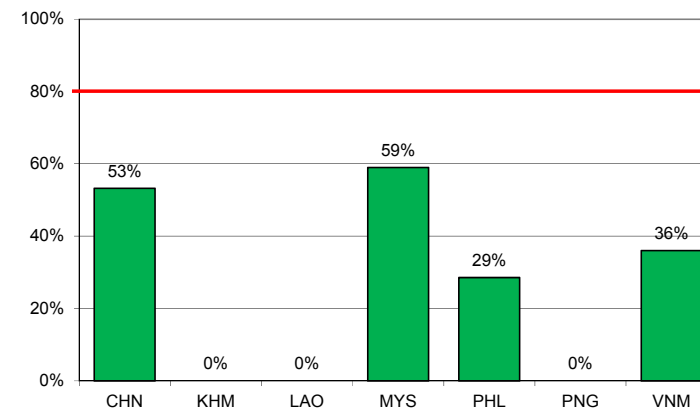


Chart 4. Percentage of samples received at the lab ≤ 3 days of collection, 2014



Note: Priority countries were selected for the charts. Official WHO acronyms have been used for abbreviation: CHN (China), KHM (Cambodia), LAO (Lao People's Democratic Republic), MYS (Malaysia), PHL (Philippines), PNG (Papua New Guinea), and VNM (Viet Nam).

Table 1. Classification of AFP cases with onset in 2014 and key surveillance indicators

	2013		2014													
	Total reported cases	Annual expected cases <15 years of age	Total reported cases	Classification						Indicators					Latest report date	Days since last report ⁷
				Confirmed wild poliovirus	Vaccine-derived poliovirus (VDPV)	Polio-compatible	Discarded (Non-polio)	Pending		Non-polio AFP rate ²	% with adequate specimens ³	% with any specimen ⁴	% investigated ≤ 2 days of notification ⁵	% with 60-day follow-up ⁶		
								Total	> 90 days ¹ # (%)							
≥ 1	≥ 80%		≥ 80%	≥ 80%												
Australia	62	44	35	0	0	0	22	13	5 (14.3%)	1.12	31%	69%	86%	0%	04-Sep-14	12
Brunei Darussalam	1	1	1	0	0	0	1	0	0 (0.0%)	1.41	100%	100%	100%	-	22-Jul-14	56
Cambodia	73	46	34	0	0	0	14	20	1 (2.9%)	1.04	94%	100%	85%	100%	25-Aug-14	22
China	5623	2225	3378	0	0	1	2568	809	179 (5.3%)	2.13	92%	99%	100%	80%	10-Sep-14	6
Hong Kong (China)	12	8	15	0	0	0	14	1	0 (0.0%)	2.64	93%	100%	100%	100%	03-Sep-14	13
Japan	0	167	0	-	-	-	-	-	-	-	-	-	-	-	-	-
Lao People's Democratic Republic	48	25	25	0	0	0	22	3	1 (4.0%)	1.41	52%	84%	92%	83%	16-Sep-14	0
Macao (China)	1	1	1	0	0	0	1	0	0 (0.0%)	1.41	0%	100%	100%	100%	15-Aug-14	32
Malaysia	155	77	103	0	0	0	86	17	12 (11.7%)	1.88	77%	98%	56%	42%	29-Aug-14	18
Mongolia	7	8	3	0	0	0	3	0	0 (0.0%)	0.53	100%	100%	100%	-	09-Sep-14	7
New Zealand	12	9	4	0	0	0	0	4	3 (75.0%)	0.62	50%	75%	100%	50%	08-Aug-14	39
Papua New Guinea	18	30	7	0	0	0	0	7	7 (100.0%)	0.33	0%	100%	57%	0%	28-Aug-14	19
Philippines	277	378	179	0	0	0	142	37	10 (5.6%)	0.67	64%	91%	97%	8%	12-Sep-14	4
Republic of Korea	84	76	62	0	0	0	53	9	0 (0.0%)	1.15	79%	100%	97%	77%	26-Aug-14	21
Singapore	7	6	5	0	0	0	5	0	0 (0.0%)	1.17	80%	100%	100%	100%	09-Sep-14	7
Viet Nam	459	231	204	0	0	0	108	96	49 (24.0%)	1.24	94%	98%	91%	33%	10-Sep-14	6
Pacific island countries	8	10	8	0	0	0	6	2	1 (12.5%)	1.12	75%	100%	100%	50%	08-Sep-14	8
Total	6847	3342	4064	0	0	1	3045	1018	268 (6.6%)	1.71	89%	98%	98%	60%		

- Number (%) of reported cases pending classification more than 90 days from date of onset of paralysis to date of last report
- Annualized non-polio AFP rate per 100 000 population under 15 years of age
- Percentage of reported cases with two stool specimens collected 24 hours apart and within 14 days of onset of paralysis
- Percentage of reported cases with at least one specimen
- Percentage of reported cases investigated within two days of notification
- Percentage of reported cases with inadequate specimens followed-up within 60 days of onset of paralysis
- Countries are expected to submit data at least once per month to WPRO

Green	Reached or surpassed target
Yellow	Nearly reached target: 0.5–0.99 for non-polio AFP rate; 60–79% for other indicators
Red	Substantially below target

Table 2. Laboratory investigation of AFP cases with onset in 2014 and key laboratory indicators

Country	National polio laboratory	Total no. of AFP cases with specimens	Virus isolation results							% specimens positive for NPEV	Latest report date	Intratyphic differentiation / Sequencing lab ¹	No. of isolates referred	Intratyphic differentiation (ITD) results																	
			L20B positive	L20B positive + NPEV	NPEV only	Negative	Pending ≤ 14 days	Pending > 14 days	% results reported ≤ 14 days ²					Type 1			Type 2			Type 3			NPEV ³	Pending ITD	Discordant pending sequencing	% ITD results reported ≤ 7 days of receipt ≥ 80%					
														Wild	Sabin	VDPV	Wild	Sabin	VDPV	Wild	Sabin	VDPV									
Australia	VIDRL	23	0	0	2	18	3	0	95%	5%	01-Aug-14	VIDRL	0	-	-	-	-	-	-	-	-	-	-	-	-	-	-	-	-	-	
Brunei Darussalam	VIDRL	1	0	0	0	1	0	0	0%	0%	01-Aug-14	VIDRL	0	-	-	-	-	-	-	-	-	-	-	-	-	-	-	-	-	-	
Papua New Guinea	VIDRL	7	0	1	3	3	0	0	100%	58%	01-Aug-14	VIDRL	0	-	-	-	-	-	-	-	-	-	-	-	-	-	-	-	-	-	-
Pacific island countries	VIDRL	7	0	0	3	6	1	0	100%	0%	01-Aug-14	VIDRL	0	-	-	-	-	-	-	-	-	-	-	-	-	-	-	-	-	-	-
Japan	NIID	0	-	-	-	-	-	-	-	-	-	NIID	0	-	-	-	-	-	-	-	-	-	-	-	-	-	-	-	-	-	
Cambodia	NIID	42	4	0	8	30	0	0	95%	15%	16-Sep-14	NIID	8	0	0	0	0	8	0	0	0	0	0	0	0	0	0	0	0	100%	
Lao People's Democratic Republic	NIID	21	0	0	5	16	0	0	100%	21%	16-Sep-14	NIID	0	-	-	-	-	-	-	-	-	-	-	-	-	-	-	-	-	-	-
Malaysia	IMR	114	0	0	3	104	7	0	100%	2%	12-Aug-14	IMR	0	-	-	-	-	-	-	-	-	-	-	-	-	-	-	-	-	-	-
Mongolia	PHI	3	0	0	0	3	0	0	100%	0%	09-Sep-14	NIID	0	-	-	-	-	-	-	-	-	-	-	-	-	-	-	-	-	-	-
New Zealand	IERS	4	0	0	1	3	0	0	100%	22%	03-Sep-14	IERS	0	-	-	-	-	-	-	-	-	-	-	-	-	-	-	-	-	-	-
Philippines	RITM	208	1	0	9	193	0	7	90%	3%	20-Aug-14	RITM	2	0	0	0	0	2	0	0	0	0	0	0	0	0	0	0	100%		
Republic of Korea	NIH	62	0	1	5	54	2	0	95%	9%	26-Aug-14	NIH	2	0	0	0	0	0	0	0	0	0	0	0	0	0	0	0	100%		
Singapore	SGH	5	0	0	0	5	0	0	100%	0%	15-Sep-14	SGH	0	-	-	-	-	-	-	-	-	-	-	-	-	-	-	-	-	-	-
Viet Nam, North	NIHE	112	0	0	13	88	5	6	100%	12%	11-Aug-14	NIHE	0	-	-	-	-	-	-	-	-	-	-	-	-	-	-	-	-	-	-
Viet Nam, South	PI	92	0	0	9	83	0	0	91%	9%	08-Sep-14	PI	0	-	-	-	-	-	-	-	-	-	-	-	-	-	-	-	-	-	-
China (total)	CCDC	3336	57	1	354	2863	1	60	67%	9%	10-Sep-14		162	0	40	0	0	57	2	0	60	0	3	0	0	0	0	0	95%		
China, Anhui	Prov. Lab	157	4	0	11	141	0	1	69%	6%		Prov. Lab	12	0	2	0	0	5	0	0	5	0	0	0	0	0	0	0	100%		
China, Beijing	Prov. Lab	21	0	0	0	21	0	0	76%	0%		Prov. Lab	5	0	2	0	0	0	0	0	3	0	0	0	0	0	0	0	100%		
China, Fujian	Prov. Lab	133	0	0	20	112	0	1	91%	10%		Prov. Lab	0	-	-	-	-	-	-	-	-	-	-	-	-	-	-	-	-	-	
China, Gansu	Prov. Lab	81	1	0	7	73	0	0	65%	7%		Prov. Lab	6	0	2	0	0	2	0	0	2	0	0	0	0	0	0	0	100%		
China, Guangdong	Prov. Lab	228	2	0	29	197	0	0	77%	10%		Prov. Lab	6	0	2	0	0	2	0	0	2	0	0	0	0	0	0	0	67%		
China, Guangxi	Prov. Lab	163	3	0	32	127	0	1	42%	16%		Prov. Lab	7	0	0	0	0	2	0	0	5	0	0	0	0	0	0	0	100%		
China, Hebei	Prov. Lab	167	4	1	19	141	0	2	59%	9%		Prov. Lab	5	0	2	0	0	2	0	0	1	0	0	0	0	0	0	0	100%		
China, Heilongjiang	Prov. Lab	90	0	0	4	85	0	1	84%	4%		Prov. Lab	1	0	0	0	0	0	0	0	0	0	0	1	0	0	0	100%			
China, Henan	Prov. Lab	294	2	0	33	255	1	3	74%	9%		Prov. Lab	5	0	1	0	0	1	0	0	3	0	0	0	0	0	0	0	100%		
China, Hunan	Prov. Lab	139	2	0	18	113	0	6	80%	12%		Prov. Lab	2	0	2	0	0	0	0	0	0	0	0	0	0	0	0	0	100%		
China, Jiangsu	Prov. Lab	180	11	0	2	163	0	4	63%	1%		Prov. Lab	29	0	7	0	0	15	0	0	7	0	0	0	0	0	0	0	95%		
China, Jiangxi	Prov. Lab	116	1	0	16	96	0	3	91%	13%		Prov. Lab	1	0	1	0	0	0	0	0	0	0	0	0	0	0	0	0	100%		
China, Jilin	Prov. Lab	38	0	0	6	32	0	0	57%	13%		Prov. Lab	0	-	-	-	-	-	-	-	-	-	-	-	-	-	-	-	-	-	
China, Shaanxi	Prov. Lab	61	0	0	4	46	0	11	77%	8%		Prov. Lab	2	0	0	0	0	2	0	0	0	0	0	0	0	0	0	0	100%		
China, Shandong	Prov. Lab	230	2	0	21	205	0	2	74%	7%		Prov. Lab	4	0	2	0	0	0	0	0	2	0	0	0	0	0	0	0	100%		
China, Shanghai	Prov. Lab	19	2	0	0	16	0	1	97%	0%		Prov. Lab	6	0	0	0	0	2	0	0	4	0	0	0	0	0	0	0	100%		
China, Shanxi	Prov. Lab	151	3	0	1	146	0	1	42%	1%		Prov. Lab	10	0	2	0	0	4	2	0	2	0	0	0	0	0	0	0	88%		
China, Sichuan	Prov. Lab	227	4	0	24	198	0	1	33%	9%		Prov. Lab	10	0	4	0	0	4	0	0	2	0	0	0	0	0	0	0	100%		
China, Tianjin	Prov. Lab	13	0	0	2	11	0	0	92%	12%		Prov. Lab	2	0	0	0	0	0	0	0	2	0	0	0	0	0	0	0	100%		
China, Xinjiang	Prov. Lab	51	1	0	3	45	0	2	94%	5%		Prov. Lab	4	0	2	0	0	2	0	0	0	0	0	0	0	0	0	0	100%		
China, Yunnan	Prov. Lab	168	11	0	28	127	0	2	48%	13%		Prov. Lab	24	0	7	0	0	7	0	0	10	0	0	0	0	0	0	0	93%		
China, Zhejiang	Prov. Lab	111	2	0	16	93	0	0	58%	11%		Prov. Lab	8	0	0	0	0	2	0	0	4	0	2	0	0	0	0	0	100%		
China, Chongqing	Prov. Lab	50	0	0	10	36	0	4	70%	16%		CCDC	4	0	0	0	0	2	0	0	2	0	0	0	0	0	0	0	100%		
China, Guizhou	Prov. Lab	128	1	0	16	107	0	4	90%	12%		CCDC	5	0	0	0	0	3	0	0	2	0	0	0	0	0	0	0	80%		
China, Hainan	Prov. Lab	21	0	0	5	16	0	0	57%	19%		CCDC	0	-	-	-	-	-	-	-	-	-	-	-	-	-	-	-	-		
China, Hubei	Prov. Lab	112	0	0	15	97	0	0	58%	13%		CCDC	2	0	2	0	0	0	0	0	0	0	0	0	0	0	0	0	100%		
China, Liaoning	Prov. Lab	88	0	0	7	75	0	6	82%	7%		CCDC	2	0	0	0	0	0	0	0	2	0	0	0	0	0	0	0	100%		
China, Neimongol	Prov. Lab	63	0	0	2	57	0	4	63%	2%		CCDC	0	-	-	-	-	-	-	-	-	-	-	-	-	-	-	-	-		
China, Ningxia	Prov. Lab	21	1	0	1	19	0	0	60%	5%		CCDC	0	-	-	-	-	-	-	-	-	-	-	-	-	-	-	-	-		
China, Qinghai	Prov. Lab	14	0	0	2	12	0	0	89%	14%		CCDC	0	-	-	-	-	-	-	-	-	-	-	-	-	-	-	-	-		
China, Tibet	Prov. Lab	1	0	0	0	1	0	0	0%	0%		CCDC	0	-	-	-	-	-	-	-	-	-	-	-	-	-	-	-	-		
Hong Kong (China)	PHLC	9	0	0	1	8	0	0	85%	4%	22-Aug-14	PHLC	0	-	-	-	-	-	-	-	-	-	-	-	-	-	-	-	-		
Macao (China)	PHLC	0	-	-	-	-	-	-	-	-	22-Aug-14	PHLC	0	-	-	-	-	-	-	-	-	-	-	-	-	-	-	-	-		
Total		4046	62	3	413	3478	19	73	69%	9%			174	0	40	0	0	67	2	0	60	0	5	0	0	0	96%				

1. IERS (Institute of Environmental Science and Research, New Zealand); IMR (Institute of Medical Research, Malaysia); NIH (National Institute of Health, Republic of Korea); NIHE (National Institute of Hygiene and Epidemiology, Ha Noi, Viet Nam); NIID (National Institute of Infectious Diseases, Japan); PHI (Public Health Institute, Mongolia); PHLC (Public Health Laboratory Center, Hong Kong); PI (Pasteur Institute, Ho Chi Minh, Viet Nam); RITM (Research Institute for Tropical Medicine, Philippines); SGH (Singapore General Hospital); VIDRL (Victorian Infectious Diseases Reference Laboratory, Australia)

2. The target of 14 days for the timeliness of virus isolation will be used for all polio laboratories

3. NPEV growing in L20B cells

4. Twenty-two provincial laboratories in China perform ITD from 2013

Table 3. Laboratory confirmation of polio isolates from other sources in 2014 ¹

Country	Intratyph differentiation lab ²	Non-AFP cases													Environmental samples															
		Total number of non-AFP cases tested for polio	Total number of non-AFP cases with polio isolates	Type 1			Type 2			Type 3			NPEV grown in L20B	Pending ITD	Discordant pending sequencing	Total number of samples processed	Total number of samples with polio isolates	Type 1			Type 2			Type 3			NPEV grown in L20B	Pending ITD	Discordant pending sequencing	
				Wild	Sabin	VDPV	Wild	Sabin	VDPV	Wild	Sabin	VDPV						Wild	Sabin	VDPV	Wild	Sabin	VDPV	Wild	Sabin	VDPV				
Australia	VIDRL	10	0	0	0	0	0	0	0	0	0	0	0	0	0	0	-	-	-	-	-	-	-	-	-	-	-	-	-	-
Japan	NIID	0	-	-	-	-	-	-	-	-	-	-	-	-	-	0	-	-	-	-	-	-	-	-	-	-	-	-	-	-
Malaysia	IMR	0	-	-	-	-	-	-	-	-	-	-	-	-	9	6	0	1	0	0	0	0	0	4	0	4	0	0	0	0
Mongolia	PHI	132	0	0	0	0	0	0	0	0	0	0	13	0	0	-	-	-	-	-	-	-	-	-	-	-	-	-	-	
New Zealand	IESR	0	-	-	-	-	-	-	-	-	-	-	-	-	0	-	-	-	-	-	-	-	-	-	-	-	-	-	-	-
Philippines	VIDRL	0	-	-	-	-	-	-	-	-	-	-	-	-	0	-	-	-	-	-	-	-	-	-	-	-	-	-	-	-
Republic of Korea	NIID	0	-	-	-	-	-	-	-	-	-	-	-	-	0	-	-	-	-	-	-	-	-	-	-	-	-	-	-	-
Singapore	SGH	0	-	-	-	-	-	-	-	-	-	-	-	-	0	-	-	-	-	-	-	-	-	-	-	-	-	-	-	-
Viet Nam, North	NIID	0	-	-	-	-	-	-	-	-	-	-	-	-	0	-	-	-	-	-	-	-	-	-	-	-	-	-	-	-
Viet Nam, South	NIID	1	0	0	0	0	0	0	0	0	0	0	0	0	0	-	-	-	-	-	-	-	-	-	-	-	-	-	-	-
China (total)		1	1	0	1	0	0	0	0	0	0	0	0	0	78	78	0	43	0	0	69	2	0	50	0	0	0	0	0	0
China, Anhui	Prov. Lab	0	-	-	-	-	-	-	-	-	-	-	-	-	0	-	-	-	-	-	-	-	-	-	-	-	-	-	-	-
China, Beijing	Prov. Lab	0	-	-	-	-	-	-	-	-	-	-	-	-	0	-	-	-	-	-	-	-	-	-	-	-	-	-	-	-
China, Fujian	Prov. Lab	0	-	-	-	-	-	-	-	-	-	-	-	-	0	-	-	-	-	-	-	-	-	-	-	-	-	-	-	-
China, Gansu	Prov. Lab	0	-	-	-	-	-	-	-	-	-	-	-	-	0	-	-	-	-	-	-	-	-	-	-	-	-	-	-	-
China, Guangdong	Prov. Lab	0	-	-	-	-	-	-	-	-	-	-	-	-	24	24	0	12	0	0	15	0	0	6	0	0	0	0	0	0
China, Guangxi	Prov. Lab	0	-	-	-	-	-	-	-	-	-	-	-	-	0	-	-	-	-	-	-	-	-	-	-	-	-	-	-	-
China, Hebei	Prov. Lab	0	-	-	-	-	-	-	-	-	-	-	-	-	0	-	-	-	-	-	-	-	-	-	-	-	-	-	-	-
China, Heilongjiang	Prov. Lab	0	-	-	-	-	-	-	-	-	-	-	-	-	10	10	0	7	0	0	19	1	0	13	0	0	0	0	0	0
China, Henan	Prov. Lab	0	-	-	-	-	-	-	-	-	-	-	-	-	0	-	-	-	-	-	-	-	-	-	-	-	-	-	-	-
China, Hunan	Prov. Lab	0	-	-	-	-	-	-	-	-	-	-	-	-	0	-	-	-	-	-	-	-	-	-	-	-	-	-	-	-
China, Jiangsu	Prov. Lab	0	-	-	-	-	-	-	-	-	-	-	-	-	0	-	-	-	-	-	-	-	-	-	-	-	-	-	-	-
China, Jiangxi	Prov. Lab	0	-	-	-	-	-	-	-	-	-	-	-	-	0	-	-	-	-	-	-	-	-	-	-	-	-	-	-	-
China, Jilin	Prov. Lab	0	-	-	-	-	-	-	-	-	-	-	-	-	0	-	-	-	-	-	-	-	-	-	-	-	-	-	-	-
China, Shaanxi	Prov. Lab	0	-	-	-	-	-	-	-	-	-	-	-	-	0	-	-	-	-	-	-	-	-	-	-	-	-	-	-	-
China, Shandong	Prov. Lab	0	-	-	-	-	-	-	-	-	-	-	-	-	24	24	0	5	0	0	6	0	0	15	0	0	0	0	0	0
China, Shanghai	Prov. Lab	0	-	-	-	-	-	-	-	-	-	-	-	-	8	8	0	5	0	0	8	0	0	2	0	0	0	0	0	0
China, Shanxi	Prov. Lab	0	-	-	-	-	-	-	-	-	-	-	-	-	0	-	-	-	-	-	-	-	-	-	-	-	-	-	-	-
China, Sichuan	Prov. Lab	0	-	-	-	-	-	-	-	-	-	-	-	-	0	-	-	-	-	-	-	-	-	-	-	-	-	-	-	-
China, Tianjin	Prov. Lab	0	-	-	-	-	-	-	-	-	-	-	-	-	0	-	-	-	-	-	-	-	-	-	-	-	-	-	-	-
China, Xinjiang	Prov. Lab	0	-	-	-	-	-	-	-	-	-	-	-	-	12	12	0	14	0	0	21	1	0	14	0	0	0	0	0	0
China, Yunnan	Prov. Lab	1	1	0	1	0	0	0	0	0	0	0	0	0	0	-	-	-	-	-	-	-	-	-	-	-	-	-	-	-
China, Zhejiang	Prov. Lab	0	-	-	-	-	-	-	-	-	-	-	-	-	0	-	-	-	-	-	-	-	-	-	-	-	-	-	-	-
China, Chongqing	CCDC	0	-	-	-	-	-	-	-	-	-	-	-	-	0	-	-	-	-	-	-	-	-	-	-	-	-	-	-	-
China, Guizhou	CCDC	0	-	-	-	-	-	-	-	-	-	-	-	-	0	-	-	-	-	-	-	-	-	-	-	-	-	-	-	-
China, Hainan	CCDC	0	-	-	-	-	-	-	-	-	-	-	-	-	0	-	-	-	-	-	-	-	-	-	-	-	-	-	-	-
China, Hubei	CCDC	0	-	-	-	-	-	-	-	-	-	-	-	-	0	-	-	-	-	-	-	-	-	-	-	-	-	-	-	-
China, Liaoning	CCDC	0	-	-	-	-	-	-	-	-	-	-	-	-	0	-	-	-	-	-	-	-	-	-	-	-	-	-	-	-
China, Neimongol	CCDC	0	-	-	-	-	-	-	-	-	-	-	-	-	0	-	-	-	-	-	-	-	-	-	-	-	-	-	-	-
China, Ningxia	CCDC	0	-	-	-	-	-	-	-	-	-	-	-	-	0	-	-	-	-	-	-	-	-	-	-	-	-	-	-	-
China, Qinghai	CCDC	0	-	-	-	-	-	-	-	-	-	-	-	-	0	-	-	-	-	-	-	-	-	-	-	-	-	-	-	-
China, Tibet	CCDC	0	-	-	-	-	-	-	-	-	-	-	-	-	0	-	-	-	-	-	-	-	-	-	-	-	-	-	-	-
Hong Kong (China)	PHLC	0	-	-	-	-	-	-	-	-	-	-	-	-	0	-	-	-	-	-	-	-	-	-	-	-	-	-	-	-
Total		144	1	0	1	0	0	0	0	0	0	0	13	0	0	87	84	0	44	0	0	69	2	0	54	0	4	0	0	

1. Based on year of collection of sample, if available. Otherwise, based on year of receipt at reference laboratory.

2. CCDC (Chinese Center for Disease Control and Prevention, China); IESR (Institute of Environmental Science and Research, New Zealand); IMR (Institute of Medical Research, Malaysia); NIID (National Institute of Infectious Diseases, Japan); PHI (Public Health Institute, Mongolia); PHLC (Public Health Laboratory Center, Hong Kong); SGH (Singapore General Hospital); VIDRL (Victorian Infectious Diseases Reference Laboratory, Australia)

Table 4. Vaccine-derived poliovirus, 2000–2014

Country	2000	2001	2002	2003	2004	2005	2006	2007	2008	2009	2010	2011	2012	2013	2014
Cambodia						cVDPV3 (1 case)	cVDPV3 (1 case)								
China	aVDPV1 (1 case)	IVDPV1 (1 case) aVDPV3 (1 case)	aVDPV1 (1 case) aVDPV3 (1 case)		cVDPV1 (2 cases) ?VDPV1 (4 cases) ?VDPV2 (1 case)	IVDPV2 (1 case)	aVDPV1 (1 case) ?VDPV1 (7 cases) VDPV3 (1 case)	aVDPV1 (3 cases) ?VDPV1 (1 case)		aVDPV2 (1 case)	aVDPV2 (5 cases) aVDPV3 (2 cases)	aVDPV1 (1 case) aVDPV2 (3 cases) cVDPV2 (2 cases) IVDPV2 (2 cases) IVDPV3 (1 case)	aVDPV1 (1 case) aVDPV2 (2 cases) cVDPV2 (3 cases) IVDPV2 + IVDPV3 (1 case)	aVDPV2 (1 case) IVDPV2 + IVDPV3 (1 case)	aVDPV2 (1 case)
Hong Kong (China)						?VDPV? (3 cases)									
Japan					?VDPV? (1 case)	?VDPV3 (1 case)									
Lao People's Democratic Republic					aVDPV2 (1 case) ?VDPV? (2 cases)										
Mongolia				?VDPV? (1 case)											
Philippines		cVDPV1 (3 cases)													
Viet Nam													aVDPV2 (2 cases)		