

## HIGHLIGHTS

### Update from the 2nd Meeting of the International Health Regulations Emergency Committee

As of 3 August 2014, the WHO Director-General declared that the international spread of wild poliovirus in 2014 continued to constitute a Public Health Emergency of International Concern (PHEIC) and extended the following Temporary Recommendations under the IHR (2005) for States currently exporting wild poliovirus:

These States should:

- officially declare, if not already done, at the level of head of state or government, that the interruption of poliovirus transmission is a national public health emergency;
- ensure that all residents and long-term visitors (i.e. > 4 weeks), who have not received a dose of OPV or inactivated poliovirus vaccine (IPV) between 4 weeks and 12 months prior to international travel;
- ensure that those undertaking urgent travel (i.e. within 4 weeks), who have not received a dose of OPV or IPV in the previous 4 weeks to 12 months, receive a dose of polio vaccine at least by the time of departure as this will still provide benefit, particularly for frequent travellers;
- ensure that such travellers are provided with an International Certificate of Vaccination or Prophylaxis in the form specified in Annex 6 of the International Health Regulations (2005) to record their polio vaccination and serve as proof of vaccination;
- maintain these measures until the following criteria have been met: (i) at least 6 months have passed without new exportations and (ii) there is documentation of full application of high quality eradication activities in all infected and high risk areas; in the absence of such documentation these measures should be maintained until at least 12 months have passed without new exportations.

Similar recommendations were made for residents and long-term visitors to States infected with wild poliovirus but not currently exporting.

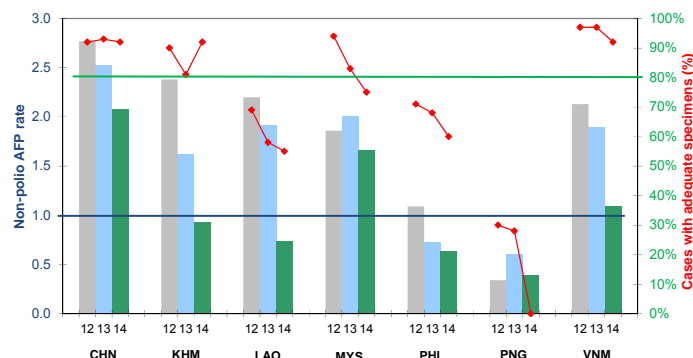
More information can be found at:

<http://www.who.int/mediacentre/news/statements/2014/polio-20140803>

## CONTACT US

Expanded Programme on Immunization  
Regional Office for the Western Pacific  
World Health Organization  
P.O. Box 2932, 1000 Manila, Philippines  
Phone: +63 2 5288001  
Fax: +63 2 5211036, 5260279  
Email: [WPR\\_EPIdata@wpro.who.int](mailto:WPR_EPIdata@wpro.who.int)  
Web: [www.wpro.who.int/immunization](http://www.wpro.who.int/immunization)

Chart 1. Non-polio AFP rate and adequate specimen collection rate, 2012–2014\*



\* AFP rate annualized as of week 31

Chart 3. Polio immunization status of reported AFP cases, 2014

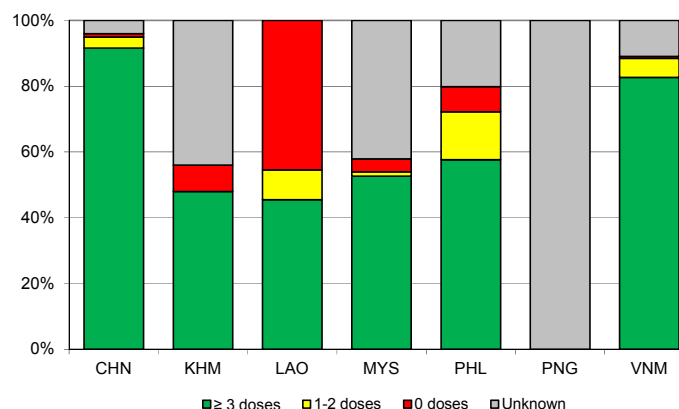


Chart 2. Percent cases with pending classification > 90 days after onset, 2014

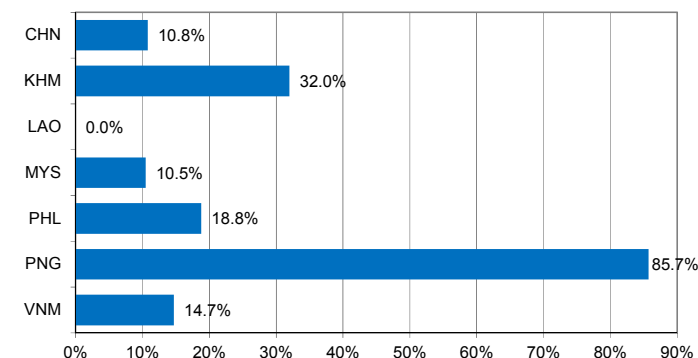
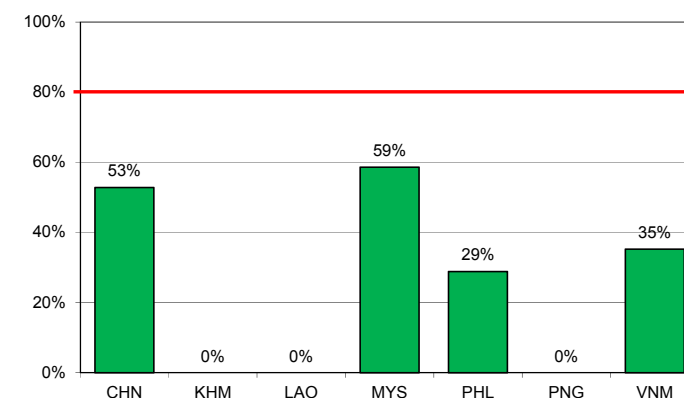


Chart 4. Percentage of samples received at the lab ≤ 3 days of collection, 2014



Note: Priority countries were selected for the charts. Official WHO acronyms have been used for abbreviation: CHN (China), KHM (Cambodia), LAO (Lao People's Democratic Republic), MYS (Malaysia), PHL (Philippines), PNG (Papua New Guinea), and VNM (Viet Nam).

Table 1A. Classification of AFP cases with onset in 2013 and key surveillance indicators

	2012		2013													
	Total reported cases	Annual expected cases <15 years of age	Total reported cases	Classification						Indicators					Latest report date <sup>6</sup>	Days since last report <sup>7</sup>
				Confirmed wild poliovirus	Vaccine-derived poliovirus (VDPV)	Polio-compatible	Discarded (Non-polio)	Pending		Non-polio AFP rate	% with adequate specimens <sup>2</sup>	% with any specimen <sup>3</sup>	% investigated ≤ 2 days of notification <sup>4</sup>	% with 60-day follow-up <sup>5</sup>		
								Total	> 90 days <sup>1</sup> # (%)							
≥ 1	≥ 80%		≥ 80%	≥ 80%												
Australia	56	43	62	0	0	1	61	0	0 (0.0%)	1.44	39%	71%	100%	0%	18-Jul-14	-
Brunei Darussalam	1	1	1	0	0	0	1	0	0 (0.0%)	1.00	100%	100%	100%	-	06-Feb-14	-
Cambodia	107	45	73	0	0	0	73	0	0 (0.0%)	1.62	81%	96%	78%	100%	13-Mar-14	-
China	6173	2225	5623	0	0	1	5622	0	0 (0.0%)	2.53	93%	99%	100%	98%	28-May-14	-
Hong Kong (China)	14	8	12	0	0	0	12	0	0 (0.0%)	1.50	100%	100%	100%	-	06-Feb-14	-
Japan	0	167	0	-	-	-	-	-	-	-	-	-	-	-	-	-
Lao People's Democratic Republic	55	25	48	0	0	0	48	0	0 (0.0%)	1.92	58%	90%	98%	100%	26-May-14	-
Macao (China)	0	1	1	0	0	0	1	0	0 (0.0%)	1.00	100%	100%	100%	-	14-Jan-14	-
Malaysia	141	77	155	0	0	0	155	0	0 (0.0%)	2.01	83%	100%	85%	100%	31-Mar-14	-
Mongolia	9	7	7	0	0	0	7	0	0 (0.0%)	1.00	86%	100%	100%	100%	07-Mar-14	-
New Zealand	8	9	12	0	0	0	12	0	0 (0.0%)	1.33	50%	83%	83%	100%	27-Feb-14	-
Papua New Guinea	10	30	18	0	0	0	18	0	0 (0.0%)	0.60	28%	83%	83%	100%	26-Feb-14	-
Philippines	403	378	277	0	0	2	275	0	0 (0.0%)	0.73	68%	96%	98%	50%	08-Apr-14	-
Republic of Korea	95	76	84	0	0	0	84	0	0 (0.0%)	1.11	93%	100%	94%	100%	20-Mar-14	-
Singapore	10	6	7	0	0	0	7	0	0 (0.0%)	1.17	71%	100%	86%	100%	08-Jan-14	-
Viet Nam	514	241	459	0	0	0	459	0	0 (0.0%)	1.90	97%	99%	92%	100%	17-Apr-14	-
Pacific island countries	4	10	8	0	0	0	8	0	0 (0.0%)	0.80	63%	100%	100%	100%	28-Jul-14	-
<b>Total</b>	<b>7600</b>	<b>3349</b>	<b>6847</b>	<b>0</b>	<b>0</b>	<b>4</b>	<b>6843</b>	<b>0</b>	<b>0 (0.0%)</b>	<b>2.04</b>	<b>91%</b>	<b>99%</b>	<b>98%</b>	<b>86%</b>		

1. Number (%) of reported cases pending classification more than 90 days from date of onset of paralysis to date of last report
2. Percentage of reported cases with two stool specimens collected 24 hours apart and within 14 days of onset of paralysis
3. Percentage of reported cases with at least one specimen
4. Percentage of reported cases investigated within two days of notification
5. Percentage of reported cases with inadequate specimens followed-up within 60 days of onset of paralysis
6. Report date is fixed as soon as all cases for the year have been classified
7. Countries are expected to submit data at least once per month to WPRO

Green	Reached or surpassed target
Yellow	Nearly reached target: 0.5–0.99 for non-polio AFP rate; 60–79% for other indicators
Red	Substantially below target

Table 1B. Classification of AFP cases with onset in 2014 and key surveillance indicators

	2013		2014													
	Total reported cases	Annual expected cases <15 years of age	Total reported cases	Classification						Indicators					Latest report date	Days since last report <sup>7</sup>
				Confirmed wild poliovirus	Vaccine-derived poliovirus (VDPV)	Polio-compatible	Discarded (Non-polio)	Pending		Non-polio AFP rate <sup>2</sup>	% with adequate specimens <sup>3</sup>	% with any specimen <sup>4</sup>	% investigated ≤ 2 days of notification <sup>5</sup>	% with 60-day follow-up <sup>6</sup>		
								Total	> 90 days <sup>1</sup> # (%)							
≥ 1	≥ 80%		≥ 80%	≥ 80%												
Australia	62	44	18	0	0	0	15	3	2 (11.1%)	0.69	39%	72%	83%	0%	25-Jun-14	40
Brunei Darussalam	1	1	1	0	0	0	1	0	0 (0.0%)	1.68	100%	100%	100%	-	22-Jul-14	13
Cambodia	73	45	25	0	0	0	0	25	8 (32.0%)	0.93	92%	100%	84%	0%	24-Jul-14	11
China	5623	2225	2753	0	0	0	1544	1209	298 (10.8%)	2.08	92%	99%	100%	78%	30-Jul-14	5
Hong Kong (China)	12	8	10	0	0	0	9	1	0 (0.0%)	2.10	90%	100%	100%	100%	01-Aug-14	3
Japan	0	167	0	-	-	-	-	-	-	-	-	-	-	-	-	-
Lao People's Democratic Republic	48	25	11	0	0	0	5	6	0 (0.0%)	0.74	55%	100%	91%	0%	06-May-14	90
Macao (China)	1	1	1	0	0	0	1	0	0 (0.0%)	1.68	0%	100%	100%	100%	21-Jul-14	14
Malaysia	155	77	76	0	0	0	58	18	8 (10.5%)	1.66	75%	100%	55%	32%	20-Jun-14	45
Mongolia	7	8	3	0	0	0	1	2	0 (0.0%)	0.63	100%	100%	100%	-	07-Jul-14	28
New Zealand	12	9	2	0	0	0	0	2	2 (100.0%)	0.37	50%	100%	100%	100%	22-Jul-14	13
Papua New Guinea	18	30	7	0	0	0	0	7	6 (85.7%)	0.39	0%	100%	57%	0%	17-Jul-14	18
Philippines	277	378	144	0	0	0	64	80	27 (18.8%)	0.64	60%	88%	97%	7%	08-Jul-14	27
Republic of Korea	84	76	53	0	0	0	43	10	0 (0.0%)	1.17	81%	100%	96%	80%	18-Jul-14	17
Singapore	7	6	5	0	0	0	5	0	0 (0.0%)	1.40	80%	100%	100%	100%	04-Aug-14	0
Viet Nam	459	241	156	0	0	0	65	91	23 (14.7%)	1.09	92%	96%	93%	42%	25-Jul-14	10
Pacific island countries	8	10	7	0	0	0	6	1	0 (0.0%)	1.17	71%	100%	100%	50%	28-Jul-14	7
<b>Total</b>	<b>6847</b>	<b>3351</b>	<b>3272</b>	<b>0</b>	<b>0</b>	<b>0</b>	<b>1817</b>	<b>1455</b>	<b>374 (11.4%)</b>	<b>1.64</b>	<b>89%</b>	<b>98%</b>	<b>98%</b>	<b>57%</b>		

1. Number (%) of reported cases pending classification more than 90 days from date of onset of paralysis to date of last report
2. Annualized non-polio AFP rate per 100 000 population under 15 years of age
3. Percentage of reported cases with two stool specimens collected 24 hours apart and within 14 days of onset of paralysis
4. Percentage of reported cases with at least one specimen
5. Percentage of reported cases investigated within two days of notification
6. Percentage of reported cases with inadequate specimens followed-up within 60 days of onset of paralysis
7. Countries are expected to submit data at least once per month to WPRO

Green	Reached or surpassed target
Yellow	Nearly reached target: 0.5–0.99 for non-polio AFP rate; 60–79% for other indicators
Red	Substantially below target



Table 2B. Laboratory investigation of AFP cases with onset in 2014 and key laboratory indicators

Country	National polio laboratory <sup>1</sup>	Total no. of AFP cases with specimens	Virus isolation results							% results reported ≤ 14 days <sup>2</sup>	% specimens positive for NPEV	Latest report date	Intratyphic differentiation / Sequencing lab <sup>1</sup>	No. of isolates referred	Intratyphic differentiation (ITD) results									NPEV <sup>3</sup>	Pending ITD	Discordant pending sequencing	% ITD results reported ≤ 7 days of receipt ≥ 80%			
			L20B positive	L20B positive + NPEV	NPEV only	Negative	Pending ≤ 14 days	Pending > 14 days	Type 1						Type 2			Type 3												
									Wild						Sabin	VDPV	Wild	Sabin	VDPV	Wild	Sabin	VDPV								
Australia	VIDRL	23	0	0	2	18	3	0	95%	5%	01-Aug-14	VIDRL	0	-	-	-	-	-	-	-	-	-	-	-	-	-	-	-	-	
Brunei Darussalam	VIDRL	1	0	0	0	1	0	0	0%	0%	01-Aug-14	VIDRL	0	-	-	-	-	-	-	-	-	-	-	-	-	-	-	-	-	
Papua New Guinea	VIDRL	7	0	1	3	3	0	0	100%	58%	01-Aug-14	VIDRL	0	-	-	-	-	-	-	-	-	-	-	-	-	-	-	-	-	
Pacific island countries	VIDRL	7	0	0	0	6	1	0	100%	0%	01-Aug-14	VIDRL	0	-	-	-	-	-	-	-	-	-	-	-	-	-	-	-	-	
Japan	NIID	0	-	-	-	-	-	-	-	-	-	NIID	0	-	-	-	-	-	-	-	-	-	-	-	-	-	-	-	-	
Cambodia	NIID	21	4	0	3	14	0	0	95%	10%	28-Jul-14	NIID	8	0	0	0	0	8	0	0	0	0	0	0	0	0	0	0	100%	
Lao People's Democratic Republic	NIID	18	0	0	5	13	0	0	100%	25%	01-Aug-14	NIID	0	-	-	-	-	-	-	-	-	-	-	-	-	-	-	-	-	
Malaysia	IMR	102	0	0	3	89	10	0	100%	3%	11-Jul-14	IMR	0	-	-	-	-	-	-	-	-	-	-	-	-	-	-	-	-	
Mongolia	PHI	3	0	0	0	3	0	0	100%	0%	07-Jul-14	NIID	0	-	-	-	-	-	-	-	-	-	-	-	-	-	-	-	-	
New Zealand	IESR	2	0	0	1	1	0	0	100%	50%	04-Jul-14	IESR	0	-	-	-	-	-	-	-	-	-	-	-	-	-	-	-	-	
Philippines	RITM	189	1	0	9	169	0	12	91%	4%	25-Jul-14	RITM	2	0	0	0	0	2	0	0	0	0	0	0	0	0	0	0	100%	
Republic of Korea	NIH	53	0	0	3	43	7	0	93%	5%	18-Jul-14	NIH	0	-	-	-	-	-	-	-	-	-	-	-	-	-	-	-	-	
Singapore	SGH	5	0	0	0	5	0	0	100%	0%	15-Jul-14	SGH	0	-	-	-	-	-	-	-	-	-	-	-	-	-	-	-	-	
Viet Nam, North	NIHE	89	0	0	12	71	4	2	100%	13%	09-Jul-14	NIHE	0	-	-	-	-	-	-	-	-	-	-	-	-	-	-	-	-	
Viet Nam, South	PI	70	0	0	8	52	7	3	93%	12%	04-Jul-14	PI	0	-	-	-	-	-	-	-	-	-	-	-	-	-	-	-	-	
China	CCDC	2716	48	1	263	2352	1	51	63%	8%	30-Jul-14		131	0	33	0	0	49	2	0	47	0	3	0	0	0	0	0	96%	
China, Anhui	Prov. Lab	121	3	0	6	112	0	0	61%	5%		Prov. Lab	5	0	0	0	0	3	0	0	2	0	0	0	0	0	0	0	100%	
China, Beijing	Prov. Lab	15	0	0	0	14	0	1	64%	0%		Prov. Lab	5	0	2	0	0	0	0	0	3	0	0	0	0	0	0	0	100%	
China, Fujian	Prov. Lab	103	0	0	14	89	0	0	91%	10%		Prov. Lab	0	-	-	-	-	-	-	-	-	-	-	-	-	-	-	-	-	
China, Gansu	Prov. Lab	63	1	0	3	59	0	0	64%	4%		Prov. Lab	6	0	2	0	0	2	0	0	2	0	0	0	0	0	0	0	100%	
China, Guangdong	Prov. Lab	184	1	0	23	160	0	0	75%	9%		Prov. Lab	4	0	2	0	0	2	0	0	0	0	0	0	0	0	0	0	50%	
China, Guangxi	Prov. Lab	124	2	0	31	91	0	0	25%	20%		Prov. Lab	5	0	0	0	0	2	0	0	3	0	0	0	0	0	0	0	100%	
China, Hebei	Prov. Lab	142	3	1	13	123	0	2	57%	7%		Prov. Lab	5	0	2	0	0	2	0	0	1	0	0	0	0	0	0	0	100%	
China, Heilongjiang	Prov. Lab	73	0	0	2	71	0	0	82%	2%		Prov. Lab	0	0	0	0	0	0	0	0	0	0	1	0	0	0	0	0	100%	
China, Henan	Prov. Lab	249	1	0	26	210	0	12	74%	9%		Prov. Lab	2	0	0	0	0	0	0	0	2	0	0	0	0	0	0	0	100%	
China, Hunan	Prov. Lab	118	2	0	15	96	0	5	80%	12%		Prov. Lab	2	0	2	0	0	0	0	0	0	0	0	0	0	0	0	0	100%	
China, Jiangsu	Prov. Lab	141	10	0	2	127	0	2	53%	1%		Prov. Lab	26	0	6	0	0	14	0	0	6	0	0	0	0	0	0	0	95%	
China, Jiangxi	Prov. Lab	89	0	0	8	75	0	6	91%	8%		Prov. Lab	0	-	-	-	-	-	-	-	-	-	-	-	-	-	-	-	-	
China, Jilin	Prov. Lab	31	0	0	3	28	0	0	63%	8%		Prov. Lab	0	-	-	-	-	-	-	-	-	-	-	-	-	-	-	-	-	
China, Shaanxi	Prov. Lab	46	0	0	3	41	0	2	74%	7%		Prov. Lab	0	-	-	-	-	-	-	-	-	-	-	-	-	-	-	-	-	
China, Shandong	Prov. Lab	199	2	0	13	178	1	5	70%	5%		Prov. Lab	4	0	2	0	0	0	0	0	2	0	0	0	0	0	0	0	100%	
China, Shanghai	Prov. Lab	15	2	0	0	12	0	1	97%	0%		Prov. Lab	6	0	0	0	0	2	0	0	4	0	0	0	0	0	0	0	100%	
China, Shanxi	Prov. Lab	122	3	0	1	117	0	1	33%	1%		Prov. Lab	8	0	0	0	0	4	2	0	2	0	0	0	0	0	0	0	100%	
China, Sichuan	Prov. Lab	175	3	0	19	150	0	3	27%	10%		Prov. Lab	10	0	4	0	0	4	0	0	2	0	0	0	0	0	0	0	100%	
China, Tianjin	Prov. Lab	10	0	0	2	8	0	0	90%	15%		Prov. Lab	0	-	-	-	-	-	-	-	-	-	-	-	-	-	-	-	-	
China, Xinjiang	Prov. Lab	43	1	0	2	40	0	0	93%	4%		Prov. Lab	4	0	2	0	0	2	0	0	0	0	0	0	0	0	0	0	100%	
China, Yunnan	Prov. Lab	144	11	0	24	109	0	0	46%	14%		Prov. Lab	24	0	7	0	0	7	0	0	10	0	0	0	0	0	0	0	93%	
China, Zhejiang	Prov. Lab	87	1	0	7	77	0	2	46%	6%		Prov. Lab	3	0	0	0	0	1	0	0	2	0	2	0	0	0	0	0	100%	
China, Chongqing	Prov. Lab	43	0	0	8	31	0	4	68%	15%		CCDC	4	0	0	0	0	2	0	0	2	0	0	0	0	0	0	0	100%	
China, Guizhou	Prov. Lab	110	1	0	15	93	0	1	88%	13%		CCDC	4	0	0	0	0	2	0	0	2	0	0	0	0	0	0	0	100%	
China, Hainan	Prov. Lab	16	0	0	5	11	0	0	69%	25%		CCDC	0	-	-	-	-	-	-	-	-	-	-	-	-	-	-	-	-	
China, Hubei	Prov. Lab	97	0	0	14	83	0	0	54%	15%		CCDC	2	0	2	0	0	0	0	0	0	0	0	0	0	0	0	0	100%	
China, Liaoning	Prov. Lab	72	0	0	2	67	0	3	84%	1%		CCDC	2	0	0	0	0	0	0	0	2	0	0	0	0	0	0	0	100%	
China, Neimongol	Prov. Lab	53	0	0	2	50	0	1	63%	2%		CCDC	0	-	-	-	-	-	-	-	-	-	-	-	-	-	-	-	-	
China, Ningxia	Prov. Lab	20	1	0	0	19	0	0	73%	0%		CCDC	0	-	-	-	-	-	-	-	-	-	-	-	-	-	-	-	-	
China, Qinghai	Prov. Lab	10	0	0	0	10	0	0	100%	0%		CCDC	0	-	-	-	-	-	-	-	-	-	-	-	-	-	-	-	-	
China, Tibet	Prov. Lab	1	0	0	0	1	0	0	0%	0%		CCDC	0	-	-	-	-	-	-	-	-	-	-	-	-	-	-	-	-	
Hong Kong (China)	PHLC	9	0	0	1	8	0	0	85%	4%	22-Jul-14	PHLC	0	-	-	-	-	-	-	-	-	-	-	-	-	-	-	-	-	
Macao (China)	PHLC	0	-	-	-	-	-	-	-	-	22-Jul-14	PHLC	0	-	-	-	-	-	-	-	-	-	-	-	-	-	-	-	-	-
<b>Total</b>		<b>3315</b>	<b>53</b>	<b>2</b>	<b>313</b>	<b>2848</b>	<b>33</b>	<b>68</b>	<b>66%</b>	<b>8%</b>			<b>141</b>	<b>0</b>	<b>33</b>	<b>0</b>	<b>0</b>	<b>59</b>	<b>2</b>	<b>0</b>	<b>47</b>	<b>0</b>	<b>3</b>	<b>0</b>	<b>0</b>	<b>0</b>	<b>0</b>	<b>97%</b>		

1. IESR (Institute of Environmental Science and Research, New Zealand); IMR (Institute of Medical Research, Malaysia); NIH (National Institute of Health, Republic of Korea); NIHE (National Institute of Hygiene and Epidemiology, Ha Noi, Viet Nam); NIID (National Institute of Infectious Diseases, Japan); PHI (Public Health Institute, Mongolia); PHLC (Public Health Laboratory Center, Hong Kong); PI (Pasteur Institute, Ho Chi Minh, Viet Nam); RITM (Research Institute for Tropical Medicine, Philippines); SGH (Singapore General Hospital); VIDRL (Victorian Infectious Diseases Reference Laboratory, Australia)

2. The target of 14 days for the timeliness of virus isolation will be used for all polio laboratories

3. NPEV growing in L20B cells

4. Twenty-two provincial laboratories in China perform ITD from 2013

Table 3A. Laboratory confirmation of polio isolates from other sources in 2013 <sup>1</sup>

Country	Intratyptic differentiation lab. <sup>2</sup>	Non-AFP cases													Environmental samples																					
		Total number of non-AFP cases tested for polio	Total number of non-AFP cases with polio isolates	Type 1			Type 2			Type 3			NPEV grown in L20B	Pending ITD	Discordant pending sequencing	Total number of samples processed	Total number of samples with polio isolates	Type 1			Type 2			Type 3			NPEV grown in L20B	Pending ITD	Discordant pending sequencing							
				Wild	Sabin	VDPV	Wild	Sabin	VDPV	Wild	Sabin	VDPV						Wild	Sabin	VDPV	Wild	Sabin	VDPV	Wild	Sabin	VDPV										
Australia	VIDRL	269	1	0	0	0	0	1	0	0	0	0	0	0	0	0	0	-	-	-	-	-	-	-	-	-	-	-	-	-	-	-	-	-	-	-
Japan	NIID	0	-	-	-	-	-	-	-	-	-	-	-	-	-	-	-	0	-	-	-	-	-	-	-	-	-	-	-	-	-	-	-	-	-	
Malaysia	IMR	0	-	-	-	-	-	-	-	-	-	-	-	-	-	-	33	4	0	1	0	0	2	0	0	1	0	27	0	0	-	-	-	-	-	
Mongolia	PHI	158	0	0	0	0	0	0	0	0	0	0	56	0	0	0	-	-	-	-	-	-	-	-	-	-	-	-	-	-	-	-	-	-	-	
New Zealand	IESR	0	-	-	-	-	-	-	-	-	-	-	-	-	-	-	0	-	-	-	-	-	-	-	-	-	-	-	-	-	-	-	-	-	-	
Philippines	VIDRL	6	6	0	5	0	0	1	0	0	1	0	0	0	0	0	0	-	-	-	-	-	-	-	-	-	-	-	-	-	-	-	-	-	-	
Republic of Korea	NIID	0	-	-	-	-	-	-	-	-	-	-	-	-	-	-	0	-	-	-	-	-	-	-	-	-	-	-	-	-	-	-	-	-	-	
Singapore	SGH	0	-	-	-	-	-	-	-	-	-	-	-	-	-	-	0	-	-	-	-	-	-	-	-	-	-	-	-	-	-	-	-	-	-	
Viet Nam, North	NIID	0	-	-	-	-	-	-	-	-	-	-	-	-	-	-	0	-	-	-	-	-	-	-	-	-	-	-	-	-	-	-	-	-	-	
Viet Nam, South	NIID	0	-	-	-	-	-	-	-	-	-	-	-	-	-	-	0	-	-	-	-	-	-	-	-	-	-	-	-	-	-	-	-	-	-	
China (total)		28	28	0	15	0	0	11	1	0	13	0	0	0	0	0	0	-	-	-	-	-	-	-	-	-	-	-	-	-	-	-	-	-	-	
China, Anhui	Prov. Lab	0	-	-	-	-	-	-	-	-	-	-	-	-	-	-	0	-	-	-	-	-	-	-	-	-	-	-	-	-	-	-	-	-	-	
China, Beijing	Prov. Lab	0	-	-	-	-	-	-	-	-	-	-	-	-	-	-	0	-	-	-	-	-	-	-	-	-	-	-	-	-	-	-	-	-	-	
China, Fujian	Prov. Lab	0	-	-	-	-	-	-	-	-	-	-	-	-	-	-	0	-	-	-	-	-	-	-	-	-	-	-	-	-	-	-	-	-	-	
China, Gansu	Prov. Lab	7	7	0	7	0	0	4	0	0	4	0	0	0	0	0	0	-	-	-	-	-	-	-	-	-	-	-	-	-	-	-	-	-	-	
China, Guangdong	Prov. Lab	1	1	0	0	0	0	0	1	0	0	0	0	0	0	0	0	-	-	-	-	-	-	-	-	-	-	-	-	-	-	-	-	-	-	
China, Guangxi	Prov. Lab	0	-	-	-	-	-	-	-	-	-	-	-	-	-	-	0	-	-	-	-	-	-	-	-	-	-	-	-	-	-	-	-	-	-	
China, Hebei	Prov. Lab	2	2	0	2	0	0	0	0	0	0	0	0	0	0	0	0	-	-	-	-	-	-	-	-	-	-	-	-	-	-	-	-	-	-	
China, Heilongjiang	Prov. Lab	2	2	0	0	0	0	0	0	0	2	0	0	0	0	0	0	-	-	-	-	-	-	-	-	-	-	-	-	-	-	-	-	-	-	
China, Henan	Prov. Lab	0	-	-	-	-	-	-	-	-	-	-	-	-	-	-	0	-	-	-	-	-	-	-	-	-	-	-	-	-	-	-	-	-	-	
China, Hunan	Prov. Lab	0	-	-	-	-	-	-	-	-	-	-	-	-	-	-	0	-	-	-	-	-	-	-	-	-	-	-	-	-	-	-	-	-	-	
China, Jiangsu	Prov. Lab	0	-	-	-	-	-	-	-	-	-	-	-	-	-	-	0	-	-	-	-	-	-	-	-	-	-	-	-	-	-	-	-	-	-	
China, Jiangxi	Prov. Lab	2	2	0	0	0	0	1	0	0	1	0	0	0	0	0	0	-	-	-	-	-	-	-	-	-	-	-	-	-	-	-	-	-	-	
China, Jilin	Prov. Lab	0	-	-	-	-	-	-	-	-	-	-	-	-	-	-	0	-	-	-	-	-	-	-	-	-	-	-	-	-	-	-	-	-	-	
China, Shaanxi	Prov. Lab	0	-	-	-	-	-	-	-	-	-	-	-	-	-	-	0	-	-	-	-	-	-	-	-	-	-	-	-	-	-	-	-	-	-	
China, Shandong	Prov. Lab	2	2	0	2	0	0	1	0	0	1	0	0	0	0	0	0	-	-	-	-	-	-	-	-	-	-	-	-	-	-	-	-	-	-	
China, Shanghai	Prov. Lab	2	2	0	1	0	0	0	0	0	1	0	0	0	0	0	0	-	-	-	-	-	-	-	-	-	-	-	-	-	-	-	-	-	-	
China, Shanxi	Prov. Lab	0	-	-	-	-	-	-	-	-	-	-	-	-	-	-	0	-	-	-	-	-	-	-	-	-	-	-	-	-	-	-	-	-	-	
China, Sichuan	Prov. Lab	2	2	0	1	0	0	0	0	0	1	0	0	0	0	0	0	-	-	-	-	-	-	-	-	-	-	-	-	-	-	-	-	-	-	
China, Tianjin	Prov. Lab	1	1	0	1	0	0	0	0	0	1	0	0	0	0	0	0	-	-	-	-	-	-	-	-	-	-	-	-	-	-	-	-	-	-	
China, Xinjiang	Prov. Lab	2	2	0	0	0	0	2	0	0	0	0	0	0	0	0	0	-	-	-	-	-	-	-	-	-	-	-	-	-	-	-	-	-	-	
China, Yunnan	Prov. Lab	0	-	-	-	-	-	-	-	-	-	-	-	-	-	-	0	-	-	-	-	-	-	-	-	-	-	-	-	-	-	-	-	-	-	
China, Zhejiang	Prov. Lab	0	-	-	-	-	-	-	-	-	-	-	-	-	-	-	0	-	-	-	-	-	-	-	-	-	-	-	-	-	-	-	-	-	-	
China, Chongqing	CCDC	0	-	-	-	-	-	-	-	-	-	-	-	-	-	-	0	-	-	-	-	-	-	-	-	-	-	-	-	-	-	-	-	-	-	
China, Guizhou	CCDC	0	-	-	-	-	-	-	-	-	-	-	-	-	-	-	0	-	-	-	-	-	-	-	-	-	-	-	-	-	-	-	-	-	-	
China, Hainan	CCDC	1	1	0	0	0	0	1	0	0	0	0	0	0	0	0	0	-	-	-	-	-	-	-	-	-	-	-	-	-	-	-	-	-	-	
China, Hubei	CCDC	0	-	-	-	-	-	-	-	-	-	-	-	-	-	-	0	-	-	-	-	-	-	-	-	-	-	-	-	-	-	-	-	-	-	
China, Liaoning	CCDC	0	-	-	-	-	-	-	-	-	-	-	-	-	-	-	0	-	-	-	-	-	-	-	-	-	-	-	-	-	-	-	-	-	-	
China, Neimongol	CCDC	3	3	0	0	0	0	1	0	0	2	0	0	0	0	0	0	-	-	-	-	-	-	-	-	-	-	-	-	-	-	-	-	-	-	
China, Ningxia	CCDC	1	1	0	1	0	0	1	0	0	0	0	0	0	0	0	0	-	-	-	-	-	-	-	-	-	-	-	-	-	-	-	-	-	-	
China, Qinghai	CCDC	0	-	-	-	-	-	-	-	-	-	-	-	-	-	-	0	-	-	-	-	-	-	-	-	-	-	-	-	-	-	-	-	-	-	
China, Tibet	CCDC	0	-	-	-	-	-	-	-	-	-	-	-	-	-	-	0	-	-	-	-	-	-	-	-	-	-	-	-	-	-	-	-	-	-	
Hong Kong (China)	PHLC	1	1	0	1	0	0	0	0	0	0	0	0	0	0	0	0	-	-	-	-	-	-	-	-	-	-	-	-	-	-	-	-	-	-	
<b>Total</b>		<b>462</b>	<b>36</b>	<b>0</b>	<b>21</b>	<b>0</b>	<b>0</b>	<b>13</b>	<b>1</b>	<b>0</b>	<b>14</b>	<b>0</b>	<b>56</b>	<b>0</b>	<b>0</b>	<b>33</b>	<b>4</b>	<b>0</b>	<b>1</b>	<b>0</b>	<b>0</b>	<b>2</b>	<b>0</b>	<b>0</b>	<b>1</b>	<b>0</b>	<b>27</b>	<b>0</b>	<b>0</b>	<b>0</b>	<b>0</b>	<b>0</b>	<b>0</b>	<b>0</b>		

1. Based on year of collection of sample, if available. Otherwise, based on year of receipt at reference laboratory.

2. CCDC (Chinese Center for Disease Control and Prevention, China); IESR (Institute of Environmental Science and Research, New Zealand); IMR (Institute of Medical Research, Malaysia); NIID (National Institute of Infectious Diseases, Japan); PHI (Public Health Institute, Mongolia); PHLC (Public Health Laboratory Center, Hong Kong); SGH (Singapore General Hospital); VIDRL (Victorian Infectious Diseases Reference Laboratory, Australia)

Table 3B. Laboratory confirmation of polio isolates from other sources in 2014 <sup>1</sup>

Country	Intratyptic differentiation lab <sup>2</sup>	Non-AFP cases													Environmental samples														
		Total number of non-AFP cases tested for polio	Total number of non-AFP cases with polio isolates	Type 1			Type 2			Type 3			NPEV grown in L20B	Pending ITD	Discordant pending sequencing	Total number of samples processed	Total number of samples with polio isolates	Type 1			Type 2			Type 3			NPEV grown in L20B	Pending ITD	Discordant pending sequencing
				Wild	Sabin	VDPV	Wild	Sabin	VDPV	Wild	Sabin	VDPV						Wild	Sabin	VDPV	Wild	Sabin	VDPV	Wild	Sabin	VDPV			
Australia	VIDRL	10	0	0	0	0	0	0	0	0	0	0	0	0	0	0	-	-	-	-	-	-	-	-	-	-	-	-	
Japan	NIID	0	-	-	-	-	-	-	-	-	-	-	-	-	-	0	-	-	-	-	-	-	-	-	-	-	-	-	
Malaysia	IMR	0	-	-	-	-	-	-	-	-	-	-	-	-	9	6	0	1	0	0	0	0	0	5	0	4	0	0	
Mongolia	PHI	132	0	0	0	0	0	0	0	0	0	13	0	0	0	-	-	-	-	-	-	-	-	-	-	-	-		
New Zealand	IESR	0	-	-	-	-	-	-	-	-	-	-	-	-	0	-	-	-	-	-	-	-	-	-	-	-	-		
Philippines	VIDRL	0	-	-	-	-	-	-	-	-	-	-	-	-	0	-	-	-	-	-	-	-	-	-	-	-	-		
Republic of Korea	NIID	0	-	-	-	-	-	-	-	-	-	-	-	-	0	-	-	-	-	-	-	-	-	-	-	-	-		
Singapore	SGH	0	-	-	-	-	-	-	-	-	-	-	-	-	0	-	-	-	-	-	-	-	-	-	-	-	-		
Viet Nam, North	NIID	0	-	-	-	-	-	-	-	-	-	-	-	-	0	-	-	-	-	-	-	-	-	-	-	-	-		
Viet Nam, South	NIID	1	0	0	0	0	0	0	0	0	0	0	0	0	0	-	-	-	-	-	-	-	-	-	-	-	-		
China (total)		1	1	0	1	0	0	0	0	0	0	0	0	0	0	-	-	-	-	-	-	-	-	-	-	-	-		
China, Anhui	Prov. Lab	0	-	-	-	-	-	-	-	-	-	-	-	-	0	-	-	-	-	-	-	-	-	-	-	-	-		
China, Beijing	Prov. Lab	0	-	-	-	-	-	-	-	-	-	-	-	-	0	-	-	-	-	-	-	-	-	-	-	-	-		
China, Fujian	Prov. Lab	0	-	-	-	-	-	-	-	-	-	-	-	-	0	-	-	-	-	-	-	-	-	-	-	-	-		
China, Gansu	Prov. Lab	0	-	-	-	-	-	-	-	-	-	-	-	-	0	-	-	-	-	-	-	-	-	-	-	-	-		
China, Guangdong	Prov. Lab	0	-	-	-	-	-	-	-	-	-	-	-	-	0	-	-	-	-	-	-	-	-	-	-	-	-		
China, Guangxi	Prov. Lab	0	-	-	-	-	-	-	-	-	-	-	-	-	0	-	-	-	-	-	-	-	-	-	-	-	-		
China, Hebei	Prov. Lab	0	-	-	-	-	-	-	-	-	-	-	-	-	0	-	-	-	-	-	-	-	-	-	-	-	-		
China, Heilongjiang	Prov. Lab	0	-	-	-	-	-	-	-	-	-	-	-	-	0	-	-	-	-	-	-	-	-	-	-	-	-		
China, Henan	Prov. Lab	0	-	-	-	-	-	-	-	-	-	-	-	-	0	-	-	-	-	-	-	-	-	-	-	-	-		
China, Hunan	Prov. Lab	0	-	-	-	-	-	-	-	-	-	-	-	-	0	-	-	-	-	-	-	-	-	-	-	-	-		
China, Jiangsu	Prov. Lab	0	-	-	-	-	-	-	-	-	-	-	-	-	0	-	-	-	-	-	-	-	-	-	-	-	-		
China, Jiangxi	Prov. Lab	0	-	-	-	-	-	-	-	-	-	-	-	-	0	-	-	-	-	-	-	-	-	-	-	-	-		
China, Jilin	Prov. Lab	0	-	-	-	-	-	-	-	-	-	-	-	-	0	-	-	-	-	-	-	-	-	-	-	-	-		
China, Shaanxi	Prov. Lab	0	-	-	-	-	-	-	-	-	-	-	-	-	0	-	-	-	-	-	-	-	-	-	-	-	-		
China, Shandong	Prov. Lab	0	-	-	-	-	-	-	-	-	-	-	-	-	0	-	-	-	-	-	-	-	-	-	-	-	-		
China, Shanghai	Prov. Lab	0	-	-	-	-	-	-	-	-	-	-	-	-	0	-	-	-	-	-	-	-	-	-	-	-	-		
China, Shanxi	Prov. Lab	0	-	-	-	-	-	-	-	-	-	-	-	-	0	-	-	-	-	-	-	-	-	-	-	-	-		
China, Sichuan	Prov. Lab	0	-	-	-	-	-	-	-	-	-	-	-	-	0	-	-	-	-	-	-	-	-	-	-	-	-		
China, Tianjin	Prov. Lab	0	-	-	-	-	-	-	-	-	-	-	-	-	0	-	-	-	-	-	-	-	-	-	-	-	-		
China, Xinjiang	Prov. Lab	0	-	-	-	-	-	-	-	-	-	-	-	-	0	-	-	-	-	-	-	-	-	-	-	-	-		
China, Yunnan	Prov. Lab	1	1	0	1	0	0	0	0	0	0	0	0	0	0	-	-	-	-	-	-	-	-	-	-	-	-		
China, Zhejiang	Prov. Lab	0	-	-	-	-	-	-	-	-	-	-	-	-	0	-	-	-	-	-	-	-	-	-	-	-	-		
China, Chongqing	CCDC	0	-	-	-	-	-	-	-	-	-	-	-	-	0	-	-	-	-	-	-	-	-	-	-	-	-		
China, Guizhou	CCDC	0	-	-	-	-	-	-	-	-	-	-	-	-	0	-	-	-	-	-	-	-	-	-	-	-	-		
China, Hainan	CCDC	0	-	-	-	-	-	-	-	-	-	-	-	-	0	-	-	-	-	-	-	-	-	-	-	-	-		
China, Hubei	CCDC	0	-	-	-	-	-	-	-	-	-	-	-	-	0	-	-	-	-	-	-	-	-	-	-	-	-		
China, Liaoning	CCDC	0	-	-	-	-	-	-	-	-	-	-	-	-	0	-	-	-	-	-	-	-	-	-	-	-	-		
China, Neimongol	CCDC	0	-	-	-	-	-	-	-	-	-	-	-	-	0	-	-	-	-	-	-	-	-	-	-	-	-		
China, Ningxia	CCDC	0	-	-	-	-	-	-	-	-	-	-	-	-	0	-	-	-	-	-	-	-	-	-	-	-	-		
China, Qinghai	CCDC	0	-	-	-	-	-	-	-	-	-	-	-	-	0	-	-	-	-	-	-	-	-	-	-	-	-		
China, Tibet	CCDC	0	-	-	-	-	-	-	-	-	-	-	-	-	0	-	-	-	-	-	-	-	-	-	-	-	-		
Hong Kong (China)	PHLC	0	-	-	-	-	-	-	-	-	-	-	-	-	0	-	-	-	-	-	-	-	-	-	-	-	-		
<b>Total</b>		<b>144</b>	<b>1</b>	<b>0</b>	<b>1</b>	<b>0</b>	<b>0</b>	<b>0</b>	<b>0</b>	<b>0</b>	<b>0</b>	<b>13</b>	<b>0</b>	<b>0</b>	<b>9</b>	<b>6</b>	<b>0</b>	<b>1</b>	<b>0</b>	<b>0</b>	<b>0</b>	<b>0</b>	<b>0</b>	<b>5</b>	<b>0</b>	<b>4</b>	<b>0</b>		

1. Based on year of collection of sample, if available. Otherwise, based on year of receipt at reference laboratory.

2. CCDC (Chinese Center for Disease Control and Prevention, China); IESR (Institute of Environmental Science and Research, New Zealand); IMR (Institute of Medical Research, Malaysia); NIID (National Institute of Infectious Diseases, Japan); PHI (Public Health Institute, Mongolia); PHLC (Public Health Laboratory Center, Hong Kong); SGH (Singapore General Hospital); VIDRL (Victorian Infectious Diseases Reference Laboratory, Australia)

Table 4. Vaccine-derived poliovirus, 2000–2013

Country	2000	2001	2002	2003	2004	2005	2006	2007	2008	2009	2010	2011	2012	2013
Cambodia						cVDPV3 (1 case)	cVDPV3 (1 case)							
China	aVDPV1 (1 case)	iVDPV1 (1 case) aVDPV3 (1 case)	aVDPV1 (1 case) aVDPV3 (1 case)		cVDPV1 (2 cases) ?VDPV1 (4 cases) ?VDPV2 (1 case)	iVDPV2 (1 case)	aVDPV1 (1 case) ?VDPV1 (7 cases) VDPV3 (1 case)	aVDPV1 (3 cases) ?VDPV1 (1 case)		aVDPV2 (1 case)	aVDPV2 (5 cases) aVDPV3 (2 cases)	aVDPV1 (1 case) aVDPV2 (3 cases) cVDPV2 (2 cases) iVDPV2 (2 cases) iVDPV3 (1 case)	aVDPV1 (1 case) aVDPV2 (2 cases) cVDPV2 (3 cases) iVDPV2 + iVDPV3 (1 case)	aVDPV2 (1 case) iVDPV2 + iVDPV3 (1 case)
Hong Kong (China)						?VDPV? (3 cases)								
Japan					?VDPV? (1 case)	?VDPV3 (1 case)								
Lao People's Democratic Republic					aVDPV2 (1 case) ?VDPV? (2 cases)									
Mongolia				?VDPV? (1 case)										
Philippines		cVDPV1 (3 cases)												
Viet Nam													aVDPV2 (2 cases)	