

HIGHLIGHTS

WHO South-East Asia Region certified polio-free

WHO South-East Asia Region was certified polio-free today by its Polio Regional Certification Commission, an independent commission, under the WHO certification process. This is the fourth of six WHO Regions to be certified, marking an important step towards global polio eradication. With this step, 80% of the world's population now lives in certified polio-free regions.

An independent panel of 11 experts in public health, epidemiology, virology, clinical medicine and related specialties constituting the South-East Asia Regional Certification Commission for Polio Eradication (SEA-RCCPE) met for two days to review evidence from countries before reaching the decision that all countries of the Region are now polio-free and have met the requirements for certification. The 11 member States certified are Bangladesh, Bhutan, Democratic People's Republic of Korea, India, Indonesia, Maldives, Myanmar, Nepal, Sri Lanka, Thailand and Timor-Leste.

Before a Region can be certified polio-free, several conditions must be satisfied such as: at least three years of zero confirmed cases due to indigenous wild poliovirus; excellent laboratory-based surveillance for poliovirus; demonstrated capacity to detect, report, and respond to imported cases of poliomyelitis; and assurance of safe containment of polioviruses in laboratories (introduced since 2000).

The certificate was presented by the WHO Regional Director for SEARO to the Chair of the Regional Certification Commission. This formal process for the certification of global polio eradication was set up based on the experience gained during smallpox eradication. In 1995, the WHO Director-General established the Global Certification Commission for Polio Eradication. As no single country can be certified as polio-free; a WHO Region is certified as a whole after all its countries sustain no new transmissions for 3 years.

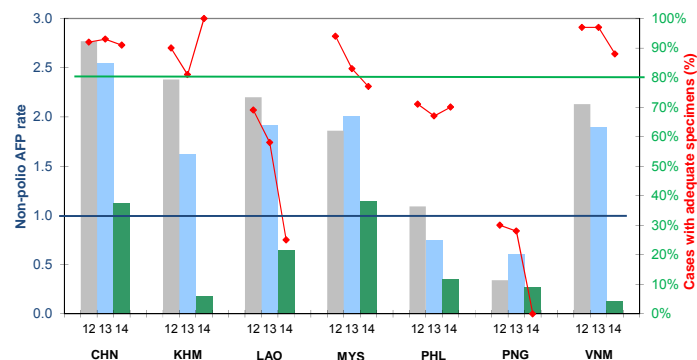


Photo credit: <http://www.searo.who.int/entity/campaigns/polio-certification>

CONTACT US

Expanded Programme on Immunization
Regional Office for the Western Pacific
World Health Organization
P.O. Box 2932, 1000 Manila, Philippines
Phone: +63 2 5288001
Fax: +63 2 5211036, 5260279
Email: WPR_EPIdata@wpro.who.int
Web: www.wpro.who.int/immunization

Chart 1. Non-polio AFP rate and adequate specimen collection rate, 2012–2014*



* AFP rate annualized as of week 13

Chart 2. Percent cases with pending classification > 90 days after onset, 2013

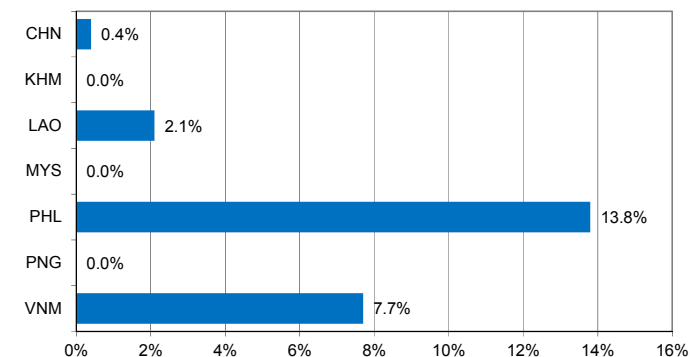


Chart 3. Polio immunization status of reported AFP cases, 2013

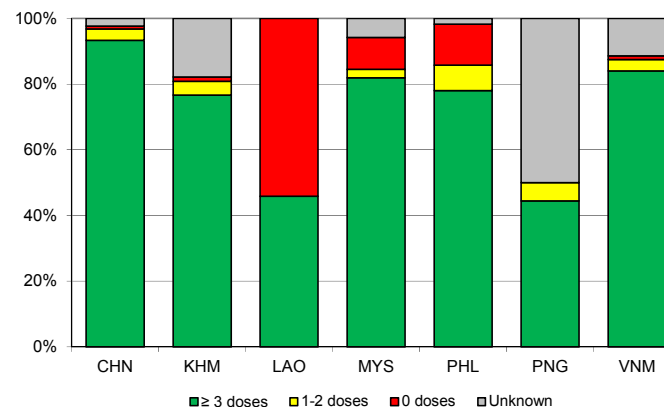
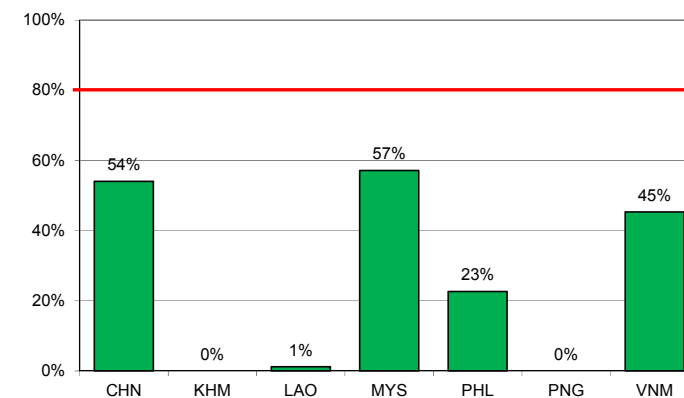


Chart 4. Percentage of samples received at the lab ≤ 3 days of collection, 2013



Note: Priority countries were selected for the charts. Official WHO acronyms have been used for abbreviation: CHN (China), KHM (Cambodia), LAO (Lao People's Democratic Republic), MYS (Malaysia), PHL (Philippines), PNG (Papua New Guinea), and VNM (Viet Nam).

Table 1A. Classification of AFP cases with onset in 2013 and key surveillance indicators

	2012		2013													
	Total reported cases	Annual expected cases <15 years of age	Total reported cases	Classification						Indicators					Latest report date ⁶	Days since last report ⁷
				Confirmed wild poliovirus	Vaccine-derived poliovirus (VDPV)	Polio-compatible	Discarded (Non-polio)	Pending		Non-polio AFP rate	% with adequate specimens ²	% with any specimen ³	% investigated ≤ 2 days of notification ⁴	% with 60-day follow-up ⁵		
								Total	> 90 days ¹ # (%)							
≥ 1	≥ 80%		≥ 80%	≥ 80%												
Australia	56	43	60	0	0	0	60	0	0 (0.0%)	1.40	40%	72%	100%	0%	03-Mar-14	-
Brunei Darussalam	1	1	1	0	0	0	1	0	0 (0.0%)	1.00	100%	100%	100%	-	06-Feb-14	-
Cambodia	107	45	73	0	0	0	73	0	0 (0.0%)	1.62	81%	96%	78%	100%	13-Mar-14	-
China	6173	2225	5648	0	0	1	5612	35	25 (0.4%)	2.54	93%	99%	100%	97%	26-Mar-14	6
Hong Kong (China)	14	8	12	0	0	0	12	0	0 (0.0%)	1.50	100%	100%	100%	-	06-Feb-14	-
Japan	0	167	0	-	-	-	-	-	-	-	-	-	-	-	-	-
Lao People's Democratic Republic	55	25	48	0	0	0	41	7	1 (2.1%)	1.92	58%	90%	98%	75%	28-Jan-14	63
Macao (China)	0	1	1	0	0	0	1	0	0 (0.0%)	1.00	100%	100%	100%	-	14-Jan-14	-
Malaysia	141	77	155	0	0	0	155	0	0 (0.0%)	2.01	83%	100%	85%	100%	31-Mar-14	-
Mongolia	9	7	7	0	0	0	7	0	0 (0.0%)	1.00	86%	100%	100%	100%	07-Mar-14	-
New Zealand	8	9	12	0	0	0	12	0	0 (0.0%)	1.33	50%	83%	83%	100%	27-Feb-14	-
Papua New Guinea	10	30	18	0	0	0	18	0	0 (0.0%)	0.60	28%	83%	83%	100%	26-Feb-14	-
Philippines	403	378	282	0	0	2	235	45	39 (13.8%)	0.75	67%	95%	98%	47%	10-Mar-14	22
Republic of Korea	95	76	84	0	0	0	84	0	0 (0.0%)	1.11	93%	100%	94%	100%	20-Mar-14	-
Singapore	10	6	7	0	0	0	7	0	0 (0.0%)	1.17	71%	100%	86%	100%	08-Jan-14	-
Viet Nam	514	241	456	0	0	0	377	79	35 (7.7%)	1.89	97%	99%	92%	67%	05-Mar-14	27
Pacific island countries	4	10	8	0	0	0	4	4	4 (50.0%)	0.80	63%	100%	100%	0%	18-Mar-14	14
Total	7600	3349	6872	0	0	3	6699	170	104 (1.5%)	2.05	91%	99%	98%	83%		

1. Number (%) of reported cases pending classification more than 90 days from date of onset of paralysis to date of last report
2. Percentage of reported cases with two stool specimens collected 24 hours apart and within 14 days of onset of paralysis
3. Percentage of reported cases with at least one specimen
4. Percentage of reported cases investigated within two days of notification
5. Percentage of reported cases with inadequate specimens followed-up within 60 days of onset of paralysis
6. Report date is fixed as soon as all cases for the year have been classified
7. Countries are expected to submit data at least once per month to WPRO

Green	Reached or surpassed target
Yellow	Nearly reached target: 0.5–0.99 for non-polio AFP rate; 60–79% for other indicators
Red	Substantially below target

Table 1B. Classification of AFP cases with onset in 2014 and key surveillance indicators

	2013		2014													
	Total reported cases	Annual expected cases <15 years of age	Total reported cases	Classification						Indicators					Latest report date	Days since last report ⁷
				Confirmed wild poliovirus	Vaccine-derived poliovirus (VDPV)	Polio-compatible	Discarded (Non-polio)	Pending		Non-polio AFP rate ²	% with adequate specimens ³	% with any specimen ⁴	% investigated ≤ 2 days of notification ⁵	% with 60-day follow-up ⁶		
								Total	> 90 days ¹ # (%)							
≥ 1	≥ 80%		≥ 80%	≥ 80%												
Australia	60	44	5	0	0	0	2	3	0 (0.0%)	0.45	40%	60%	80%	0%	04-Mar-14	28
Brunei Darussalam	1	1	0	-	-	-	-	-	-	-	-	-	-	-	06-Feb-14	54
Cambodia	73	45	2	0	0	0	0	2	0 (0.0%)	0.18	100%	100%	100%	-	05-Feb-14	55
China	5648	2225	621	0	0	0	100	521	0 (0.0%)	1.12	91%	98%	100%	43%	26-Mar-14	6
Hong Kong (China)	12	8	4	0	0	0	3	1	0 (0.0%)	2.00	75%	100%	100%	0%	06-Mar-14	26
Japan	0	167	0	-	-	-	-	-	-	-	-	-	-	-	-	-
Lao People's Democratic Republic	48	25	4	0	0	0	0	4	0 (0.0%)	0.64	25%	100%	100%	0%	12-Mar-14	20
Macao (China)	1	1	0	-	-	-	-	-	-	-	-	-	-	-	12-Mar-14	20
Malaysia	155	77	22	0	0	0	14	8	1 (4.5%)	1.14	77%	100%	50%	0%	23-Mar-14	9
Mongolia	7	8	1	0	0	0	1	0	0 (0.0%)	0.50	100%	100%	100%	-	07-Mar-14	25
New Zealand	12	9	1	0	0	0	0	1	0 (0.0%)	0.44	100%	100%	100%	-	04-Mar-14	28
Papua New Guinea	18	30	2	0	0	0	0	2	0 (0.0%)	0.27	0%	100%	0%	0%	10-Mar-14	22
Philippines	282	378	33	0	0	0	1	32	0 (0.0%)	0.35	70%	97%	94%	10%	10-Mar-14	22
Republic of Korea	84	76	15	0	0	0	5	10	1 (6.7%)	0.79	80%	100%	73%	67%	20-Mar-14	12
Singapore	7	6	2	0	0	0	2	0	0 (0.0%)	1.33	50%	100%	100%	100%	07-Mar-14	25
Viet Nam	456	241	8	0	0	0	0	8	0 (0.0%)	0.13	88%	100%	88%	0%	05-Mar-14	27
Pacific island countries	8	10	2	0	0	0	0	2	0 (0.0%)	0.80	50%	100%	100%	0%	18-Mar-14	14
Total	6872	3351	722	0	0	0	128	594	2 (0.3%)	0.86	88%	98%	97%	33%		

1. Number (%) of reported cases pending classification more than 90 days from date of onset of paralysis to date of last report
2. Annualized non-polio AFP rate per 100 000 population under 15 years of age
3. Percentage of reported cases with two stool specimens collected 24 hours apart and within 14 days of onset of paralysis
4. Percentage of reported cases with at least one specimen
5. Percentage of reported cases investigated within two days of notification
6. Percentage of reported cases with inadequate specimens followed-up within 60 days of onset of paralysis
7. Countries are expected to submit data at least once per month to WPRO

Green	Reached or surpassed target
Yellow	Nearly reached target: 0.5–0.99 for non-polio AFP rate; 60–79% for other indicators
Red	Substantially below target

Table 2A. Laboratory investigation of AFP cases with onset in 2013 and key laboratory indicators

Country	National polio laboratory	Total no. of AFP cases with specimens	Virus isolation results							% results reported \leq 14 days ²	% specimens positive for NPEV	Latest report date	Intratyptic differentiation / Sequencing lab ¹	No. of isolates referred	Intratyptic differentiation (ITD) results									NPEV ³	Pending ITD	Discordant pending sequencing	% ITD results reported \leq 7 days of receipt \geq 80%		
			L20B positive	L20B positive + NPEV	NPEV only	Negative	Pending \leq 14 days	Pending $>$ 14 days	Type 1						Type 2			Type 3											
									Wild						Sabin	VDPV	Wild	Sabin	VDPV	Wild	Sabin	VDPV							
Australia	VIDRL	44	0	0	9	35	0	0	100%	20%	29-Jan-14	VIDRL	0	-	-	-	-	-	-	-	-	-	-	-	-	-	-	-	-
Brunei Darussalam	VIDRL	1	0	0	0	1	0	0	100%	0%	29-Jan-14	VIDRL	0	-	-	-	-	-	-	-	-	-	-	-	-	-	-	-	-
Papua New Guinea	VIDRL	18	0	0	3	15	0	0	100%	16%	29-Jan-14	VIDRL	0	-	-	-	-	-	-	-	-	-	-	-	-	-	-	-	-
Pacific island countries	VIDRL	8	0	0	4	4	0	0	100%	44%	29-Jan-14	VIDRL	0	-	-	-	-	-	-	-	-	-	-	-	-	-	-	-	-
Japan	NIID	0	-	-	-	-	-	-	-	-	-	NIID	0	-	-	-	-	-	-	-	-	-	-	-	-	-	-	-	-
Cambodia	NIID	70	1	0	21	48	0	0	94%	24%	12-Feb-14	NIID	2	0	0	0	0	2	0	0	0	0	0	0	0	0	0	0	100%
Lao People's Democratic Republic	NIID	43	1	0	9	33	0	0	97%	19%	19-Feb-14	NIID	2	0	0	0	0	1	0	0	0	0	0	0	0	0	1	100%	
Malaysia	IMR	156	0	0	7	149	0	0	98%	3%	25-Feb-14	IMR	0	-	-	-	-	-	-	-	-	-	-	-	-	-	-	-	-
Mongolia	PHI	7	0	0	1	6	0	0	100%	14%	11-Feb-14	NIID	0	-	-	-	-	-	-	-	-	-	-	-	-	-	-	-	-
New Zealand	IESR	9	0	0	2	7	0	0	94%	22%	17-Mar-14	IESR	0	-	-	-	-	-	-	-	-	-	-	-	-	-	-	-	-
Philippines	RITM	365	0	1	39	325	0	0	95%	9%	18-Mar-14	VIDRL	3	0	1	0	0	1	0	0	1	0	0	0	0	0	0	0	100%
Republic of Korea	NIH	83	0	0	2	81	0	0	100%	3%	18-Feb-14	NIID	0	-	-	-	-	-	-	-	-	-	-	-	-	-	-	-	-
Singapore	SGH	7	1	0	0	6	0	0	100%	0%	15-Jan-14	SGH	2	0	0	0	0	2	0	0	0	0	0	0	0	0	0	0	100%
Viet Nam, North	NIHE	229	2	0	41	186	0	0	95%	15%	11-Feb-14	NIID	4	0	0	0	0	2	0	0	2	0	0	0	0	0	0	0	100%
Viet Nam, South	PI	225	2	0	21	208	0	0	98%	9%	18-Mar-14	NIID	4	0	2	0	0	0	0	0	2	0	0	0	0	0	0	0	100%
China	CCDC	5595	99	3	584	4889	0	20	60%	9%	26-Mar-14		298	0	86	0	0	106	3	0	92	11	0	0	0	0	0	0	100%
China, Anhui	Prov. Lab	266	4	0	35	227	0	0	52%	11%		Prov. Lab	12	0	3	0	0	4	0	0	5	0	0	0	0	0	0	0	100%
China, Beijing	Prov. Lab	31	0	0	0	30	0	1	77%	0%		Prov. Lab	15	0	6	0	0	6	0	0	3	0	0	0	0	0	0	0	100%
China, Fujian	Prov. Lab	161	4	0	16	141	0	0	80%	7%		Prov. Lab	8	0	2	0	0	3	0	0	3	0	0	0	0	0	0	0	100%
China, Gansu	Prov. Lab	112	4	0	6	101	0	1	73%	5%		Prov. Lab	27	0	8	0	0	10	0	0	9	0	0	0	0	0	0	0	100%
China, Guangdong	Prov. Lab	377	2	0	37	338	0	0	60%	8%		Prov. Lab	11	0	4	0	0	4	1	0	2	0	0	0	0	0	0	0	100%
China, Guangxi	Prov. Lab	250	4	0	29	216	0	1	20%	10%		Prov. Lab	13	0	3	0	0	4	0	0	6	0	0	0	0	0	0	0	100%
China, Hebei	Prov. Lab	387	12	2	62	311	0	0	64%	13%		Prov. Lab	20	0	11	0	0	3	0	0	6	0	0	0	0	0	0	0	100%
China, Heilongjiang	Prov. Lab	128	3	0	7	118	0	0	79%	5%		Prov. Lab	6	0	1	0	0	0	0	0	5	0	0	0	0	0	0	0	100%
China, Henan	Prov. Lab	580	13	0	103	464	0	0	55%	14%		Prov. Lab	27	0	6	0	0	14	0	0	7	0	0	0	0	0	0	0	100%
China, Hunan	Prov. Lab	298	2	0	41	250	0	5	90%	13%		Prov. Lab	4	0	0	0	0	2	0	0	2	0	0	0	0	0	0	0	100%
China, Jiangsu	Prov. Lab	289	9	0	7	273	0	0	43%	2%		Prov. Lab	11	0	9	0	0	1	0	0	1	0	0	0	0	0	0	0	100%
China, Jiangxi	Prov. Lab	190	2	0	14	174	0	0	70%	7%		Prov. Lab	30	0	0	0	0	12	2	0	5	11	0	0	0	0	0	0	100%
China, Jilin	Prov. Lab	64	0	0	3	61	0	0	61%	5%		Prov. Lab	0	-	-	-	-	-	-	-	-	-	-	-	-	-	-	-	-
China, Shaanxi	Prov. Lab	110	1	0	2	107	0	0	91%	2%		Prov. Lab	0	-	-	-	-	-	-	-	-	-	-	-	-	-	-	-	-
China, Shandong	Prov. Lab	390	17	0	29	343	0	1	69%	5%		Prov. Lab	35	0	11	0	0	12	0	0	12	0	0	0	0	0	0	0	100%
China, Shanghai	Prov. Lab	28	2	0	0	26	0	0	98%	0%		Prov. Lab	12	0	5	0	0	6	0	0	1	0	0	0	0	0	0	0	100%
China, Shanxi	Prov. Lab	212	3	0	9	200	0	0	42%	4%		Prov. Lab	6	0	2	0	0	2	0	0	2	0	0	0	0	0	0	0	100%
China, Sichuan	Prov. Lab	357	0	0	39	312	0	6	32%	10%		Prov. Lab	2	0	1	0	0	0	0	0	1	0	0	0	0	0	0	0	100%
China, Tianjin	Prov. Lab	23	1	0	1	21	0	0	87%	4%		Prov. Lab	4	0	1	0	0	4	2	0	0	1	0	0	0	0	0	0	100%
China, Xinjiang	Prov. Lab	86	5	0	6	75	0	0	81%	6%		Prov. Lab	14	0	2	0	0	9	0	0	3	0	0	0	0	0	0	0	100%
China, Yunnan	Prov. Lab	262	2	1	30	228	0	1	74%	10%		Prov. Lab	5	0	1	0	0	0	0	0	4	0	0	0	0	0	0	0	100%
China, Zhejiang	Prov. Lab	163	3	0	19	141	0	0	37%	9%		Prov. Lab	7	0	1	0	0	2	0	0	4	0	0	0	0	0	0	0	100%
China, Chongqing	Prov. Lab	81	0	0	8	72	0	1	77%	9%		CCDC	0	-	-	-	-	-	-	-	-	-	-	-	-	-	-	-	-
China, Guizhou	Prov. Lab	232	0	0	24	208	0	0	74%	10%		CCDC	2	0	0	0	0	2	0	0	0	0	0	0	0	0	0	0	100%
China, Hainan	Prov. Lab	44	0	0	5	39	0	0	68%	10%		CCDC	2	0	0	0	0	1	0	0	1	0	0	0	0	0	0	0	100%
China, Hubei	Prov. Lab	230	3	0	31	196	0	0	41%	13%		CCDC	6	0	3	0	0	1	0	0	2	0	0	0	0	0	0	0	100%
China, Liaoning	Prov. Lab	112	0	0	14	96	0	2	73%	11%		CCDC	7	0	3	0	0	2	0	0	2	0	0	0	0	0	0	0	100%
China, Neimongol	Prov. Lab	80	3	0	3	74	0	0	67%	4%		CCDC	6	0	0	0	0	1	0	0	5	0	0	0	0	0	0	0	100%
China, Ningxia	Prov. Lab	26	0	0	3	22	0	1	54%	10%		CCDC	6	0	3	0	0	3	0	0	0	0	0	0	0	0	0	0	100%
China, Qinghai	Prov. Lab	16	0	0	1	15	0	0	63%	3%		CCDC	0	-	-	-	-	-	-	-	-	-	-	-	-	-	-	-	-
China, Tibet	Prov. Lab	10	0	0	0	10	0	0	20%	0%		CCDC	0	-	-	-	-	-	-	-	-	-	-	-	-	-	-	-	-
Hong Kong (China)	PHLC	12	0	0	0	12	0	0	97%	0%	16-Jan-14	PHLC	0	-	-	-	-	-	-	-	-	-	-	-	-	-	-	-	-
Macao (China)	PHLC	0	-	-	-	-	-	-	-	-	16-Jan-14	PHLC	0	-	-	-	-	-	-	-	-	-	-	-	-	-	-	-	-
Total		6872	106	4	743	6005	0	20	65%	9%			315	0	89	0	0	114	3	0	97	11	0	0	1	0	100%		

1. IESR (Institute of Environmental Science and Research, New Zealand); IMR (Institute of Medical Research, Malaysia); NIH (National Institute of Health, Republic of Korea); NIHE (National Institute of Hygiene and Epidemiology, Ha Noi, Viet Nam); NIID (National Institute of Infectious Diseases, Japan); PHI (Public Health Institute, Mongolia); PHLC (Public Health Laboratory Center, Hong Kong); PI (Pasteur Institute, Ho Chi Minh, Viet Nam); RITM (Research Institute for Tropical Medicine, Philippines); SGH (Singapore General Hospital); VIDRL (Victorian Infectious Diseases Reference Laboratory, Australia)

2. The target of 14 days for the timeliness of virus isolation will be used for all polio laboratories

3. NPEV growing in L20B cells

4. Twenty-two provincial laboratories in China perform ITD from 2013

Table 2B. Laboratory investigation of AFP cases with onset in 2014 and key laboratory indicators

Country	National polio laboratory	Total no. of AFP cases with specimens	Virus isolation results							% specimens positive for NPEV	Latest report date	Intratyptic differentiation / Sequencing lab ¹	No. of isolates referred	Intratyptic differentiation (ITD) results																
			L20B positive	L20B positive + NPEV	NPEV only	Negative	Pending ≤ 14 days	Pending > 14 days	% results reported ≤ 14 days ²					Type 1			Type 2			Type 3			NPEV ³	Pending ITD	Discordant pending sequencing	% ITD results reported ≤ 7 days of receipt ≥ 80%				
														Wild	Sabin	VDPV	Wild	Sabin	VDPV	Wild	Sabin	VDPV								
Australia	VIDRL	4	0	0	0	4	0	0	88%	0%	14-Mar-14	VIDRL	0	-	-	-	-	-	-	-	-	-	-	-	-	-	-	-		
Brunei Darussalam	VIDRL	0	-	-	-	-	-	-	-	-	14-Mar-14	VIDRL	0	-	-	-	-	-	-	-	-	-	-	-	-	-	-	-	-	
Papua New Guinea	VIDRL	0	-	-	-	-	-	-	-	-	14-Mar-14	VIDRL	0	-	-	-	-	-	-	-	-	-	-	-	-	-	-	-	-	
Pacific island countries	VIDRL	2	0	0	0	1	1	0	100%	0%	14-Mar-14	VIDRL	0	-	-	-	-	-	-	-	-	-	-	-	-	-	-	-	-	
Japan	NIID	0	-	-	-	-	-	-	-	-	-	NIID	0	-	-	-	-	-	-	-	-	-	-	-	-	-	-	-	-	
Cambodia	NIID	5	2	0	0	3	0	0	100%	0%	31-Mar-14	NIID	4	0	0	0	0	4	0	0	0	0	0	0	0	0	0	0	100%	
Lao People's Democratic Republic	NIID	3	0	0	0	3	0	0	100%	0%	17-Mar-14	NIID	0	-	-	-	-	-	-	-	-	-	-	-	-	-	-	-	-	
Malaysia	IMR	20	0	0	0	15	5	0	100%	0%	11-Mar-14	IMR	0	-	-	-	-	-	-	-	-	-	-	-	-	-	-	-	-	
Mongolia	PHI	1	0	0	0	1	0	0	100%	0%	07-Mar-14	NIID	0	-	-	-	-	-	-	-	-	-	-	-	-	-	-	-	-	
New Zealand	IESR	2	0	0	1	0	1	0	100%	67%	17-Mar-14	IESR	0	-	-	-	-	-	-	-	-	-	-	-	-	-	-	-	-	
Philippines	RITM	46	0	0	1	41	0	4	90%	1%	19-Mar-14	VIDRL	0	-	-	-	-	-	-	-	-	-	-	-	-	-	-	-	-	
Republic of Korea	NIH	15	0	0	0	12	2	1	100%	0%	20-Mar-14	NIID	0	-	-	-	-	-	-	-	-	-	-	-	-	-	-	-	-	
Singapore	SGH	2	0	0	0	2	0	0	100%	0%	14-Mar-14	SGH	0	-	-	-	-	-	-	-	-	-	-	-	-	-	-	-	-	
Viet Nam, North	NIHE	9	0	0	1	4	4	0	100%	20%	10-Mar-14	NIID	0	-	-	-	-	-	-	-	-	-	-	-	-	-	-	-	-	
Viet Nam, South	PI	13	0	0	1	9	0	3	80%	5%	03-Mar-14	NIID	0	-	-	-	-	-	-	-	-	-	-	-	-	-	-	-	-	
China	CCDC	606	5	1	24	536	0	40	57%	3%	26-Mar-14		15	0	6	0	0	2	0	0	2	0	0	5	0	0	0	100%		
China, Anhui	Prov. Lab	31	1	0	0	30	0	0	48%	0%		Prov. Lab	2	0	0	0	0	0	0	0	0	0	0	2	0	0	0	-		
China, Beijing	Prov. Lab	3	0	0	0	3	0	0	100%	0%		Prov. Lab	2	0	2	0	0	0	0	0	0	0	0	0	0	0	0	0	100%	
China, Fujian	Prov. Lab	23	0	0	1	22	0	0	83%	4%		Prov. Lab	0	-	-	-	-	-	-	-	-	-	-	-	-	-	-	-	-	
China, Gansu	Prov. Lab	11	0	0	0	11	0	0	86%	0%		Prov. Lab	0	-	-	-	-	-	-	-	-	-	-	-	-	-	-	-	-	
China, Guangdong	Prov. Lab	39	1	0	1	37	0	0	67%	1%		Prov. Lab	4	0	2	0	0	2	0	0	0	0	0	0	0	0	0	100%		
China, Guangxi	Prov. Lab	24	0	0	1	22	0	1	9%	4%		Prov. Lab	0	-	-	-	-	-	-	-	-	-	-	-	-	-	-	-	-	
China, Hebei	Prov. Lab	35	0	1	4	29	0	1	60%	9%		Prov. Lab	2	0	2	0	0	0	0	0	0	0	0	0	0	0	0	100%		
China, Heilongjiang	Prov. Lab	9	0	0	0	9	0	0	89%	0%		Prov. Lab	0	-	-	-	-	-	-	-	-	-	-	-	-	-	-	-	-	
China, Henan	Prov. Lab	56	0	0	4	50	0	2	64%	6%		Prov. Lab	0	-	-	-	-	-	-	-	-	-	-	-	-	-	-	-	-	
China, Hunan	Prov. Lab	29	1	0	0	26	0	2	78%	0%		Prov. Lab	0	-	-	-	-	-	-	-	-	-	-	-	-	-	-	-	-	
China, Jiangsu	Prov. Lab	30	0	0	0	13	0	17	69%	0%		Prov. Lab	0	-	-	-	-	-	-	-	-	-	-	-	-	-	-	-	-	
China, Jiangxi	Prov. Lab	18	0	0	0	17	0	1	71%	0%		Prov. Lab	0	-	-	-	-	-	-	-	-	-	-	-	-	-	-	-	-	
China, Jilin	Prov. Lab	10	0	0	0	9	0	1	67%	0%		Prov. Lab	0	-	-	-	-	-	-	-	-	-	-	-	-	-	-	-	-	
China, Shaanxi	Prov. Lab	8	0	0	0	5	0	3	100%	0%		Prov. Lab	0	-	-	-	-	-	-	-	-	-	-	-	-	-	-	-	-	
China, Shandong	Prov. Lab	64	0	0	3	60	0	1	57%	4%		Prov. Lab	0	-	-	-	-	-	-	-	-	-	-	-	-	-	-	-	-	
China, Shanghai	Prov. Lab	5	0	0	0	5	0	0	100%	0%		Prov. Lab	0	-	-	-	-	-	-	-	-	-	-	-	-	-	-	-	-	
China, Shanxi	Prov. Lab	33	1	0	0	31	0	1	17%	0%		Prov. Lab	0	-	-	-	-	-	-	-	-	-	-	-	-	-	-	-	-	
China, Sichuan	Prov. Lab	34	1	0	3	29	0	1	21%	8%		Prov. Lab	2	0	0	0	0	0	0	0	0	0	0	2	0	0	0	-	-	
China, Tianjin	Prov. Lab	6	0	0	1	5	0	0	100%	17%		Prov. Lab	0	-	-	-	-	-	-	-	-	-	-	-	-	-	-	-	-	
China, Xinjiang	Prov. Lab	5	0	0	0	5	0	0	100%	0%		Prov. Lab	0	-	-	-	-	-	-	-	-	-	-	-	-	-	-	-	-	
China, Yunnan	Prov. Lab	26	0	0	1	23	0	2	33%	2%		Prov. Lab	1	0	0	0	0	0	0	0	0	0	0	1	0	0	0	-	-	
China, Zhejiang	Prov. Lab	19	0	0	0	18	0	1	44%	0%		Prov. Lab	0	-	-	-	-	-	-	-	-	-	-	-	-	-	-	-	-	
China, Chongqing	Prov. Lab	13	0	0	1	12	0	0	65%	4%		CCDC	0	-	-	-	-	-	-	-	-	-	-	-	-	-	-	-	-	
China, Guizhou	Prov. Lab	23	0	0	2	20	0	1	59%	7%		CCDC	0	-	-	-	-	-	-	-	-	-	-	-	-	-	-	-	-	
China, Hainan	Prov. Lab	2	0	0	0	2	0	0	100%	0%		CCDC	0	-	-	-	-	-	-	-	-	-	-	-	-	-	-	-	-	
China, Hubei	Prov. Lab	19	0	0	2	16	0	1	35%	11%		CCDC	0	-	-	-	-	-	-	-	-	-	-	-	-	-	-	-	-	
China, Liaoning	Prov. Lab	15	0	0	0	13	0	2	92%	0%		CCDC	2	0	0	0	0	0	0	0	2	0	0	0	0	0	100%			
China, Neimongol	Prov. Lab	6	0	0	0	5	0	1	100%	0%		CCDC	0	-	-	-	-	-	-	-	-	-	-	-	-	-	-	-	-	
China, Ningxia	Prov. Lab	5	0	0	0	5	0	0	70%	0%		CCDC	0	-	-	-	-	-	-	-	-	-	-	-	-	-	-	-	-	
China, Qinghai	Prov. Lab	4	0	0	0	4	0	0	100%	0%		CCDC	0	-	-	-	-	-	-	-	-	-	-	-	-	-	-	-	-	
China, Tibet	Prov. Lab	1	0	0	0	0	0	1	-	-		CCDC	0	-	-	-	-	-	-	-	-	-	-	-	-	-	-	-	-	
Hong Kong (China)	PHLC	2	0	0	0	1	1	0	75%	0%	20-Feb-14	PHLC	0	-	-	-	-	-	-	-	-	-	-	-	-	-	-	-	-	
Macao (China)	PHLC	0	-	-	-	-	-	-	-	-	20-Feb-14	PHLC	0	-	-	-	-	-	-	-	-	-	-	-	-	-	-	-	-	-
Total		730	7	1	28	632	14	48	61%	3%			19	0	6	0	0	6	0	0	2	0	0	5	0	0	100%			

1. IESR (Institute of Environmental Science and Research, New Zealand); IMR (Institute of Medical Research, Malaysia); NIH (National Institute of Health, Republic of Korea); NIHE (National Institute of Hygiene and Epidemiology, Ha Noi, Viet Nam); NIID (National Institute of Infectious Diseases, Japan); PHI (Public Health Institute, Mongolia); PHLC (Public Health Laboratory Center, Hong Kong); PI (Pasteur Institute, Ho Chi Minh, Viet Nam); RITM (Research Institute for Tropical Medicine, Philippines); SGH (Singapore General Hospital); VIDRL (Victorian Infectious Diseases Reference Laboratory, Australia)

2. The target of 14 days for the timeliness of virus isolation will be used for all polio laboratories

3. NPEV growing in L20B cells

4. Twenty-two provincial laboratories in China perform ITD from 2013

Table 3A. Laboratory confirmation of polio isolates from other sources in 2013 ¹

Country	Intratyptic differentiation lab. ²	Non-AFP cases													Environmental samples																					
		Total number of non-AFP cases tested for polio	Total number of non-AFP cases with polio isolates	Type 1			Type 2			Type 3			NPEV grown in L20B	Pending ITD	Discordant pending sequencing	Total number of samples processed	Total number of samples with polio isolates	Type 1			Type 2			Type 3			NPEV grown in L20B	Pending ITD	Discordant pending sequencing							
				Wild	Sabin	VDPV	Wild	Sabin	VDPV	Wild	Sabin	VDPV						Wild	Sabin	VDPV	Wild	Sabin	VDPV	Wild	Sabin	VDPV										
Australia	VIDRL	269	1	0	0	0	0	1	0	0	0	0	0	0	0	0	0	-	-	-	-	-	-	-	-	-	-	-	-	-	-	-	-	-	-	-
Japan	NIID	0	-	-	-	-	-	-	-	-	-	-	-	-	-	-	-	0	-	-	-	-	-	-	-	-	-	-	-	-	-	-	-	-	-	
Malaysia	IMR	0	-	-	-	-	-	-	-	-	-	-	-	-	-	-	33	4	0	1	0	0	2	0	0	1	0	0	27	0	0	-	-	-		
Mongolia	PHI	158	0	0	0	0	0	0	0	0	0	0	56	0	0	0	-	-	-	-	-	-	-	-	-	-	-	-	-	-	-	-	-	-		
New Zealand	IESR	0	-	-	-	-	-	-	-	-	-	-	-	-	-	-	0	-	-	-	-	-	-	-	-	-	-	-	-	-	-	-	-	-	-	
Philippines	VIDRL	6	6	0	5	0	0	1	0	0	1	0	0	0	0	0	0	-	-	-	-	-	-	-	-	-	-	-	-	-	-	-	-	-	-	
Republic of Korea	NIID	0	-	-	-	-	-	-	-	-	-	-	-	-	-	-	0	-	-	-	-	-	-	-	-	-	-	-	-	-	-	-	-	-	-	
Singapore	SGH	0	-	-	-	-	-	-	-	-	-	-	-	-	-	-	0	-	-	-	-	-	-	-	-	-	-	-	-	-	-	-	-	-	-	
Viet Nam, North	NIID	0	-	-	-	-	-	-	-	-	-	-	-	-	-	-	0	-	-	-	-	-	-	-	-	-	-	-	-	-	-	-	-	-	-	
Viet Nam, South	NIID	0	-	-	-	-	-	-	-	-	-	-	-	-	-	-	0	-	-	-	-	-	-	-	-	-	-	-	-	-	-	-	-	-	-	
China (total)		28	23	0	14	0	0	10	1	0	10	0	1	0	0	0	-	-	-	-	-	-	-	-	-	-	-	-	-	-	-	-	-	-	-	
China, Anhui	Prov. Lab	0	-	-	-	-	-	-	-	-	-	-	-	-	-	-	0	-	-	-	-	-	-	-	-	-	-	-	-	-	-	-	-	-	-	
China, Beijing	Prov. Lab	0	-	-	-	-	-	-	-	-	-	-	-	-	-	-	0	-	-	-	-	-	-	-	-	-	-	-	-	-	-	-	-	-	-	
China, Fujian	Prov. Lab	0	-	-	-	-	-	-	-	-	-	-	-	-	-	-	0	-	-	-	-	-	-	-	-	-	-	-	-	-	-	-	-	-	-	
China, Gansu	Prov. Lab	7	7	0	7	0	0	4	0	0	4	0	0	0	0	0	0	-	-	-	-	-	-	-	-	-	-	-	-	-	-	-	-	-	-	
China, Guangdong	Prov. Lab	4	1	0	0	0	0	0	1	0	0	0	0	0	0	0	0	-	-	-	-	-	-	-	-	-	-	-	-	-	-	-	-	-	-	
China, Guangxi	Prov. Lab	0	-	-	-	-	-	-	-	-	-	-	-	-	-	-	0	-	-	-	-	-	-	-	-	-	-	-	-	-	-	-	-	-	-	
China, Hebei	Prov. Lab	1	1	0	1	0	0	0	0	0	0	0	0	0	0	0	0	-	-	-	-	-	-	-	-	-	-	-	-	-	-	-	-	-	-	
China, Heilongjiang	Prov. Lab	0	-	-	-	-	-	-	-	-	-	-	-	-	-	-	0	-	-	-	-	-	-	-	-	-	-	-	-	-	-	-	-	-	-	
China, Henan	Prov. Lab	0	-	-	-	-	-	-	-	-	-	-	-	-	-	-	0	-	-	-	-	-	-	-	-	-	-	-	-	-	-	-	-	-	-	
China, Hunan	Prov. Lab	0	-	-	-	-	-	-	-	-	-	-	-	-	-	-	0	-	-	-	-	-	-	-	-	-	-	-	-	-	-	-	-	-	-	
China, Jiangsu	Prov. Lab	0	-	-	-	-	-	-	-	-	-	-	-	-	-	-	0	-	-	-	-	-	-	-	-	-	-	-	-	-	-	-	-	-	-	
China, Jiangxi	Prov. Lab	2	2	0	0	0	0	1	0	0	1	0	0	0	0	0	0	-	-	-	-	-	-	-	-	-	-	-	-	-	-	-	-	-	-	
China, Jilin	Prov. Lab	0	-	-	-	-	-	-	-	-	-	-	-	-	-	-	0	-	-	-	-	-	-	-	-	-	-	-	-	-	-	-	-	-	-	
China, Shaanxi	Prov. Lab	0	-	-	-	-	-	-	-	-	-	-	-	-	-	-	0	-	-	-	-	-	-	-	-	-	-	-	-	-	-	-	-	-	-	
China, Shandong	Prov. Lab	2	2	0	2	0	0	1	0	0	1	0	0	0	0	0	0	-	-	-	-	-	-	-	-	-	-	-	-	-	-	-	-	-	-	
China, Shanghai	Prov. Lab	2	2	0	1	0	0	0	0	0	1	0	0	0	0	0	0	-	-	-	-	-	-	-	-	-	-	-	-	-	-	-	-	-	-	
China, Shanxi	Prov. Lab	0	-	-	-	-	-	-	-	-	-	-	-	-	-	-	0	-	-	-	-	-	-	-	-	-	-	-	-	-	-	-	-	-	-	
China, Sichuan	Prov. Lab	2	2	0	1	0	0	0	0	0	1	0	0	0	0	0	0	-	-	-	-	-	-	-	-	-	-	-	-	-	-	-	-	-	-	
China, Tianjin	Prov. Lab	1	1	0	1	0	0	0	0	0	1	0	0	0	0	0	0	-	-	-	-	-	-	-	-	-	-	-	-	-	-	-	-	-	-	
China, Xinjiang	Prov. Lab	2	2	0	0	0	0	2	0	0	0	0	0	0	0	0	0	-	-	-	-	-	-	-	-	-	-	-	-	-	-	-	-	-	-	
China, Yunnan	Prov. Lab	0	-	-	-	-	-	-	-	-	-	-	-	-	-	-	0	-	-	-	-	-	-	-	-	-	-	-	-	-	-	-	-	-	-	
China, Zhejiang	Prov. Lab	0	-	-	-	-	-	-	-	-	-	-	-	-	-	-	0	-	-	-	-	-	-	-	-	-	-	-	-	-	-	-	-	-	-	
China, Chongqing	CCDC	0	-	-	-	-	-	-	-	-	-	-	-	-	-	-	0	-	-	-	-	-	-	-	-	-	-	-	-	-	-	-	-	-	-	
China, Guizhou	CCDC	1	0	0	0	0	0	0	0	0	0	0	1	0	0	0	0	-	-	-	-	-	-	-	-	-	-	-	-	-	-	-	-	-	-	
China, Hainan	CCDC	0	-	-	-	-	-	-	-	-	-	-	-	-	-	-	0	-	-	-	-	-	-	-	-	-	-	-	-	-	-	-	-	-	-	
China, Hubei	CCDC	0	-	-	-	-	-	-	-	-	-	-	-	-	-	-	0	-	-	-	-	-	-	-	-	-	-	-	-	-	-	-	-	-	-	
China, Liaoning	CCDC	0	-	-	-	-	-	-	-	-	-	-	-	-	-	-	0	-	-	-	-	-	-	-	-	-	-	-	-	-	-	-	-	-	-	
China, Neimongol	CCDC	2	2	0	0	0	0	1	0	0	1	0	0	0	0	0	0	-	-	-	-	-	-	-	-	-	-	-	-	-	-	-	-	-	-	
China, Ningxia	CCDC	2	1	0	1	0	0	1	0	0	0	0	0	0	0	0	0	-	-	-	-	-	-	-	-	-	-	-	-	-	-	-	-	-	-	
China, Qinghai	CCDC	0	-	-	-	-	-	-	-	-	-	-	-	-	-	-	0	-	-	-	-	-	-	-	-	-	-	-	-	-	-	-	-	-	-	
China, Tibet	CCDC	0	-	-	-	-	-	-	-	-	-	-	-	-	-	-	0	-	-	-	-	-	-	-	-	-	-	-	-	-	-	-	-	-	-	
Hong Kong (China)	PHLC	1	1	0	1	0	0	0	0	0	0	0	0	0	0	0	0	-	-	-	-	-	-	-	-	-	-	-	-	-	-	-	-	-	-	
Total		462	31	0	20	0	0	12	1	0	11	0	57	0	0	33	4	0	1	0	0	2	0	0	1	0	27	0	0	0	0	0	0	0		

1. Based on year of collection of sample, if available. Otherwise, based on year of receipt at reference laboratory.

2. CCDC (Chinese Center for Disease Control and Prevention, China); IESR (Institute of Environmental Science and Research, New Zealand); IMR (Institute of Medical Research, Malaysia); NIID (National Institute of Infectious Diseases, Japan); PHI (Public Health Institute, Mongolia); PHLC (Public Health Laboratory Center, Hong Kong); SGH (Singapore General Hospital); VIDRL (Victorian Infectious Diseases Reference Laboratory, Australia)

Table 4. Vaccine-derived poliovirus, 2000–2013

Country	2000	2001	2002	2003	2004	2005	2006	2007	2008	2009	2010	2011	2012	2013
Cambodia						cVDPV3 (1 case)	cVDPV3 (1 case)							
China	aVDPV1 (1 case)	iVDPV1 (1 case) aVDPV3 (1 case)	aVDPV1 (1 case) aVDPV3 (1 case)		cVDPV1 (2 cases) ?VDPV1 (4 cases) ?VDPV2 (1 case)	iVDPV2 (1 case)	aVDPV1 (1 case) ?VDPV1 (7 cases) VDPV3 (1 case)	aVDPV1 (3 cases) ?VDPV1 (1 case)		aVDPV2 (1 case)	aVDPV2 (5 cases) aVDPV3 (2 cases)	aVDPV1 (1 case) aVDPV2 (3 cases) cVDPV2 (2 cases) iVDPV2 (2 cases) iVDPV3 (1 case)	aVDPV1 (1 case) aVDPV2 (2 cases) cVDPV2 (3 cases) iVDPV2 + iVDPV3 (1 case)	aVDPV2 (1 case) iVDPV2 + iVDPV3 (1 case)
Hong Kong (China)						?VDPV? (3 cases)								
Japan					?VDPV? (1 case)	?VDPV3 (1 case)								
Lao People's Democratic Republic					aVDPV2 (1 case) ?VDPV? (2 cases)									
Mongolia				?VDPV? (1 case)										
Philippines		cVDPV1 (3 cases)												
Viet Nam													aVDPV2 (2 cases)	