

## HIGHLIGHTS

### Update on Polio Eradication India Meets a Major Milestone

After reporting their last polio case in 11 January 2011, Government of India has celebrated three years without polio case in presence of the President of the country, high dignitaries of the Government and other national key stake holders. The ceremony was as well attended by Dr Margaret Chan, WHO Director-General and Ron D Burton, President of Rotary International, which respective organizations support was recognized as instrumental in this exceptional national achievement.

In late March 2014, the Regional Certification Commission will convey a technical meeting to review each of the eleven Southeast Asian countries' (SEARO) surveillance and laboratory data and consider delivering to the Region its polio-free status certificate.

The South-East Asia will likely be the fourth WHO region to be certified polio-free after Americas (1994); Western Pacific (2000) and European (2002) regions.



Last child with polio in the South East Asia Region  
(photo taken from SEARO presentation in 19th WPR RCC Meeting)

## CONTACT US

Expanded Programme on Immunization  
Regional Office for the Western Pacific  
World Health Organization  
P.O. Box 2932, 1000 Manila, Philippines  
Phone: +63 2 5288001  
Fax: +63 2 5211036, 5260279  
Email: [WPR\\_EPIdata@wpro.who.int](mailto:WPR_EPIdata@wpro.who.int)  
Web: [www.wpro.who.int/immunization](http://www.wpro.who.int/immunization)

Chart 1. Non-polio AFP rate and adequate specimen collection rate, 2011–2013

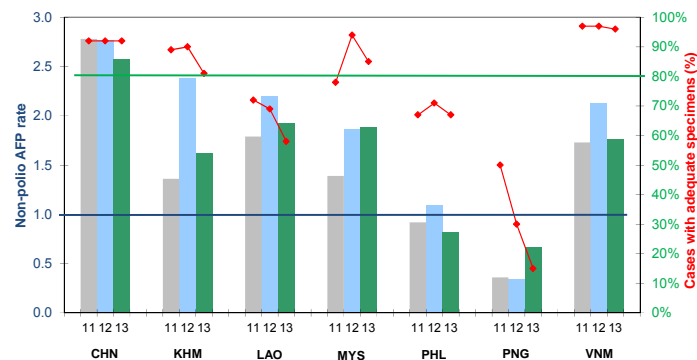


Chart 2. Percent cases with pending classification > 90 days after onset, 2013

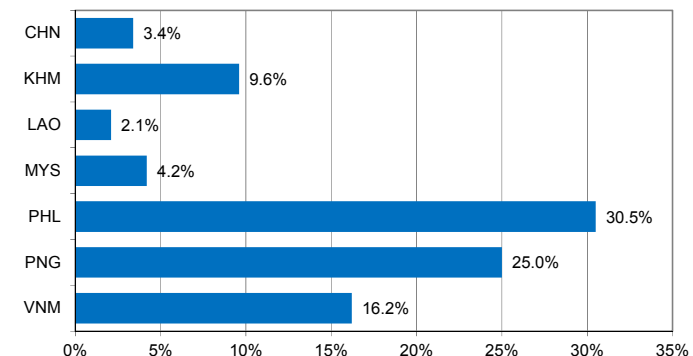


Chart 3. Polio immunization status of reported AFP cases, 2013

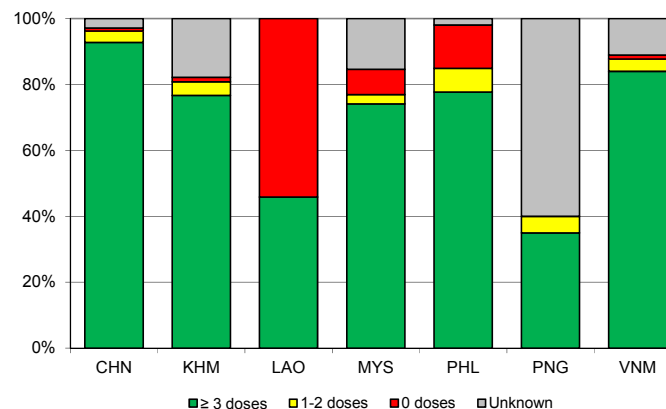
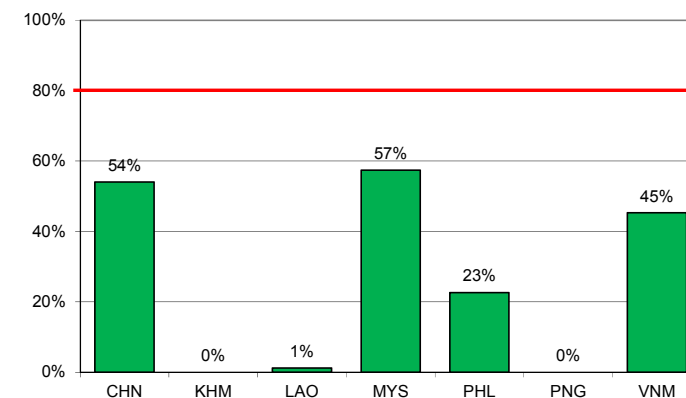


Chart 4. Percentage of samples received at the lab ≤ 3 days of collection, 2013



Note: Priority countries were selected for the charts. Official WHO acronyms have been used for abbreviation: CHN (China), KHM (Cambodia), LAO (Lao People's Democratic Republic), MYS (Malaysia), PHL (Philippines), PNG (Papua New Guinea), and VNM (Viet Nam).

Table 1. Classification of AFP cases with onset in 2013 and key surveillance indicators

	2012		2013													
	Total reported cases	Annual expected cases <15 years of age	Total reported cases	Classification						Indicators					Latest report date	Days since last report <sup>6</sup>
				Confirmed wild poliovirus	Vaccine-derived poliovirus (VDPV)	Polio-compatible	Discarded (Non-polio)	Pending		Non-polio AFP rate	% with adequate specimens <sup>2</sup>	% with any specimen <sup>3</sup>	% investigated ≤ 2 days of notification <sup>4</sup>	% with 60-day follow-up <sup>5</sup>		
								Total	> 90 days <sup>1</sup> # (%)							
≥ 1	≥ 80%		≥ 80%	≥ 80%												
Australia	56	43	48	0	0	0	48	0	0 (0.0%)	1.12	42%	73%	100%	0%	05-Feb-14	12
Brunei Darussalam	1	1	1	0	0	0	1	0	0 (0.0%)	1.00	100%	100%	100%	-	06-Feb-14	11
Cambodia	107	45	73	0	0	0	58	15	7 (9.6%)	1.62	81%	96%	78%	100%	27-Jan-14	21
China	6173	2225	5719	0	0	0	4938	781	194 (3.4%)	2.57	92%	99%	100%	86%	12-Feb-14	5
Hong Kong (China)	14	8	12	0	0	0	12	0	0 (0.0%)	1.50	100%	100%	100%	-	06-Feb-14	11
Japan	0	167	0	-	-	-	-	-	-	-	-	-	-	-	-	-
Lao People's Democratic Republic	55	25	48	0	0	0	41	7	1 (2.1%)	1.92	58%	90%	98%	75%	28-Jan-14	20
Macao (China)	0	1	1	0	0	0	1	0	0 (0.0%)	1.00	100%	100%	100%	-	14-Jan-14	34
Malaysia	141	76	143	0	0	0	133	10	6 (4.2%)	1.88	85%	100%	74%	59%	24-Dec-13	55
Mongolia	9	7	7	0	0	0	5	2	0 (0.0%)	1.00	86%	100%	100%	100%	08-Feb-14	9
New Zealand	8	9	12	0	0	0	4	8	4 (33.3%)	1.33	42%	75%	83%	57%	28-Jan-14	20
Papua New Guinea	10	30	20	0	0	0	15	5	5 (25.0%)	0.67	15%	85%	85%	88%	10-Jan-14	38
Philippines	403	371	305	0	0	2	184	119	93 (30.5%)	0.82	67%	94%	98%	44%	10-Feb-14	7
Republic of Korea	95	76	83	0	0	0	66	17	1 (1.2%)	1.09	93%	100%	95%	100%	16-Jan-14	32
Singapore	10	6	7	0	0	0	7	0	0 (0.0%)	1.17	71%	100%	86%	100%	08-Jan-14	40
Viet Nam	514	241	425	0	0	0	297	128	69 (16.2%)	1.76	96%	99%	88%	61%	06-Feb-14	11
Pacific island countries	4	10	8	0	0	0	4	4	2 (25.0%)	0.80	63%	100%	100%	0%	03-Feb-14	14
<b>Total</b>	<b>7600</b>	<b>3341</b>	<b>6912</b>	<b>0</b>	<b>0</b>	<b>2</b>	<b>5814</b>	<b>1096</b>	<b>382 (5.5%)</b>	<b>2.07</b>	<b>90%</b>	<b>98%</b>	<b>98%</b>	<b>74%</b>		

1. Number (%) of reported cases pending classification more than 90 days from date of onset of paralysis to date of last report
2. Percentage of reported cases with two stool specimens collected 24 hours apart and within 14 days of onset of paralysis
3. Percentage of reported cases with at least one specimen
4. Percentage of reported cases investigated within two days of notification
5. Percentage of reported cases with inadequate specimens followed-up within 60 days of onset of paralysis
6. Countries are expected to submit data at least once per month to WPRO

Green	Reached or surpassed target
Yellow	Nearly reached target: 0.5–0.99 for non-polio AFP rate; 60–79% for other indicators
Red	Substantially below target

Table 2. Laboratory investigation of AFP cases with onset in 2013 and key laboratory indicators

Country	National polio laboratory	Total no. of AFP cases with specimens	Virus isolation results							% specimens positive for NPEV	Latest report date	Intratyptic differentiation / Sequencing lab <sup>1</sup>	No. of isolates referred	Intratyptic differentiation (ITD) results																	
			L20B positive	L20B positive + NPEV	NPEV only	Negative	Pending ≤ 14 days	Pending > 14 days	% results reported ≤ 14 days <sup>2</sup>					Type 1			Type 2			Type 3			NPEV <sup>3</sup>	Non-EV	Pending ITD	Discordant pending sequencing	% ITD results reported ≤ 7 days of receipt ≥ 80%				
														Wild	Sabin	VDPV	Wild	Sabin	VDPV	Wild	Sabin	VDPV									
Australia	VIDRL	44	0	0	9	35	0	0	100%	20%	29-Jan-14	VIDRL	0	-	-	-	-	-	-	-	-	-	-	-	-	-	-	-	-	-	-
Brunei Darussalam	VIDRL	1	0	0	0	1	0	0	100%	0%	29-Jan-14	VIDRL	0	-	-	-	-	-	-	-	-	-	-	-	-	-	-	-	-	-	-
Papua New Guinea	VIDRL	18	0	0	3	15	0	0	100%	16%	29-Jan-14	VIDRL	0	-	-	-	-	-	-	-	-	-	-	-	-	-	-	-	-	-	-
Pacific island countries	VIDRL	8	0	0	4	4	0	0	100%	44%	29-Jan-14	VIDRL	0	-	-	-	-	-	-	-	-	-	-	-	-	-	-	-	-	-	-
Japan	NIID	0	-	-	-	-	-	-	-	-	-	NIID	0	-	-	-	-	-	-	-	-	-	-	-	-	-	-	-	-	-	-
Cambodia	NIID	70	1	0	21	44	0	4	94%	26%	10-Feb-14	NIID	2	0	0	0	0	2	0	0	0	0	0	0	0	0	0	0	0	0	100%
Lao People's Democratic Republic	NIID	42	0	0	9	33	0	0	96%	19%	17-Jan-14	NIID	0	-	-	-	-	-	-	-	-	-	-	-	-	-	-	-	-	-	-
Malaysia	IMR	156	0	0	7	149	0	0	98%	3%	12-Feb-14	IMR	0	-	-	-	-	-	-	-	-	-	-	-	-	-	-	-	-	-	-
Mongolia	PHI	7	0	0	1	6	0	0	100%	14%	11-Feb-14	NIID	0	-	-	-	-	-	-	-	-	-	-	-	-	-	-	-	-	-	-
New Zealand	IESR	8	0	0	1	5	0	2	100%	18%	02-Dec-13	IESR	0	-	-	-	-	-	-	-	-	-	-	-	-	-	-	-	-	-	-
Philippines	RTTM	364	0	1	39	322	0	2	95%	9%	30-Jan-14	VIDRL	3	0	1	0	0	1	0	0	1	0	0	0	0	0	0	0	0	0	100%
Republic of Korea	NIH	82	0	0	2	76	4	0	100%	3%	16-Jan-14	NIID	0	-	-	-	-	-	-	-	-	-	-	-	-	-	-	-	-	-	-
Singapore	SGH	7	1	0	0	6	0	0	100%	0%	15-Jan-14	SGH	2	0	0	0	0	2	0	0	0	0	0	0	0	0	0	0	0	0	100%
Viet Nam, North	NIHE	229	2	0	41	186	0	0	95%	15%	11-Feb-14	NIID	4	0	0	0	0	2	0	0	0	2	0	0	0	0	0	0	0	0	100%
Viet Nam, South	PI	225	2	0	21	195	0	13	97%	9%	10-Jan-14	NIID	4	0	2	0	0	0	0	0	2	0	0	0	0	0	0	0	0	0	100%
China	CCDC	5658	97	0	51	5443	0	67	59%	1%	12-Feb-14		248	0	65	0	0	92	2	0	78	11	15	3	0	0	0	0	0	100%	
China, Anhui	Prov. Lab	266	4	0	2	257	0	3	52%	1%		Prov. Lab	12	0	3	0	0	4	0	0	5	0	0	0	0	0	0	0	0	0	100%
China, Beijing	Prov. Lab	31	0	0	0	30	0	1	77%	0%		Prov. Lab	16	0	6	0	0	7	0	0	3	0	0	0	0	0	0	0	0	0	100%
China, Fujian	Prov. Lab	160	3	0	1	153	0	3	77%	0%		Prov. Lab	7	0	2	0	0	3	0	0	2	0	0	0	0	0	0	0	0	0	100%
China, Gansu	Prov. Lab	112	4	0	1	106	0	1	73%	1%		Prov. Lab	12	0	1	0	0	6	0	0	5	0	2	0	0	0	0	0	0	0	100%
China, Guangdong	Prov. Lab	378	2	0	16	359	0	1	59%	3%		Prov. Lab	8	0	2	0	0	5	0	0	1	0	0	1	0	0	0	0	0	100%	
China, Guangxi	Prov. Lab	249	4	0	10	233	0	2	20%	4%		Prov. Lab	13	0	3	0	0	4	0	0	6	0	8	0	0	0	0	0	0	0	100%
China, Hebei	Prov. Lab	387	14	0	1	367	0	5	64%	0%		Prov. Lab	18	0	9	0	0	3	0	0	6	0	0	0	0	0	0	0	0	0	100%
China, Heilongjiang	Prov. Lab	128	3	0	0	125	0	0	79%	0%		Prov. Lab	6	0	1	0	0	0	0	0	5	0	0	0	0	0	0	0	0	0	100%
China, Henan	Prov. Lab	585	13	0	9	559	0	4	55%	1%		Prov. Lab	27	0	6	0	0	14	0	0	7	0	0	0	0	0	0	0	0	0	100%
China, Hunan	Prov. Lab	297	2	0	0	290	0	5	90%	0%		Prov. Lab	4	0	0	0	0	2	0	0	2	0	0	0	0	0	0	0	0	0	100%
China, Jiangsu	Prov. Lab	284	8	0	0	272	0	4	42%	0%		Prov. Lab	11	0	9	0	0	1	0	0	1	0	0	0	0	0	0	0	0	100%	
China, Jiangxi	Prov. Lab	190	2	0	0	188	0	0	70%	0%		Prov. Lab	26	0	0	0	0	9	2	0	4	11	0	0	0	0	0	0	0	0	100%
China, Jilin	Prov. Lab	68	0	0	0	68	0	0	60%	0%		Prov. Lab	0	-	-	-	-	-	-	-	-	-	-	-	-	-	-	-	-	-	
China, Shaanxi	Prov. Lab	113	1	0	0	111	0	1	91%	0%		Prov. Lab	0	-	-	-	-	-	-	-	-	-	-	-	-	-	-	-	-	-	
China, Shandong	Prov. Lab	389	14	0	0	366	0	9	70%	0%		Prov. Lab	26	0	7	0	0	8	0	0	11	0	0	0	0	0	0	0	0	0	100%
China, Shanghai	Prov. Lab	28	2	0	0	26	0	0	98%	0%		Prov. Lab	9	0	3	0	0	6	0	0	0	0	0	0	0	0	0	0	0	0	100%
China, Shanxi	Prov. Lab	219	3	0	0	214	0	2	42%	0%		Prov. Lab	4	0	2	0	0	2	0	0	0	0	1	1	0	0	0	0	0	0	100%
China, Sichuan	Prov. Lab	376	0	0	3	367	0	6	31%	1%		Prov. Lab	0	-	-	-	-	-	-	-	-	-	-	-	-	-	-	-	-	-	
China, Tianjin	Prov. Lab	28	1	0	0	27	0	0	86%	0%		Prov. Lab	2	0	0	0	0	2	0	0	0	0	0	0	0	0	0	0	0	0	100%
China, Xinjiang	Prov. Lab	90	5	0	0	82	0	3	82%	0%		Prov. Lab	12	0	2	0	0	6	0	0	4	0	0	0	0	0	0	0	0	0	100%
China, Yunnan	Prov. Lab	261	3	0	0	254	0	4	75%	0%		Prov. Lab	5	0	1	0	0	0	0	0	4	0	0	0	0	0	0	0	0	0	100%
China, Zhejiang	Prov. Lab	159	3	0	2	154	0	0	36%	1%		Prov. Lab	7	0	1	0	0	2	0	0	4	0	4	0	0	0	0	0	0	0	100%
China, Chongqing	Prov. Lab	85	0	0	3	81	0	1	76%	2%		CCDC	0	-	-	-	-	-	-	-	-	-	-	-	-	-	-	-	-	-	
China, Guizhou	Prov. Lab	241	0	0	1	240	0	0	73%	0%		CCDC	2	0	0	0	0	2	0	0	0	0	0	0	0	0	0	0	0	0	100%
China, Hainan	Prov. Lab	44	0	0	0	44	0	0	69%	0%		CCDC	2	0	0	0	0	1	0	0	1	0	0	0	0	0	0	0	0	0	100%
China, Hubei	Prov. Lab	231	3	0	0	222	0	6	41%	0%		CCDC	6	0	3	0	0	1	0	0	2	0	0	1	0	0	0	0	0	100%	
China, Liaoning	Prov. Lab	114	0	0	2	110	0	2	74%	1%		CCDC	4	0	2	0	0	2	0	0	0	0	0	0	0	0	0	0	0	0	100%
China, Neimongol	Prov. Lab	81	3	0	0	76	0	2	66%	0%		CCDC	4	0	0	0	0	0	0	0	4	0	0	0	0	0	0	0	0	0	100%
China, Ningxia	Prov. Lab	38	0	0	0	37	0	1	55%	0%		CCDC	5	0	2	0	0	2	0	0	1	0	0	0	0	0	0	0	0	0	100%
China, Qinghai	Prov. Lab	16	0	0	0	16	0	0	63%	0%		CCDC	0	-	-	-	-	-	-	-	-	-	-	-	-	-	-	-	-	-	
China, Tibet	Prov. Lab	10	0	0	0	9	0	1	11%	0%		CCDC	0	-	-	-	-	-	-	-	-	-	-	-	-	-	-	-	-	-	
Hong Kong (China)	PHLC	12	0	0	0	12	0	0	97%	0%	16-Jan-14	PHLC	0	-	-	-	-	-	-	-	-	-	-	-	-	-	-	-	-	-	
Macao (China)	PHLC	0	-	-	-	-	-	-	-	-	16-Jan-14	PHLC	0	-	-	-	-	-	-	-	-	-	-	-	-	-	-	-	-	-	
<b>Total</b>		<b>6931</b>	<b>103</b>	<b>1</b>	<b>209</b>	<b>6532</b>	<b>4</b>	<b>88</b>	<b>65%</b>	<b>2%</b>			<b>263</b>	<b>0</b>	<b>68</b>	<b>0</b>	<b>0</b>	<b>99</b>	<b>2</b>	<b>0</b>	<b>83</b>	<b>11</b>	<b>15</b>	<b>3</b>	<b>0</b>	<b>0</b>	<b>0</b>	<b>0</b>	<b>100%</b>		



Table 4. Vaccine-derived poliovirus, 2000–2013

Country	2000	2001	2002	2003	2004	2005	2006	2007	2008	2009	2010	2011	2012	2013
Cambodia						cVDPV3 (1 case)	cVDPV3 (1 case)							
China	aVDPV1 (1 case)	iVDPV1 (1 case) aVDPV3 (1 case)	aVDPV1 (1 case) aVDPV3 (1 case)		cVDPV1 (2 cases) ?VDPV1 (4 cases) ?VDPV2 (1 case)	iVDPV2 (1 case)	aVDPV1 (1 case) ?VDPV1 (7 cases) VDPV3 (1 case)	aVDPV1 (3 cases) ?VDPV1 (1 case)		aVDPV2 (1 case)	aVDPV2 (5 cases) aVDPV3 (2 cases)	aVDPV1 (1 case) aVDPV2 (3 cases) cVDPV2 (2 cases) iVDPV2 (2 cases) iVDPV3 (1 case)	aVDPV1 (1 case) aVDPV2 (2 cases) cVDPV2 (3 cases) iVDPV2 + iVDPV3 (1 case)	aVDPV2 (1 case) iVDPV2 + iVDPV3 (1 case)
Hong Kong (China)						?VDPV? (3 cases)								
Japan					?VDPV? (1 case)	?VDPV3 (1 case)								
Lao People's Democratic Republic					aVDPV2 (1 case) ?VDPV? (2 cases)									
Mongolia				?VDPV? (1 case)										
Philippines		cVDPV1 (3 cases)												
Viet Nam													aVDPV2 (2 cases)	