

## HIGHLIGHTS

### Polio End-game Strategy in WPRO: Moving Forward

In the last couple of weeks, several communications were shared with respective countries in view of the IPV introduction in 2015 and Polio vaccine switch planned in 2016:

- SAGE recommendations on recommended immunization schedules (SAGE Meeting, November 2013)
- GAVI letters to Ministers of Health and EPI managers sent to selected countries as beneficiaries of IPV support.



The letters developed criteria of support, type of financial support provided, duration of the support, tools for simplified application with timeline and guidelines.

- Letters addressed to Ministers of Health co-signed by WHO Director General, UNICEF Executive Director and GAVI CEO were sent last week to GAVI and non-GAVI eligible countries. The countries are targeted for IPV introduction in 2015 and OPV type 2 withdrawal in 2016. In WPRO, 17 countries are eligible for introduction of a dose of IPV dose latest by end of 2015 within their immunization schedule, while 21 countries need to consider withdrawal of OPV type 2 in 2016.
- As per WPRO 22nd EPI TAG Meeting recommendation, the 17 selected countries need to express urgently some information as date of potential date of IPV introduction and vaccine preferred presentation in order to get adequate and timely procurement.
- WHO Secretariat at country and Regional levels have received all related documents and could provide assistance and guidance upon request to each Member State.

## CONTACT US

Expanded Programme on Immunization  
Regional Office for the Western Pacific  
World Health Organization  
P.O. Box 2932, 1000 Manila, Philippines  
Phone: +63 2 5288001  
Fax: +63 2 5211036, 5260279  
Email: [WPR\\_EPIdata@wpro.who.int](mailto:WPR_EPIdata@wpro.who.int)  
Web: [www.wpro.who.int/immunization](http://www.wpro.who.int/immunization)

Chart 1. Non-polio AFP rate and adequate specimen collection rate, 2011–2013

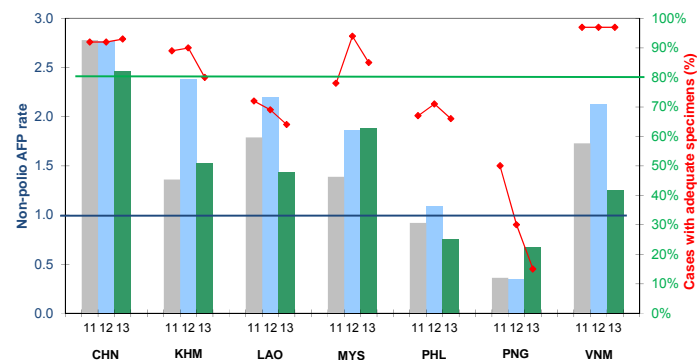


Chart 2. Percent cases with pending classification > 90 days after onset, 2013

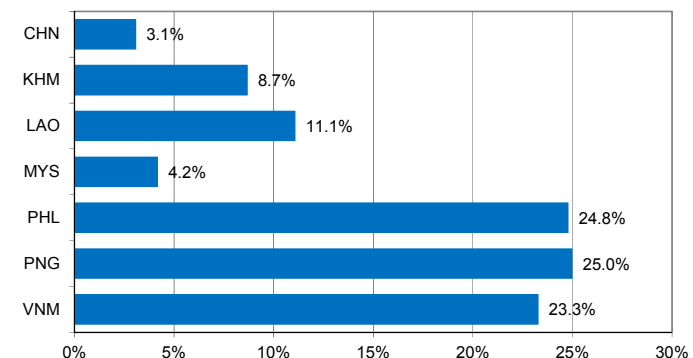


Chart 3. Polio immunization status of reported AFP cases, 2013

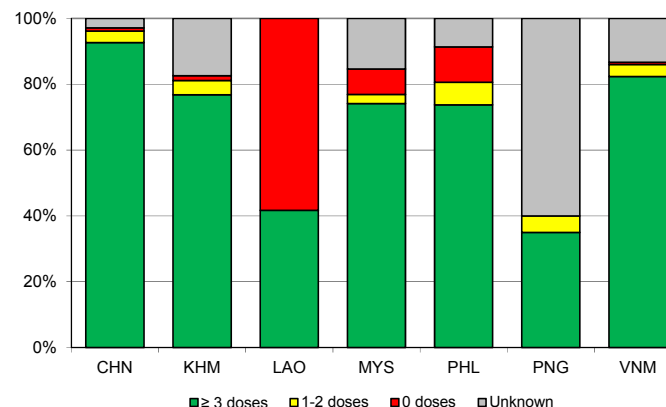
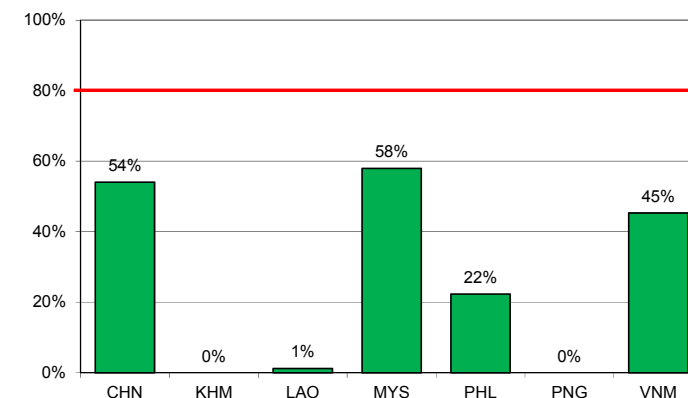


Chart 4. Percentage of samples received at the lab ≤ 3 days of collection, 2013



Note: Priority countries were selected for the charts. Official WHO acronyms have been used for abbreviation: CHN (China), KHM (Cambodia), LAO (Lao People's Democratic Republic), MYS (Malaysia), PHL (Philippines), PNG (Papua New Guinea), and VNM (Viet Nam).

Table 1. Classification of AFP cases with onset in 2013 and key surveillance indicators

	2012		2013													
	Total reported cases	Annual expected cases <15 years of age	Total reported cases	Classification						Indicators					Latest report date	Days since last report <sup>7</sup>
				Confirmed wild poliovirus	Vaccine-derived poliovirus (VDPV)	Polio-compatible	Discarded (Non-polio)	Pending		Non-polio AFP rate <sup>2</sup>	% with adequate specimens <sup>3</sup>	% with any specimen <sup>4</sup>	% investigated ≤ 2 days of notification <sup>5</sup>	% with 60-day follow-up <sup>6</sup>		
								Total	> 90 days <sup>1</sup> # (%)							
≥ 1	≥ 80%		≥ 80%	≥ 80%												
Australia	56	43	48	0	0	0	48	0	0 (0.0%)	1.12	42%	73%	100%	0%	09-Dec-13	43
Brunei Darussalam	1	1	1	0	0	0	1	0	0 (0.0%)	1.00	100%	100%	100%	-	17-Aug-13	157
Cambodia	107	45	69	0	0	0	56	13	6 (8.7%)	1.53	80%	96%	81%	93%	14-Jan-14	7
China	6173	2225	5471	0	0	0	4537	934	170 (3.1%)	2.46	93%	99%	100%	87%	15-Jan-14	6
Hong Kong (China)	14	8	12	0	0	0	12	0	0 (0.0%)	1.50	100%	100%	100%	-	03-Jan-14	18
Japan	0	167	0	-	-	-	-	-	-	-	-	-	-	-	-	-
Lao People's Democratic Republic	55	25	36	0	0	0	24	12	4 (11.1%)	1.44	64%	86%	100%	23%	04-Nov-13	78
Macao (China)	0	1	1	0	0	0	1	0	0 (0.0%)	1.00	100%	100%	100%	-	14-Jan-14	7
Malaysia	141	76	143	0	0	0	133	10	6 (4.2%)	1.88	85%	100%	74%	59%	24-Dec-13	28
Mongolia	9	7	7	0	0	0	4	3	0 (0.0%)	1.00	86%	100%	100%	100%	14-Jan-14	7
New Zealand	8	9	10	0	0	0	4	6	0 (0.0%)	1.11	50%	70%	90%	40%	28-Nov-13	54
Papua New Guinea	10	30	20	0	0	0	15	5	5 (25.0%)	0.67	15%	85%	85%	88%	10-Jan-14	11
Philippines	403	371	278	0	0	1	164	113	69 (24.8%)	0.75	66%	93%	97%	45%	06-Dec-13	46
Republic of Korea	95	76	83	0	0	0	66	17	1 (1.2%)	1.09	93%	100%	95%	100%	16-Jan-14	5
Singapore	10	6	7	0	0	0	7	0	0 (0.0%)	1.17	71%	100%	86%	100%	08-Jan-14	13
Viet Nam	514	241	301	0	0	0	187	114	70 (23.3%)	1.25	97%	99%	89%	60%	29-Oct-13	84
Pacific island countries	4	10	7	0	0	0	4	3	2 (28.6%)	0.70	71%	100%	100%	0%	09-Dec-13	43
<b>Total</b>	<b>7600</b>	<b>3341</b>	<b>6494</b>	<b>0</b>	<b>0</b>	<b>1</b>	<b>5263</b>	<b>1230</b>	<b>333 (5.1%)</b>	<b>1.94</b>	<b>91%</b>	<b>98%</b>	<b>98%</b>	<b>73%</b>		

1. Number (%) of reported cases pending classification more than 90 days from date of onset of paralysis to date of last report
2. Annualized non-polio AFP rate per 100 000 population under 15 years of age
3. Percentage of reported cases with two stool specimens collected 24 hours apart and within 14 days of onset of paralysis
4. Percentage of reported cases with at least one specimen
5. Percentage of reported cases investigated within two days of notification
6. Percentage of reported cases with inadequate specimens followed-up within 60 days of onset of paralysis
7. Countries are expected to submit data at least once per month to WPRO

Green	Reached or surpassed target
Yellow	Nearly reached target: 0.5–0.99 for non-polio AFP rate; 60–79% for other indicators
Red	Substantially below target





Table 4. Vaccine-derived poliovirus, 2000–2013

Country	2000	2001	2002	2003	2004	2005	2006	2007	2008	2009	2010	2011	2012	2013
Cambodia						cVDPV3 (1 case)	cVDPV3 (1 case)							
China	aVDPV1 (1 case)	iVDPV1 (1 case) aVDPV3 (1 case)	aVDPV1 (1 case) aVDPV3 (1 case)		cVDPV1 (2 cases) ?VDPV1 (4 cases) ?VDPV2 (1 case)	iVDPV2 (1 case)	aVDPV1 (1 case) ?VDPV1 (7 cases) VDPV3 (1 case)	aVDPV1 (3 cases) ?VDPV1 (1 case)		aVDPV2 (1 case)	aVDPV2 (5 cases) aVDPV3 (2 cases)	aVDPV1 (1 case) aVDPV2 (3 cases) cVDPV2 (2 cases) iVDPV2 (2 cases) iVDPV3 (1 case)	aVDPV1 (1 case) aVDPV2 (2 cases) cVDPV2 (3 cases) iVDPV2 (1 case) iVDPV3 (1 case)	aVDPV2 (1 case) iVDPV2 (1 case) iVDPV3 (1 case)
Hong Kong (China)						?VDPV? (3 cases)								
Japan					?VDPV? (1 case)	?VDPV3 (1 case)								
Lao People's Democratic Republic					aVDPV2 (1 case) ?VDPV? (2 cases)									
Mongolia				?VDPV? (1 case)										
Philippines		cVDPV1 (3 cases)												
Viet Nam													aVDPV2 (2 cases)	