

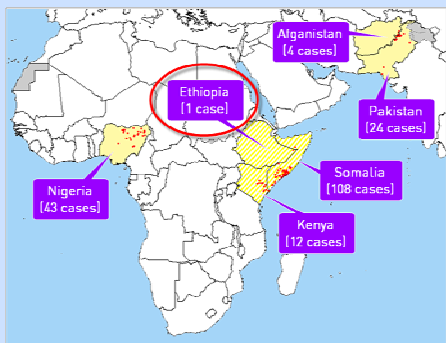
HIGHLIGHTS

Global Polio Update

Ten new WPV1 cases were reported in previously infected districts in Kenya and Somalia.

Ethiopia has seen its first case of WPV1 since 2008, reported on 14 August, in an 18-month child living in the Somali Region (Warder district), an area that borders Somalia. The child had never been vaccinated with oral polio vaccine (OPV).

In Ethiopia, an immediate local immunization campaign is being conducted in the vicinity of the case, with a larger-scale SIA planned targeting 950 000 children under the age of five years. Additional SIAs are planned from September to November. Confirmation of the case in Ethiopia underscores the risk this outbreak continues to pose to countries across the region.



Polio and the Haj

Due to the risk of spread, Saudi Arabia has said all Haj pilgrims coming from Somalia and Kenya are required to produce polio vaccination certificates upon arrival in the kingdom. "These pilgrims should produce their polio vaccination certificate at the port of arrival in the kingdom," a health ministry official said. "Upon arrival, these pilgrims will be given another dose of polio vaccine irrespective of their age," the official added.

CONTACT US

Expanded Programme on Immunization
Regional Office for the Western Pacific
World Health Organization
P.O. Box 2932, 1000 Manila, Philippines
Phone: +63 2 5288001
Fax: +63 2 5211036, 5260279
Email: WPR_EPIdata@wpro.who.int
Web: www.wpro.who.int/immunization

Chart 1. Non-polio AFP rate and adequate specimen collection rate, 2011–2013

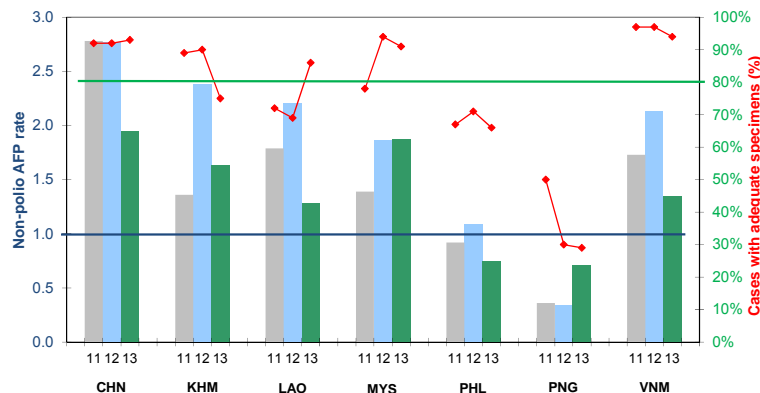


Chart 2. Percent cases with pending classification > 90 days after onset, 2013

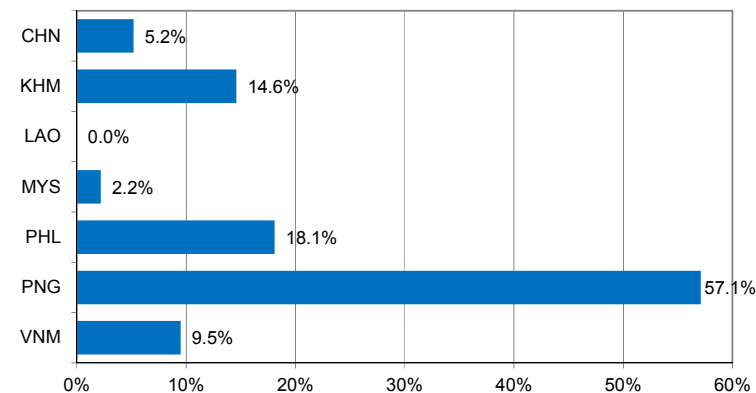


Chart 3. Polio immunization status of reported AFP cases, 2013

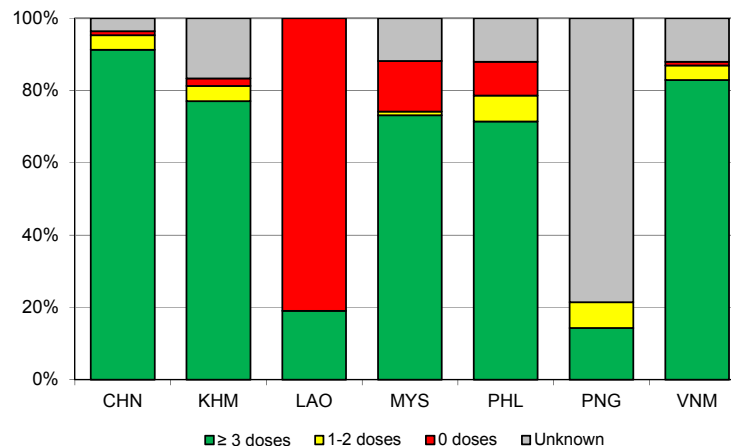
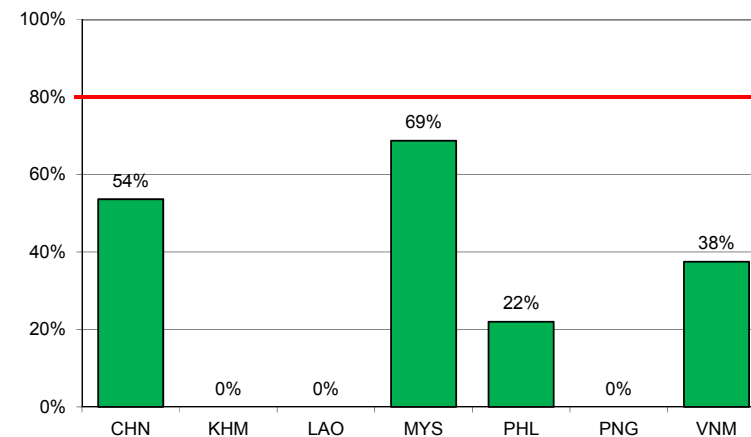


Chart 4. Percentage of samples received at the lab ≤ 3 days of collection, 2013



NOTES:

- Priority countries were selected for the charts. Official WHO acronyms have been used for abbreviation: CHN (China), KHM (Cambodia), LAO (Lao People's Democratic Republic), MYS (Malaysia), PHL (Philippines), PNG (Papua New Guinea), and VNM (Viet Nam).
- Non-polio AFP rate for 2013 is annualized as of polio week 34.

Table 1. Classification of AFP cases with onset in 2013 and key surveillance indicators

	2012		2013													
	Total reported cases	Annual expected cases <15 years of age	Total reported cases	Classification						Indicators					Latest report date	Days since last report ⁷
				Confirmed wild poliovirus	Vaccine-derived poliovirus (VDPV)	Polio-compatible	Discarded (Non-polio)	Pending		Non-polio AFP rate ²	% with adequate specimens ³	% with any specimen ⁴	% investigated ≤ 2 days of notification ⁵	% with 60-day follow-up ⁶		
								Total	> 90 days ¹ # (%)							
≥ 1	≥ 80%		≥ 80%	≥ 80%												
Australia	56	43	30	0	0	0	30	0	0 (0.0%)	1.07	40%	70%	100%	0%	27-Aug-13	0
Brunei Darussalam	1	1	1	0	0	0	1	0	0 (0.0%)	1.53	100%	100%	100%	-	17-Aug-13	10
Cambodia	107	45	48	0	0	0	26	22	7 (14.6%)	1.63	75%	94%	81%	83%	21-Aug-13	6
China	6173	2225	2841	0	0	0	1960	881	148 (5.2%)	1.95	93%	99%	100%	77%	21-Aug-13	6
Hong Kong (China)	14	8	5	0	0	0	5	0	0 (0.0%)	0.96	100%	100%	100%	-	01-Aug-13	26
Japan	0	167	0	-	-	-	-	-	-	-	-	-	-	-	-	-
Lao People's Democratic Republic	55	25	21	0	0	0	16	5	0 (0.0%)	1.28	86%	100%	100%	33%	12-Aug-13	15
Macao (China)	0	1	1	0	0	0	1	0	0 (0.0%)	1.53	100%	100%	100%	-	12-Aug-13	15
Malaysia	141	76	93	0	0	0	84	9	2 (2.2%)	1.87	91%	100%	57%	38%	13-Aug-13	14
Mongolia	9	7	3	0	0	0	2	1	0 (0.0%)	0.66	67%	100%	100%	0%	08-Aug-13	19
New Zealand	8	9	4	0	0	0	0	4	2 (50.0%)	0.68	0%	50%	100%	25%	22-Aug-13	5
Papua New Guinea	10	30	14	0	0	0	3	11	8 (57.1%)	0.71	29%	50%	71%	20%	18-Aug-13	9
Philippines	403	371	182	0	0	1	122	59	33 (18.1%)	0.75	66%	92%	98%	62%	20-Aug-13	7
Republic of Korea	94	76	55	0	0	0	24	31	5 (9.1%)	1.11	93%	100%	98%	75%	20-Aug-13	7
Singapore	10	6	6	0	0	0	6	0	0 (0.0%)	1.53	67%	100%	83%	50%	13-Aug-13	14
Viet Nam	514	241	199	0	0	0	112	87	19 (9.5%)	1.26	94%	97%	94%	45%	31-Jul-13	27
Pacific island countries	4	10	2	0	0	0	0	2	1 (50.0%)	0.31	100%	100%	100%	-	05-Aug-13	22
Total	7599	3341	3505	0	0	1	2392	1112	225 (6.4%)	1.60	90%	98%	98%	65%		

1. Number (%) of reported cases pending classification more than 90 days from date of onset of paralysis to date of last report
2. Annualized non-polio AFP rate per 100 000 population under 15 years of age
3. Percentage of reported cases with two stool specimens collected 24 hours apart and within 14 days of onset of paralysis
4. Percentage of reported cases with at least one specimen
5. Percentage of reported cases investigated within two days of notification
6. Percentage of reported cases with inadequate specimens followed-up within 60 days of onset of paralysis
7. Countries are expected to submit data at least once per month to WPRO

Green	Reached or surpassed target
Yellow	Nearly reached target: 0.5–0.99 for non-polio AFP rate; 60–79% for other indicators
Red	Substantially below target

Table 2. Laboratory investigation of AFP cases with onset in 2013 and key laboratory indicators

Country	National polio laboratory	Total no. of AFP cases with specimens	Virus isolation results							% specimens positive for NPEV	Latest report date	Intratyphic differentiation / Sequencing lab ¹	No. of isolates referred	Intratyphic differentiation (ITD) results																					
			L20B positive	L20B positive + NPEV	NPEV only	Negative	Pending ≤ 14 days	Pending > 14 days	% results reported ≤ 14 days ²					Type 1			Type 2			Type 3			NPEV ³	Non-EV	Pending ITD	Discordant pending sequencing	% ITD results reported ≤ 7 days of receipt ≥ 80%								
														Wild	Sabin	VDPV	Wild	Sabin	VDPV	Wild	Sabin	VDPV													
Australia	VIDRL	24	0	0	7	17	0	0	100%	30%	19-Jul-13	VIDRL	0	-	-	-	-	-	-	-	-	-	-	-	-	-	-	-	-	-	-	-	-		
Brunei Darussalam	VIDRL	1	0	0	0	1	0	0	100%	0%	19-Jul-13	VIDRL	0	-	-	-	-	-	-	-	-	-	-	-	-	-	-	-	-	-	-	-	-		
Papua New Guinea	VIDRL	8	0	0	1	7	0	0	100%	7%	19-Jul-13	VIDRL	0	-	-	-	-	-	-	-	-	-	-	-	-	-	-	-	-	-	-	-	-		
Pacific island countries	VIDRL	2	0	0	2	0	0	0	100%	100%	19-Jul-13	VIDRL	0	-	-	-	-	-	-	-	-	-	-	-	-	-	-	-	-	-	-	-	-		
Japan	NIID	0	-	-	-	-	-	-	-	-	-	NIID	0	-	-	-	-	-	-	-	-	-	-	-	-	-	-	-	-	-	-	-	-		
Cambodia	NIID	43	0	0	14	29	0	0	93%	27%	26-Aug-13	NIID	0	-	-	-	-	-	-	-	-	-	-	-	-	-	-	-	-	-	-	-	-		
Lao People's Democratic Republic	NIID	18	0	0	5	13	0	0	92%	22%	14-Aug-13	NIID	0	-	-	-	-	-	-	-	-	-	-	-	-	-	-	-	-	-	-	-	-		
Malaysia	IMR	96	0	0	10	83	0	3	98%	5%	20-Aug-13	IMR	0	-	-	-	-	-	-	-	-	-	-	-	-	-	-	-	-	-	-	-	-	-	
Mongolia	PHI	3	0	0	0	3	0	0	100%	0%	07-Aug-13	NIID	0	-	-	-	-	-	-	-	-	-	-	-	-	-	-	-	-	-	-	-	-		
New Zealand	IJSR	1	0	0	0	1	0	0	100%	0%	01-Aug-13	IJSR	0	-	-	-	-	-	-	-	-	-	-	-	-	-	-	-	-	-	-	-	-	-	
Philippines	RITM	252	0	1	35	213	6	1	97%	11%	23-Aug-13	VIDRL	3	0	1	0	0	1	0	0	1	0	0	0	0	0	0	0	0	0	0	0	100%		
Republic of Korea	NIH	54	0	0	28	16	0	10	100%	29%	20-Aug-13	NIID	0	-	-	-	-	-	-	-	-	-	-	-	-	-	-	-	-	-	-	-	-	-	
Singapore	SGH	7	1	0	0	6	0	0	100%	0%	26-Aug-13	SGH	2	0	0	0	0	2	0	0	0	0	0	0	0	0	0	0	0	0	0	0	100%		
Viet Nam, North	NIHE	128	1	0	17	106	0	4	90%	13%	09-Aug-13	NIID	2	0	0	0	0	2	0	0	0	0	0	0	0	0	0	0	0	0	0	0	100%		
Viet Nam, South	PI	125	0	0	10	103	0	12	96%	8%	06-Aug-13	NIID	0	-	-	-	-	-	-	-	-	-	-	-	-	-	-	-	-	-	-	-	-	-	
China	CCDC																																		
China (total)		2811	54	0	52	2669	1	35	57%	1%	21-Aug-13		125	0	28	0	0	55	0	0	37	5	8	2	0	0	0	0	0	0	0	100%			
China, Anhui	Prov. Lab	124	1	0	2	119	0	2	59%	1%		Prov. Lab	8	0	3	0	0	3	0	0	2	0	0	0	0	0	0	0	0	0	0	0	100%		
China, Beijing	Prov. Lab	22	0	0	0	22	0	0	68%	0%		Prov. Lab	5	0	1	0	0	4	0	0	0	0	0	0	0	0	0	0	0	0	0	0	100%		
China, Fujian	Prov. Lab	89	2	0	2	83	0	2	68%	2%		Prov. Lab	3	0	0	0	0	3	0	0	0	0	0	0	0	0	0	0	0	0	0	0	100%		
China, Gansu	Prov. Lab	70	5	0	0	63	0	2	70%	0%		Prov. Lab	11	0	0	0	0	6	0	0	5	0	2	0	0	0	0	0	0	0	0	0	100%		
China, Guangdong	Prov. Lab	167	1	0	16	150	0	0	57%	8%		Prov. Lab	3	0	0	0	0	2	0	0	1	0	0	1	0	0	1	0	0	0	0	0	100%		
China, Guangxi	Prov. Lab	119	2	0	12	105	0	0	26%	9%		Prov. Lab	6	0	0	0	0	2	0	0	4	0	6	0	0	0	0	0	0	0	0	0	100%		
China, Hebei	Prov. Lab	178	5	0	1	172	0	0	62%	0%		Prov. Lab	2	0	0	0	0	1	0	0	1	0	0	0	0	0	0	0	0	0	0	0	100%		
China, Heilongjiang	Prov. Lab	65	0	0	0	65	0	0	88%	0%		Prov. Lab	0	-	-	-	-	-	-	-	-	-	-	-	-	-	-	-	-	-	-	-	-	-	
China, Henan	Prov. Lab	297	6	0	9	281	0	1	55%	2%		Prov. Lab	13	0	5	0	0	7	0	0	1	0	0	0	0	0	0	0	0	0	0	0	100%		
China, Hunan	Prov. Lab	153	2	0	0	150	0	1	90%	0%		Prov. Lab	4	0	0	0	0	2	0	0	2	0	0	0	0	0	0	0	0	0	0	0	100%		
China, Jiangsu	Prov. Lab	154	8	0	0	145	0	1	19%	0%		Prov. Lab	9	0	7	0	0	1	0	0	1	0	0	0	0	0	0	0	0	0	0	0	100%		
China, Jiangxi	Prov. Lab	94	1	0	0	91	0	2	68%	0%		Prov. Lab	16	0	0	0	0	6	0	0	5	5	0	0	0	0	0	0	0	0	0	0	100%		
China, Jilin	Prov. Lab	40	0	0	0	40	0	0	71%	0%		Prov. Lab	0	-	-	-	-	-	-	-	-	-	-	-	-	-	-	-	-	-	-	-	-	-	
China, Shaanxi	Prov. Lab	54	0	0	0	54	0	0	80%	0%		Prov. Lab	0	-	-	-	-	-	-	-	-	-	-	-	-	-	-	-	-	-	-	-	-	-	
China, Shandong	Prov. Lab	169	4	0	0	164	0	1	72%	0%		Prov. Lab	11	0	5	0	0	2	0	0	4	0	0	0	0	0	0	0	0	0	0	0	100%		
China, Shanghai	Prov. Lab	15	0	0	0	15	0	0	100%	0%		Prov. Lab	1	0	0	0	0	1	0	0	0	0	0	0	0	0	0	0	0	0	0	0	0	100%	
China, Shanxi	Prov. Lab	110	3	0	0	106	0	1	38%	0%		Prov. Lab	4	0	2	0	0	2	0	0	0	0	0	0	0	0	0	0	0	0	0	0	0	100%	
China, Sichuan	Prov. Lab	166	0	0	3	157	0	6	25%	2%		Prov. Lab	0	-	-	-	-	-	-	-	-	-	-	-	-	-	-	-	-	-	-	-	-	-	
China, Tianjin	Prov. Lab	12	1	0	0	11	0	0	75%	0%		Prov. Lab	2	0	0	0	0	2	0	0	0	0	0	0	0	0	0	0	0	0	0	0	0	100%	
China, Xinjiang	Prov. Lab	47	3	0	0	43	0	1	83%	0%		Prov. Lab	8	0	0	0	0	6	0	0	2	0	0	0	0	0	0	0	0	0	0	0	0	100%	
China, Yunnan	Prov. Lab	142	2	0	0	134	0	6	72%	0%		Prov. Lab	3	0	1	0	0	0	0	0	2	0	0	0	0	0	0	0	0	0	0	0	0	100%	
China, Zhejiang	Prov. Lab	61	3	0	0	56	0	2	42%	0%		Prov. Lab	7	0	1	0	0	2	0	0	4	0	0	0	0	0	0	0	0	0	0	0	0	100%	
China, Chongqing	Prov. Lab	49	0	0	3	43	0	3	84%	4%		CCDC	0	-	-	-	-	-	-	-	-	-	-	-	-	-	-	-	-	-	-	-	-	-	
China, Guizhou	Prov. Lab	127	0	0	1	123	0	3	75%	0%		CCDC	0	-	-	-	-	-	-	-	-	-	-	-	-	-	-	-	-	-	-	-	-	-	
China, Hainan	Prov. Lab	17	0	0	0	17	0	0	62%	0%		CCDC	0	-	-	-	-	-	-	-	-	-	-	-	-	-	-	-	-	-	-	-	-	-	
China, Hubei	Prov. Lab	127	3	0	0	124	0	0	19%	0%		CCDC	6	0	3	0	0	1	0	0	2	0	0	1	0	0	0	0	0	0	0	0	100%		
China, Liaoning	Prov. Lab	65	0	0	2	62	1	0	69%	2%		CCDC	0	-	-	-	-	-	-	-	-	-	-	-	-	-	-	-	-	-	-	-	-	-	
China, Neimongol	Prov. Lab	40	2	0	0	38	0	0	55%	0%		CCDC	1	0	0	0	0	0	0	0	1	0	0	0	0	0	0	0	0	0	0	0	100%		
China, Ningxia	Prov. Lab	26	0	0	0	25	0	1	50%	0%		CCDC	2	0	0	0	0	2	0	0	0	0	0	0	0	0	0	0	0	0	0	0	100%		
China, Qinghai	Prov. Lab	4	0	0	1	3	0	0	25%	13%		CCDC	0	-	-	-	-	-	-	-	-	-	-	-	-	-	-	-	-	-	-	-	-	-	
China, Tibet	Prov. Lab	8	0	0	0	8	0	0	13%	0%		CCDC	0	-	-	-	-	-	-	-	-	-	-	-	-	-	-	-	-	-	-	-	-	-	
Hong Kong (China)	PHLC	5	0	0	0	5	0	0	90%	0%	14-Aug-13	PHLC	0	-	-	-	-	-	-	-	-	-	-	-	-	-	-	-	-	-	-	-	-	-	
Macao (China)	PHLC	0	-	-	-	-	-	-	-	-	14-Aug-13	PHLC	0	-	-	-	-	-	-	-	-	-	-	-	-	-	-	-	-	-	-	-	-	-	-
Total		3578	56	1	181	3272	7	65	64%	3%			132	0	29	0	0	60	0	0	38	5	8	2	0	0	0	0	0	0	100%				

1. IJSR (Institute of Environmental Science and Research, New Zealand); IMR (Institute of Medical Research, Malaysia); NIH (National Institute of Health, Republic of Korea); NIHE (National Institute of Hygiene and Epidemiology, Ha Noi, Viet Nam); NIID (National Institute of Infectious Diseases, Japan); PHI (Public Health Institute, Mongolia); PHLC (Public Health Laboratory Center, Hong Kong); PI (Pasteur Institute, Ho Chi Minh, Viet Nam); RITM (Research Institute for Tropical Medicine, Philippines); SGH (Singapore General Hospital); VIDRL (Victorian Infectious Diseases Reference Laboratory, Australia)

2. The target of 14 days for the timeliness of virus isolation will be used for all polio laboratories

3. NPEV growing in L20B cells

4. Twenty-two provincial laboratories in China perform ITD from 2013

Table 3. Laboratory confirmation of polio isolates from other sources in 2013 ¹

Country	Intratype differentiation lab ²	Non-AFP cases													Environmental samples														
		Total number of non-AFP cases with polio isolates	Type 1			Type 2			Type 3			NPEV grown in L20B	Non-EV	Pending ITD	Discordant pending sequencing	Total number of samples with polio isolates	Type 1			Type 2			Type 3			NPEV grown in L20B	Non-EV	Pending ITD	Discordant pending sequencing
			Wild	Sabin	VDPV	Wild	Sabin	VDPV	Wild	Sabin	VDPV						Wild	Sabin	VDPV	Wild	Sabin	VDPV	Wild	Sabin	VDPV				
Australia	VIDRL	0	-	-	-	-	-	-	-	-	-	-	-	-	0	-	-	-	-	-	-	-	-	-	-	-	-	-	
Japan	NIID	0	-	-	-	-	-	-	-	-	-	-	-	-	0	-	-	-	-	-	-	-	-	-	-	-	-	-	
Malaysia	IMR	0	-	-	-	-	-	-	-	-	-	-	-	-	1	0	0	0	0	0	0	0	1	0	0	0	0	0	
New Zealand	IESR	0	-	-	-	-	-	-	-	-	-	-	-	-	0	-	-	-	-	-	-	-	-	-	-	-	-	-	
Philippines	VIDRL	6	0	5	0	0	1	0	0	1	0	0	0	0	0	-	-	-	-	-	-	-	-	-	-	-	-	-	
Republic of Korea	NIID	0	-	-	-	-	-	-	-	-	-	-	-	-	0	-	-	-	-	-	-	-	-	-	-	-	-	-	
Singapore	SGH	0	-	-	-	-	-	-	-	-	-	-	-	-	0	-	-	-	-	-	-	-	-	-	-	-	-	-	
Viet Nam, North	NIID	0	-	-	-	-	-	-	-	-	-	-	-	-	0	-	-	-	-	-	-	-	-	-	-	-	-	-	
Viet Nam, South	NIID	0	-	-	-	-	-	-	-	-	-	-	-	-	0	-	-	-	-	-	-	-	-	-	-	-	-	-	
China	CCDC	0	-	-	-	-	-	-	-	-	-	-	-	-	0	-	-	-	-	-	-	-	-	-	-	-	-	-	
China, Gansu	Prov. Lab	7	0	7	0	0	4	0	0	4	0	0	0	0	0	-	-	-	-	-	-	-	-	-	-	-	-	-	
China, Guangdong	Prov. Lab	3	0	0	0	0	0	1	0	0	0	0	2	0	0	-	-	-	-	-	-	-	-	-	-	-	-	-	
China, Guangxi	Prov. Lab	0	-	-	-	-	-	-	-	-	-	-	-	-	0	-	-	-	-	-	-	-	-	-	-	-	-	-	
China, Heilongjiang	Prov. Lab	0	-	-	-	-	-	-	-	-	-	-	-	-	0	-	-	-	-	-	-	-	-	-	-	-	-	-	
China, Jilin	Prov. Lab	0	-	-	-	-	-	-	-	-	-	-	-	-	0	-	-	-	-	-	-	-	-	-	-	-	-	-	
China, Shandong	Prov. Lab	0	-	-	-	-	-	-	-	-	-	-	-	-	0	-	-	-	-	-	-	-	-	-	-	-	-	-	
China, Shanghai	Prov. Lab	0	-	-	-	-	-	-	-	-	-	-	-	-	0	-	-	-	-	-	-	-	-	-	-	-	-	-	
China, Sichuan	Prov. Lab	1	0	0	0	0	0	0	0	1	0	0	0	0	0	-	-	-	-	-	-	-	-	-	-	-	-	-	
China, Xinjiang	Prov. Lab	0	-	-	-	-	-	-	-	-	-	-	-	-	0	-	-	-	-	-	-	-	-	-	-	-	-	-	
China, Yunnan	Prov. Lab	0	-	-	-	-	-	-	-	-	-	-	-	-	0	-	-	-	-	-	-	-	-	-	-	-	-	-	
Hong Kong (China)	PHLC	1	0	1	0	0	0	0	0	0	0	0	0	0	0	-	-	-	-	-	-	-	-	-	-	-	-	-	
Total		18	0	13	0	0	5	1	0	6	0	0	2	0	1	0	0	0	0	0	0	1	0	0	0	0	0	0	

1. Based on year of collection of sample, if available. Otherwise, based on year of receipt at reference laboratory.

2. CCDC (Chinese Center for Disease Control and Prevention, China); IESR (Institute of Environmental Science and Research, New Zealand); IMR (Institute of Medical Research, Malaysia); NIID (National Institute of Infectious Diseases, Japan); PHLC (Public Health Laboratory Center, Hong Kong); SGH (Singapore General Hospital); VIDRL (Victorian Infectious Diseases Reference Laboratory, Australia)

Table 4. Vaccine-derived poliovirus, 2000–2013

Country	2000	2001	2002	2003	2004	2005	2006	2007	2008	2009	2010	2011	2012	2013
Cambodia						cVDPV3 (1 case)	cVDPV3 (1 case)							
China	aVDPV1 (1 case)	iVDPV1 (1 case) aVDPV3 (1 case)	aVDPV1 (1 case) aVDPV3 (1 case)		cVDPV1 (2 cases) ?VDPV1 (4 cases) ?VDPV2 (1 case)	iVDPV2 (1 case)	aVDPV1 (1 case) ?VDPV1 (7 cases) VDPV3 (1 case)	aVDPV1 (3 cases) ?VDPV1 (1 case)		aVDPV2 (1 case)	aVDPV2 (5 cases) aVDPV3 (2 cases)	aVDPV1 (1 case) aVDPV2 (3 cases) cVDPV2 (2 cases) iVDPV2 (2 cases) iVDPV3 (1 case)	aVDPV1 (1 case) aVDPV2 (2 cases) cVDPV2 (3 cases) iVDPV2 (1 case) iVDPV3 (1 case)	aVDPV2 (1 case) iVDPV3 (1 case)
Hong Kong (China)						?VDPV? (3 cases)								
Japan					?VDPV? (1 case)	?VDPV3 (1 case)								
Lao People's Democratic Republic					aVDPV2 (1 case) ?VDPV? (2 cases)									
Mongolia				?VDPV? (1 case)										
Philippines		cVDPV1 (3 cases)												
Viet Nam													aVDPV2 (2 cases)	