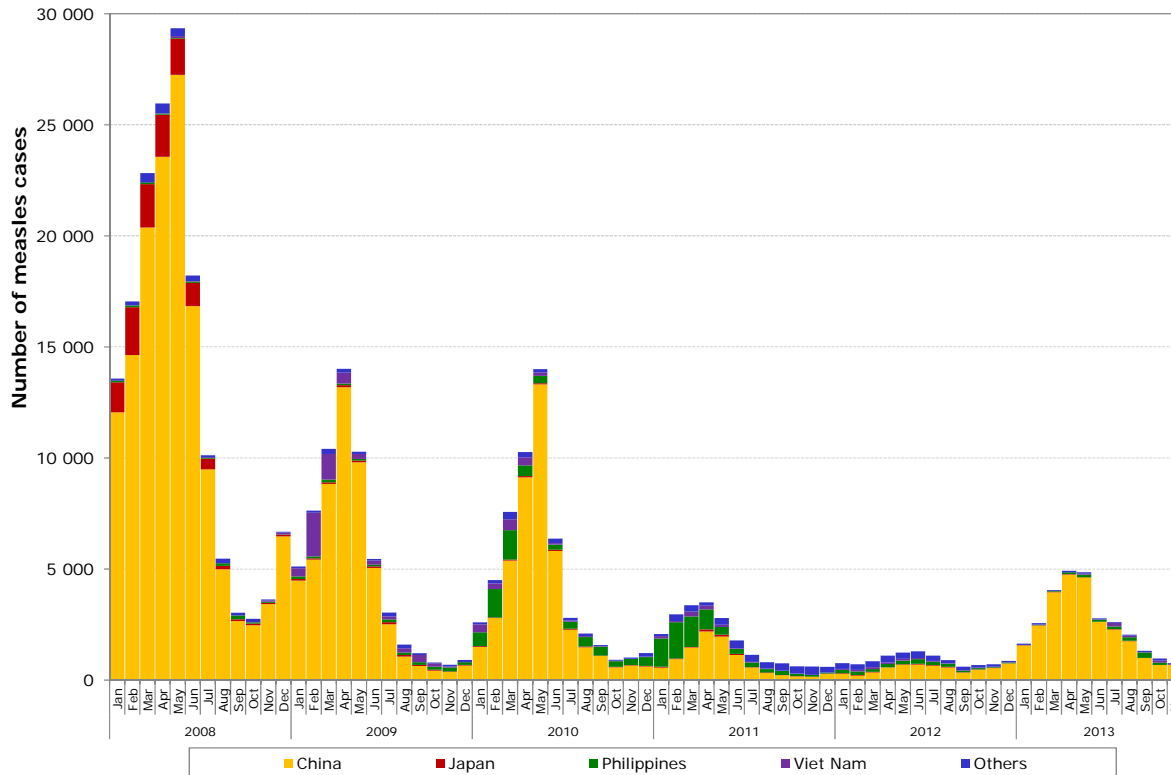


MEASLES-RUBELLA

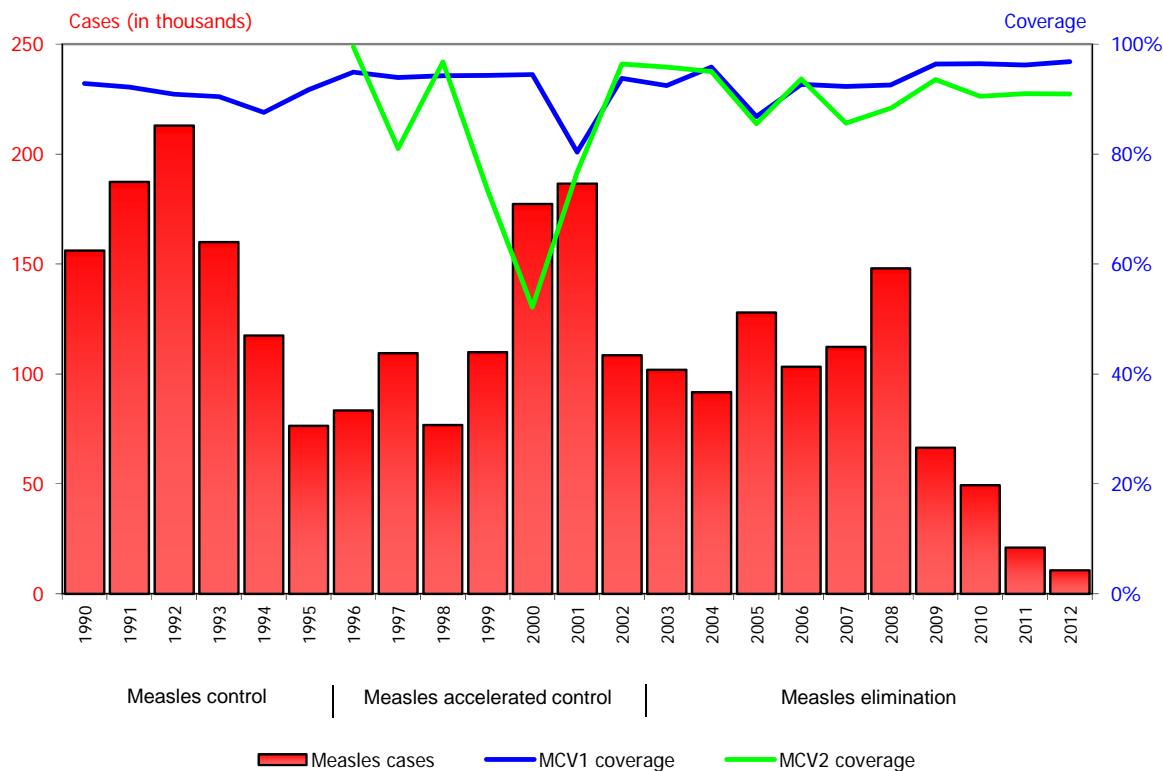


Figure 1. Measles cases by month of onset, WHO Western Pacific Region, 2008–2013¹



Source: Measles and rubella monthly country reports to WHO by 20 December 2013
¹ Includes laboratory confirmed, epi-linked and clinically confirmed cases for 2008–2012

Figure 2. Measles cases and immunization coverage, Western Pacific Region, 1990–2012



Source: WHO-UNICEF Joint Reporting Form (JRF) for Immunization

Table 1. Measles case classification and incidence by country and area, WHO Western Pacific Region, 2009–2013 ¹

Country	2009		2010		2011		2012		2013 ¹										Rash onset of last confirmed measles case
	Total confirmed ²	Measles incidence per 1 million pop.	Total confirmed ²	Measles incidence per 1 million pop.	Total confirmed ²	Measles incidence per 1 million pop.	Total confirmed ²	Measles incidence per 1 million pop.	Population (in millions) ³	Suspected measles cases	Confirmed measles cases			Annualized measles incidence per 1 million	Compatible cases	Discarded cases ⁵	Pending classification	Deaths due to measles	
											Lab	Epi-linked	Total						
Australia	104	5.0	70	3.3	192	8.5	199	8.7	23.21	N/A ⁴	132	4	136	6.4	0	0	0	0	29-Nov-13
Brunei Darussalam	2	5.0	0	0.0	4	9.9	1	2.4	0.42	13	0	0	0	0.0	0	13	0	0	24-Jul-12
Cambodia	865	58.9	1 156	76.8	722	50.5	0	0.0	14.66	532	0	0	0	0.0	0	531	1	0	15-Nov-11
China	52 461	39.5	38 159	28.5	9 943	7.4	6183	4.6	1 359.37	76 342	26 121	239	26 360	21.2	829	48 345	808	27	30-Nov-13
Hong Kong (China)	22	3.0	11	1.6	12	1.7	8	1.1	7.27	198	29	0	29	4.3	4	163	0	0	21-Nov-13
Macao (China)	0	0.0	0	0.0	1	1.8	1	1.8	0.58	19	3	0	3	5.7	0	16	0	0	4-Aug-13
Japan	705	5.5	432	3.4	411	3.2	228	1.8	126.35	1 066	137	2	139	1.2	47	879	1	0	28-Oct-13
Lao People's Democratic Republic	72	12.1	153	23.8	113	18.0	36	5.6	6.46	511	23	45	68	11.5	0	441	2	0	5-May-13
Malaysia	56	2.1	74	2.7	1 603	54.4	1868	63.7	29.79	6 541	169	3	172	6.3	45	5 758	536	0	13-Nov-13
Mongolia	8	3.0	7	2.6	0	0.0	0	0.0	2.89	181	0	0	0	0.0	0	181	0	0	19-Jun-10
New Zealand	253	60.0	48	11.2	599	135.7	55	12.3	4.51	11	1	0	1	0.2	0	2	7	0	2-Mar-13
Papua New Guinea	0	0.0	0	0.0	0	0.0	0	0.0	7.33	93	10	0	10	1.5	0	81	2	0	30-Oct-13
Philippines	1 490	16.6	6 388	68.2	6 555	69.1	1536	15.9	98.11	3 928	851	106	957	10.6	485	2 411	75	9	21-Oct-13
Republic of Korea	17	0.4	111	2.3	43	0.9	2	0.0	48.77	518	110	2	112	2.5	2	384	1	0	23-Oct-13
Singapore	16	3.6	54	11.2	143	27.6	40	7.6	5.30	116	41	0	41	8.4	8	66	0	0	15-Nov-13
Viet Nam	5 222	59.0	1 826	20.5	745	8.4	637	5.9	90.66	1 586	235	252	487	5.9	194	837	68	0	22-Aug-13
Pacific island countries and areas ⁶	4	1.3	1	0.3	2	1.0	0	0.0	3.23	57	0	0	0	0.0	0	56	1	0	27-Nov-13
Western Pacific Region	61 297	34.0	48 490	27.0	21 088	11.7	10 794	5.9	1 828.90	91 712	27 862	653	28 515	17.0	1 614	60 164	1 502	36	

¹ Includes all cases reported to the Western Pacific Regional Office by 20 December 2013.

² Includes laboratory confirmed, epi-linked and clinically confirmed cases for 2009 to 2012.

³ United Nations, Department of Economic and Social Affairs, Population Division World Population Prospects.

⁴ Australia reports confirmed cases only.

⁵ Excludes vaccine-associated cases

⁶ Classification is provisional based on laboratory data only.

Green	<1 confirmed measles case / 1 000 000 population
Yellow	1-9.9 confirmed measles case / 1 000 000 population
Red	>= 10 confirmed cases / 1 000 000 population

Table 2. Measles surveillance performance indicators by country and area, WHO Western Pacific Region, 2012–2013 ¹

Country	2012				2013 ¹			
	Discarded non-measles rate per 100 000 pop	Second level units with ≥ 2 discarded cases per 100 000 pop	Suspected cases with adequate investigation	Suspected cases with adequate blood specimens ²	Annualized discarded non-measles rate per 100 000 pop	Second level units with ≥ 2 discarded cases per 100 000 pop (annualized)	Suspected cases with adequate investigation	Suspected cases with adequate blood specimens ²
	≥ 2	≥ 80%	≥ 80%	≥ 80%	≥ 2	≥ 80%	≥ 80%	≥ 80%
Australia ³	Insufficient data	Insufficient data	Insufficient data	Insufficient data	Insufficient data	Insufficient data	Insufficient data	Insufficient data
Brunei Darussalam	1.5	0.0%	71.4%	85.7%	3.4	100.0%	100.0%	100.0%
Cambodia	6.8	62.5%	56.1%	99.2%	4.0	45.8%	70.9%	97.9%
China	2.3	71.0% ⁴	99.0%	97.9%	3.9	61.3%	94.6%	90.1%
Hong Kong (China)	2.5	100.0%	92.0%	97.3%	2.4	100.0%	99.0%	85.4%
Macao (China)	3.9	100.0%	95.7%	100.0%	3.0	100.0%	42.1%	100.0%
Japan	0.1	0.0%	Insufficient data	Insufficient data	0.8	4.3%	Insufficient data	Insufficient data
Lao People's Democratic Republic	7.6	64.7%	49.3%	76.6%	7.4	52.9%	35.0%	67.6%
Malaysia	22.7	93.8%	74.4%	83.3%	21.1	100.0%	75.4%	73.1%
Mongolia	22.0	31.8%	64.2%	100.0%	6.8	31.8%	80.1%	95.0%
New Zealand	Insufficient data	Insufficient data	Insufficient data	Insufficient data	Insufficient data	Insufficient data	Insufficient data	Insufficient data
Papua New Guinea	0.6	10.0%	61.9%	81.0%	1.2	25.0%	0.0%	51.6%
Philippines	2.1	64.7%	56.5%	79.5%	2.7	52.9%	58.2%	83.0%
Republic of Korea	0.3	0.0%	84.0%	90.4%	0.9	6.3%	60.5%	68.2%
Singapore	Insufficient data	Insufficient data	Insufficient data	Insufficient data	1.4	0.0%	10.3%	19.0%
Viet Nam	0.9	12.5%	44.3%	55.0%	1.0	21.9%	59.7%	47.2%
Pacific island countries and areas	5.7	Insufficient data	0.0%	Insufficient data	1.9	Insufficient data	0.0%	Insufficient data
Western Pacific Region	2.4	35.1%	88.8%	93.1%	3.6	36.1%	90.2%	87.6%

¹ Includes all cases reported to the Western Pacific Regional Office by 20 December 2013.

² Excludes epidemiologically-linked cases.

³ Reports only confirmed cases.

Green
Yellow
Red

Reached or surpassed target

Nearly reached target: 1.00–1.99 for non-measles suspected case rate; 10.1–25% for percent clinically confirmed cases; 60–79% for other indicators

Substantially below target

Table 3A. Measles and rubella laboratory performance, WHO Western Pacific Region, 2012¹

Country	Laboratory	Measles and rubella		Measles											Rubella			
				Serology							Virus detection				Serum and blood (includes DBS)			
		Total number of cases tested	Total number of samples received	Serum			Blood		Results ≤ 7 days	Measles Virus isolation/detection (swab, urine and others)		Measles Reverse Transcription-Polymerase Chain Reaction		Samples tested for rubella IgM		Rubella IgM (+)		Rubella IgM equiv
				No.	No.	%	No.	No. received		No. (+)	%	No. of samples tested	No. of isolates	No. of samples tested	No. of (+)	No.	No.	%
Australia	VIDRL	116	133	14	9	64.3	1	0	-	100.0	0	0	112	108	14	7	50.0	0
Cambodia	NPHL	985	987	872	0	0.0	1	112	0	98.3	0	0	0	0	962	185	19.2	0
China	CCDC																	
Hong Kong (China)	PHLC	489	560	511	6	1.2	8	0	-	98.7	18	3	29	7	470	21	4.5	5
Macao (China)	PHLC	58	58	58	2	3.4	0	0	-	96.6	0	0	0	0	58	3	5.2	0
Japan ²	NIID	362	462	248	142	57.3	39	0	-	No data	214	78	0	0	3	0	0.0	0
Lao People's Democratic Republic	NCLE	396	396	396	7	1.8	6	0	-	73.7	0	0	0	0	396	50	12.6	68
Malaysia	NPHL	9 195	9 644	8 619	1 829	21.2	128	0	-	97.7	1 512	87	0	0	6 732	1 011	15.0	318
Mongolia	NCCD	627	628	606	0	0.0	0	0	-	100.0	2	0	22	0	626	240	38.3	10
New Zealand	CHL	331	362	171	11	6.4	5	0	-	99.3	4	0	165	46	51	5	9.8	2
Papua New Guinea	CPHL	66	66	66	0	0.0	0	0	-	57.6	0	0	0	0	66	24	36.4	8
Philippines	RITM	3 065	3 080	3 048	654	21.5	125	3	0	95.3	62	3	12	2	2 405	131	5.4	147
Republic of Korea	KCDC	243	251	249	18	7.2	15	0	-	100.0	1	0	30	0	242	13	5.4	23
Singapore	SGH	590	781	249	14	5.6	5	0	-	96.9	179	4	0	0	406	23	5.7	14
Viet Nam (northern)	NIHE, Nha Trang	563	563	483	5	1.0	9	0	-	82.3	0	0	0	0	563	97	17.2	35
Viet Nam (southern)	PI	349	370	349	1	0.3	1	0	-	97.7	21	0	21	0	349	24	6.9	19
Fiji	Mataika House	182	183	181	0	0.0	1	2	0	93.4	0	0	0	0	183	25	13.7	9
Samoa	VIDRL	10	16	5	0	0.0	0	0	-	No data	0	0	0	0	9	0	0.0	0
Solomon Islands	VIDRL	10	10	4	0	0.0	0	0	-	No data	0	0	0	0	10	3	30.0	3
Total		17 637	18 550	16 129	2 698	16.7	344	117	0	96.0	2 013	175	391	163	13 545	1 862	13.7	661

¹ National measles laboratory monthly reports received in the Western Pacific Regional Office by 20th of January 2013

² Data from the national measles surveillance report received in the Western Pacific Regional Office by 20th of January 2013

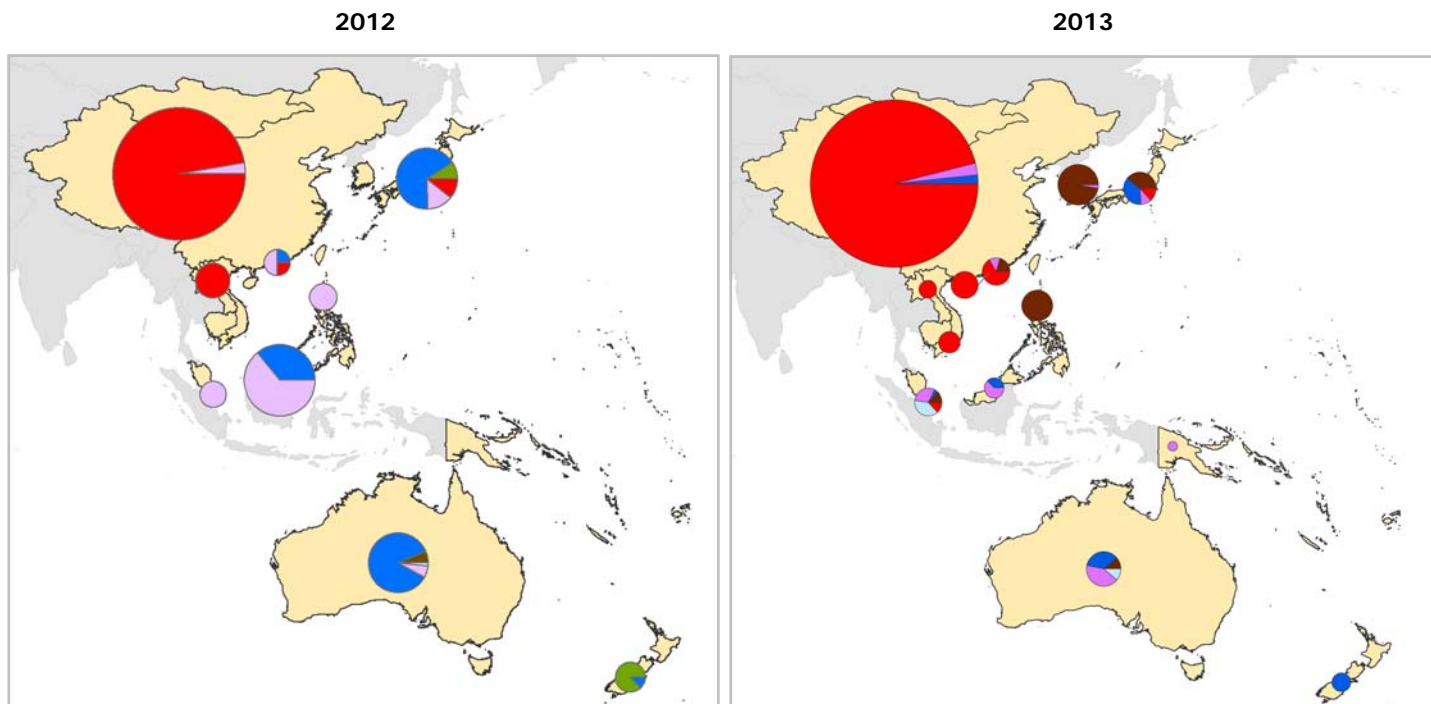
Table 3B. Measles and rubella laboratory performance, WHO Western Pacific Region, 2013¹

Country	Laboratory	Measles and rubella		Measles												Rubella			
				Serology								Virus detection				Serum and blood (includes DBS)			
		Total number of cases tested	Total number of samples received	Serum			Blood		Timeliness of results		Measles Virus isolation/detection (swab, urine and others)		Measles Reverse Transcription-Polymerase Chain Reaction		Samples tested for rubella IgM	Rubella IgM (+)		Rubella IgM equiv	
				Samples tested for measles IgM	Measles IgM (+)	Measles IgM equiv	DBS samples	<4 days ²	<7 days	No. of samples tested	No. of isolates	No. of samples tested	No. of (+)	No.		No.	%		No.
No.	No.	%	No.	No. received	No. (+)	%	%	No. of samples tested	No. of isolates	No. of samples tested	No. of (+)	No.	No.	%	No.				
Australia	VIDRL	80	112	34	22	64.7	0	0	-	100.0	100.0	0	0	82	66	12	2	16.7	0
Brunei Darussalam	DLS	30	30	29	0	0.0	1	0	-	91.3	100.0	0	0	0	0	28	1	3.6	0
Cambodia	NPHL	537	537	478	0	0.0	0	59	0	76.0	81.9	0	0	0	0	537	105	19.6	0
China	CCDC																		
Hong Kong (China)	PHLC	577	673	633	22	3.5	10	0	-	90.9	98.2	21	11	55	35	573	8	1.4	13
Macao (China)	PHLC	41	41	41	4	9.8	1	0	-	100.0	100.0	0	0	0	0	41	0	0.0	0
Japan	NIID	1 090	1 090	464	119	25.6	0	0	-	No data	No data	0	0	678	104	37	16	43.2	1
Lao People's Democratic Republic	NCLE	351	367	351	29	8.3	20	0	-	82.8	96.0	0	0	0	0	351	18	5.1	45
Malaysia	NPHL	7 170	7 368	5 879	220	3.7	60	0	-	58.9	90.9	1 441	10	0	0	6 412	786	12.3	216
Mongolia	NCCD	181	181	181	0	0.0	0	0	-	99.4	99.4	0	0	0	0	181	8	4.4	7
New Zealand	CHL	143	158	101	3	3.0	3	0	-	44.8	98.2	1	0	43	2	85	4	4.7	1
Papua New Guinea	CPHL	75	75	70	6	8.6	0	3	0	16.7	84.4	0	0	12	2	74	4	5.4	2
Philippines	RITM	4 842	4 848	4 640	1 563	33.7	218	100	15	81.2	89.5	273	70	32	6	4 731	105	2.2	159
Republic of Korea	KCDC	605	795	498	103	20.7	44	0	-	64.2	92.0	63	63	365	94	484	26	5.4	20
Singapore	SGH	392	564	177	12	6.8	6	0	-	84.2	98.8	171	5	0	0	264	16	6.1	9
Viet Nam (northern)	NIHE, Nha Trang	830	831	830	164	19.8	20	0	-	86.6	95.1	8	0	36	21	830	19	2.3	22
Viet Nam (southern)	PI	214	223	214	4	1.9	2	0	-	84.6	98.1	9	0	9	0	214	2	0.9	4
Fiji	Mataika House	43	44	43	0	0.0	0	0	-	83.3	92.9	0	0	0	0	48	4	8.3	0
Samoa	VIDRL	3	3	3	0	0.0	0	0	-	0.0	100.0	0	0	0	0	1	0	0.0	0
Solomon Islands	VIDRL	4	4	0	-	-	-	0	-	0.0	100.0	0	0	0	0	4	1	25.0	0
Total		17 208	17 944	14 666	2 271	15.5	385	162	15	71.2	91.3	1 987	159	1 312	330	14 907	1 125	7.5	499

¹ National measles laboratory monthly reports received in the Western Pacific Regional Office by 20th of December 2013

² Recommendation from the Fourth Meeting on Vaccine Preventable Diseases Laboratory Networks in the Western Pacific Region

Figure 3. Measles genotype distribution of cases with onset in 2012 and 2013, WHO Western Pacific Region



* Size of the pie chart is proportional to the number of genotypes reported by the country

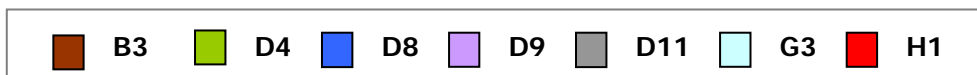


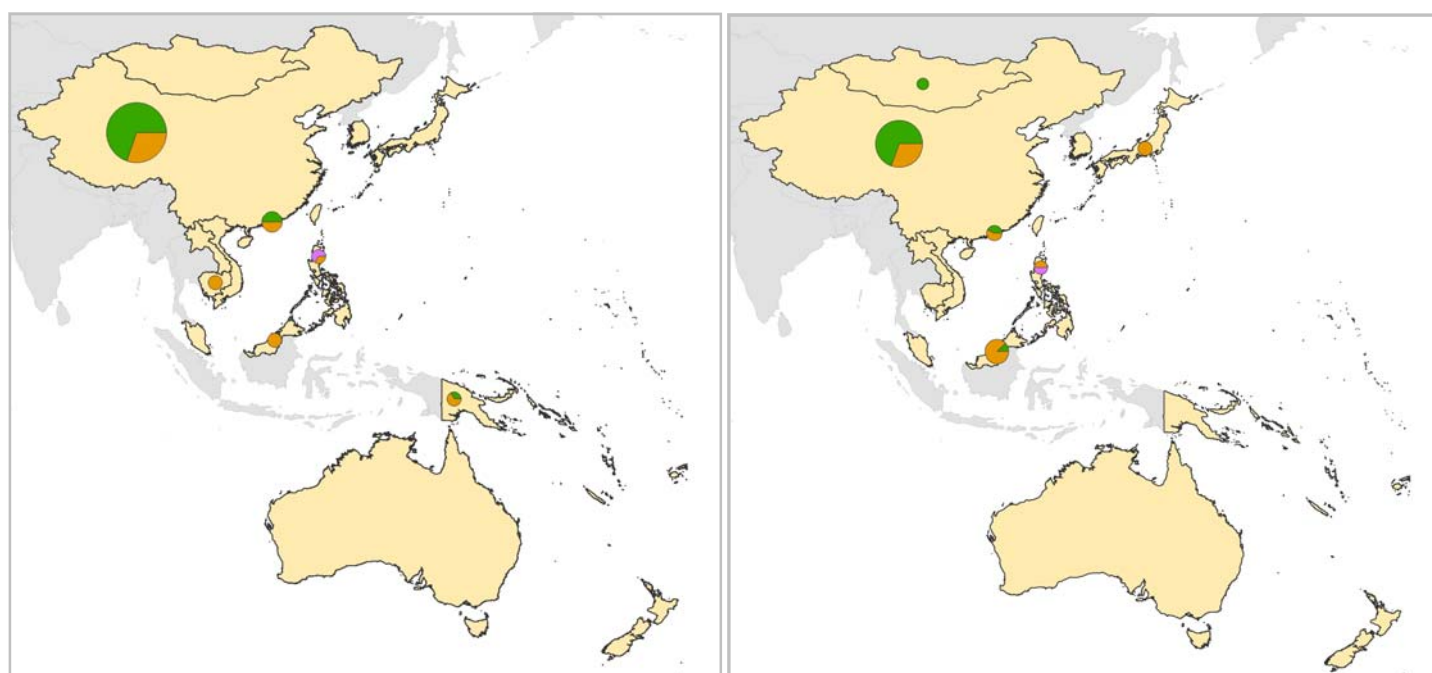
Table 4. Measles genotype distribution of cases with onset in 2012 and 2013, WHO Western Pacific Region

Country	2012									2013								
	B3	D4	D8	D9	D11	G3	H1	A	Total	B3	D4	D8	D9	D11	G3	H1	A	Total
Australia	8	-	112	8	-	1	-	5	134	5	-	16	19	-	5	-	8	53
Brunei Darussalam	-	-	-	-	-	-	-	-	0	-	-	-	-	-	-	-	-	0
Cambodia	-	-	-	-	-	-	-	-	0	-	-	-	-	-	-	-	-	0
China	-	-	1	13	-	-	449	6	469	-	-	37	48	-	-	2054	15	2154
Hong Kong (China)	-	-	1	2	-	-	2	1	6	5	-	-	3	-	-	16	-	24
Macao (China)	-	-	-	-	-	-	-	-	0	-	-	-	-	-	-	3	-	3
Japan	-	6	44	9	-	-	7	2	68	15	-	14	4	-	-	5	6	44
Lao People's Democratic Republic	-	-	-	-	-	-	13	-	13	-	-	-	-	-	-	5	-	5
Malaysia	-	-	36	64	-	-	-	-	100	-	-	3	5	-	-	-	-	8
Mongolia	-	-	-	-	-	-	-	-	0	-	-	-	-	-	-	-	-	0
New Zealand	-	7	1	-	-	-	-	2	10	-	-	1	-	-	-	-	-	1
Papua New Guinea	-	-	-	-	-	-	-	-	0	-	-	-	1	-	-	-	-	1
Philippines	-	-	-	5	-	-	-	-	5	33	-	-	-	-	-	-	-	33
Republic of Korea	-	-	-	-	-	-	-	-	0	67	-	-	2	-	-	-	6	75
Singapore	-	-	-	4	-	-	-	-	4	3	-	1	7	-	9	3	1	24
Viet Nam	-	-	-	-	-	-	-	-	0	-	-	-	-	-	-	11	-	11
Pacific island countries and areas	-	-	-	-	-	-	-	-	0	-	-	-	-	-	-	-	-	0
Total	8	13	195	105	0	1	471	16	809	128	0	72	89	0	14	2097	36	2436

Sources: National and regional measles reference laboratory monthly reports from November 2013 and the Measles Nucleotide Sequence online database (MeaNS).

The boundaries and names shown and the designations used on the maps do not imply the expression of any opinion whatsoever on the part of the World Health Organization concerning the legal status of any country, territory, city or area or of its authorities, or concerning the delimitation of its frontiers or boundaries. Dotted lines on maps represent approximate border lines for which there may not yet be full agreement.
© WHO Regional Office for the Western Pacific 2009. All rights reserved.

Figure 4. Rubella genotype distribution of cases with onset in 2012 and 2013, WHO Western Pacific Region



* Size of the pie chart is proportional to the number of genotypes reported by the country



Table 5. Rubella genotype distribution of cases with onset in 2012 and 2013, WHO Western Pacific Region

Country	2012				2013			
	1E	1j	2B	Total	1E	1j	2B	Total
Australia	-	-	-	-	-	-	-	-
Brunei Darussalam	-	-	-	-	-	-	-	-
Cambodia	-	-	3	3	-	-	-	-
China	199	-	89	288	57	-	25	82
Hong Kong (China)	8	-	8	16	3	-	4	7
Macao (China)	-	-	-	-	-	-	-	-
Japan	-	-	1	1	-	-	3	3
Lao People's Democratic Republic	-	-	-	-	-	-	-	-
Malaysia	-	-	3	3	3	-	22	25
Mongolia	-	-	-	-	2	-	-	2
New Zealand	-	-	-	-	-	-	-	-
Papua New Guinea	1	-	2	3	-	-	-	-
Philippines	-	2	1	3	-	2	2	4
Republic of Korea	-	-	-	-	-	-	-	-
Singapore	-	-	-	-	-	-	-	-
Viet Nam	-	-	1	1	-	-	-	-
Pacific island countries and areas	-	-	-	-	-	-	-	-
Total	208	2	108	318	65	2	56	123

Sources: National and regional measles reference laboratory monthly reports from November 2013 and the Measles Nucleotide Sequence online database (MeaNS).

The boundaries and names shown and the designations used on the maps do not imply the expression of any opinion whatsoever on the part of the World Health Organization concerning the legal status of any country, territory, city or area or of its authorities, or concerning the delimitation of its frontiers or boundaries. Dotted lines on maps represent approximate border lines for which there may not yet be full agreement.
© WHO Regional Office for the Western Pacific 2009. All rights reserved.

Table 6A. Completeness and timeliness of epidemiologic reporting, WHO Western Pacific Region, 2011–2013

Country	2011		2012		2013 ¹											Completeness ²	Timeliness ³
	Completeness	Timeliness	Completeness	Timeliness	Jan	Feb	Mar	Apr	May	Jun	Jul	Aug	Sep	Oct	Nov		
					10 Feb	10 Mar	10 Apr	10 May	10 Jun	10 Jul	10 Aug	10 Sep	10 Oct	10 Nov	10 Dec		
Australia	100%	100%	100%	100%	07 Feb	06 Mar	05 Apr	09 May	07 Jun	08 Jul	10 Aug	10 Sep	10 Oct	08 Nov	10 Dec	100%	100%
Brunei Darussalam	100%	100%	100%	100%	10 Feb	09 Mar	08 Apr	07 May	08 Jun	08 Jul	07 Aug	10 Sep	08 Oct	06 Nov	09 Dec	100%	100%
Cambodia	75%	42%	100%	92%	10 Feb	10 Mar	10 Apr	10 May	10 Jun	10 Jul	10 Aug	10 Sep	10 Oct	10 Nov	10 Dec	100%	100%
China	100%	100%	100%	83%	13 Feb	13 Mar	16 Apr	16 May	15 Jun	15 Jul	13 Aug	10 Sep	15 Oct	10 Nov	15 Dec	100%	82%
Hong Kong (China)	100%	100%	100%	100%	08 Feb	07 Mar	09 Apr	10 May	10 Jun	10 Jul	09 Aug	10 Sep	10 Oct	08 Nov	07 Dec	100%	100%
Macao (China)	100%	100%	100%	100%	05 Feb	04 Mar	03 Apr	08 May	06 Jun	05 Jul	05 Aug	09 Sep	08 Oct	05 Nov	10 Dec	100%	100%
Japan	100%	100%	100%	100%	13 Feb	08 Mar	10 Apr	13 May	10 Jun	10 Jul	08 Aug	10 Sep	10 Oct	10 Nov	10 Dec	100%	82%
Lao People's Democratic Republic	92%	92%	100%	75%	06 Feb	10 Mar	10 Apr	03 May	10 Jun	17 Jul	08 Aug	10 Sep	10 Oct	05 Nov	10 Dec	100%	100%
Malaysia	100%	92%	100%	92%	09 Feb	08 Mar	09 Apr	10 May	05 Jun	08 Jul	06 Aug	09 Sep	09 Oct	08 Nov	09 Dec	100%	100%
Mongolia	100%	100%	100%	100%	08 Feb	07 Mar	09 Apr	09 May	07 Jun	09 Jul	06 Aug	09 Sep	09 Oct	08 Nov	09 Dec	100%	100%
New Zealand	100%	83%	100%	83%	08 Feb	08 Mar	08 Apr	10 Jun	10 Jun	08 Jul	08 Aug	06 Sep	08 Oct	07 Nov	09 Dec	100%	91%
Papua New Guinea	75%	42%	83%	33%	08 Feb	05 Mar	10 Apr	09 May	07 Jun	04 Jul	18 Aug	07 Sep	09 Oct	07 Nov	10 Dec	100%	91%
Philippines	100%	92%	100%	100%	08 Feb	10 Mar	09 Apr	02 May	10 Jun	10 Jul	09 Aug	10 Sep	09 Oct	09 Nov	29 Nov	100%	100%
Republic of Korea	100%	92%	100%	100%	07 Feb	08 Mar	05 Apr	10 May	10 Jun	10 Jul	08 Aug	09 Sep	10 Oct	07 Nov	09 Dec	100%	100%
Singapore	100%	92%	100%	100%	04 Feb	05 Mar	04 Apr	07 May	04 Jun	05 Jul	05 Aug	09 Sep	08 Oct	08 Nov	02 Dec	100%	100%
Viet Nam	75%	50%	100%	92%	10 Feb	10 Mar	10 Apr	10 May	10 Jun	10 Jul	10 Aug	10 Sep	10 Oct	10 Nov	10 Dec	100%	100%
Pacific island countries and areas	75%	67%	100%	100%	06 Feb	05 Mar	08 Apr	02 May	05 Jun	03 Jul	08 Aug	02 Sep	04 Oct	07 Nov	03 Dec	100%	100%
Completeness	95%		99%		100%	100%	100%	100%	100%	100%	100%	100%	100%	100%	100%	100%	100%
Timeliness		89%		92%	94%	100%	94%	82%	100%	94%	94%	100%	100%	100%	100%		96%

¹ National measles surveillance monthly reports from November 2013.

Legend: black = timely report; red = untimely report

² Completeness is defined as the number of reports received by the end of the reporting month divided by the number of expected reports for the year.

³ Countries and areas should submit reports by the 10th (or the next working day) of the following month; Pacific island countries and areas and China may report to the Regional Office by the 15th (or the next working day) of the following month.

Table 6B. Completeness and timeliness of laboratory reporting, WHO Western Pacific Region, 2011–2013

Country	2011		2012		2013 ¹											Completeness ²	Timeliness ⁴
	Completeness	Timeliness	Completeness	Timeliness	Jan	Feb	Mar	Apr	May	Jun	Jul	Aug	Sep	Oct	Nov		
					10 Feb	10 Mar	10 Apr	10 May	10 Jun	10 Jul	10 Aug	10 Sep	10 Oct	10 Nov	10 Dec		
Australia	100%	100%	100%	100%	05 Feb	01 Mar	09 Apr	01 May	04 Jun	01 Jul	02 Aug	05 Sep	08 Oct	04 Nov	06 Dec	100%	100%
Brunei Darussalam ⁴								07 May	10 Jun	11 Jul	06 Aug	09 Sep	01 Oct	10 Nov	30 Nov	100%	88%
Cambodia	100%	100%	100%	100%	08 Feb	10 Mar	10 Apr	09 May	07 Jun	10 Jul	10 Aug	10 Sep	10 Oct	10 Nov	10 Dec	100%	100%
China	0%	0%	17%	17%	09 Feb	01 Mar	07 Apr	02 May	08 Jun	10 Jul	02 Aug	10 Sep	10 Oct	08 Nov	10 Dec	100%	100%
Hong Kong (China)	100%	100%	100%	100%	08 Feb	08 Mar	09 Apr	09 May	08 Jun	09 Jul	08 Aug	10 Sep	09 Oct	08 Nov	09 Dec	100%	100%
Macao (China)	100%	100%	100%	100%	07 Feb	05 Mar	04 Apr	03 May	07 Jun	08 Jul	02 Aug	10 Sep	08 Oct	06 Nov	03 Dec	100%	100%
Japan	100%	100%	100%	100%	08 Feb	08 Mar	10 Apr	08 May	10 Jun	10 Jul	08 Aug	10 Sep	10 Oct	10 Nov	10 Dec	100%	100%
Lao People's Democratic Republic	100%	100%	100%	92%	08 Feb	10 Mar	10 Apr	09 May		10 Jul	10 Aug	06 Sep	03 Oct	06 Nov	09 Dec	91%	91%
Malaysia	100%	100%	100%	58%	08 Feb	05 Mar	09 Apr	10 May	10 Jun	10 Jul	16 Aug	09 Sep	10 Oct	09 Nov	10 Dec	100%	100%
Mongolia	100%	100%	100%	100%	07 Feb	08 Mar	05 Apr	06 May	05 Jun	05 Jul	05 Aug	05 Sep	04 Oct	06 Nov	03 Dec	100%	100%
New Zealand	100%	92%	100%	100%	08 Feb	07 Mar	09 Apr	10 May	10 Jun	08 Jul	08 Aug	06 Sep	08 Oct	07 Nov	10 Dec	100%	100%
Papua New Guinea	83%	67%	92%	50%	10 Feb	08 Mar		08 May	07 Jun	10 Jul	06 Aug	06 Sep	08 Oct		05 Dec	82%	82%
Philippines	100%	100%	100%	92%	06 Feb	08 Mar	10 Apr	07 May	10 Jun	09 Jul	08 Aug	09 Sep	04 Oct	08 Nov	10 Dec	100%	100%
Republic of Korea	100%	100%	100%	100%	08 Feb	08 Mar	09 Apr	10 May	07 Jun	09 Jul	10 Aug	09 Sep	10 Oct	08 Nov	09 Dec	100%	100%
Singapore	100%	100%	100%	100%	08 Feb	08 Mar	09 Apr	09 May	06 Jun	09 Jul	09 Aug	09 Sep	07 Oct	04 Nov	05 Dec	100%	100%
Viet Nam (northern)	100%	75%	92%	83%	07 Feb	12 Mar	07 Apr	12 May	10 Jun	11 Jul	08 Aug	12 Sep	10 Oct	12 Nov	13 Dec	100%	73%
Viet Nam (southern)	100%	100%	83%	83%	09 Feb	08 Mar	10 Apr	09 May	07 Jun	10 Jul	22 Aug	11 Sep	11 Oct	12 Nov		91%	64%
Fiji	92%	58%	100%	100%	06 Feb	05 Mar	08 Apr	02 May	05 Jun	03 Jul	08 Aug	02 Sep	04 Oct	07 Nov	03 Dec	100%	100%
Completeness	93%		93%		100%	100%	94%	100%	94%	100%	100%	100%	100%	94%	94%	90%	
Timeliness		88%		87%	100%	94%	94%	94%	100%	94%	94%	94%	100%	88%	94%		84%

¹ National measles laboratory monthly reports from November 2013.

² Completeness is defined as the number of reports received by the end of the reporting month divided by the number of expected reports for the year.

³ National measles and rubella laboratories should submit monthly reports by the 10th (or the next working day) of the following month.

⁴ Brunei Darussalam joined WHO accreditation programme from April 2013

**Expanded Programme on Immunization
Regional Office for the Western Pacific
World Health Organization**

P.O. Box 2932, 1000 Manila, Philippines
Tel. No. (63 2) 5288001
Fax No. (63 2) 5211036, 5260279

Please send your comments and monthly data before the 10th of the month to:
WPR_EPI_data@wpro.who.int