

## HIGHLIGHTS

### Nigeria One Year Without Polio Cases

On 24 July, Nigeria marked one year since the most recent case of wild poliovirus. This progress is thanks to hard work by the Nigerian government, thousands of health workers, countless community and religious leaders across the country and international partners. Nigeria's milestone is an important step toward a polio-free world, but the job is not yet finished. For Nigeria to come off the list of polio-endemic countries, another six weeks are needed for the samples currently in the laboratory to be processed and confirmed to be polio-free. The country must then go two more years without a wild polio case and with very strong surveillance before the World Health Organization's entire African Region can be certified polio-free. To get there, Nigeria must remain vigilant in improving surveillance and vaccinating all children. More information is available at <http://www.polioeradication.org>.

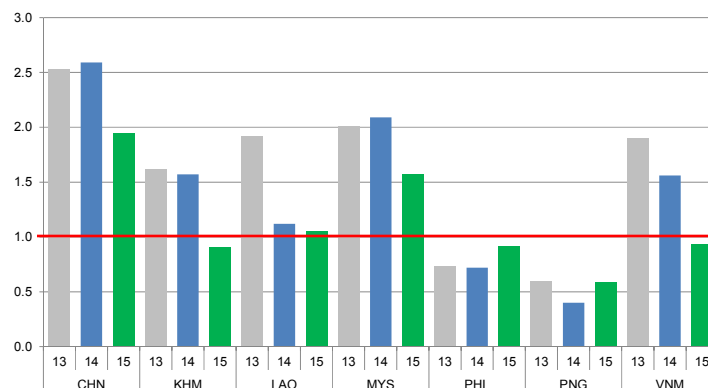


WHO/T. Moran

## CONTACT US

Expanded Programme on Immunization  
Regional Office for the Western Pacific  
World Health Organization  
P.O. Box 2932, 1000 Manila, Philippines  
Phone: +63 2 5288001  
Fax: +63 2 5211036, 5260279  
Email: [WPR\\_EPIdata@wpro.who.int](mailto:WPR_EPIdata@wpro.who.int)  
Web: [www.wpro.who.int/immunization](http://www.wpro.who.int/immunization)

Chart 1. Non-polio AFP rate (per 100 000 persons < 15 years of age), 2013–2015\*



\* AFP rate annualized as of week 31

Chart 2. Adequate specimen collection rate, 2013–2015

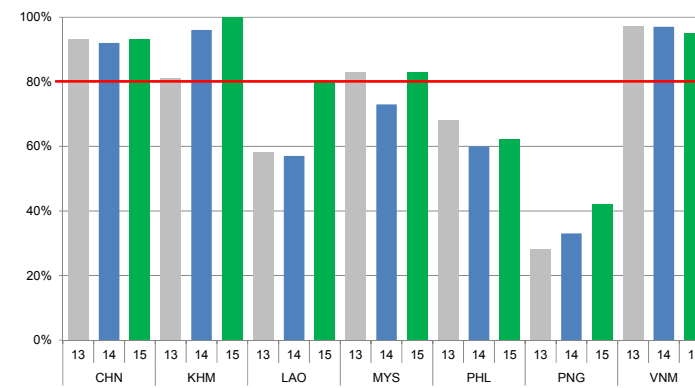


Chart 3. Percentage of reported AFP cases by number of polio vaccination doses, 2015

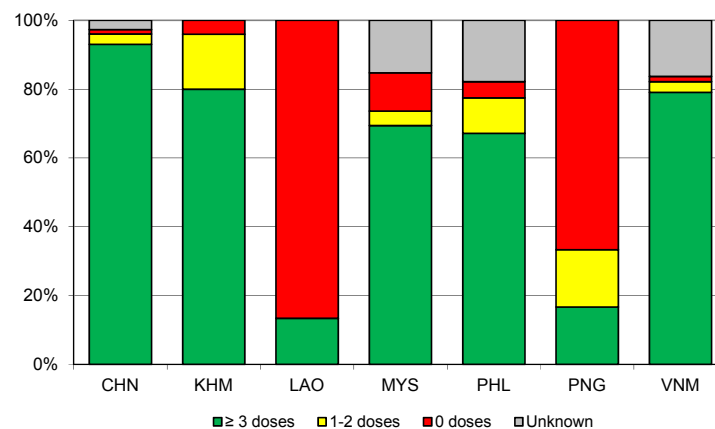
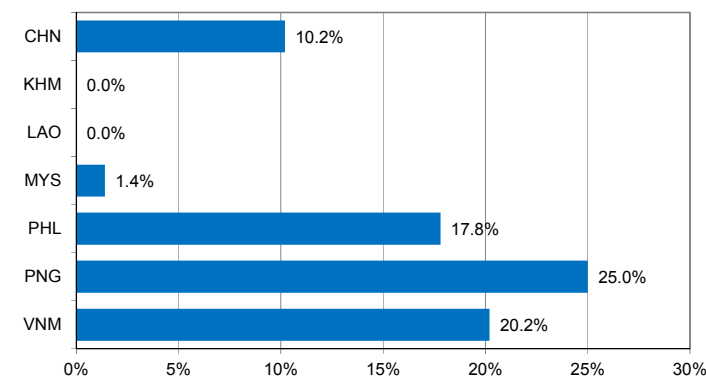


Chart 4. Percentage of reported AFP cases with pending classification > 90 days after onset, 2015



Note: Priority countries were selected for the charts. Official WHO acronyms have been used for abbreviation: CHN (China), KHM (Cambodia), LAO (Lao People's Democratic Republic), MYS (Malaysia), PHL (Philippines), PNG (Papua New Guinea), and VNM (Viet Nam).

Table 1A. Classification of AFP cases with onset in 2014 and key surveillance indicators

	2013		2014												
	Total reported cases	Annual expected cases <15 years of age	Total reported cases	Classification						Indicators				Latest report date <sup>5</sup>	Days since last report <sup>6</sup>
				Confirmed wild poliovirus	Vaccine-derived poliovirus (VDPV)	Polio-compatible	Discarded (Non-polio)	Pending		Non-polio AFP rate	% with adequate specimens <sup>2</sup>	% investigated ≤ 2 days of notification <sup>3</sup>	% with 60-day follow-up <sup>4</sup>		
								Total	> 90 days <sup>1</sup> # (%)						≥ 1
Australia	62	44	60	0	0	2	58	0	0 (0.0%)	1.36	50%	83%	0%	07-Apr-15	-
Brunei Darussalam	1	1	4	0	0	0	4	0	0 (0.0%)	4.00	75%	100%	100%	07-Apr-15	-
Cambodia	73	46	72	0	0	0	72	0	0 (0.0%)	1.57	96%	93%	100%	14-May-15	-
China	5623	2225	5758	0	2	0	5756	0	0 (0.0%)	2.59	92%	100%	96%	13-May-15	-
China, Hong Kong SAR	12	8	19	0	0	0	19	0	0 (0.0%)	2.38	89%	100%	100%	05-Mar-15	-
China, Macao SAR	1	1	1	0	0	0	1	0	0 (0.0%)	1.00	0%	100%	100%	13-Jan-15	-
Japan	0	167	0	-	-	-	-	-	-	-	-	-	-	-	-
Lao People's Democratic Republic	48	25	28	0	0	0	28	0	0 (0.0%)	1.12	57%	93%	83%	27-Apr-15	-
Malaysia	155	77	161	0	0	0	161	0	0 (0.0%)	2.09	73%	87%	100%	10-Mar-15	-
Mongolia	7	8	9	0	0	0	9	0	0 (0.0%)	1.13	89%	100%	100%	05-Mar-15	-
New Zealand	12	9	8	0	0	0	8	0	0 (0.0%)	0.89	38%	100%	80%	11-Mar-15	-
Papua New Guinea	18	30	12	0	0	0	12	0	0 (0.0%)	0.40	33%	75%	0%	07-Apr-15	-
Philippines	277	378	272	0	1	0	271	0	0 (0.0%)	0.72	60%	97%	6%	26-Jun-15	-
Republic of Korea	84	72	88	0	0	0	88	0	0 (0.0%)	1.22	86%	98%	100%	16-Feb-15	-
Singapore	7	6	8	0	0	0	8	0	0 (0.0%)	1.33	75%	88%	100%	07-Jan-15	-
Viet Nam	459	231	361	0	0	0	361	0	0 (0.0%)	1.56	97%	93%	100%	14-Apr-15	-
Pacific island countries and areas	8	10	15	0	0	0	10	5	5 (33.3%)	1.50	67%	93%	80%	30-Jun-15	34
<b>Total</b>	<b>6847</b>	<b>3338</b>	<b>6876</b>	<b>0</b>	<b>3</b>	<b>2</b>	<b>6866</b>	<b>5</b>	<b>5 (0.1%)</b>	<b>2.06</b>	<b>90%</b>	<b>99%</b>	<b>77%</b>		

1. Number (%) of reported cases pending classification more than 90 days from date of onset of paralysis to date of last report
2. Percentage of reported cases with two stool specimens collected 24 hours apart and within 14 days of onset of paralysis
3. Percentage of reported cases investigated within two days of notification
4. Percentage of reported cases with inadequate specimens for which the 60-day follow-up evaluation has been completed
5. Report date is fixed as soon as all cases for the year have been classified
6. Countries are expected to submit data at least once per month to WPRO

Green	Reached or surpassed target
Yellow	Nearly reached target: 0.5–0.99 for non-polio AFP rate; 60–79% for other indicators
Red	Substantially below target

Table 1B. Classification of AFP cases with onset in 2015 and key surveillance indicators

	2014		2015												
	Total reported cases	Annual expected cases <15 years of age	Total reported cases	Classification						Indicators				Latest report date	Days since last report <sup>6</sup>
				Confirmed wild poliovirus	Vaccine-derived poliovirus (VDPV)	Polio-compatible	Discarded (Non-polio)	Pending		Non-polio AFP rate <sup>2</sup>	% with adequate specimens <sup>3</sup>	% investigated ≤ 2 days of notification <sup>4</sup>	% with 60-day follow-up <sup>5</sup>		
								Total	> 90 days <sup>1</sup> # (%)						
Australia	60	44	25	0	0	0	13	12	1 (4.0%)	0.95	24%	100%	0%	31-Jul-15	3
Brunei Darussalam	4	1	2	0	0	0	2	0	0 (0.0%)	3.35	100%	100%	-	13-Jul-15	21
Cambodia	72	46	25	0	0	0	19	6	0 (0.0%)	0.91	100%	100%	-	07-Jul-15	27
China	5758	2234	2595	0	0	0	1554	1041	265 (10.2%)	1.95	93%	100%	70%	29-Jul-15	5
China, Hong Kong SAR	19	8	7	0	0	0	7	0	0 (0.0%)	1.47	86%	100%	100%	03-Jul-15	31
China, Macao SAR	1	1	1	0	0	0	1	0	0 (0.0%)	1.68	100%	100%	-	15-Jul-15	19
Japan	0	163	0	-	-	-	-	-	-	-	-	-	-	-	-
Lao People's Democratic Republic	28	24	15	0	0	0	13	2	0 (0.0%)	1.05	80%	93%	67%	29-Jun-15	35
Malaysia	161	77	72	0	0	0	55	17	1 (1.4%)	1.57	83%	68%	42%	20-Jul-15	14
Mongolia	9	9	5	0	0	0	3	2	0 (0.0%)	0.93	100%	100%	-	02-Jul-15	32
New Zealand	8	9	3	0	0	0	0	3	1 (33.3%)	0.56	33%	100%	0%	30-Jun-15	34
Papua New Guinea	12	34	12	0	0	0	6	6	3 (25.0%)	0.59	42%	75%	0%	10-Jul-15	24
Philippines	272	387	213	0	0	0	90	123	38 (17.8%)	0.92	62%	98%	8%	16-Jul-15	18
Republic of Korea	88	70	41	0	0	0	35	6	0 (0.0%)	0.98	83%	100%	86%	15-Jul-15	19
Singapore	8	6	4	0	0	0	4	0	0 (0.0%)	1.12	100%	100%	-	06-Jul-15	28
Viet Nam	361	231	129	0	0	0	39	90	26 (20.2%)	0.94	95%	97%	0%	29-Jun-15	35
Pacific island countries and areas	15	10	1	0	0	0	1	0	0 (0.0%)	0.17	100%	100%	-	30-Jun-15	34
<b>Total</b>	<b>6876</b>	<b>3354</b>	<b>3150</b>	<b>0</b>	<b>0</b>	<b>0</b>	<b>1842</b>	<b>1308</b>	<b>335 (10.6%)</b>	<b>1.58</b>	<b>90%</b>	<b>99%</b>	<b>46%</b>		

- Number (%) of reported cases pending classification more than 90 days from date of onset of paralysis to date of last report
- Annualized non-polio AFP rate per 100 000 population under 15 years of age
- Percentage of reported cases with two stool specimens collected 24 hours apart and within 14 days of onset of paralysis
- Percentage of reported cases investigated within two days of notification
- Percentage of reported cases with inadequate specimens for which the 60-day follow-up evaluation has been completed
- Countries are expected to submit data at least once per month to WPRO

Green	Reached or surpassed target
Yellow	Nearly reached target: 0.5–0.99 for non-polio AFP rate; 60–79% for other indicators
Red	Substantially below target



Table 2B. Laboratory investigation of AFP cases with onset in 2015 and key laboratory indicators

Country	National polio laboratory	Total no. of AFP cases with specimens	Virus isolation results							% specimens positive for NPEV	Latest report date	Intratype differentiation/Sequencing lab <sup>1</sup>	No. of isolates received	Intratype differentiation (ITD)/sequencing results																	
			L20B positive	L20B positive + NPEV	NPEV only	Negative	Pending ≤ 14 days	Pending > 14 days	% results reported ≤ 14 days <sup>2</sup>					Type 1			Type 2			Type 3			NPEV <sup>3</sup>	Pending ITD	Discordant pending sequencing	% ITD results reported ≤ 7 days of receipt ≥ 80%					
														Wild	Sabin	VDPV	Wild	Sabin	VDPV	Wild	Sabin	VDPV									
Australia	VIDRL	21	0	0	0	18	3	0	86%	0%	31-Jul-15	VIDRL	0	-	-	-	-	-	-	-	-	-	-	-	-	-	-	-	-	-	-
Brunei Darussalam	VIDRL	2	0	0	0	2	0	0	100%	0%	31-Jul-15	VIDRL	0	-	-	-	-	-	-	-	-	-	-	-	-	-	-	-	-	-	-
Cambodia	NIID	26	0	0	4	22	0	0	88%	15%	31-Jul-15	NIID	0	-	-	-	-	-	-	-	-	-	-	-	-	-	-	-	-	-	-
China		2566	37	0	210	2272	2	45	96%	7%	29-Jul-15		93	0	31	1	0	31	4	0	26	0	0	0	0	0	0	0	0	0	94%
China, Anhui	Prov. Lab	142	2	0	9	128	0	3	95%	6%		Prov. Lab/CCDC	4	0	1	0	0	1	0	0	2	0	0	0	0	0	0	0	0	100%	
China, Beijing	Prov. Lab	16	0	0	0	16	0	0	100%	0%		Prov. Lab/CCDC	4	0	1	0	0	2	0	0	1	0	0	0	0	0	0	0	0	33%	
China, Fujian	Prov. Lab	75	2	0	18	55	0	0	97%	23%		Prov. Lab/CCDC	5	0	0	0	0	3	0	0	2	0	0	0	0	0	0	0	0	100%	
China, Gansu	Prov. Lab	44	0	0	5	38	0	1	100%	7%		Prov. Lab/CCDC	0	-	-	-	-	-	-	-	-	-	-	-	-	-	-	-	-	-	
China, Guangdong	Prov. Lab	150	7	0	8	132	0	3	97%	5%		Prov. Lab/CCDC	23	0	4	0	0	10	2	0	7	0	0	0	0	0	0	0	0	100%	
China, Guangxi	Prov. Lab	136	1	0	20	115	0	0	99%	12%		Prov. Lab/CCDC	2	0	0	0	0	0	0	0	2	0	0	0	0	0	0	0	0	100%	
China, Hebei	Prov. Lab	138	1	0	13	124	0	0	100%	8%		Prov. Lab/CCDC	1	0	1	0	0	0	0	0	0	0	0	0	0	0	0	0	0	0	100%
China, Heilongjiang	Prov. Lab	72	0	0	0	72	0	0	100%	0%		Prov. Lab/CCDC	0	-	-	-	-	-	-	-	-	-	-	-	-	-	-	-	-	-	
China, Henan	Prov. Lab	256	6	0	28	216	1	5	93%	8%		Prov. Lab/CCDC	12	0	10	0	0	0	0	0	2	0	0	0	0	0	0	0	0	100%	
China, Hunan	Prov. Lab	140	0	0	10	122	0	8	96%	7%		Prov. Lab/CCDC	0	-	-	-	-	-	-	-	-	-	-	-	-	-	-	-	-	-	
China, Jiangsu	Prov. Lab	113	3	0	1	109	0	0	97%	1%		Prov. Lab/CCDC	4	0	2	0	0	0	0	0	2	0	0	0	0	0	0	0	0	0	100%
China, Jiangxi	Prov. Lab	85	4	0	4	77	0	0	100%	4%		Prov. Lab/CCDC	6	0	2	0	0	4	0	0	0	0	0	0	0	0	0	0	0	0	100%
China, Jilin	Prov. Lab	29	0	0	3	26	0	0	100%	7%		Prov. Lab/CCDC	0	-	-	-	-	-	-	-	-	-	-	-	-	-	-	-	-	-	
China, Shaanxi	Prov. Lab	49	0	0	1	40	0	8	96%	1%		Prov. Lab/CCDC	0	-	-	-	-	-	-	-	-	-	-	-	-	-	-	-	-	-	
China, Shandong	Prov. Lab	193	0	0	13	180	0	0	98%	4%		Prov. Lab/CCDC	0	-	-	-	-	-	-	-	-	-	-	-	-	-	-	-	-	-	
China, Shanghai	Prov. Lab	23	0	0	0	23	0	0	100%	0%		Prov. Lab/CCDC	4	0	2	0	0	2	0	0	0	0	0	0	0	0	0	0	0	0	100%
China, Shanxi	Prov. Lab	89	0	0	4	84	0	1	89%	4%		Prov. Lab/CCDC	0	-	-	-	-	-	-	-	-	-	-	-	-	-	-	-	-	-	
China, Sichuan	Prov. Lab	175	1	0	17	149	0	8	92%	10%		Prov. Lab/CCDC	2	0	0	0	0	1	0	0	1	0	0	0	0	0	0	0	0	0	100%
China, Tianjin	Prov. Lab	27	1	0	0	26	0	0	100%	0%		Prov. Lab/CCDC	2	0	0	0	0	0	0	0	2	0	0	0	0	0	0	0	0	0	100%
China, Xinjiang	Prov. Lab	58	2	0	1	52	0	3	98%	2%		Prov. Lab/CCDC	6	0	2	0	0	4	0	0	0	0	0	0	0	0	0	0	0	0	100%
China, Yunnan	Prov. Lab	100	3	0	12	84	1	0	97%	11%		Prov. Lab/CCDC	5	0	2	0	0	2	0	0	1	0	0	0	0	0	0	0	0	0	60%
China, Zhejiang	Prov. Lab	89	3	0	8	77	0	1	93%	7%		Prov. Lab/CCDC	6	0	2	1	0	2	0	0	1	0	0	0	0	0	0	0	0	0	100%
China, Chongqing	Prov. Lab	50	1	0	6	41	0	2	96%	8%		CCDC	3	0	0	0	0	0	0	0	3	0	0	0	0	0	0	0	0	0	67%
China, Guizhou	Prov. Lab	109	0	0	18	91	0	0	98%	15%		CCDC	2	0	2	0	0	0	0	0	0	0	0	0	0	0	0	0	0	0	100%
China, Hainan	Prov. Lab	16	0	0	1	15	0	0	88%	6%		CCDC	0	-	-	-	-	-	-	-	-	-	-	-	-	-	-	-	-	-	
China, Hubei	Prov. Lab	83	0	0	9	74	0	0	95%	11%		CCDC	0	-	-	-	-	-	-	-	-	-	-	-	-	-	-	-	-	-	
China, Liaoning	Prov. Lab	40	0	0	0	40	0	0	100%	0%		CCDC	2	0	0	0	0	0	2	0	0	0	0	0	0	0	0	0	0	0	100%
China, Neimongol	Prov. Lab	43	0	0	0	43	0	0	100%	0%		CCDC	0	-	-	-	-	-	-	-	-	-	-	-	-	-	-	-	-	-	
China, Ningxia	Prov. Lab	14	0	0	0	12	0	2	96%	0%		CCDC	0	-	2	-	-	-	-	-	-	-	-	-	-	-	-	-	-	-	
China, Qinghai	Prov. Lab	10	0	0	1	9	0	0	100%	10%		CCDC	0	-	-	-	-	-	-	-	-	-	-	-	-	-	-	-	-	-	
China, Tibet	Prov. Lab	2	0	0	0	2	0	0	100%	0%		CCDC	0	-	-	-	-	-	-	-	-	-	-	-	-	-	-	-	-	-	
China, Hong Kong SAR	PHLC	7	0	0	0	7	0	0	91%	0%	20-Jul-15	PHLC	0	-	-	-	-	-	-	-	-	-	-	-	-	-	-	-	-	-	
China, Macao SAR	PHLC	0	-	-	-	-	-	-	-	-	20-Jul-15	PHLC	0	-	-	-	-	-	-	-	-	-	-	-	-	-	-	-	-	-	-
Japan	NIID	0	-	-	-	-	-	-	-	-	-	NIID	0	-	-	-	-	-	-	-	-	-	-	-	-	-	-	-	-	-	
Lao People's Democratic Republic	NIID	21	0	0	2	19	0	0	100%	10%	27-Jul-15	NIID	0	-	-	-	-	-	-	-	-	-	-	-	-	-	-	-	-	-	
Malaysia	IMR	69	0	0	5	64	0	0	99%	6%	08-Jul-15	IMR	0	-	-	-	-	-	-	-	-	-	-	-	-	-	-	-	-	-	
Mongolia	PHI	6	0	0	1	5	0	0	92%	17%	20-Jul-15	NIID	0	-	-	-	-	-	-	-	-	-	-	-	-	-	-	-	-	-	
New Zealand	IESR	2	0	0	0	2	0	0	100%	0%	07-Jul-15	IESR	0	-	-	-	-	-	-	-	-	-	-	-	-	-	-	-	-	-	
Papua New Guinea	VIDRL	12	1	0	3	8	0	0	90%	25%	31-Jul-15	VIDRL	1	0	1	0	0	0	0	0	0	0	0	0	0	0	0	0	0	0	100%
Philippines	RITM	301	1	0	34	249	16	1	88%	10%	09-Jul-15	RITM	2	0	0	0	0	0	0	0	2	0	0	0	0	0	0	0	0	0	100%
Republic of Korea	NIH	41	0	0	3	36	2	0	100%	8%	15-Jul-15	NIH	0	-	-	-	-	-	-	-	-	-	-	-	-	-	-	-	-	-	
Singapore	SGH	5	0	0	0	5	0	0	100%	0%	04-Aug-15	SGH	0	-	-	-	-	-	-	-	-	-	-	-	-	-	-	-	-	-	
Viet Nam (North)	NIHE	107	1	0	8	91	7	0	98%	7%	31-Jul-15	NIHE	2	0	2	0	0	0	0	0	0	0	0	0	0	0	0	0	0	0	100%
Viet Nam (South)	PI	67	0	0	8	55	4	0	95%	13%	10-Jul-15	PI	0	-	-	-	-	-	-	-	-	-	-	-	-	-	-	-	-	-	
Pacific island countries and areas	VIDRL	2	0	0	0	2	0	0	50%	0%	31-Jul-15	VIDRL	0	-	-	-	-	-	-	-	-	-	-	-	-	-	-	-	-	-	
<b>Total</b>		<b>3255</b>	<b>40</b>	<b>0</b>	<b>278</b>	<b>2857</b>	<b>34</b>	<b>46</b>	<b>96%</b>	<b>7%</b>			<b>98</b>	<b>0</b>	<b>34</b>	<b>1</b>	<b>0</b>	<b>31</b>	<b>4</b>	<b>0</b>	<b>28</b>	<b>0</b>	<b>0</b>	<b>0</b>	<b>0</b>	<b>0</b>	<b>0</b>	<b>0</b>	<b>0</b>	<b>94%</b>	

1. CCDC (Chinese Center for Disease Control and Prevention, China); IESR (Institute of Environmental Science and Research, New Zealand); IMR (Institute of Medical Research, Malaysia); NIH (National Institute of Health, Republic of Korea); NIHE (National Institute of Hygiene and Epidemiology, Ha Noi, Viet Nam); NIID (National Institute of Infectious Diseases, Japan); PHI (Public Health Institute, Mongolia); PHLC (Public Health Laboratory Center, China, Hong Kong SAR); PI (Pasteur Institute, Ho Chi Minh, Viet Nam); RITM (Research Institute for Tropical Medicine, Philippines); SGH (Singapore General Hospital); VIDRL (Victorian Infectious Diseases Reference Laboratory, Australia)

2. The target of 14 days for the timeliness of virus isolation will be used for all polio laboratories

3. NPEV growing in L20B cells

Table 3A. Laboratory confirmation of polio isolates from other sources in 2014 <sup>1</sup>

Country	Intratype differentiation lab <sup>2</sup>	Non-AFP cases												Environmental samples															
		Total number of non-AFP cases tested for polio	Total number of non-AFP cases with polio isolates	Type 1			Type 2			Type 3			NPEV	Pending ITD	Discordant pending sequencing	Total number of samples processed	Total number of samples with polio isolates	Type 1			Type 2			Type 3			NPEV	Pending ITD	Discordant pending sequencing
				Wild	Sabin	VDPV	Wild	Sabin	VDPV	Wild	Sabin	VDPV						Wild	Sabin	VDPV	Wild	Sabin	VDPV	Wild	Sabin	VDPV			
Australia	VIDRL	96	0	0	0	0	0	0	0	0	0	0	0	0	3	0	-	-	-	-	-	-	-	-	-	-	3	0	0
Brunei Darussalam	VIDRL	0	-	-	-	-	-	-	-	-	-	-	-	-	0	-	-	-	-	-	-	-	-	-	-	-	-	-	-
Cambodia	NIID	0	-	-	-	-	-	-	-	-	-	-	-	-	0	-	-	-	-	-	-	-	-	-	-	-	-	-	-
China		3	3	0	3	0	0	0	0	0	1	0	0	0	167	167	0	79	0	0	129	2	0	115	0	0	0	0	0
China, Anhui	Prov. Lab/CCDC	0	-	-	-	-	-	-	-	-	-	-	-	-	0	-	-	-	-	-	-	-	-	-	-	-	-	-	-
China, Beijing	Prov. Lab/CCDC	0	-	-	-	-	-	-	-	-	-	-	-	-	0	-	-	-	-	-	-	-	-	-	-	-	-	-	-
China, Fujian	Prov. Lab/CCDC	0	-	-	-	-	-	-	-	-	-	-	-	-	14	14	0	1	0	0	4	0	0	0	0	0	0	0	0
China, Gansu	Prov. Lab/CCDC	0	-	-	-	-	-	-	-	-	-	-	-	-	0	-	-	-	-	-	-	-	-	-	-	-	-	-	-
China, Guangdong	Prov. Lab/CCDC	0	-	-	-	-	-	-	-	-	-	-	-	-	48	48	0	21	0	0	22	0	0	15	0	0	0	0	0
China, Guangxi	Prov. Lab/CCDC	0	-	-	-	-	-	-	-	-	-	-	-	-	0	-	-	-	-	-	-	-	-	-	-	-	-	-	-
China, Hebei	Prov. Lab/CCDC	0	-	-	-	-	-	-	-	-	-	-	-	-	0	-	-	-	-	-	-	-	-	-	-	-	-	-	-
China, Heilongjiang	Prov. Lab/CCDC	0	-	-	-	-	-	-	-	-	-	-	-	-	18	18	0	11	0	0	37	1	0	47	0	0	0	0	0
China, Henan	Prov. Lab/CCDC	0	-	-	-	-	-	-	-	-	-	-	-	-	0	-	-	-	-	-	-	-	-	-	-	-	-	-	-
China, Hunan	Prov. Lab/CCDC	0	-	-	-	-	-	-	-	-	-	-	-	-	0	-	-	-	-	-	-	-	-	-	-	-	-	-	-
China, Jiangsu	Prov. Lab/CCDC	0	-	-	-	-	-	-	-	-	-	-	-	-	0	-	-	-	-	-	-	-	-	-	-	-	-	-	-
China, Jiangxi	Prov. Lab/CCDC	0	-	-	-	-	-	-	-	-	-	-	-	-	0	-	-	-	-	-	-	-	-	-	-	-	-	-	-
China, Jilin	Prov. Lab/CCDC	0	-	-	-	-	-	-	-	-	-	-	-	-	0	-	-	-	-	-	-	-	-	-	-	-	-	-	-
China, Shaanxi	Prov. Lab/CCDC	0	-	-	-	-	-	-	-	-	-	-	-	-	0	-	-	-	-	-	-	-	-	-	-	-	-	-	-
China, Shandong	Prov. Lab/CCDC	0	-	-	-	-	-	-	-	-	-	-	-	-	48	48	0	13	0	0	16	0	0	23	0	0	0	0	0
China, Shanghai	Prov. Lab/CCDC	0	-	-	-	-	-	-	-	-	-	-	-	-	12	12	0	6	0	0	12	0	0	10	0	0	0	0	0
China, Shanxi	Prov. Lab/CCDC	0	-	-	-	-	-	-	-	-	-	-	-	-	0	-	-	-	-	-	-	-	-	-	-	-	-	-	-
China, Sichuan	Prov. Lab/CCDC	0	-	-	-	-	-	-	-	-	-	-	-	-	0	-	-	-	-	-	-	-	-	-	-	-	-	-	-
China, Tianjin	Prov. Lab/CCDC	0	-	-	-	-	-	-	-	-	-	-	-	-	0	-	-	-	-	-	-	-	-	-	-	-	-	-	-
China, Xinjiang	Prov. Lab/CCDC	0	-	-	-	-	-	-	-	-	-	-	-	-	27	27	0	27	0	0	38	1	0	20	0	0	0	0	0
China, Yunnan	Prov. Lab/CCDC	1	1	0	1	0	0	0	0	0	0	0	0	0	0	-	-	-	-	-	-	-	-	-	-	-	-	-	-
China, Zhejiang	Prov. Lab/CCDC	0	-	-	-	-	-	-	-	-	-	-	-	-	0	-	-	-	-	-	-	-	-	-	-	-	-	-	-
China, Chongqing	CCDC	0	-	-	-	-	-	-	-	-	-	-	-	-	0	-	-	-	-	-	-	-	-	-	-	-	-	-	-
China, Guizhou	CCDC	0	-	-	-	-	-	-	-	-	-	-	-	-	0	-	-	-	-	-	-	-	-	-	-	-	-	-	-
China, Hainan	CCDC	0	-	-	-	-	-	-	-	-	-	-	-	-	0	-	-	-	-	-	-	-	-	-	-	-	-	-	-
China, Hubei	CCDC	0	-	-	-	-	-	-	-	-	-	-	-	-	0	-	-	-	-	-	-	-	-	-	-	-	-	-	-
China, Liaoning	CCDC	0	-	-	-	-	-	-	-	-	-	-	-	-	0	-	-	-	-	-	-	-	-	-	-	-	-	-	-
China, Neimongol	CCDC	0	-	-	-	-	-	-	-	-	-	-	-	-	0	-	-	-	-	-	-	-	-	-	-	-	-	-	-
China, Ningxia	CCDC	0	-	-	-	-	-	-	-	-	-	-	-	-	0	-	-	-	-	-	-	-	-	-	-	-	-	-	-
China, Qinghai	CCDC	2	2	0	2	0	0	0	0	0	1	0	0	0	0	-	-	-	-	-	-	-	-	-	-	-	-	-	-
China, Tibet	CCDC	0	-	-	-	-	-	-	-	-	-	-	-	-	0	-	-	-	-	-	-	-	-	-	-	-	-	-	-
China, Hong Kong SAR	PHLC	0	-	-	-	-	-	-	-	-	-	-	-	-	0	-	-	-	-	-	-	-	-	-	-	-	-	-	-
China, Macao SAR	PHLC	0	-	-	-	-	-	-	-	-	-	-	-	-	0	-	-	-	-	-	-	-	-	-	-	-	-	-	-
Japan	NIID	0	-	-	-	-	-	-	-	-	-	-	-	-	0	-	-	-	-	-	-	-	-	-	-	-	-	-	-
Lao People's Democratic Republic	NIID	0	-	-	-	-	-	-	-	-	-	-	-	-	0	-	-	-	-	-	-	-	-	-	-	-	-	-	-
Malaysia	IMR	0	-	-	-	-	-	-	-	-	-	-	-	-	21	7	0	1	0	0	1	0	0	5	0	7	0	0	0
Mongolia	NIID	203	0	0	0	0	0	0	0	0	0	0	23	0	0	-	-	-	-	-	-	-	-	-	-	-	-	-	-
New Zealand	IESR	0	-	-	-	-	-	-	-	-	-	-	-	-	0	-	-	-	-	-	-	-	-	-	-	-	-	-	-
Papua New Guinea	VIDRL	0	-	-	-	-	-	-	-	-	-	-	-	-	0	-	-	-	-	-	-	-	-	-	-	-	-	-	-
Philippines	RITM	3	3	0	1	0	0	1	0	0	1	0	0	0	0	-	-	-	-	-	-	-	-	-	-	-	-	-	-
Republic of Korea	NIH	0	-	-	-	-	-	-	-	-	-	-	-	-	0	-	-	-	-	-	-	-	-	-	-	-	-	-	-
Singapore	SGH	0	-	-	-	-	-	-	-	-	-	-	-	-	0	-	-	-	-	-	-	-	-	-	-	-	-	-	-
Viet Nam (North)	NIHE	0	-	-	-	-	-	-	-	-	-	-	-	-	0	-	-	-	-	-	-	-	-	-	-	-	-	-	-
Viet Nam (South)	PI	0	-	-	-	-	-	-	-	-	-	-	-	-	0	-	-	-	-	-	-	-	-	-	-	-	-	-	-
Pacific island countries and areas	VIDRL	0	-	-	-	-	-	-	-	-	-	-	-	-	0	-	-	-	-	-	-	-	-	-	-	-	-	-	-
<b>Total</b>		<b>305</b>	<b>6</b>	<b>0</b>	<b>4</b>	<b>0</b>	<b>0</b>	<b>1</b>	<b>0</b>	<b>0</b>	<b>2</b>	<b>0</b>	<b>23</b>	<b>0</b>	<b>0</b>	<b>191</b>	<b>174</b>	<b>0</b>	<b>80</b>	<b>0</b>	<b>0</b>	<b>130</b>	<b>2</b>	<b>0</b>	<b>120</b>	<b>0</b>	<b>10</b>	<b>0</b>	<b>0</b>

1. Based on year of collection of sample, if available. Otherwise, based on year of receipt at reference laboratory.

2. CCDC (Chinese Center for Disease Control and Prevention, China); IESR (Institute of Environmental Science and Research, New Zealand); IMR (Institute of Medical Research, Malaysia); NIH (National Institute of Health, Republic of Korea); NIHE (National Institute of Hygiene and Epidemiology, Ha Noi, Viet Nam); NIID (National Institute of Infectious Diseases, Japan); PHI (Public Health Institute, Mongolia); PHLC (Public Health Laboratory Center, China, Hong Kong SAR); PI (Pasteur Institute, Ho Chi Minh, Viet Nam); RITM (Research Institute for Tropical Medicine, Philippines); SGH (Singapore General Hospital); VIDRL (Victorian Infectious Diseases Reference Laboratory, Australia)

Table 3B. Laboratory confirmation of polio isolates from other sources in 2015 <sup>1</sup>

Country	Intratype differentiation lab <sup>2</sup>	Non-AFP cases											Environmental samples																
		Total number of non-AFP cases tested for polio	Total number of non-AFP cases with polio isolates	Type 1			Type 2			Type 3			NPEV	Pending ITD	Discordant pending sequencing	Total number of samples processed	Total number of samples with polio isolates	Type 1			Type 2			Type 3			NPEV	Pending ITD	Discordant pending sequencing
				Wild	Sabin	VDPV	Wild	Sabin	VDPV	Wild	Sabin	VDPV						Wild	Sabin	VDPV	Wild	Sabin	VDPV	Wild	Sabin	VDPV			
Australia	VIDRL	65	0	-	-	-	-	-	-	-	-	-	1	0	0	26	2	0	0	0	0	1	0	0	1	0	19	0	0
Brunei Darussalam	VIDRL	0	-	-	-	-	-	-	-	-	-	-	-	-	-	0	-	-	-	-	-	-	-	-	-	-	-	-	-
Cambodia	NIID	0	-	-	-	-	-	-	-	-	-	-	-	-	-	0	-	-	-	-	-	-	-	-	-	-	-	-	-
China		0	-	-	-	-	-	-	-	-	-	-	-	-	-	0	-	-	-	-	-	-	-	-	-	-	-	-	-
China, Anhui	Prov. Lab/CCDC	0	-	-	-	-	-	-	-	-	-	-	-	-	-	0	-	-	-	-	-	-	-	-	-	-	-	-	-
China, Beijing	Prov. Lab/CCDC	0	-	-	-	-	-	-	-	-	-	-	-	-	-	0	-	-	-	-	-	-	-	-	-	-	-	-	-
China, Fujian	Prov. Lab/CCDC	0	-	-	-	-	-	-	-	-	-	-	-	-	-	0	-	-	-	-	-	-	-	-	-	-	-	-	-
China, Gansu	Prov. Lab/CCDC	0	-	-	-	-	-	-	-	-	-	-	-	-	-	0	-	-	-	-	-	-	-	-	-	-	-	-	-
China, Guangdong	Prov. Lab/CCDC	0	-	-	-	-	-	-	-	-	-	-	-	-	-	0	-	-	-	-	-	-	-	-	-	-	-	-	-
China, Guangxi	Prov. Lab/CCDC	0	-	-	-	-	-	-	-	-	-	-	-	-	-	0	-	-	-	-	-	-	-	-	-	-	-	-	-
China, Hebei	Prov. Lab/CCDC	0	-	-	-	-	-	-	-	-	-	-	-	-	-	0	-	-	-	-	-	-	-	-	-	-	-	-	-
China, Heilongjiang	Prov. Lab/CCDC	0	-	-	-	-	-	-	-	-	-	-	-	-	-	0	-	-	-	-	-	-	-	-	-	-	-	-	-
China, Henan	Prov. Lab/CCDC	0	-	-	-	-	-	-	-	-	-	-	-	-	-	0	-	-	-	-	-	-	-	-	-	-	-	-	-
China, Hunan	Prov. Lab/CCDC	0	-	-	-	-	-	-	-	-	-	-	-	-	-	0	-	-	-	-	-	-	-	-	-	-	-	-	-
China, Jiangsu	Prov. Lab/CCDC	0	-	-	-	-	-	-	-	-	-	-	-	-	-	0	-	-	-	-	-	-	-	-	-	-	-	-	-
China, Jiangxi	Prov. Lab/CCDC	0	-	-	-	-	-	-	-	-	-	-	-	-	-	0	-	-	-	-	-	-	-	-	-	-	-	-	-
China, Jilin	Prov. Lab/CCDC	0	-	-	-	-	-	-	-	-	-	-	-	-	-	0	-	-	-	-	-	-	-	-	-	-	-	-	-
China, Shaanxi	Prov. Lab/CCDC	0	-	-	-	-	-	-	-	-	-	-	-	-	-	0	-	-	-	-	-	-	-	-	-	-	-	-	-
China, Shandong	Prov. Lab/CCDC	0	-	-	-	-	-	-	-	-	-	-	-	-	-	0	-	-	-	-	-	-	-	-	-	-	-	-	-
China, Shanghai	Prov. Lab/CCDC	0	-	-	-	-	-	-	-	-	-	-	-	-	-	0	-	-	-	-	-	-	-	-	-	-	-	-	-
China, Shanxi	Prov. Lab/CCDC	0	-	-	-	-	-	-	-	-	-	-	-	-	-	0	-	-	-	-	-	-	-	-	-	-	-	-	-
China, Sichuan	Prov. Lab/CCDC	0	-	-	-	-	-	-	-	-	-	-	-	-	-	0	-	-	-	-	-	-	-	-	-	-	-	-	-
China, Tianjin	Prov. Lab/CCDC	0	-	-	-	-	-	-	-	-	-	-	-	-	-	0	-	-	-	-	-	-	-	-	-	-	-	-	-
China, Xinjiang	Prov. Lab/CCDC	0	-	-	-	-	-	-	-	-	-	-	-	-	-	0	-	-	-	-	-	-	-	-	-	-	-	-	-
China, Yunnan	Prov. Lab/CCDC	0	-	-	-	-	-	-	-	-	-	-	-	-	-	0	-	-	-	-	-	-	-	-	-	-	-	-	-
China, Zhejiang	Prov. Lab/CCDC	0	-	-	-	-	-	-	-	-	-	-	-	-	-	0	-	-	-	-	-	-	-	-	-	-	-	-	-
China, Chongqing	CCDC	0	-	-	-	-	-	-	-	-	-	-	-	-	-	0	-	-	-	-	-	-	-	-	-	-	-	-	-
China, Guizhou	CCDC	0	-	-	-	-	-	-	-	-	-	-	-	-	-	0	-	-	-	-	-	-	-	-	-	-	-	-	-
China, Hainan	CCDC	0	-	-	-	-	-	-	-	-	-	-	-	-	-	0	-	-	-	-	-	-	-	-	-	-	-	-	-
China, Hubei	CCDC	0	-	-	-	-	-	-	-	-	-	-	-	-	-	0	-	-	-	-	-	-	-	-	-	-	-	-	-
China, Liaoning	CCDC	0	-	-	-	-	-	-	-	-	-	-	-	-	-	0	-	-	-	-	-	-	-	-	-	-	-	-	-
China, Neimongol	CCDC	0	-	-	-	-	-	-	-	-	-	-	-	-	-	0	-	-	-	-	-	-	-	-	-	-	-	-	-
China, Ningxia	CCDC	0	-	-	-	-	-	-	-	-	-	-	-	-	-	0	-	-	-	-	-	-	-	-	-	-	-	-	-
China, Qinghai	CCDC	0	-	-	-	-	-	-	-	-	-	-	-	-	-	0	-	-	-	-	-	-	-	-	-	-	-	-	-
China, Tibet	CCDC	0	-	-	-	-	-	-	-	-	-	-	-	-	-	0	-	-	-	-	-	-	-	-	-	-	-	-	-
China, Hong Kong SAR	PHLC	0	-	-	-	-	-	-	-	-	-	-	-	-	-	0	-	-	-	-	-	-	-	-	-	-	-	-	-
China, Macao SAR	PHLC	0	-	-	-	-	-	-	-	-	-	-	-	-	-	0	-	-	-	-	-	-	-	-	-	-	-	-	-
Japan	NIID	0	-	-	-	-	-	-	-	-	-	-	-	-	-	0	-	-	-	-	-	-	-	-	-	-	-	-	-
Lao People's Democratic Republic	NIID	0	-	-	-	-	-	-	-	-	-	-	-	-	-	0	-	-	-	-	-	-	-	-	-	-	-	-	-
Malaysia	IMR	0	-	-	-	-	-	-	-	-	-	-	-	-	-	0	-	-	-	-	-	-	-	-	-	-	-	-	-
Mongolia	NIID	54	0	0	0	0	0	0	0	0	0	6	0	0	0	-	-	-	-	-	-	-	-	-	-	-	-	-	-
New Zealand	IESR	0	-	-	-	-	-	-	-	-	-	-	-	-	-	0	-	-	-	-	-	-	-	-	-	-	-	-	-
Papua New Guinea	VIDRL	0	-	-	-	-	-	-	-	-	-	-	-	-	-	0	-	-	-	-	-	-	-	-	-	-	-	-	-
Philippines	RITM	3	3	0	1	0	0	1	0	0	1	0	0	0	0	-	-	-	-	-	-	-	-	-	-	-	-	-	-
Republic of Korea	NIH	0	-	-	-	-	-	-	-	-	-	-	-	-	-	0	-	-	-	-	-	-	-	-	-	-	-	-	-
Singapore	SGH	0	-	-	-	-	-	-	-	-	-	-	-	-	-	0	-	-	-	-	-	-	-	-	-	-	-	-	-
Viet Nam (North)	NIHE	0	-	-	-	-	-	-	-	-	-	-	-	-	-	0	-	-	-	-	-	-	-	-	-	-	-	-	-
Viet Nam (South)	PI	0	-	-	-	-	-	-	-	-	-	-	-	-	-	0	-	-	-	-	-	-	-	-	-	-	-	-	-
Pacific island countries and areas	VIDRL	0	-	-	-	-	-	-	-	-	-	-	-	-	-	0	-	-	-	-	-	-	-	-	-	-	-	-	-
<b>Total</b>		<b>122</b>	<b>3</b>	<b>0</b>	<b>1</b>	<b>0</b>	<b>0</b>	<b>1</b>	<b>0</b>	<b>0</b>	<b>1</b>	<b>0</b>	<b>7</b>	<b>0</b>	<b>0</b>	<b>26</b>	<b>2</b>	<b>0</b>	<b>0</b>	<b>0</b>	<b>0</b>	<b>1</b>	<b>0</b>	<b>0</b>	<b>1</b>	<b>0</b>	<b>19</b>	<b>0</b>	<b>0</b>

1. Based on year of collection of sample, if available. Otherwise, based on year of receipt at reference laboratory.

2. CCDC (Chinese Center for Disease Control and Prevention, China); IESR (Institute of Environmental Science and Research, New Zealand); IMR (Institute of Medical Research, Malaysia); NIH (National Institute of Health, Republic of Korea); NIHE (National Institute of Hygiene and Epidemiology, Ha Noi, Viet Nam); NIID (National Institute of Infectious Diseases, Japan); PHI (Public Health Institute, Mongolia); PHLC (Public Health Laboratory Center, China, Hong Kong SAR); PI (Pasteur Institute, Ho Chi Minh, Viet Nam); RITM (Research Institute for Tropical Medicine, Philippines); SGH (Singapore General Hospital); VIDRL (Victorian Infectious Diseases Reference Laboratory, Australia)

Table 4. Vaccine-derived poliovirus, 2000–2015

Country	2000–2009 <sup>2</sup>	2010	2011	2012	2013	2014	2015
Cambodia	2006 (1 case) Total (2 cases)						
China	2009 (1 case) Total (27 cases)	aVDPV2 (5 cases) aVDPV3 (2 cases)	aVDPV1 (1 case) aVDPV2 (3 cases) cVDPV2 (2 cases) iVDPV2 (2 cases) iVDPV3 (1 case)	aVDPV1 (1 case) aVDPV2 (2 cases) cVDPV2 (3 cases) iVDPV2 + iVDPV3 (1 case)	aVDPV2 (1 case) iVDPV2 + iVDPV3 (1 case)	aVDPV1 (1 case) aVDPV2 (2 cases) iVDPV3 (1 case)	iVDPV2 (1 case) ?VDPV1 (1 case) ?VDPV2 (1 case)
China, Hong Kong SAR	2005 (3 cases)						
Japan	2005 (1 case) Total (2 cases)						
Lao People's Democratic Republic	2004 (3 cases)						
Mongolia	2003 (1 case)						
Philippines	2001 (3 cases)					aVDPV2 (1 case)	
Viet Nam				aVDPV2 (2 cases)			

1. Prefix letter refers to the VDPV category - "cVDPV" = circulating VDPV, "iVDPV" = immunodeficiency-associated VDPV, "aVDPV" = ambiguous VDPV, "?VDPV" = unknown. Suffix number refers to the poliovirus serotype (types 1, 2 or 3).

2. Refers to year of last VDPV case, and aggregate total of VDPV cases for 2000-2009