

## HIGHLIGHTS

### Implementation of Polio Endgame Strategy in the WHO region for Western Pacific (Update on progress as of 15 September 2015)

According to the global Polio Eradication and Endgame Strategic Plan 2013–2018, 17 countries and territories in the Western Pacific Region that use only oral polio vaccine (OPV) need to introduce at least one dose of inactivated polio vaccine (IPV) by the end of 2015. All countries that will continue using OPV in their routine immunization programmes after January 2016 should make all necessary preparations to implement the global switch from trivalent OPV (tOPV) to bivalent OPV (bOPV) in April 2016.

The status of introduction of IPV vaccine and development of the National Switch Plans in the Western Pacific Region is summarized in below table (as of 15 September 2015):

Countries using OPV	IPV introduction date	Development of the National Switch Plan
Cambodia	Dec 2015	In process
China	Phased from Dec 2014	In process
Lao PDR	Oct 2015	In process
Mongolia	Jan 2016	Finalized
Papua New Guinea	Phased from Aug 2015	In process
Philippines	Phased from July 2015	In process
Viet Nam	Jan-April 2016	In process
<b>Pacific island countries and areas</b>		
Cook Islands	Nov 2015	Draft plan developed
Fiji	Will switch to all-IPV schedule by end 2015	In process
Kiribati	Introduced nationwide in Jun 2015	Draft plan developed
Nauru	Oct 2015	In process
Samoa	Oct 2015	Draft plan developed
Solomon Islands	Sep 2015	Draft plan developed
Tokelau	Will switch to all-IPV schedule by end 2015	Draft plan developed
Tonga	Nov 2015	Draft plan developed
Tuvalu	Will switch to all-IPV schedule by end 2015	Draft plan developed
Vanuatu	Sep 2015	In process

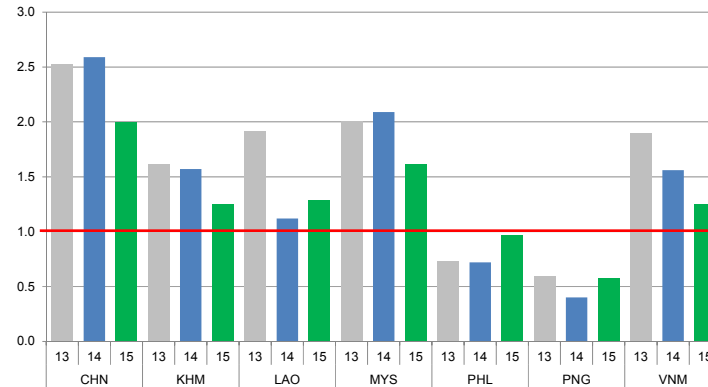
### China reaffirms its support to Polio Endgame Strategy

On 3-4 September, the WHO Director-General, Dr Margaret Chan visited the People's Republic of China. During the visit Dr Chan received a letter from the Minister of National Health and Family Planning Commission confirming high-level support of the Government of China for full and timely implementation of activities envisaged by the Polio Eradication Endgame Strategic Plan, including nationwide introduction of IPV vaccine and switch from tOPV to bOPV vaccine.

## CONTACT US

Expanded Programme on Immunization  
Regional Office for the Western Pacific  
World Health Organization  
P.O. Box 2932, 1000 Manila, Philippines  
Phone: +63 2 5288001  
Fax: +63 2 5211036, 5260279  
Email: [WPR\\_EPIData@wpro.who.int](mailto:WPR_EPIData@wpro.who.int)  
Web: [www.wpro.who.int/immunization](http://www.wpro.who.int/immunization)

Chart 1. Non-polio AFP rate (per 100 000 persons < 15 years of age), 2013–2015\*



\* AFP rate annualized as of week 37

Chart 2. Adequate specimen collection rate, 2013–2015

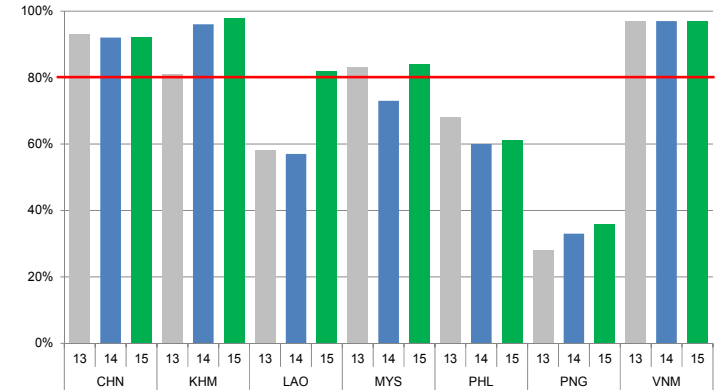


Chart 3. Percentage of reported AFP cases by number of polio vaccination doses, 2015

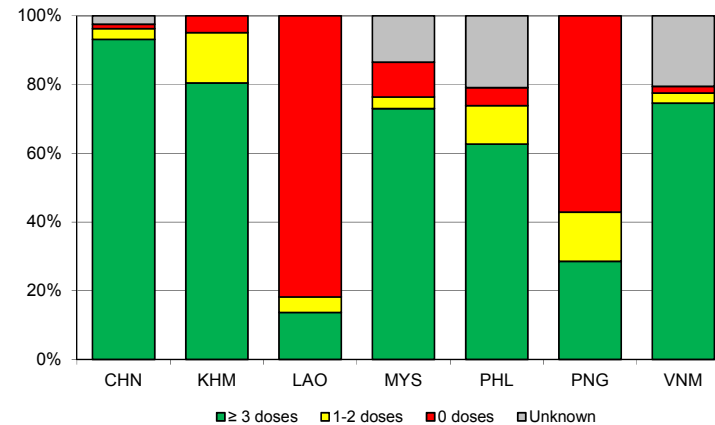
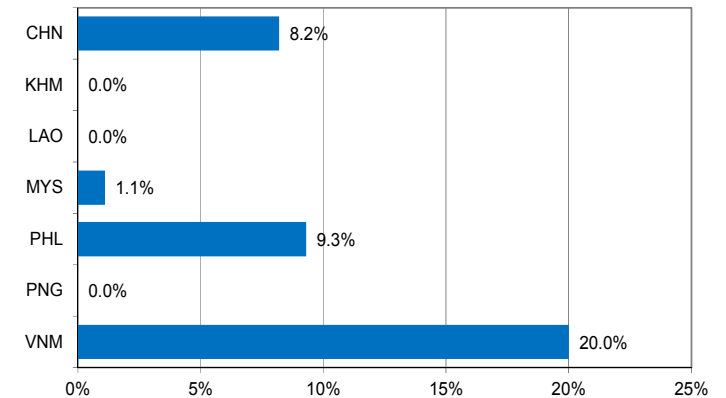


Chart 4. Percentage of reported AFP cases with pending classification > 90 days after onset, 2015



Note: Priority countries were selected for the charts. Official WHO acronyms have been used for abbreviation: CHN (China), KHM (Cambodia), LAO (Lao People's Democratic Republic), MYS (Malaysia), PHL (Philippines), PNG (Papua New Guinea), and VNM (Viet Nam).

Table 1A. Classification of AFP cases with onset in 2014 and key surveillance indicators

Country/area	2013		2014							Indicators			Latest report date <sup>4</sup>	Days since last report <sup>5</sup>
	Total reported cases	Annual expected cases <15 years of age	Total reported cases	Classification				Pending		Non-polio AFP rate	% with adequate specimens <sup>2</sup>	% investigated ≤ 2 days of notification <sup>3</sup>		
				Confirmed wild poliovirus	Vaccine-derived poliovirus (VDPV)	Polio-compatible	Discarded (Non-polio)	Total	> 90 days <sup>1</sup> # (%)					
														≤ 30
Australia	62	44	60	0	0	2	58	0	0 (0.0%)	1.36	50%	83%	07-Apr-15	-
Brunei Darussalam	1	1	4	0	0	0	4	0	0 (0.0%)	4.00	75%	100%	07-Apr-15	-
Cambodia	73	46	72	0	0	0	72	0	0 (0.0%)	1.57	96%	93%	14-May-15	-
China	5623	2225	5758	0	2	0	5756	0	0 (0.0%)	2.59	92%	100%	13-May-15	-
China, Hong Kong SAR	12	8	19	0	0	0	19	0	0 (0.0%)	2.38	89%	100%	05-Mar-15	-
China, Macao SAR	1	1	1	0	0	0	1	0	0 (0.0%)	1.00	0%	100%	13-Jan-15	-
Japan	-	167	-	-	-	-	-	-	-	-	-	-	-	-
Lao People's Democratic Republic	48	25	28	0	0	0	28	0	0 (0.0%)	1.12	57%	93%	27-Apr-15	-
Malaysia	155	77	161	0	0	0	161	0	0 (0.0%)	2.09	73%	87%	10-Mar-15	-
Mongolia	7	8	9	0	0	0	9	0	0 (0.0%)	1.13	89%	100%	05-Mar-15	-
New Zealand	12	9	8	0	0	0	8	0	0 (0.0%)	0.89	38%	100%	11-Mar-15	-
Papua New Guinea	18	30	12	0	0	0	12	0	0 (0.0%)	0.40	33%	75%	07-Apr-15	-
Philippines	277	378	272	0	1	0	271	0	0 (0.0%)	0.72	60%	97%	26-Jun-15	-
Republic of Korea	84	72	88	0	0	0	88	0	0 (0.0%)	1.22	86%	98%	16-Feb-15	-
Singapore	7	6	8	0	0	0	8	0	0 (0.0%)	1.33	75%	88%	07-Jan-15	-
Viet Nam	459	231	361	0	0	0	361	0	0 (0.0%)	1.56	97%	93%	14-Apr-15	-
Pacific island countries and areas	8	10	15	0	0	0	13	2	2 (13.3%)	1.50	67%	93%	02-Sep-15	12
<b>Total</b>	<b>6847</b>	<b>3338</b>	<b>6876</b>	<b>0</b>	<b>3</b>	<b>2</b>	<b>6869</b>	<b>2</b>	<b>2 (0.0%)</b>	<b>2.06</b>	<b>90%</b>	<b>99%</b>		

- Number (%) of reported cases pending classification more than 90 days from date of onset of paralysis to date of last report
- Percentage of reported cases with two stool specimens collected 24 hours apart and within 14 days of onset of paralysis
- Percentage of reported cases investigated within two days of notification
- Report date is fixed as soon as all cases for the year have been classified
- Countries are expected to submit data at least once per month to WPRO

Green	Reached or surpassed target
Yellow	Nearly reached target: 0.5–0.99 for non-polio AFP rate; 60–79% for other indicators
Red	Substantially below target

Table 1B. Classification of AFP cases with onset in 2015 and key surveillance indicators

Country/area	2014	2015												
	Total reported cases	Annual expected cases <15 years of age	Total reported cases	Classification						Indicators			Latest report date	Days since last report <sup>5</sup>
				Confirmed wild poliovirus	Vaccine-derived poliovirus (VDPV)	Polio-compatible	Discarded (Non-polio)	Pending		Non-polio AFP rate <sup>2</sup>	% with adequate specimens <sup>3</sup>	% investigated ≤ 2 days of notification <sup>4</sup>		
								Total	> 90 days <sup>1</sup> # (%)					
≥ 1	≥ 80%	≥ 80%	≤ 30											
Australia	60	44	29	0	0	0	23	6	3 (10.3%)	0.93	24%	100%	08-Sep-15	6
Brunei Darussalam	4	1	2	0	0	0	2	0	0 (0.0%)	2.81	100%	100%	19-Aug-15	26
Cambodia	72	46	41	0	0	0	25	16	0 (0.0%)	1.25	98%	100%	04-Sep-15	10
China	5758	2234	3176	0	0	0	2137	1039	262 (8.2%)	2.00	92%	100%	09-Sep-15	5
China, Hong Kong SAR	19	8	8	0	0	0	8	0	0 (0.0%)	1.41	88%	100%	04-Sep-15	10
China, Macao SAR	1	1	1	0	0	0	1	0	0 (0.0%)	1.41	100%	100%	18-Aug-15	27
Japan	0	163	0	-	-	-	-	-	-	-	-	-	-	-
Lao People's Democratic Republic	28	24	22	0	0	0	19	3	0 (0.0%)	1.29	82%	95%	10-Aug-15	35
Malaysia	161	77	89	0	0	0	74	15	1 (1.1%)	1.62	84%	73%	09-Sep-15	5
Mongolia	9	9	6	0	0	0	6	0	0 (0.0%)	0.94	100%	100%	09-Sep-15	5
New Zealand	8	9	5	0	0	0	5	0	0 (0.0%)	0.78	40%	100%	27-Aug-15	18
Papua New Guinea	12	34	14	0	0	0	13	1	0 (0.0%)	0.58	36%	79%	14-Sep-15	0
Philippines	272	387	268	0	0	0	210	58	25 (9.3%)	0.97	61%	97%	11-Sep-15	3
Republic of Korea	88	70	50	0	0	0	41	9	0 (0.0%)	1.00	84%	96%	17-Aug-15	28
Singapore	8	6	6	0	0	0	6	0	0 (0.0%)	1.41	100%	83%	09-Sep-15	5
Viet Nam	361	231	205	0	0	0	93	102	41 (20.0%)	1.25	97%	98%	25-Aug-15	20
Pacific island countries and areas	15	10	2	0	0	0	1	1	0 (0.0%)	0.28	50%	100%	07-Sep-15	7
<b>Total</b>	<b>6876</b>	<b>3354</b>	<b>3924</b>	<b>0</b>	<b>0</b>	<b>0</b>	<b>2664</b>	<b>1250</b>	<b>332 (8.5%)</b>	<b>1.64</b>	<b>89%</b>	<b>99%</b>		

- Number (%) of reported cases pending classification more than 90 days from date of onset of paralysis to date of last report
- Annualized non-polio AFP rate per 100 000 population under 15 years of age
- Percentage of reported cases with two stool specimens collected 24 hours apart and within 14 days of onset of paralysis
- Percentage of reported cases investigated within two days of notification
- Countries are expected to submit data at least once per month to WPRO

Green	Reached or surpassed target
Yellow	Nearly reached target: 0.5–0.99 for non-polio AFP rate; 60–79% for other indicators
Red	Substantially below target



Table 2B. Laboratory investigation of AFP cases with onset in 2015 and key laboratory indicators

Country/area	Polio laboratory <sup>1</sup>	Total no. of AFP cases with specimens	Virus isolation results							% specimens positive for NPEV	Latest report date	Intratyphic differentiation/ Sequencing laboratory <sup>1</sup>	No. of isolates received	Intratyphic differentiation (ITD)/sequencing results														
			L20B positive	L20B positive + NPEV	NPEV only	Negative	Pending ≤ 14 days	Pending > 14 days	% results reported ≤ 14 days					Type 1			Type 2			Type 3			NPEV <sup>2</sup>	Pending ITD	Discordant pending sequencing	% ITD results reported ≤ 7 days of receipt		
														Wild	Sabin	VDPV	Wild	Sabin	VDPV	Wild	Sabin	VDPV						
Australia	VIDRL	24	0	0	1	21	2	0	89%	3%	11-Sep-15	VIDRL	0	-	-	-	-	-	-	-	-	-	-	-	-	-		
Brunei Darussalam	VIDRL	2	0	0	0	2	0	0	100%	0%	14-Aug-15	VIDRL	0	-	-	-	-	-	-	-	-	-	-	-	-	-	-	
Cambodia	NIID	38	0	0	6	32	0	0	92%	15%	04-Sep-15	NIID	0	-	-	-	-	-	-	-	-	-	-	-	-	-	-	
China (total)		3142	44	0	292	2723	2	81	97%	8%	11-Sep-15		112	0	34	1	0	38	5	0	32	0	2	0	0	0	97%	
China, Anhui	Prov. Lab	172	2	0	12	155	0	3	96%	7%		Prov. Lab/CCDC	4	0	1	0	0	1	0	0	2	0	0	0	0	0	100%	
China, Beijing	Prov. Lab	21	2	0	0	19	0	0	100%	0%		Prov. Lab/CCDC	4	0	1	0	0	2	0	0	1	0	0	0	0	0	100%	
China, Fujian	Prov. Lab	87	2	0	19	65	0	1	98%	22%		Prov. Lab/CCDC	5	0	0	0	0	3	0	0	2	0	0	0	0	0	100%	
China, Gansu	Prov. Lab	57	0	0	9	47	0	1	96%	12%		Prov. Lab/CCDC	0	-	-	-	-	-	-	-	-	-	-	-	-	-	-	
China, Guangdong	Prov. Lab	196	7	0	10	175	0	4	96%	4%		Prov. Lab/CCDC	26	0	4	0	0	12	3	0	7	0	0	0	0	0	100%	
China, Guangxi	Prov. Lab	172	2	0	24	145	0	1	99%	11%		Prov. Lab/CCDC	4	0	0	0	0	0	0	4	0	0	0	0	0	0	100%	
China, Hebei	Prov. Lab	178	2	0	29	144	0	3	99%	13%		Prov. Lab/CCDC	2	0	2	0	0	0	0	0	0	0	0	0	0	0	100%	
China, Heilongjiang	Prov. Lab	82	0	0	1	81	0	0	100%	1%		Prov. Lab/CCDC	0	-	-	-	-	-	-	-	-	-	-	-	-	-	-	
China, Henan	Prov. Lab	330	6	0	31	260	0	33	93%	8%		Prov. Lab/CCDC	12	0	10	0	0	0	0	2	0	0	0	0	0	0	100%	
China, Hunan	Prov. Lab	186	1	0	14	164	0	7	97%	8%		Prov. Lab/CCDC	2	0	0	0	0	2	0	0	0	0	0	0	0	0	-	
China, Jiangsu	Prov. Lab	131	3	0	2	126	0	0	98%	2%		Prov. Lab/CCDC	4	0	2	0	0	0	0	2	0	0	0	0	0	0	100%	
China, Jiangxi	Prov. Lab	108	4	0	4	96	0	4	100%	3%		Prov. Lab/CCDC	6	0	2	0	0	4	0	0	0	0	0	0	0	0	100%	
China, Jilin	Prov. Lab	32	0	0	2	30	0	0	100%	5%		Prov. Lab/CCDC	0	-	-	-	-	-	-	-	-	-	-	-	-	-	-	
China, Shaanxi	Prov. Lab	62	1	0	2	52	0	7	94%	4%		Prov. Lab/CCDC	2	0	2	0	0	0	0	0	0	0	0	0	0	0	100%	
China, Shandong	Prov. Lab	235	0	0	24	211	0	0	98%	8%		Prov. Lab/CCDC	0	-	-	-	-	-	-	-	-	-	-	-	-	-	-	
China, Shanghai	Prov. Lab	25	0	0	1	24	0	0	100%	4%		Prov. Lab/CCDC	4	0	2	0	0	2	0	0	0	0	0	0	0	0	100%	
China, Shanxi	Prov. Lab	82	0	0	8	74	0	0	93%	8%		Prov. Lab/CCDC	0	-	-	-	-	-	-	-	-	-	-	-	-	-	-	
China, Sichuan	Prov. Lab	209	1	0	20	182	0	6	94%	9%		Prov. Lab/CCDC	5	0	0	0	0	2	0	0	3	0	0	0	0	0	100%	
China, Tianjin	Prov. Lab	29	1	0	0	28	0	0	100%	0%		Prov. Lab/CCDC	2	0	0	0	0	0	0	2	0	0	0	0	0	0	100%	
China, Xinjiang	Prov. Lab	76	2	0	9	62	2	1	99%	12%		Prov. Lab/CCDC	6	0	2	0	0	4	0	0	0	0	0	0	0	0	100%	
China, Yunnan	Prov. Lab	120	3	0	16	101	0	0	94%	12%		Prov. Lab/CCDC	5	0	2	0	0	2	0	0	1	0	0	0	0	0	60%	
China, Zhejiang	Prov. Lab	107	3	0	12	92	0	0	94%	9%		Prov. Lab/CCDC	8	0	2	1	0	2	0	0	1	0	2	0	0	0	100%	
China, Chongqing	Prov. Lab	59	1	0	7	48	0	3	96%	9%		CCDC	3	0	0	0	0	0	0	3	0	0	0	0	0	0	67%	
China, Guizhou	Prov. Lab	129	0	0	19	107	0	3	99%	13%		CCDC	2	0	2	0	0	0	0	0	0	0	0	0	0	0	100%	
China, Hainan	Prov. Lab	21	0	0	2	19	0	0	90%	7%		CCDC	2	0	0	0	0	2	0	0	0	0	0	0	0	0	-	
China, Hubei	Prov. Lab	104	0	0	12	91	0	1	95%	12%		CCDC	0	0	0	0	0	0	0	0	0	0	0	0	0	0	-	
China, Liaoning	Prov. Lab	51	0	0	2	46	0	3	100%	3%		CCDC	2	0	0	0	0	2	0	0	0	0	0	0	0	0	100%	
China, Neimongol	Prov. Lab	52	1	0	0	51	0	0	98%	0%		CCDC	0	-	-	-	-	-	-	-	-	-	-	-	-	-	-	
China, Ningxia	Prov. Lab	12	0	0	0	12	0	0	96%	0%		CCDC	2	0	0	0	0	0	0	2	0	0	0	0	0	0	100%	
China, Qinghai	Prov. Lab	15	0	0	1	14	0	0	100%	7%		CCDC	0	-	-	-	-	-	-	-	-	-	-	-	-	-	-	
China, Tibet	Prov. Lab	2	0	0	0	2	0	0	100%	0%		CCDC	0	-	-	-	-	-	-	-	-	-	-	-	-	-	-	
China, Hong Kong SAR	PHLC	7	0	0	0	7	-	-	91%	0%	20-Jul-15	PHLC	0	-	-	-	-	-	-	-	-	-	-	-	-	-	-	
China, Macao SAR	PHLC	0	-	-	-	-	-	-	-	-	20-Jul-15	PHLC	0	-	-	-	-	-	-	-	-	-	-	-	-	-	-	-
Japan	NIID	-	-	-	-	-	-	-	-	-	-	NIID	0	-	-	-	-	-	-	-	-	-	-	-	-	-	-	
Lao People's Democratic Republic	NIID	25	0	0	2	23	0	0	100%	8%	04-Sep-15	NIID	0	-	-	-	-	-	-	-	-	-	-	-	-	-	-	
Malaysia	IMR	81	0	0	5	76	0	0	99%	5%	19-Aug-15	IMR	0	-	-	-	-	-	-	-	-	-	-	-	-	-	-	
Mongolia	PHI	6	0	0	1	5	0	0	92%	17%	09-Sep-15	NIID	0	-	-	-	-	-	-	-	-	-	-	-	-	-	-	
New Zealand	IESR	4	0	0	0	4	0	0	100%	0%	03-Sep-15	IESR	0	-	-	-	-	-	-	-	-	-	-	-	-	-	-	
Papua New Guinea	VIDRL	13	1	0	3	8	1	0	90%	24%	04-Sep-15	VIDRL	1	0	1	0	0	0	0	0	0	0	0	0	0	0	100%	
Philippines	RITM	394	6	0	66	499	9	0	87%	12%	11-Sep-15	RITM	2	0	1	0	0	0	0	1	0	0	0	0	0	0	100%	
Republic of Korea	NIH	50	0	0	3	41	6	0	100%	7%	17-Aug-15	NIH	0	-	-	-	-	-	-	-	-	-	-	-	-	-	-	
Singapore	SGH	6	0	0	1	5	0	0	100%	8%	11-Aug-15	SGH	0	-	-	-	-	-	-	-	-	-	-	-	-	-	-	
Viet Nam (North)	NIHE	140	1	0	12	120	6	1	99%	8%	11-Sep-15	NIHE	2	0	2	0	0	0	0	0	0	0	0	0	0	0	100%	
Viet Nam (South)	PI	102	0	0	14	82	6	0	97%	15%	10-Sep-15	PI	0	-	-	-	-	-	-	-	-	-	-	-	-	-	-	
Pacific island countries and areas	VIDRL	3	0	0	0	2	1	0	50%	0%	11-Sep-15	VIDRL	0	-	-	-	-	-	-	-	-	-	-	-	-	-	-	
<b>Total</b>		<b>4037</b>	<b>52</b>	<b>0</b>	<b>406</b>	<b>3650</b>	<b>33</b>	<b>82</b>					<b>117</b>	<b>0</b>	<b>38</b>	<b>1</b>	<b>0</b>	<b>38</b>	<b>5</b>	<b>0</b>	<b>33</b>	<b>0</b>	<b>2</b>	<b>0</b>	<b>0</b>	<b>0</b>	<b>97%</b>	

1. CCDC (Chinese Center for Disease Control and Prevention, China); IESR (Institute of Environmental Science and Research, New Zealand); IMR (Institute of Medical Research, Malaysia); NIH (National Institute of Health, Republic of Korea); NIHE (National Institute of Hygiene and Epidemiology, Ha Noi, Viet Nam); NIID (National Institute of Infectious Diseases, Japan); PHI (Public Health Institute, Mongolia); PHLC (Public Health Laboratory Center, China, Hong Kong SAR); PI (Pasteur Institute, Ho Chi Minh, Viet Nam); RITM (Research Institute for Tropical Medicine, Philippines); SGH (Singapore General Hospital); VIDRL (Victorian Infectious Diseases Reference Laboratory, Australia)

2. NPEV growing in L20B cells

Table 3. Laboratory confirmation of polio isolates from environmental samples in 2014–2015 <sup>1</sup>

Country/area	Intratypic differentiation lab <sup>2</sup>	2014													2015														
		Total number of samples processed	Total number of samples with polio isolates	Type 1			Type 2			Type 3			NPEV	Pending ITD	Discordant pending sequencing	Total number of samples processed	Total number of samples with polio isolates	Type 1			Type 2			Type 3			NPEV	Pending ITD	Discordant pending sequencing
				Wild	Sabin	VDPV	Wild	Sabin	VDPV	Wild	Sabin	VDPV						Wild	Sabin	VDPV	Wild	Sabin	VDPV	Wild	Sabin	VDPV			
Australia	VIDRL	3	0	-	-	-	-	-	-	-	-	-	3	0	0	29	2	0	0	0	0	1	0	0	1	0	26	0	0
China (total)		167	167	0	79	0	0	129	2	0	115	0	0	0	0	0	0	0	0	0	0	0	0	0	0	0	0	0	0
China, Fujian	Prov. Lab/CCDC	14	14	0	1	0	0	4	0	0	0	0	0	0	0	0	-	-	-	-	-	-	-	-	-	-	-	-	
China, Guangdong	Prov. Lab/CCDC	48	48	0	21	0	0	22	0	0	15	0	0	0	0	0	-	-	-	-	-	-	-	-	-	-	-	-	
China, Heilongjiang	Prov. Lab/CCDC	18	18	0	11	0	0	37	1	0	47	0	0	0	0	0	-	-	-	-	-	-	-	-	-	-	-	-	
China, Shandong	Prov. Lab/CCDC	48	48	0	13	0	0	16	0	0	23	0	0	0	0	0	-	-	-	-	-	-	-	-	-	-	-	-	
China, Shanghai	Prov. Lab/CCDC	12	12	0	6	0	0	12	0	0	10	0	0	0	0	0	-	-	-	-	-	-	-	-	-	-	-	-	
China, Xinjiang	Prov. Lab/CCDC	27	27	0	27	0	0	38	1	0	20	0	0	0	0	0	-	-	-	-	-	-	-	-	-	-	-	-	
Malaysia	IMR	21	7	0	1	0	0	1	0	0	5	0	7	0	0	0	-	-	-	-	-	-	-	-	-	-	-	-	
<b>Total</b>		<b>191</b>	<b>174</b>	<b>0</b>	<b>80</b>	<b>0</b>	<b>0</b>	<b>130</b>	<b>2</b>	<b>0</b>	<b>120</b>	<b>0</b>	<b>10</b>	<b>0</b>	<b>0</b>	<b>29</b>	<b>2</b>	<b>0</b>	<b>0</b>	<b>0</b>	<b>0</b>	<b>1</b>	<b>0</b>	<b>0</b>	<b>1</b>	<b>0</b>	<b>26</b>	<b>0</b>	<b>0</b>

1. Based on year of collection of sample, if available. Otherwise, based on year of receipt at reference laboratory.

2. CCDC (Chinese Center for Disease Control and Prevention, China); IMR (Institute of Medical Research, Malaysia); VIDRL (Victorian Infectious Diseases Reference Laboratory, Australia)

Table 4. Vaccine-derived poliovirus specimens identified from laboratory testing, 2000-2015

Country/area	2000–2009 <sup>2</sup>	2010	2011	2012	2013	2014	2015
Cambodia	2006 (1 case) Total (2 cases)						
China	2009 (1 case) Total (27 cases)	aVDPV2 (5 cases) aVDPV3 (2 cases)	aVDPV1 (1 case) aVDPV2 (3 cases) cVDPV2 (2 cases) iVDPV2 (2 cases) iVDPV3 (1 case)	aVDPV1 (1 case) aVDPV2 (2 cases) cVDPV2 (3 cases) iVDPV2 + iVDPV3 (1 case)	aVDPV2 (1 case) iVDPV2 + iVDPV3 (1 case)	aVDPV1 (1 case) aVDPV2 (2 cases) iVDPV3 (1 case)	aVDPV1 (1 case) aVDPV2 (1 case) iVDPV2 (1 case)
China, Hong Kong SAR	2005 (3 cases)						
Japan	2005 (1 case) Total (2 cases)						
Lao People's Democratic Republic	2004 (3 cases)						
Mongolia	2003 (1 case)						
Philippines	2001 (3 cases)					aVDPV2 (1 case)	
Viet Nam				aVDPV2 (2 cases)			

1. Prefix letter refers to the VDPV category: "cVDPV" = circulating VDPV, "iVDPV" = immunodeficiency-associated VDPV, "aVDPV" = ambiguous VDPV, "?VDPV" = pending. Suffix number refers to the poliovirus serotype (types 1, 2 or 3).

2. Refers to year of last VDPV case, and aggregate total of VDPV cases for 2000-2009