

HIGHLIGHTS

Summary of the progress on the Polio Endgame Plan

Report by the WHO Secretariat
138th session of the WHO Executive Board

Strong progress continues to be made towards objectives of the Polio Eradication and Endgame Strategic Plan 2013–2018. In 2015 transmission of wild poliovirus was at the lowest levels in history with the fewest ever reported cases from the fewest ever affected countries. As of 15 December 2015, only 66 cases of wild poliovirus were reported for the year from only two countries: Afghanistan (17) and Pakistan (49). On 20 September 2015, the Global Commission for the Certification of Poliomyelitis Eradication declared that wild poliovirus type 2 has been eradicated. In October 2015 the Strategic Advisory Group of Experts on immunization recommended that all countries still using trivalent oral polio vaccine (tOPV) the global synchronized withdrawal of the type 2 component of OPV should occur between 17 April and 1 May 2016.

However, the challenges still exist. Outbreaks of circulating vaccine derived poliovirus (cVDPV) in four WHO regions (AFRO, EURO, SEARO, WPRO) illustrate serious gaps in routine immunization programmes of affected countries leading to large pockets of poliovirus susceptibility. To minimize accidental facility-associated risk of poliovirus exposure, all Member States should accelerate implementation of the WHO Global Action Plan by establishing an inventory of facilities holding poliovirus materials by end 2015 and destroying or containing all Sabin type 2 poliovirus materials by July 2016. Polio legacy planning should be accelerated at the national level.

See more at: http://apps.who.int/gb/ebwha/pdf_files/EB138/B138_25-en.pdf

CONTACT US

Expanded Programme on Immunization
Regional Office for the Western Pacific
World Health Organization
P.O. Box 2932, 1000 Manila, Philippines
Phone: +63 2 5288001
Fax: +63 2 5211036, 5260279
Email: WPR_EPIdata@wpro.who.int
Web: www.wpro.who.int/immunization

Chart 1. Non-polio AFP rate (per 100 000 persons < 15 years of age), 2013–2015

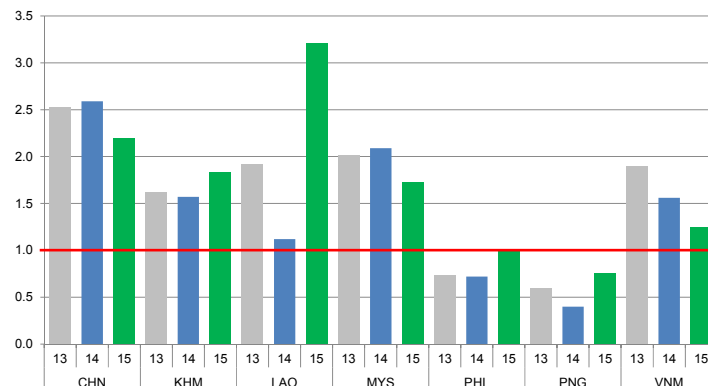


Chart 2. Adequate specimen collection rate, 2013–2015

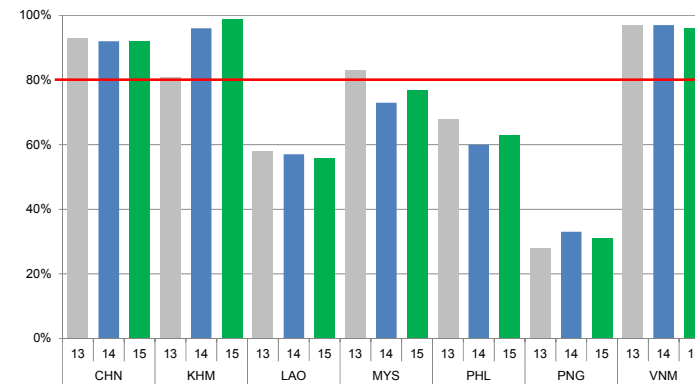


Chart 3. Percentage of reported AFP cases by number of polio vaccination doses, 2015

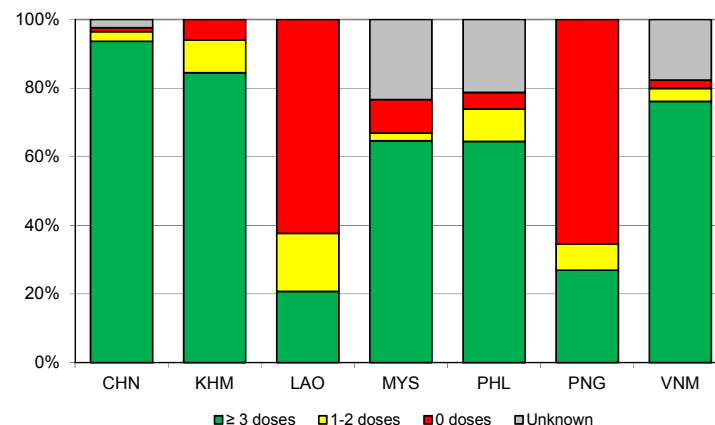
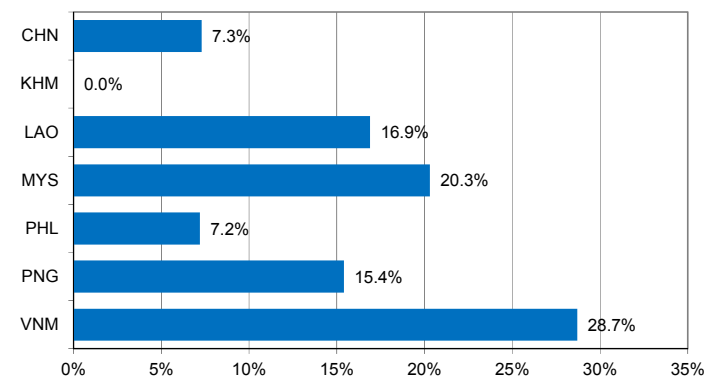


Chart 4. Percentage of reported AFP cases with pending classification > 90 days after onset, 2015



Note: Priority countries were selected for the charts. Official WHO acronyms have been used for abbreviation: CHN (China), KHM (Cambodia), LAO (Lao People's Democratic Republic), MYS (Malaysia), PHL (Philippines), PNG (Papua New Guinea), and VNM (Viet Nam).

Table 1. Classification of AFP cases with onset in 2015 and key surveillance indicators

Country/area	2014		2015							Indicators			Latest report date	Days since last report ⁴
	Total reported cases	Annual expected cases <15 years of age	Total reported cases	Classification				Pending		Non-polio AFP rate	% with adequate specimens ²	% investigated ≤ 2 days of notification ³		
				Confirmed wild poliovirus	Vaccine-derived poliovirus (VDPV)	Polio-compatible	Discarded (Non-polio)	Total	> 90 days ¹ # (%)					
														≤ 30
Australia	60	44	54	0	0	0	41	13	3 (5.6%)	1.23	24%	94%	24-Dec-15	12
Brunei Darussalam	4	1	3	0	0	0	2	1	0 (0.0%)	3.00	100%	100%	26-Nov-15	40
Cambodia	72	46	84	0	0	0	74	10	0 (0.0%)	1.83	99%	100%	01-Jan-16	4
China	5758	2234	4884	0	0	1	3704	1179	357 (7.3%)	2.19	92%	100%	30-Dec-15	6
China, Hong Kong SAR	19	8	10	0	0	0	9	1	0 (0.0%)	1.25	80%	100%	07-Dec-15	29
China, Macao SAR	1	1	1	0	0	0	1	0	0 (0.0%)	1.00	100%	100%	15-Dec-15	21
Japan	-	163	-	-	-	-	-	-	-	-	-	-	-	-
Lao People's Democratic Republic	28	24	77	0	5	0	38	34	13 (16.9%)	3.21	56%	97%	04-Jan-16	1
Malaysia	161	77	133	0	0	0	90	43	27 (20.3%)	1.73	77%	59%	29-Dec-15	7
Mongolia	9	9	9	0	0	0	7	2	0 (0.0%)	1.00	100%	100%	04-Jan-16	1
New Zealand	8	9	7	0	0	0	5	2	2 (28.6%)	0.78	29%	100%	09-Nov-15	57
Papua New Guinea	12	34	26	0	0	0	16	10	4 (15.4%)	0.76	31%	77%	11-Dec-15	25
Philippines	272	387	391	0	0	0	341	50	28 (7.2%)	1.01	63%	97%	11-Dec-15	25
Republic of Korea	88	70	78	0	0	0	67	11	0 (0.0%)	1.11	86%	88%	18-Dec-15	18
Singapore	8	6	7	0	0	0	7	0	0 (0.0%)	1.17	100%	86%	07-Dec-15	29
Viet Nam	361	231	289	0	0	0	168	121	83 (28.7%)	1.25	96%	94%	04-Dec-15	32
Pacific island countries and areas	15	10	13	0	0	0	7	6	1 (7.7%)	1.30	69%	100%	29-Dec-15	7
Total	6876	3354	6066	0	5	1	4577	1483	518 (8.5%)	1.81	89%	98%		

1. Number (%) of reported cases pending classification more than 90 days from date of onset of paralysis to date of last report
2. Percentage of reported cases with two stool specimens collected 24 hours apart and within 14 days of onset of paralysis
3. Percentage of reported cases investigated within two days of notification
4. Countries are expected to submit data at least once per month to WPRO

Green	Reached or surpassed target
Yellow	Nearly reached target: 0.5–0.99 for non-polio AFP rate; 60–79% for other indicators
Red	Substantially below target

Table 2. Laboratory investigation of AFP cases with onset in 2015 and key laboratory indicators

Country/area	Polio laboratory	Total no. of AFP cases with specimens	Virus isolation results								% specimens positive for NPEV	Latest report date	Intratyptic differentiation/ Sequencing laboratory ¹	No. of isolates received	Intratyptic differentiation (ITD)/sequencing results																		
			L20B positive	L20B positive + NPEV	NPEV only	Negative	Pending ≤ 14 days	Pending > 14 days	% results reported ≤ 14 days	Type 1					Type 2			Type 3			NPEV ²	Pending ITD	Discordant pending sequencing	% ITD results reported ≤ 7 days of receipt									
										Wild					Sabin	VDPV	Wild	Sabin	VDPV	Wild					Sabin	VDPV							
Australia	VIDRL	42	0	0	3	35	4	0	94%	5%	24-Dec-15	VIDRL	0	-	-	-	-	-	-	-	-	-	-	-	-	-	-	-	-	-	-	-	
Brunei Darussalam	VIDRL	3	0	0	0	2	1	0	100%	0%	24-Dec-15	VIDRL	0	-	-	-	-	-	-	-	-	-	-	-	-	-	-	-	-	-	-	-	
Cambodia	NIID	76	1	0	8	67	0	0	96%	10%	04-Jan-16	NIID	0	-	-	-	-	-	-	-	-	-	-	-	-	-	-	-	-	-	-	-	
China (total)		4826	58	1	445	4229	0	93	96%	8%	30-Dec-15		160	0	45	1	0	57	7	0	48	0	2	0	0	0	0	0	0	0	0	98%	
China, Anhui	Prov. Lab	278	2	0	17	245	0	14	97%	5%		Prov. Lab/CCDC	4	0	1	0	0	1	0	0	2	0	0	0	0	0	0	0	0	0	0	100%	
China, Beijing	Prov. Lab	30	3	0	0	27	0	0	100%	0%		Prov. Lab/CCDC	10	0	3	0	0	4	0	0	3	0	0	0	0	0	0	0	0	0	0	100%	
China, Fujian	Prov. Lab	135	3	0	24	107	0	1	99%	17%		Prov. Lab/CCDC	9	0	0	0	0	5	0	0	4	0	0	0	0	0	0	0	0	0	0	100%	
China, Gansu	Prov. Lab	93	0	0	12	80	0	1	97%	10%		Prov. Lab/CCDC	0	-	-	-	-	-	-	-	-	-	-	-	-	-	-	-	-	-	-	-	
China, Guangdong	Prov. Lab	323	8	0	12	298	0	5	96%	3%		Prov. Lab/CCDC	31	0	4	0	0	14	5	0	8	0	0	0	0	0	0	0	0	0	0	100%	
China, Guangxi	Prov. Lab	268	3	0	38	209	0	18	99%	12%		Prov. Lab/CCDC	6	0	0	0	0	2	0	0	4	0	0	0	0	0	0	0	0	0	0	100%	
China, Hebei	Prov. Lab	279	4	1	55	218	0	1	99%	16%		Prov. Lab/CCDC	9	0	6	0	0	3	0	0	0	0	0	0	0	0	0	0	0	0	0	100%	
China, Heilongjiang	Prov. Lab	125	0	0	4	118	0	3	100%	3%		Prov. Lab/CCDC	0	-	-	-	-	-	-	-	-	-	-	-	-	-	-	-	-	-	-	-	
China, Henan	Prov. Lab	469	8	0	44	414	0	3	90%	7%		Prov. Lab/CCDC	16	0	11	0	0	1	0	0	4	0	0	0	0	0	0	0	0	0	0	100%	
China, Hunan	Prov. Lab	272	1	0	30	240	0	1	98%	10%		Prov. Lab/CCDC	2	0	0	0	0	2	0	0	0	0	0	0	0	0	0	0	0	0	0	100%	
China, Jiangsu	Prov. Lab	211	4	0	4	179	0	24	98%	2%		Prov. Lab/CCDC	6	0	2	0	0	2	0	0	2	0	0	0	0	0	0	0	0	0	0	100%	
China, Jiangxi	Prov. Lab	161	6	0	4	151	0	0	100%	2%		Prov. Lab/CCDC	12	0	6	0	0	4	0	0	2	0	0	0	0	0	0	0	0	0	0	100%	
China, Jilin	Prov. Lab	48	0	0	5	42	0	1	98%	8%		Prov. Lab/CCDC	0	-	-	-	-	-	-	-	-	-	-	-	-	-	-	-	-	-	-	-	
China, Shaanxi	Prov. Lab	94	1	0	5	86	0	2	96%	4%		Prov. Lab/CCDC	2	0	2	0	0	0	0	0	0	0	0	0	0	0	0	0	0	0	0	100%	
China, Shandong	Prov. Lab	335	1	0	32	300	0	2	98%	8%		Prov. Lab/CCDC	1	0	0	0	0	1	0	0	0	0	0	0	0	0	0	0	0	0	0	100%	
China, Shanghai	Prov. Lab	38	0	0	1	37	0	0	100%	3%		Prov. Lab/CCDC	4	0	2	0	0	2	0	0	0	0	0	0	0	0	0	0	0	0	0	0	100%
China, Shanxi	Prov. Lab	132	0	0	12	120	0	0	90%	8%		Prov. Lab/CCDC	0	-	-	-	-	-	-	-	-	-	-	-	-	-	-	-	-	-	-	-	
China, Sichuan	Prov. Lab	340	1	0	25	306	0	8	94%	7%		Prov. Lab/CCDC	5	0	0	0	0	2	0	0	3	0	0	0	0	0	0	0	0	0	0	100%	
China, Tianjin	Prov. Lab	39	1	0	0	38	0	0	100%	0%		Prov. Lab/CCDC	2	0	0	0	0	0	0	0	2	0	0	0	0	0	0	0	0	0	0	100%	
China, Xinjiang	Prov. Lab	106	3	0	16	85	0	2	98%	15%		Prov. Lab/CCDC	6	0	2	0	0	4	0	0	0	0	0	0	0	0	0	0	0	0	0	100%	
China, Yunnan	Prov. Lab	201	3	0	22	175	0	1	92%	9%		Prov. Lab/CCDC	7	0	2	0	0	2	0	0	3	0	0	0	0	0	0	0	0	0	0	71%	
China, Zhejiang	Prov. Lab	172	3	0	18	151	0	0	95%	8%		Prov. Lab/CCDC	10	0	2	1	0	4	0	0	1	0	2	0	0	0	0	0	0	0	0	100%	
China, Chongqing	Prov. Lab	78	1	0	8	67	0	2	99%	7%		CCDC	3	0	0	0	0	0	0	0	3	0	0	0	0	0	0	0	0	0	0	67%	
China, Guizhou	Prov. Lab	194	0	0	23	170	0	1	98%	11%		CCDC	2	0	2	0	0	0	0	0	0	0	0	0	0	0	0	0	0	0	0	100%	
China, Hainan	Prov. Lab	33	0	0	2	31	0	0	88%	6%		CCDC	2	0	0	0	0	2	0	0	0	0	0	0	0	0	0	0	0	0	0	100%	
China, Hubei	Prov. Lab	166	0	0	21	145	0	0	96%	13%		CCDC	0	-	-	-	-	-	-	-	-	-	-	-	-	-	-	-	-	-	-	-	
China, Liaoning	Prov. Lab	80	0	0	5	73	0	2	96%	5%		CCDC	2	0	0	0	0	0	2	0	0	0	0	0	0	0	0	0	0	0	0	100%	
China, Neimongol	Prov. Lab	82	2	0	3	76	0	1	99%	2%		CCDC	5	0	0	0	0	2	0	0	3	0	0	0	0	0	0	0	0	0	0	100%	
China, Ningxia	Prov. Lab	23	0	0	1	22	0	0	98%	2%		CCDC	4	0	0	0	0	0	0	0	4	0	0	0	0	0	0	0	0	0	0	100%	
China, Qinghai	Prov. Lab	19	0	0	2	17	0	0	100%	11%		CCDC	0	-	-	-	-	-	-	-	-	-	-	-	-	-	-	-	-	-	-	-	
China, Tibet	Prov. Lab	2	0	0	0	2	0	0	100%	0%		CCDC	0	-	-	-	-	-	-	-	-	-	-	-	-	-	-	-	-	-	-	-	
China, Hong Kong SAR	PHLC	10	0	0	0	9	1	0	87%	0%	15-Dec-15	PHLC	0	-	-	-	-	-	-	-	-	-	-	-	-	-	-	-	-	-	-	-	
China, Macao SAR	PHLC	0	-	-	-	-	-	-	-	-	15-Dec-15	PHLC	0	-	-	-	-	-	-	-	-	-	-	-	-	-	-	-	-	-	-	-	-
Japan	NIID	-	-	-	-	-	-	-	-	-	-	NIID	-	-	-	-	-	-	-	-	-	-	-	-	-	-	-	-	-	-	-	-	
Lao People's Democratic Republic	NIID	64	9	1	6	48	0	0	98%	10%	04-Jan-16	NIID	18	0	5	6	0	2	0	0	5	0	0	0	0	0	0	0	0	0	0	100%	
Malaysia	IMR	131	0	0	11	120	0	0	98%	6%	10-Dec-15	IMR	0	-	-	-	-	-	-	-	-	-	-	-	-	-	-	-	-	-	-	-	-
Mongolia	PHI	9	0	0	2	7	0	0	94%	22%	21-Dec-15	NIID	0	-	-	-	-	-	-	-	-	-	-	-	-	-	-	-	-	-	-	-	-
New Zealand	IESR	4	0	0	0	4	0	0	100%	0%	01-Dec-15	IESR	0	-	-	-	-	-	-	-	-	-	-	-	-	-	-	-	-	-	-	-	-
Papua New Guinea	VIDRL	23	1	0	5	14	4	0	93%	23%	24-Dec-15	VIDRL	1	0	1	0	0	0	0	0	0	0	0	0	0	0	0	0	0	0	0	0	100%
Philippines	RITM	459	4	0	59	392	3	1	89%	10%	04-Jan-16	RITM	9	0	1	0	0	2	0	0	6	0	0	0	0	0	0	0	0	0	0	0	100%
Republic of Korea	NIH	78	0	0	8	67	3	0	89%	9%	18-Dec-15	NIH	0	-	-	-	-	-	-	-	-	-	-	-	-	-	-	-	-	-	-	-	-
Singapore	SGH	7	0	0	1	6	0	0	100%	7%	27-Nov-15	SGH	0	-	-	-	-	-	-	-	-	-	-	-	-	-	-	-	-	-	-	-	-
Viet Nam (North)	NIHE	210	3	0	20	182	4	1	99%	9%	30-Dec-15	NIHE	5	0	3	0	0	1	0	0	0	0	0	0	1	0	0	0	0	0	0	100%	
Viet Nam (South)	PI	150	0	0	16	129	5	0	98%	11%	11-Dec-15	PI	0	-	-	-	-	-	-	-	-	-	-	-	-	-	-	-	-	-	-	-	-
Pacific island countries and areas	VIDRL	14	1	0	3	10	0	0	92%	19%	24-Dec-																						

Table 3. Laboratory confirmation of polio isolates from environmental samples in 2014–2015 ¹

Country/area	Intratype differentiation lab ²	2014													2015														
		Total number of samples processed	Total number of samples with polio isolates	Type 1			Type 2			Type 3			NPEV	Pending ITD	Discordant pending sequencing	Total number of samples processed	Total number of samples with polio isolates	Type 1			Type 2			Type 3			NPEV	Pending ITD	Discordant pending sequencing
				Wild	Sabin	VDPV	Wild	Sabin	VDPV	Wild	Sabin	VDPV						Wild	Sabin	VDPV	Wild	Sabin	VDPV	Wild	Sabin	VDPV			
Australia	VIDRL	3	0	-	-	-	-	-	-	-	-	-	3	0	0	29	2	0	0	0	0	1	0	0	1	0	26	0	0
China (total) ³		167	167	0	79	0	0	129	2	0	115	0	0	0	0	186	68	0	121	0	0	122	0	0	116	0	287	0	7
China, Fujian	Prov. Lab/CCDC	14	14	0	1	0	0	4	0	0	0	0	0	0	0	15	7	0	0	0	0	7	0	0	0	0	2	0	0
China, Gansu	Prov. Lab/CCDC	0	0	-	-	-	-	-	-	-	-	-	-	-	-	8	5	0	3	0	0	0	0	0	6	0	8	0	0
China, Guangdong	Prov. Lab/CCDC	48	48	0	21	0	0	22	0	0	15	0	0	0	0	16	7	0	6	0	0	5	0	0	2	0	10	0	0
China, Guangxi	Prov. Lab/CCDC	0	0	-	-	-	-	-	-	-	-	-	-	-	-	29	8	0	6	0	0	3	0	0	23	0	60	0	0
China, Heilongjiang	Prov. Lab/CCDC	18	18	0	11	0	0	37	1	0	47	0	0	0	0	6	4	0	1	0	0	5	0	0	1	0	5	0	0
China, Shandong	Prov. Lab/CCDC	48	48	0	13	0	0	16	0	0	23	0	0	0	0	18	15	0	28	0	0	9	0	0	27	0	73	0	0
China, Shanghai	Prov. Lab/CCDC	12	12	0	6	0	0	12	0	0	10	0	0	0	0	4	4	0	0	0	0	3	0	0	1	0	13	0	0
China, Xinjiang	Prov. Lab/CCDC	27	27	0	27	0	0	38	1	0	20	0	0	0	0	18	18	0	77	0	0	90	0	0	56	0	116	0	7
China, Yunnan	Prov. Lab/CCDC	0	0	-	-	-	-	-	-	-	-	-	-	-	-	72	0	0	0	0	0	0	0	0	0	0	0	0	0
Malaysia	IMR	21	7	0	1	0	0	1	0	0	5	0	7	0	0	0	-	-	-	-	-	-	-	-	-	-	-	-	-
Total		191	174	0	80	0	0	130	2	0	120	0	10	0	0	215	70	0	121	0	0	123	0	0	117	0	313	0	7

1. Based on year of collection of sample, if available. Otherwise, based on year of receipt at reference laboratory.
2. CCDC (Chinese Center for Disease Control and Prevention, China); IMR (Institute of Medical Research, Malaysia); VIDRL (Victorian Infectious Diseases Reference Laboratory, Australia)
3. Reported data from China are currently being verified and may be amended in the next issue of the bulletin.

Table 4. Vaccine-derived poliovirus identified from laboratory testing², 2000-2015

Country/area	2000–2009 ³	2010	2011	2012	2013	2014	2015
Cambodia	2006 - 1 Total - 2						
China	2009 - 1 Total - 27	aVDPV2 (3 AFP + 1 contact + 1 non-AFP) aVDPV3 (1 AFP + 1 non-AFP)	aVDPV1 (1 AFP) aVDPV2 (2 AFP + 1 contact) cVDPV2 (1 AFP + 1 non-AFP) iVDPV2 (1 AFP + 1 non-AFP) iVDPV3 (1 AFP)	aVDPV1 (1 AFP) aVDPV2 (2 AFP) cVDPV2 (2 AFP + 1 contact) iVDPV2 + iVDPV3 (1 AFP)	aVDPV2 (1 non-AFP) iVDPV2 + iVDPV3 (1 AFP)	aVDPV1 (1 non-AFP) aVDPV2 (2 AFP) iVDPV3 (1 AFP)	aVDPV1 (1 AFP) aVDPV2 (1 AFP) iVDPV2 (1 AFP)
China, Hong Kong SAR	2005 - 3						
Japan	2005 - 1 Total - 2						
Lao People's Democratic Republic	2004 - 3						cVDPV1 (5 AFP + 20 contacts)
Mongolia	2003 - 1						
Philippines	2001 - 3					aVDPV2 (1 AFP)	
Viet Nam				aVDPV2 (2 AFP)			

1. Prefix letter refers to the VDPV category: "cVDPV" = circulating VDPV, "iVDPV" = immunodeficiency-associated VDPV, "aVDPV" = ambiguous VDPV, "?VDPV" = pending. Suffix number refers to the poliovirus serotype (types 1, 2 or 3).
2. Source of specimens could be AFP cases, contacts, or non-AFP cases
3. Refers to year of last VDPV case, and aggregate total of VDPV cases for 2000-2009