

HIGHLIGHTS

Outbreak response assessment in the Lao People's Democratic Republic

On 25-29 January 2016, the first outbreak response assessment in the Lao People's Democratic Republic was jointly conducted by WHO/UNICEF/US CDC team. The main objectives of the assessment were to assess quality and adequacy of outbreak response activities and to produce recommendations to assist the country to interrupt poliovirus transmission as soon as possible.

Based on the findings of the assessment the team concluded that the Lao People's Democratic Republic is possibly on track to interrupt transmission according to global guidelines. The main strengths of the response activities included the following:

- Response activities have been timely and comprehensive (in compliance with the global guidelines).
- Good local government support and inter-sectoral involvement (at the provincial/district level).
- Round-by-round comparisons of supplementary immunization activities (SIAs) revealed improvements in the quality and coverage of vaccination.
- Effective surveillance for acute flaccid paralysis (AFP) in place in the three high risk provinces.
- Engagement of leaders of local communities in social mobilization and communication activities.

The assessment team recommended to the Ministry of Health of the Lao People's Democratic Republic the following:

- Continue close cooperation/coordination with community leaders to assure completeness of the lists of the population to be targeted for vaccination.
- Conduct training on AFP surveillance for public health staff.
- Increase AFP awareness among clinicians and health workers.
- Initiate active surveillance at priority hospitals.
- Integrate communications activities into campaign plans and microplans.
- Continue using the opportunities of local cultural events and other creative ways of expanding the reach to different ethnic groups.

CONTACT US

Expanded Programme on Immunization
Regional Office for the Western Pacific
World Health Organization
P.O. Box 2932, 1000 Manila, Philippines
Phone: +63 2 5288001
Fax: +63 2 5211036, 5260279
Email: WPR_EPIData@wpro.who.int
Web: www.wpro.who.int/immunization

Chart 1. Non-polio AFP rate (per 100 000 persons < 15 years of age), 2013–2015

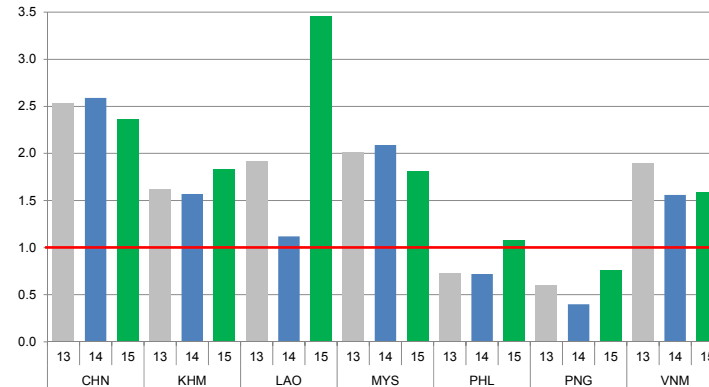


Chart 2. Adequate specimen collection rate, 2013–2015

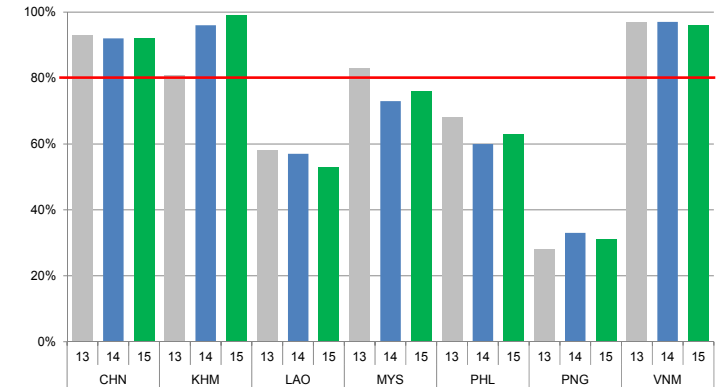


Chart 3. Percentage of reported AFP cases by number of polio vaccination doses, 2015

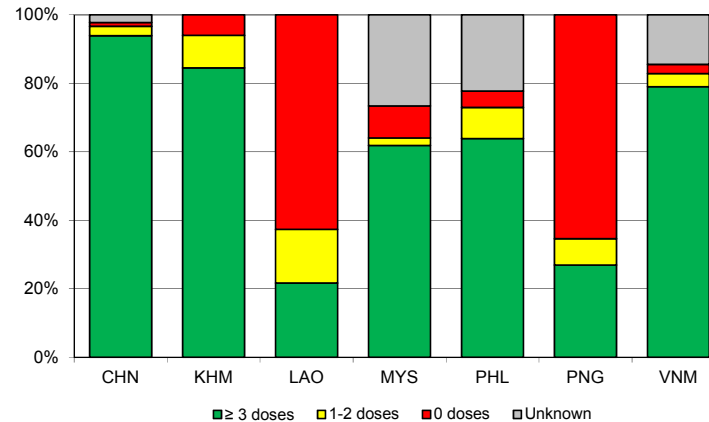
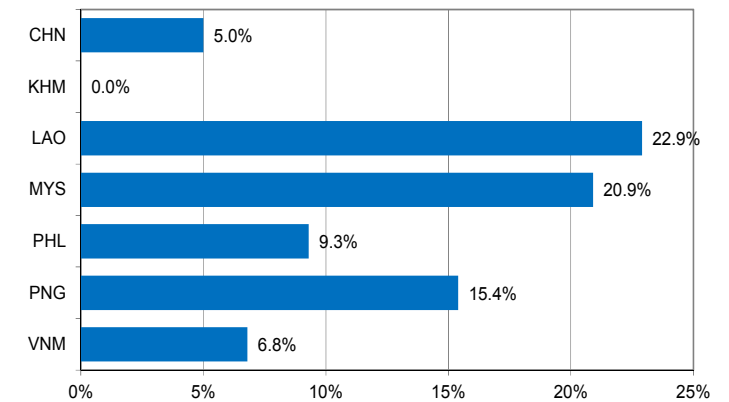


Chart 4. Percentage of reported AFP cases with pending classification > 90 days after onset, 2015



Note: Priority countries were selected for the charts. Official WHO acronyms have been used for abbreviation: CHN (China), KHM (Cambodia), LAO (Lao People's Democratic Republic), MYS (Malaysia), PHL (Philippines), PNG (Papua New Guinea), and VNM (Viet Nam).

Table 1. Classification of AFP cases with onset in 2015 and key surveillance indicators

Country/area	2014		2015							Indicators			Latest report date ⁴	Days since last report ⁵
	Total reported cases	Annual expected cases <15 years of age	Total reported cases	Classification				Pending		Non-polio AFP rate	% with adequate specimens ²	% investigated ≤ 2 days of notification ³		
				Confirmed wild poliovirus	Vaccine-derived poliovirus (VDPV)	Polio-compatible	Discarded (Non-polio)	Total	> 90 days ¹ # (%)					
≥ 1	≥ 80%	≥ 80%		≤ 30										
Australia	60	44	57	0	0	0	41	16	4 (7.0%)	1.30	25%	98%	29-Jan-16	3
Brunei Darussalam	4	1	3	0	0	0	2	1	0 (0.0%)	3.00	100%	100%	06-Jan-16	26
Cambodia	72	46	84	0	0	0	84	0	0 (0.0%)	1.83	99%	100%	01-Feb-16	-
China	5758	2234	5268	0	0	1	4245	1022	266 (5.0%)	2.36	92%	100%	27-Jan-16	5
China, Hong Kong SAR	19	8	10	0	0	0	10	0	0 (0.0%)	1.25	60%	100%	06-Jan-16	-
China, Macao SAR	1	1	1	0	0	0	1	0	0 (0.0%)	1.00	100%	100%	15-Jan-16	-
Japan	0	163	0	-	-	-	-	-	-	-	-	-	-	-
Lao People's Democratic Republic	28	24	83	0	7 ⁶	0	40	36	19 (22.9%)	3.46	53%	98%	19-Jan-16	13
Malaysia	161	77	139	0	0	0	101	38	29 (20.9%)	1.81	76%	57%	26-Jan-16	6
Mongolia	9	9	9	0	0	0	7	2	0 (0.0%)	1.00	100%	100%	04-Jan-16	28
New Zealand	8	9	7	0	0	0	5	2	2 (28.6%)	0.78	29%	100%	06-Jan-16	26
Papua New Guinea	12	34	26	0	0	0	16	10	4 (15.4%)	0.76	31%	77%	11-Dec-15	52
Philippines	272	387	418	0	0	0	355	63	39 (9.3%)	1.08	63%	97%	12-Jan-16	20
Republic of Korea	88	70	82	0	0	0	78	4	0 (0.0%)	1.17	85%	87%	15-Jan-16	17
Singapore	8	6	8	0	0	0	8	0	0 (0.0%)	1.33	100%	88%	05-Jan-16	-
Viet Nam	361	231	367	0	0	0	271	96	25 (6.8%)	1.59	96%	96%	06-Jan-16	26
Pacific island countries and areas	15	10	14	0	0	0	10	4	3 (21.4%)	1.40	71%	100%	26-Jan-16	6
Total	6876	3354	6576	0	7	1	5274	1294	391 (5.9%)	1.96	89%	98%		

1. Number (%) of reported cases pending classification more than 90 days from date of onset of paralysis to date of last report
2. Percentage of reported cases with two stool specimens collected 24 hours apart and within 14 days of onset of paralysis
3. Percentage of reported cases investigated within two days of notification
4. Report date is fixed as soon as all cases for the year have been classified
5. Countries are expected to submit data at least once per month to WPRO
6. Includes two cases that are 15 years old or older

Green	Reached or surpassed target
Yellow	Nearly reached target: 0.5–0.99 for non-polio AFP rate; 60–79% for other indicators
Red	Substantially below target

Table 3. Laboratory confirmation of polio isolates from environmental samples in 2014–2015 ¹

Country/area	Intratype differentiation lab ²	2014													2015														
		Total number of samples processed	Total number of samples with polio isolates	Type 1			Type 2			Type 3			NPEV	Pending ITD	Discordant pending sequencing	Total number of samples processed	Total number of samples with polio isolates	Type 1			Type 2			Type 3			NPEV	Pending ITD	Discordant pending sequencing
				Wild	Sabin	VDPV	Wild	Sabin	VDPV	Wild	Sabin	VDPV						Wild	Sabin	VDPV	Wild	Sabin	VDPV	Wild	Sabin	VDPV			
Australia	VIDRL	3	0	-	-	-	-	-	-	-	-	-	3	0	0	29	2	0	0	0	0	1	0	0	1	0	26	0	0
China (total) ³		167	167	0	79	0	0	129	2	0	115	0	0	0	0	186	68	0	121	0	0	122	0	0	116	0	287	0	7
China, Fujian	Prov. Lab/CCDC	14	14	0	1	0	0	4	0	0	0	0	0	0	0	15	7	0	0	0	0	7	0	0	0	2	0	0	
China, Gansu	Prov. Lab/CCDC	0	0	-	-	-	-	-	-	-	-	-	-	-	-	8	5	0	3	0	0	0	0	0	6	0	8	0	0
China, Guangdong	Prov. Lab/CCDC	48	48	0	21	0	0	22	0	0	15	0	0	0	0	16	7	0	6	0	0	5	0	0	2	0	10	0	0
China, Guangxi	Prov. Lab/CCDC	0	0	-	-	-	-	-	-	-	-	-	-	-	-	29	8	0	6	0	0	3	0	0	23	0	60	0	0
China, Heilongjiang	Prov. Lab/CCDC	18	18	0	11	0	0	37	1	0	47	0	0	0	0	6	4	0	1	0	0	5	0	0	1	0	5	0	0
China, Shandong	Prov. Lab/CCDC	48	48	0	13	0	0	16	0	0	23	0	0	0	0	18	15	0	28	0	0	9	0	0	27	0	73	0	0
China, Shanghai	Prov. Lab/CCDC	12	12	0	6	0	0	12	0	0	10	0	0	0	0	4	4	0	0	0	0	3	0	0	1	0	13	0	0
China, Xinjiang	Prov. Lab/CCDC	27	27	0	27	0	0	38	1	0	20	0	0	0	0	18	18	0	77	0	0	90	0	0	56	0	116	0	7
China, Yunnan	Prov. Lab/CCDC	0	0	-	-	-	-	-	-	-	-	-	-	-	-	72	0	0	0	0	0	0	0	0	0	0	0	0	0
Malaysia	IMR	21	7	0	1	0	0	1	0	0	5	0	7	0	0	0	-	-	-	-	-	-	-	-	-	-	-	-	-
Total		191	174	0	80	0	0	130	2	0	120	0	10	0	0	215	70	0	121	0	0	123	0	0	117	0	313	0	7

1. Based on year of collection of sample, if available. Otherwise, based on year of receipt at reference laboratory.
2. CCDC (Chinese Center for Disease Control and Prevention, China); IMR (Institute of Medical Research, Malaysia); VIDRL (Victorian Infectious Diseases Reference Laboratory, Australia)
3. Reported data from China are currently being verified and may be amended in the next issue of the bulletin.

Table 4. Vaccine-derived poliovirus identified from laboratory testing², 2000-2015

Country/area	2000–2009 ³	2010	2011	2012	2013	2014	2015
Cambodia	2006 - 1 Total - 2						
China	2009 - 1 Total - 27	aVDPV2 (3 AFP + 1 contact + 1 non-AFP) aVDPV3 (1 AFP + 1 non-AFP)	aVDPV1 (1 AFP) aVDPV2 (2 AFP + 1 contact) cVDPV2 (1 AFP + 1 non-AFP) iVDPV2 (1 AFP + 1 non-AFP) iMDPV3 (1 AFP)	aVDPV1 (1 AFP) aVDPV2 (2 AFP) cVDPV2 (2 AFP + 1 contact) iVDPV2 + iVDPV3 (1 AFP)	aVDPV2 (1 non-AFP) iVDPV2 + iVDPV3 (1 AFP)	aVDPV1 (1 non-AFP) aVDPV2 (2 AFP) iVDPV3 (1 AFP)	aVDPV1 (1 AFP) aVDPV2 (1 AFP) iVDPV2 (1 AFP)
China, Hong Kong SAR	2005 - 3						
Japan	2005 - 1 Total - 2						
Lao People's Democratic Republic	2004 - 3						cVDPV1 (7 AFP + 20 contacts)
Mongolia	2003 - 1						
Philippines	2001 - 3					aVDPV2 (1 AFP)	
Viet Nam				aVDPV2 (2 AFP)			

1. Prefix letter refers to the VDPV category: "cVDPV" = circulating VDPV, "iVDPV" = immunodeficiency-associated VDPV, "aVDPV" = ambiguous VDPV, "?VDPV" = pending. Suffix number refers to the poliovirus serotype (types 1, 2 or 3).
2. Source of specimens could be AFP cases, contacts, or non-AFP cases
3. Refers to year of last VDPV case, and aggregate total of VDPV cases for 2000-2009