

HIGHLIGHTS

Polio Legacy Planning

For over 25 years, the Global Polio Eradication Initiative (GPEI) has mobilized and trained millions of volunteers and health workers; reached remote and underserved households; mapped and brought health interventions to chronically neglected communities; and established standardized, real-time global surveillance and response capacity.

The knowledge, skills and infrastructure built to end polio are already helping to make dramatic progress on improving children's health – not only reducing the number of children paralyzed by polio by over 99%, but also decreasing the number dying from other preventable diseases in countries with strong polio eradication infrastructure. To make the most of this opportunity, it is crucial that governments, civil society, Ministries of Health, and donors transition some of the polio infrastructure to sustain a polio-free world and to help meet other health needs, particularly in places with weak health infrastructure. By identifying the overlap between what the polio program has to offer and country-level priorities for strengthening health systems, we can make a lasting difference to health beyond polio.

By beginning to plan now, we can keep the world polio-free and ensure that the investments made in ending polio have a broad and lasting impact on children's health and development, long after polio is gone.

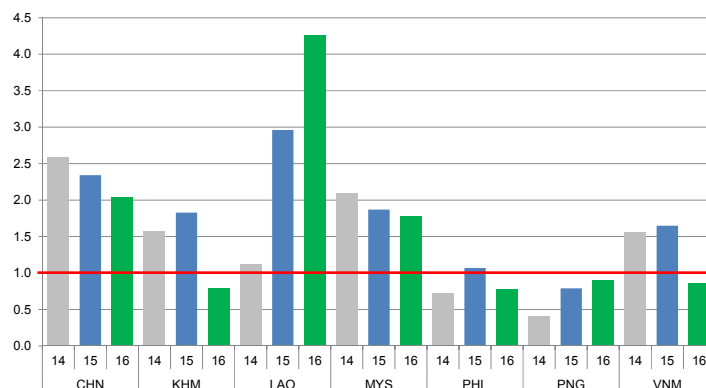
See more at:

<http://www.polioeradication.org/mediaroom/newsstories/Beyond-Polio/tabid/526/news/1393/Default.aspx>

CONTACT US

Expanded Programme on Immunization
Regional Office for the Western Pacific
World Health Organization
P.O. Box 2932, 1000 Manila, Philippines
Phone: +63 2 5288001
Fax: +63 2 5211036, 5260279
Email: WPR_EPIdata@wpro.who.int
Web: www.wpro.who.int/immunization

Chart 1. Non-polio AFP rate (per 100 000 persons < 15 years of age), 2014–2016*



* AFP rate annualized as of week 25

Chart 2. Adequate specimen collection rate, 2014–2016

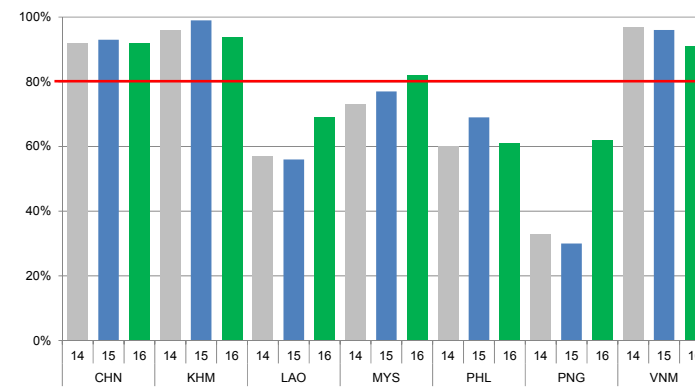


Chart 3. Percentage of reported AFP cases by number of polio vaccination doses, 2016

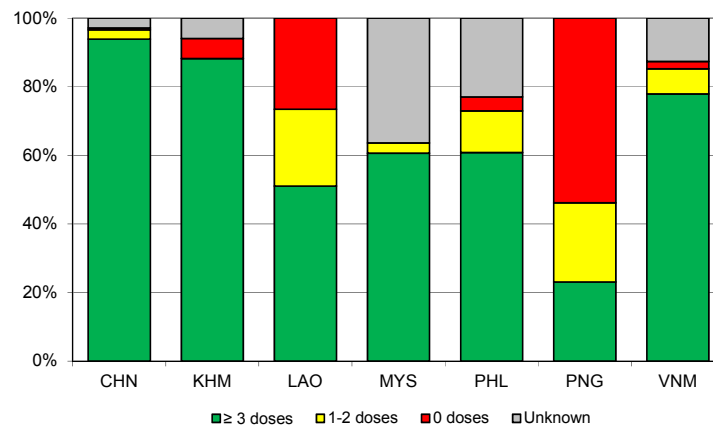
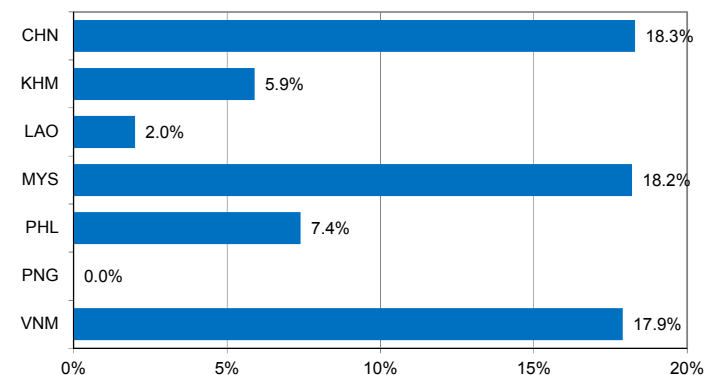


Chart 4. Percentage of reported AFP cases with pending classification > 90 days after onset, 2016



Note: Priority countries were selected for the charts. Official WHO acronyms have been used for abbreviation: CHN (China), KHM (Cambodia), LAO (Lao People's Democratic Republic), MYS (Malaysia), PHL (Philippines), PNG (Papua New Guinea), and VNM (Viet Nam).

Table 1A. Classification of AFP cases with onset in 2015 and key surveillance indicators

Country/area	2014		2015											
	Total reported cases	Annual expected cases <15 years of age	Total reported cases	Classification						Indicators			Latest report date ⁴	Days since last report ⁵
				Confirmed wild poliovirus	Vaccine-derived poliovirus (VDPV)	Polio-compatible	Discarded (Non-polio)	Pending		Non-polio AFP rate	% with adequate specimens ²	% investigated ≤ 2 days of notification ³		
								Total	> 90 days ¹ # (%)					≥ 1
Australia	60	44	53	0	0	0	53	0	0 (0.0%)	1.20	26%	100%	19-Feb-16	-
Brunei Darussalam	4	1	3	0	0	0	3	0	0 (0.0%)	3.00	100%	100%	18-Feb-16	-
Cambodia	72	46	84	0	0	0	84	0	0 (0.0%)	1.83	99%	100%	01-Feb-16	-
China	5758	2234	5217	0	0	1	5216	0	0 (0.0%)	2.34	93%	100%	18-May-16	-
China, Hong Kong SAR	19	8	10	0	0	0	10	0	0 (0.0%)	1.25	80%	100%	04-Feb-16	-
China, Macao SAR	1	1	1	0	0	0	1	0	0 (0.0%)	1.00	100%	100%	15-Jan-16	-
Japan	-	163	-	-	-	-	-	-	-	-	-	-	-	-
Lao People's Democratic Republic	28	24	71	0	8 ⁶	0	63	0	0 (0.0%)	2.96	56%	99%	11-May-16	-
Malaysia	161	77	144	0	0	0	144	0	0 (0.0%)	1.87	77%	79%	18-Apr-16	-
Mongolia	9	9	9	0	0	0	9	0	0 (0.0%)	1.00	100%	100%	02-Mar-16	-
New Zealand	8	9	7	0	0	0	7	0	0 (0.0%)	0.78	29%	100%	15-Apr-16	-
Papua New Guinea	12	34	27	0	0	0	27	0	0 (0.0%)	0.79	30%	78%	31-May-16	-
Philippines	272	387	413	0	0	0	413	0	0 (0.0%)	1.07	69%	98%	29-Mar-16	-
Republic of Korea	88	70	83	0	0	0	83	0	0 (0.0%)	1.19	86%	87%	22-Mar-16	-
Singapore	8	6	8	0	0	0	8	0	0 (0.0%)	1.33	100%	88%	03-Feb-16	-
Viet Nam	361	231	379	0	0	0	374	5	5 (1.3%)	1.64	96%	95%	13-Jun-16	8
Pacific island countries and areas	15	10	14	0	0	0	10	4	4 (28.6%)	1.40	71%	100%	11-Apr-16	71
Total	6876	3354	6523	0	8	1	6505	9	9 (0.1%)	1.94	90%	98%		

1. Number (%) of reported cases pending classification more than 90 days from date of onset of paralysis to date of last report

2. Percentage of reported cases with two stool specimens collected 24 hours apart and within 14 days of onset of paralysis

3. Percentage of reported cases investigated within two days of notification

4. Report date is fixed as soon as all cases for the year have been classified

5. Countries are expected to submit data at least once per month to WPRO

6. Includes three cases that are 15 years old or older

Green	Reached or surpassed target
Yellow	Nearly reached target: 0.5–0.99 for non-polio AFP rate; 60–79% for other indicators
Red	Substantially below target

Table 1B. Classification of AFP cases with onset in 2016 and key surveillance indicators

Country/area	2015	2016												
	Total reported cases	Annual expected cases <15 years of age	Total reported cases	Classification						Indicators			Latest report date	Days since last report ⁵
				Confirmed wild poliovirus	Vaccine-derived poliovirus (VDPV)	Polio-compatible	Discarded (Non-polio)	Pending		Non-polio AFP rate ²	% with adequate specimens ³	% investigated ≤ 2 days of notification ⁴		
								Total	> 90 days ¹ # (%)					
≥ 1	≥ 80%	≥ 80%	≤ 30											
Australia	53	45	28	0	0	0	5	23	9 (32.1%)	1.29	50%	86%	20-Jun-16	1
Brunei Darussalam	3	1	0	-	-	-	-	-	-	-	-	-	06-Jun-16	15
Cambodia	84	45	17	0	0	0	4	13	1 (5.9%)	0.79	94%	94%	09-May-16	43
China	5217	2234	2191	0	0	0	800	1391	402 (18.3%)	2.04	92%	100%	15-Jun-16	6
China, Hong Kong SAR	10	8	5	0	0	0	5	0	0 (0.0%)	1.30	80%	100%	06-Jun-16	15
China, Macao SAR	1	1	1	0	0	0	0	1	0 (0.0%)	2.08	100%	100%	12-May-16	40
Japan	-	163	-	-	-	-	-	-	-	-	-	-	-	-
Lao People's Democratic Republic	71	24	49	0	3 ⁶	0	31	15	1 (2.0%)	4.25	69%	96%	31-May-16	21
Malaysia	144	77	66	0	0	0	30	36	12 (18.2%)	1.78	82%	56%	07-Jun-16	14
Mongolia	9	8	3	0	0	0	2	1	0 (0.0%)	0.78	67%	100%	06-Jun-16	15
New Zealand	7	9	7	0	0	0	1	6	0 (0.0%)	1.62	43%	86%	26-May-16	26
Papua New Guinea	27	30	13	0	0	0	9	4	0 (0.0%)	0.90	62%	77%	07-Jun-16	14
Philippines	413	394	148	0	0	0	111	37	11 (7.4%)	0.78	61%	93%	16-Jun-16	5
Republic of Korea	83	69	30	0	0	0	23	7	0 (0.0%)	0.90	93%	100%	16-Jun-16	5
Singapore	8	6	2	0	0	0	2	0	0 (0.0%)	0.69	100%	100%	05-May-16	47
Viet Nam	379	231	95	0	0	0	21	74	17 (17.9%)	0.86	91%	95%	17-Jun-16	4
Pacific island countries and areas	14	10	7	0	0	0	3	4	1 (14.3%)	1.46	57%	100%	17-May-16	35
Total	6523	3355	2662	0	3	0	1047	1612	454 (17.1%)	1.65	89%	98%		

- Number (%) of reported cases pending classification more than 90 days from date of onset of paralysis to date of last report
- Annualized non-polio AFP rate per 100 000 population under 15 years of age
- Percentage of reported cases with two stool specimens collected 24 hours apart and within 14 days of onset of paralysis
- Percentage of reported cases investigated within two days of notification
- Countries are expected to submit data at least once per month to WPRO
- Includes two cases that are 15 years old or older

Green	Reached or surpassed target
Yellow	Nearly reached target: 0.5–0.99 for non-polio AFP rate; 60–79% for other indicators
Red	Substantially below target

Table 2A. Laboratory investigation of stool samples from AFP cases with onset in 2015 and key laboratory indicators

Country/area	Polio laboratory	Total no. of AFP cases with specimens	Results of virus isolation for AFP cases										Intratyptic differentiation/ Sequencing laboratory ¹	No. of isolates received	Results of intratyptic differentiation (ITD)/sequencing for virus isolates																
			L20B positive	L20B positive + NPEV	NPEV only	Negative	Pending ≤ 14 days	Pending > 14 days	% results reported ≤ 14 days	% specimens positive for NPEV	Latest report date	Type 1			Type 2			Type 3			NPEV ²	Pending ITD	Discordant pending sequencing	% ITD results reported ≤ 7 days of receipt							
												Wild			Sabin	VDPV	Wild	Sabin	VDPV	Wild					Sabin	VDPV					
Australia	VIDRL	45	0	0	4	41	0	0	95%	5%	04-Mar-16	VIDRL	0	-	-	-	-	-	-	-	-	-	-	-	-	-	-	-	-	-	-
Brunei Darussalam	VIDRL	3	0	0	1	2	0	0	100%	33%	04-Mar-16	VIDRL	0	-	-	-	-	-	-	-	-	-	-	-	-	-	-	-	-	-	-
Cambodia	NIID	84	1	0	10	73	0	0	96%	11%	14-Jan-16	NIID	0	-	-	-	-	-	-	-	-	-	-	-	-	-	-	-	-	-	-
China (total)		5172	68	1	471	4632	0	0	96%	8%	18-May-16		177	0	52	1	0	61	7	0	54	0	2	0	0	0	0	0	0	0	98%
China, Anhui	Prov. Lab	305	2	0	21	282	0	0	97%	6%		Prov. Lab/CCDC	4	0	1	0	0	1	0	0	2	0	0	0	0	0	0	0	0	100%	
China, Beijing	Prov. Lab	30	3	0	0	27	0	0	100%	0%		Prov. Lab/CCDC	10	0	3	0	0	4	0	0	3	0	0	0	0	0	0	0	0	100%	
China, Fujian	Prov. Lab	158	4	0	25	129	0	0	99%	15%		Prov. Lab/CCDC	11	0	0	0	0	7	0	0	4	0	0	0	0	0	0	0	0	100%	
China, Gansu	Prov. Lab	80	0	0	10	70	0	0	95%	9%		Prov. Lab/CCDC	0	-	-	-	-	-	-	-	-	-	-	-	-	-	-	-	-	-	
China, Guangdong	Prov. Lab	356	9	0	13	334	0	0	96%	3%		Prov. Lab/CCDC	31	0	4	0	0	14	5	0	8	0	0	0	0	0	0	0	0	100%	
China, Guangxi	Prov. Lab	279	3	0	42	234	0	0	98%	12%		Prov. Lab/CCDC	6	0	0	0	0	2	0	0	4	0	0	0	0	0	0	0	0	100%	
China, Hebei	Prov. Lab	303	6	1	58	238	0	0	99%	15%		Prov. Lab/CCDC	10	0	7	0	0	3	0	0	0	0	0	0	0	0	0	0	0	100%	
China, Heilongjiang	Prov. Lab	129	1	0	5	123	0	0	100%	4%		Prov. Lab/CCDC	1	0	0	0	0	0	0	0	1	0	0	0	0	0	0	0	0	100%	
China, Henan	Prov. Lab	503	8	0	48	447	0	0	90%	7%		Prov. Lab/CCDC	16	0	11	0	0	1	0	0	4	0	0	0	0	0	0	0	0	100%	
China, Hunan	Prov. Lab	295	1	0	33	261	0	0	98%	10%		Prov. Lab/CCDC	2	0	0	0	0	2	0	0	0	0	0	0	0	0	0	0	0	100%	
China, Jiangsu	Prov. Lab	234	4	0	4	226	0	0	99%	2%		Prov. Lab/CCDC	6	0	2	0	0	2	0	0	2	0	0	0	0	0	0	0	0	100%	
China, Jiangxi	Prov. Lab	177	6	0	4	167	0	0	100%	2%		Prov. Lab/CCDC	12	0	6	0	0	4	0	0	2	0	0	0	0	0	0	0	0	100%	
China, Jilin	Prov. Lab	51	0	0	5	46	0	0	98%	7%		Prov. Lab/CCDC	0	-	-	-	-	-	-	-	-	-	-	-	-	-	-	-	-	-	
China, Shaanxi	Prov. Lab	98	1	0	5	92	0	0	96%	4%		Prov. Lab/CCDC	2	0	2	0	0	0	0	0	0	0	0	0	0	0	0	0	0	100%	
China, Shandong	Prov. Lab	371	1	0	34	336	0	0	98%	7%		Prov. Lab/CCDC	1	0	0	0	0	1	0	0	0	0	0	0	0	0	0	0	0	100%	
China, Shanghai	Prov. Lab	39	0	0	1	38	0	0	100%	3%		Prov. Lab/CCDC	4	0	2	0	0	2	0	0	0	0	0	0	0	0	0	0	0	100%	
China, Shanxi	Prov. Lab	126	0	0	12	114	0	0	90%	8%		Prov. Lab/CCDC	0	-	-	-	-	-	-	-	-	-	-	-	-	-	-	-	-	-	
China, Sichuan	Prov. Lab	359	1	0	25	333	0	0	94%	6%		Prov. Lab/CCDC	5	0	0	0	0	2	0	0	3	0	0	0	0	0	0	0	0	100%	
China, Tianjin	Prov. Lab	42	1	0	0	41	0	0	100%	0%		Prov. Lab/CCDC	2	0	0	0	0	0	0	0	2	0	0	0	0	0	0	0	0	100%	
China, Xinjiang	Prov. Lab	114	3	0	16	95	0	0	98%	13%		Prov. Lab/CCDC	6	0	2	0	0	4	0	0	0	0	0	0	0	0	0	0	0	100%	
China, Yunnan	Prov. Lab	212	7	0	21	184	0	0	93%	9%		Prov. Lab/CCDC	16	0	6	0	0	4	0	0	6	0	0	0	0	0	0	0	0	86%	
China, Zhejiang	Prov. Lab	187	3	0	18	166	0	0	95%	8%		Prov. Lab/CCDC	10	0	2	1	0	4	0	0	1	0	2	0	0	0	0	0	100%		
China, Chongqing	Prov. Lab	75	1	0	8	66	0	0	99%	7%		CCDC	3	0	0	0	0	0	0	0	3	0	0	0	0	0	0	0	0	67%	
China, Guizhou	Prov. Lab	210	0	0	27	183	0	0	99%	11%		CCDC	2	0	2	0	0	0	0	0	0	0	0	0	0	0	0	0	0	100%	
China, Hainan	Prov. Lab	39	0	0	3	36	0	0	90%	6%		CCDC	2	0	0	0	0	2	0	0	0	0	0	0	0	0	0	0	0	100%	
China, Hubei	Prov. Lab	179	1	0	22	156	0	0	96%	12%		CCDC	4	0	2	0	0	0	0	0	2	0	0	0	0	0	0	0	0	100%	
China, Liaoning	Prov. Lab	91	0	0	5	86	0	0	97%	4%		CCDC	2	0	0	0	0	0	2	0	0	0	0	0	0	0	0	0	0	100%	
China, Neimongol	Prov. Lab	89	2	0	3	84	0	0	99%	2%		CCDC	5	0	0	0	0	2	0	0	3	0	0	0	0	0	0	0	0	100%	
China, Ningxia	Prov. Lab	20	0	0	1	19	0	0	98%	3%		CCDC	4	0	0	0	0	0	0	0	4	0	0	0	0	0	0	0	0	100%	
China, Qinghai	Prov. Lab	19	0	0	2	17	0	0	100%	11%		CCDC	0	-	-	-	-	-	-	-	-	-	-	-	-	-	-	-	-	-	
China, Tibet	Prov. Lab	2	0	0	0	2	0	0	100%	0%		CCDC	0	-	-	-	-	-	-	-	-	-	-	-	-	-	-	-	-	-	
China, Hong Kong SAR	PHLC	10	0	0	0	10	0	0	84%	0%	19-Jan-16	PHLC	0	-	-	-	-	-	-	-	-	-	-	-	-	-	-	-	-	-	
China, Macao SAR	PHLC	0	-	-	-	-	-	-	-	-	19-Jan-16	PHLC	0	-	-	-	-	-	-	-	-	-	-	-	-	-	-	-	-	-	-
Japan	NIID	-	-	-	-	-	-	-	-	-	-	NIID	-	-	-	-	-	-	-	-	-	-	-	-	-	-	-	-	-	-	
Lao People's Democratic Republic	NIID	76	11	2	7	56	0	0	99%	10%	07-Mar-16	NIID	18	0	5	6	0	2	0	0	5	0	0	0	0	0	0	0	0	100%	
Malaysia	IMR	147	0	0	11	136	0	0	98%	5%	11-Feb-16	IMR	0	-	-	-	-	-	-	-	-	-	-	-	-	-	-	-	-	-	
Mongolia	PHI	9	0	0	2	7	0	0	94%	22%	11-Jan-16	NIID	0	-	-	-	-	-	-	-	-	-	-	-	-	-	-	-	-	-	
New Zealand	IESR	4	0	0	0	4	0	0	100%	0%	20-Jan-16	IESR	0	-	-	-	-	-	-	-	-	-	-	-	-	-	-	-	-	-	
Papua New Guinea	VIDRL	25	1	0	6	18	0	0	95%	21%	01-Feb-16	VIDRL	1	0	1	0	0	0	0	0	0	0	0	0	0	0	0	0	0	100%	
Philippines	RITM	483	4	0	61	418	0	0	89%	10%	16-Mar-16	RITM	9	0	1	0	0	2	0	0	6	0	0	0	0	0	0	0	0	100%	
Republic of Korea	NIH	83	0	0	8	75	0	0	87%	8%	22-Mar-16	NIH	0	-	-	-	-	-	-	-	-	-	-	-	-	-	-	-	-	-	
Singapore	SGH	8	0	0	1	7	0	0	100%	6%	15-Jan-16	SGH	0	-	-	-	-	-	-	-	-	-	-	-	-	-	-	-	-	-	
Viet Nam (North)	NIHE	211	3	0	20	188	0	0	99%	9%	12-Jan-16	NIHE	7	0	4	0	0	2	0	0	0	0	1	0	0	0	0	0	0	100%	
Viet Nam (South)	PI	175	0	0	17	158	0	0	98%	10%	16-Feb-16	PI	0	-	-	-	-	-	-	-	-	-	-	-	-	-	-	-	-	-	
Pacific island countries and areas	VIDRL	15	1	0	3	11	0	0	93%	18%	01-Feb-16	VIDRL	2	0	0	0	0	0	0	0	2	0	0	0	0	0	0	0	0	100%	
Total		6550	89	3	622	5836	0	0	95%	8%			214	0	63	7	0	67	7	0	67	0	3	0	0	0	0	0	98%		

1. CCDC (Chinese Center for Disease Control and Prevention, China); IESR (Institute of Environmental Science and Research, New Zealand); IMR (Institute of Medical Research, Malaysia); NIH (National Institute of Health, Republic of Korea); NIHE (National Institute of Hygiene and Epidemiology, Ha Noi, Viet Nam); NIID (National Institute of Infectious Diseases, Japan); PHI (Public Health Institute, Mongolia); PHLC (Public Health Laboratory Center, China,

Table 2B. Laboratory investigation of stool samples from AFP cases with onset in 2016 and key laboratory indicators

Country/area	Polio laboratory	Total no. of AFP cases with specimens	Results of virus isolation for AFP cases									Intratyptic differentiation/ Sequencing laboratory ¹	No. of isolates received	Results of intratyptic differentiation (ITD)/sequencing for virus isolates																
			L20B positive	L20B positive + NPEV	NPEV only	Negative	Pending ≤ 14 days	Pending > 14 days	% results reported ≤ 14 days	% specimens positive for NPEV	Latest report date			Type 1			Type 2			Type 3			NPEV ²	Pending ITD	Discordant pending sequencing	% ITD results reported ≤ 7 days of receipt				
														Wild	Sabin	VDPV	Wild	Sabin	VDPV	Wild	Sabin	VDPV								
Australia	VIDRL	21	0	0	2	19	0	0	92%	5%	16-Jun-16	VIDRL	0	-	-	-	-	-	-	-	-	-	-	-	-	-	-	-	-	-
Brunei Darussalam	VIDRL	0	-	-	-	-	-	-	-	-	16-Jun-16	VIDRL	0	-	-	-	-	-	-	-	-	-	-	-	-	-	-	-	-	-
Cambodia	NIID	17	1	0	3	13	0	0	94%	15%	25-May-16	NIID	2	0	0	0	0	2	0	0	0	0	0	0	0	0	0	0	0	100%
China (total)		2157	23	0	109	1978	0	47	95%	4%	15-Jun-16		65	0	7	0	0	16	0	0	33	0	4	5	0	0	0	0	98%	
China, Anhui	Prov. Lab	98	0	0	3	94	0	1	100%	3%		Prov. Lab/CCDC	0	-	-	-	-	-	-	-	-	-	-	-	-	-	-	-	-	
China, Beijing	Prov. Lab	15	0	0	0	15	0	0	100%	0%		Prov. Lab/CCDC	0	-	-	-	-	-	-	-	-	-	-	-	-	-	-	-	-	
China, Fujian	Prov. Lab	68	2	0	1	65	0	0	100%	1%		Prov. Lab/CCDC	7	0	0	0	0	0	0	2	0	0	5	0	0	0	0	100%		
China, Gansu	Prov. Lab	43	2	0	0	40	0	1	95%	0%		Prov. Lab/CCDC	6	0	0	0	0	3	0	0	3	0	0	0	0	0	0	80%		
China, Guangdong	Prov. Lab	168	2	0	5	161	0	0	81%	2%		Prov. Lab/CCDC	2	0	0	0	0	1	0	0	1	0	0	0	0	0	0	100%		
China, Guangxi	Prov. Lab	125	0	0	10	113	0	2	100%	6%		Prov. Lab/CCDC	0	-	-	-	-	-	-	-	-	-	-	-	-	-	-	-	-	
China, Hebei	Prov. Lab	112	1	0	7	103	0	1	98%	5%		Prov. Lab/CCDC	2	0	0	0	0	0	0	2	0	0	0	0	0	0	0	100%		
China, Heilongjiang	Prov. Lab	40	0	0	1	39	0	0	98%	3%		Prov. Lab/CCDC	0	-	-	-	-	-	-	-	-	-	-	-	-	-	-	-	-	
China, Henan	Prov. Lab	150	1	0	15	134	0	0	81%	8%		Prov. Lab/CCDC	6	0	0	0	0	0	0	2	0	4	0	0	0	0	0	100%		
China, Hunan	Prov. Lab	102	1	0	9	91	0	1	100%	8%		Prov. Lab/CCDC	2	0	0	0	0	0	0	2	0	0	0	0	0	0	0	100%		
China, Jiangsu	Prov. Lab	73	0	0	2	71	0	0	100%	3%		Prov. Lab/CCDC	0	-	-	-	-	-	-	-	-	-	-	-	-	-	-	-	-	
China, Jiangxi	Prov. Lab	97	1	0	5	91	0	0	100%	4%		Prov. Lab/CCDC	2	0	1	0	0	0	0	1	0	0	0	0	0	0	0	100%		
China, Jilin	Prov. Lab	20	0	0	0	18	0	2	100%	0%		Prov. Lab/CCDC	0	-	-	-	-	-	-	-	-	-	-	-	-	-	-	-	-	
China, Shaanxi	Prov. Lab	47	0	0	2	38	0	7	95%	3%		Prov. Lab/CCDC	0	-	-	-	-	-	-	-	-	-	-	-	-	-	-	-	-	
China, Shandong	Prov. Lab	134	2	0	5	127	0	0	99%	3%		Prov. Lab/CCDC	5	0	0	0	0	2	0	0	3	0	0	0	0	0	0	100%		
China, Shanghai	Prov. Lab	20	1	0	0	19	0	0	100%	0%		Prov. Lab/CCDC	4	0	0	0	0	2	0	0	2	0	0	0	0	0	0	100%		
China, Shanxi	Prov. Lab	81	3	0	0	77	0	1	98%	0%		Prov. Lab/CCDC	9	0	4	0	0	0	0	0	5	0	0	0	0	0	0	100%		
China, Sichuan	Prov. Lab	183	3	0	20	158	0	2	97%	9%		Prov. Lab/CCDC	5	0	0	0	0	2	0	0	3	0	0	0	0	0	0	100%		
China, Tianjin	Prov. Lab	16	0	0	0	16	0	0	100%	0%		Prov. Lab/CCDC	0	-	-	-	-	-	-	-	-	-	-	-	-	-	-	-	-	
China, Xinjiang	Prov. Lab	41	1	0	0	37	0	3	97%	0%		Prov. Lab/CCDC	4	0	0	0	0	2	0	0	2	0	0	0	0	0	0	100%		
China, Yunnan	Prov. Lab	129	0	0	3	115	0	11	87%	2%		Prov. Lab/CCDC	0	-	-	-	-	-	-	-	-	-	-	-	-	-	-	-	-	
China, Zhejiang	Prov. Lab	75	1	0	1	73	0	0	99%	1%		Prov. Lab/CCDC	3	0	0	0	0	2	0	0	1	0	0	0	0	0	0	100%		
China, Chongqing	Prov. Lab	33	0	0	1	30	0	2	100%	2%		CCDC	0	-	-	-	-	-	-	-	-	-	-	-	-	-	-	-	-	
China, Guizhou	Prov. Lab	83	1	0	4	68	0	10	97%	6%		CCDC	6	0	2	0	0	2	0	0	2	0	0	0	0	0	0	100%		
China, Hainan	Prov. Lab	17	0	0	2	15	0	0	94%	9%		CCDC	0	-	-	-	-	-	-	-	-	-	-	-	-	-	-	-	-	
China, Hubei	Prov. Lab	87	0	0	9	77	0	1	97%	9%		CCDC	0	-	-	-	-	-	-	-	-	-	-	-	-	-	-	-	-	
China, Liaoning	Prov. Lab	39	0	0	1	36	0	2	99%	1%		CCDC	0	-	-	-	-	-	-	-	-	-	-	-	-	-	-	-	-	
China, Neimongol	Prov. Lab	27	0	0	1	26	0	0	93%	4%		CCDC	0	-	-	-	-	-	-	-	-	-	-	-	-	-	-	-	-	
China, Ningxia	Prov. Lab	13	0	0	0	13	0	0	92%	0%		CCDC	0	-	-	-	-	-	-	-	-	-	-	-	-	-	-	-	-	
China, Qinghai	Prov. Lab	19	0	0	2	17	0	0	92%	8%		CCDC	0	-	-	-	-	-	-	-	-	-	-	-	-	-	-	-	-	
China, Tibet	Prov. Lab	2	1	0	0	1	0	0	100%	0%		CCDC	2	0	0	0	0	0	0	2	0	0	0	0	0	0	0	100%		
China, Hong Kong SAR	PHLC	5	0	0	0	5	0	0	82%	0%	31-May-16	PHLC	0	-	-	-	-	-	-	-	-	-	-	-	-	-	-	-	-	
China, Macao SAR	PHLC	0	-	-	-	-	-	-	-	-	31-May-16	PHLC	0	-	-	-	-	-	-	-	-	-	-	-	-	-	-	-	-	
Japan	NIID	-	-	-	-	-	-	-	-	-	-	NIID	-	-	-	-	-	-	-	-	-	-	-	-	-	-	-	-	-	
Lao People's Democratic Republic	NIID	93	13	0	7	73	0	0	99%	7%	15-Jun-16	NIID	24	0	9	4	0	3	0	0	8	0	0	0	0	0	0	100%		
Malaysia	IMR	55	0	0	1	54	0	0	99%	2%	09-May-16	IMR	0	-	-	-	-	-	-	-	-	-	-	-	-	-	-	-	-	
Mongolia	PHI	4	0	0	0	4	0	0	88%	0%	21-Jun-16	NIID	0	-	-	-	-	-	-	-	-	-	-	-	-	-	-	-	-	
New Zealand	IESR	5	0	0	0	4	1	0	100%	0%	06-May-16	IESR	0	-	-	-	-	-	-	-	-	-	-	-	-	-	-	-	-	
Papua New Guinea	VIDRL	10	0	0	2	8	0	0	100%	22%	16-Jun-16	VIDRL	0	-	-	-	-	-	-	-	-	-	-	-	-	-	-	-		
Philippines	RITM	175	3	0	15	144	13	0	95%	7%	14-Jun-16	RITM	4	0	0	0	0	3	0	0	1	0	0	0	0	0	0	100%		
Republic of Korea	NIH	28	0	0	2	23	3	0	94%	8%	24-May-16	NIH	0	-	-	-	-	-	-	-	-	-	-	-	-	-	-	-		
Singapore	SGH	3	0	0	0	2	1	0	100%	0%	17-Jun-16	SGH	0	-	-	-	-	-	-	-	-	-	-	-	-	-	-	-		
Viet Nam (North)	NIHE	70	2	0	12	51	5	0	96%	16%	17-Jun-16	NIHE	2	0	1	0	0	0	0	0	1	0	0	0	0	0	0	100%		
Viet Nam (South)	PI	43	2	0	6	28	7	0	96%	15%	14-Jun-16	PI	6	0	0	0	0	2	0	0	4	0	0	0	0	0	0	100%		
Pacific island countries and areas	VIDRL	8	0	0	3	5	0	0	94%	22%	16-Jun-16	VIDRL	0	-	-	-	-	-	-	-	-	-	-	-	-	-	-	-		
Total		2694	44	0	162	2411	30	47	95%	4%			103	0	17	4	0	26	0	0	47	0	4	5	0	0	99%			

1. CCDC (Chinese Center for Disease Control and Prevention, China); IESR (Institute of Environmental Science and Research, New Zealand); IMR (Institute of Medical Research, Malaysia); NIH (National Institute of Health, Republic of Korea); NIHE (National Institute of Hygiene and Epidemiology, Ha Noi, Viet Nam); NIID (National Institute of Infectious Diseases, Japan); PHI (Public Health Institute, Mongolia); PHLC (Public Health Laboratory Center, China, Hong Kong SAR); PI (Pasteur Institute, Ho Chi Minh, Viet Nam); RITM (Research Institute for Tropical Medicine, Philippines); SGH (Singapore General Hospital); VIDRL (Victorian Infectious Diseases Reference Laboratory, Australia)

2. NPEV growing in L20B cells

Table 3. Laboratory confirmation of polio isolates from environmental samples in 2014–2015 ¹

Country/area	Intratyptic differentiation lab ²	2014													2015														
		Total number of samples processed	Total number of samples with polio isolates	Polio isolates									NPEV	Pending ITD	Discordant pending sequencing	Total number of samples processed	Total number of samples with polio isolates	Polio isolates									NPEV	Pending ITD	Discordant pending sequencing
				Type 1			Type 2			Type 3								Type 1			Type 2			Type 3					
				Wild	Sabin	VDPV	Wild	Sabin	VDPV	Wild	Sabin	VDPV						Wild	Sabin	VDPV	Wild	Sabin	VDPV	Wild	Sabin	VDPV			
Australia	VIDRL	3	0	-	-	-	-	-	-	-	-	-	3	0	0	29	2	0	0	0	0	1	0	0	1	0	26	0	0
China (total) ³		167	167	0	79	0	0	129	2	0	115	0	0	0	0	1486	630	0	193	0	0	243	1	0	274	0	851	5	35
China, Fujian	Prov. Lab/CCDC	14	14	0	1	0	0	4	0	0	0	0	0	0	0	77	13	0	0	0	0	12	0	0	1	0	64	0	0
China, Gansu	Prov. Lab/CCDC	0	0	-	-	-	-	-	-	-	-	-	-	-	-	88	46	0	11	0	0	9	0	0	28	0	37	5	0
China, Guangdong	Prov. Lab/CCDC	48	48	0	21	0	0	22	0	0	15	0	0	0	0	171	43	0	11	0	0	24	1	0	7	0	128	0	0
China, Guangxi	Prov. Lab/CCDC	0	0	-	-	-	-	-	-	-	-	-	-	-	-	261	71	0	10	0	0	12	0	0	52	0	190	0	0
China, Heilongjiang	Prov. Lab/CCDC	18	18	0	11	0	0	37	1	0	47	0	0	0	0	47	20	0	2	0	0	16	0	0	2	0	27	0	0
China, Shandong	Prov. Lab/CCDC	48	48	0	13	0	0	16	0	0	23	0	0	0	0	305	108	0	43	0	0	25	0	0	40	0	197	0	0
China, Shanghai	Prov. Lab/CCDC	12	12	0	6	0	0	12	0	0	10	0	0	0	0	129	21	0	2	0	0	12	0	0	7	0	108	0	0
China, Xinjiang	Prov. Lab/CCDC	27	27	0	27	0	0	38	1	0	20	0	0	0	0	396	308	0	114	0	0	133	0	0	137	0	88	0	35
China, Yunnan	Prov. Lab/CCDC	0	0	-	-	-	-	-	-	-	-	-	-	-	-	12	0	0	0	0	0	0	0	0	0	0	12	0	0
Malaysia	IMR	21	7	0	1	0	0	1	0	0	5	0	7	0	0	0	-	-	-	-	-	-	-	-	-	-	-	-	-
Total		191	174	0	80	0	0	130	2	0	120	0	10	0	0	1515	632	0	193	0	0	244	1	0	275	0	877	5	35

1. Based on year of collection of sample, if available. Otherwise, based on year of receipt at reference laboratory.

2. CCDC (Chinese Center for Disease Control and Prevention, China); IMR (Institute of Medical Research, Malaysia); VIDRL (Victorian Infectious Diseases Reference Laboratory, Australia)

Table 4. Vaccine-derived poliovirus identified from laboratory testing², 2000-2016

Country/area	2000–2009 ³	2010	2011	2012	2013	2014	2015	2016
Cambodia	2006 - 1 Total - 2							
China	2009 - 1 Total - 27	aVDPV2 (3 AFP + 1 contact + 1 non-AFP) aVDPV3 (1 AFP + 1 non-AFP)	aVDPV1 (1 AFP) aVDPV2 (2 AFP + 1 contact) cVDPV2 (2 AFP) iVDPV2 (1 AFP + 1 non-AFP) iVDPV3 (1 AFP)	aVDPV1 (1 AFP) aVDPV2 (2 AFP) cVDPV2 (2 AFP + 1 contact) iVDPV2 + iVDPV3 (1 AFP)	aVDPV2 (1 non-AFP) iVDPV2 + iVDPV3 (1 AFP)	aVDPV1 (1 non-AFP) aVDPV2 (2 AFP) iVDPV3 (1 AFP)	aVDPV1 (1 AFP) aVDPV2 (1 AFP) iVDPV2 (1 AFP)	
China, Hong Kong SAR	2005 - 3							
Japan	2005 - 1 Total - 2							
Lao People's Democratic Republic	2004 - 3						cVDPV1 (8 AFP + 21 contacts)	cVDPV1 (3 AFP + 4 contacts)
Mongolia	2003 - 1							
Philippines	2001 - 3					aVDPV2 (1 AFP)		
Viet Nam				aVDPV2 (2 AFP)				

1. Prefix letter refers to the VDPV category: "cVDPV" = circulating VDPV, "iVDPV" = immunodeficiency-associated VDPV, "aVDPV" = ambiguous VDPV, "?VDPV" = pending.

Suffix number refers to the poliovirus serotype (types 1, 2 or 3).

2. Source of specimens could be AFP cases, contacts, or non-AFP cases

3. Refers to year of last VDPV case, and aggregate total of VDPV cases for 2000-2009