

HIGHLIGHTS

Global Polio Eradication Initiative (GPEI) has a new website!

The Global Polio Eradication Initiative is a public-private partnership led by national governments in conjunction with five partners – the World Health Organization (WHO), Rotary International, the US Centers for Disease Control and Prevention (CDC), the United Nations Children’s Fund (UNICEF) and the Bill & Melinda Gates Foundation. Its goal is to eradicate polio worldwide.

Recently GPEI has revamped its website to allow easier access to the latest information in the world of polio eradication. The user friendly content is better organized with a fresher look into five main sections:

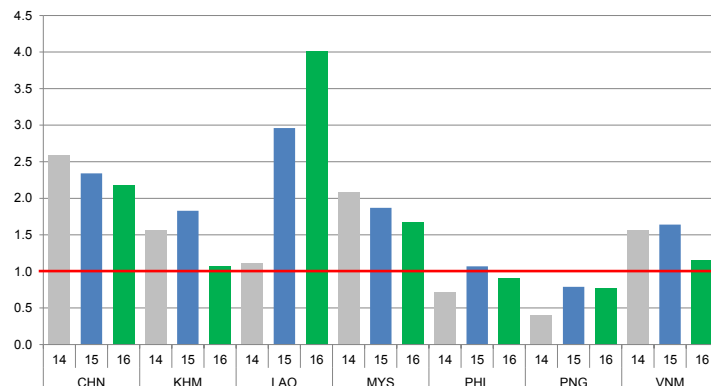
- **Who are we** section contains the mission statement, strategy, information about the key partners of the programme, and official reports released by the programme’s governing bodies.
- **Polio today** section includes the latest case counts, a history of polio in the world, current methods of prevention, and information on preparing for a polio-free world through transition planning and the implementation of the endgame strategy.
- **Where we work** section provides detailed information on the endemic, outbreak, at-risk, and polio-free countries. Anyone who is unsure of where a country falls among these categories can be directed to this section to quickly stay abreast of the latest news.
- **Financing** section contains information for donors and the GPEI’s funding-related updates.
- **News** section houses all media content, including web stories, monthly newsletters and high-quality multimedia content. All other resources – annual reports, policy developments, standard protocols and ongoing research – can be found under Tools & Library.

The website serves as a convenient resource on the progress toward a polio-free world, and can be accessed [here](http://www.gpei.org).

CONTACT US

Expanded Programme on Immunization
Regional Office for the Western Pacific
World Health Organization
P.O. Box 2932, 1000 Manila, Philippines
Phone: +63 2 5288001
Fax: +63 2 5211036, 5260279
Email: wproepidata@who.int
Web: www.wpro.who.int/immunization/en

Chart 1. Non-polio AFP rate (per 100 000 persons < 15 years of age), 2014–2016*



* AFP rate annualized as of week 42

Chart 2. Adequate specimen collection rate, 2014–2016

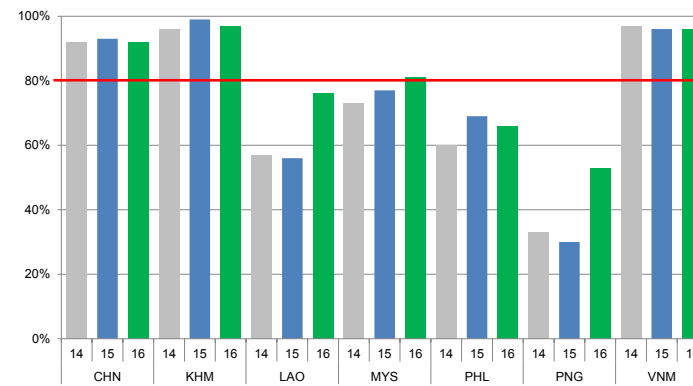


Chart 3. Percentage of reported AFP cases by number of polio vaccination doses, 2016

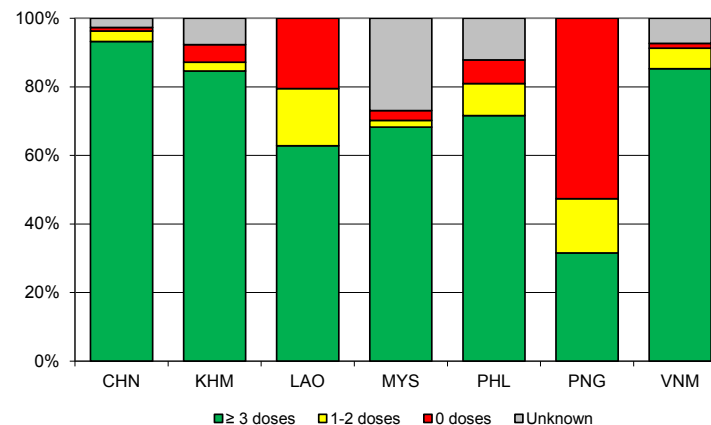
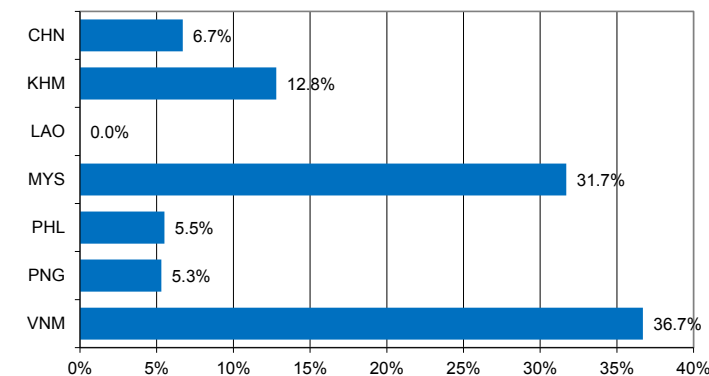


Chart 4. Percentage of reported AFP cases with pending classification > 90 days after onset, 2016



Note: Priority countries were selected for the charts. Official WHO acronyms have been used for abbreviation: CHN (China), KHM (Cambodia), LAO (Lao People’s Democratic Republic), MYS (Malaysia), PHL (Philippines), PNG (Papua New Guinea), and VNM (Viet Nam).

Table 1. Classification of AFP cases with onset in 2016 and key surveillance indicators

Country/area	2015	2016								Indicators			Latest report date	Days since last report ⁵
	Total reported cases	Annual expected cases <15 years of age	Total reported cases	Classification				Pending		Non-polio AFP rate ²	% with adequate specimens ³	% investigated ≤ 2 days of notification ⁴		
				Confirmed wild poliovirus	Vaccine-derived poliovirus (VDPV)	Polio-compatible	Discarded (Non-polio)	Total	> 90 days ¹ # (%)					
≤ 30														
Australia	53	45	48	0	0	1	37	10	3 (6.3%)	1.32	40%	92%	14-Oct-16	3
Brunei Darussalam	3	1	1	0	0	0	1	0	0 (0.0%)	1.24	100%	100%	08-Oct-16	9
Cambodia	84	45	39	0	0	0	24	15	5 (12.8%)	1.07	97%	92%	10-Oct-16	7
China	5217	2234	3928	0	0	0	2966	962	265 (6.7%)	2.18	92%	100%	12-Oct-16	5
China, Hong Kong SAR	10	8	8	0	0	0	8	0	0 (0.0%)	1.24	88%	100%	07-Oct-16	10
China, Macao SAR	1	1	1	0	0	0	1	0	0 (0.0%)	1.24	100%	100%	15-Sep-16	32
Japan	0	163	0	-	-	-	-	-	-	-	-	-	-	-
Lao People's Democratic Republic	71	24	78	0	3 ⁶	0	71	4	0 (0.0%)	4.02	76%	94%	13-Oct-16	4
Malaysia	144	77	104	0	0	0	60	44	33 (31.7%)	1.67	81%	63%	05-Oct-16	12
Mongolia	9	8	5	0	0	0	5	0	0 (0.0%)	0.77	60%	100%	07-Oct-16	10
New Zealand	7	9	10	0	0	0	8	2	2 (20.0%)	1.38	60%	90%	14-Sep-16	33
Papua New Guinea	27	30	19	0	0	0	13	6	1 (5.3%)	0.78	53%	89%	12-Oct-16	5
Philippines	413	394	289	0	0	0	232	57	16 (5.5%)	0.91	66%	95%	11-Oct-16	6
Republic of Korea	83	69	51	0	0	0	45	6	0 (0.0%)	0.92	94%	100%	22-Sep-16	25
Singapore	8	6	6	0	0	0	6	0	0 (0.0%)	1.24	100%	100%	07-Oct-16	10
Viet Nam	380	232	218	0	0	0	80	138	80 (36.7%)	1.16	96%	91%	07-Oct-16	10
Pacific island countries and areas	15	10	14	0	0	0	11	3	2 (14.3%)	1.73	71%	100%	11-Oct-16	6
Total	6525	3356	4819	0	3	1	3568	1247	407 (8.4%)	1.78	89%	98%		

1. Number (%) of reported cases pending classification more than 90 days from date of onset of paralysis to date of last report

2. Annualized non-polio AFP rate per 100 000 population under 15 years of age

3. Percentage of reported cases with two stool specimens collected 24 hours apart and within 14 days of onset of paralysis

4. Percentage of reported cases investigated within two days of notification

5. Countries are expected to submit data at least once per month to WPRO

6. Includes two cases that are 15 years old or older

Green
Yellow
Red

Reached or surpassed target

Nearly reached target: 0.5–0.99 for non-polio AFP rate; 60–79% for other indicators

Substantially below target

Table 2. Laboratory investigation of stool samples from AFP cases with onset in 2016 and key laboratory indicators

Country/area	Polio laboratory ¹	Total no. of AFP cases with specimens	Results of virus isolation for AFP cases										Intratyphic differentiation/ Sequencing laboratory ¹	No. of isolates received	Results of intratyphic differentiation (ITD)/sequencing for virus isolates												
			L20B positive	L20B positive + NPEV	NPEV only	Negative	Pending ≤ 14 days	Pending > 14 days	% results reported ≤ 14 days	% specimens positive for NPEV	Latest report date	Type 1			Type 2			Type 3			NPEV ²	Pending ITD	Discordant pending sequencing	% ITD results reported ≤ 7 days of receipt			
												Wild			Sabin	VDPV	Wild	Sabin	VDPV	Wild					Sabin	VDPV	
Australia	VIDRL	36	0	0	2	34	0	0	93%	3%	14-Oct-16	VIDRL	0	-	-	-	-	-	-	-	-	-	-	-	-	-	
Brunei Darussalam	VIDRL	1	0	0	0	1	0	0	100%	0%	14-Oct-16	VIDRL	0	-	-	-	-	-	-	-	-	-	-	-	-	-	
Cambodia	NIID	38	1	0	11	26	0	0	84%	26%	17-Oct-16	NIID	2	0	0	0	0	2	0	0	0	0	0	0	0	0	100%
China (total)		3860	39	1	329	3416	1	74	95%	7%	12-Oct-16		107	0	28	0	0	16	0	0	59	0	4	0	0	99%	
China, Anhui	Prov. Lab	189	1	0	8	179	0	1	100%	3%		Prov. Lab/CCDC	1	0	1	0	0	0	0	0	0	0	0	0	0	-	
China, Beijing	Prov. Lab	30	0	0	0	29	0	1	100%	0%		Prov. Lab/CCDC	0	-	-	-	-	-	-	-	-	-	-	-	-	-	
China, Chongqing	Prov. Lab	124	5	0	7	111	0	1	98%	5%		Prov. Lab/CCDC	0	-	-	-	-	-	-	-	-	-	-	-	-	-	
China, Fujian	Prov. Lab	84	3	0	3	77	0	1	96%	4%		Prov. Lab/CCDC	11	0	5	0	0	0	0	6	0	0	0	0	0	100%	
China, Gansu	Prov. Lab	292	4	1	18	268	0	1	86%	4%		Prov. Lab/CCDC	10	0	0	0	0	3	0	7	0	0	0	0	0	89%	
China, Guangdong	Prov. Lab	229	0	0	36	193	0	0	100%	13%		Prov. Lab/CCDC	7	0	1	0	0	1	0	5	0	0	0	0	0	100%	
China, Guangxi	Prov. Lab	238	4	0	40	189	0	5	98%	14%		Prov. Lab/CCDC	0	-	-	-	-	-	-	-	-	-	-	-	-	-	
China, Guizhou	Prov. Lab	71	0	0	3	65	0	3	99%	4%		Prov. Lab/CCDC	6	0	2	0	0	2	0	2	0	0	0	0	0	100%	
China, Hebei	Prov. Lab	289	2	0	39	236	0	12	84%	11%		Prov. Lab/CCDC	7	0	3	0	0	0	0	4	0	0	0	0	0	100%	
China, Heilongjiang	Prov. Lab	179	1	0	20	156	0	2	100%	10%		Prov. Lab/CCDC	0	-	-	-	-	-	-	-	-	-	-	-	-	-	
China, Henan	Prov. Lab	158	0	0	4	143	0	11	99%	3%		Prov. Lab/CCDC	13	0	5	0	0	0	0	4	0	4	0	0	0	100%	
China, Hubei	Prov. Lab	159	1	0	11	147	0	0	99%	6%		Prov. Lab/CCDC	0	0	0	0	0	0	0	0	0	0	0	0	0	-	
China, Hunan	Prov. Lab	51	0	0	4	43	0	4	100%	5%		Prov. Lab/CCDC	2	0	0	0	0	0	0	2	0	0	0	0	0	100%	
China, Jiangsu	Prov. Lab	71	0	0	2	64	0	5	94%	2%		Prov. Lab/CCDC	0	-	-	-	-	-	-	-	-	-	-	-	-	-	
China, Jiangxi	Prov. Lab	270	2	0	23	244	1	0	96%	6%		Prov. Lab/CCDC	2	0	1	0	0	0	0	1	0	0	0	0	0	100%	
China, Jilin	Prov. Lab	34	1	0	0	33	0	0	100%	0%		Prov. Lab/CCDC	0	-	-	-	-	-	-	-	-	-	-	-	-	-	
China, Neimongol	Prov. Lab	139	5	0	5	129	0	0	95%	3%		Prov. Lab/CCDC	7	0	3	0	0	0	0	4	0	0	0	0	0	100%	
China, Ningxia	Prov. Lab	279	3	0	34	241	0	1	95%	10%		Prov. Lab/CCDC	2	0	0	0	0	0	0	2	0	0	0	0	0	100%	
China, Shaanxi	Prov. Lab	31	1	0	0	30	0	0	100%	0%		Prov. Lab/CCDC	0	-	-	-	-	-	-	-	-	-	-	-	-	-	
China, Shandong	Prov. Lab	76	1	0	2	73	0	0	99%	3%		Prov. Lab/CCDC	5	0	0	0	0	2	0	3	0	0	0	0	0	100%	
China, Shanghai	Prov. Lab	185	0	0	16	166	0	3	93%	6%		Prov. Lab/CCDC	4	0	0	0	0	2	0	2	0	0	0	0	0	100%	
China, Shanxi	Prov. Lab	123	1	0	9	113	0	0	99%	5%		Prov. Lab/CCDC	11	0	4	0	0	0	0	7	0	0	0	0	0	100%	
China, Sichuan	Prov. Lab	60	0	0	8	50	0	2	93%	9%		Prov. Lab/CCDC	5	0	0	0	0	2	0	3	0	0	0	0	0	100%	
China, Tianjin	Prov. Lab	153	1	0	11	127	0	14	98%	8%		Prov. Lab/CCDC	2	0	2	0	0	0	0	0	0	0	0	0	0	100%	
China, Xinjiang	Prov. Lab	29	0	0	3	25	0	1	93%	9%		Prov. Lab/CCDC	4	0	0	0	0	2	0	2	0	0	0	0	0	100%	
China, Yunnan	Prov. Lab	136	0	0	17	118	0	1	97%	11%		Prov. Lab/CCDC	0	-	-	-	-	-	-	-	-	-	-	-	-	-	
China, Zhejiang	Prov. Lab	68	0	0	2	63	0	3	98%	2%		Prov. Lab/CCDC	3	0	0	0	0	2	0	1	0	0	0	0	0	100%	
China, Hainan	Prov. Lab	67	1	0	2	64	0	0	82%	2%		CCDC	0	-	-	-	-	-	-	-	-	-	-	-	-	-	
China, Liaoning	Prov. Lab	17	1	0	0	16	0	0	88%	0%		CCDC	2	0	0	0	0	0	0	2	0	0	0	0	0	-	
China, Qinghai	Prov. Lab	25	0	0	2	22	0	1	94%	6%		CCDC	1	0	1	0	0	0	0	0	0	0	0	0	0	100%	
China, Tibet	Prov. Lab	4	1	0	0	2	0	1	100%	0%		CCDC	2	0	0	0	0	0	0	2	0	0	0	0	0	100%	
China, Hong Kong SAR	PHLC	8	0	0	0	8	0	0	95%	0%	11-Oct-16	PHLC	0	-	-	-	-	-	-	-	-	-	-	-	-	-	
China, Macao SAR	PHLC	0	-	-	-	-	-	-	-	-	11-Oct-16	PHLC	0	-	-	-	-	-	-	-	-	-	-	-	-	-	
Japan	NIID	0	-	-	-	-	-	-	-	-	-	NIID	-	-	-	-	-	-	-	-	-	-	-	-	-	-	
Lao People's Democratic Republic	NIID	120	16	0	11	94	0	0	99%	8%	25-Aug-16	NIID	25	0	10	4	0	3	0	8	0	0	0	0	0	100%	
Malaysia	IMR	104	0	0	5	99	0	0	100%	5%	04-Oct-16	IMR	0	-	-	-	-	-	-	-	-	-	-	-	-	-	
Mongolia	PHI	5	0	0	0	5	0	0	90%	0%	17-Oct-16	NIID	0	-	-	-	-	-	-	-	-	-	-	-	-	-	
New Zealand	IESR	9	0	0	0	9	0	0	100%	0%	17-Oct-16	IESR	0	-	-	-	-	-	-	-	-	-	-	-	-	-	
Papua New Guinea	VIDRL	15	1	0	2	12	0	0	100%	15%	14-Oct-16	VIDRL	2	0	0	0	0	0	0	2	0	0	0	0	0	100%	
Philippines	RITM	348	4	0	34	310	17	0	97%	8%	11-Oct-16	RITM	8	0	2	0	0	3	0	3	0	0	0	0	0	100%	
Republic of Korea	NIH	50	0	0	7	42	1	0	97%	12%	22-Sep-16	NIH	0	-	-	-	-	-	-	-	-	-	-	-	-	-	
Singapore	SGH	6	0	0	0	6	0	0	100%	0%	14-Oct-16	SGH	0	-	-	-	-	-	-	-	-	-	-	-	-	-	
Viet Nam (North)	NIHE	148	4	0	16	128	0	0	98%	10%	10-Oct-16	NIHE	6	0	1	0	0	0	0	5	0	0	0	0	0	100%	
Viet Nam (South)	PI	98	2	0	13	80	3	0	94%	13%	11-Oct-16	PI	6	0	0	0	0	2	0	4	0	0	0	0	0	100%	
Pacific island countries and areas	VIDRL	12	0	0	4	8	0	0	96%	26%	14-Oct-16	VIDRL	0	-	-	-	-	-	-	-	-	-	-	-	-	-	
Total		4858	67	1	434	4278	22	74					156	0	41	4	0	26	0	0	81	0	4	0	0	99%	

1. CCDC (Chinese Center for Disease Control and Prevention, China); IESR (Institute of Environmental Science and Research, New Zealand); IMR (Institute of Medical Research, Malaysia); NIH (National Institute of Health, Republic of Korea); NIHE (National Institute of Hygiene and Epidemiology, Ha Noi, Viet Nam); NIID (National Institute of Infectious Diseases, Japan); PHI (Public Health Institute, Mongolia); PHLC (Public Health Laboratory Center, China, Hong Kong SAR); PI (Pasteur Institute, Ho Chi Minh, Viet Nam); RITM (Research Institute for Tropical Medicine, Philippines); SGH (Singapore General Hospital); VIDRL (Victorian Infectious Diseases Reference Laboratory, Australia)

2. NPEV growing in L20B cells

Table 3. Laboratory confirmation of polio isolates from environmental samples in 2014–2015 ¹

Country/area	Intratyptic differentiation lab ²	2014													2015														
		Total number of samples processed	Total number of samples with polio isolates	Polio isolates									NPEV	Pending ITD	Discordant pending sequencing	Total number of samples processed	Total number of samples with polio isolates	Polio isolates									NPEV	Pending ITD	Discordant pending sequencing
				Type 1			Type 2			Type 3								Type 1			Type 2			Type 3					
				Wild	Sabin	VDPV	Wild	Sabin	VDPV	Wild	Sabin	VDPV						Wild	Sabin	VDPV	Wild	Sabin	VDPV	Wild	Sabin	VDPV			
Australia	VIDRL	3	0	-	-	-	-	-	-	-	-	-	3	0	0	29	2	0	0	0	0	1	0	0	1	0	26	0	0
China (total) ³		167	167	0	79	0	0	129	2	0	115	0	0	0	0	1486	630	0	193	0	0	243	1	0	274	0	851	5	35
China, Fujian	Prov. Lab/CCDC	14	14	0	1	0	0	4	0	0	0	0	0	0	0	77	13	0	0	0	0	12	0	0	1	0	64	0	0
China, Gansu	Prov. Lab/CCDC	0	0	-	-	-	-	-	-	-	-	-	-	-	-	88	46	0	11	0	0	9	0	0	28	0	37	5	0
China, Guangdong	Prov. Lab/CCDC	48	48	0	21	0	0	22	0	0	15	0	0	0	0	171	43	0	11	0	0	24	1	0	7	0	128	0	0
China, Guangxi	Prov. Lab/CCDC	0	0	-	-	-	-	-	-	-	-	-	-	-	-	261	71	0	10	0	0	12	0	0	52	0	190	0	0
China, Heilongjiang	Prov. Lab/CCDC	18	18	0	11	0	0	37	1	0	47	0	0	0	0	47	20	0	2	0	0	16	0	0	2	0	27	0	0
China, Shandong	Prov. Lab/CCDC	48	48	0	13	0	0	16	0	0	23	0	0	0	0	305	108	0	43	0	0	25	0	0	40	0	197	0	0
China, Shanghai	Prov. Lab/CCDC	12	12	0	6	0	0	12	0	0	10	0	0	0	0	129	21	0	2	0	0	12	0	0	7	0	108	0	0
China, Xinjiang	Prov. Lab/CCDC	27	27	0	27	0	0	38	1	0	20	0	0	0	0	396	308	0	114	0	0	133	0	0	137	0	88	0	35
China, Yunnan	Prov. Lab/CCDC	0	0	-	-	-	-	-	-	-	-	-	-	-	-	12	0	0	0	0	0	0	0	0	0	0	12	0	0
Malaysia	IMR	21	7	0	1	0	0	1	0	0	5	0	7	0	0	0	-	-	-	-	-	-	-	-	-	-	-	-	-
Total		191	174	0	80	0	0	130	2	0	120	0	10	0	0	1515	632	0	193	0	0	244	1	0	275	0	877	5	35

1. Based on year of collection of sample, if available. Otherwise, based on year of receipt at reference laboratory.

2. CCDC (Chinese Center for Disease Control and Prevention, China); IMR (Institute of Medical Research, Malaysia); VIDRL (Victorian Infectious Diseases Reference Laboratory, Australia)

Table 4. Vaccine-derived poliovirus identified from laboratory testing², 2000-2016

Country/area	2000–2009 ³	2010	2011	2012	2013	2014	2015	2016
Cambodia	2006 - 1 Total - 2							
China	2009 - 1 Total - 27	aVDPV2 (3 AFP + 1 contact + 1 non-AFP) aVDPV3 (1 AFP + 1 non-AFP)	aVDPV1 (1 AFP) aVDPV2 (2 AFP + 1 contact) cVDPV2 (2 AFP) iVDPV2 (1 AFP + 1 non-AFP) iVDPV3 (1 AFP)	aVDPV1 (1 AFP) aVDPV2 (2 AFP) cVDPV2 (2 AFP + 1 contact) iVDPV2 + iVDPV3 (1 AFP)	aVDPV2 (1 non-AFP) iVDPV2 + iVDPV3 (1 AFP)	aVDPV1 (1 non-AFP) aVDPV2 (2 AFP) iVDPV3 (1 AFP)	aVDPV1 (1 AFP) aVDPV2 (1 AFP) iVDPV2 (1 AFP)	
China, Hong Kong SAR	2005 - 3							
Japan	2005 - 1 Total - 2							
Lao People's Democratic Republic	2004 - 3						cVDPV1 (8 AFP + 21 contacts)	cVDPV1 (3 AFP + 4 contacts)
Mongolia	2003 - 1							
Philippines	2001 - 3					aVDPV2 (1 AFP)		
Viet Nam				aVDPV2 (2 AFP)				

1. Prefix letter refers to the VDPV category: "cVDPV" = circulating VDPV, "iVDPV" = immunodeficiency-associated VDPV, "aVDPV" = ambiguous VDPV, "?VDPV" = pending.

Suffix number refers to the poliovirus serotype (types 1, 2 or 3).

2. Source of specimens could be AFP cases, contacts, or non-AFP cases

3. Refers to year of last VDPV case, and aggregate total of VDPV cases for 2000-2009