

Demographics

Total population (2015)	114 104
Births (2015)	3 340
Surviving infants (2015)	3 180
Urban population (2015)	44%

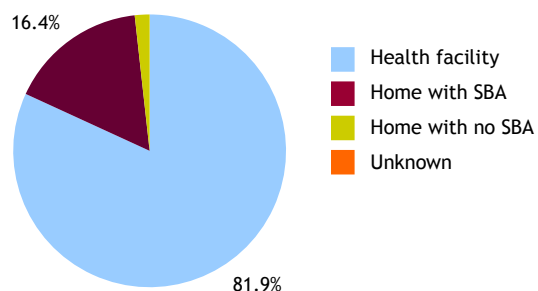
Hepatitis B vaccine

HepB3 introduced nationwide	1995
HepB birth dose introduced	1990
Current schedule	0, 6 weeks, 10 weeks, 14 weeks
HepB3 type	DTP-Hib-HepB

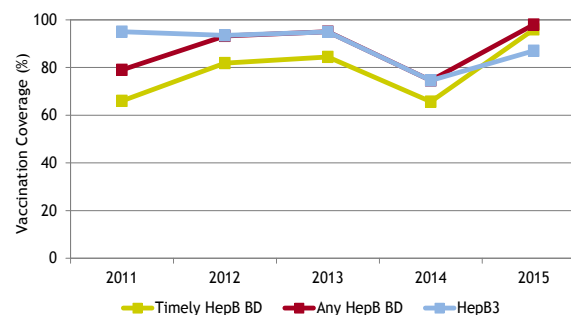
WHO verification

Status of verifying prevalence targets	
Verification started:	pending
Decision:	n.a.
Decision date:	n.a.

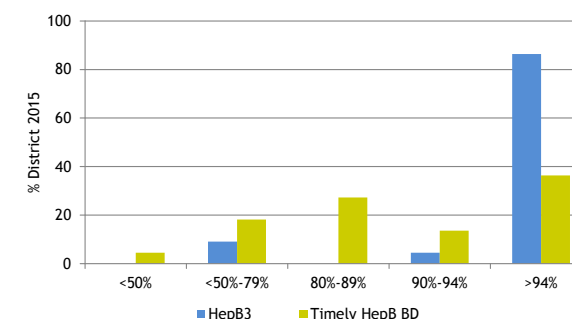
2012 Neonatal deliveries



Hepatitis B vaccination coverage



2015 Districts by coverage categories*



Vaccination coverage surveys

Survey year	Location	Ages enrolled	Sample size	HepB BD %	HepB3 %	DTP3 %	Reference/Notes
2009	National	48-59 months	181	not reported	not reported	32%	DHS Survey; by 12 months
2009	National	36-47 months	200	not reported	not reported	42%	DHS Survey; by 12 months
2009	National	24-35 months	202	not reported	not reported	50%	DHS Survey; by 12 months
2009	National	12-23 months	233	not reported	61%	61%	DHS Survey: HepB3 58%, DTP3 58% by 12 months

Hepatitis B serological surveys

Survey year	Location	Ages enrolled	Sampling base	Sample size	HBsAg prevalence (95%CI)	Reference/Notes
1998	Large Towns	12-24 months	Hospital based	156	3.8%	Wilson Vaccine 2000
2014	National	5-9 years	Community based	1249	3.3%	MoH Kiribati 2015

Abbreviations: DTP3: 3rd dose of Diphteria, Tetanus and Pertusis vaccine; HepB3: at least 3 doses of hepatitis B vaccine; HBsAg: hepatitis B surface antigen; SBA: Skilled Birth Attendant; Timely HepB BD: birth dose within 24 hours
Sources: Urban Population was derived from World Bank; 2012 Neonatal deliveries was derived from the Western Pacific Country Health Information Profiles; Unless otherwise noted in the section marked References/Notes, all remaining data was derived from the WHO and UNICEF Joint Reporting Form on Immunization
 *HepB3 vaccination coverage when available, otherwise graph represents DTP3 coverage.