

## HIGHLIGHTS

### Republic of Korea Takes Flight For Polio

In January 2017 the Government of Korea announced it was giving US \$4 million of those funds to UNICEF and WHO to support disease surveillance and a rapid outbreak response wherever it occurs. An innovative financing mechanism titled the "Global Disease Eradication Fund" air-ticket solidarity levy means the Government of Korea collects 1,000 South Korean Won (about US\$0.85) from each international passenger departing Korea's airports.

This unique new funding agreement was made possible through the committed work of Korean Rotary members, who used the global stage of their Rotary International Convention in



© UNICEF/UN026556/Parry

Seoul in May to highlight the opportunity for Korea to support polio eradication. UNICEF and WHO welcomed the funding, which will be used to detect and respond to any potential outbreak of polio. UNICEF received \$3 million, with WHO receiving \$1 million of the funds.

UNICEF Director of Polio Eradication Reza Hossaini said: "UNICEF is responsible for supply and demand in an outbreak response – the rapid supply of safe and effective vaccines, and generating the demand in the community to ensure they seek the vaccine and can quickly protect their children from the virus."

WHO's Director of Polio Eradication, Dr Zaffran said. "Korea's contribution is key to ensuring that we can find poliovirus anywhere it still survives through sensitive disease surveillance mechanisms."

Full story is available at:

<http://polioeradication.org/news-post/republic-of-korea-takes-flight-for-polio>

## CONTACT US

Expanded Programme on Immunization  
Regional Office for the Western Pacific  
World Health Organization  
P.O. Box 2932, 1000 Manila, Philippines  
Phone: +63 2 5288001  
Fax: +63 2 5211036, 5260279  
Email: [wproepidata@who.int](mailto:wproepidata@who.int)  
Web: [www.wpro.who.int/immunization/en](http://www.wpro.who.int/immunization/en)

Chart 1. Non-polio AFP rate (per 100 000 persons < 15 years of age), 2014–2016

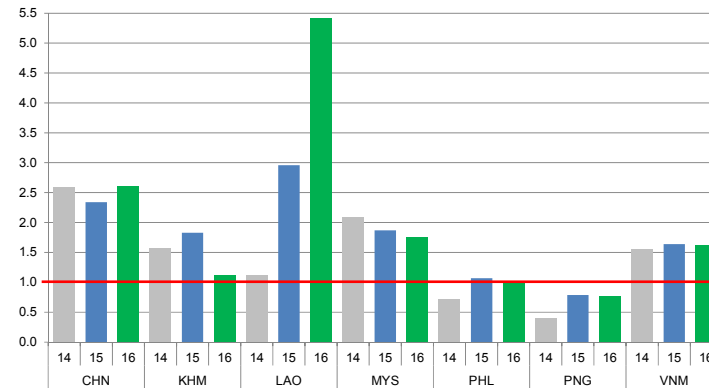


Chart 2. Adequate specimen collection rate, 2014–2016

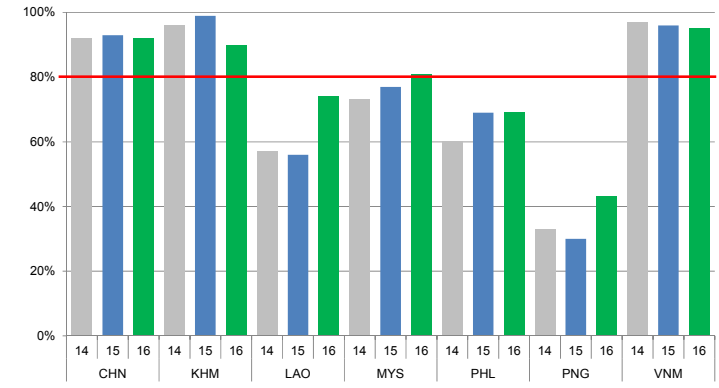


Chart 3. Percentage of reported AFP cases by number of polio vaccination doses, 2016

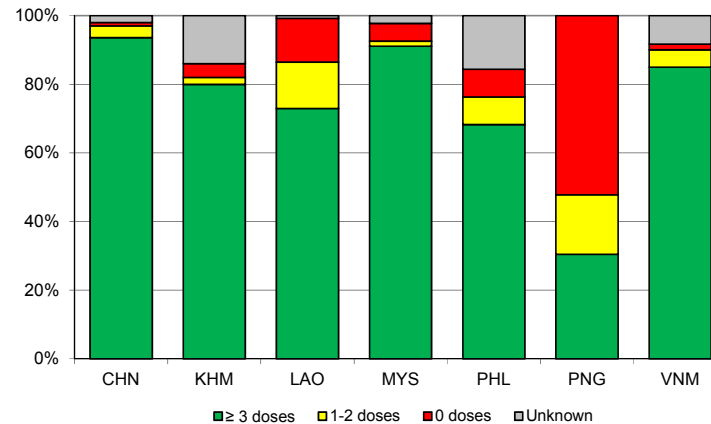
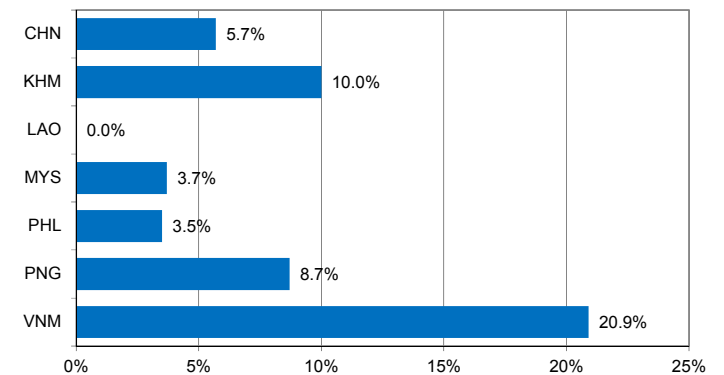


Chart 4. Percentage of reported AFP cases with pending classification > 90 days after onset, 2016



Note: Priority countries were selected for the charts. Official WHO acronyms have been used for abbreviation: CHN (China), KHM (Cambodia), LAO (Lao People's Democratic Republic), MYS (Malaysia), PHL (Philippines), PNG (Papua New Guinea), and VNM (Viet Nam).

Table 1. Classification of AFP cases with onset in 2016 and key surveillance indicators

Country/area	2015		2016											
	Total reported cases	Annual expected cases <15 years of age	Total reported cases	Classification						Indicators			Latest report date <sup>4</sup>	Days since last report <sup>5</sup>
				Confirmed wild poliovirus	Vaccine-derived poliovirus (VDPV)	Polio-compatible	Discarded (Non-polio)	Pending		Non-polio AFP rate	% with adequate specimens <sup>2</sup>	% investigated ≤ 2 days of notification <sup>3</sup>		
								Total	> 90 days <sup>1</sup> # (%)					
≥ 1	≥ 80%	≥ 80%	≤ 30											
Australia	53	45	65	0	0	1	52	12	9 (13.8%)	1.44	45%	95%	02-Feb-17	4
Brunei Darussalam	3	1	1	0	0	0	1	0	0 (0.0%)	1.00	100%	100%	08-Oct-16	-
Cambodia	84	45	50	0	0	0	44	6	5 (10.0%)	1.11	90%	92%	10-Jan-17	27
China	5217	2234	5828	0	0	0	4645	1183	330 (5.7%)	2.61	92%	100%	01-Feb-17	5
China, Hong Kong SAR	10	8	10	0	0	0	10	0	0 (0.0%)	1.25	90%	100%	09-Jan-17	-
China, Macao SAR	1	1	1	0	0	0	1	0	0 (0.0%)	1.00	100%	100%	12-Jan-17	-
Japan	0	163	0	-	-	-	-	-	-	-	-	-	-	-
Lao People's Democratic Republic	71	24	133	0	3 <sup>6</sup>	0	122	8	0 (0.0%)	5.42	74%	92%	23-Jan-17	14
Malaysia	144	77	135	0	0	0	127	8	5 (3.7%)	1.75	81%	81%	16-Jan-17	21
Mongolia	9	8	7	0	0	0	6	1	0 (0.0%)	0.88	71%	100%	06-Feb-17	0
New Zealand	7	9	12	0	0	0	10	2	1 (8.3%)	1.33	58%	83%	03-Feb-17	3
Papua New Guinea	27	30	23	0	0	0	13	10	2 (8.7%)	0.77	43%	91%	07-Nov-16	91
Philippines	413	394	397	0	0	0	368	29	14 (3.5%)	1.01	69%	95%	16-Jan-17	21
Republic of Korea	83	69	69	0	0	0	65	4	0 (0.0%)	1.00	94%	100%	18-Jan-17	19
Singapore	8	6	7	0	0	0	7	0	0 (0.0%)	1.17	100%	100%	06-Jan-17	-
Viet Nam	380	232	373	0	0	0	245	128	78 (20.9%)	1.61	95%	92%	25-Jan-17	12
Pacific island countries and areas	15	10	18	0	0	0	14	4	3 (16.7%)	1.80	72%	100%	17-Jan-17	20
<b>Total</b>	<b>6525</b>	<b>3356</b>	<b>7129</b>	<b>0</b>	<b>3</b>	<b>1</b>	<b>5730</b>	<b>1395</b>	<b>447 (6.3%)</b>	<b>2.12</b>	<b>90%</b>	<b>98%</b>		<b>-</b>

1. Number (%) of reported cases pending classification more than 90 days from date of onset of paralysis to date of last report

2. Percentage of reported cases with two stool specimens collected 24 hours apart and within 14 days of onset of paralysis

3. Percentage of reported cases investigated within two days of notification

4. Report date is fixed as soon as all cases for the year have been classified

5. Countries are expected to submit data at least once per month to WPRO

6. Includes two cases that are 15 years old or older

Green	Reached or surpassed target
Yellow	Nearly reached target: 0.5–0.99 for non-polio AFP rate; 60–79% for other indicators
Red	Substantially below target

Table 2. Laboratory investigation of stool samples from AFP cases with onset in 2016 and key laboratory indicators

Country/area	Polio laboratory	Total no. of AFP cases with specimens	Results of virus isolation for AFP cases									Intratyptic differentiation/ Sequencing laboratory <sup>1</sup>	No. of isolates received	Results of intratyptic differentiation (ITD)/sequencing for virus isolates														
			L20B positive	L20B positive + NPEV	NPEV only	Negative	Pending ≤ 14 days	Pending > 14 days	% results reported ≤ 14 days	% specimens positive for NPEV	Latest report date			Type 1			Type 2			Type 3			NPEV <sup>2</sup>	Pending ITD	Discordant pending sequencing	% ITD results reported ≤ 7 days of receipt		
														Wild	Sabin	VDPV	Wild	Sabin	VDPV	Wild	Sabin	VDPV						
Australia	VIDRL	47	0	0	3	44	0	0	94%	5%	27-Jan-17	VIDRL	0	-	-	-	-	-	-	-	-	-	-	-	-	-	-	-
Brunei Darussalam	VIDRL	1	0	0	0	1	0	0	100%	0%	27-Jan-17	VIDRL	0	-	-	-	-	-	-	-	-	-	-	-	-	-	-	-
Cambodia	NIID	51	2	0	11	38	0	0	88%	20%	30-Jan-17	NIID	3	0	0	0	0	2	0	0	1	0	0	0	0	0	0	100%
China (total)		5732	67	1	420	5156	1	87	96%	6%	01-Feb-17		163	0	43	0	0	16	0	0	97	1	6	0	0	0	99%	
China, Anhui	Prov. Lab	328	3	0	12	310	0	3	100%	3%		Prov. Lab/CCDC	5	0	1	0	0	0	0	0	4	0	0	0	0	0	100%	
China, Beijing	Prov. Lab	45	0	0	1	44	0	0	100%	2%		Prov. Lab/CCDC	0	-	-	-	-	-	-	-	-	-	-	-	-	-	-	
China, Chongqing	Prov. Lab	184	5	0	8	167	0	4	97%	4%		Prov. Lab/CCDC	3	0	0	0	0	0	0	3	0	0	0	0	0	100%		
China, Fujian	Prov. Lab	121	3	0	3	113	0	2	97%	3%		Prov. Lab/CCDC	11	0	5	0	0	0	0	6	0	0	0	0	0	100%		
China, Gansu	Prov. Lab	404	8	1	23	368	0	4	87%	4%		Prov. Lab/CCDC	10	0	0	0	3	0	0	7	0	0	0	0	0	89%		
China, Guangdong	Prov. Lab	319	3	0	44	267	1	4	100%	11%		Prov. Lab/CCDC	19	0	7	0	0	1	0	0	11	0	0	0	0	100%		
China, Guangxi	Prov. Lab	363	5	0	47	307	0	4	98%	11%		Prov. Lab/CCDC	6	0	2	0	0	0	0	4	0	0	0	0	0	100%		
China, Guizhou	Prov. Lab	118	1	0	3	109	0	5	99%	3%		Prov. Lab/CCDC	8	0	2	0	0	2	0	4	0	0	0	0	0	100%		
China, Hebei	Prov. Lab	466	7	0	52	402	0	5	87%	9%		Prov. Lab/CCDC	10	0	5	0	0	0	0	5	0	0	0	0	0	100%		
China, Heilongjiang	Prov. Lab	249	1	0	23	223	0	2	100%	8%		Prov. Lab/CCDC	1	0	0	0	0	0	0	1	0	0	0	0	0	100%		
China, Henan	Prov. Lab	239	0	0	4	229	0	6	99%	2%		Prov. Lab/CCDC	18	0	7	0	0	0	0	5	0	6	0	0	0	100%		
China, Hubei	Prov. Lab	224	1	0	12	210	0	1	99%	5%		Prov. Lab/CCDC	0	-	-	-	-	-	-	-	-	-	-	-	-	-		
China, Hunan	Prov. Lab	89	0	0	7	82	0	0	100%	6%		Prov. Lab/CCDC	2	0	0	0	0	0	0	2	0	0	0	0	0	100%		
China, Jiangsu	Prov. Lab	121	1	0	3	114	0	3	85%	2%		Prov. Lab/CCDC	0	-	-	-	-	-	-	-	-	-	-	-	-	-		
China, Jiangxi	Prov. Lab	409	7	0	31	358	0	13	95%	6%		Prov. Lab/CCDC	2	0	1	0	0	0	0	1	0	0	0	0	0	100%		
China, Jilin	Prov. Lab	41	1	0	0	40	0	0	100%	0%		Prov. Lab/CCDC	0	-	-	-	-	-	-	-	-	-	-	-	-	-		
China, Neimongol	Prov. Lab	167	5	0	6	154	0	2	97%	3%		Prov. Lab/CCDC	10	0	3	0	0	0	0	6	1	0	0	0	0	100%		
China, Ningxia	Prov. Lab	393	3	0	43	346	0	1	95%	9%		Prov. Lab/CCDC	2	0	0	0	0	0	0	2	0	0	0	0	0	100%		
China, Shaanxi	Prov. Lab	42	1	0	1	40	0	0	100%	2%		Prov. Lab/CCDC	2	0	0	0	0	0	0	2	0	0	0	0	0	100%		
China, Shandong	Prov. Lab	113	1	0	4	108	0	0	98%	4%		Prov. Lab/CCDC	12	0	1	0	0	2	0	0	9	0	0	0	0	100%		
China, Shanghai	Prov. Lab	263	0	0	18	242	0	3	94%	6%		Prov. Lab/CCDC	4	0	0	0	0	2	0	0	2	0	0	0	0	100%		
China, Shanxi	Prov. Lab	188	2	0	17	169	0	0	99%	7%		Prov. Lab/CCDC	13	0	4	0	0	0	0	9	0	0	0	0	0	100%		
China, Sichuan	Prov. Lab	96	1	0	8	86	0	1	97%	6%		Prov. Lab/CCDC	6	0	0	0	0	2	0	4	0	0	0	0	0	83%		
China, Tianjin	Prov. Lab	246	1	0	16	224	0	5	98%	6%		Prov. Lab/CCDC	2	0	2	0	0	0	0	0	0	0	0	0	0	100%		
China, Xinjiang	Prov. Lab	43	0	0	3	37	0	3	90%	6%		Prov. Lab/CCDC	4	0	0	0	0	2	0	2	0	0	0	0	0	100%		
China, Yunnan	Prov. Lab	202	0	0	22	174	0	6	97%	10%		Prov. Lab/CCDC	0	-	-	-	-	-	-	-	-	-	-	-	-	-		
China, Zhejiang	Prov. Lab	91	1	0	4	80	0	6	96%	4%		Prov. Lab/CCDC	5	0	0	0	0	2	0	0	3	0	0	0	0	100%		
China, Hainan	Prov. Lab	109	5	0	3	97	0	4	89%	2%		CCDC	1	0	1	0	0	0	0	0	0	0	0	0	0	100%		
China, Liaoning	Prov. Lab	24	0	0	0	24	0	0	96%	0%		CCDC	4	0	1	0	0	0	0	0	3	0	0	0	0	100%		
China, Qinghai	Prov. Lab	30	0	0	2	28	0	0	92%	5%		CCDC	1	0	1	0	0	0	0	0	0	0	0	0	0	100%		
China, Tibet	Prov. Lab	5	1	0	0	4	0	0	100%	0%		CCDC	2	0	0	0	0	0	0	2	0	0	0	0	0	100%		
China, Hong Kong SAR	PHLC	10	0	0	0	10	0	0	96%	0%	14-Dec-16	PHLC	0	-	-	-	-	-	-	-	-	-	-	-	-	-		
China, Macao SAR	PHLC	0	-	-	-	-	-	-	-	-	14-Dec-16	PHLC	0	-	-	-	-	-	-	-	-	-	-	-	-	-		
Japan	NIID	0	-	-	-	-	-	-	-	-	-	NIID	-	-	-	-	-	-	-	-	-	-	-	-	-	-		
Lao People's Democratic Republic	NIID	201	19	0	20	163	0	0	97%	8%	30-Jan-17	NIID	40	0	18	4	0	3	0	0	15	0	0	0	0	100%		
Malaysia	IMR	139	0	0	7	132	0	0	100%	5%	12-Jan-17	IMR	0	-	-	-	-	-	-	-	-	-	-	-	-	-		
Mongolia	PHI	7	0	0	1	6	0	0	93%	7%	29-Dec-16	NIID	0	-	-	-	-	-	-	-	-	-	-	-	-	-		
New Zealand	IESR	10	0	0	0	10	0	0	100%	0%	16-Jan-17	IESR	0	-	-	-	-	-	-	-	-	-	-	-	-	-		
Papua New Guinea	VIDRL	24	1	0	3	20	0	0	100%	12%	27-Jan-17	VIDRL	2	0	0	0	0	0	0	2	0	0	0	0	0	100%		
Philippines	RITM	460	5	0	42	409	4	0	97%	7%	02-Feb-17	RITM	14	0	4	0	0	3	0	0	7	0	0	0	0	100%		
Republic of Korea	NIH	67	0	0	7	60	0	0	95%	9%	18-Jan-17	NIH	0	-	-	-	-	-	-	-	-	-	-	-	-	-		
Singapore	SGH	7	0	0	0	7	0	0	100%	0%	02-Feb-17	SGH	0	-	-	-	-	-	-	-	-	-	-	-	-	-		
Viet Nam (North)	NIHE	208	6	0	26	176	0	0	99%	11%	06-Jan-17	NIHE	6	0	1	0	0	0	0	0	6	0	0	0	0	100%		
Viet Nam (South)	PI	167	5	0	16	146	0	0	96%	9%	24-Jan-17	PI	14	0	2	0	0	2	0	0	10	0	0	0	0	100%		
Pacific island countries and areas	VIDRL	16	0	0	5	11	0	0	97%	26%	27-Jan-17	VIDRL	0	-	-	-	-	-	-	-	-	-	-	-	-	-		
<b>Total</b>		<b>7147</b>	<b>105</b>	<b>1</b>	<b>561</b>	<b>6389</b>	<b>5</b>	<b>87</b>	<b>95%</b>	<b>6%</b>			<b>242</b>	<b>0</b>	<b>68</b>	<b>4</b>	<b>0</b>	<b>26</b>	<b>0</b>	<b>0</b>	<b>138</b>	<b>1</b>	<b>6</b>	<b>0</b>	<b>0</b>	<b>99%</b>		

1. CCDC (Chinese Center for Disease Control and Prevention, China); IESR (Institute of Environmental Science and Research, New Zealand); IMR (Institute of Medical Research, Malaysia); NIH (National Institute of Health, Republic of Korea); NIHE (National Institute of Hygiene and Epidemiology, Ha Noi, Viet Nam); NIID (National Institute of Infectious Diseases, Japan); PHI (Public Health Institute, Mongolia); PHLC (Public Health Laboratory Center, China, Hong Kong SAR); PI (Pasteur Institute, Ho Chi Minh, Viet Nam); RITM (Research Institute for Tropical Medicine, Philippines); SGH (Singapore General Hospital); VIDRL (Victorian Infectious Diseases Reference Laboratory, Australia)

2. NPEV growing in L20B cells

