

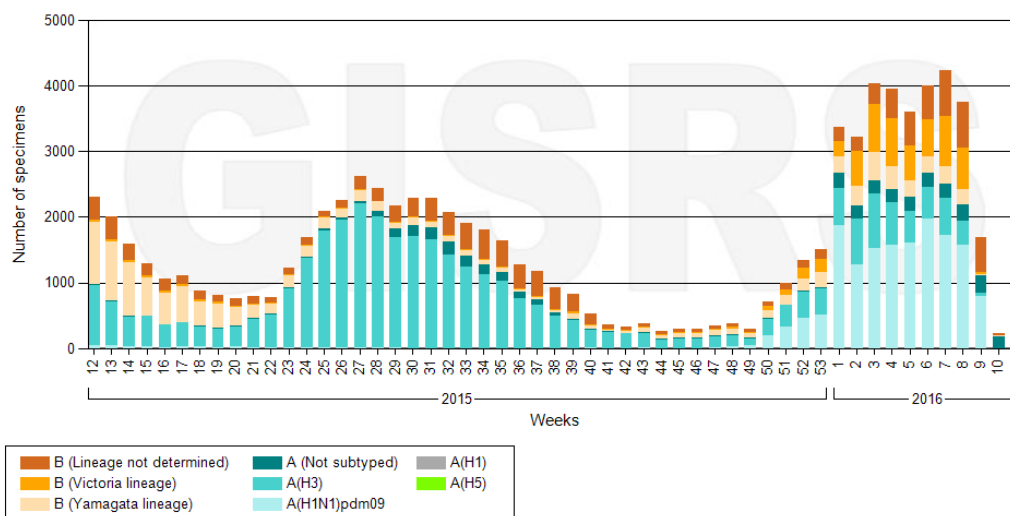
## Virological Surveillance Summary

In the Western Pacific Region, the following influenza viruses predominated:

**Table 1: Predominant influenza viruses, Western Pacific Region, 2015 to week 9 2016**

Year	Week	Predominant viruses
2015	1-9	A (H3)
	10-16	B (Yamagata lineage), B (lineage not determined)
	17-19	B (Yamagata lineage), A (H3)
	20-37	A (H3)
	38-42	A (H3), B (lineage not determined)
	43-51	Influenza virus activity is low in all subtypes
	52-53	A(H3), A(H1N1)pdm09
2016	1-9	A(H1N1)pdm09

**Figure 1: Number of specimens positive for influenza by subtype and week, Western Pacific Region, 2015-16 (accessed 16 March 2016)**



## Influenza surveillance summary

Influenza surveillance in the WHO Western Pacific Region is based on outpatient and inpatient sentinel surveillance systems. Case definitions, populations under surveillance and data formats differ among these countries. This influenza surveillance summary includes countries where routine surveillance is conducted and information is available from syndromic surveillance systems for Influenza-like-illness (ILI) and Severe Acute Respiratory Infections (SARI).

The [WHO surveillance case definition](#) for ILI is an acute respiratory infection with a measured fever of  $\geq 38^{\circ}\text{C}$  and cough, with symptom onset within the last 10 days. For SARI, it is an acute respiratory infection with a history of fever or measured fever of  $\geq 38^{\circ}\text{C}$  and cough, with symptom onset within the last 10 days and requires hospitalization.

## Countries in the temperate zone of the Northern Hemisphere

In most countries within the temperate zone of the Northern Hemisphere, ILI and influenza activity remained at low levels.

### Outpatient ILI Surveillance

#### China (North)

In week 9 2016, ILI activity had begun to decrease. The proportion of hospital visits that were for ILI at national sentinel hospitals in north China in week 9 was 3.6%, compared to 3.5% in week 8 of 2016, and 2.8% and 2.9% in the corresponding week of 2014 and 2015 respectively (Figure 2).

#### Mongolia

In week 9, 2016, ILI activity in Mongolia has been following seasonal patterns however has surpassed the upper tolerance limit (Figure 3).

#### Republic of Korea

In week 9, 2016, the rate of ILI patient visits to sentinel physicians (43.0/1,000 outpatients) followed the seasonal trend of previous years (2012-2015) and was above baseline (11.3/1,000 outpatients) (Figure 4).

#### China (North)

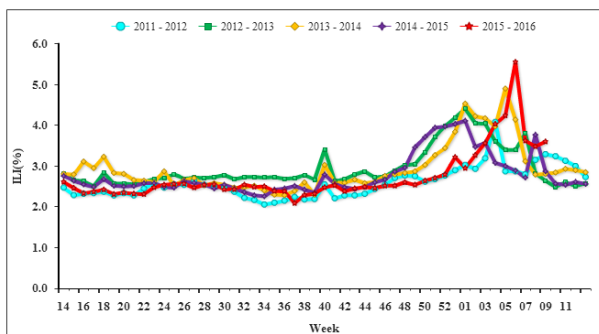


Figure 2: Percentage of visits for ILI at sentinel hospitals, 2011-2016 (Source: China National Influenza Center)

#### Mongolia

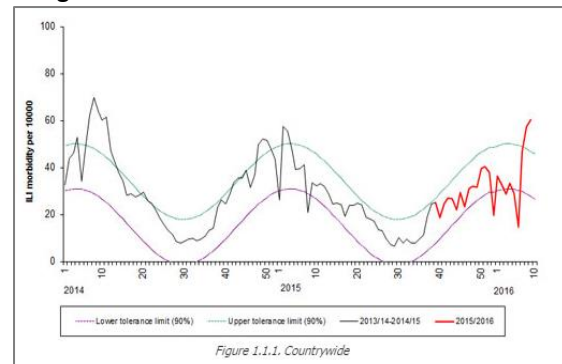


Figure 3: Proportion of outpatients that were ILI (per 10,000 people), 2013-2016 (Source: Mongolia National Influenza Center)

#### Republic of Korea

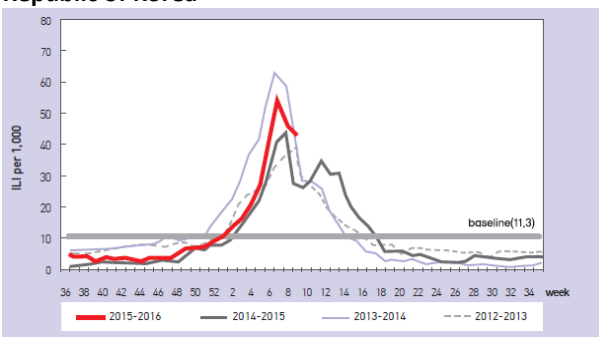


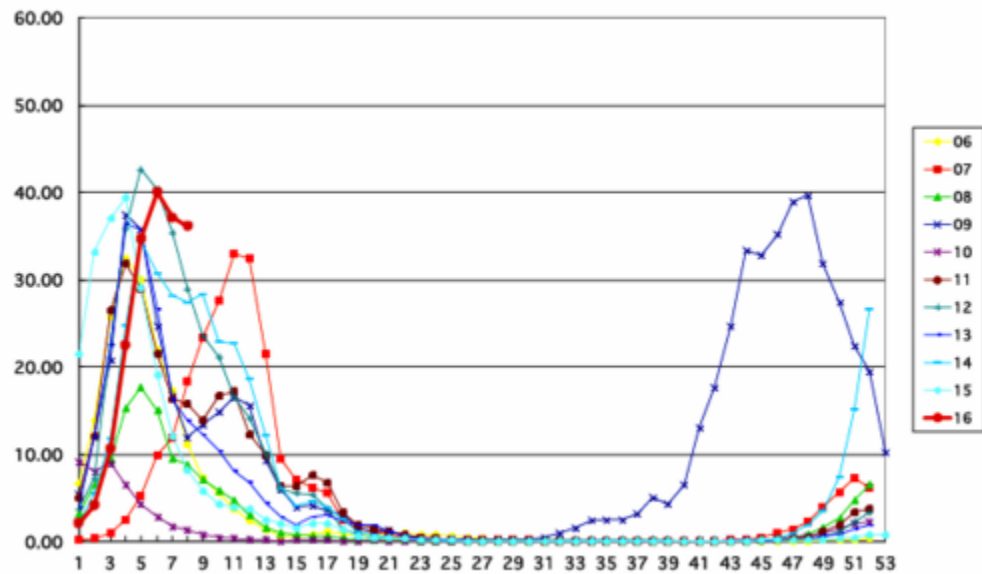
Figure 4: Weekly proportion of ILI visits per 1,000 patients 2012-2016 (Source: Korean Centre for Disease Control and Prevention)

## Sentinel influenza surveillance

### Japan

As of 9 March 2016, the number of influenza cases reported weekly per sentinel hospital site started decreasing, following the seasonal pattern. (Error! Reference source not found.).

Figure 1: Number of influenza cases reported weekly per sentinel hospital site, Japan 2006-2016 (Source: Japan National Institute of Infectious Diseases)



## Countries/areas in the tropical zone

In weeks 1 to 10 of 2016, ILI or Acute Respiratory Infection (ARI) activity followed previous seasonal trends in countries/areas in the tropical zone.

### Outpatient Surveillance

#### Hong Kong (China) - ILI Surveillance

During week 10, overall influenza activity remained at a high level. The average consultation rate for influenza-like illness (ILI) among sentinel general outpatient clinics was 11.7 ILI cases per 1,000 consultations, which was lower than 9.5 per 1,000 recorded in the previous week (Figure 6).

The average consultation rate for ILI among sentinel private doctors was 82.3 ILI cases per 1,000 consultations, which was higher than 67.7 per 1,000 recorded in the previous week (Figure 7).

The percentage of respiratory specimens in week 10 which tested positive for seasonal influenza viruses was 25.5%, slightly lower than that recorded in the previous week (26.5%). Of all respiratory specimens tested in week 10, 1303 (25.5%) tested positive for seasonal influenza viruses, including; 739 (14.5%) influenza A (H1N1), 43 (0.8%) influenza A (H3N2), 489 (9.6%) influenza B and 32 (0.6%) influenza C.

#### China (South) - ILI Surveillance

During week 9, the percentage of outpatient or emergency visits for ILI at national sentinel hospitals in south China was 3.4%, higher than last week (3.0%), as well as the corresponding weeks of 2014 and 2015 (2.9% and 2.7% respectively) (Figure 8). In South China, influenza B was the predominant type of influenza detected (54.3%). Of the influenza B subtypes, B Victoria was the most common (62.3%).

#### Singapore – ARI Surveillance

The average daily number of patients seeking treatment in the polyclinics for ARI decreased from 3,148 (over 5.5 working days) in week 8 to 3,001 (over 5.5 working days) in week 9 (Figure 9). The proportion of patients with influenza-like illness (ILI) among the polyclinic attendances for ARI remained low at approximately 1%. The overall prevalence of influenza among ILI samples (n=249) in the community was 66.7% in the past 4 weeks. Of specimens that tested positive for influenza in February 2016, 61.1% were positive for influenza B, 22.7% for influenza A (H1N1) pdm09, and 16.2% for influenza A (H3N2).

#### Hong Kong (China) - ILI Surveillance

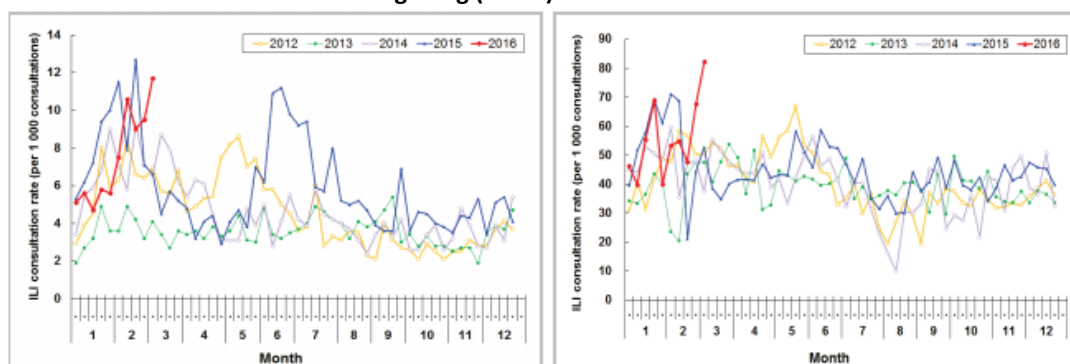


Figure 6: ILI consultation rates at sentinel general outpatient clinics, Hong Kong 2012-2016 (Source: Hong Kong Centre for Health Protection)

Figure 7: ILI consultation rates at sentinel private doctors, Hong Kong 2012-2016 (Source: Hong Kong Centre for Health Protection)

### China (South) - ILI Surveillance

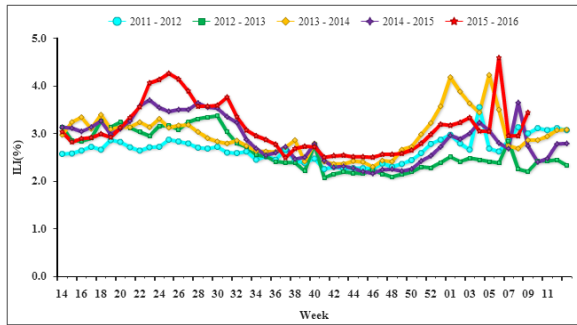


Figure 8: Percentage of visits due to ILI at national sentinel hospitals in South China, 2011-2016 (Source: China National Influenza Center)

### Singapore - ARI Surveillance

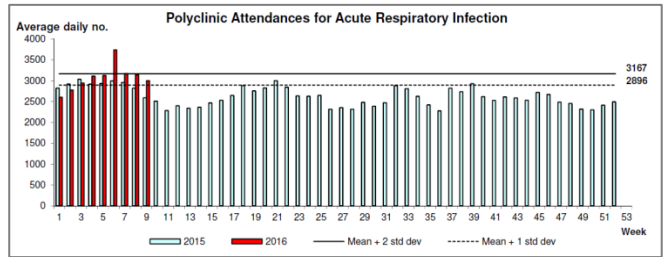


Figure 9: Average daily polyclinic attendances for Acute Respiratory Infection, Singapore 2015-2016 (Source: Singapore Ministry of Health)

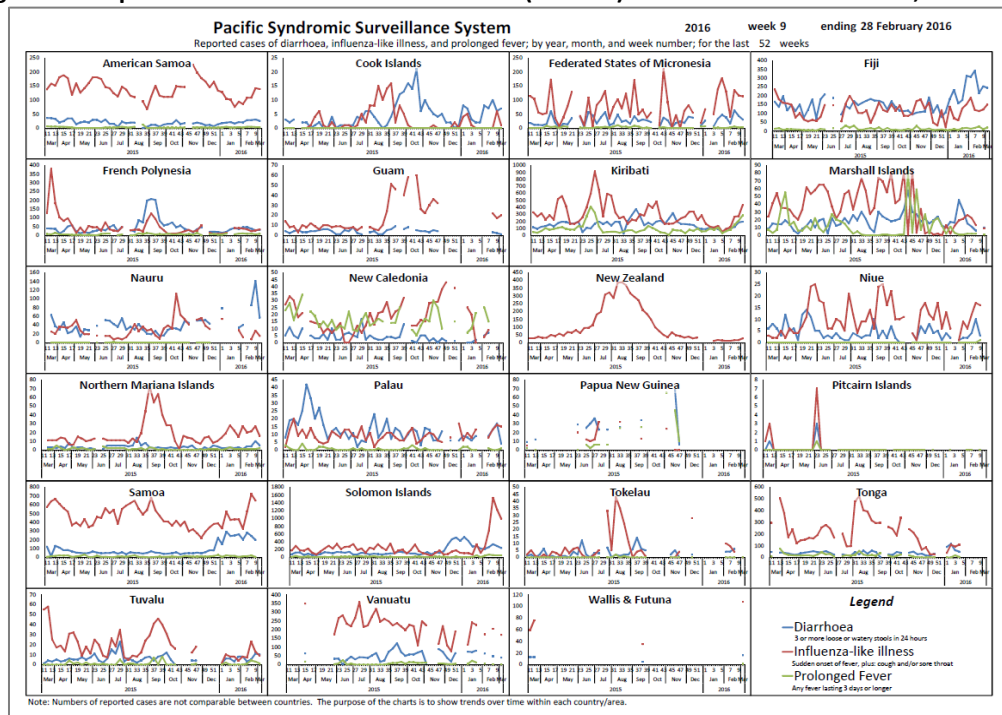
## Countries in the temperate zone of the southern hemisphere

Influenza surveillance data from Australia and New Zealand is reported during their influenza season and will not be updated in this report unless unusual activity is apparent.

### Pacific Island Countries and Areas (PICs)- ILI Surveillance

In the Pacific Island Countries and Areas, as of week 9, the number of ILI cases reported is higher than the previous weeks in Fiji, Guam, Kiribati and New Caledonia. (Figure 10)

Figure 10: Reported cases of influenza-like illness (red line) in Pacific Island Countries, 2015–2016



## Global influenza situation updates

---

Epidemiological update:

[http://www.who.int/influenza/surveillance\\_monitoring/updates/2016\\_03\\_07\\_surveillance\\_update\\_258.pdf?ua=1](http://www.who.int/influenza/surveillance_monitoring/updates/2016_03_07_surveillance_update_258.pdf?ua=1)

Virological update:

[http://www.who.int/influenza/qisrs\\_laboratory/updates/summaryreport/en/](http://www.who.int/influenza/qisrs_laboratory/updates/summaryreport/en/)

Global update:

[http://www.who.int/influenza/surveillance\\_monitoring/updates/latest\\_update\\_GIP\\_surveillance/](http://www.who.int/influenza/surveillance_monitoring/updates/latest_update_GIP_surveillance/)

Others:

Recommended composition of influenza virus vaccines for use in the 2016 southern hemisphere influenza season

[http://www.who.int/influenza/vaccines/virus/recommendations/2016\\_south/en/](http://www.who.int/influenza/vaccines/virus/recommendations/2016_south/en/)

Antigenic and genetic characteristics of zoonotic influenza viruses and candidate vaccine viruses developed for potential use in human vaccines

[http://www.who.int/influenza/vaccines/virus/characteristics\\_virus\\_vaccines/en/](http://www.who.int/influenza/vaccines/virus/characteristics_virus_vaccines/en/)

4th WHO Informal Consultation on Improving Influenza Vaccine Virus Selection

[http://www.who.int/influenza/qisrs\\_laboratory/updates/summaryreport](http://www.who.int/influenza/qisrs_laboratory/updates/summaryreport)

Video on influenza on WHO's YouTube Channel

Arabic: <https://www.youtube.com/watch?v=PxW6Pq1AnwI>

Chinese: <https://www.youtube.com/watch?v=xW9gDKEPitQ>

English: <https://www.youtube.com/watch?v=yhhJfT86Bgg>

French: <https://www.youtube.com/watch?v=8mo8rWWJZkc>

Russian: <https://www.youtube.com/watch?v=XQO6nbkKUWQ>

Spanish: <https://www.youtube.com/watch?v=qXr75cKxwTY>