

HIGHLIGHTS

The GAP III Containment Certification Scheme (CCS) Auditor training

The GAP III CCS Auditor training was held in Republic of Korea from 14-18 January 2019. The objectives were to:

1. understand the CCS process and mechanism, requirements for certification, and the auditor roles and responsibilities.
2. discuss the need for effective communication during the audit, and
3. understand the audit preparation, conduct opening and closing meeting, on-site auditing activities, preparation of audit findings and conclusions and reporting of audit results and follow-up.

Two trainers, three international participants and 17 local participants attended the training. The meeting discussed the GAP III CCS and 16 elements of the GAP III post eradication containment requirements applicable to polio essential facilities. The expected outcome from the meeting included clarifications on containment certification issues related to polio vaccine production and other poliovirus essential facilities, acceptable interim bio risk management measures and build an audit team capacity. A written auditor examination at the end of the course was taken for participants' assessment. A minimum pass rate of 75% must be attained to receive a certificate of achievement.



CONTACT US

Expanded Programme on Immunization
Regional Office for the Western Pacific
World Health Organization
P.O. Box 2932, 1000 Manila, Philippines
Phone: +63 2 5288001
Fax: +63 2 5211036, 5260279
Email: wproepidata@who.int
Web: www.wpro.who.int/immunization

Chart 1. Non-polio AFP rate (per 100 000 persons < 15 years of age), 2016–2018

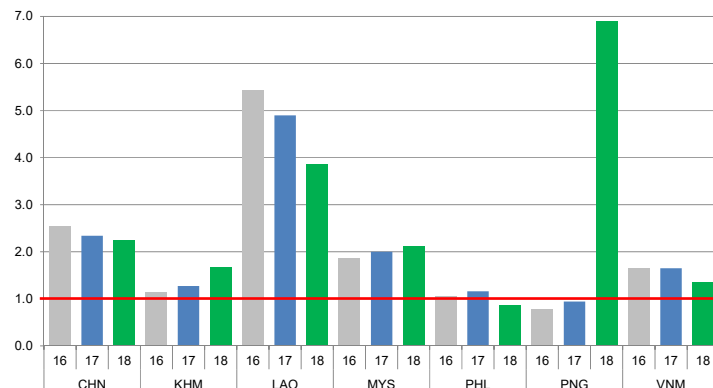


Chart 2. Adequate specimen collection rate, 2016–2018

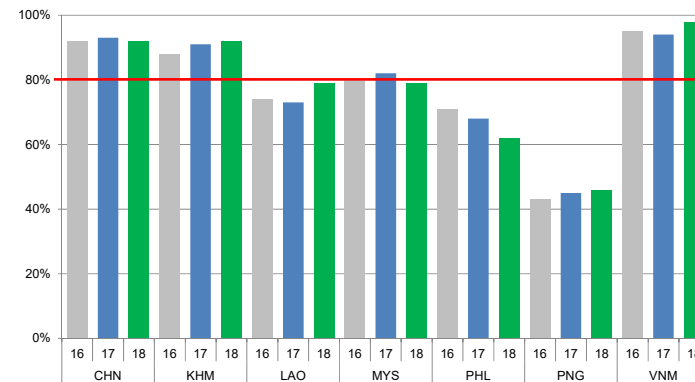


Chart 3. Percentage of reported AFP cases by number of polio vaccination doses, 2018

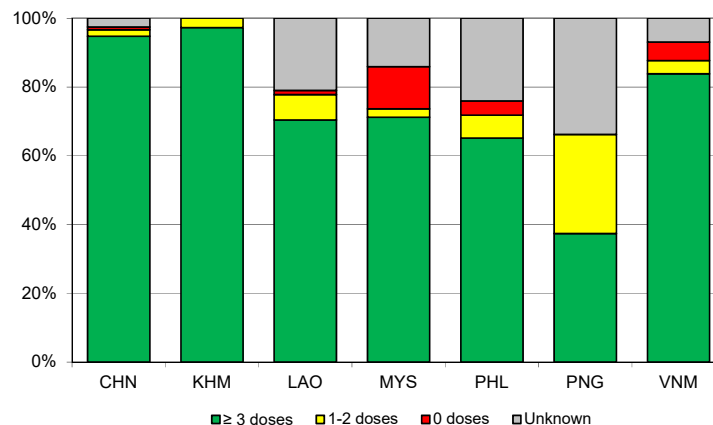
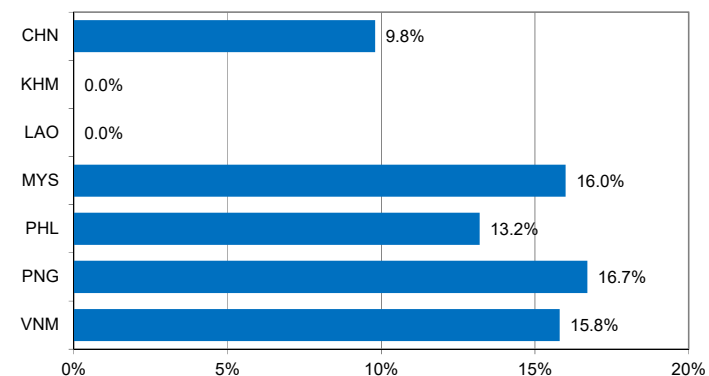


Chart 4. Percentage of reported AFP cases with pending classification > 90 days after onset, 2018



Note: Priority countries were selected for the charts. Official WHO acronyms have been used for abbreviation: CHN (China), KHM (Cambodia), LAO (Lao People's Democratic Republic), MYS (Malaysia), PHL (Philippines), PNG (Papua New Guinea), and VNM (Viet Nam).

Table 1. Classification of AFP cases with onset in 2018 and key surveillance indicators

Country/area	2017		2018							Indicators			Latest report date ⁴	Days since last report ⁵
	Total reported cases	Annual expected cases <15 years of age	Total reported cases	Classification				Pending		Non-polio AFP rate	% with adequate specimens ²	% investigated ≤ 2 days of notification ³		
				Confirmed wild poliovirus	Vaccine-derived poliovirus (VDPV)	Polio-compatible	Discarded (Non-polio)	Total	> 90 days ¹ # (%)					
														≤ 30
Australia	60	46	54	0	0	2	47	5	1 (1.9%)	1.17	46%	89%	16-Jan-19	6
Brunei Darussalam	1	1	2	0	0	0	2	0	0 (0.0%)	2.00	100%	100%	13-Oct-18	101
Cambodia	57	44	73	0	0	0	72	1	0 (0.0%)	1.66	92%	85%	03-Jan-19	19
China	5278	2256	5084	0	1	0	3575	1508	496 (9.8%)	2.25	92%	100%	09-Jan-19	13
China, Hong Kong SAR	15	9	11	0	0	0	10	1	0 (0.0%)	1.22	82%	100%	21-Jan-19	1
China, Macao SAR	2	1	3	0	0	0	2	1	0 (0.0%)	3.00	100%	100%	11-Jan-19	11
Japan	-	161	-	-	-	-	-	-	-	-	-	-	-	-
Lao People's Democratic Republic	103	21	81	0	0	0	74	7	0 (0.0%)	3.86	79%	78%	14-Dec-18	39
Malaysia	154	77	163	0	0	0	110	53	26 (16.0%)	2.12	79%	75%	04-Dec-18	49
Mongolia	6	9	6	0	0	0	5	1	0 (0.0%)	0.67	100%	83%	09-Jan-19	13
New Zealand	13	9	9	0	0	0	6	3	0 (0.0%)	1.00	56%	100%	31-Oct-18	83
Papua New Guinea	29	37	281	0	26	12	144	99	47 (16.7%)	6.89	46%	75%	22-Jan-19	0
Philippines	462	338	287	0	0	0	237	50	38 (13.2%)	0.85	62%	94%	27-Dec-18	26
Republic of Korea	68	67	68	0	0	0	61	7	0 (0.0%)	1.01	90%	100%	11-Jan-19	11
Singapore	7	6	13	0	0	0	11	2	0 (0.0%)	2.17	77%	100%	08-Jan-19	14
Viet Nam	385	234	316	0	0	0	235	81	50 (15.8%)	1.35	98%	86%	11-Jan-19	11
Pacific island countries and areas	16	11	10	0	0	0	1	9	4 (40.0%)	0.91	30%	100%	17-Dec-18	36
Total	6656	3327	6461	0	27	14	4592	1828	662 (10.2%)	1.93	88%	97%		

1. Number (%) of reported cases pending classification more than 90 days from date of onset of paralysis to date of last report
2. Percentage of reported cases with two stool specimens collected 24 hours apart and within 14 days of onset of paralysis
3. Percentage of reported cases investigated within two days of notification
4. Report date is fixed as soon as all cases for the year have been classified
5. Countries are expected to submit data at least once per month to WPRO

	Reached or surpass target
	Nearly reached target 0.5-0.99 for non-polio AFP rate; 60-79% for other indicators
	Substantially below target

Table 3. Laboratory confirmation of polio isolates from environmental samples in 2017–2018 ¹

Country/area	Intratyptic differentiation lab ²	2017													2018															
		Total number of samples processed	Total number of samples with polio isolates	Polio isolates									NPEV	Pending ITD	Discordant pending sequencing	Total number of samples processed	Total number of samples with polio isolates	Polio isolates									NPEV	Pending ITD	Discordant pending sequencing	
				Type 1			Type 2			Type 3								Type 1			Type 2			Type 3						
				Wild	Sabin	VDPV	Wild	Sabin	VDPV	Wild	Sabin	VDPV						Wild	Sabin	VDPV	Wild	Sabin	VDPV	Wild	Sabin	VDPV				
Australia	VIDRL	6	2	0	0	0	0	0	1	0	1	0	4	0	0	17	2	0	2	0	0	0	0	0	0	0	0	12	0	0
China (total)		325	188	0	213	0	0	0	0	0	650	0	1158	0	0	240	154	0	179	0	0	0	1	0	480	2	1161	0	0	
China, Fujian	Prov. Lab/CCDC	53	22	0	8	0	0	0	0	0	42	0	331	0	0	67	46	0	16	0	0	0	0	0	97	1	532	0	0	
China, Gansu	Prov. Lab/CCDC	12	10	0	10	0	0	0	0	0	29	0	18	0	0	9	6	0	2	0	0	0	0	0	8	0	33	0	0	
China, Guangdong	Prov. Lab/CCDC	48	39	0	18	0	0	0	0	0	87	0	108	0	0	48	41	0	27	0	0	0	0	0	102	1	217	0	0	
China, Guangxi	Prov. Lab/CCDC	36	20	0	22	0	0	0	0	0	36	0	94	0	0	0	-	-	-	-	-	-	-	-	-	-	-	-	-	
China, Heilongjiang	Prov. Lab/CCDC	42	17	0	12	0	0	0	0	0	34	0	112	0	0	40	21	0	6	0	0	0	0	0	41	0	105	0	0	
China, Shandong	Prov. Lab/CCDC	48	28	0	18	0	0	0	0	0	90	0	272	0	0	27	8	0	13	0	0	0	0	0	36	0	149	0	0	
China, Shanghai	Prov. Lab/CCDC	22	18	0	17	0	0	0	0	0	65	0	51	0	0	8	5	0	3	0	0	0	0	0	7	0	31	0	0	
China, Xinjiang	Prov. Lab/CCDC	36	34	0	108	0	0	0	0	0	267	0	115	0	0	27	27	0	112	0	0	0	1	0	189	0	79	0	0	
China, Yunnan	Prov. Lab/CCDC	28	0	-	-	-	-	-	-	-	-	-	57	0	0	14	0	-	-	-	-	-	-	-	-	-	15	0	0	
Malaysia	IMR	24	0	-	-	-	-	-	-	-	-	-	22	0	0	0	-	-	-	-	-	-	-	-	-	-	-	-	-	
Philippines	RITM	40	8	0	1	0	0	0	0	0	7	0	21	0	0	87	8	0	2	0	0	0	0	0	2	0	24	4	0	
Papua New Guinea	RITM	-	-	-	-	-	-	-	-	-	-	-	-	-	-	27	23	0	16	7	0	0	0	0	21	0	9	0	0	
Total		395	198	0	214	0	0	0	1	0	658	0	1205	0	0	371	187	0	199	7	0	0	1	0	503	2	1206	4	0	

1. Based on year of collection of sample, if available. Otherwise, based on year of receipt at reference laboratory.

2. CCDC (Chinese Center for Disease Control and Prevention, China); IMR (Institute of Medical Research, Malaysia); RITM (Research Institute for Tropical Medicine, Philippines); VIDRL (Victorian Infectious Diseases Reference Laboratory, Australia)

Table 4. Vaccine-derived poliovirus¹ identified from laboratory testing², 2000–2018

Country/area	2000–2009 ³	2010	2011	2012	2013	2014	2015	2016	2017	2018
Australia									aVDPV2 (1 env)	
Cambodia	2006 - 1 Total - 2									
China	2009 - 1 Total - 27	aVDPV2 (3 AFP + 1 contact + 1 non-AFP) aVDPV3 (1 AFP + 1 non-AFP)	aVDPV1 (1 AFP) aVDPV2 (2 AFP + 1 contact) cVDPV2 (2 AFP) iVDPV2 (1 AFP + 1 non-AFP) iMDPV3 (1 AFP)	aVDPV1 (1 AFP) aVDPV2 (2 AFP) cVDPV2 (2 AFP + 1 contact) iVDPV2 + iMDPV3 (1 AFP)	aVDPV2 (1 non-AFP) iVDPV2 + iVDPV3 (1 AFP)	aVDPV1 (1 non-AFP) aVDPV2 (2 AFP) iVDPV3 (1 AFP)	aVDPV1 (1 AFP) aVDPV2 (1 AFP) iVDPV2 (1 AFP) aVDPV2 (1 env)	aVDPV3 (1 AFP)	aVDPV3 (1 AFP) iVDPV3 (1 AFP) ⁴	aVDPV2 (1 env) iVDPV3 (1 AFP + 1 non-AFP) aVDPV3 (2 env)
China, Hong Kong SAR	2005 - 3									
Japan	2005 - 1 Total - 2									
Lao People's Democratic Republic	2004 - 3						cVDPV1 (8 AFP + 21 contacts)	cVDPV1 (3 AFP + 4 contacts)		
Mongolia	2003 - 1									
Papua New Guinea										cVDPV1 (26 AFP + 8 contacts + 7 env)
Philippines	2001 - 3					aVDPV2 (1 AFP)				
Viet Nam				aVDPV2 (2 AFP)						

1. Prefix letter refers to the VDPV category: "cVDPV" = circulating VDPV, "iVDPV" = immunodeficiency-associated VDPV, "aVDPV" = ambiguous VDPV, "vVDPV" = pending. Suffix number refers to the poliovirus serotype (types 1, 2 or 3).

2. Source of specimens could be AFP cases, contacts, non-AFP cases or environmental

3. Refers to year of last VDPV case, and aggregate total of VDPV cases for 2000-2009

4. Continuous excretion for 4 months; potential immunodeficient person.