

HIGHLIGHTS

"Zero polio transmission and health for all", WHO Director-General visit to Afghanistan and Pakistan

On 5-8 January 2018, the WHO Director-General Dr Tedros Adhanom Ghebreyesus visited Afghanistan and Pakistan. Dr Tedros highlighted WHO's commitment to the final push to eradicate polio. He also met with heads of state and senior government officials in both countries and witnessed first-hand WHO-supported health programmes. "We must all give our best on this last mile to eradicate polio once and for all. My wish for 2019 is for zero polio transmission. You have WHO's full support to help reach every child and stop this virus for good", Dr Tedros said.

Prior to this visit, WHO Director-General Dr Tedros Adhanom Ghebreyesus took over the Chair of the Polio Oversight Board, which guides and oversees the Global Polio Eradication Initiative – spearheaded by national governments, WHO, Rotary International, UNICEF, CDC and the Bill & Melinda Gates Foundation - as a clear sign that the eradication of this disease is a priority for WHO.

Full story is available at:

[https://www.who.int/news-room/detail/08-01-2019-\"zero-polio-transmission-and-health-for-all\"-who-director-general-gives-new-year's-wish-to-the-people-of-afghanistan-and-pakistan](https://www.who.int/news-room/detail/08-01-2019-\)



CONTACT US

Expanded Programme on Immunization
Regional Office for the Western Pacific
World Health Organization
P.O. Box 2932, 1000 Manila, Philippines
Phone: +63 2 5288001
Fax: +63 2 5211036, 5260279
Email: wproepidata@who.int
Web: www.wpro.who.int/immunization

Chart 1. Non-polio AFP rate (per 100 000 persons < 15 years of age), 2016–2018

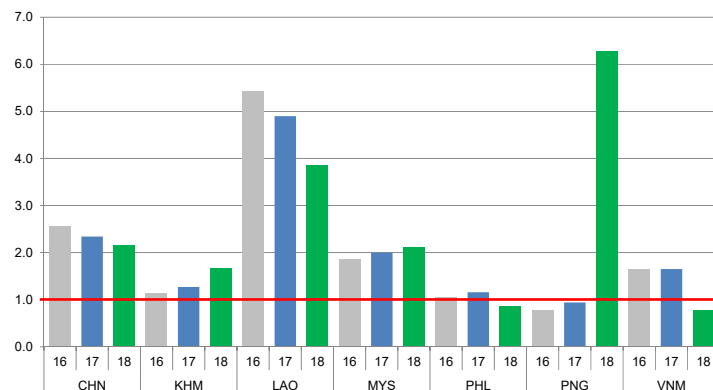


Chart 2. Adequate specimen collection rate, 2016–2018

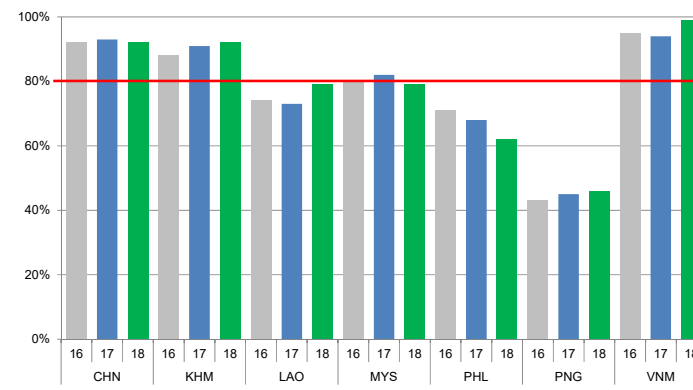


Chart 3. Percentage of reported AFP cases by number of polio vaccination doses, 2018

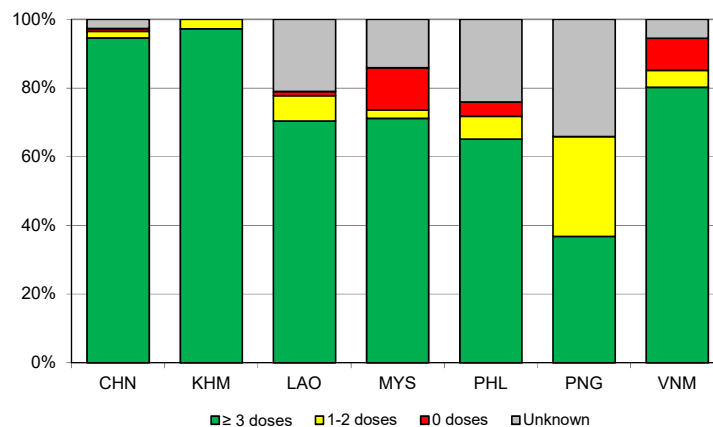
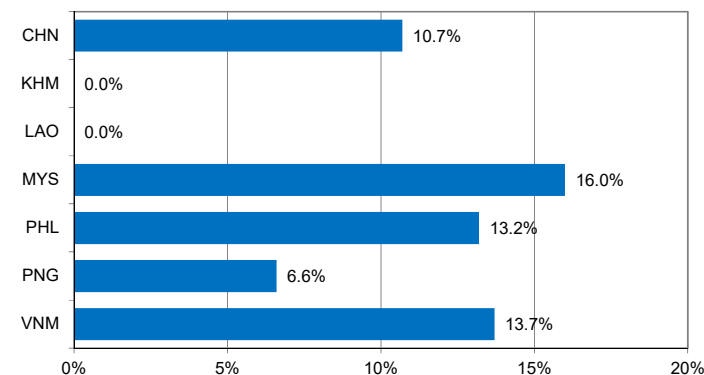


Chart 4. Percentage of reported AFP cases with pending classification > 90 days after onset, 2018



Note: Priority countries were selected for the charts. Official WHO acronyms have been used for abbreviation: CHN (China), KHM (Cambodia), LAO (Lao People's Democratic Republic), MYS (Malaysia), PHL (Philippines), PNG (Papua New Guinea), and VNM (Viet Nam).

Table 1. Classification of AFP cases with onset in 2018 and key surveillance indicators

Country/area	2017		2018											
	Total reported cases	Annual expected cases <15 years of age	Total reported cases	Classification						Indicators			Latest report date ⁴	Days since last report ⁵
				Confirmed wild poliovirus	Vaccine-derived poliovirus (VDPV)	Polio-compatible	Discarded (Non-polio)	Pending		Non-polio AFP rate	% with adequate specimens ²	% investigated ≤ 2 days of notification ³		
								Total	> 90 days ¹ # (%)					≥ 1
Australia	60	46	53	0	0	2	47	4	1 (1.9%)	1.15	47%	89%	03-Jan-19	6
Brunei Darussalam	1	1	2	0	0	0	2	0	0 (0.0%)	2.00	100%	100%	13-Oct-18	88
Cambodia	57	44	73	0	0	0	72	1	0 (0.0%)	1.66	92%	85%	03-Jan-19	6
China	5278	2256	4863	0	1	0	3186	1676	519 (10.7%)	2.16	92%	100%	26-Dec-18	14
China, Hong Kong SAR	15	9	10	0	0	0	10	0	0 (0.0%)	1.11	90%	100%	02-Jan-19	-
China, Macao SAR	2	1	3	0	0	0	2	1	0 (0.0%)	3.00	100%	100%	14-Dec-18	26
Japan	-	161	-	-	-	-	-	-	-	-	-	-	-	-
Lao People's Democratic Republic	103	21	81	0	0	0	74	7	0 (0.0%)	3.86	79%	78%	14-Dec-18	26
Malaysia	154	77	163	0	0	0	110	53	26 (16.0%)	2.12	79%	75%	04-Dec-18	36
Mongolia	6	9	5	0	0	0	5	0	0 (0.0%)	0.56	100%	80%	12-Dec-18	28
New Zealand	13	9	9	0	0	0	6	3	0 (0.0%)	1.00	56%	100%	31-Oct-18	70
Papua New Guinea	29	37	258	0	26	12	144	76	17 (6.6%)	6.27	46%	76%	20-Dec-18	20
Philippines	462	338	287	0	0	0	237	50	38 (13.2%)	0.85	62%	94%	27-Dec-18	13
Republic of Korea	68	67	65	0	0	0	50	15	0 (0.0%)	0.97	89%	100%	10-Dec-18	30
Singapore	7	6	13	0	0	0	11	2	0 (0.0%)	2.17	77%	100%	08-Jan-19	1
Viet Nam	385	234	182	0	0	0	115	67	25 (13.7%)	0.78	99%	89%	21-Oct-18	80
Pacific island countries and areas	16	11	10	0	0	0	1	9	4 (40.0%)	0.91	30%	100%	17-Dec-18	23
Total	6656	3327	6077	0	27	14	4072	1964	630 (10.4%)	1.82	88%	97%		

1. Number (%) of reported cases pending classification more than 90 days from date of onset of paralysis to date of last report
2. Percentage of reported cases with two stool specimens collected 24 hours apart and within 14 days of onset of paralysis
3. Percentage of reported cases investigated within two days of notification
4. Report date is fixed as soon as all cases for the year have been classified
5. Countries are expected to submit data at least once per month to WPRO

	Reached or surpass target
	Nearly reached target 0.5-0.99 for non-polio AFP rate; 60-79% for other indicators
	Substantially below target

Table 2. Laboratory investigation of stool samples from AFP cases with onset in 2018 and key laboratory indicators

Country/area	Polio laboratory	Total no. of AFP cases with specimens	Results of virus isolation for AFP cases									Intratyphic differentiation/ Sequencing laboratory ¹	No. of isolates received	Results of intratyphic differentiation (ITD)/sequencing for virus isolates															
			L20B positive	L20B positive + NPEV	NPEV only	Negative	Pending ≤ 14 days	Pending > 14 days	% results reported ≤ 14 days	% specimens positive for NPEV	Latest report date			Type 1			Type 2			Type 3			NPEV ²	Pending ITD	Discordant pending sequencing	% ITD results reported ≤ 7 days of receipt ≥ 80%			
														Wild	Sabin	VDPV	Wild	Sabin	VDPV	Wild	Sabin	VDPV							
Australia	VIDRL	43	0	0	1	42	0	0	91%	3%	03-Jan-19	VIDRL	0	-	-	-	-	-	-	-	-	-	-	-	-	-	-	-	-
Brunei Darussalam	VIDRL	2	0	0	0	2	0	0	50%	0%	10-Sep-18	VIDRL	0	-	-	-	-	-	-	-	-	-	-	-	-	-	-	-	-
Cambodia	NIID	73	0	0	13	60	0	0	93%	15%	30-Dec-18	NIID	0	-	-	-	-	-	-	-	-	-	-	-	-	-	-	-	-
China (total)		4801	34	0	349	4335	0	0	83	98%	6%	26-Dec-18		97	0	24	0	0	0	0	0	63	10	0	0	0	0	0	99%
China, Anhui	Prov. Lab	298	3	0	14	276	0	0	5	100%	4%	Prov. Lab/CCDC	8	0	3	0	0	0	0	0	5	0	0	0	0	0	0	0	100%
China, Beijing	Prov. Lab	32	0	0	0	31	0	0	1	100%	0%	Prov. Lab/CCDC	0	-	-	-	-	-	-	-	-	-	-	-	-	-	-	-	-
China, Chongqing	Prov. Lab	55	0	0	3	52	0	0	0	89%	5%	Prov. Lab/CCDC	0	-	-	-	-	-	-	-	-	-	-	-	-	-	-	-	-
China, Fujian	Prov. Lab	169	1	0	13	155	0	0	0	98%	7%	Prov. Lab/CCDC	1	0	0	0	0	0	0	0	1	0	0	0	0	0	0	0	100%
China, Gansu	Prov. Lab	104	1	0	5	93	0	0	5	99%	5%	Prov. Lab/CCDC	2	0	0	0	0	0	0	0	2	0	0	0	0	0	0	0	100%
China, Guangdong	Prov. Lab	398	1	0	20	374	0	0	3	92%	4%	Prov. Lab/CCDC	4	0	0	0	0	0	0	0	4	0	0	0	0	0	0	0	100%
China, Guangxi	Prov. Lab	188	2	0	16	169	0	0	1	98%	8%	Prov. Lab/CCDC	4	0	3	0	0	0	0	0	1	0	0	0	0	0	0	0	100%
China, Guizhou	Prov. Lab	185	1	0	13	169	0	0	2	97%	6%	Prov. Lab/CCDC	2	0	2	0	0	0	0	0	0	0	0	0	0	0	0	0	100%
China, Hebei	Prov. Lab	272	0	0	36	235	0	0	1	100%	10%	Prov. Lab/CCDC	2	0	0	0	0	0	0	0	2	0	0	0	0	0	0	0	100%
China, Heilongjiang	Prov. Lab	80	0	0	4	75	0	0	1	100%	5%	Prov. Lab/CCDC	0	-	-	-	-	-	-	-	-	-	-	-	-	-	-	-	-
China, Henan	Prov. Lab	503	5	0	52	445	0	0	1	100%	9%	Prov. Lab/CCDC	13	0	5	0	0	0	0	0	8	0	0	0	0	0	0	0	100%
China, Hubei	Prov. Lab	149	1	0	11	135	0	0	2	99%	7%	Prov. Lab/CCDC	4	0	2	0	0	0	0	0	2	0	0	0	0	0	0	0	100%
China, Hunan	Prov. Lab	217	0	0	24	192	0	0	1	99%	9%	Prov. Lab/CCDC	0	-	-	-	-	-	-	-	-	-	-	-	-	-	-	-	-
China, Jiangsu	Prov. Lab	217	8	0	11	192	0	0	6	100%	5%	Prov. Lab/CCDC	25	0	2	0	0	0	0	0	13	10	0	0	0	0	0	0	100%
China, Jiangxi	Prov. Lab	152	1	0	11	134	0	0	6	98%	5%	Prov. Lab/CCDC	3	0	2	0	0	0	0	0	1	0	0	0	0	0	0	0	100%
China, Jilin	Prov. Lab	56	2	0	9	44	0	0	1	100%	12%	Prov. Lab/CCDC	8	0	4	0	0	0	0	0	4	0	0	0	0	0	0	0	100%
China, Neimongol	Prov. Lab	93	2	0	4	87	0	0	0	98%	4%	Prov. Lab/CCDC	4	0	1	0	0	0	0	0	3	0	0	0	0	0	0	0	100%
China, Ningxia	Prov. Lab	22	0	0	2	20	0	0	0	95%	7%	Prov. Lab/CCDC	0	-	-	-	-	-	-	-	-	-	-	-	-	-	-	-	-
China, Shaanxi	Prov. Lab	91	0	0	2	82	0	0	7	86%	2%	Prov. Lab/CCDC	1	0	0	0	0	0	0	0	1	0	0	0	0	0	0	0	0%
China, Shandong	Prov. Lab	379	2	0	26	351	0	0	0	100%	5%	Prov. Lab/CCDC	3	0	0	0	0	0	0	0	3	0	0	0	0	0	0	0	100%
China, Shanghai	Prov. Lab	39	0	0	0	39	0	0	0	100%	0%	Prov. Lab/CCDC	0	-	-	-	-	-	-	-	-	-	-	-	-	-	-	-	-
China, Shanxi	Prov. Lab	124	1	0	6	116	0	0	1	98%	4%	Prov. Lab/CCDC	2	0	0	0	0	0	0	0	2	0	0	0	0	0	0	0	100%
China, Sichuan	Prov. Lab	280	0	0	13	249	0	0	18	96%	4%	Prov. Lab/CCDC	1	0	0	0	0	0	0	0	1	0	0	0	0	0	0	0	100%
China, Tianjin	Prov. Lab	20	0	0	0	20	0	0	0	100%	0%	Prov. Lab/CCDC	0	-	-	-	-	-	-	-	-	-	-	-	-	-	-	-	-
China, Xinjiang	Prov. Lab	125	1	0	7	116	0	0	1	90%	5%	Prov. Lab/CCDC	2	0	0	0	0	0	0	0	2	0	0	0	0	0	0	0	100%
China, Yunnan	Prov. Lab	242	0	0	32	198	0	0	12	95%	11%	Prov. Lab/CCDC	1	0	0	0	0	0	0	0	1	0	0	0	0	0	0	0	100%
China, Zhejiang	Prov. Lab	171	2	0	7	160	0	0	2	99%	4%	Prov. Lab/CCDC	7	0	0	0	0	0	0	0	7	0	0	0	0	0	0	0	100%
China, Hainan	Prov. Lab	31	0	0	6	25	0	0	0	100%	16%	CCDC	0	-	-	-	-	-	-	-	-	-	-	-	-	-	-	-	-
China, Liaoning	Prov. Lab	72	0	0	1	65	0	0	6	98%	1%	CCDC	0	-	-	-	-	-	-	-	-	-	-	-	-	-	-	-	-
China, Qinghai	Prov. Lab	30	0	0	0	30	0	0	0	100%	0%	CCDC	0	-	-	-	-	-	-	-	-	-	-	-	-	-	-	-	-
China, Tibet	Prov. Lab	7	0	0	1	6	0	0	0	85%	8%	CCDC	0	-	-	-	-	-	-	-	-	-	-	-	-	-	-	-	-
China, Hong Kong SAR	PHLC	10	0	0	0	10	0	0	0	100%	0%	03-Jan-19	PHLC	0	-	-	-	-	-	-	-	-	-	-	-	-	-	-	-
China, Macao SAR	PHLC	3	0	0	0	3	0	0	0	100%	0%	24-Dec-18	PHLC	0	-	-	-	-	-	-	-	-	-	-	-	-	-	-	-
Japan	NIID	-	-	-	-	-	-	-	-	-	-	NIID	-	-	-	-	-	-	-	-	-	-	-	-	-	-	-	-	-
Lao People's Democratic Republic	NIID	101	1	0	8	92	0	0	0	98%	5%	30-Dec-18	NIID	1	0	0	0	0	0	0	0	1	0	0	0	0	0	0	100%
Malaysia	IMR	148	0	0	8	138	0	0	2	94%	4%	09-Nov-18	IMR	0	-	-	-	-	-	-	-	-	-	-	-	-	-	-	-
Mongolia	PHI	6	0	0	3	3	0	0	0	100%	50%	04-Jan-19	NIID	0	-	-	-	-	-	-	-	-	-	-	-	-	-	-	-
New Zealand	IESR	7	0	0	1	6	0	0	0	100%	14%	01-Jan-19	IESR	0	-	-	-	-	-	-	-	-	-	-	-	-	-	-	-
Papua New Guinea	VIDRL	252	82	1	13	150	0	0	6	87%	4%	18-Dec-18	VIDRL	175	0	57	46	0	0	0	0	72	0	0	0	0	0	0	100%
Philippines	RITM	373	5	1	13	352	2	0	0	96%	3%	03-Jan-19	RITM	7	0	2	0	0	0	0	0	4	0	0	1	0	0	100%	
Republic of Korea	NIH	64	0	0	5	56	3	0	0	98%	7%	10-Dec-18	NIH	0	-	-	-	-	-	-	-	-	-	-	-	-	-	-	-
Singapore	SGH	12	0	0	2	9	1	0	0	95%	10%	08-Jan-19	SGH	0	-	-	-	-	-	-	-	-	-	-	-	-	-	-	-
Viet Nam (North)	NIHE	172	3	0	24	144	1	0	0	100%	12%	14-Dec-18	NIHE	4	0	2	0	0	0	0	0	2	0	0	0	0	0	0	100%
Viet Nam (South)	PI	170	4	0	20	136	10	0	0	100%	13%	02-Jan-19	PI	8	0	2	0	0	0	0	0	6	0	0	0	0	0	0	100%
Pacific island countries and areas	VIDRL	1	0	0	0	1	0	0	0	100%	0%	02-May-18	VIDRL	0	-	-	-	-	-	-	-	-	-	-	-	-	-	-	-
Total		6238	129	2	460	5539	17	91	97%	6%			292	0	87	46	0	0	0	0	148	10	0	1	0	0	100%		

1. CCDC (Chinese Center for Disease Control and Prevention, China); IESR (Institute of Environmental Science and Research, New Zealand); IMR (Institute of Medical Research, Malaysia); NIH (National Institute of Health, Republic of Korea); NIHE (National Institute of Hygiene and Epidemiology, Ha Noi, Viet Nam); NIID (National Institute of Infectious Diseases, Japan); PHI (Public Health Institute, Mongolia); PHLC (Public Health Laboratory Center, China, Hong Kong SAR); PI (Pasteur Institute, Ho Chi Minh, Viet Nam); RITM (Research Institute for Tropical Medicine, Philippines); SGH (Singapore General Hospital); VIDRL (Victorian Infectious Diseases Reference Laboratory, Australia)

2. NPEV growing in L20B cells

Table 3. Laboratory confirmation of polio isolates from environmental samples in 2017–2018 ¹

Country/area	Intratyptic differentiation lab ²	2017													2018															
		Total number of samples processed	Total number of samples with polio isolates	Polio isolates									NPEV	Pending ITD	Discordant pending sequencing	Total number of samples processed	Total number of samples with polio isolates	Polio isolates									NPEV	Pending ITD	Discordant pending sequencing	
				Type 1			Type 2			Type 3								Type 1			Type 2			Type 3						
				Wild	Sabin	VDPV	Wild	Sabin	VDPV	Wild	Sabin	VDPV						Wild	Sabin	VDPV	Wild	Sabin	VDPV	Wild	Sabin	VDPV				
Australia	VIDRL	6	2	0	0	0	0	0	1	0	1	0	4	0	0	17	2	0	2	0	0	0	0	0	0	0	0	12	0	0
China (total)		325	188	0	213	0	0	0	0	0	650	0	1158	0	0	240	154	0	179	0	0	0	1	0	480	2	1161	0	0	
China, Fujian	Prov. Lab/CCDC	53	22	0	8	0	0	0	0	0	42	0	331	0	0	67	46	0	16	0	0	0	0	0	97	1	532	0	0	
China, Gansu	Prov. Lab/CCDC	12	10	0	10	0	0	0	0	0	29	0	18	0	0	9	6	0	2	0	0	0	0	0	8	0	33	0	0	
China, Guangdong	Prov. Lab/CCDC	48	39	0	18	0	0	0	0	0	87	0	108	0	0	48	41	0	27	0	0	0	0	0	102	1	217	0	0	
China, Guangxi	Prov. Lab/CCDC	36	20	0	22	0	0	0	0	0	36	0	94	0	0	0	-	-	-	-	-	-	-	-	-	-	-	-	-	
China, Heilongjiang	Prov. Lab/CCDC	42	17	0	12	0	0	0	0	0	34	0	112	0	0	40	21	0	6	0	0	0	0	0	41	0	105	0	0	
China, Shandong	Prov. Lab/CCDC	48	28	0	18	0	0	0	0	0	90	0	272	0	0	27	8	0	13	0	0	0	0	0	36	0	149	0	0	
China, Shanghai	Prov. Lab/CCDC	22	18	0	17	0	0	0	0	0	65	0	51	0	0	8	5	0	3	0	0	0	0	0	7	0	31	0	0	
China, Xinjiang	Prov. Lab/CCDC	36	34	0	108	0	0	0	0	0	267	0	115	0	0	27	27	0	112	0	0	0	1	0	189	0	79	0	0	
China, Yunnan	Prov. Lab/CCDC	28	0	-	-	-	-	-	-	-	-	-	57	0	0	14	0	-	-	-	-	-	-	-	-	-	15	0	0	
Malaysia	IMR	24	0	-	-	-	-	-	-	-	-	-	22	0	0	0	-	-	-	-	-	-	-	-	-	-	-	-	-	
Philippines	RITM	40	8	0	1	0	0	0	0	0	7	0	21	0	0	87	8	0	2	0	0	0	0	0	2	0	24	4	0	
Papua New Guinea	RITM	-	-	-	-	-	-	-	-	-	-	-	-	-	-	27	23	0	16	7	0	0	0	0	21	0	9	0	0	
Total		395	198	0	214	0	0	0	1	0	658	0	1205	0	0	371	187	0	199	7	0	0	1	0	503	2	1206	4	0	

1. Based on year of collection of sample, if available. Otherwise, based on year of receipt at reference laboratory.

2. CCDC (Chinese Center for Disease Control and Prevention, China); IMR (Institute of Medical Research, Malaysia); RITM (Research Institute for Tropical Medicine, Philippines); VIDRL (Victorian Infectious Diseases Reference Laboratory, Australia)

Table 4. Vaccine-derived poliovirus¹ identified from laboratory testing², 2000–2018

Country/area	2000–2009 ³	2010	2011	2012	2013	2014	2015	2016	2017	2018
Australia									aVDPV2 (1 env)	
Cambodia	2006 - 1 Total - 2									
China	2009 - 1 Total - 27	aVDPV2 (3 AFP + 1 contact + 1 non-AFP) aVDPV3 (1 AFP + 1 non-AFP)	aVDPV1 (1 AFP) aVDPV2 (2 AFP + 1 contact) cVDPV2 (2 AFP) iVDPV2 (1 AFP + 1 non-AFP) iMDPV3 (1 AFP)	aVDPV1 (1 AFP) aVDPV2 (2 AFP) cVDPV2 (2 AFP + 1 contact) iVDPV2 + iMDPV3 (1 AFP)	aVDPV2 (1 non-AFP) iVDPV2 + iMDPV3 (1 AFP)	aVDPV1 (1 non-AFP) aVDPV2 (2 AFP) iVDPV3 (1 AFP)	aVDPV1 (1 AFP) aVDPV2 (1 AFP) iVDPV2 (1 AFP) aVDPV2 (1 env)	aVDPV3 (1 AFP)	aVDPV3 (1 AFP) iVDPV3 (1 AFP) ⁴	aVDPV2 (1 env) iVDPV3 (1 AFP + 1 non-AFP) aVDPV3 (2 env)
China, Hong Kong SAR	2005 - 3									
Japan	2005 - 1 Total - 2									
Lao People's Democratic Republic	2004 - 3						cVDPV1 (8 AFP + 21 contacts)	cVDPV1 (3 AFP + 4 contacts)		
Mongolia	2003 - 1									
Papua New Guinea										cVDPV1 (26 AFP + 8 contacts + 7 env)
Philippines	2001 - 3					aVDPV2 (1 AFP)				
Viet Nam				aVDPV2 (2 AFP)						

1. Prefix letter refers to the VDPV category: "cVDPV" = circulating VDPV, "iVDPV" = immunodeficiency-associated VDPV, "aVDPV" = ambiguous VDPV, "vVDPV" = pending. Suffix number refers to the poliovirus serotype (types 1, 2 or 3).

2. Source of specimens could be AFP cases, contacts, non-AFP cases or environmental

3. Refers to year of last VDPV case, and aggregate total of VDPV cases for 2000-2009

4. Continuous excretion for 4 months; potential immunodeficient person.